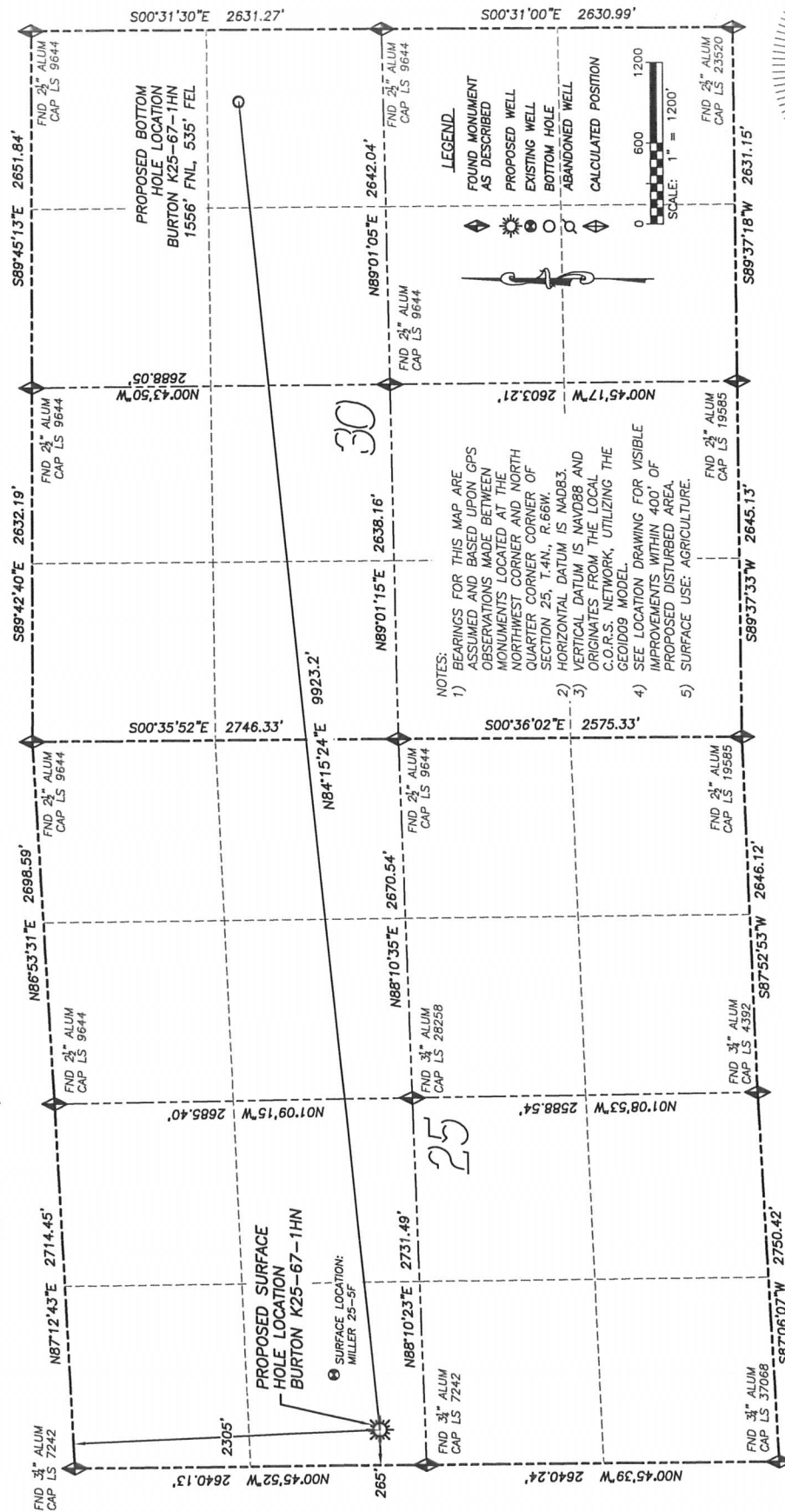


DALEY LAND SURVEYING, INC. PARKER, CO. 80134 303 953 9841  
**WELL LOCATION CERTIFICATE - BURTON K25-67-1HN**  
 SECTION 25, TOWNSHIP 4 NORTH, RANGE 66 WEST OF THE 6TH PRINCIPAL MERIDIAN



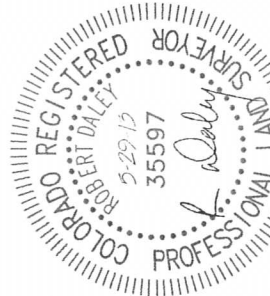
IN ACCORDANCE WITH A REQUEST FROM CJ PIETRI OF NOBLE ENERGY, INC., DALEY LAND SURVEYING, INC. HAS DETERMINED THE SURFACE LOCATION OF THE BURTON K25-67-1HN WELL TO BE 2305' FNL, 265' FNL, AS MEASURED AT NINETY (90) DEGREES FROM THE SECTION LINES OF SECTION 25, TOWNSHIP 4 NORTH, RANGE 66 WEST OF THE 6TH PRINCIPAL MERIDIAN, WELD COUNTY, COLORADO. THE BOTTOM HOLE LOCATION, PROVIDED BY THE CLIENT, IS TO BE 1556' FNL, 535' FEL OF SECTION 30, T.4N., R.65W.

I HEREBY CERTIFY THAT THIS WELL LOCATION CERTIFICATE WAS PREPARED BY ME OR UNDER MY DIRECT SUPERVISION THAT THE WORK WAS COMPLETED ON 5/23/2013 FOR AND ON BEHALF OF NOBLE ENERGY, INC., AND THAT THIS MAP DOES NOT REPRESENT A BOUNDARY SURVEY, IT IS NOT A LAND SURVEY PLAT OR AN IMPROVEMENT SURVEY PLAT AND IT IS NOT TO BE REPLIED UPON FOR THE ESTABLISHMENT OF FENCE, BUILDING OR OTHER FUTURE IMPROVEMENT LINES.

**BOTTOM HOLE:**  
 LATITUDE: N40.28637°  
 LONGITUDE: W104.69852°  
 FOOTAGE: 1556' FNL, 535' FEL  
 OF SEC. 30 T4N R65W

**NEAREST EXISTING WELL:**  
 MILLER 25-5F SURFACE HOLE  
 LATITUDE: N40.28481°  
 LONGITUDE: W104.73246°  
 ELEVATION: 4774' 533' NORTHEAST

**NAD 83 LATITUDE AND LONGITUDE**  
**BURTON K25-67-1HN**  
**SURFACE HOLE:**  
 LATITUDE: N40.28389°  
 LONGITUDE: W104.73394°  
 ELEVATION: 4775'  
 FOOTAGE: 2305' FNL, 265' FNL  
 PDOP: 1.8  
 QTR/QTR: SW4/NW4 SEC 25  
 PROP LINE: 265'± WEST



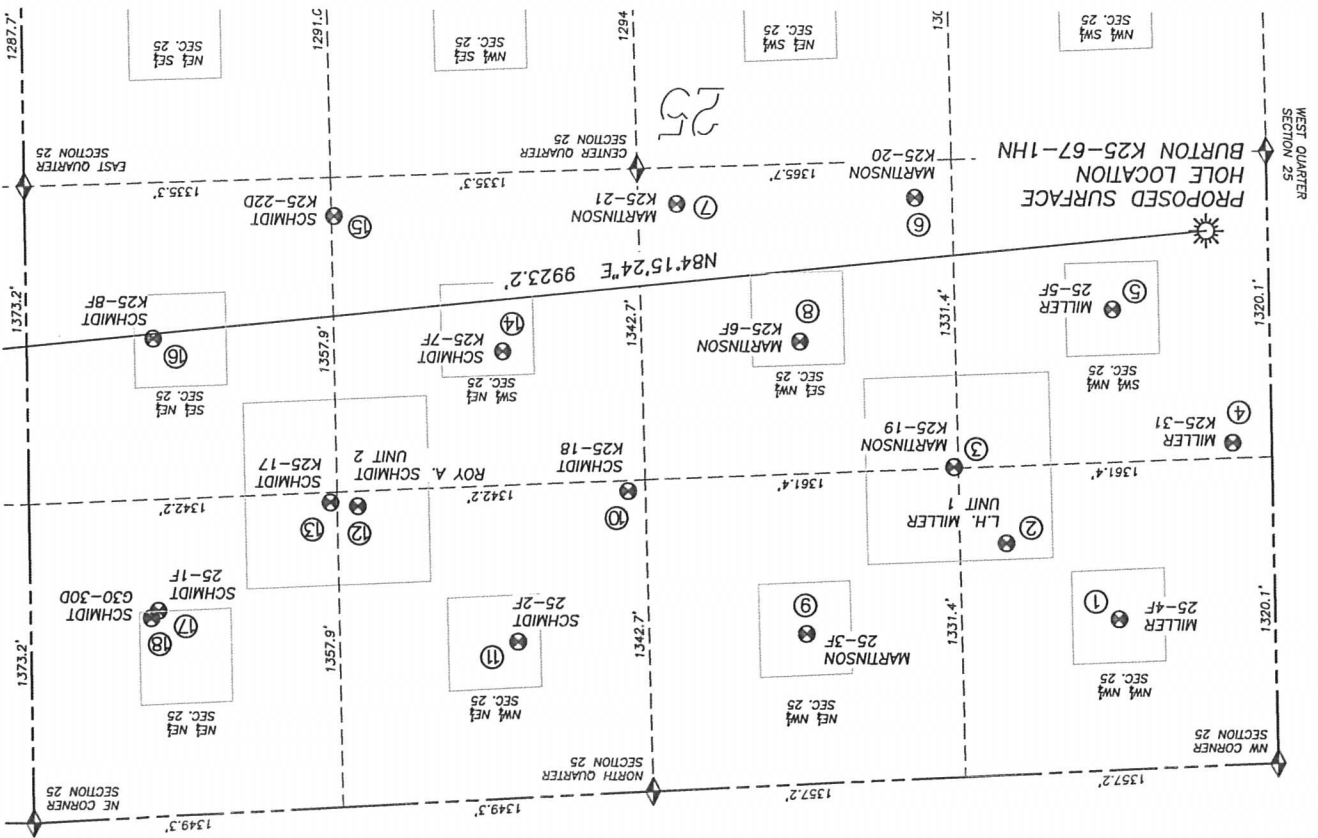
FOR AND ON BEHALF OF  
 DALEY LAND SURVEYING, INC.  
 Robert Daley, PLS 35597

NOTICE: According to Colorado law you MUST commence any legal action based upon any defect in this W.L.C. within three years after you first discover such defect. In no event may any action based upon any such defect in this W.L.C. be commenced more than ten years from the date of the certification shown herein.

DALEY LAND SURVEYING, INC. PARKER, CO. 80134 303 953 9841

SITE SKETCH BURTON K25-67-1HN

SECTION 25, TOWNSHIP 4 NORTH, RANGE 66 WEST OF THE 6TH PRINCIPAL MERIDIAN



Well Name	Qtr - Qtr	Footage	Latitude	Longitude	Elevation	PDOP
1 MILLER 25-4F	NW NW 25	649' FNL	40.28848	-104.73249	4760	1.4
2 LH MILLER UNIT 1	NW NW 25	998' FNL	40.28757	-104.73076	4759	1.4
3 MARTINSON K25-19	SE NW 25	1336' FNL	40.28667	-104.72996	4762	1.4
4 MILLER K25-31	SW NW 25	1387' FNL	40.28640	-104.73429	4762	1.4
5 MILLER 25-5F	SW NW 25	1984' FNL	40.28481	-104.73246	4774	1.4
6 MARTINSON K25-20	SE NW 25	2504' FNL	40.28348	-104.72942	4780	1.3
7 MARTINSON K25-21	SE NW 25	2524' FNL	40.28354	-104.72570	4778	1.3
8 MARTINSON 25-6F	SE NW 25	1907' FNL	40.28517	-104.72760	4774	1.3
9 MARTINSON 25-3F	NE NW 25	647' FNL	40.28863	-104.72764	4762	1.5
10 SCHMIDT K25-18	NW NE 25	1297' FNL	40.28693	-104.72488	4768	1.2
11 SCHMIDT 25-2F	NW NE 25	673' FNL	40.28871	-104.72314	4761	1.4
12 ROY A SCHMIDT UNIT 2	NW NE 25	1292' FNL	40.28709	-104.72067	4768	1.2
13 SCHMIDT K25-17	NE NE 25	1315' FNL	40.28705	-104.72024	4769	1.2
14 SCHMIDT 25-7F	SE NE 25	1926' FNL	40.28527	-104.72296	4768	1.4
15 SCHMIDT K25-22D	SE NE 25	2547' FNL	40.28366	-104.72036	4780	1.3
16 SCHMIDT 25-8F	SE NE 25	2059' FNL	40.28510	-104.71751	4781	1.2
17 SCHMIDT 25-1F	NE NE 25	886' FNL	40.28832	-104.71754	4771	1.2
18 SCHMIDT G30-30D	NE NE 25	856' FNL	40.28840	-104.71742	4771	1.3

LEGEND

FOUND MONUMENT AS DESCRIBED

PROPOSED WELL

EXISTING WELL

BOTTOM HOLE

ABANDONED WELL

CALCULATED POSITION

NOTES:

1. HORIZONTAL DATUM IS NAD83 AND ORIGINALS FROM THE LOCAL C.O.R.S. NETWORK UTILIZING THE GEOID09 MODEL.

2. VERTICAL DATUM IS NAVD83

SCALE: 1" = 800'

800'

0

S

N

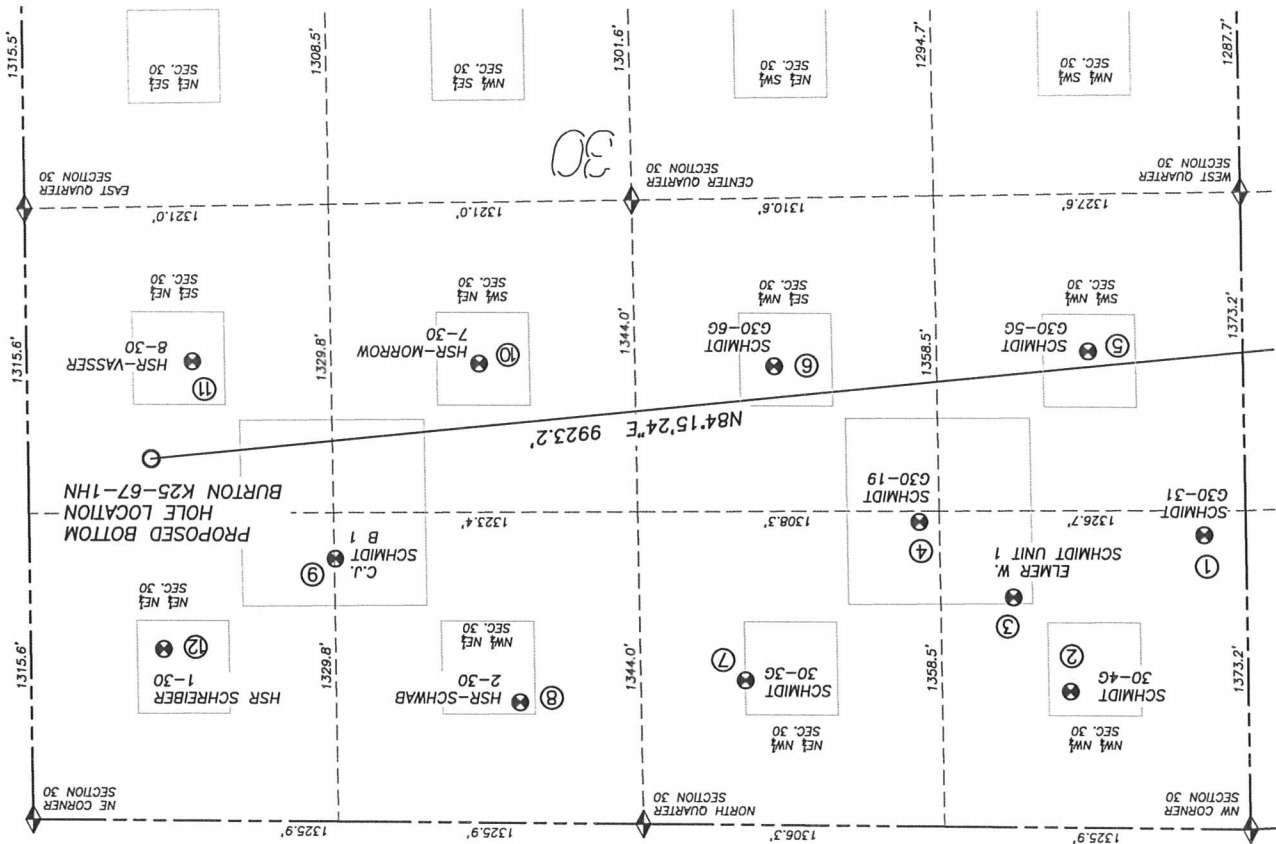
E

W

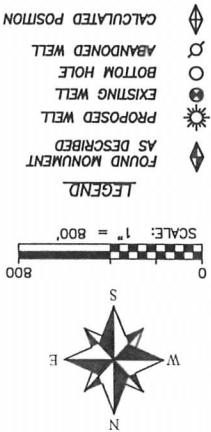
DALEY LAND SURVEYING, INC. PARKER, CO. 80134 303 953 9841

SITE SKETCH BURTON K25-67-1HN

SECTION 25, TOWNSHIP 4 NORTH, RANGE 66 WEST OF THE 6TH PRINCIPAL MERIDIAN



Well Name	Qtr - Qtr	Footage		Latitude	Longitude	Elevation	PDOP
1	SCHMIDT G30-31	NW NW 30	1265' FNL	180' FWL	40.28734	-104.71489	4781
2	SCHMIDT 30-4G	NW NW 30	586' FNL	767' FWL	40.28918	-104.71279	4784
3	ELMER W SCHMIDT UNIT 1	NW NW 30	989' FNL	767' FWL	40.28807	-104.71192	4785
4	SCHMIDT G30-19	NE NW 30	1311' FNL	1412' FWL	40.28717	-104.71048	4789
5	SCHMIDT 30-5G	SW NW 30	2052' FNL	667' FWL	40.28516	-104.71314	4790
6	SCHMIDT 30-6G	SE NW 30	1976' FNL	2030' FWL	40.28532	-104.70826	4801
7	SCHMIDT 30-3G	NE NW 30	622' FNL	2178' FWL	40.28903	-104.70773	4786
8	HSR SCHWAB 2-30	NW NE 30	520' FNL	2124' FEL	40.28928	-104.70422	4791
9	CJ SCHMIDT B 1	NW NE 30	1131' FNL	1329' FEL	40.28757	-104.70137	4806
10	HSR MORROW 7-30	SW NE 30	1977' FNL	1968' FEL	40.28527	-104.70366	4808
11	HSR VASSER 8-30	SE SE 30	1977' FNL	722' FEL	40.28522	-104.69919	4819
12	HSR SCHREIBER 1-30	NE NE 30	737' FNL	579' FEL	40.28862	-104.69868	4814



NOTES:  
1. HORIZONTAL DATUM IS NAD83  
2. VERTICAL DATUM IS NAVD88  
AND ORIGINATES FROM THE  
LOCAL C.O.R.S. NETWORK,  
UTILIZING THE GEOID09 MODEL.