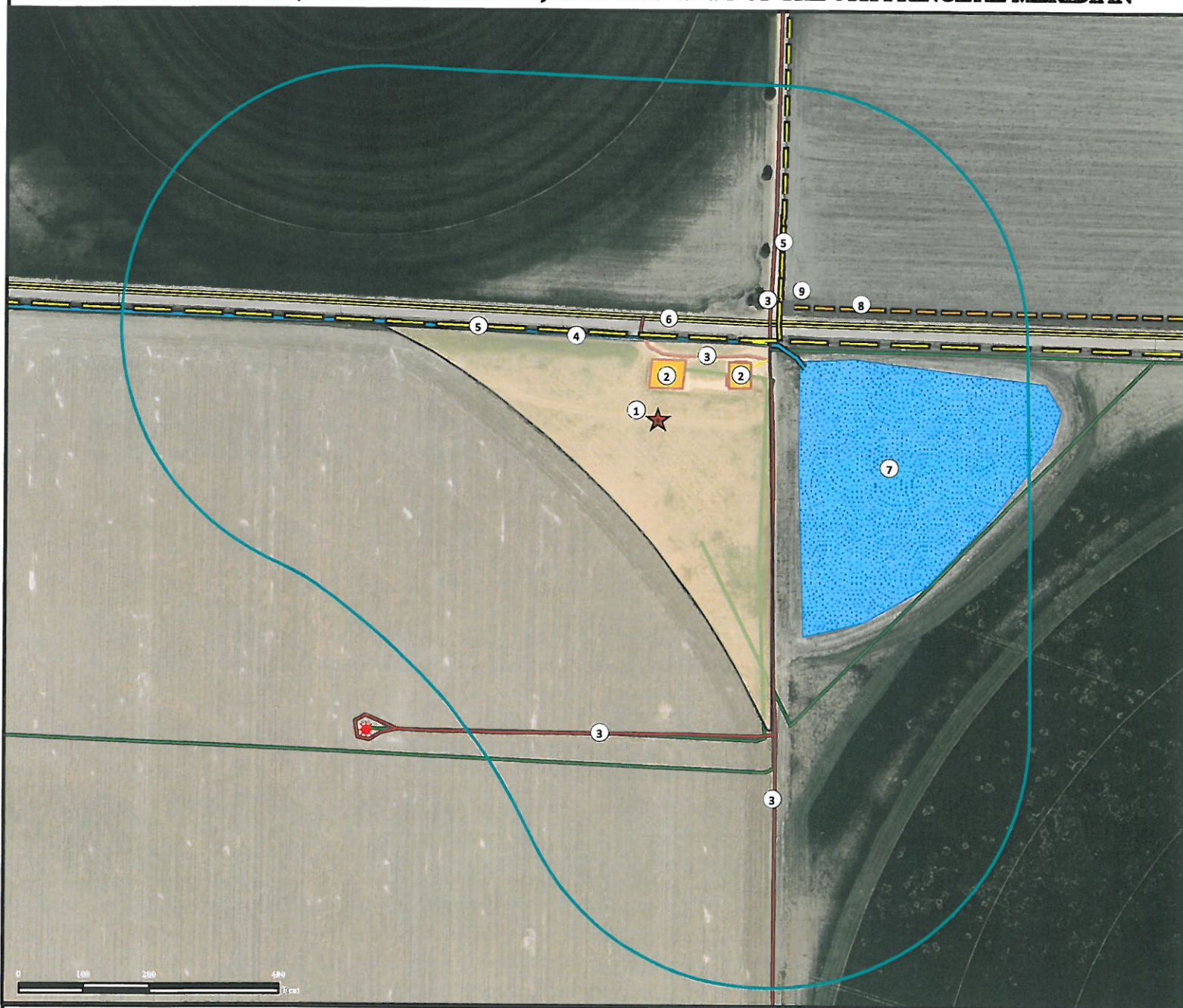


Location Drawing

NEW DAY 4C-7HZ FACILITY

NE¼ NW¼ SECTION 7, TOWNSHIP 3 NORTH, RANGE 67 WEST OF THE 6TH PRINCIPAL MERIDIAN



1. Proposed NEW DAY 4C-7HZ Facility.
2. Existing Facilities are ±48' N and ±120' NE.
3. Private Roads are ±100' N and ±177' E, ±228' NE, and ±430' S.
4. Ditch is ±121' N.

5. Powerlines are ±129' N and ±224' NE.
6. County Road 36 is ±156' N.
7. Pond is ±219' E.
8. Fence is ±265' NE.
9. Gate is ±265' NE.

Legend	Existing Well	Proposed Facility	Public Road	Fence
400' Radius	Private Road	Pipeline	Gate	
Existing Facility	Powerline	Ditch		

Reference Location

** All Measurements are Made from Reference Point **

Lat: 40.247524° Long: -104.933406° (NAD83)
Elevation: 4887 Feet

FNL: 153' FWL: 2323'



Use our resources to find yours!
www.petro-fs.com
(303) 928-7128

Field Date: 05/06/2013
Drafting Date: 06/03/2013
Drafter: GWB
Revision:

Surface Use: Irrigated Crop

Data Sources:
- Aerial courtesy of Anadarko Petroleum Corporation (2010)

Prepared for:
KERR-MCGEE OIL & GAS ONSHORE LP