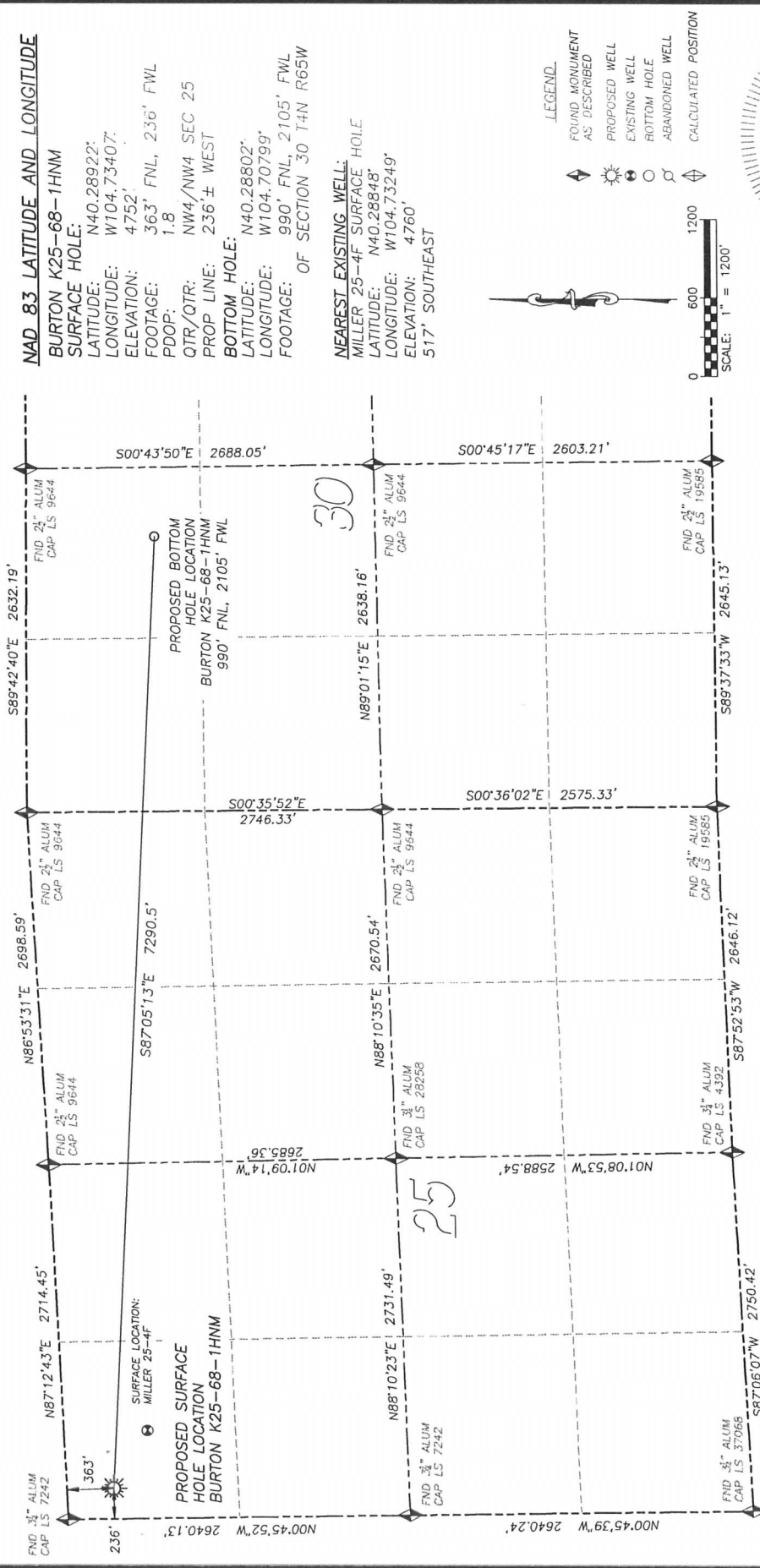


DALEY LAND SURVEYING, INC. PARKER, CO. 80134 303 953 9841
WELL LOCATION CERTIFICATE - BURTON K25-68-1HNM
 SECTION 25, TOWNSHIP 4 NORTH, RANGE 66 WEST OF THE 6TH PRINCIPAL MERIDIAN



NOTES:
 1) BEARINGS FOR THIS MAP ARE ASSUMED AND BASED UPON GPS OBSERVATIONS MADE BETWEEN MONUMENTS LOCATED AT THE NORTHWEST CORNER AND NORTH QUARTER CORNER CORRIER OF SECTION 25, T.4N., R.66W.
 2) HORIZONTAL DATUM IS NAD83.
 3) VERTICAL DATUM IS NAVD88 AND ORIGINATES FROM THE LOCAL C.O.R.S. NETWORK, UTILIZING THE GEOID09 MODEL.
 4) SEE LOCATION DRAWING FOR VISIBLE IMPROVEMENTS WITHIN 400' OF PROPOSED DISTURBED AREA.
 5) SURFACE USE: AGRICULTURE.

IN ACCORDANCE WITH A REQUEST FROM BRIAN DeROSE OF NOBLE ENERGY INC., DALEY LAND SURVEYING, INC. HAS DETERMINED THE SURFACE LOCATION OF THE BURTON K25-68-1HNM WELL TO BE 363' FNL, 236' FWL, AS MEASURED AT NINETY (90) DEGREES FROM THE SECTION LINES OF SECTION 25, TOWNSHIP 4 NORTH, RANGE 66 WEST OF THE 6TH PRINCIPAL MERIDIAN, WELD COUNTY, COLORADO. THE BOTTOM HOLE LOCATION, PROVIDED BY THE CLIENT, IS TO BE 990' FNL, 2105' FWL OF SECTION 30, T.4N., R.65W.
 I HEREBY CERTIFY THAT THIS WELL LOCATION CERTIFICATE WAS PREPARED BY ME OR UNDER MY DIRECT SUPERVISION, THAT THE WORK WAS COMPLETED ON 3/27/2012 FOR AND ON BEHALF OF NOBLE ENERGY, INC., AND THAT THIS MAP DOES NOT REPRESENT A BOUNDARY SURVEY, IT IS NOT A LAND SURVEY PLAT OR AN IMPROVEMENT SURVEY PLAT AND IT IS NOT TO BE RELIED UPON FOR THE ESTABLISHMENT OF FENCE, BUILDING OR OTHER FUTURE IMPROVEMENT LINES.

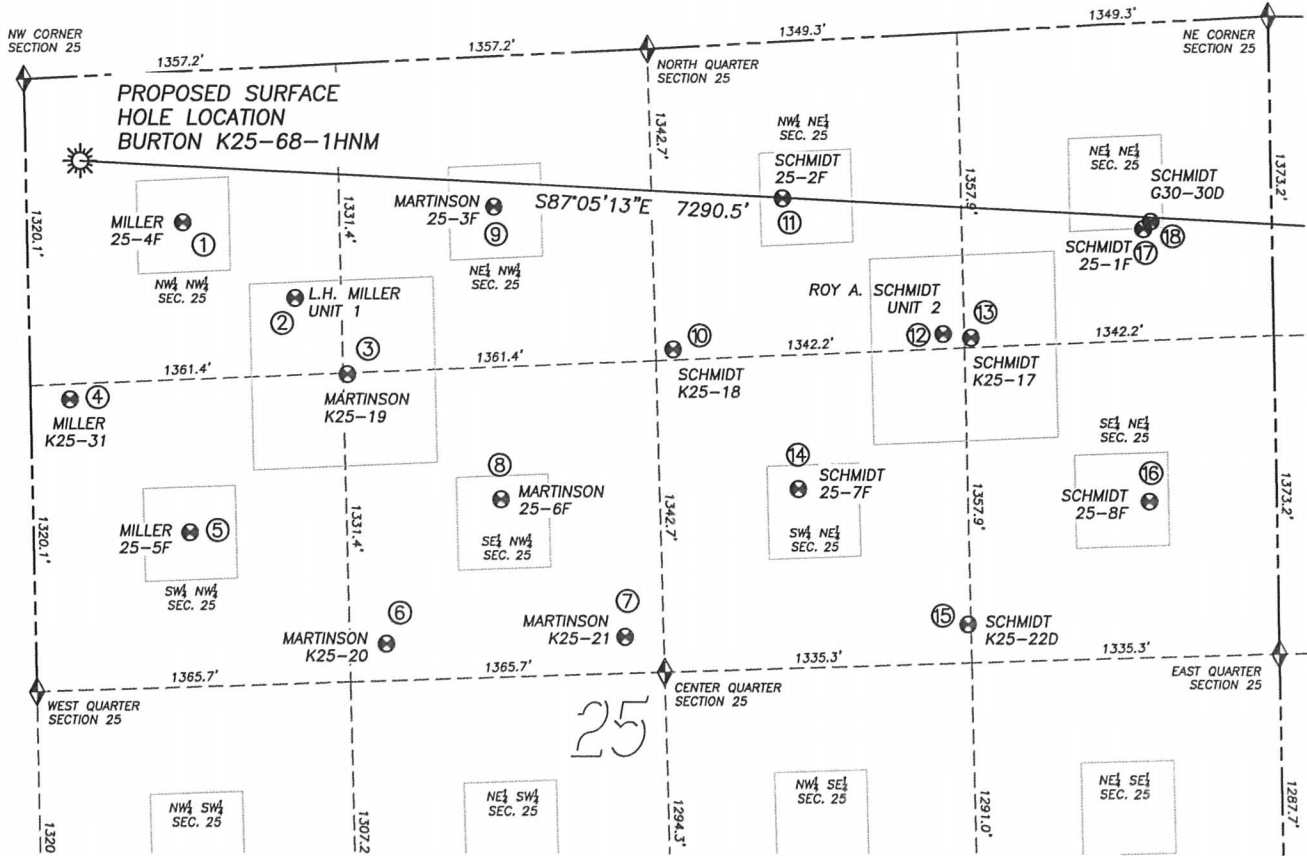


FOR AND ON BEHALF OF
 DALEY LAND SURVEYING, INC.,
 Robert Daley, PLS 35597

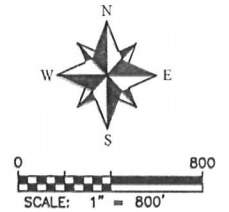
NOTICE: According to Colorado law you MUST commence any legal action based upon any defect in this W.L.C. within three years after you first discover such defect. In no event may any action based upon any such defect in this W.L.C. be commenced more than ten years from the date of the certification shown herein.

SITE SKETCH BURTON K25-68-1HNM

SECTION 25, TOWNSHIP 4 NORTH, RANGE 66 WEST OF THE 6TH PRINCIPAL MERIDIAN



Well Name	Qtr - Qtr	Footage	Latitude	Longitude	Elevation	PDOP
1 MILLER 25-4F	NW NW 25	649' FNL 676' FWL	40.28848	-104.73249	4760	1.4
2 LH MILLER UNIT 1	NW NW 25	998' FNL 1159' FWL	40.28757	-104.73076	4759	1.4
3 MARTINSON K25-19	SE NW 25	1336' FNL 1379' FWL	40.28667	-104.72996	4762	1.4
4 MILLER K25-31	SW NW 25	1387' FNL 170' FWL	40.28640	-104.73429	4762	1.4
5 MILLER 25-5F	SW NW 25	1984' FNL 679' FWL	40.28481	-104.73246	4774	1.4
6 MARTINSON K25-20	SE NW 25	2504' FNL 1525' FWL	40.28348	-104.72942	4780	1.3
7 MARTINSON K25-21	SE NW 25	2524' FNL 2562' FWL	40.28354	-104.72570	4778	1.3
8 MARTINSON 25-6F	SE NW 25	1907' FNL 2036' FWL	40.28517	-104.72760	4774	1.3
9 MARTINSON 25-3F	NE NW 25	647' FNL 2031' FWL	40.28863	-104.72764	4762	1.5
10 SCHMIDT K25-18	NW NE 25	1297' FNL 2608' FEL	40.28693	-104.72488	4768	1.2
11 SCHMIDT 25-2F	NW NE 25	673' FNL 2121' FEL	40.28871	-104.72314	4761	1.4
12 ROY A SCHMIDT UNIT 2	NW NE 25	1292' FNL 1432' FEL	40.28709	-104.72067	4768	1.2
13 SCHMIDT K25-17	NE NE 25	1315' FNL 1313' FEL	40.28705	-104.72024	4769	1.2
14 SCHMIDT 25-7F	SE NE 25	1926' FNL 2073' FEL	40.28527	-104.72296	4768	1.4
15 SCHMIDT K25-22D	SE NE 25	2547' FNL 1348' FEL	40.28366	-104.72036	4780	1.3
16 SCHMIDT 25-8F	SE NE 25	2059' FNL 552' FEL	40.28510	-104.71751	4781	1.2
17 SCHMIDT 25-1F	NE NE 25	886' FNL 557' FEL	40.28832	-104.71754	4771	1.2
18 SCHMIDT G30-30D	NE NE 25	856' FNL 526' FEL	40.28840	-104.71742	4771	1.3



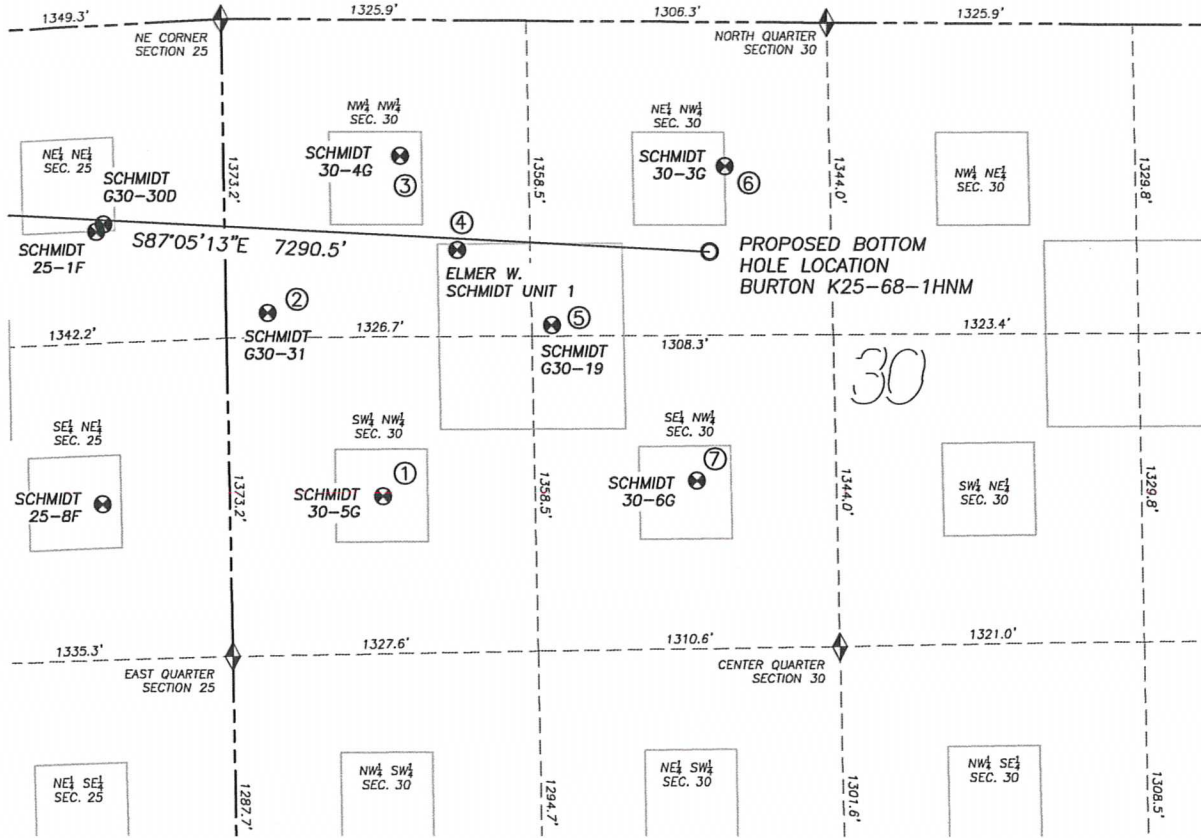
- LEGEND**
- ◆ FOUND MONUMENT AS DESCRIBED
 - ☀ PROPOSED WELL
 - EXISTING WELL
 - BOTTOM HOLE
 - ⊙ ABANDONED WELL
 - ◆ CALCULATED POSITION

NOTES:

1. THIS DOES NOT REPRESENT A BOUNDARY SURVEY
2. HORIZONTAL DATUM IS NAD83
3. VERTICAL DATUM IS NAVD88 AND ORIGINATES FROM THE LOCAL C.O.R.S. NETWORK, UTILIZING THE GEOD09 MODEL.

SITE SKETCH BURTON K25-68-1HNM

SECTION 25, TOWNSHIP 4 NORTH, RANGE 66 WEST OF THE 6TH PRINCIPAL MERIDIAN



	Well Name	Qtr - Qtr	Footage		Latitude	Longitude	Elevation	PDOP
1	SCHMIDT 30-5G	SW NW 30	2052' FNL	667' FWL	40.28516	-104.71314	4790	1.2
2	SCHMIDT G30-31	NW NW 30	1265' FNL	180' FWL	40.28734	-104.71489	4781	1.1
3	SCHMIDT 30-4G	NW NW 30	586' FNL	767' FWL	40.28918	-104.71279	4784	1.5
4	ELMER W SCHMIDT UNIT 1	NW NW 30	989' FNL	767' FWL	40.28807	-104.71192	4785	1.5
5	SCHMIDT G30-19	NE NW 30	1311' FNL	1412' FWL	40.28717	-104.71048	4789	1.5
6	SCHMIDT 30-3G	NE NW 30	622' FNL	2178' FWL	40.28903	-104.70773	4786	1.5
7	SCHMIDT 30-6G	SE NW 30	1976' FNL	2030' FWL	40.28532	-104.70826	4801	1.2

NOTES:
 1. THIS DOES NOT REPRESENT A BOUNDARY SURVEY
 2. HORIZONTAL DATUM IS NAD83
 3. VERTICAL DATUM IS NAVD88 AND ORIGINATES FROM THE LOCAL C.O.R.S. NETWORK, UTILIZING THE GEOID09 MODEL.

- LEGEND**
- FOUND MONUMENT AS DESCRIBED
 - PROPOSED WELL
 - EXISTING WELL
 - BOTTOM HOLE
 - ABANDONED WELL
 - CALCULATED POSITION

