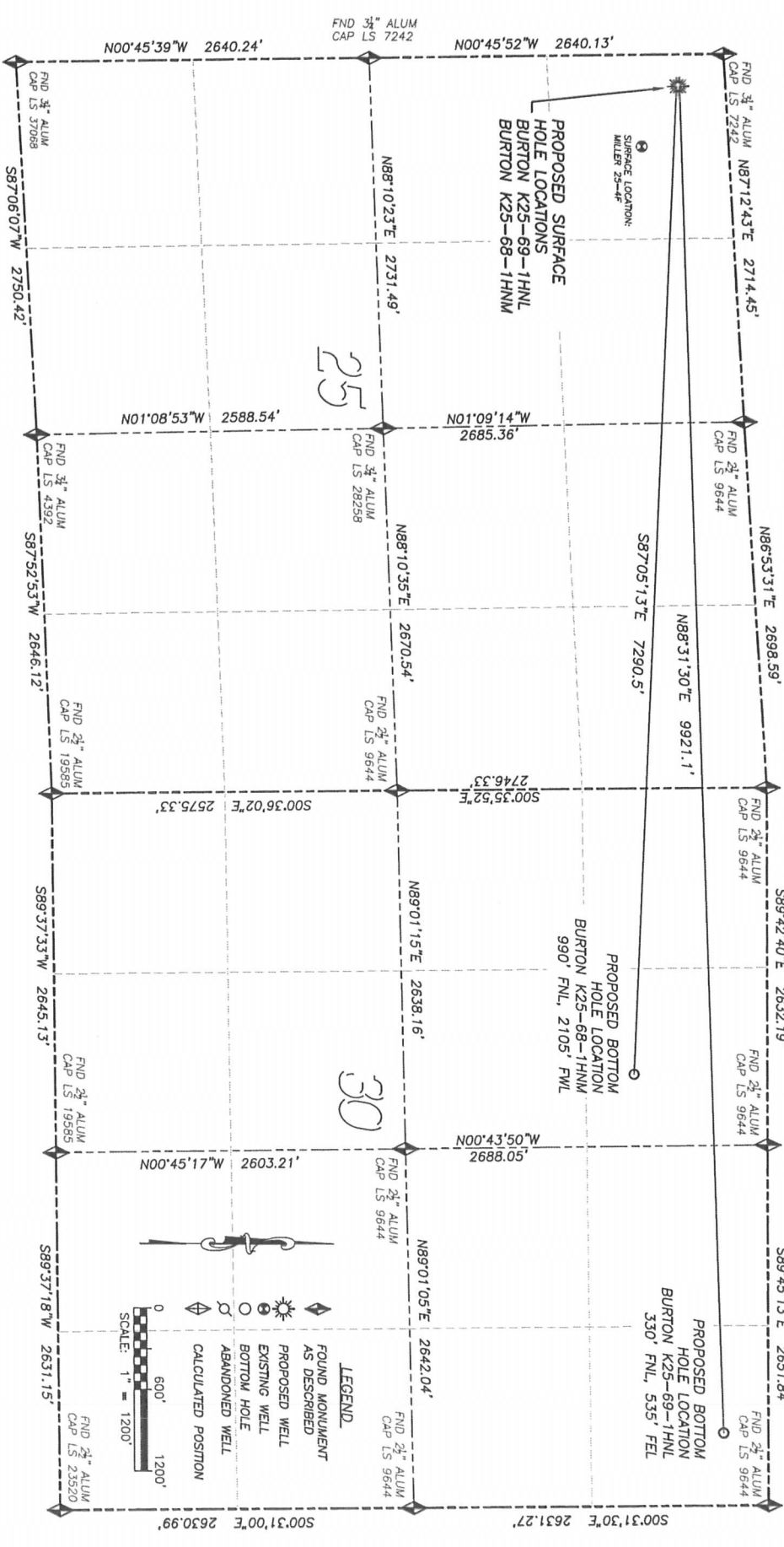


DALEY LAND SURVEYING, INC. PARKER, CO. 80134 303 953 9841

MULTI-Well PAD DIRECTIONAL LAYOUT

BURTON K25-69-1HNL & BURTON K25-68-1HNM

SECTION 25, TOWNSHIP 4 NORTH, RANGE 66 WEST OF THE 6TH PRINCIPAL MERIDIAN



Well Name	Qtr - Qtr	Footage	Latitude	Longitude	Elevation
SHL BURTON K25-69-1HNL	NW NW 25	341' FNL	40.28928	-104.73407	4752
	NE NE 30	330' FNL	40.28974	-104.69853	
SHL BURTON K25-68-1HNM	NW NW 25	363' FNL	40.28922	-104.73407	4752
	NE NW 30	990' FNL	40.28802	-104.70799	

NOTES:
 1) BEARINGS FOR THIS MAP ARE ASSUMED AND BASED UPON GPS OBSERVATIONS MADE BETWEEN MONUMENTS LOCATED AT THE NORTHWEST CORNER AND NORTH QUARTER CORNER OF SECTION 25, T.4N., R.66W.
 2) HORIZONTAL DATUM IS NAD83.
 3) VERTICAL DATUM IS NAVD88 AND ORIGINATES FROM THE LOCAL C.O.R.S. NETWORK, UTILIZING THE GEOID09 MODEL.

DALEY LAND SURVEYING, INC. PARKER, CO. 80134 303 953 9841

MULTI-WELL PAD LOCATION DRAWING

BURTON K25-69-1HNL & BURTON K25-68-1HNM

SECTION 25, TOWNSHIP 4 NORTH, RANGE 66 WEST OF THE 6TH PRINCIPAL MERIDIAN

