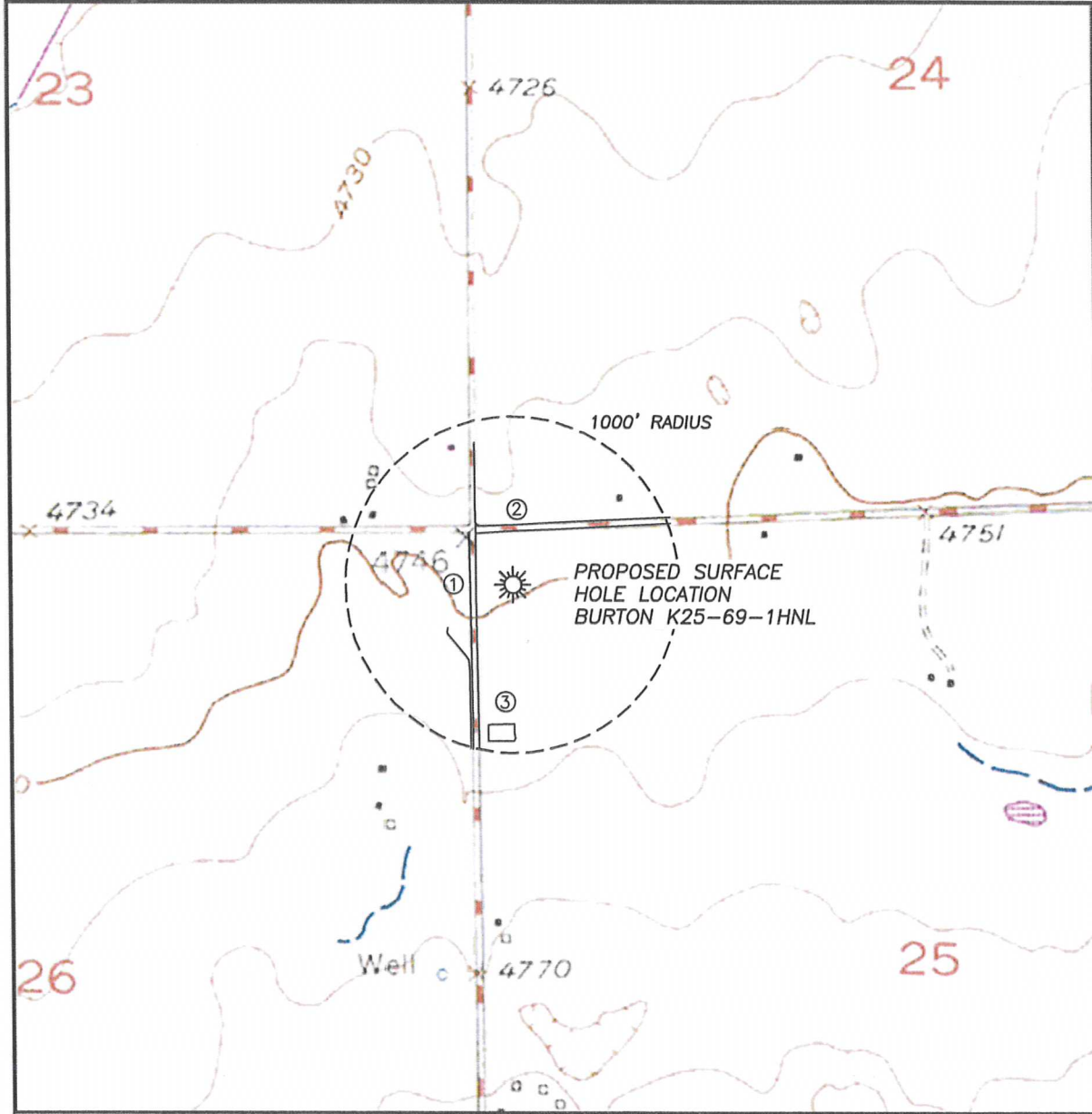


# HYDROLOGY MAP BURTON K25-69-1HNL

SECTION 25, TOWNSHIP 4 NORTH, RANGE 66 WEST OF THE 6TH PRINCIPAL MERIDIAN



SURFACE WATER

- |                |         |
|----------------|---------|
| 1. IRR. DITCH: | 220'± W |
|                | 253'± W |
| 2. IRR. DITCH: | 318'± N |
|                | 357'± N |
| 3. IRR. POND:  | 829'± S |

