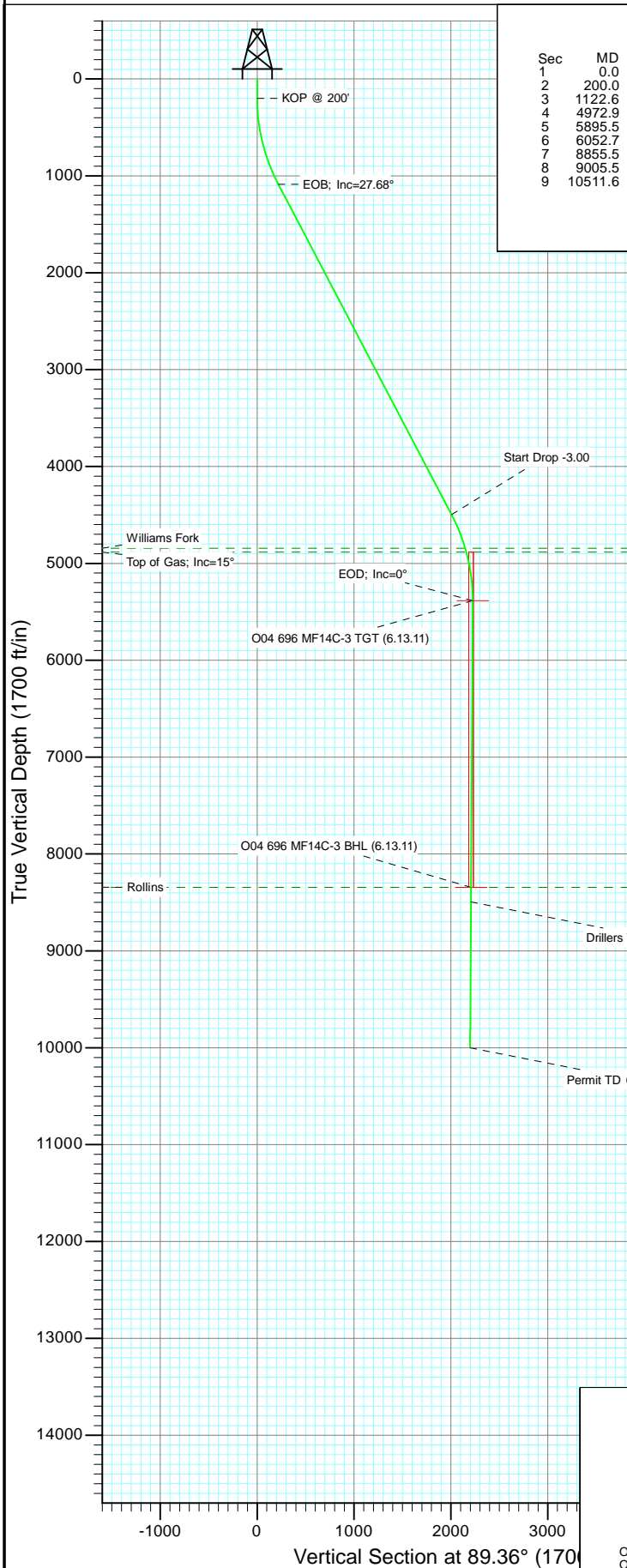
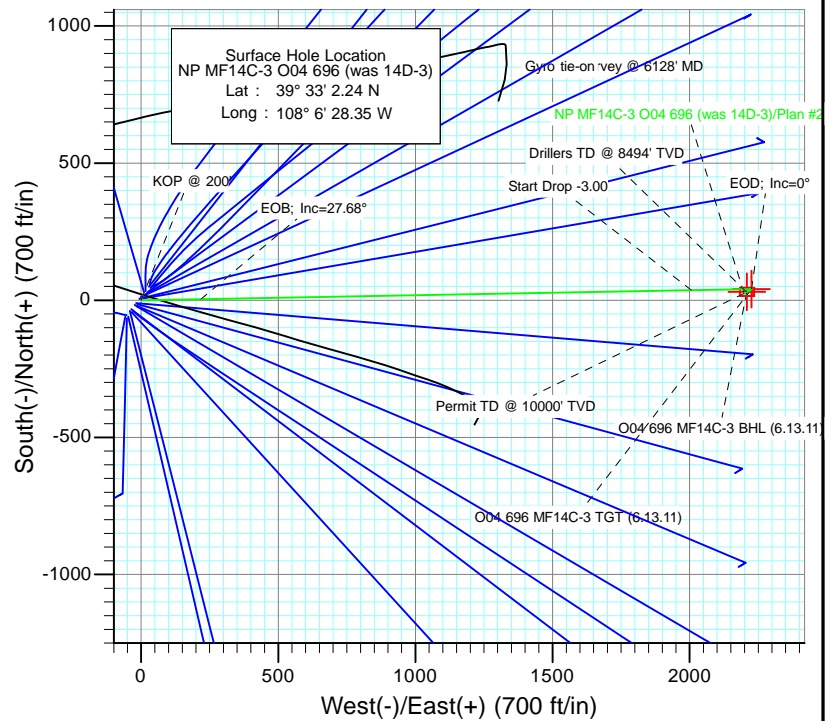




Project: North Piceance
Site: O04 696 (3rd)
Well: NP MF14C-3 O04 696 (was 14D-3)
Wellbore: DD
Design: Plan #2



SECTION DETAILS										
Sec	MD	Inc	Azi	TVD	+N/-S	+E/-W	Dleg	TFace	Vsect	Target
1	0.0	0.00	0.00	0.0	0.0	0.0	0.00	0.00	0.0	
2	200.0	0.00	0.00	200.0	0.0	0.0	0.00	0.00	0.0	
3	1122.6	27.68	88.96	1087.1	4.0	218.5	3.00	88.96	218.5	O04 696 MF14C-3 TGT (6.13.11)
4	4972.9	27.68	88.96	4496.9	36.5	2006.6	0.00	0.00	2006.9	
5	5895.5	0.00	0.00	5384.0	40.5	2225.1	3.00	180.00	2225.4	O04 696 MF14C-3 BHL (6.13.11)
6	6052.7	0.39	239.49	5541.2	40.2	2224.6	0.25	239.49	2224.9	
7	8855.5	0.39	239.49	8344.0	30.5	2208.1	0.00	0.00	2208.3	
8	9005.5	0.39	239.49	8494.0	29.9	2207.2	0.00	0.00	2207.4	
9	10511.6	0.39	239.49	10000.0	24.7	2198.3	0.00	0.00	2198.4	



Azimuths to True North
Magnetic North: 10.54°

Magnetic Field
Strength: 52365.1nT
Dip Angle: 65.79°
Date: 6/17/2010
Model: IGRF2010

FORMATION TOP DETAILS

TVDPath	MDPath	Formation
4844.0	5348.0	Williams Fork
4884.0	5389.6	Top of Gas; Inc=15°
8344.0	8855.5	Rollins

Plan #2 NP MF14C-3 O04 696 (was 14D-3) 95xxx; LR WELL @ 6044.0ft (Original Well Elev) North American Datum 1983 Well NP MF14C-3 O04 696 (was 14D-3), True North							
Type TD	Target No Target (Freehand)	Azimuth 89.36	Origin Slot	Type	N/S 0.0	E/W 0.0	From TVD 0.0
Name	TVD	+N/-S	+E/-W	Latitude	Longitude		
O04 696 MF14C-3 TGT (6.13.11)	5384.0	40.5	2225.1	39° 33' 2.64 N	108° 5' 59.94 W		
O04 696 MF14C-3 BHL (6.13.11)	8344.0	30.5	2208.1	39° 33' 2.54 N	108° 6' 0.16 W		

Planning Report

Database:	USA EDM 5000 US Multi Users DB	Local Co-ordinate Reference:	Well NP MF14C-3 O04 696 (was 14D-3)
Company:	EnCana Oil & Gas (USA) Inc	TVD Reference:	WELL @ 6044.0ft (Original Well Elev)
Project:	North Piceance	MD Reference:	WELL @ 6044.0ft (Original Well Elev)
Site:	O04 696 (3rd)	North Reference:	True
Well:	NP MF14C-3 O04 696 (was 14D-3)	Survey Calculation Method:	Minimum Curvature
Wellbore:	DD		
Design:	Plan #2		

Project	North Piceance		
Map System:	US State Plane 1983	System Datum:	Mean Sea Level
Geo Datum:	North American Datum 1983		
Map Zone:	Colorado Central Zone		

Site	O04 696 (3rd)			
Site Position:		Northing:	1,635,941.08 ft	Latitude: 39° 33' 1.64 N
From:	Lat/Long	Easting:	2,264,673.43 ft	Longitude: 108° 6' 29.09 W
Position Uncertainty:	0.0 ft	Slot Radius:	13.200 in	Grid Convergence: -1.64 °

Well	NP MF14C-3 O04 696 (was 14D-3)			
Well Position	+N/-S	0.0 ft	Northing:	1,636,000.08 ft
	+E/-W	0.0 ft	Easting:	2,264,733.11 ft
Position Uncertainty		0.0 ft	Wellhead Elevation:	ft
			Ground Level:	6,022.0 ft

Wellbore	DD				
Magnetics	Model Name	Sample Date	Declination (°)	Dip Angle (°)	Field Strength (nT)
	IGRF2010	6/17/2010	10.54	65.79	52,365

Design	Plan #2			
Audit Notes:				
Version:	Phase:	PLAN	Tie On Depth:	0.0
Vertical Section:	Depth From (TVD) (ft)	+N/-S (ft)	+E/-W (ft)	Direction (°)
	0.0	0.0	0.0	89.36

Plan Sections										
Measured Depth (ft)	Inclination (°)	Azimuth (°)	Vertical Depth (ft)	+N/-S (ft)	+E/-W (ft)	Dogleg Rate (°/100ft)	Build Rate (°/100ft)	Turn Rate (°/100ft)	TFO (°)	Target
0.0	0.00	0.00	0.0	0.0	0.0	0.00	0.00	0.00	0.00	
200.0	0.00	0.00	200.0	0.0	0.0	0.00	0.00	0.00	0.00	
1,122.6	27.68	88.96	1,087.1	4.0	218.5	3.00	3.00	0.00	88.96	
4,972.9	27.68	88.96	4,496.9	36.5	2,006.6	0.00	0.00	0.00	0.00	
5,895.5	0.00	0.00	5,384.0	40.5	2,225.1	3.00	-3.00	0.00	180.00	O04 696 MF14C-3 TC
6,052.7	0.39	239.49	5,541.2	40.2	2,224.6	0.25	0.25	-76.67	239.49	
8,855.5	0.39	239.49	8,344.0	30.5	2,208.1	0.00	0.00	0.00	0.00	O04 696 MF14C-3 B+
9,005.5	0.39	239.49	8,494.0	29.9	2,207.2	0.00	0.00	0.00	0.00	
10,511.6	0.39	239.49	10,000.0	24.7	2,198.3	0.00	0.00	0.00	0.00	

Planning Report

Database: USA EDM 5000 US Multi Users DB
Company: EnCana Oil & Gas (USA) Inc
Project: North Piceance
Site: O04 696 (3rd)
Well: NP MF14C-3 O04 696 (was 14D-3)
Wellbore: DD
Design: Plan #2

Local Co-ordinate Reference: Well NP MF14C-3 O04 696 (was 14D-3)
TVD Reference: WELL @ 6044.0ft (Original Well Elev)
MD Reference: WELL @ 6044.0ft (Original Well Elev)
North Reference: True
Survey Calculation Method: Minimum Curvature

Planned Survey

Measured Depth (ft)	Inclination (°)	Azimuth (°)	Vertical Depth (ft)	+N/-S (ft)	+E/-W (ft)	Vertical Section (ft)	Dogleg Rate (°/100ft)	Build Rate (°/100ft)	Comments / Formations
0.0	0.00	0.00	0.0	0.0	0.0	0.0	0.00	0.00	
30.0	0.00	0.00	30.0	0.0	0.0	0.0	0.00	0.00	
60.0	0.00	0.00	60.0	0.0	0.0	0.0	0.00	0.00	
90.0	0.00	0.00	90.0	0.0	0.0	0.0	0.00	0.00	
120.0	0.00	0.00	120.0	0.0	0.0	0.0	0.00	0.00	
150.0	0.00	0.00	150.0	0.0	0.0	0.0	0.00	0.00	
180.0	0.00	0.00	180.0	0.0	0.0	0.0	0.00	0.00	
200.0	0.00	0.00	200.0	0.0	0.0	0.0	0.00	0.00	KOP @ 200'
210.0	0.30	88.96	210.0	0.0	0.0	0.0	3.00	3.00	
240.0	1.20	88.96	240.0	0.0	0.4	0.4	3.00	3.00	
270.0	2.10	88.96	270.0	0.0	1.3	1.3	3.00	3.00	
300.0	3.00	88.96	300.0	0.0	2.6	2.6	3.00	3.00	
330.0	3.90	88.96	329.9	0.1	4.4	4.4	3.00	3.00	
360.0	4.80	88.96	359.8	0.1	6.7	6.7	3.00	3.00	
390.0	5.70	88.96	389.7	0.2	9.4	9.4	3.00	3.00	
420.0	6.60	88.96	419.5	0.2	12.7	12.7	3.00	3.00	
450.0	7.50	88.96	449.3	0.3	16.3	16.3	3.00	3.00	
480.0	8.40	88.96	479.0	0.4	20.5	20.5	3.00	3.00	
510.0	9.30	88.96	508.6	0.5	25.1	25.1	3.00	3.00	
540.0	10.20	88.96	538.2	0.5	30.2	30.2	3.00	3.00	
570.0	11.10	88.96	567.7	0.7	35.7	35.7	3.00	3.00	
600.0	12.00	88.96	597.1	0.8	41.7	41.7	3.00	3.00	
630.0	12.90	88.96	626.4	0.9	48.2	48.2	3.00	3.00	
660.0	13.80	88.96	655.6	1.0	55.1	55.1	3.00	3.00	
690.0	14.70	88.96	684.6	1.1	62.5	62.5	3.00	3.00	
720.0	15.60	88.96	713.6	1.3	70.3	70.4	3.00	3.00	
750.0	16.50	88.96	742.4	1.4	78.6	78.6	3.00	3.00	
780.0	17.40	88.96	771.1	1.6	87.4	87.4	3.00	3.00	
810.0	18.30	88.96	799.7	1.8	96.6	96.6	3.00	3.00	
840.0	19.20	88.96	828.1	1.9	106.2	106.2	3.00	3.00	
870.0	20.10	88.96	856.3	2.1	116.3	116.3	3.00	3.00	
900.0	21.00	88.96	884.4	2.3	126.8	126.8	3.00	3.00	
930.0	21.90	88.96	912.4	2.5	137.8	137.8	3.00	3.00	
960.0	22.80	88.96	940.1	2.7	149.2	149.2	3.00	3.00	
990.0	23.70	88.96	967.7	2.9	161.0	161.1	3.00	3.00	
1,020.0	24.60	88.96	995.0	3.2	173.3	173.3	3.00	3.00	
1,050.0	25.50	88.96	1,022.2	3.4	186.0	186.0	3.00	3.00	
1,080.0	26.40	88.96	1,049.2	3.6	199.1	199.2	3.00	3.00	
1,110.0	27.30	88.96	1,076.0	3.9	212.7	212.7	3.00	3.00	
1,122.6	27.68	88.96	1,087.1	4.0	218.5	218.5	3.00	3.00	EOB; Inc=27.68°
1,140.0	27.68	88.96	1,102.5	4.1	226.6	226.6	0.00	0.00	
1,170.0	27.68	88.96	1,129.1	4.4	240.5	240.6	0.00	0.00	
1,200.0	27.68	88.96	1,155.7	4.6	254.5	254.5	0.00	0.00	
1,230.0	27.68	88.96	1,182.2	4.9	268.4	268.4	0.00	0.00	
1,260.0	27.68	88.96	1,208.8	5.1	282.3	282.4	0.00	0.00	
1,290.0	27.68	88.96	1,235.4	5.4	296.2	296.3	0.00	0.00	
1,320.0	27.68	88.96	1,261.9	5.6	310.2	310.2	0.00	0.00	
1,350.0	27.68	88.96	1,288.5	5.9	324.1	324.2	0.00	0.00	
1,380.0	27.68	88.96	1,315.1	6.2	338.0	338.1	0.00	0.00	
1,410.0	27.68	88.96	1,341.6	6.4	352.0	352.0	0.00	0.00	
1,440.0	27.68	88.96	1,368.2	6.7	365.9	366.0	0.00	0.00	
1,470.0	27.68	88.96	1,394.8	6.9	379.8	379.9	0.00	0.00	

Planning Report

Database:	USA EDM 5000 US Multi Users DB	Local Co-ordinate Reference:	Well NP MF14C-3 O04 696 (was 14D-3)
Company:	EnCana Oil & Gas (USA) Inc	TVD Reference:	WELL @ 6044.0ft (Original Well Elev)
Project:	North Piceance	MD Reference:	WELL @ 6044.0ft (Original Well Elev)
Site:	O04 696 (3rd)	North Reference:	True
Well:	NP MF14C-3 O04 696 (was 14D-3)	Survey Calculation Method:	Minimum Curvature
Wellbore:	DD		
Design:	Plan #2		

Planned Survey

Measured Depth (ft)	Inclination (°)	Azimuth (°)	Vertical Depth (ft)	+N/-S (ft)	+E/-W (ft)	Vertical Section (ft)	Dogleg Rate (°/100ft)	Build Rate (°/100ft)	Comments / Formations
1,500.0	27.68	88.96	1,421.4	7.2	393.8	393.8	0.00	0.00	
1,530.0	27.68	88.96	1,447.9	7.4	407.7	407.8	0.00	0.00	
1,560.0	27.68	88.96	1,474.5	7.7	421.6	421.7	0.00	0.00	
1,590.0	27.68	88.96	1,501.1	7.9	435.6	435.6	0.00	0.00	
1,620.0	27.68	88.96	1,527.6	8.2	449.5	449.6	0.00	0.00	
1,650.0	27.68	88.96	1,554.2	8.4	463.4	463.5	0.00	0.00	
1,680.0	27.68	88.96	1,580.8	8.7	477.4	477.4	0.00	0.00	
1,710.0	27.68	88.96	1,607.3	8.9	491.3	491.4	0.00	0.00	
1,740.0	27.68	88.96	1,633.9	9.2	505.2	505.3	0.00	0.00	
1,770.0	27.68	88.96	1,660.5	9.4	519.2	519.2	0.00	0.00	
1,800.0	27.68	88.96	1,687.0	9.7	533.1	533.2	0.00	0.00	
1,830.0	27.68	88.96	1,713.6	10.0	547.0	547.1	0.00	0.00	
1,860.0	27.68	88.96	1,740.2	10.2	561.0	561.0	0.00	0.00	
1,890.0	27.68	88.96	1,766.7	10.5	574.9	575.0	0.00	0.00	
1,920.0	27.68	88.96	1,793.3	10.7	588.8	588.9	0.00	0.00	
1,950.0	27.68	88.96	1,819.9	11.0	602.8	602.8	0.00	0.00	
1,980.0	27.68	88.96	1,846.4	11.2	616.7	616.8	0.00	0.00	
2,010.0	27.68	88.96	1,873.0	11.5	630.6	630.7	0.00	0.00	
2,040.0	27.68	88.96	1,899.6	11.7	644.6	644.6	0.00	0.00	
2,070.0	27.68	88.96	1,926.1	12.0	658.5	658.6	0.00	0.00	
2,100.0	27.68	88.96	1,952.7	12.2	672.4	672.5	0.00	0.00	
2,130.0	27.68	88.96	1,979.3	12.5	686.3	686.4	0.00	0.00	
2,160.0	27.68	88.96	2,005.8	12.7	700.3	700.4	0.00	0.00	
2,190.0	27.68	88.96	2,032.4	13.0	714.2	714.3	0.00	0.00	
2,220.0	27.68	88.96	2,059.0	13.3	728.1	728.2	0.00	0.00	
2,250.0	27.68	88.96	2,085.5	13.5	742.1	742.2	0.00	0.00	
2,280.0	27.68	88.96	2,112.1	13.8	756.0	756.1	0.00	0.00	
2,310.0	27.68	88.96	2,138.7	14.0	769.9	770.0	0.00	0.00	
2,340.0	27.68	88.96	2,165.2	14.3	783.9	784.0	0.00	0.00	
2,370.0	27.68	88.96	2,191.8	14.5	797.8	797.9	0.00	0.00	
2,400.0	27.68	88.96	2,218.4	14.8	811.7	811.9	0.00	0.00	
2,430.0	27.68	88.96	2,244.9	15.0	825.7	825.8	0.00	0.00	
2,460.0	27.68	88.96	2,271.5	15.3	839.6	839.7	0.00	0.00	
2,490.0	27.68	88.96	2,298.1	15.5	853.5	853.7	0.00	0.00	

Targets

Target Name	Dip Angle (°)	Dip Dir. (°)	TVD (ft)	+N/-S (ft)	+E/-W (ft)	Northing (ft)	Easting (ft)	Latitude	Longitude
- hit/miss target									
- Shape									
O04 696 MF14C-3 TGT	0.00	0.00	5,384.0	40.5	2,225.1	1,635,976.70	2,266,958.45	39° 33' 2.64 N	108° 5' 59.94 W
- plan misses target center by 3377.1ft at 2490.0ft MD (2298.1 TVD, 15.5 N, 853.5 E)									
- Point									
O04 696 MF14C-3 BHL	0.00	0.00	8,344.0	30.5	2,208.1	1,635,967.16	2,266,941.14	39° 33' 2.54 N	108° 6' 0.16 W
- plan misses target center by 6195.8ft at 2490.0ft MD (2298.1 TVD, 15.5 N, 853.5 E)									
- Rectangle (sides W30.0 H50.0 D0.0)									

Planning Report

Database: USA EDM 5000 US Multi Users DB
Company: EnCana Oil & Gas (USA) Inc
Project: North Piceance
Site: O04 696 (3rd)
Well: NP MF14C-3 O04 696 (was 14D-3)
Wellbore: DD
Design: Plan #2

Local Co-ordinate Reference: Well NP MF14C-3 O04 696 (was 14D-3)
TVD Reference: WELL @ 6044.0ft (Original Well Elev)
MD Reference: WELL @ 6044.0ft (Original Well Elev)
North Reference: True
Survey Calculation Method: Minimum Curvature

Planned Survey

Measured Depth (ft)	Inclination (°)	Azimuth (°)	Vertical Depth (ft)	+N/-S (ft)	+E/-W (ft)	Vertical Section (ft)	Dogleg Rate (°/100ft)	Build Rate (°/100ft)	Comments / Formations
2,500.0	27.68	88.96	2,306.9	15.6	858.2	858.3	0.00	0.00	
2,600.0	27.68	88.96	2,395.5	16.5	904.6	904.7	0.00	0.00	
2,700.0	27.68	88.96	2,484.1	17.3	951.1	951.2	0.00	0.00	
2,800.0	27.68	88.96	2,572.6	18.2	997.5	997.6	0.00	0.00	
2,900.0	27.68	88.96	2,661.2	19.0	1,043.9	1,044.1	0.00	0.00	
3,000.0	27.68	88.96	2,749.7	19.8	1,090.4	1,090.5	0.00	0.00	
3,100.0	27.68	88.96	2,838.3	20.7	1,136.8	1,137.0	0.00	0.00	
3,200.0	27.68	88.96	2,926.8	21.5	1,183.3	1,183.4	0.00	0.00	
3,300.0	27.68	88.96	3,015.4	22.4	1,229.7	1,229.9	0.00	0.00	
3,400.0	27.68	88.96	3,104.0	23.2	1,276.1	1,276.3	0.00	0.00	
3,500.0	27.68	88.96	3,192.5	24.1	1,322.6	1,322.8	0.00	0.00	
3,600.0	27.68	88.96	3,281.1	24.9	1,369.0	1,369.2	0.00	0.00	
3,700.0	27.68	88.96	3,369.6	25.8	1,415.5	1,415.7	0.00	0.00	
3,800.0	27.68	88.96	3,458.2	26.6	1,461.9	1,462.1	0.00	0.00	
3,900.0	27.68	88.96	3,546.7	27.5	1,508.3	1,508.6	0.00	0.00	
4,000.0	27.68	88.96	3,635.3	28.3	1,554.8	1,555.0	0.00	0.00	
4,100.0	27.68	88.96	3,723.9	29.1	1,601.2	1,601.5	0.00	0.00	
4,200.0	27.68	88.96	3,812.4	30.0	1,647.7	1,647.9	0.00	0.00	
4,300.0	27.68	88.96	3,901.0	30.8	1,694.1	1,694.3	0.00	0.00	
4,400.0	27.68	88.96	3,989.5	31.7	1,740.5	1,740.8	0.00	0.00	
4,500.0	27.68	88.96	4,078.1	32.5	1,787.0	1,787.2	0.00	0.00	
4,600.0	27.68	88.96	4,166.7	33.4	1,833.4	1,833.7	0.00	0.00	
4,700.0	27.68	88.96	4,255.2	34.2	1,879.9	1,880.1	0.00	0.00	
4,800.0	27.68	88.96	4,343.8	35.1	1,926.3	1,926.6	0.00	0.00	
4,900.0	27.68	88.96	4,432.3	35.9	1,972.8	1,973.0	0.00	0.00	
4,972.9	27.68	88.96	4,496.9	36.5	2,006.6	2,006.9	0.00	0.00	Start Drop -3.00
5,000.0	26.86	88.96	4,521.0	36.7	2,019.0	2,019.3	3.00	-3.00	
5,100.0	23.86	88.96	4,611.3	37.5	2,061.8	2,062.1	3.00	-3.00	
5,200.0	20.86	88.96	4,703.8	38.2	2,099.9	2,100.2	3.00	-3.00	
5,300.0	17.86	88.96	4,798.1	38.8	2,133.0	2,133.3	3.00	-3.00	
5,348.0	16.42	88.96	4,844.0	39.1	2,147.2	2,147.5	3.00	-3.00	Williams Fork
5,389.6	15.18	88.96	4,884.0	39.3	2,158.5	2,158.8	3.00	-3.00	Top of Gas; Inc=15°
5,400.0	14.86	88.96	4,894.1	39.3	2,161.2	2,161.5	3.00	-3.00	
5,500.0	11.86	88.96	4,991.3	39.8	2,184.3	2,184.6	3.00	-3.00	
5,600.0	8.86	88.96	5,089.7	40.1	2,202.3	2,202.6	3.00	-3.00	
5,700.0	5.86	88.96	5,188.9	40.3	2,215.1	2,215.4	3.00	-3.00	
5,800.0	2.86	88.96	5,288.6	40.5	2,222.7	2,223.0	3.00	-3.00	
5,895.5	0.00	0.00	5,384.0	40.5	2,225.1	2,225.4	3.00	-3.00	EOD; Inc=0° - O04 696 MF14C-3 TGT (6.13.11)
5,900.0	0.01	239.49	5,388.5	40.5	2,225.1	2,225.4	0.25	0.25	
6,000.0	0.26	239.49	5,488.5	40.4	2,224.9	2,225.2	0.25	0.25	
6,052.7	0.39	239.49	5,541.2	40.2	2,224.6	2,224.9	0.25	0.25	
6,100.0	0.39	239.49	5,588.5	40.1	2,224.4	2,224.7	0.00	0.00	
6,200.0	0.39	239.49	5,688.5	39.7	2,223.8	2,224.1	0.00	0.00	
6,300.0	0.39	239.49	5,788.5	39.4	2,223.2	2,223.5	0.00	0.00	
6,400.0	0.39	239.49	5,888.5	39.0	2,222.6	2,222.9	0.00	0.00	
6,500.0	0.39	239.49	5,988.5	38.7	2,222.0	2,222.3	0.00	0.00	
6,600.0	0.39	239.49	6,088.5	38.3	2,221.4	2,221.7	0.00	0.00	
6,700.0	0.39	239.49	6,188.5	38.0	2,220.8	2,221.1	0.00	0.00	
6,800.0	0.39	239.49	6,288.5	37.6	2,220.2	2,220.5	0.00	0.00	
6,900.0	0.39	239.49	6,388.5	37.3	2,219.6	2,219.9	0.00	0.00	
7,000.0	0.39	239.49	6,488.5	36.9	2,219.0	2,219.3	0.00	0.00	
7,100.0	0.39	239.49	6,588.5	36.6	2,218.4	2,218.7	0.00	0.00	

Planning Report

Database:	USA EDM 5000 US Multi Users DB	Local Co-ordinate Reference:	Well NP MF14C-3 O04 696 (was 14D-3)
Company:	EnCana Oil & Gas (USA) Inc	TVD Reference:	WELL @ 6044.0ft (Original Well Elev)
Project:	North Piceance	MD Reference:	WELL @ 6044.0ft (Original Well Elev)
Site:	O04 696 (3rd)	North Reference:	True
Well:	NP MF14C-3 O04 696 (was 14D-3)	Survey Calculation Method:	Minimum Curvature
Wellbore:	DD		
Design:	Plan #2		

Planned Survey									
Measured Depth (ft)	Inclination (°)	Azimuth (°)	Vertical Depth (ft)	+N/-S (ft)	+E/-W (ft)	Vertical Section (ft)	Dogleg Rate (°/100ft)	Build Rate (°/100ft)	Comments / Formations
7,200.0	0.39	239.49	6,688.5	36.2	2,217.9	2,218.1	0.00	0.00	
7,300.0	0.39	239.49	6,788.5	35.9	2,217.3	2,217.5	0.00	0.00	
7,400.0	0.39	239.49	6,888.5	35.5	2,216.7	2,216.9	0.00	0.00	
7,500.0	0.39	239.49	6,988.5	35.2	2,216.1	2,216.3	0.00	0.00	
7,600.0	0.39	239.49	7,088.5	34.8	2,215.5	2,215.7	0.00	0.00	
7,700.0	0.39	239.49	7,188.5	34.5	2,214.9	2,215.1	0.00	0.00	
7,800.0	0.39	239.49	7,288.5	34.1	2,214.3	2,214.6	0.00	0.00	
7,900.0	0.39	239.49	7,388.5	33.8	2,213.7	2,214.0	0.00	0.00	
8,000.0	0.39	239.49	7,488.5	33.4	2,213.1	2,213.4	0.00	0.00	
8,100.0	0.39	239.49	7,588.5	33.1	2,212.5	2,212.8	0.00	0.00	
8,200.0	0.39	239.49	7,688.5	32.7	2,211.9	2,212.2	0.00	0.00	
8,300.0	0.39	239.49	7,788.5	32.4	2,211.4	2,211.6	0.00	0.00	
8,400.0	0.39	239.49	7,888.5	32.1	2,210.8	2,211.0	0.00	0.00	
8,500.0	0.39	239.49	7,988.5	31.7	2,210.2	2,210.4	0.00	0.00	
8,600.0	0.39	239.49	8,088.5	31.4	2,209.6	2,209.8	0.00	0.00	
8,700.0	0.39	239.49	8,188.5	31.0	2,209.0	2,209.2	0.00	0.00	
8,800.0	0.39	239.49	8,288.5	30.7	2,208.4	2,208.6	0.00	0.00	
8,855.5	0.39	239.49	8,344.0	30.5	2,208.1	2,208.3	0.00	0.00	Rollins - O04 696 MF14C-3 BHL (6.13.11)
8,900.0	0.39	239.49	8,388.5	30.3	2,207.8	2,208.0	0.00	0.00	
9,000.0	0.39	239.49	8,488.5	30.0	2,207.2	2,207.4	0.00	0.00	
9,005.5	0.39	239.49	8,494.0	29.9	2,207.2	2,207.4	0.00	0.00	Drillers TD @ 8494' TVD
9,100.0	0.39	239.49	8,588.5	29.6	2,206.6	2,206.8	0.00	0.00	
9,200.0	0.39	239.49	8,688.5	29.3	2,206.0	2,206.2	0.00	0.00	
9,300.0	0.39	239.49	8,788.4	28.9	2,205.4	2,205.6	0.00	0.00	
9,400.0	0.39	239.49	8,888.4	28.6	2,204.9	2,205.0	0.00	0.00	
9,500.0	0.39	239.49	8,988.4	28.2	2,204.3	2,204.4	0.00	0.00	
9,600.0	0.39	239.49	9,088.4	27.9	2,203.7	2,203.8	0.00	0.00	
9,700.0	0.39	239.49	9,188.4	27.5	2,203.1	2,203.3	0.00	0.00	
9,800.0	0.39	239.49	9,288.4	27.2	2,202.5	2,202.7	0.00	0.00	
9,900.0	0.39	239.49	9,388.4	26.8	2,201.9	2,202.1	0.00	0.00	
10,000.0	0.39	239.49	9,488.4	26.5	2,201.3	2,201.5	0.00	0.00	
10,100.0	0.39	239.49	9,588.4	26.1	2,200.7	2,200.9	0.00	0.00	
10,200.0	0.39	239.49	9,688.4	25.8	2,200.1	2,200.3	0.00	0.00	
10,300.0	0.39	239.49	9,788.4	25.4	2,199.5	2,199.7	0.00	0.00	
10,400.0	0.39	239.49	9,888.4	25.1	2,198.9	2,199.1	0.00	0.00	
10,500.0	0.39	239.49	9,988.4	24.7	2,198.4	2,198.5	0.00	0.00	
10,511.6	0.39	239.49	10,000.0	24.7	2,198.3	2,198.4	0.00	0.00	Permit TD @ 10000' TVD

Targets									
Target Name	Dip Angle (°)	Dip Dir. (°)	TVD (ft)	+N/-S (ft)	+E/-W (ft)	Northing (ft)	Easting (ft)	Latitude	Longitude
- hit/miss target									
- Shape									
O04 696 MF14C-3 TGT	0.00	0.00	5,384.0	40.5	2,225.1	1,635,976.70	2,266,958.45	39° 33' 2.64 N	108° 5' 59.94 W
- plan hits target center									
- Point									
O04 696 MF14C-3 BHL	0.00	0.00	8,344.0	30.5	2,208.1	1,635,967.16	2,266,941.14	39° 33' 2.54 N	108° 6' 0.16 W
- plan hits target center									
- Rectangle (sides W30.0 H50.0 D0.0)									

Planning Report

Database:	USA EDM 5000 US Multi Users DB	Local Co-ordinate Reference:	Well NP MF14C-3 O04 696 (was 14D-3)
Company:	EnCana Oil & Gas (USA) Inc	TVD Reference:	WELL @ 6044.0ft (Original Well Elev)
Project:	North Piceance	MD Reference:	WELL @ 6044.0ft (Original Well Elev)
Site:	O04 696 (3rd)	North Reference:	True
Well:	NP MF14C-3 O04 696 (was 14D-3)	Survey Calculation Method:	Minimum Curvature
Wellbore:	DD		
Design:	Plan #2		

Formations					
Measured Depth (ft)	Vertical Depth (ft)	Name	Lithology	Dip (°)	Dip Direction (°)
5,348.0	4,844.0	Williams Fork		0.00	
5,389.6	4,884.0	Top of Gas; Inc=15°		0.00	
8,855.5	8,344.0	Rollins		0.00	

Plan Annotations				
Measured Depth (ft)	Vertical Depth (ft)	Local Coordinates		Comment
		+N/-S (ft)	+E/-W (ft)	
200.0	200.0	0.0	0.0	KOP @ 200'
1,122.6	1,087.1	4.0	218.5	EOB; Inc=27.68°
4,972.9	4,496.9	36.5	2,006.6	Start Drop -3.00
5,895.5	5,384.0	40.5	2,225.1	EOD; Inc=0°
9,005.5	8,494.0	40.2	2,224.6	Drillers TD @ 8494' TVD
10,511.6	10,000.0	30.5	2,208.1	Permit TD @ 10000' TVD

EnCana Oil & Gas (USA) Inc

North Piceance

O04 696 (3rd)

NP MF14C-3 O04 696 (was 14D-3)

DD

Plan #2

Anticollision Report

15 June, 2011

Anticollision Report

Company:	EnCana Oil & Gas (USA) Inc	Local Co-ordinate Reference:	Well NP MF14C-3 O04 696 (was 14D-3)
Project:	North Piceance	TVD Reference:	WELL @ 6044.0ft (Original Well Elev)
Reference Site:	O04 696 (3rd)	MD Reference:	WELL @ 6044.0ft (Original Well Elev)
Site Error:	0.0ft	North Reference:	True
Reference Well:	NP MF14C-3 O04 696 (was 14D-3)	Survey Calculation Method:	Minimum Curvature
Well Error:	0.0ft	Output errors are at	2.00 sigma
Reference Wellbore	DD	Database:	USA EDM 5000 US Multi Users DB
Reference Design:	Plan #2	Offset TVD Reference:	Offset Datum

Reference	Plan #2		
Filter type:	NO GLOBAL FILTER: Using user defined selection & filtering criteria		
Interpolation Method:	MD Interval 100.0ft	Error Model:	Systematic Ellipse
Depth Range:	Unlimited	Scan Method:	Closest Approach 3D
Results Limited by:	Maximum center-center distance of 100.0ft	Error Surface:	Elliptical Conic
Warning Levels Evaluated at:	2.00 Sigma		

Survey Tool Program		Date	6/15/2011		
From (ft)	To (ft)	Survey (Wellbore)	Tool Name	Description	
0.0	10,511.6	Plan #2 (DD)	MWD	Geolink MWD	

Anticollision Report

Company:	EnCana Oil & Gas (USA) Inc	Local Co-ordinate Reference:	Well NP MF14C-3 O04 696 (was 14D-3)
Project:	North Piceance	TVD Reference:	WELL @ 6044.0ft (Original Well Elev)
Reference Site:	O04 696 (3rd)	MD Reference:	WELL @ 6044.0ft (Original Well Elev)
Site Error:	0.0ft	North Reference:	True
Reference Well:	NP MF14C-3 O04 696 (was 14D-3)	Survey Calculation Method:	Minimum Curvature
Well Error:	0.0ft	Output errors are at	2.00 sigma
Reference Wellbore	DD	Database:	USA EDM 5000 US Multi Users DB
Reference Design:	Plan #2	Offset TVD Reference:	Offset Datum

Summary

Site Name	Reference Measured Depth (ft)	Offset Measured Depth (ft)	Distance Between Centres (ft)	Distance Between Ellipses (ft)	Separation Factor	Warning
Offset Well - Wellbore - Design						
N04 696 Pad (NESW Sec4-T6S-R96W)						
NP MF16A N04 696 - DD - DD						Out of range
NP MF17A N04 696 - DD - DD						Out of range
NP MF17A N04 696 - DD - Plan #1						Out of range
NP MF17A N04 696 - DD - Plan #3						Out of range
O04 696 (3rd)						
NP MF01D-9 O04 696 (was 17C-4) - DD - Plan #2	200.0	200.0	56.0	55.4	90.161	CC, ES
NP MF01D-9 O04 696 (was 17C-4) - DD - Plan #2	500.0	494.6	81.2	79.4	45.312	SF
NP MF02A-9 O04 696 (was 18C-4) - DD - Plan #2	200.0	200.0	83.9	83.3	135.078	CC, ES
NP MF02A-9 O04 696 (was 18C-4) - DD - Plan #2	400.0	391.7	99.7	98.4	74.067	SF
NP MF06A-3 O04 696 (was 11C-3) - DD - Plan #2	200.0	200.0	36.9	36.3	59.352	CC, ES
NP MF06A-3 O04 696 (was 11C-3) - DD - Plan #2	500.0	491.4	56.3	54.5	30.969	SF
NP MF06B-3 O04 696 (was 15A-4) - DD - Plan #2	200.0	200.0	57.0	56.4	91.796	CC, ES
NP MF06B-3 O04 696 (was 15A-4) - DD - Plan #2	700.0	680.0	97.5	94.3	30.606	SF
NP MF06C-3 O04 696 (was 09C-4) - DD - Plan #2	200.0	200.0	64.6	64.0	104.043	CC, ES
NP MF06C-3 O04 696 (was 09C-4) - DD - Plan #2	600.0	584.4	90.8	88.4	38.357	SF
NP MF06E-3 O04 696 (was 11B-3) - DD - Plan #2	200.0	200.0	64.5	63.8	103.739	CC, ES
NP MF06E-3 O04 696 (was 11B-3) - DD - Plan #2	800.0	776.6	97.5	93.4	23.827	SF
NP MF08B-9 O04 696 (was 01B-9) - DD - Plan #2	200.0	200.0	76.0	75.4	122.278	CC, ES
NP MF08B-9 O04 696 (was 01B-9) - DD - Plan #2	400.0	394.3	89.0	87.6	64.786	SF
NP MF11A-3 O04 696 (was 12C-3) - DD - Plan #2	407.3	404.1	52.9	51.5	38.122	CC, ES
NP MF11A-3 O04 696 (was 12C-3) - DD - Plan #2	800.0	781.1	92.4	88.4	23.102	SF
NP MF11B-3 O04 696 (was 14A-3) - DD - Plan #2	200.0	200.0	35.8	35.2	57.662	CC, ES
NP MF11B-3 O04 696 (was 14A-3) - DD - Plan #2	900.0	879.8	99.4	93.9	18.022	SF
NP MF11D-3 O04 696 (was 14B-3) - DD - Plan #2	200.0	200.0	28.2	27.5	45.306	CC, ES
NP MF11D-3 O04 696 (was 14B-3) - DD - Plan #2	1,000.0	981.5	99.8	92.8	14.136	SF
NP MF11E-3 O04 696 (was 13A-3) - DD - Plan #2	200.0	200.0	11.2	10.6	18.089	CC, ES
NP MF11E-3 O04 696 (was 13A-3) - DD - Plan #2	600.0	598.6	28.4	25.7	10.535	SF
NP MF11G-3 O04 696 (was 14C-3) - DD - Plan #2	200.0	200.0	8.1	7.4	12.962	CC, ES
NP MF11G-3 O04 696 (was 14C-3) - DD - Plan #2	1,400.0	1,411.0	92.6	80.3	7.548	SF
NP MF14A-3 O04 696 (was 13B-3) - DD - Plan #2	200.0	200.0	7.7	7.1	12.356	CC
NP MF14A-3 O04 696 (was 13B-3) - DD - Plan #2	300.0	299.7	8.0	7.0	8.133	ES
NP MF14A-3 O04 696 (was 13B-3) - DD - Plan #2	1,200.0	1,195.7	44.5	33.5	4.065	SF
NP MF14D-3 O04 696 (was 19A-3) - DD - Plan #2	200.0	200.0	21.3	20.7	34.359	CC, ES
NP MF14D-3 O04 696 (was 19A-3) - DD - Plan #2	2,400.0	2,418.8	99.5	69.3	3.296	SF
NP MF14E-3 O04 696 (was 19B-3) - DD - Plan #2	200.0	200.0	19.7	19.1	31.678	CC, ES
NP MF14E-3 O04 696 (was 19B-3) - DD - Plan #2	1,200.0	1,199.0	89.2	78.3	8.194	SF
NP MF15A-4 O04 696 (was 11D-3) - DD - Plan #2	200.0	200.0	29.4	28.8	47.377	CC, ES
NP MF15A-4 O04 696 (was 11D-3) - DD - Plan #2	400.0	396.3	37.1	35.7	27.039	SF
NP MF15D-4 O04 696 (was 01B-9) - DD - Plan #2	200.0	200.0	76.3	75.7	122.805	CC, ES
NP MF15D-4 O04 696 (was 01B-9) - DD - Plan #2	500.0	494.5	99.1	97.4	57.919	SF
NP MF18B-4 O04 696 (was 01A-9) - DD - Plan #2	200.0	200.0	83.7	83.0	134.634	CC, ES
NP MF18B-4 O04 696 (was 01A-9) - DD - Plan #2	400.0	392.2	98.3	97.0	72.532	SF
NP MF19A-3 O04 696 (was 17B-4) - DD - Plan #2	200.0	200.0	29.1	28.5	46.868	CC, ES
NP MF19A-3 O04 696 (was 17B-4) - DD - Plan #2	1,000.0	1,004.1	94.2	87.6	14.324	SF
NP MF19C-3 O04 696 (was 20B-3) - DD - Plan #2	200.0	200.0	28.2	27.5	45.306	CC, ES
NP MF19C-3 O04 696 (was 20B-3) - DD - Plan #2	900.0	894.7	95.1	89.4	16.466	SF
NP MF19D-3 O04 696 (was 19C-3) - DD - Plan #2	200.0	200.0	48.4	47.8	77.963	CC, ES
NP MF19D-3 O04 696 (was 19C-3) - DD - Plan #2	700.0	700.9	94.8	92.0	34.287	SF
NP MF19E-3 O04 696 (was 19D-3) - DD - Plan #2	200.0	200.0	47.8	47.2	76.974	CC, ES
NP MF19E-3 O04 696 (was 19D-3) - DD - Plan #2	700.0	696.7	89.0	85.6	25.708	SF
NP MF20F-3 O04 696 (was 20D-3) - DD - Plan #2	200.0	200.0	55.5	54.9	89.330	CC, ES
NP MF20F-3 O04 696 (was 20D-3) - DD - Plan #2	600.0	595.2	89.1	86.5	34.503	SF

CC - Min centre to center distance or convergent point, SF - min separation factor, ES - min ellipse separation

Anticollision Report

Company:	EnCana Oil & Gas (USA) Inc	Local Co-ordinate Reference:	Well NP MF14C-3 O04 696 (was 14D-3)
Project:	North Piceance	TVD Reference:	WELL @ 6044.0ft (Original Well Elev)
Reference Site:	O04 696 (3rd)	MD Reference:	WELL @ 6044.0ft (Original Well Elev)
Site Error:	0.0ft	North Reference:	True
Reference Well:	NP MF14C-3 O04 696 (was 14D-3)	Survey Calculation Method:	Minimum Curvature
Well Error:	0.0ft	Output errors are at	2.00 sigma
Reference Wellbore	DD	Database:	USA EDM 5000 US Multi Users DB
Reference Design:	Plan #2	Offset TVD Reference:	Offset Datum

Summary						
Site Name	Reference Measured Depth (ft)	Offset Measured Depth (ft)	Distance Between Centres (ft)	Distance Between Ellipses (ft)	Separation Factor	Warning
Offset Well - Wellbore - Design						

Anticollision Report

Company:	EnCana Oil & Gas (USA) Inc	Local Co-ordinate Reference:	Well NP MF14C-3 O04 696 (was 14D-3)
Project:	North Piceance	TVD Reference:	WELL @ 6044.0ft (Original Well Elev)
Reference Site:	O04 696 (3rd)	MD Reference:	WELL @ 6044.0ft (Original Well Elev)
Site Error:	0.0ft	North Reference:	True
Reference Well:	NP MF14C-3 O04 696 (was 14D-3)	Survey Calculation Method:	Minimum Curvature
Well Error:	0.0ft	Output errors are at	2.00 sigma
Reference Wellbore	DD	Database:	USA EDM 5000 US Multi Users DB
Reference Design:	Plan #2	Offset TVD Reference:	Offset Datum

Offset Design													O04 696 (3rd) - NP MF01D-9 O04 696 (was 17C-4) - DD - Plan #2		Offset Site Error:		0.0 ft	
Survey Program: 0-MWD													Offset Well Error:		0.0 ft			
Reference		Offset		Semi Major Axis			Distance							Warning				
Measured Depth	Vertical Depth	Measured Depth	Vertical Depth	Reference	Offset	Highside Toolface	Offset Wellbore Centre +N/-S	+E/-W	Between Centres	Between Ellipses	Total Uncertainty Axis	Separation Factor						
(ft)	(ft)	(ft)	(ft)	(ft)	(ft)	(°)	(ft)	(ft)	(ft)	(ft)								
0.0	0.0	0.0	0.0	0.0	0.0	-133.36	-38.5	-40.7	56.0									
100.0	100.0	100.0	100.0	0.1	0.1	-133.36	-38.5	-40.7	56.0	55.7	0.27	205.751						
200.0	200.0	200.0	200.0	0.3	0.3	-133.36	-38.5	-40.7	56.0	55.4	0.62	90.161 CC, ES						
300.0	300.0	299.3	299.2	0.5	0.5	138.81	-39.1	-40.6	58.3	57.3	0.97	59.913						
400.0	399.6	397.4	397.3	0.7	0.7	139.18	-44.0	-39.3	66.6	65.3	1.35	49.295						
500.0	498.8	494.6	493.9	1.0	0.9	138.51	-53.6	-36.9	81.2	79.4	1.79	45.312 SF						

Anticollision Report

Company:	EnCana Oil & Gas (USA) Inc	Local Co-ordinate Reference:	Well NP MF14C-3 O04 696 (was 14D-3)
Project:	North Piceance	TVD Reference:	WELL @ 6044.0ft (Original Well Elev)
Reference Site:	O04 696 (3rd)	MD Reference:	WELL @ 6044.0ft (Original Well Elev)
Site Error:	0.0ft	North Reference:	True
Reference Well:	NP MF14C-3 O04 696 (was 14D-3)	Survey Calculation Method:	Minimum Curvature
Well Error:	0.0ft	Output errors are at	2.00 sigma
Reference Wellbore	DD	Database:	USA EDM 5000 US Multi Users DB
Reference Design:	Plan #2	Offset TVD Reference:	Offset Datum

Offset Design													Offset Site Error:		0.0 ft
Survey Program: 0-MWD													Offset Well Error:		0.0 ft
Reference		Offset		Semi Major Axis			Distance						Warning		
Measured Depth	Vertical Depth	Measured Depth	Vertical Depth	Reference	Offset	Highside Toolface	Offset Wellbore Centre	Between Centres	Between Ellipses	Total Uncertainty Axis	Separation Factor				
(ft)	(ft)	(ft)	(ft)	(ft)	(ft)	(°)	+N/-S (ft)	+E/-W (ft)	(ft)	(ft)					
0.0	0.0	0.0	0.0	0.0	0.0	-136.32	-60.7	-58.0	83.9						
100.0	100.0	100.0	100.0	0.1	0.1	-136.32	-60.7	-58.0	83.9	83.7	0.27	308.255			
200.0	200.0	200.0	200.0	0.3	0.3	-136.32	-60.7	-58.0	83.9	83.3	0.62	135.078 CC, ES			
300.0	300.0	296.3	296.3	0.5	0.5	134.94	-63.1	-58.4	87.9	86.9	0.97	90.571			
400.0	399.6	391.7	391.4	0.7	0.7	135.48	-70.1	-59.7	99.7	98.4	1.35	74.067 SF			

Anticollision Report

Company:	EnCana Oil & Gas (USA) Inc	Local Co-ordinate Reference:	Well NP MF14C-3 O04 696 (was 14D-3)
Project:	North Piceance	TVD Reference:	WELL @ 6044.0ft (Original Well Elev)
Reference Site:	O04 696 (3rd)	MD Reference:	WELL @ 6044.0ft (Original Well Elev)
Site Error:	0.0ft	North Reference:	True
Reference Well:	NP MF14C-3 O04 696 (was 14D-3)	Survey Calculation Method:	Minimum Curvature
Well Error:	0.0ft	Output errors are at	2.00 sigma
Reference Wellbore	DD	Database:	USA EDM 5000 US Multi Users DB
Reference Design:	Plan #2	Offset TVD Reference:	Offset Datum

Offset Design		O04 696 (3rd) - NP MF06A-3 O04 696 (was 11C-3) - DD - Plan #2											Offset Site Error:		0.0 ft		
Survey Program:		0-MWD													Offset Well Error:		0.0 ft
Reference		Offset		Semi Major Axis			Distance									Warning	
Measured Depth (ft)	Vertical Depth (ft)	Measured Depth (ft)	Vertical Depth (ft)	Reference (ft)	Offset (ft)	Highside Toolface (°)	Offset Wellbore Centre +N/-S (ft)		+E/-W (ft)	Between Centres (ft)	Between Ellipses (ft)	Total Uncertainty Axis	Separation Factor				
0.0	0.0	0.0	0.0	0.0	0.0	25.14	33.4		15.7	36.9							
100.0	100.0	100.0	100.0	0.1	0.1	25.14	33.4		15.7	36.9	36.6	0.27	135.444				
200.0	200.0	200.0	200.0	0.3	0.3	25.14	33.4		15.7	36.9	36.3	0.62	59.352 CC, ES				
300.0	300.0	298.2	298.1	0.5	0.5	-68.85	35.9		15.7	38.2	37.2	0.98	39.161				
400.0	399.6	395.5	395.2	0.7	0.7	-81.52	43.4		15.7	43.7	42.4	1.37	32.004				
500.0	498.8	491.4	490.3	1.0	1.0	-95.61	55.6		15.7	56.3	54.5	1.82	30.969 SF				
600.0	597.1	585.1	582.5	1.4	1.3	-106.44	72.1		15.7	77.3	75.0	2.35	32.881				

Anticollision Report

Company:	EnCana Oil & Gas (USA) Inc	Local Co-ordinate Reference:	Well NP MF14C-3 O04 696 (was 14D-3)
Project:	North Piceance	TVD Reference:	WELL @ 6044.0ft (Original Well Elev)
Reference Site:	O04 696 (3rd)	MD Reference:	WELL @ 6044.0ft (Original Well Elev)
Site Error:	0.0ft	North Reference:	True
Reference Well:	NP MF14C-3 O04 696 (was 14D-3)	Survey Calculation Method:	Minimum Curvature
Well Error:	0.0ft	Output errors are at	2.00 sigma
Reference Wellbore	DD	Database:	USA EDM 5000 US Multi Users DB
Reference Design:	Plan #2	Offset TVD Reference:	Offset Datum

Offset Design O04 696 (3rd) - NP MF06B-3 O04 696 (was 15A-4) - DD - Plan #2													Offset Site Error:	0.0 ft
Survey Program: 0-MWD													Offset Well Error:	0.0 ft
Reference		Offset		Semi Major Axis			Distance						Warning	
Measured Depth (ft)	Vertical Depth (ft)	Measured Depth (ft)	Vertical Depth (ft)	Reference (ft)	Offset (ft)	Highside Toolface (°)	Offset Wellbore Centre +N/-S (ft) +E/-W (ft)		Between Centres (ft)	Between Ellipses (ft)	Total Uncertainty Axis	Separation Factor		
0.0	0.0	0.0	0.0	0.0	0.0	29.63	49.6	28.2	57.0					
100.0	100.0	100.0	100.0	0.1	0.1	29.63	49.6	28.2	57.0	56.8	0.27	209.482		
200.0	200.0	200.0	200.0	0.3	0.3	29.63	49.6	28.2	57.0	56.4	0.62	91.796 CC, ES		
300.0	300.0	297.1	297.0	0.5	0.5	-61.09	51.5	29.7	58.2	57.3	0.97	59.916		
400.0	399.6	393.9	393.6	0.7	0.7	-65.90	57.3	34.3	62.2	60.8	1.36	45.767		
500.0	498.8	490.2	489.0	1.0	1.0	-72.56	66.9	41.8	69.6	67.8	1.83	38.102		
600.0	597.1	585.6	583.0	1.4	1.3	-79.58	80.1	52.2	81.2	78.8	2.43	33.493		
700.0	694.3	680.0	675.0	1.8	1.7	-85.88	96.8	65.3	97.5	94.3	3.19	30.606 SF		

Anticollision Report

Company:	EnCana Oil & Gas (USA) Inc	Local Co-ordinate Reference:	Well NP MF14C-3 O04 696 (was 14D-3)
Project:	North Piceance	TVD Reference:	WELL @ 6044.0ft (Original Well Elev)
Reference Site:	O04 696 (3rd)	MD Reference:	WELL @ 6044.0ft (Original Well Elev)
Site Error:	0.0ft	North Reference:	True
Reference Well:	NP MF14C-3 O04 696 (was 14D-3)	Survey Calculation Method:	Minimum Curvature
Well Error:	0.0ft	Output errors are at	2.00 sigma
Reference Wellbore	DD	Database:	USA EDM 5000 US Multi Users DB
Reference Design:	Plan #2	Offset TVD Reference:	Offset Datum

Offset Design		O04 696 (3rd) - NP MF06C-3 O04 696 (was 09C-4) - DD - Plan #2											Offset Site Error:		0.0 ft		
Survey Program:		0-MWD													Offset Well Error:		0.0 ft
Reference		Offset		Semi Major Axis			Distance									Warning	
Measured Depth (ft)	Vertical Depth (ft)	Measured Depth (ft)	Vertical Depth (ft)	Reference (ft)	Offset (ft)	Highside Toolface (°)	Offset Wellbore Centre +N/-S (ft) +E/-W (ft)		Between Centres (ft)	Between Ellipses (ft)	Total Uncertainty Axis	Separation Factor					
0.0	0.0	0.0	0.0	0.0	0.0	30.59	55.6	32.9	64.6								
100.0	100.0	100.0	100.0	0.1	0.1	30.59	55.6	32.9	64.6	64.4	0.27	237.430					
200.0	200.0	200.0	200.0	0.3	0.3	30.59	55.6	32.9	64.6	64.0	0.62	104.043 CC, ES					
300.0	300.0	297.1	297.0	0.5	0.5	-61.36	58.1	32.9	65.5	64.6	0.97	67.306					
400.0	399.6	393.4	393.1	0.7	0.7	-69.56	65.4	32.9	69.2	67.9	1.36	50.871					
500.0	498.8	489.2	488.2	1.0	0.9	-78.92	76.3	35.4	77.5	75.7	1.81	42.807					
600.0	597.1	584.4	582.1	1.4	1.2	-87.16	90.3	41.5	90.8	88.4	2.37	38.357 SF					

Anticollision Report

Company:	EnCana Oil & Gas (USA) Inc	Local Co-ordinate Reference:	Well NP MF14C-3 O04 696 (was 14D-3)
Project:	North Piceance	TVD Reference:	WELL @ 6044.0ft (Original Well Elev)
Reference Site:	O04 696 (3rd)	MD Reference:	WELL @ 6044.0ft (Original Well Elev)
Site Error:	0.0ft	North Reference:	True
Reference Well:	NP MF14C-3 O04 696 (was 14D-3)	Survey Calculation Method:	Minimum Curvature
Well Error:	0.0ft	Output errors are at	2.00 sigma
Reference Wellbore	DD	Database:	USA EDM 5000 US Multi Users DB
Reference Design:	Plan #2	Offset TVD Reference:	Offset Datum

Offset Design													Offset Site Error:		0.0 ft
Survey Program: 0-MWD													Offset Well Error:		0.0 ft
Reference		Offset		Semi Major Axis			Distance							Warning	
Measured Depth Depth (ft)	Vertical Depth (ft)	Measured Depth (ft)	Vertical Depth (ft)	Reference (ft)	Offset (ft)	Highside Toolface (°)	Offset Wellbore +N/-S (ft)	Centre +E/-W (ft)	Between Centres (ft)	Between Ellipses (ft)	Total Uncertainty Axis	Separation Factor			
0.0	0.0	0.0	0.0	0.0	0.0	38.30	50.6	39.9	64.5						
100.0	100.0	100.0	100.0	0.1	0.1	38.30	50.6	39.9	64.5	64.2	0.27	236.737			
200.0	200.0	200.0	200.0	0.3	0.3	38.30	50.6	39.9	64.5	63.8	0.62	103.739	CC, ES		
300.0	300.0	297.1	297.1	0.5	0.5	-51.30	51.5	42.2	65.0	64.0	0.97	66.843			
400.0	399.6	394.2	393.9	0.7	0.7	-53.16	54.3	49.1	66.7	65.4	1.36	49.065			
500.0	498.8	490.9	489.8	1.0	1.0	-56.34	59.2	60.2	69.9	68.1	1.82	38.494			
600.0	597.1	586.9	584.3	1.4	1.3	-61.63	67.6	74.4	75.5	73.1	2.39	31.588			
700.0	694.3	682.2	677.3	1.8	1.7	-68.15	79.6	91.5	84.5	81.4	3.14	26.907			
800.0	790.2	776.6	768.3	2.4	2.2	-74.80	95.1	111.2	97.5	93.4	4.09	23.827	SF		

Anticollision Report

Company:	EnCana Oil & Gas (USA) Inc	Local Co-ordinate Reference:	Well NP MF14C-3 O04 696 (was 14D-3)
Project:	North Piceance	TVD Reference:	WELL @ 6044.0ft (Original Well Elev)
Reference Site:	O04 696 (3rd)	MD Reference:	WELL @ 6044.0ft (Original Well Elev)
Site Error:	0.0ft	North Reference:	True
Reference Well:	NP MF14C-3 O04 696 (was 14D-3)	Survey Calculation Method:	Minimum Curvature
Well Error:	0.0ft	Output errors are at	2.00 sigma
Reference Wellbore	DD	Database:	USA EDM 5000 US Multi Users DB
Reference Design:	Plan #2	Offset TVD Reference:	Offset Datum

Offset Design													Offset Site Error:		0.0 ft
Survey Program: 0-MWD													Offset Well Error:		0.0 ft
Reference		Offset		Semi Major Axis			Distance						Warning		
Measured Depth	Vertical Depth	Measured Depth	Vertical Depth	Reference	Offset	Highside Toolface	Offset Wellbore Centre	Between Centres	Between Ellipses	Total Uncertainty Axis	Separation Factor				
(ft)	(ft)	(ft)	(ft)	(ft)	(ft)	(°)	+N/-S (ft)	+E/-W (ft)	(ft)	(ft)					
0.0	0.0	0.0	0.0	0.0	0.0	-141.79	-59.7	-47.0	76.0						
100.0	100.0	100.0	100.0	0.1	0.1	-141.79	-59.7	-47.0	76.0	75.7	0.27	279.044			
200.0	200.0	200.0	200.0	0.3	0.3	-141.79	-59.7	-47.0	76.0	75.4	0.62	122.278	CC, ES		
300.0	300.0	297.5	297.4	0.5	0.5	129.21	-62.1	-46.4	79.2	78.3	0.98	81.189			
400.0	399.6	394.3	394.0	0.7	0.7	129.06	-69.3	-44.8	89.0	87.6	1.37	64.786	SF		

Anticollision Report

Company:	EnCana Oil & Gas (USA) Inc	Local Co-ordinate Reference:	Well NP MF14C-3 O04 696 (was 14D-3)
Project:	North Piceance	TVD Reference:	WELL @ 6044.0ft (Original Well Elev)
Reference Site:	O04 696 (3rd)	MD Reference:	WELL @ 6044.0ft (Original Well Elev)
Site Error:	0.0ft	North Reference:	True
Reference Well:	NP MF14C-3 O04 696 (was 14D-3)	Survey Calculation Method:	Minimum Curvature
Well Error:	0.0ft	Output errors are at	2.00 sigma
Reference Wellbore	DD	Database:	USA EDM 5000 US Multi Users DB
Reference Design:	Plan #2	Offset TVD Reference:	Offset Datum

Offset Design													004 696 (3rd) - NP MF11A-3 004 696 (was 12C-3) - DD - Plan #2		Offset Site Error:		0.0 ft	
Survey Program: 0-MWD													Offset Well Error:		0.0 ft			
Reference		Offset		Semi Major Axis			Distance							Warning				
Measured Depth (ft)	Vertical Depth (ft)	Measured Depth (ft)	Vertical Depth (ft)	Reference (ft)	Offset (ft)	Highside Toolface (°)	Offset Wellbore Centre +N/-S (ft)	+E/-W (ft)	Between Centres (ft)	Between Ellipses (ft)	Total Uncertainty Axis	Separation Factor						
0.0	0.0	0.0	0.0	0.0	0.0	37.75	44.5	34.5	56.3									
100.0	100.0	100.0	100.0	0.1	0.1	37.75	44.5	34.5	56.3	56.0	0.27	206.780						
200.0	200.0	200.0	200.0	0.3	0.3	37.75	44.5	34.5	56.3	55.7	0.62	90.612						
300.0	300.0	300.0	300.0	0.5	0.5	-53.39	44.5	34.5	54.7	53.7	0.98	56.069						
400.0	399.6	397.0	397.0	0.7	0.7	-59.86	46.4	36.0	52.9	51.5	1.36	39.028						
407.3	406.9	404.1	404.0	0.7	0.7	-60.49	46.7	36.3	52.9	51.5	1.39	38.122 CC, ES						
500.0	498.8	493.9	493.6	1.0	0.9	-69.88	52.1	40.8	54.7	52.9	1.81	30.208						
600.0	597.1	590.4	589.3	1.4	1.1	-81.12	61.4	48.6	61.5	59.1	2.39	25.746						
700.0	694.3	686.2	683.6	1.8	1.4	-91.04	74.3	59.5	74.1	71.0	3.12	23.775						
800.0	790.2	781.1	776.0	2.4	1.8	-98.49	90.7	73.2	92.4	88.4	4.00	23.102 SF						

Anticollision Report

Company:	EnCana Oil & Gas (USA) Inc	Local Co-ordinate Reference:	Well NP MF14C-3 O04 696 (was 14D-3)
Project:	North Piceance	TVD Reference:	WELL @ 6044.0ft (Original Well Elev)
Reference Site:	O04 696 (3rd)	MD Reference:	WELL @ 6044.0ft (Original Well Elev)
Site Error:	0.0ft	North Reference:	True
Reference Well:	NP MF14C-3 O04 696 (was 14D-3)	Survey Calculation Method:	Minimum Curvature
Well Error:	0.0ft	Output errors are at	2.00 sigma
Reference Wellbore	DD	Database:	USA EDM 5000 US Multi Users DB
Reference Design:	Plan #2	Offset TVD Reference:	Offset Datum

Offset Design													O04 696 (3rd) - NP MF11B-3 O04 696 (was 14A-3) - DD - Plan #2		Offset Site Error:		0.0 ft	
Survey Program:													0-MWD		Offset Well Error:		0.0 ft	
Reference		Offset		Semi Major Axis			Distance											
Measured Depth (ft)	Vertical Depth (ft)	Measured Depth (ft)	Vertical Depth (ft)	Reference (ft)	Offset (ft)	Highside Toolface (°)	Offset Wellbore Centre +N/-S (ft)	+E/-W (ft)	Between Centres (ft)	Between Ellipses (ft)	Total Uncertainty Axis	Separation Factor	Warning					
0.0	0.0	0.0	0.0	0.0	0.0	37.75	28.3	21.9	35.8									
100.0	100.0	100.0	100.0	0.1	0.1	37.75	28.3	21.9	35.8	35.6	0.27	131.588						
200.0	200.0	200.0	200.0	0.3	0.3	37.75	28.3	21.9	35.8	35.2	0.62	57.662	CC, ES					
300.0	300.0	298.2	298.2	0.5	0.5	-53.25	29.8	24.0	36.7	35.7	0.97	37.689						
400.0	399.6	396.3	395.9	0.7	0.7	-58.78	34.3	30.0	39.5	38.2	1.36	29.017						
500.0	498.8	494.0	492.9	1.0	1.0	-66.26	41.8	40.1	44.9	43.1	1.84	24.371						
600.0	597.1	591.4	588.7	1.4	1.3	-73.92	52.1	54.1	53.5	51.0	2.48	21.554						
700.0	694.3	688.2	682.9	1.8	1.8	-80.58	65.2	71.8	65.4	62.1	3.31	19.784						
800.0	790.2	784.4	775.3	2.4	2.3	-85.84	81.1	93.3	80.8	76.4	4.32	18.690						
900.0	884.4	879.8	865.5	3.0	2.9	-89.80	99.5	118.2	99.4	93.9	5.52	18.022	SF					

Anticollision Report

Company:	EnCana Oil & Gas (USA) Inc	Local Co-ordinate Reference:	Well NP MF14C-3 O04 696 (was 14D-3)
Project:	North Piceance	TVD Reference:	WELL @ 6044.0ft (Original Well Elev)
Reference Site:	O04 696 (3rd)	MD Reference:	WELL @ 6044.0ft (Original Well Elev)
Site Error:	0.0ft	North Reference:	True
Reference Well:	NP MF14C-3 O04 696 (was 14D-3)	Survey Calculation Method:	Minimum Curvature
Well Error:	0.0ft	Output errors are at	2.00 sigma
Reference Wellbore	DD	Database:	USA EDM 5000 US Multi Users DB
Reference Design:	Plan #2	Offset TVD Reference:	Offset Datum

Offset Design												004 696 (3rd) - NP MF11D-3 004 696 (was 14B-3) - DD - Plan #2		Offset Site Error:		0.0 ft	
Survey Program: 0-MWD														Offset Well Error:		0.0 ft	
Reference		Offset		Semi Major Axis			Distance										
Measured Depth	Vertical Depth	Measured Depth	Vertical Depth	Reference	Offset	Highside Toolface	Offset Wellbore Centre		Between Centres	Between Ellipses	Total Uncertainty Axis	Separation Factor	Warning				
(ft)	(ft)	(ft)	(ft)	(ft)	(ft)	(°)	+N/-S (ft)	+E/-W (ft)	(ft)	(ft)							
0.0	0.0	0.0	0.0	0.0	0.0	37.75	22.3	17.2	28.2								
100.0	100.0	100.0	100.0	0.1	0.1	37.75	22.3	17.2	28.2	27.9	0.27	103.390					
200.0	200.0	200.0	200.0	0.3	0.3	37.75	22.3	17.2	28.2	27.5	0.62	45.306	CC, ES				
300.0	300.0	298.6	298.6	0.5	0.5	-53.26	23.5	19.4	28.9	27.9	0.97	29.664					
400.0	399.6	397.2	396.8	0.7	0.7	-58.75	27.3	26.1	31.4	30.0	1.37	22.957					
500.0	498.8	495.5	494.4	1.0	1.0	-66.05	33.6	37.0	36.1	34.2	1.86	19.381					
600.0	597.1	593.6	590.8	1.4	1.3	-73.38	42.4	52.3	43.4	40.9	2.52	17.212					
700.0	694.3	691.3	685.9	1.8	1.8	-79.65	53.5	71.7	53.4	50.1	3.37	15.849					
800.0	790.2	788.6	779.3	2.4	2.3	-84.57	67.1	95.3	66.3	61.9	4.42	15.001					
900.0	884.4	885.3	870.7	3.0	2.9	-88.25	82.8	122.7	81.8	76.1	5.65	14.474					
1,000.0	976.8	981.5	959.9	3.8	3.6	-90.95	100.7	154.0	99.8	92.8	7.06	14.136	SF				

Anticollision Report

Company:	EnCana Oil & Gas (USA) Inc	Local Co-ordinate Reference:	Well NP MF14C-3 O04 696 (was 14D-3)
Project:	North Piceance	TVD Reference:	WELL @ 6044.0ft (Original Well Elev)
Reference Site:	O04 696 (3rd)	MD Reference:	WELL @ 6044.0ft (Original Well Elev)
Site Error:	0.0ft	North Reference:	True
Reference Well:	NP MF14C-3 O04 696 (was 14D-3)	Survey Calculation Method:	Minimum Curvature
Well Error:	0.0ft	Output errors are at	2.00 sigma
Reference Wellbore	DD	Database:	USA EDM 5000 US Multi Users DB
Reference Design:	Plan #2	Offset TVD Reference:	Offset Datum

Offset Design O04 696 (3rd) - NP MF11E-3 O04 696 (was 13A-3) - DD - Plan #2												Offset Site Error:	0.0 ft
Survey Program: 0-MWD												Offset Well Error:	0.0 ft
Reference		Offset		Semi Major Axis			Distance						Warning
Measured Depth (ft)	Vertical Depth (ft)	Measured Depth (ft)	Vertical Depth (ft)	Reference (ft)	Offset (ft)	Highside Toolface (°)	Offset Wellbore Centre +N/-S (ft)	+E/-W (ft)	Between Centres (ft)	Between Ellipses (ft)	Total Uncertainty Axis	Separation Factor	
0.0	0.0	0.0	0.0	0.0	0.0	-8.01	11.1	-1.6	11.2				
100.0	100.0	100.0	100.0	0.1	0.1	-8.01	11.1	-1.6	11.2	11.0	0.27	41.280	
200.0	200.0	200.0	200.0	0.3	0.3	-8.01	11.1	-1.6	11.2	10.6	0.62	18.089 CC, ES	
300.0	300.0	299.8	299.8	0.5	0.5	-97.39	12.2	0.8	12.3	11.3	0.99	12.485	
400.0	399.6	399.6	399.2	0.7	0.7	-98.29	15.5	7.9	15.5	14.1	1.42	10.918	
500.0	498.8	499.2	498.0	1.0	1.0	-99.14	21.0	19.7	20.9	18.9	1.98	10.546	
600.0	597.1	598.6	595.7	1.4	1.4	-99.74	28.6	36.0	28.4	25.7	2.70	10.535 SF	
700.0	694.3	697.7	692.1	1.8	1.8	-100.09	38.2	56.9	38.0	34.4	3.58	10.610	
800.0	790.2	796.6	786.9	2.4	2.3	-100.27	50.0	82.3	49.7	45.0	4.65	10.689	
900.0	884.4	895.0	879.8	3.0	3.0	-100.30	63.7	111.9	63.4	57.5	5.90	10.747	
1,000.0	976.8	993.0	970.4	3.8	3.7	-100.24	79.4	145.7	79.0	71.7	7.33	10.782	
1,100.0	1,067.1	1,090.6	1,058.6	4.6	4.5	-100.11	96.9	183.4	96.7	87.7	8.95	10.797	

Anticollision Report

Company:	EnCana Oil & Gas (USA) Inc	Local Co-ordinate Reference:	Well NP MF14C-3 O04 696 (was 14D-3)
Project:	North Piceance	TVD Reference:	WELL @ 6044.0ft (Original Well Elev)
Reference Site:	O04 696 (3rd)	MD Reference:	WELL @ 6044.0ft (Original Well Elev)
Site Error:	0.0ft	North Reference:	True
Reference Well:	NP MF14C-3 O04 696 (was 14D-3)	Survey Calculation Method:	Minimum Curvature
Well Error:	0.0ft	Output errors are at	2.00 sigma
Reference Wellbore	DD	Database:	USA EDM 5000 US Multi Users DB
Reference Design:	Plan #2	Offset TVD Reference:	Offset Datum

Offset Design O04 696 (3rd) - NP MF11G-3 O04 696 (was 14C-3) - DD - Plan #2												Offset Site Error:	0.0 ft
Survey Program: 0-MWD												Offset Well Error:	0.0 ft
Reference		Offset		Semi Major Axis			Distance						Warning
Measured Depth (ft)	Vertical Depth (ft)	Measured Depth (ft)	Vertical Depth (ft)	Reference (ft)	Offset (ft)	Highside Toolface (°)	Offset Wellbore Centre +N/-S (ft)	+E/-W (ft)	Between Centres (ft)	Between Ellipses (ft)	Total Uncertainty Axis	Separation Factor	
0.0	0.0	0.0	0.0	0.0	0.0	-51.08	5.1	-6.3	8.1				
100.0	100.0	100.0	100.0	0.1	0.1	-51.08	5.1	-6.3	8.1	7.8	0.27	29.579	
200.0	200.0	200.0	200.0	0.3	0.3	-51.08	5.1	-6.3	8.1	7.4	0.62	12.962 CC, ES	
300.0	300.0	300.0	300.0	0.5	0.5	-149.49	5.1	-6.3	10.2	9.2	0.97	10.494	
400.0	399.6	400.3	400.3	0.7	0.7	-157.70	5.7	-3.7	15.2	13.9	1.33	11.466	
500.0	498.8	501.0	500.6	1.0	0.9	-158.77	7.6	4.0	20.9	19.2	1.70	12.286	
600.0	597.1	601.8	600.5	1.4	1.2	-157.07	10.8	16.8	27.1	25.0	2.12	12.781	
700.0	694.3	702.8	699.9	1.8	1.5	-154.19	15.3	34.8	33.9	31.3	2.63	12.881	
800.0	790.2	804.1	798.2	2.4	2.0	-150.84	21.1	57.9	41.3	38.0	3.28	12.588	
900.0	884.4	905.4	895.3	3.0	2.5	-147.35	28.2	86.0	49.5	45.4	4.13	12.001	
1,000.0	976.8	1,007.0	990.9	3.8	3.2	-143.91	36.5	119.2	58.5	53.3	5.19	11.267	
1,100.0	1,067.1	1,108.6	1,084.6	4.6	3.9	-140.61	46.0	157.3	68.4	61.9	6.51	10.512	
1,200.0	1,155.7	1,210.4	1,176.3	5.5	4.8	-136.86	56.8	200.2	78.0	69.9	8.10	9.625	
1,300.0	1,244.2	1,311.6	1,265.0	6.4	5.7	-131.09	68.6	247.5	85.3	75.2	10.13	8.422	
1,400.0	1,332.8	1,411.0	1,351.3	7.3	6.7	-125.42	80.6	295.3	92.6	80.3	12.27	7.548 SF	

Anticollision Report

Company:	EnCana Oil & Gas (USA) Inc	Local Co-ordinate Reference:	Well NP MF14C-3 O04 696 (was 14D-3)
Project:	North Piceance	TVD Reference:	WELL @ 6044.0ft (Original Well Elev)
Reference Site:	O04 696 (3rd)	MD Reference:	WELL @ 6044.0ft (Original Well Elev)
Site Error:	0.0ft	North Reference:	True
Reference Well:	NP MF14C-3 O04 696 (was 14D-3)	Survey Calculation Method:	Minimum Curvature
Well Error:	0.0ft	Output errors are at	2.00 sigma
Reference Wellbore	DD	Database:	USA EDM 5000 US Multi Users DB
Reference Design:	Plan #2	Offset TVD Reference:	Offset Datum

Offset Design											O04 696 (3rd) - NP MF14A-3 O04 696 (was 13B-3) - DD - Plan #2			Offset Site Error:		0.0 ft
Survey Program: 0-MWD											Offset Well Error:		0.0 ft			
Reference		Offset		Semi Major Axis			Distance							Warning		
Measured Depth (ft)	Vertical Depth (ft)	Measured Depth (ft)	Vertical Depth (ft)	Reference (ft)	Offset (ft)	Highside Toolface (°)	Offset Wellbore Centre +N/-S (ft)	+E/-W (ft)	Between Centres (ft)	Between Ellipses (ft)	Total Uncertainty Axis	Separation Factor				
0.0	0.0	0.0	0.0	0.0	0.0	37.75	6.1	4.7	7.7							
100.0	100.0	100.0	100.0	0.1	0.1	37.75	6.1	4.7	7.7	7.4	0.27	28.197				
200.0	200.0	200.0	200.0	0.3	0.3	37.75	6.1	4.7	7.7	7.1	0.62	12.356 CC				
300.0	300.0	299.7	299.7	0.5	0.5	-53.18	6.5	7.3	8.0	7.0	0.98	8.133 ES				
400.0	399.6	399.4	399.0	0.7	0.7	-58.29	7.8	15.0	8.9	7.5	1.39	6.385				
500.0	498.8	499.1	497.9	1.0	1.0	-64.73	10.0	27.7	10.5	8.6	1.92	5.476				
600.0	597.1	598.7	595.8	1.4	1.4	-70.88	13.1	45.6	13.0	10.3	2.62	4.936				
700.0	694.3	698.3	692.7	1.8	1.8	-75.96	17.0	68.4	16.2	12.7	3.53	4.600				
800.0	790.2	797.9	788.2	2.4	2.4	-79.88	21.7	96.2	20.3	15.7	4.63	4.387				
900.0	884.4	897.5	882.1	3.0	3.0	-82.81	27.3	128.8	25.2	19.3	5.93	4.247				
1,000.0	976.8	996.9	974.0	3.8	3.8	-85.00	33.7	166.2	30.9	23.4	7.44	4.149				
1,100.0	1,067.1	1,096.4	1,063.8	4.6	4.6	-86.63	40.9	208.3	37.3	28.1	9.14	4.076				
1,200.0	1,155.7	1,195.7	1,151.2	5.5	5.5	-86.00	48.9	254.8	44.5	33.5	10.94	4.065 SF				
1,300.0	1,244.2	1,294.7	1,235.8	6.4	6.6	-80.35	57.5	305.5	52.9	40.3	12.62	4.195				
1,400.0	1,332.8	1,394.1	1,319.8	7.3	7.6	-74.81	66.5	357.8	62.4	48.3	14.14	4.417				
1,500.0	1,421.4	1,493.5	1,403.9	8.2	8.7	-70.76	75.5	410.2	72.4	56.8	15.58	4.644				
1,600.0	1,509.9	1,592.9	1,487.9	9.1	9.7	-67.69	84.4	462.5	82.6	65.6	16.99	4.859				
1,700.0	1,598.5	1,692.3	1,571.9	10.0	10.8	-65.31	93.4	514.8	92.9	74.6	18.38	5.057				

Anticollision Report

Company:	EnCana Oil & Gas (USA) Inc	Local Co-ordinate Reference:	Well NP MF14C-3 O04 696 (was 14D-3)
Project:	North Piceance	TVD Reference:	WELL @ 6044.0ft (Original Well Elev)
Reference Site:	O04 696 (3rd)	MD Reference:	WELL @ 6044.0ft (Original Well Elev)
Site Error:	0.0ft	North Reference:	True
Reference Well:	NP MF14C-3 O04 696 (was 14D-3)	Survey Calculation Method:	Minimum Curvature
Well Error:	0.0ft	Output errors are at	2.00 sigma
Reference Wellbore	DD	Database:	USA EDM 5000 US Multi Users DB
Reference Design:	Plan #2	Offset TVD Reference:	Offset Datum

Offset Design O04 696 (3rd) - NP MF14D-3 O04 696 (was 19A-3) - DD - Plan #2													Offset Site Error:	0.0 ft
Survey Program: 0-MWD													Offset Well Error:	0.0 ft
Reference		Offset		Semi Major Axis			Distance				Total Uncertainty Axis	Separation Factor	Warning	
Measured Depth (ft)	Vertical Depth (ft)	Measured Depth (ft)	Vertical Depth (ft)	Reference (ft)	Offset (ft)	Highside Toolface (°)	Offset Wellbore Centre +N/-S (ft)	+E/-W (ft)	Between Centres (ft)	Between Ellipses (ft)				
0.0	0.0	0.0	0.0	0.0	0.0	-118.29	-10.1	-18.8	21.3					
100.0	100.0	100.0	100.0	0.1	0.1	-118.29	-10.1	-18.8	21.3	21.1	0.27	78.410		
200.0	200.0	200.0	200.0	0.3	0.3	-118.29	-10.1	-18.8	21.3	20.7	0.62	34.359 CC, ES		
300.0	300.0	300.0	300.0	0.5	0.5	155.62	-10.1	-18.8	23.7	22.7	0.97	24.410		
400.0	399.6	401.0	401.0	0.7	0.7	159.44	-10.3	-16.1	28.6	27.3	1.33	21.589		
500.0	498.8	502.4	502.0	1.0	0.9	161.23	-11.0	-8.1	33.8	32.1	1.69	19.973		
600.0	597.1	604.0	602.7	1.4	1.2	161.76	-12.1	5.3	39.1	37.0	2.08	18.821		
700.0	694.3	705.9	702.9	1.8	1.5	161.47	-13.7	24.0	44.5	42.0	2.50	17.824		
800.0	790.2	808.1	802.1	2.4	2.0	160.61	-15.7	48.1	50.0	47.0	2.97	16.822		
900.0	884.4	910.5	900.1	3.0	2.5	159.37	-18.1	77.6	55.6	52.0	3.53	15.738		
1,000.0	976.8	1,013.1	996.6	3.8	3.2	157.84	-21.0	112.3	61.3	57.1	4.21	14.557		
1,100.0	1,067.1	1,115.9	1,091.3	4.6	4.0	156.11	-24.4	152.3	67.1	62.1	5.04	13.309		
1,200.0	1,155.7	1,219.0	1,184.0	5.5	4.9	153.74	-28.1	197.3	71.7	65.5	6.11	11.722		
1,300.0	1,244.2	1,320.3	1,272.9	6.4	5.8	149.78	-32.1	245.7	72.7	65.1	7.56	9.618		
1,400.0	1,332.8	1,420.2	1,360.3	7.3	6.7	145.75	-36.1	293.8	73.7	64.5	9.21	7.998		
1,500.0	1,421.4	1,520.0	1,447.8	8.2	7.7	141.85	-40.1	341.8	75.0	64.0	11.03	6.801		
1,600.0	1,509.9	1,619.9	1,535.2	9.1	8.6	138.11	-44.1	389.9	76.7	63.7	12.98	5.910		
1,700.0	1,598.5	1,719.8	1,622.6	10.0	9.5	134.54	-48.1	438.0	78.7	63.7	15.03	5.239		
1,800.0	1,687.0	1,819.6	1,710.0	10.9	10.5	131.16	-52.1	486.1	81.0	63.9	17.14	4.726		
1,900.0	1,775.6	1,919.5	1,797.5	11.8	11.4	127.98	-56.1	534.2	83.6	64.3	19.30	4.330		
2,000.0	1,864.1	2,019.4	1,884.9	12.7	12.4	124.99	-60.1	582.3	86.4	64.9	21.48	4.021		
2,100.0	1,952.7	2,119.2	1,972.3	13.6	13.3	122.19	-64.1	630.4	89.4	65.7	23.67	3.776		
2,200.0	2,041.3	2,219.1	2,059.8	14.5	14.3	119.59	-68.1	678.4	92.6	66.7	25.86	3.581		
2,300.0	2,129.8	2,318.9	2,147.2	15.5	15.2	117.16	-72.1	726.5	96.0	68.0	28.04	3.423		
2,400.0	2,218.4	2,418.8	2,234.6	16.4	16.2	114.90	-76.1	774.6	99.5	69.3	30.20	3.296 SF		

Anticollision Report

Company:	EnCana Oil & Gas (USA) Inc	Local Co-ordinate Reference:	Well NP MF14C-3 O04 696 (was 14D-3)
Project:	North Piceance	TVD Reference:	WELL @ 6044.0ft (Original Well Elev)
Reference Site:	O04 696 (3rd)	MD Reference:	WELL @ 6044.0ft (Original Well Elev)
Site Error:	0.0ft	North Reference:	True
Reference Well:	NP MF14C-3 O04 696 (was 14D-3)	Survey Calculation Method:	Minimum Curvature
Well Error:	0.0ft	Output errors are at	2.00 sigma
Reference Wellbore	DD	Database:	USA EDM 5000 US Multi Users DB
Reference Design:	Plan #2	Offset TVD Reference:	Offset Datum

Offset Design O04 696 (3rd) - NP MF14E-3 O04 696 (was 19B-3) - DD - Plan #2												Offset Site Error:	0.0 ft
Survey Program: 0-MWD												Offset Well Error:	0.0 ft
Reference		Offset		Semi Major Axis		Distance							
Measured Depth (ft)	Vertical Depth (ft)	Measured Depth (ft)	Vertical Depth (ft)	Reference (ft)	Offset (ft)	Highside Toolface (°)	Offset Wellbore Centre +N/-S (ft)	+E/-W (ft)	Between Centres (ft)	Between Ellipses (ft)	Total Uncertainty Axis	Separation Factor	Warning
0.0	0.0	0.0	0.0	0.0	0.0	-140.45	-15.2	-12.5	19.7				
100.0	100.0	100.0	100.0	0.1	0.1	-140.45	-15.2	-12.5	19.7	19.4	0.27	72.290	
200.0	200.0	200.0	200.0	0.3	0.3	-140.45	-15.2	-12.5	19.7	19.1	0.62	31.678 CC, ES	
300.0	300.0	300.4	300.4	0.5	0.5	129.42	-15.9	-10.0	20.3	19.3	0.98	20.650	
400.0	399.6	400.8	400.4	0.7	0.7	126.32	-17.9	-2.4	22.2	20.8	1.41	15.810	
500.0	498.8	501.1	499.9	1.0	1.0	122.20	-21.4	10.3	25.5	23.6	1.95	13.116	
600.0	597.1	601.3	598.4	1.4	1.4	117.95	-26.2	28.0	30.3	27.6	2.65	11.424	
700.0	694.3	701.4	695.7	1.8	1.8	114.13	-32.3	50.6	36.5	33.0	3.54	10.308	
800.0	790.2	801.4	791.5	2.4	2.4	110.91	-39.8	78.1	44.3	39.6	4.63	9.554	
900.0	884.4	901.1	885.5	3.0	3.0	108.28	-48.5	110.3	53.5	47.6	5.92	9.031	
1,000.0	976.8	1,000.6	977.4	3.8	3.8	106.16	-58.5	147.1	64.1	56.7	7.41	8.656	
1,100.0	1,067.1	1,099.9	1,067.0	4.6	4.6	104.42	-69.7	188.3	76.2	67.1	9.09	8.375	
1,200.0	1,155.7	1,199.0	1,154.3	5.5	5.5	102.59	-82.0	233.5	89.2	78.3	10.88	8.194 SF	

Anticollision Report

Company:	EnCana Oil & Gas (USA) Inc	Local Co-ordinate Reference:	Well NP MF14C-3 O04 696 (was 14D-3)
Project:	North Piceance	TVD Reference:	WELL @ 6044.0ft (Original Well Elev)
Reference Site:	O04 696 (3rd)	MD Reference:	WELL @ 6044.0ft (Original Well Elev)
Site Error:	0.0ft	North Reference:	True
Reference Well:	NP MF14C-3 O04 696 (was 14D-3)	Survey Calculation Method:	Minimum Curvature
Well Error:	0.0ft	Output errors are at	2.00 sigma
Reference Wellbore	DD	Database:	USA EDM 5000 US Multi Users DB
Reference Design:	Plan #2	Offset TVD Reference:	Offset Datum

Offset Design O04 696 (3rd) - NP MF15A-4 O04 696 (was 11D-3) - DD - Plan #2													Offset Site Error:	0.0 ft
Survey Program: 0-MWD													Offset Well Error:	0.0 ft
Reference		Offset		Semi Major Axis			Distance						Warning	
Measured Depth (ft)	Vertical Depth (ft)	Measured Depth (ft)	Vertical Depth (ft)	Reference (ft)	Offset (ft)	Highside Toolface (°)	Offset Wellbore Centre +N/-S (ft)	+E/-W (ft)	Between Centres (ft)	Between Ellipses (ft)	Total Uncertainty Axis	Separation Factor		
0.0	0.0	0.0	0.0	0.0	0.0	21.87	27.3	11.0	29.4					
100.0	100.0	100.0	100.0	0.1	0.1	21.87	27.3	11.0	29.4	29.2	0.27	108.117		
200.0	200.0	200.0	200.0	0.3	0.3	21.87	27.3	11.0	29.4	28.8	0.62	47.377 CC, ES		
300.0	300.0	298.6	298.6	0.5	0.5	-74.43	29.8	10.3	30.7	29.7	0.98	31.400		
400.0	399.6	396.3	395.9	0.7	0.7	-91.91	37.0	8.2	37.1	35.7	1.37	27.039 SF		
500.0	498.8	492.0	490.8	1.0	1.0	-108.63	48.7	4.8	52.4	50.6	1.80	29.061		
600.0	597.1	584.8	582.2	1.4	1.3	-119.45	64.4	0.2	77.4	75.2	2.28	33.912		

Anticollision Report

Company:	EnCana Oil & Gas (USA) Inc	Local Co-ordinate Reference:	Well NP MF14C-3 O04 696 (was 14D-3)
Project:	North Piceance	TVD Reference:	WELL @ 6044.0ft (Original Well Elev)
Reference Site:	O04 696 (3rd)	MD Reference:	WELL @ 6044.0ft (Original Well Elev)
Site Error:	0.0ft	North Reference:	True
Reference Well:	NP MF14C-3 O04 696 (was 14D-3)	Survey Calculation Method:	Minimum Curvature
Well Error:	0.0ft	Output errors are at	2.00 sigma
Reference Wellbore	DD	Database:	USA EDM 5000 US Multi Users DB
Reference Design:	Plan #2	Offset TVD Reference:	Offset Datum

Offset Design O04 696 (3rd) - NP MF15D-4 O04 696 (was 01B-9) - DD - Plan #2													Offset Site Error: 0.0 ft
Survey Program: 0-MWD													Offset Well Error: 0.0 ft
Reference		Offset		Semi Major Axis			Distance						Warning
Measured Depth (ft)	Vertical Depth (ft)	Measured Depth (ft)	Vertical Depth (ft)	Reference (ft)	Offset (ft)	Highside Toolface (°)	Offset Wellbore Centre +N/-S (ft)	+E/-W (ft)	Between Centres (ft)	Between Ellipses (ft)	Total Uncertainty Axis	Separation Factor	
0.0	0.0	0.0	0.0	0.0	0.0	-135.73	-54.6	-53.3	76.3				
100.0	100.0	100.0	100.0	0.1	0.1	-135.73	-54.6	-53.3	76.3	76.0	0.27	280.247	
200.0	200.0	200.0	200.0	0.3	0.3	-135.73	-54.6	-53.3	76.3	75.7	0.62	122.805 CC, ES	
300.0	300.0	300.0	300.0	0.5	0.5	136.62	-54.6	-53.3	78.2	77.2	0.97	80.276	
400.0	399.6	397.9	397.9	0.7	0.7	141.00	-54.3	-54.9	85.1	83.8	1.34	63.623	
500.0	498.8	494.5	494.3	1.0	0.8	147.70	-53.2	-59.7	99.1	97.4	1.71	57.919 SF	

Anticollision Report

Company:	EnCana Oil & Gas (USA) Inc	Local Co-ordinate Reference:	Well NP MF14C-3 O04 696 (was 14D-3)
Project:	North Piceance	TVD Reference:	WELL @ 6044.0ft (Original Well Elev)
Reference Site:	O04 696 (3rd)	MD Reference:	WELL @ 6044.0ft (Original Well Elev)
Site Error:	0.0ft	North Reference:	True
Reference Well:	NP MF14C-3 O04 696 (was 14D-3)	Survey Calculation Method:	Minimum Curvature
Well Error:	0.0ft	Output errors are at	2.00 sigma
Reference Wellbore	DD	Database:	USA EDM 5000 US Multi Users DB
Reference Design:	Plan #2	Offset TVD Reference:	Offset Datum

Offset Design O04 696 (3rd) - NP MF18B-4 O04 696 (was 01A-9) - DD - Plan #2													Offset Site Error: 0.0 ft
Survey Program: 0-MWD													Offset Well Error: 0.0 ft
Reference		Offset		Semi Major Axis		Distance							
Measured Depth (ft)	Vertical Depth (ft)	Measured Depth (ft)	Vertical Depth (ft)	Reference (ft)	Offset (ft)	Highside Toolface (°)	Offset Wellbore Centre +N/-S (ft)	+E/-W (ft)	Between Centres (ft)	Between Ellipses (ft)	Total Uncertainty Axis	Separation Factor	Warning
0.0	0.0	0.0	0.0	0.0	0.0	-141.83	-65.8	-51.7	83.7				
100.0	100.0	100.0	100.0	0.1	0.1	-141.83	-65.8	-51.7	83.7	83.4	0.27	307.241	
200.0	200.0	200.0	200.0	0.3	0.3	-141.83	-65.8	-51.7	83.7	83.0	0.62	134.634 CC, ES	
300.0	300.0	296.5	296.4	0.5	0.5	129.45	-68.2	-51.8	87.3	86.4	0.97	89.845	
400.0	399.6	392.2	391.8	0.7	0.7	130.05	-75.4	-51.9	98.3	97.0	1.36	72.532 SF	

Anticollision Report

Company:	EnCana Oil & Gas (USA) Inc	Local Co-ordinate Reference:	Well NP MF14C-3 O04 696 (was 14D-3)
Project:	North Piceance	TVD Reference:	WELL @ 6044.0ft (Original Well Elev)
Reference Site:	O04 696 (3rd)	MD Reference:	WELL @ 6044.0ft (Original Well Elev)
Site Error:	0.0ft	North Reference:	True
Reference Well:	NP MF14C-3 O04 696 (was 14D-3)	Survey Calculation Method:	Minimum Curvature
Well Error:	0.0ft	Output errors are at	2.00 sigma
Reference Wellbore	DD	Database:	USA EDM 5000 US Multi Users DB
Reference Design:	Plan #2	Offset TVD Reference:	Offset Datum

Offset Design O04 696 (3rd) - NP MF19A-3 O04 696 (was 17B-4) - DD - Plan #2													Offset Site Error:	0.0 ft	
Survey Program: 0-MWD														Offset Well Error:	0.0 ft
Reference		Offset		Semi Major Axis			Distance							Warning	
Measured Depth	Vertical Depth	Measured Depth	Vertical Depth	Reference	Offset	Highside Toolface	Offset Wellbore Centre		Between Centres	Between Ellipses	Total Uncertainty	Separation			
(ft)	(ft)	(ft)	(ft)	(ft)	(ft)	(°)	+N/-S (ft)	+E/-W (ft)	(ft)	(ft)	Axis	Factor			
0.0	0.0	0.0	0.0	0.0	0.0	-126.20	-17.2	-23.5	29.1						
100.0	100.0	100.0	100.0	0.1	0.1	-126.20	-17.2	-23.5	29.1	28.8	0.27	106.956			
200.0	200.0	200.0	200.0	0.3	0.3	-126.20	-17.2	-23.5	29.1	28.5	0.62	46.868	CC, ES		
300.0	300.0	300.4	300.4	0.5	0.5	146.56	-17.5	-22.9	30.9	30.0	0.97	31.776			
400.0	399.6	401.3	401.1	0.7	0.7	146.31	-19.5	-18.0	34.6	33.3	1.35	25.643			
500.0	498.8	502.1	501.4	1.0	0.9	143.82	-23.7	-8.2	39.9	38.1	1.80	22.222			
600.0	597.1	602.9	600.9	1.4	1.2	140.11	-29.8	6.5	46.9	44.5	2.36	19.834			
700.0	694.3	703.6	699.4	1.8	1.7	135.96	-38.0	25.9	55.7	52.6	3.10	17.946			
800.0	790.2	804.1	796.3	2.4	2.2	131.89	-48.2	50.0	66.5	62.4	4.05	16.428			
900.0	884.4	904.3	891.5	3.0	2.7	128.14	-60.3	78.7	79.3	74.1	5.20	15.239			
1,000.0	976.8	1,004.1	984.7	3.8	3.4	124.80	-74.3	111.9	94.2	87.6	6.58	14.324	SF		

Anticollision Report

Company:	EnCana Oil & Gas (USA) Inc	Local Co-ordinate Reference:	Well NP MF14C-3 O04 696 (was 14D-3)
Project:	North Piceance	TVD Reference:	WELL @ 6044.0ft (Original Well Elev)
Reference Site:	O04 696 (3rd)	MD Reference:	WELL @ 6044.0ft (Original Well Elev)
Site Error:	0.0ft	North Reference:	True
Reference Well:	NP MF14C-3 O04 696 (was 14D-3)	Survey Calculation Method:	Minimum Curvature
Well Error:	0.0ft	Output errors are at	2.00 sigma
Reference Wellbore	DD	Database:	USA EDM 5000 US Multi Users DB
Reference Design:	Plan #2	Offset TVD Reference:	Offset Datum

Offset Design													Offset Site Error:		0.0 ft
Survey Program: 0-MWD													Offset Well Error:		0.0 ft
Reference		Offset		Semi Major Axis			Distance							Warning	
Measured Depth (ft)	Vertical Depth (ft)	Measured Depth (ft)	Vertical Depth (ft)	Reference (ft)	Offset (ft)	Highside Toolface (°)	Offset Wellbore Centre +N/-S (ft)	+E/-W (ft)	Between Centres (ft)	Between Ellipses (ft)	Total Uncertainty Axis	Separation Factor			
0.0	0.0	0.0	0.0	0.0	0.0	-142.25	-22.3	-17.2	28.2						
100.0	100.0	100.0	100.0	0.1	0.1	-142.25	-22.3	-17.2	28.2	27.9	0.27	103.390			
200.0	200.0	200.0	200.0	0.3	0.3	-142.25	-22.3	-17.2	28.2	27.5	0.62	45.306	CC, ES		
300.0	300.0	300.2	300.1	0.5	0.5	127.67	-23.6	-15.0	29.5	28.5	0.98	29.931			
400.0	399.6	400.2	399.8	0.7	0.7	124.82	-27.6	-8.2	33.4	32.0	1.41	23.701			
500.0	498.8	500.0	498.8	1.0	1.0	121.33	-34.2	3.1	40.2	38.2	1.95	20.570			
600.0	597.1	599.5	596.6	1.4	1.4	118.02	-43.3	18.7	49.8	47.1	2.65	18.780			
700.0	694.3	698.5	692.8	1.8	1.8	115.20	-55.0	38.6	62.1	58.6	3.52	17.675			
800.0	790.2	796.9	787.2	2.4	2.3	112.92	-69.1	62.6	77.3	72.7	4.56	16.956			
900.0	884.4	894.7	879.4	3.0	3.0	111.08	-85.5	90.5	95.1	89.4	5.78	16.466	SF		

Anticollision Report

Company:	EnCana Oil & Gas (USA) Inc	Local Co-ordinate Reference:	Well NP MF14C-3 O04 696 (was 14D-3)
Project:	North Piceance	TVD Reference:	WELL @ 6044.0ft (Original Well Elev)
Reference Site:	O04 696 (3rd)	MD Reference:	WELL @ 6044.0ft (Original Well Elev)
Site Error:	0.0ft	North Reference:	True
Reference Well:	NP MF14C-3 O04 696 (was 14D-3)	Survey Calculation Method:	Minimum Curvature
Well Error:	0.0ft	Output errors are at	2.00 sigma
Reference Wellbore	DD	Database:	USA EDM 5000 US Multi Users DB
Reference Design:	Plan #2	Offset TVD Reference:	Offset Datum

Offset Design												004 696 (3rd) - NP MF19D-3 004 696 (was 19C-3) - DD - Plan #2		Offset Site Error:		0.0 ft	
Survey Program: 0-MWD												Offset Well Error:		0.0 ft			
Reference		Offset		Semi Major Axis			Distance										
Measured Depth (ft)	Vertical Depth (ft)	Measured Depth (ft)	Vertical Depth (ft)	Reference (ft)	Offset (ft)	Highside Toolface (°)	Offset Wellbore Centre +N/-S (ft)	+E/-W (ft)	Between Centres (ft)	Between Ellipses (ft)	Total Uncertainty Axis	Separation Factor	Warning				
0.0	0.0	0.0	0.0	0.0	0.0	-131.94	-32.4	-36.0	48.4								
100.0	100.0	100.0	100.0	0.1	0.1	-131.94	-32.4	-36.0	48.4	48.2	0.27	177.914					
200.0	200.0	200.0	200.0	0.3	0.3	-131.94	-32.4	-36.0	48.4	47.8	0.62	77.963	CC, ES				
300.0	300.0	300.0	300.0	0.5	0.5	141.01	-32.4	-36.0	50.4	49.5	0.97	51.835					
400.0	399.6	399.9	399.9	0.7	0.7	145.26	-32.8	-35.6	56.6	55.3	1.34	42.405					
500.0	498.8	500.1	500.0	1.0	0.8	147.11	-36.4	-31.7	66.4	64.7	1.73	38.415					
600.0	597.1	600.3	599.6	1.4	1.1	146.71	-43.5	-24.0	79.3	77.1	2.19	36.260					
700.0	694.3	700.9	699.0	1.8	1.4	145.10	-53.7	-12.1	94.8	92.0	2.76	34.287	SF				

Anticollision Report

Company:	EnCana Oil & Gas (USA) Inc	Local Co-ordinate Reference:	Well NP MF14C-3 O04 696 (was 14D-3)
Project:	North Piceance	TVD Reference:	WELL @ 6044.0ft (Original Well Elev)
Reference Site:	O04 696 (3rd)	MD Reference:	WELL @ 6044.0ft (Original Well Elev)
Site Error:	0.0ft	North Reference:	True
Reference Well:	NP MF14C-3 O04 696 (was 14D-3)	Survey Calculation Method:	Minimum Curvature
Well Error:	0.0ft	Output errors are at	2.00 sigma
Reference Wellbore	DD	Database:	USA EDM 5000 US Multi Users DB
Reference Design:	Plan #2	Offset TVD Reference:	Offset Datum

Offset Design O04 696 (3rd) - NP MF19E-3 O04 696 (was 19D-3) - DD - Plan #2													Offset Site Error: 0.0 ft
Survey Program: 0-MWD													Offset Well Error: 0.0 ft
Reference		Offset		Semi Major Axis			Distance						Warning
Measured Depth (ft)	Vertical Depth (ft)	Measured Depth (ft)	Vertical Depth (ft)	Reference (ft)	Offset (ft)	Highside Toolface (°)	Offset Wellbore Centre +N/-S (ft)	+E/-W (ft)	Between Centres (ft)	Between Ellipses (ft)	Total Uncertainty Axis	Separation Factor	
0.0	0.0	0.0	0.0	0.0	0.0	-141.51	-37.4	-29.8	47.8				
100.0	100.0	100.0	100.0	0.1	0.1	-141.51	-37.4	-29.8	47.8	47.6	0.27	175.659	
200.0	200.0	200.0	200.0	0.3	0.3	-141.51	-37.4	-29.8	47.8	47.2	0.62	76.974 CC, ES	
300.0	300.0	300.0	300.0	0.5	0.5	128.80	-39.0	-27.7	49.4	48.5	0.98	50.249	
400.0	399.6	399.9	399.5	0.7	0.7	126.86	-43.8	-21.4	54.3	52.9	1.41	38.570	
500.0	498.8	499.4	498.1	1.0	1.0	124.28	-51.6	-11.1	62.5	60.6	1.94	32.180	
600.0	597.1	598.4	595.5	1.4	1.4	121.61	-62.5	3.2	74.1	71.5	2.62	28.259	
700.0	694.3	696.7	691.1	1.8	1.8	119.14	-76.3	21.4	89.0	85.6	3.46	25.708 SF	

Anticollision Report

Company:	EnCana Oil & Gas (USA) Inc	Local Co-ordinate Reference:	Well NP MF14C-3 O04 696 (was 14D-3)
Project:	North Piceance	TVD Reference:	WELL @ 6044.0ft (Original Well Elev)
Reference Site:	O04 696 (3rd)	MD Reference:	WELL @ 6044.0ft (Original Well Elev)
Site Error:	0.0ft	North Reference:	True
Reference Well:	NP MF14C-3 O04 696 (was 14D-3)	Survey Calculation Method:	Minimum Curvature
Well Error:	0.0ft	Output errors are at	2.00 sigma
Reference Wellbore	DD	Database:	USA EDM 5000 US Multi Users DB
Reference Design:	Plan #2	Offset TVD Reference:	Offset Datum

Offset Design O04 696 (3rd) - NP MF20F-3 O04 696 (was 20D-3) - DD - Plan #2													Offset Site Error: 0.0 ft
Survey Program: 0-MWD													Offset Well Error: 0.0 ft
Reference		Offset		Semi Major Axis		Distance							
Measured Depth (ft)	Vertical Depth (ft)	Measured Depth (ft)	Vertical Depth (ft)	Reference (ft)	Offset (ft)	Highside Toolface (°)	Offset Wellbore Centre +N/-S (ft)	+E/-W (ft)	Between Centres (ft)	Between Ellipses (ft)	Total Uncertainty Axis	Separation Factor	Warning
0.0	0.0	0.0	0.0	0.0	0.0	-141.62	-43.5	-34.5	55.5				
100.0	100.0	100.0	100.0	0.1	0.1	-141.62	-43.5	-34.5	55.5	55.2	0.27	203.855	
200.0	200.0	200.0	200.0	0.3	0.3	-141.62	-43.5	-34.5	55.5	54.9	0.62	89.330 CC, ES	
300.0	300.0	299.5	299.4	0.5	0.5	128.84	-45.4	-32.7	57.6	56.6	0.98	58.607	
400.0	399.6	398.7	398.3	0.7	0.7	127.28	-51.1	-27.5	63.9	62.5	1.40	45.521	
500.0	498.8	497.4	496.2	1.0	1.0	125.25	-60.6	-18.9	74.3	72.4	1.93	38.606	
600.0	597.1	595.2	592.4	1.4	1.3	123.17	-73.6	-7.0	89.1	86.5	2.58	34.503 SF	

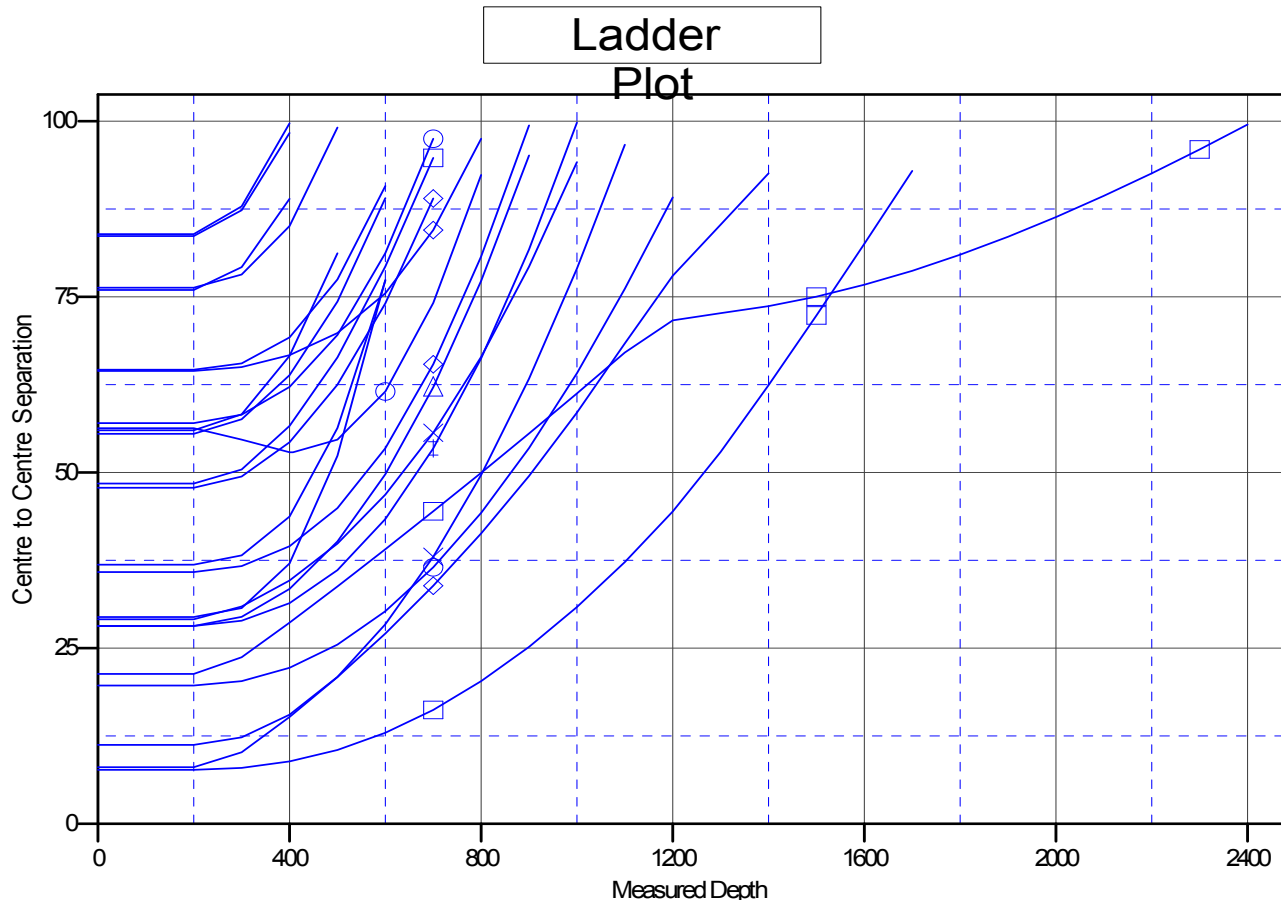
Anticollision Report

Company: EnCana Oil & Gas (USA) Inc
Project: North Piceance
Reference Site: O04 696 (3rd)
Site Error: 0.0ft
Reference Well: NP MF14C-3 O04 696 (was 14D-3)
Well Error: 0.0ft
Reference Wellbore DD
Reference Design: Plan #2

Local Co-ordinate Reference: Well NP MF14C-3 O04 696 (was 14D-3)
TVD Reference: WELL @ 6044.0ft (Original Well Elev)
MD Reference: WELL @ 6044.0ft (Original Well Elev)
North Reference: True
Survey Calculation Method: Minimum Curvature
Output errors are at 2.00 sigma
Database: USA EDM 5000 US Multi Users DB
Offset TVD Reference: Offset Datum

Reference Depths are relative to WELL @ 6044.0ft (Original Well Elev)
 Offset Depths are relative to Offset Datum
 Central Meridian is 105° 30' 0.00 W °

Coordinates are relative to: NP MF14C-3 O04 696 (was 14D-3)
 Coordinate System is US State Plane 1983, Colorado Central Zone
 Grid Convergence at Surface is: -1.64°



LEGEND

- NP MF01D-9 O04 696 (was 17C-4), DD, Plan #2 V0
- NP MF02A-9 O04 696 (was 18C-4), DD, Plan #2 V0
- NP MF06A-3 O04 696 (was 11C-3), DD, Plan #2 V0
- NP MF06B-3 O04 696 (was 15A-4), DD, Plan #2 V0
- NP MF06C-3 O04 696 (was 09C-4), DD, Plan #2 V0
- NP MF06E-3 O04 696 (was 11B-3), DD, Plan #2 V0
- NP MF08B-9 O04 696 (was 01B-9), DD, Plan #2 V0
- NP MF11A-3 O04 696 (was 12C-3), DD, Plan #2 V0
- NP MF11B-3 O04 696 (was 14A-3), DD, Plan #2 V0
- NP MF11D-3 O04 696 (was 14B-3), DD, Plan #2 V0
- NP MF11E-3 O04 696 (was 13A-3), DD, Plan #2 V0
- NP MF11G-3 O04 696 (was 14C-3), DD, Plan #2 V0
- NP MF14A-3 O04 696 (was 13B-3), DD, Plan #2 V0
- NP MF14D-3 O04 696 (was 19A-3), DD, Plan #2 V0
- NP MF14E-3 O04 696 (was 19B-3), DD, Plan #2 V0
- NP MF15A-4 O04 696 (was 11D-3), DD, Plan #2 V0
- NP MF15D-4 O04 696 (was 01B-9), DD, Plan #2 V0
- NP MF18B-4 O04 696 (was 01A-9), DD, Plan #2 V0
- NP MF19A-3 O04 696 (was 17B-4), DD, Plan #2 V0
- NP MF19C-3 O04 696 (was 20B-3), DD, Plan #2 V0
- NP MF19D-3 O04 696 (was 19C-3), DD, Plan #2 V0
- NP MF19E-3 O04 696 (was 19D-3), DD, Plan #2 V0
- NP MF20F-3 O04 696 (was 20D-3), DD, Plan #2 V0