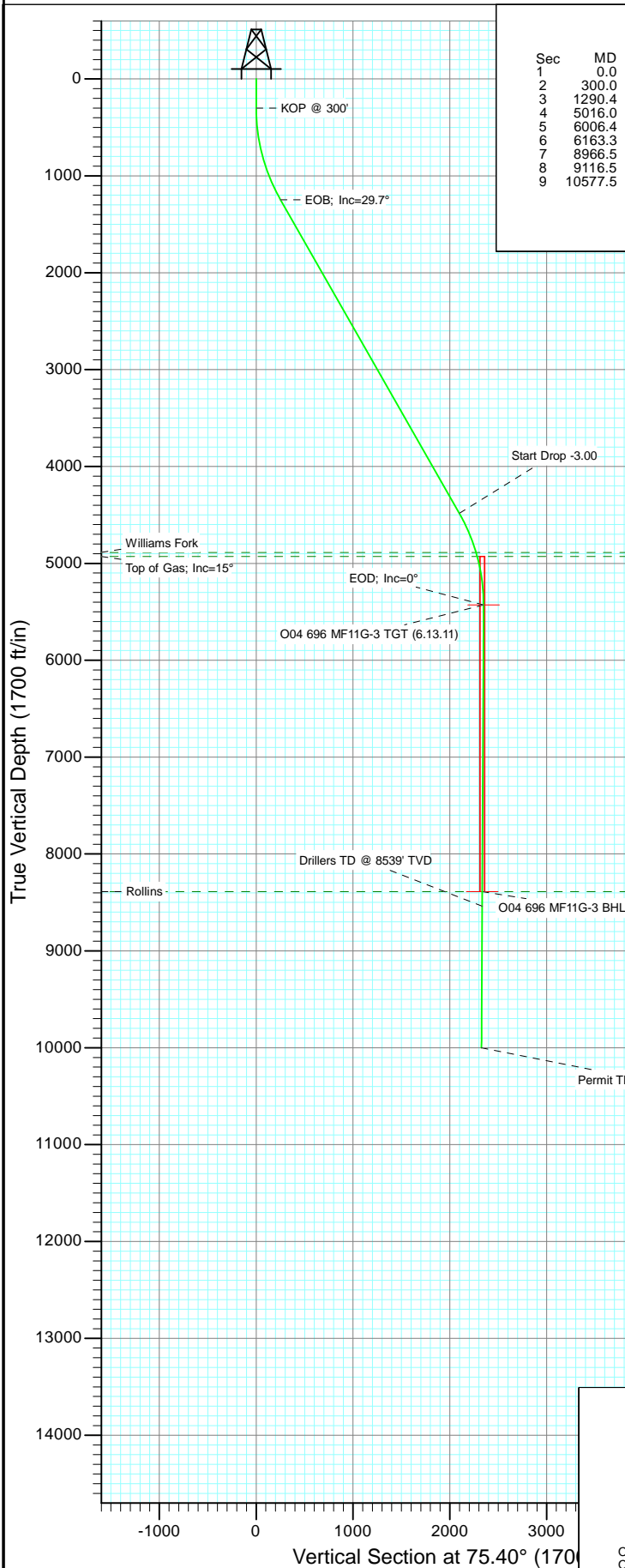
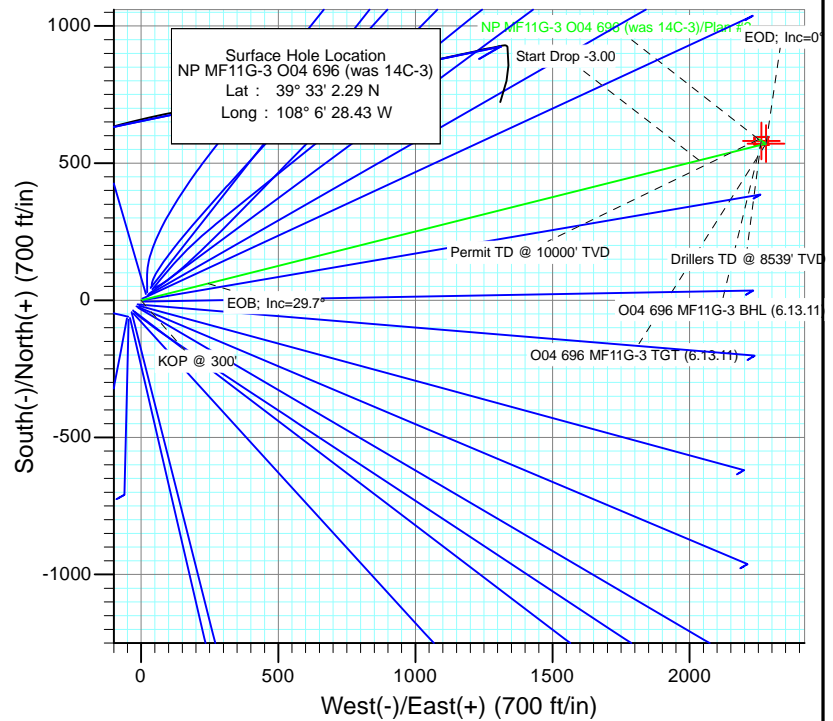




Project: North Piceance  
 Site: O04 696 (3rd)  
 Well: NP MF11G-3 O04 696 (was 14C-3)  
 Wellbore: DD  
 Design: Plan #2



SECTION DETAILS										
Sec	MD	Inc	Azi	TVD	+N/-S	+E/-W	Dleg	TFace	Vsect	Target
1	0.0	0.00	0.00	0.0	0.0	0.0	0.00	0.00	0.0	
2	300.0	0.00	0.00	300.0	0.0	0.0	0.00	0.00	0.0	
3	1290.4	29.71	75.93	1246.6	61.0	243.6	3.00	75.93	251.1	
4	5016.0	29.71	75.93	4482.4	509.9	2034.7	0.00	0.00	2097.6	O04 696 MF11G-3 TGT (6.13.11)
5	6006.4	0.00	0.00	5429.0	570.9	2278.3	3.00	180.00	2348.6	O04 696 MF11G-3 BHL (6.13.11)
6	6163.3	0.39	300.42	5585.9	571.2	2277.8	0.25	300.42	2348.3	
7	8966.5	0.39	300.42	8389.0	580.9	2261.3	0.00	0.00	2334.7	
8	9116.5	0.39	300.42	8539.0	581.4	2260.4	0.00	0.00	2334.0	
9	10577.5	0.39	300.42	10000.0	586.5	2251.8	0.00	0.00	2326.9	



Azimuths to True North  
 Magnetic North: 10.54°

Magnetic Field  
 Strength: 52365.1nT  
 Dip Angle: 65.79°  
 Date: 6/17/2010  
 Model: IGRF2010

#### FORMATION TOP DETAILS

TVDPath	MDPath	Formation
4889.0	5458.9	Williams Fork
4929.0	5500.5	Top of Gas; Inc=15°
8389.0	8966.5	Rollins

Type TD	Target No Target (Freehand)	Azimuth 75.40	Origin Type Slot	N/S 0.0	E/W 0.0	From TVD 0.0
Name	TVD	+N/-S	+E/-W	Latitude	Longitude	
O04 696 MF11G-3 TGT (6.13.11)	5429.0	570.9	2278.3	39° 33' 7.93 N	108° 5' 59.34 W	
O04 696 MF11G-3 BHL (6.13.11)	8389.0	580.9	2261.3	39° 33' 8.03 N	108° 5' 59.56 W	

Plan #2  
 NP MF11G-3 O04 696 (was 14C-3)  
 95xxx; LR  
 WELL @ 6044.0ft (Original Well Elev)  
 North American Datum 1983  
 Well NP MF11G-3 O04 696 (was 14C-3), True North

## Planning Report

<b>Database:</b>	USA EDM 5000 US Multi Users DB	<b>Local Co-ordinate Reference:</b>	Well NP MF11G-3 O04 696 (was 14C-3)
<b>Company:</b>	EnCana Oil & Gas (USA) Inc	<b>TVD Reference:</b>	WELL @ 6044.0ft (Original Well Elev)
<b>Project:</b>	North Piceance	<b>MD Reference:</b>	WELL @ 6044.0ft (Original Well Elev)
<b>Site:</b>	O04 696 (3rd)	<b>North Reference:</b>	True
<b>Well:</b>	NP MF11G-3 O04 696 (was 14C-3)	<b>Survey Calculation Method:</b>	Minimum Curvature
<b>Wellbore:</b>	DD		
<b>Design:</b>	Plan #2		

<b>Project</b>	North Piceance		
<b>Map System:</b>	US State Plane 1983	<b>System Datum:</b>	Mean Sea Level
<b>Geo Datum:</b>	North American Datum 1983		
<b>Map Zone:</b>	Colorado Central Zone		

<b>Site</b>	O04 696 (3rd)			
<b>Site Position:</b>		<b>Northing:</b>	1,635,941.08 ft	<b>Latitude:</b> 39° 33' 1.64 N
<b>From:</b>	Lat/Long	<b>Easting:</b>	2,264,673.43 ft	<b>Longitude:</b> 108° 6' 29.09 W
<b>Position Uncertainty:</b>	0.0 ft	<b>Slot Radius:</b>	13.200 in	<b>Grid Convergence:</b> -1.64 °

<b>Well</b>	NP MF11G-3 O04 696 (was 14C-3)			
<b>Well Position</b>	<b>+N/-S</b>	0.0 ft	<b>Northing:</b>	1,636,005.32 ft
	<b>+E/-W</b>	0.0 ft	<b>Easting:</b>	2,264,726.99 ft
<b>Position Uncertainty</b>		0.0 ft	<b>Wellhead Elevation:</b>	ft
			<b>Ground Level:</b>	6,022.0 ft

<b>Wellbore</b>	DD				
<b>Magnetics</b>	<b>Model Name</b>	<b>Sample Date</b>	<b>Declination (°)</b>	<b>Dip Angle (°)</b>	<b>Field Strength (nT)</b>
	IGRF2010	6/17/2010	10.54	65.79	52,365

<b>Design</b>	Plan #2			
<b>Audit Notes:</b>				
<b>Version:</b>	<b>Phase:</b>	PLAN	<b>Tie On Depth:</b>	0.0
<b>Vertical Section:</b>	<b>Depth From (TVD) (ft)</b>	<b>+N/-S (ft)</b>	<b>+E/-W (ft)</b>	<b>Direction (°)</b>
	0.0	0.0	0.0	75.40

<b>Plan Sections</b>										
Measured Depth (ft)	Inclination (°)	Azimuth (°)	Vertical Depth (ft)	+N/-S (ft)	+E/-W (ft)	Dogleg Rate (°/100ft)	Build Rate (°/100ft)	Turn Rate (°/100ft)	TFO (°)	Target
0.0	0.00	0.00	0.0	0.0	0.0	0.00	0.00	0.00	0.00	
300.0	0.00	0.00	300.0	0.0	0.0	0.00	0.00	0.00	0.00	
1,290.4	29.71	75.93	1,246.6	61.0	243.6	3.00	3.00	0.00	75.93	
5,016.0	29.71	75.93	4,482.4	509.9	2,034.7	0.00	0.00	0.00	0.00	
6,006.4	0.00	0.00	5,429.0	570.9	2,278.3	3.00	-3.00	0.00	180.00	O04 696 MF11G-3 TC
6,163.3	0.39	300.42	5,585.9	571.2	2,277.8	0.25	0.25	-37.97	300.42	
8,966.5	0.39	300.42	8,389.0	580.9	2,261.3	0.00	0.00	0.00	0.00	O04 696 MF11G-3 B+
9,116.5	0.39	300.42	8,539.0	581.4	2,260.4	0.00	0.00	0.00	0.00	
10,577.5	0.39	300.42	10,000.0	586.5	2,251.8	0.00	0.00	0.00	0.00	

# Planning Report

**Database:** USA EDM 5000 US Multi Users DB  
**Company:** EnCana Oil & Gas (USA) Inc  
**Project:** North Piceance  
**Site:** O04 696 (3rd)  
**Well:** NP MF11G-3 O04 696 (was 14C-3)  
**Wellbore:** DD  
**Design:** Plan #2

**Local Co-ordinate Reference:** Well NP MF11G-3 O04 696 (was 14C-3)  
**TVD Reference:** WELL @ 6044.0ft (Original Well Elev)  
**MD Reference:** WELL @ 6044.0ft (Original Well Elev)  
**North Reference:** True  
**Survey Calculation Method:** Minimum Curvature

## Planned Survey

Measured Depth (ft)	Inclination (°)	Azimuth (°)	Vertical Depth (ft)	+N/-S (ft)	+E/-W (ft)	Vertical Section (ft)	Dogleg Rate (°/100ft)	Build Rate (°/100ft)	Comments / Formations
0.0	0.00	0.00	0.0	0.0	0.0	0.0	0.00	0.00	
30.0	0.00	0.00	30.0	0.0	0.0	0.0	0.00	0.00	
60.0	0.00	0.00	60.0	0.0	0.0	0.0	0.00	0.00	
90.0	0.00	0.00	90.0	0.0	0.0	0.0	0.00	0.00	
120.0	0.00	0.00	120.0	0.0	0.0	0.0	0.00	0.00	
150.0	0.00	0.00	150.0	0.0	0.0	0.0	0.00	0.00	
180.0	0.00	0.00	180.0	0.0	0.0	0.0	0.00	0.00	
210.0	0.00	0.00	210.0	0.0	0.0	0.0	0.00	0.00	
240.0	0.00	0.00	240.0	0.0	0.0	0.0	0.00	0.00	
270.0	0.00	0.00	270.0	0.0	0.0	0.0	0.00	0.00	
300.0	0.00	0.00	300.0	0.0	0.0	0.0	0.00	0.00	KOP @ 300'
330.0	0.90	75.93	330.0	0.1	0.2	0.2	3.00	3.00	
360.0	1.80	75.93	360.0	0.2	0.9	0.9	3.00	3.00	
390.0	2.70	75.93	390.0	0.5	2.1	2.1	3.00	3.00	
420.0	3.60	75.93	419.9	0.9	3.7	3.8	3.00	3.00	
450.0	4.50	75.93	449.8	1.4	5.7	5.9	3.00	3.00	
480.0	5.40	75.93	479.7	2.1	8.2	8.5	3.00	3.00	
510.0	6.30	75.93	509.6	2.8	11.2	11.5	3.00	3.00	
540.0	7.20	75.93	539.4	3.7	14.6	15.1	3.00	3.00	
570.0	8.10	75.93	569.1	4.6	18.5	19.1	3.00	3.00	
600.0	9.00	75.93	598.8	5.7	22.8	23.5	3.00	3.00	
630.0	9.90	75.93	628.4	6.9	27.6	28.4	3.00	3.00	
660.0	10.80	75.93	657.9	8.2	32.8	33.8	3.00	3.00	
690.0	11.70	75.93	687.3	9.6	38.5	39.7	3.00	3.00	
720.0	12.60	75.93	716.6	11.2	44.6	46.0	3.00	3.00	
750.0	13.50	75.93	745.8	12.8	51.2	52.8	3.00	3.00	
780.0	14.40	75.93	775.0	14.6	58.2	60.0	3.00	3.00	
810.0	15.30	75.93	804.0	16.5	65.7	67.7	3.00	3.00	
840.0	16.20	75.93	832.8	18.4	73.6	75.8	3.00	3.00	
870.0	17.10	75.93	861.6	20.5	81.9	84.4	3.00	3.00	
900.0	18.00	75.93	890.2	22.7	90.7	93.5	3.00	3.00	
930.0	18.90	75.93	918.6	25.0	99.9	103.0	3.00	3.00	
960.0	19.80	75.93	946.9	27.4	109.5	112.9	3.00	3.00	
990.0	20.70	75.93	975.1	30.0	119.6	123.3	3.00	3.00	
1,020.0	21.60	75.93	1,003.1	32.6	130.1	134.1	3.00	3.00	
1,050.0	22.50	75.93	1,030.9	35.3	141.0	145.4	3.00	3.00	
1,080.0	23.40	75.93	1,058.5	38.2	152.4	157.1	3.00	3.00	
1,110.0	24.30	75.93	1,085.9	41.1	164.1	169.2	3.00	3.00	
1,140.0	25.20	75.93	1,113.2	44.2	176.3	181.8	3.00	3.00	
1,170.0	26.10	75.93	1,140.2	47.3	188.9	194.7	3.00	3.00	
1,200.0	27.00	75.93	1,167.1	50.6	201.9	208.2	3.00	3.00	
1,230.0	27.90	75.93	1,193.7	54.0	215.3	222.0	3.00	3.00	
1,260.0	28.80	75.93	1,220.1	57.4	229.2	236.2	3.00	3.00	
1,290.0	29.70	75.93	1,246.3	61.0	243.4	250.9	3.00	3.00	
1,290.4	29.71	75.93	1,246.6	61.0	243.6	251.1	3.00	3.00	EOB; Inc=29.7°
1,320.0	29.71	75.93	1,272.3	64.6	257.8	265.8	0.00	0.00	
1,350.0	29.71	75.93	1,298.4	68.2	272.2	280.6	0.00	0.00	
1,380.0	29.71	75.93	1,324.4	71.8	286.6	295.5	0.00	0.00	
1,410.0	29.71	75.93	1,350.5	75.4	301.1	310.4	0.00	0.00	
1,440.0	29.71	75.93	1,376.5	79.1	315.5	325.2	0.00	0.00	
1,470.0	29.71	75.93	1,402.6	82.7	329.9	340.1	0.00	0.00	
1,500.0	29.71	75.93	1,428.6	86.3	344.3	355.0	0.00	0.00	

# Planning Report

<b>Database:</b>	USA EDM 5000 US Multi Users DB	<b>Local Co-ordinate Reference:</b>	Well NP MF11G-3 O04 696 (was 14C-3)
<b>Company:</b>	EnCana Oil & Gas (USA) Inc	<b>TVD Reference:</b>	WELL @ 6044.0ft (Original Well Elev)
<b>Project:</b>	North Piceance	<b>MD Reference:</b>	WELL @ 6044.0ft (Original Well Elev)
<b>Site:</b>	O04 696 (3rd)	<b>North Reference:</b>	True
<b>Well:</b>	NP MF11G-3 O04 696 (was 14C-3)	<b>Survey Calculation Method:</b>	Minimum Curvature
<b>Wellbore:</b>	DD		
<b>Design:</b>	Plan #2		

## Planned Survey

Measured Depth (ft)	Inclination (°)	Azimuth (°)	Vertical Depth (ft)	+N/-S (ft)	+E/-W (ft)	Vertical Section (ft)	Dogleg Rate (°/100ft)	Build Rate (°/100ft)	Comments / Formations
1,530.0	29.71	75.93	1,454.7	89.9	358.8	369.8	0.00	0.00	
1,560.0	29.71	75.93	1,480.8	93.5	373.2	384.7	0.00	0.00	
1,590.0	29.71	75.93	1,506.8	97.1	387.6	399.6	0.00	0.00	
1,620.0	29.71	75.93	1,532.9	100.7	402.0	414.4	0.00	0.00	
1,650.0	29.71	75.93	1,558.9	104.4	416.4	429.3	0.00	0.00	
1,680.0	29.71	75.93	1,585.0	108.0	430.9	444.2	0.00	0.00	
1,710.0	29.71	75.93	1,611.0	111.6	445.3	459.0	0.00	0.00	
1,740.0	29.71	75.93	1,637.1	115.2	459.7	473.9	0.00	0.00	
1,770.0	29.71	75.93	1,663.2	118.8	474.1	488.8	0.00	0.00	
1,800.0	29.71	75.93	1,689.2	122.4	488.6	503.6	0.00	0.00	
1,830.0	29.71	75.93	1,715.3	126.0	503.0	518.5	0.00	0.00	
1,860.0	29.71	75.93	1,741.3	129.7	517.4	533.4	0.00	0.00	
1,890.0	29.71	75.93	1,767.4	133.3	531.8	548.3	0.00	0.00	
1,920.0	29.71	75.93	1,793.4	136.9	546.3	563.1	0.00	0.00	
1,950.0	29.71	75.93	1,819.5	140.5	560.7	578.0	0.00	0.00	
1,980.0	29.71	75.93	1,845.5	144.1	575.1	592.9	0.00	0.00	
2,010.0	29.71	75.93	1,871.6	147.7	589.5	607.7	0.00	0.00	
2,040.0	29.71	75.93	1,897.7	151.3	604.0	622.6	0.00	0.00	
2,070.0	29.71	75.93	1,923.7	155.0	618.4	637.5	0.00	0.00	
2,100.0	29.71	75.93	1,949.8	158.6	632.8	652.3	0.00	0.00	
2,130.0	29.71	75.93	1,975.8	162.2	647.2	667.2	0.00	0.00	
2,160.0	29.71	75.93	2,001.9	165.8	661.6	682.1	0.00	0.00	
2,190.0	29.71	75.93	2,027.9	169.4	676.1	696.9	0.00	0.00	
2,220.0	29.71	75.93	2,054.0	173.0	690.5	711.8	0.00	0.00	
2,250.0	29.71	75.93	2,080.0	176.6	704.9	726.7	0.00	0.00	
2,280.0	29.71	75.93	2,106.1	180.3	719.3	741.5	0.00	0.00	
2,310.0	29.71	75.93	2,132.2	183.9	733.8	756.4	0.00	0.00	
2,340.0	29.71	75.93	2,158.2	187.5	748.2	771.3	0.00	0.00	
2,370.0	29.71	75.93	2,184.3	191.1	762.6	786.2	0.00	0.00	
2,400.0	29.71	75.93	2,210.3	194.7	777.0	801.0	0.00	0.00	
2,430.0	29.71	75.93	2,236.4	198.3	791.5	815.9	0.00	0.00	
2,460.0	29.71	75.93	2,262.4	201.9	805.9	830.8	0.00	0.00	
2,490.0	29.71	75.93	2,288.5	205.6	820.3	845.6	0.00	0.00	

## Targets

Target Name	Dip Angle (°)	Dip Dir. (°)	TVD (ft)	+N/-S (ft)	+E/-W (ft)	Northing (ft)	Easting (ft)	Latitude	Longitude
- hit/miss target									
- Shape									
O04 696 MF11G-3 BHL	0.00	0.00	8,389.0	580.9	2,261.3	1,636,521.06	2,267,004.02	39° 33' 8.03 N	108° 5' 59.56 W
- plan misses target center by 6279.6ft at 2490.0ft MD (2288.5 TVD, 205.6 N, 820.3 E)									
- Rectangle (sides W30.0 H50.0 D0.0)									
O04 696 MF11G-3 TGT	0.00	0.00	5,429.0	570.9	2,278.3	1,636,510.59	2,267,020.74	39° 33' 7.93 N	108° 5' 59.34 W
- plan misses target center by 3481.7ft at 2490.0ft MD (2288.5 TVD, 205.6 N, 820.3 E)									
- Point									

# Planning Report

**Database:** USA EDM 5000 US Multi Users DB  
**Company:** EnCana Oil & Gas (USA) Inc  
**Project:** North Piceance  
**Site:** O04 696 (3rd)  
**Well:** NP MF11G-3 O04 696 (was 14C-3)  
**Wellbore:** DD  
**Design:** Plan #2

**Local Co-ordinate Reference:** Well NP MF11G-3 O04 696 (was 14C-3)  
**TVD Reference:** WELL @ 6044.0ft (Original Well Elev)  
**MD Reference:** WELL @ 6044.0ft (Original Well Elev)  
**North Reference:** True  
**Survey Calculation Method:** Minimum Curvature

## Planned Survey

Measured Depth (ft)	Inclination (°)	Azimuth (°)	Vertical Depth (ft)	+N/-S (ft)	+E/-W (ft)	Vertical Section (ft)	Dogleg Rate (°/100ft)	Build Rate (°/100ft)	Comments / Formations
2,500.0	29.71	75.93	2,297.2	206.8	825.1	850.6	0.00	0.00	
2,600.0	29.71	75.93	2,384.0	218.8	873.2	900.1	0.00	0.00	
2,700.0	29.71	75.93	2,470.9	230.9	921.3	949.7	0.00	0.00	
2,800.0	29.71	75.93	2,557.7	242.9	969.3	999.3	0.00	0.00	
2,900.0	29.71	75.93	2,644.6	254.9	1,017.4	1,048.8	0.00	0.00	
3,000.0	29.71	75.93	2,731.4	267.0	1,065.5	1,098.4	0.00	0.00	
3,100.0	29.71	75.93	2,818.3	279.0	1,113.6	1,148.0	0.00	0.00	
3,200.0	29.71	75.93	2,905.1	291.1	1,161.6	1,197.5	0.00	0.00	
3,300.0	29.71	75.93	2,992.0	303.1	1,209.7	1,247.1	0.00	0.00	
3,400.0	29.71	75.93	3,078.9	315.2	1,257.8	1,296.6	0.00	0.00	
3,500.0	29.71	75.93	3,165.7	327.2	1,305.9	1,346.2	0.00	0.00	
3,600.0	29.71	75.93	3,252.6	339.3	1,354.0	1,395.8	0.00	0.00	
3,700.0	29.71	75.93	3,339.4	351.3	1,402.0	1,445.3	0.00	0.00	
3,800.0	29.71	75.93	3,426.3	363.4	1,450.1	1,494.9	0.00	0.00	
3,900.0	29.71	75.93	3,513.1	375.4	1,498.2	1,544.4	0.00	0.00	
4,000.0	29.71	75.93	3,600.0	387.5	1,546.3	1,594.0	0.00	0.00	
4,100.0	29.71	75.93	3,686.8	399.5	1,594.3	1,643.6	0.00	0.00	
4,200.0	29.71	75.93	3,773.7	411.6	1,642.4	1,693.1	0.00	0.00	
4,300.0	29.71	75.93	3,860.5	423.6	1,690.5	1,742.7	0.00	0.00	
4,400.0	29.71	75.93	3,947.4	435.7	1,738.6	1,792.3	0.00	0.00	
4,500.0	29.71	75.93	4,034.2	447.7	1,786.7	1,841.8	0.00	0.00	
4,600.0	29.71	75.93	4,121.1	459.8	1,834.7	1,891.4	0.00	0.00	
4,700.0	29.71	75.93	4,207.9	471.8	1,882.8	1,940.9	0.00	0.00	
4,800.0	29.71	75.93	4,294.8	483.8	1,930.9	1,990.5	0.00	0.00	
4,900.0	29.71	75.93	4,381.6	495.9	1,979.0	2,040.1	0.00	0.00	
5,000.0	29.71	75.93	4,468.5	507.9	2,027.0	2,089.6	0.00	0.00	
5,016.0	29.71	75.93	4,482.4	509.9	2,034.7	2,097.6	0.00	0.00	Start Drop -3.00
5,100.0	27.19	75.93	4,556.2	519.6	2,073.6	2,137.6	3.00	-3.00	
5,200.0	24.19	75.93	4,646.3	530.1	2,115.6	2,180.9	3.00	-3.00	
5,300.0	21.19	75.93	4,738.6	539.5	2,153.0	2,219.5	3.00	-3.00	
5,400.0	18.19	75.93	4,832.7	547.7	2,185.7	2,253.2	3.00	-3.00	
5,458.9	16.42	75.93	4,889.0	552.0	2,202.7	2,270.7	3.00	-3.00	Williams Fork
5,500.0	15.19	75.93	4,928.5	554.7	2,213.6	2,281.9	3.00	-3.00	
5,500.5	15.18	75.93	4,929.0	554.7	2,213.7	2,282.0	3.00	-3.00	Top of Gas; Inc=15°
5,600.0	12.19	75.93	5,025.7	560.4	2,236.5	2,305.6	3.00	-3.00	
5,700.0	9.19	75.93	5,123.9	564.9	2,254.5	2,324.1	3.00	-3.00	
5,800.0	6.19	75.93	5,223.0	568.2	2,267.5	2,337.5	3.00	-3.00	
5,900.0	3.19	75.93	5,322.7	570.2	2,275.4	2,345.7	3.00	-3.00	
6,000.0	0.19	75.93	5,422.6	570.9	2,278.3	2,348.6	3.00	-3.00	
6,006.4	0.00	0.00	5,429.0	570.9	2,278.3	2,348.6	3.00	-3.00	EOD; Inc=0° - O04 696 MF11G-3 TGT (6.13.11)
6,100.0	0.23	300.42	5,522.6	571.0	2,278.1	2,348.5	0.25	0.25	
6,163.3	0.39	300.42	5,585.9	571.2	2,277.8	2,348.3	0.25	0.25	
6,200.0	0.39	300.42	5,622.6	571.3	2,277.6	2,348.1	0.00	0.00	
6,300.0	0.39	300.42	5,722.6	571.6	2,277.0	2,347.6	0.00	0.00	
6,400.0	0.39	300.42	5,822.6	572.0	2,276.4	2,347.1	0.00	0.00	
6,500.0	0.39	300.42	5,922.6	572.3	2,275.8	2,346.6	0.00	0.00	
6,600.0	0.39	300.42	6,022.6	572.7	2,275.3	2,346.1	0.00	0.00	
6,700.0	0.39	300.42	6,122.6	573.0	2,274.7	2,345.7	0.00	0.00	
6,800.0	0.39	300.42	6,222.6	573.4	2,274.1	2,345.2	0.00	0.00	
6,900.0	0.39	300.42	6,322.6	573.7	2,273.5	2,344.7	0.00	0.00	
7,000.0	0.39	300.42	6,422.6	574.1	2,272.9	2,344.2	0.00	0.00	
7,100.0	0.39	300.42	6,522.6	574.4	2,272.3	2,343.7	0.00	0.00	

## Planning Report

<b>Database:</b>	USA EDM 5000 US Multi Users DB	<b>Local Co-ordinate Reference:</b>	Well NP MF11G-3 O04 696 (was 14C-3)
<b>Company:</b>	EnCana Oil & Gas (USA) Inc	<b>TVD Reference:</b>	WELL @ 6044.0ft (Original Well Elev)
<b>Project:</b>	North Piceance	<b>MD Reference:</b>	WELL @ 6044.0ft (Original Well Elev)
<b>Site:</b>	O04 696 (3rd)	<b>North Reference:</b>	True
<b>Well:</b>	NP MF11G-3 O04 696 (was 14C-3)	<b>Survey Calculation Method:</b>	Minimum Curvature
<b>Wellbore:</b>	DD		
<b>Design:</b>	Plan #2		

Planned Survey									
Measured Depth (ft)	Inclination (°)	Azimuth (°)	Vertical Depth (ft)	+N/-S (ft)	+E/-W (ft)	Vertical Section (ft)	Dogleg Rate (°/100ft)	Build Rate (°/100ft)	Comments / Formations
7,200.0	0.39	300.42	6,622.6	574.8	2,271.7	2,343.2	0.00	0.00	
7,300.0	0.39	300.42	6,722.6	575.1	2,271.1	2,342.8	0.00	0.00	
7,400.0	0.39	300.42	6,822.6	575.5	2,270.5	2,342.3	0.00	0.00	
7,500.0	0.39	300.42	6,922.6	575.8	2,269.9	2,341.8	0.00	0.00	
7,600.0	0.39	300.42	7,022.6	576.2	2,269.4	2,341.3	0.00	0.00	
7,700.0	0.39	300.42	7,122.6	576.5	2,268.8	2,340.8	0.00	0.00	
7,800.0	0.39	300.42	7,222.6	576.8	2,268.2	2,340.3	0.00	0.00	
7,900.0	0.39	300.42	7,322.6	577.2	2,267.6	2,339.9	0.00	0.00	
8,000.0	0.39	300.42	7,422.6	577.5	2,267.0	2,339.4	0.00	0.00	
8,100.0	0.39	300.42	7,522.6	577.9	2,266.4	2,338.9	0.00	0.00	
8,200.0	0.39	300.42	7,622.5	578.2	2,265.8	2,338.4	0.00	0.00	
8,300.0	0.39	300.42	7,722.5	578.6	2,265.2	2,337.9	0.00	0.00	
8,400.0	0.39	300.42	7,822.5	578.9	2,264.6	2,337.4	0.00	0.00	
8,500.0	0.39	300.42	7,922.5	579.3	2,264.0	2,337.0	0.00	0.00	
8,600.0	0.39	300.42	8,022.5	579.6	2,263.5	2,336.5	0.00	0.00	
8,700.0	0.39	300.42	8,122.5	580.0	2,262.9	2,336.0	0.00	0.00	
8,800.0	0.39	300.42	8,222.5	580.3	2,262.3	2,335.5	0.00	0.00	
8,900.0	0.39	300.42	8,322.5	580.7	2,261.7	2,335.0	0.00	0.00	
8,966.5	0.39	300.42	8,389.0	580.9	2,261.3	2,334.7	0.00	0.00	Rollins - O04 696 MF11G-3 BHL (6.13.11)
9,000.0	0.39	300.42	8,422.5	581.0	2,261.1	2,334.5	0.00	0.00	
9,100.0	0.39	300.42	8,522.5	581.4	2,260.5	2,334.0	0.00	0.00	
9,116.5	0.39	300.42	8,539.0	581.4	2,260.4	2,334.0	0.00	0.00	Drillers TD @ 8539' TVD
9,200.0	0.39	300.42	8,622.5	581.7	2,259.9	2,333.6	0.00	0.00	
9,300.0	0.39	300.42	8,722.5	582.0	2,259.3	2,333.1	0.00	0.00	
9,400.0	0.39	300.42	8,822.5	582.4	2,258.7	2,332.6	0.00	0.00	
9,500.0	0.39	300.42	8,922.5	582.7	2,258.1	2,332.1	0.00	0.00	
9,600.0	0.39	300.42	9,022.5	583.1	2,257.5	2,331.6	0.00	0.00	
9,700.0	0.39	300.42	9,122.5	583.4	2,257.0	2,331.1	0.00	0.00	
9,800.0	0.39	300.42	9,222.5	583.8	2,256.4	2,330.7	0.00	0.00	
9,900.0	0.39	300.42	9,322.5	584.1	2,255.8	2,330.2	0.00	0.00	
10,000.0	0.39	300.42	9,422.5	584.5	2,255.2	2,329.7	0.00	0.00	
10,100.0	0.39	300.42	9,522.5	584.8	2,254.6	2,329.2	0.00	0.00	
10,200.0	0.39	300.42	9,622.5	585.2	2,254.0	2,328.7	0.00	0.00	
10,300.0	0.39	300.42	9,722.5	585.5	2,253.4	2,328.2	0.00	0.00	
10,400.0	0.39	300.42	9,822.5	585.9	2,252.8	2,327.8	0.00	0.00	
10,500.0	0.39	300.42	9,922.5	586.2	2,252.2	2,327.3	0.00	0.00	
10,577.5	0.39	300.42	10,000.0	586.5	2,251.8	2,326.9	0.00	0.00	Permit TD @ 10000' TVD

Targets									
Target Name	Dip Angle (°)	Dip Dir. (°)	TVD (ft)	+N/-S (ft)	+E/-W (ft)	Northing (ft)	Easting (ft)	Latitude	Longitude
- hit/miss target									
- Shape									
O04 696 MF11G-3 BHL - plan hits target center - Rectangle (sides W30.0 H50.0 D0.0)	0.00	0.00	8,389.0	580.9	2,261.3	1,636,521.06	2,267,004.02	39° 33' 8.03 N	108° 5' 59.56 W
O04 696 MF11G-3 TGT - plan hits target center - Point	0.00	0.00	5,429.0	570.9	2,278.3	1,636,510.59	2,267,020.74	39° 33' 7.93 N	108° 5' 59.34 W

## Planning Report

<b>Database:</b>	USA EDM 5000 US Multi Users DB	<b>Local Co-ordinate Reference:</b>	Well NP MF11G-3 O04 696 (was 14C-3)
<b>Company:</b>	EnCana Oil & Gas (USA) Inc	<b>TVD Reference:</b>	WELL @ 6044.0ft (Original Well Elev)
<b>Project:</b>	North Piceance	<b>MD Reference:</b>	WELL @ 6044.0ft (Original Well Elev)
<b>Site:</b>	O04 696 (3rd)	<b>North Reference:</b>	True
<b>Well:</b>	NP MF11G-3 O04 696 (was 14C-3)	<b>Survey Calculation Method:</b>	Minimum Curvature
<b>Wellbore:</b>	DD		
<b>Design:</b>	Plan #2		

Formations					
Measured Depth (ft)	Vertical Depth (ft)	Name	Lithology	Dip (°)	Dip Direction (°)
5,458.9	4,889.0	Williams Fork		0.00	
5,500.5	4,929.0	Top of Gas; Inc=15°		0.00	
8,966.5	8,389.0	Rollins		0.00	

Plan Annotations				
Measured Depth (ft)	Vertical Depth (ft)	Local Coordinates		Comment
		+N/-S (ft)	+E/-W (ft)	
300.0	300.0	0.0	0.0	KOP @ 300'
1,290.4	1,246.6	61.0	243.6	EOB; Inc=29.7°
5,016.0	4,482.4	509.9	2,034.7	Start Drop -3.00
6,006.4	5,429.0	570.9	2,278.3	EOD; Inc=0°
9,116.5	8,539.0	571.2	2,277.8	Drillers TD @ 8539' TVD
10,577.5	10,000.0	580.9	2,261.3	Permit TD @ 10000' TVD

# **EnCana Oil & Gas (USA) Inc**

**North Piceance**

**O04 696 (3rd)**

**NP MF11G-3 O04 696 (was 14C-3)**

**DD**

**Plan #2**

## **Anticollision Report**

**15 June, 2011**



## Anticollision Report

<b>Company:</b>	EnCana Oil & Gas (USA) Inc	<b>Local Co-ordinate Reference:</b>	Well NP MF11G-3 O04 696 (was 14C-3)
<b>Project:</b>	North Piceance	<b>TVD Reference:</b>	WELL @ 6044.0ft (Original Well Elev)
<b>Reference Site:</b>	O04 696 (3rd)	<b>MD Reference:</b>	WELL @ 6044.0ft (Original Well Elev)
<b>Site Error:</b>	0.0ft	<b>North Reference:</b>	True
<b>Reference Well:</b>	NP MF11G-3 O04 696 (was 14C-3)	<b>Survey Calculation Method:</b>	Minimum Curvature
<b>Well Error:</b>	0.0ft	<b>Output errors are at</b>	2.00 sigma
<b>Reference Wellbore</b>	DD	<b>Database:</b>	USA EDM 5000 US Multi Users DB
<b>Reference Design:</b>	Plan #2	<b>Offset TVD Reference:</b>	Offset Datum

<b>Reference</b>	Plan #2		
<b>Filter type:</b>	NO GLOBAL FILTER: Using user defined selection & filtering criteria		
<b>Interpolation Method:</b>	MD Interval 100.0ft	<b>Error Model:</b>	Systematic Ellipse
<b>Depth Range:</b>	Unlimited	<b>Scan Method:</b>	Closest Approach 3D
<b>Results Limited by:</b>	Maximum center-center distance of 100.0ft	<b>Error Surface:</b>	Elliptical Conic
<b>Warning Levels Evaluated at:</b>	2.00 Sigma		

<b>Survey Tool Program</b>		<b>Date</b>	6/15/2011		
<b>From (ft)</b>	<b>To (ft)</b>	<b>Survey (Wellbore)</b>	<b>Tool Name</b>	<b>Description</b>	
0.0	10,577.5	Plan #2 (DD)	MWD	Geolink MWD	

# Anticollision Report

<b>Company:</b>	EnCana Oil & Gas (USA) Inc	<b>Local Co-ordinate Reference:</b>	Well NP MF11G-3 O04 696 (was 14C-3)
<b>Project:</b>	North Piceance	<b>TVD Reference:</b>	WELL @ 6044.0ft (Original Well Elev)
<b>Reference Site:</b>	O04 696 (3rd)	<b>MD Reference:</b>	WELL @ 6044.0ft (Original Well Elev)
<b>Site Error:</b>	0.0ft	<b>North Reference:</b>	True
<b>Reference Well:</b>	NP MF11G-3 O04 696 (was 14C-3)	<b>Survey Calculation Method:</b>	Minimum Curvature
<b>Well Error:</b>	0.0ft	<b>Output errors are at</b>	2.00 sigma
<b>Reference Wellbore</b>	DD	<b>Database:</b>	USA EDM 5000 US Multi Users DB
<b>Reference Design:</b>	Plan #2	<b>Offset TVD Reference:</b>	Offset Datum

## Summary

Site Name	Reference Measured Depth (ft)	Offset Measured Depth (ft)	Distance Between Centres (ft)	Between Ellipses (ft)	Separation Factor	Warning
<b>Offset Well - Wellbore - Design</b>						
N04 696 Pad (NESW Sec4-T6S-R96W)						
NP MF16A N04 696 - DD - DD						Out of range
NP MF16A N04 696 - DD - Plan #1						Out of range
NP MF16A N04 696 - DD - Plan#2						Out of range
O04 696 (3rd)						
NP MF01D-9 O04 696 (was 17C-4) - DD - Plan #2	233.7	233.7	55.5	54.8	75.119	CC, ES
NP MF01D-9 O04 696 (was 17C-4) - DD - Plan #2	500.0	494.0	73.8	72.1	42.906	SF
NP MF02A-9 O04 696 (was 18C-4) - DD - Plan #2	200.0	200.0	83.6	83.0	134.623	CC, ES
NP MF02A-9 O04 696 (was 18C-4) - DD - Plan #2	400.0	391.7	94.7	93.4	71.905	SF
NP MF06A-3 O04 696 (was 11C-3) - DD - Plan #2	200.0	200.0	35.8	35.2	57.656	CC, ES
NP MF06A-3 O04 696 (was 11C-3) - DD - Plan #2	500.0	493.3	50.2	48.5	29.528	SF
NP MF06B-3 O04 696 (was 15A-4) - DD - Plan #2	200.0	200.0	56.3	55.7	90.612	CC, ES
NP MF06B-3 O04 696 (was 15A-4) - DD - Plan #2	700.0	680.7	90.0	87.4	34.668	SF
NP MF06C-3 O04 696 (was 09C-4) - DD - Plan #2	200.0	200.0	64.0	63.4	102.968	CC, ES
NP MF06C-3 O04 696 (was 09C-4) - DD - Plan #2	700.0	680.6	96.3	93.7	36.906	SF
NP MF06E-3 O04 696 (was 11B-3) - DD - Plan #2	200.0	200.0	64.9	64.3	104.407	CC, ES
NP MF06E-3 O04 696 (was 11B-3) - DD - Plan #2	800.0	775.8	95.6	92.5	31.525	SF
NP MF08B-9 O04 696 (was 01B-9) - DD - Plan #2	200.0	200.0	76.5	75.9	123.121	CC, ES
NP MF08B-9 O04 696 (was 01B-9) - DD - Plan #2	400.0	393.8	85.7	84.4	64.227	SF
NP MF11A-3 O04 696 (was 12C-3) - DD - Plan #2	300.0	300.0	56.7	55.7	58.440	CC
NP MF11A-3 O04 696 (was 12C-3) - DD - Plan #2	400.0	397.1	57.0	55.7	43.324	ES
NP MF11A-3 O04 696 (was 12C-3) - DD - Plan #2	900.0	877.9	86.0	81.9	20.658	SF
NP MF11B-3 O04 696 (was 14A-3) - DD - Plan #2	200.0	200.0	36.6	35.9	58.842	CC, ES
NP MF11B-3 O04 696 (was 14A-3) - DD - Plan #2	1,000.0	973.8	94.8	89.8	18.978	SF
NP MF11D-3 O04 696 (was 14B-3) - DD - Plan #2	200.0	200.0	29.1	28.5	46.868	CC, ES
NP MF11D-3 O04 696 (was 14B-3) - DD - Plan #2	1,200.0	1,169.5	99.5	92.2	13.556	SF
NP MF11E-3 O04 696 (was 13A-3) - DD - Plan #2	200.0	200.0	7.7	7.1	12.356	CC, ES
NP MF11E-3 O04 696 (was 13A-3) - DD - Plan #2	1,500.0	1,480.0	94.1	81.2	7.337	SF
NP MF14A-3 O04 696 (was 13B-3) - DD - Plan #2	200.0	200.0	11.0	10.4	17.724	CC, ES
NP MF14A-3 O04 696 (was 13B-3) - DD - Plan #2	1,900.0	1,877.2	99.2	86.7	7.949	SF
NP MF14C-3 O04 696 (was 14D-3) - DD - Plan #2	200.0	200.0	8.1	7.4	12.962	CC, ES
NP MF14C-3 O04 696 (was 14D-3) - DD - Plan #2	1,500.0	1,481.3	99.5	85.3	7.049	SF
NP MF14D-3 O04 696 (was 19A-3) - DD - Plan #2	300.0	300.0	19.7	18.7	20.283	CC, ES
NP MF14D-3 O04 696 (was 19A-3) - DD - Plan #2	1,300.0	1,298.8	98.7	87.7	8.974	SF
NP MF14E-3 O04 696 (was 19B-3) - DD - Plan #2	253.2	253.2	21.2	20.4	26.210	CC
NP MF14E-3 O04 696 (was 19B-3) - DD - Plan #2	300.0	299.9	21.3	20.3	21.899	ES
NP MF14E-3 O04 696 (was 19B-3) - DD - Plan #2	1,000.0	985.5	98.2	91.9	15.637	SF
NP MF15A-4 O04 696 (was 11D-3) - DD - Plan #2	200.0	200.0	28.2	27.5	45.306	CC, ES
NP MF15A-4 O04 696 (was 11D-3) - DD - Plan #2	500.0	494.6	42.0	40.2	24.450	SF
NP MF15D-4 O04 696 (was 01B-9) - DD - Plan #2	300.0	300.0	76.0	75.0	78.293	CC, ES
NP MF15D-4 O04 696 (was 01B-9) - DD - Plan #2	500.0	496.5	88.1	86.4	52.386	SF
NP MF18B-4 O04 696 (was 01A-9) - DD - Plan #2	200.0	200.0	84.1	83.5	135.424	CC, ES
NP MF18B-4 O04 696 (was 01A-9) - DD - Plan #2	400.0	392.0	94.7	93.4	71.734	SF
NP MF19A-3 O04 696 (was 17B-4) - DD - Plan #2	319.9	320.2	27.9	26.9	26.737	CC, ES
NP MF19A-3 O04 696 (was 17B-4) - DD - Plan #2	700.0	698.4	53.7	50.6	17.587	SF
NP MF19C-3 O04 696 (was 20B-3) - DD - Plan #2	200.0	200.0	29.4	28.8	47.377	CC, ES
NP MF19C-3 O04 696 (was 20B-3) - DD - Plan #2	600.0	595.6	54.0	51.7	22.549	SF
NP MF19D-3 O04 696 (was 19C-3) - DD - Plan #2	300.0	300.0	47.8	46.9	49.286	CC, ES
NP MF19D-3 O04 696 (was 19C-3) - DD - Plan #2	700.0	697.7	83.0	80.3	30.954	SF
NP MF19E-3 O04 696 (was 19D-3) - DD - Plan #2	200.0	200.0	48.6	47.9	78.153	CC, ES
NP MF19E-3 O04 696 (was 19D-3) - DD - Plan #2	700.0	691.0	92.4	89.3	29.873	SF
NP MF20F-3 O04 696 (was 20D-3) - DD - Plan #2	200.0	200.0	56.2	55.5	90.384	CC, ES
NP MF20F-3 O04 696 (was 20D-3) - DD - Plan #2	600.0	592.0	87.8	85.4	37.296	SF

CC - Min centre to center distance or convergent point, SF - min separation factor, ES - min ellipse separation

## Anticollision Report

<b>Company:</b>	EnCana Oil & Gas (USA) Inc	<b>Local Co-ordinate Reference:</b>	Well NP MF11G-3 O04 696 (was 14C-3)
<b>Project:</b>	North Piceance	<b>TVD Reference:</b>	WELL @ 6044.0ft (Original Well Elev)
<b>Reference Site:</b>	O04 696 (3rd)	<b>MD Reference:</b>	WELL @ 6044.0ft (Original Well Elev)
<b>Site Error:</b>	0.0ft	<b>North Reference:</b>	True
<b>Reference Well:</b>	NP MF11G-3 O04 696 (was 14C-3)	<b>Survey Calculation Method:</b>	Minimum Curvature
<b>Well Error:</b>	0.0ft	<b>Output errors are at</b>	2.00 sigma
<b>Reference Wellbore</b>	DD	<b>Database:</b>	USA EDM 5000 US Multi Users DB
<b>Reference Design:</b>	Plan #2	<b>Offset TVD Reference:</b>	Offset Datum

Summary						
Site Name	Reference Measured Depth (ft)	Offset Measured Depth (ft)	Distance Between Centres (ft)	Distance Between Ellipses (ft)	Separation Factor	Warning
Offset Well - Wellbore - Design						

## Anticollision Report

<b>Company:</b>	EnCana Oil & Gas (USA) Inc	<b>Local Co-ordinate Reference:</b>	Well NP MF11G-3 O04 696 (was 14C-3)
<b>Project:</b>	North Piceance	<b>TVD Reference:</b>	WELL @ 6044.0ft (Original Well Elev)
<b>Reference Site:</b>	O04 696 (3rd)	<b>MD Reference:</b>	WELL @ 6044.0ft (Original Well Elev)
<b>Site Error:</b>	0.0ft	<b>North Reference:</b>	True
<b>Reference Well:</b>	NP MF11G-3 O04 696 (was 14C-3)	<b>Survey Calculation Method:</b>	Minimum Curvature
<b>Well Error:</b>	0.0ft	<b>Output errors are at</b>	2.00 sigma
<b>Reference Wellbore</b>	DD	<b>Database:</b>	USA EDM 5000 US Multi Users DB
<b>Reference Design:</b>	Plan #2	<b>Offset TVD Reference:</b>	Offset Datum

<b>Offset Design</b> O04 696 (3rd) - NP MF01D-9 O04 696 (was 17C-4) - DD - Plan #2													<b>Offset Site Error:</b> 0.0 ft
Survey Program: 0-MWD													<b>Offset Well Error:</b> 0.0 ft
Reference		Offset		Semi Major Axis		Distance							
Measured Depth (ft)	Vertical Depth (ft)	Measured Depth (ft)	Vertical Depth (ft)	Reference (ft)	Offset (ft)	Highside Toolface (°)	Offset Wellbore Centre +N/-S (ft)	+E/-W (ft)	Between Centres (ft)	Between Ellipses (ft)	Total Uncertainty Axis	Separation Factor	Warning
0.0	0.0	0.0	0.0	0.0	0.0	-141.62	-43.5	-34.5	55.5				
100.0	100.0	100.0	100.0	0.1	0.1	-141.62	-43.5	-34.5	55.5	55.2	0.27	203.892	
200.0	200.0	200.0	200.0	0.3	0.3	-141.62	-43.5	-34.5	55.5	54.9	0.62	89.346	
233.7	233.7	233.7	233.7	0.4	0.4	-141.62	-43.5	-34.5	55.5	54.8	0.74	75.119 CC, ES	
300.0	300.0	299.1	299.1	0.5	0.5	-142.14	-44.1	-34.3	55.9	54.9	0.97	57.699	
400.0	400.0	397.1	396.9	0.7	0.7	139.59	-49.0	-33.1	61.2	59.8	1.33	46.100	
500.0	499.6	494.0	493.3	0.9	0.9	137.27	-58.6	-30.7	73.8	72.1	1.72	42.906 SF	
600.0	598.8	589.1	587.3	1.1	1.2	135.44	-72.6	-27.1	93.6	91.4	2.17	43.142	

## Anticollision Report

<b>Company:</b>	EnCana Oil & Gas (USA) Inc	<b>Local Co-ordinate Reference:</b>	Well NP MF11G-3 O04 696 (was 14C-3)
<b>Project:</b>	North Piceance	<b>TVD Reference:</b>	WELL @ 6044.0ft (Original Well Elev)
<b>Reference Site:</b>	O04 696 (3rd)	<b>MD Reference:</b>	WELL @ 6044.0ft (Original Well Elev)
<b>Site Error:</b>	0.0ft	<b>North Reference:</b>	True
<b>Reference Well:</b>	NP MF11G-3 O04 696 (was 14C-3)	<b>Survey Calculation Method:</b>	Minimum Curvature
<b>Well Error:</b>	0.0ft	<b>Output errors are at</b>	2.00 sigma
<b>Reference Wellbore</b>	DD	<b>Database:</b>	USA EDM 5000 US Multi Users DB
<b>Reference Design:</b>	Plan #2	<b>Offset TVD Reference:</b>	Offset Datum

Offset Design													Offset Site Error:		0.0 ft
Survey Program: 0-MWD													Offset Well Error:		0.0 ft
Reference		Offset		Semi Major Axis		Distance							Warning		
Measured Depth Depth (ft)	Vertical Depth (ft)	Measured Depth (ft)	Vertical Depth (ft)	Reference (ft)	Offset (ft)	Highside Toolface (°)	Offset Wellbore Centre +N/-S (ft)	+E/-W (ft)	Between Centres (ft)	Between Ellipses (ft)	Total Uncertainty Axis	Separation Factor			
0.0	0.0	0.0	0.0	0.0	0.0	-141.83	-65.8	-51.7	83.6						
100.0	100.0	100.0	100.0	0.1	0.1	-141.83	-65.8	-51.7	83.6	83.4	0.27	307.215			
200.0	200.0	200.0	200.0	0.3	0.3	-141.83	-65.8	-51.7	83.6	83.0	0.62	134.623 CC, ES			
300.0	300.0	296.2	296.1	0.5	0.5	-142.57	-68.1	-52.1	85.9	84.9	0.97	88.688			
400.0	400.0	391.7	391.4	0.7	0.7	140.30	-75.2	-53.5	94.7	93.4	1.32	71.905 SF			

## Anticollision Report

<b>Company:</b>	EnCana Oil & Gas (USA) Inc	<b>Local Co-ordinate Reference:</b>	Well NP MF11G-3 O04 696 (was 14C-3)
<b>Project:</b>	North Piceance	<b>TVD Reference:</b>	WELL @ 6044.0ft (Original Well Elev)
<b>Reference Site:</b>	O04 696 (3rd)	<b>MD Reference:</b>	WELL @ 6044.0ft (Original Well Elev)
<b>Site Error:</b>	0.0ft	<b>North Reference:</b>	True
<b>Reference Well:</b>	NP MF11G-3 O04 696 (was 14C-3)	<b>Survey Calculation Method:</b>	Minimum Curvature
<b>Well Error:</b>	0.0ft	<b>Output errors are at</b>	2.00 sigma
<b>Reference Wellbore</b>	DD	<b>Database:</b>	USA EDM 5000 US Multi Users DB
<b>Reference Design:</b>	Plan #2	<b>Offset TVD Reference:</b>	Offset Datum

Offset Design													004 696 (3rd) - NP MF06A-3 004 696 (was 11C-3) - DD - Plan #2		Offset Site Error:		0.0 ft	
Survey Program: 0-MWD													Offset Well Error:		0.0 ft			
Reference		Offset		Semi Major Axis			Distance							Warning				
Measured Depth (ft)	Vertical Depth (ft)	Measured Depth (ft)	Vertical Depth (ft)	Reference (ft)	Offset (ft)	Highside Toolface (°)	Offset Wellbore Centre +N/-S (ft) +E/-W (ft)		Between Centres (ft)	Between Ellipses (ft)	Total Uncertainty Axis	Separation Factor						
0.0	0.0	0.0	0.0	0.0	0.0	37.75	28.3	21.9	35.8									
100.0	100.0	100.0	100.0	0.1	0.1	37.75	28.3	21.9	35.8	35.6	0.27	131.575						
200.0	200.0	200.0	200.0	0.3	0.3	37.75	28.3	21.9	35.8	35.2	0.62	57.656 CC, ES						
300.0	300.0	298.5	298.4	0.5	0.5	35.40	30.9	21.9	37.9	36.9	0.97	39.016						
400.0	400.0	396.4	396.1	0.7	0.7	-48.59	38.4	21.9	42.6	41.3	1.33	32.111						
500.0	499.6	493.3	492.2	0.9	1.0	-61.55	50.8	21.9	50.2	48.5	1.70	29.528 SF						
600.0	598.8	588.6	586.0	1.1	1.3	-75.11	67.7	21.9	63.3	61.2	2.13	29.731						
700.0	697.1	681.9	676.8	1.5	1.7	-86.24	88.8	21.9	83.3	80.6	2.67	31.179						

## Anticollision Report

<b>Company:</b>	EnCana Oil & Gas (USA) Inc	<b>Local Co-ordinate Reference:</b>	Well NP MF11G-3 O04 696 (was 14C-3)
<b>Project:</b>	North Piceance	<b>TVD Reference:</b>	WELL @ 6044.0ft (Original Well Elev)
<b>Reference Site:</b>	O04 696 (3rd)	<b>MD Reference:</b>	WELL @ 6044.0ft (Original Well Elev)
<b>Site Error:</b>	0.0ft	<b>North Reference:</b>	True
<b>Reference Well:</b>	NP MF11G-3 O04 696 (was 14C-3)	<b>Survey Calculation Method:</b>	Minimum Curvature
<b>Well Error:</b>	0.0ft	<b>Output errors are at</b>	2.00 sigma
<b>Reference Wellbore</b>	DD	<b>Database:</b>	USA EDM 5000 US Multi Users DB
<b>Reference Design:</b>	Plan #2	<b>Offset TVD Reference:</b>	Offset Datum

Offset Design												Offset Site Error:		0.0 ft
Survey Program: 0-MWD												Offset Well Error:		0.0 ft
Reference		Offset		Semi Major Axis			Distance					Warning		
Measured Depth (ft)	Vertical Depth (ft)	Measured Depth (ft)	Vertical Depth (ft)	Reference (ft)	Offset (ft)	Highside Toolface (°)	Offset Wellbore Centre +N/-S (ft)	+E/-W (ft)	Between Centres (ft)	Between Ellipses (ft)	Total Uncertainty Axis		Separation Factor	
0.0	0.0	0.0	0.0	0.0	0.0	37.75	44.5	34.5	56.3					
100.0	100.0	100.0	100.0	0.1	0.1	37.75	44.5	34.5	56.3	56.0	0.27	206.780		
200.0	200.0	200.0	200.0	0.3	0.3	37.75	44.5	34.5	56.3	55.7	0.62	90.612 CC, ES		
300.0	300.0	297.1	297.0	0.5	0.5	37.76	46.5	36.0	58.8	57.9	0.97	60.474		
400.0	400.0	393.8	393.4	0.7	0.7	-39.42	52.2	40.5	64.4	63.1	1.31	49.122		
500.0	499.6	490.0	488.9	0.9	1.0	-42.87	61.8	48.0	71.2	69.5	1.67	42.532		
600.0	598.8	585.7	583.1	1.1	1.3	-47.74	75.0	58.4	79.5	77.4	2.08	38.168		
700.0	697.1	680.7	675.6	1.5	1.7	-53.28	91.8	71.6	90.0	87.4	2.60	34.668 SF		

## Anticollision Report

<b>Company:</b>	EnCana Oil & Gas (USA) Inc	<b>Local Co-ordinate Reference:</b>	Well NP MF11G-3 O04 696 (was 14C-3)
<b>Project:</b>	North Piceance	<b>TVD Reference:</b>	WELL @ 6044.0ft (Original Well Elev)
<b>Reference Site:</b>	O04 696 (3rd)	<b>MD Reference:</b>	WELL @ 6044.0ft (Original Well Elev)
<b>Site Error:</b>	0.0ft	<b>North Reference:</b>	True
<b>Reference Well:</b>	NP MF11G-3 O04 696 (was 14C-3)	<b>Survey Calculation Method:</b>	Minimum Curvature
<b>Well Error:</b>	0.0ft	<b>Output errors are at</b>	2.00 sigma
<b>Reference Wellbore</b>	DD	<b>Database:</b>	USA EDM 5000 US Multi Users DB
<b>Reference Design:</b>	Plan #2	<b>Offset TVD Reference:</b>	Offset Datum

Offset Design												004 696 (3rd) - NP MF06C-3 004 696 (was 09C-4) - DD - Plan #2		Offset Site Error:		0.0 ft	
Survey Program: 0-MWD												Offset Well Error:		0.0 ft			
Reference		Offset		Semi Major Axis			Distance										
Measured Depth (ft)	Vertical Depth (ft)	Measured Depth (ft)	Vertical Depth (ft)	Reference (ft)	Offset (ft)	Highside Toolface (°)	Offset Wellbore Centre +N/-S (ft)	+E/-W (ft)	Between Centres (ft)	Between Ellipses (ft)	Total Uncertainty Axis	Separation Factor	Warning				
0.0	0.0	0.0	0.0	0.0	0.0	37.75	50.6	39.2	64.0								
100.0	100.0	100.0	100.0	0.1	0.1	37.75	50.6	39.2	64.0	63.7	0.27	234.978					
200.0	200.0	200.0	200.0	0.3	0.3	37.75	50.6	39.2	64.0	63.4	0.62	102.968	CC, ES				
300.0	300.0	297.4	297.3	0.5	0.5	36.40	53.1	39.1	66.0	65.0	0.97	68.092					
400.0	400.0	394.1	393.8	0.7	0.7	-44.30	60.4	39.1	70.3	69.0	1.32	53.127					
500.0	499.6	490.1	489.1	0.9	0.9	-50.76	71.3	41.8	76.4	74.7	1.69	45.297					
600.0	598.8	585.6	583.3	1.1	1.3	-57.42	85.4	47.8	85.0	82.9	2.09	40.569					
700.0	697.1	680.6	676.3	1.5	1.6	-63.72	102.7	57.3	96.3	93.7	2.61	36.906	SF				



## Anticollision Report

<b>Company:</b>	EnCana Oil & Gas (USA) Inc	<b>Local Co-ordinate Reference:</b>	Well NP MF11G-3 O04 696 (was 14C-3)
<b>Project:</b>	North Piceance	<b>TVD Reference:</b>	WELL @ 6044.0ft (Original Well Elev)
<b>Reference Site:</b>	O04 696 (3rd)	<b>MD Reference:</b>	WELL @ 6044.0ft (Original Well Elev)
<b>Site Error:</b>	0.0ft	<b>North Reference:</b>	True
<b>Reference Well:</b>	NP MF11G-3 O04 696 (was 14C-3)	<b>Survey Calculation Method:</b>	Minimum Curvature
<b>Well Error:</b>	0.0ft	<b>Output errors are at</b>	2.00 sigma
<b>Reference Wellbore</b>	DD	<b>Database:</b>	USA EDM 5000 US Multi Users DB
<b>Reference Design:</b>	Plan #2	<b>Offset TVD Reference:</b>	Offset Datum

Offset Design													O04 696 (3rd) - NP MF06E-3 O04 696 (was 11B-3) - DD - Plan #2		Offset Site Error:		0.0 ft
Survey Program: 0-MWD													Offset Well Error:		0.0 ft		
Reference		Offset		Semi Major Axis			Distance										
Measured Depth	Vertical Depth	Measured Depth	Vertical Depth	Reference	Offset	Highside Toolface	Offset Wellbore Centre		Between Centres	Between Ellipses	Total Uncertainty Axis	Separation Factor	Warning				
(ft)	(ft)	(ft)	(ft)	(ft)	(ft)	(°)	+N/-S (ft)	+E/-W (ft)	(ft)	(ft)							
0.0	0.0	0.0	0.0	0.0	0.0	45.43	45.5	46.2	64.9								
100.0	100.0	100.0	100.0	0.1	0.1	45.43	45.5	46.2	64.9	64.6	0.27	238.261					
200.0	200.0	200.0	200.0	0.3	0.3	45.43	45.5	46.2	64.9	64.3	0.62	104.407	CC, ES				
300.0	300.0	296.9	296.8	0.5	0.5	46.23	46.4	48.5	67.2	66.2	0.97	69.085					
400.0	400.0	393.5	393.1	0.7	0.7	-28.46	49.2	55.3	72.0	70.7	1.32	54.730					
500.0	499.6	489.7	488.6	0.9	1.0	-28.19	54.1	66.3	77.0	75.3	1.67	46.003					
600.0	598.8	585.6	583.0	1.1	1.3	-29.91	62.4	80.4	82.4	80.3	2.05	40.121					
700.0	697.1	681.0	676.1	1.5	1.7	-33.33	74.4	97.5	88.4	85.9	2.49	35.554					
800.0	794.3	775.8	767.6	1.9	2.2	-37.99	89.9	117.3	95.6	92.5	3.03	31.525	SF				

## Anticollision Report

<b>Company:</b>	EnCana Oil & Gas (USA) Inc	<b>Local Co-ordinate Reference:</b>	Well NP MF11G-3 O04 696 (was 14C-3)
<b>Project:</b>	North Piceance	<b>TVD Reference:</b>	WELL @ 6044.0ft (Original Well Elev)
<b>Reference Site:</b>	O04 696 (3rd)	<b>MD Reference:</b>	WELL @ 6044.0ft (Original Well Elev)
<b>Site Error:</b>	0.0ft	<b>North Reference:</b>	True
<b>Reference Well:</b>	NP MF11G-3 O04 696 (was 14C-3)	<b>Survey Calculation Method:</b>	Minimum Curvature
<b>Well Error:</b>	0.0ft	<b>Output errors are at</b>	2.00 sigma
<b>Reference Wellbore</b>	DD	<b>Database:</b>	USA EDM 5000 US Multi Users DB
<b>Reference Design:</b>	Plan #2	<b>Offset TVD Reference:</b>	Offset Datum

<b>Offset Design</b> O04 696 (3rd) - NP MF08B-9 O04 696 (was 01B-9) - DD - Plan #2													<b>Offset Site Error:</b> 0.0 ft
Survey Program: 0-MWD													<b>Offset Well Error:</b> 0.0 ft
Reference		Offset		Semi Major Axis		Distance							
Measured Depth (ft)	Vertical Depth (ft)	Measured Depth (ft)	Vertical Depth (ft)	Reference (ft)	Offset (ft)	Highside Toolface (°)	Offset Wellbore Centre +N/-S (ft)	+E/-W (ft)	Between Centres (ft)	Between Ellipses (ft)	Total Uncertainty Axis	Separation Factor	Warning
0.0	0.0	0.0	0.0	0.0	0.0	-147.83	-64.8	-40.7	76.5				
100.0	100.0	100.0	100.0	0.1	0.1	-147.83	-64.8	-40.7	76.5	76.2	0.27	280.968	
200.0	200.0	200.0	200.0	0.3	0.3	-147.83	-64.8	-40.7	76.5	75.9	0.62	123.121 CC, ES	
300.0	300.0	297.2	297.1	0.5	0.5	-149.12	-67.2	-40.2	78.3	77.3	0.97	80.913	
400.0	400.0	393.8	393.5	0.7	0.7	132.57	-74.3	-38.5	85.7	84.4	1.33	64.227 SF	

## Anticollision Report

<b>Company:</b>	EnCana Oil & Gas (USA) Inc	<b>Local Co-ordinate Reference:</b>	Well NP MF11G-3 O04 696 (was 14C-3)
<b>Project:</b>	North Piceance	<b>TVD Reference:</b>	WELL @ 6044.0ft (Original Well Elev)
<b>Reference Site:</b>	O04 696 (3rd)	<b>MD Reference:</b>	WELL @ 6044.0ft (Original Well Elev)
<b>Site Error:</b>	0.0ft	<b>North Reference:</b>	True
<b>Reference Well:</b>	NP MF11G-3 O04 696 (was 14C-3)	<b>Survey Calculation Method:</b>	Minimum Curvature
<b>Well Error:</b>	0.0ft	<b>Output errors are at</b>	2.00 sigma
<b>Reference Wellbore</b>	DD	<b>Database:</b>	USA EDM 5000 US Multi Users DB
<b>Reference Design:</b>	Plan #2	<b>Offset TVD Reference:</b>	Offset Datum

Offset Design													O04 696 (3rd) - NP MF11A-3 O04 696 (was 12C-3) - DD - Plan #2		Offset Site Error:		0.0 ft	
Survey Program:													0-MWD		Offset Well Error:		0.0 ft	
Reference		Offset		Semi Major Axis			Distance							Warning				
Measured Depth (ft)	Vertical Depth (ft)	Measured Depth (ft)	Vertical Depth (ft)	Reference (ft)	Offset (ft)	Highside Toolface (°)	Offset Wellbore Centre +N/-S (ft) +E/-W (ft)		Between Centres (ft)	Between Ellipses (ft)	Total Uncertainty Axis	Separation Factor						
0.0	0.0	0.0	0.0	0.0	0.0	45.91	39.5	40.7	56.7									
100.0	100.0	100.0	100.0	0.1	0.1	45.91	39.5	40.7	56.7	56.4	0.27	208.287						
200.0	200.0	200.0	200.0	0.3	0.3	45.91	39.5	40.7	56.7	56.1	0.62	91.272						
300.0	300.0	300.0	300.0	0.5	0.5	45.91	39.5	40.7	56.7	55.7	0.97	58.440 CC						
400.0	400.0	397.1	397.1	0.7	0.7	-31.55	41.4	42.3	57.0	55.7	1.32	43.324 ES						
500.0	499.6	494.1	493.7	0.9	0.9	-36.02	47.0	47.1	58.1	56.4	1.67	34.753						
600.0	598.8	590.8	589.6	1.1	1.1	-42.98	56.4	54.9	60.7	58.6	2.07	29.346						
700.0	697.1	687.0	684.4	1.5	1.4	-51.51	69.4	65.9	65.7	63.1	2.57	25.591						
800.0	794.3	782.8	777.7	1.9	1.9	-60.40	86.0	79.7	74.0	70.7	3.25	22.764						
900.0	890.2	877.9	869.1	2.5	2.3	-68.57	105.9	96.5	86.0	81.9	4.16	20.658 SF						

## Anticollision Report

<b>Company:</b>	EnCana Oil & Gas (USA) Inc	<b>Local Co-ordinate Reference:</b>	Well NP MF11G-3 O04 696 (was 14C-3)
<b>Project:</b>	North Piceance	<b>TVD Reference:</b>	WELL @ 6044.0ft (Original Well Elev)
<b>Reference Site:</b>	O04 696 (3rd)	<b>MD Reference:</b>	WELL @ 6044.0ft (Original Well Elev)
<b>Site Error:</b>	0.0ft	<b>North Reference:</b>	True
<b>Reference Well:</b>	NP MF11G-3 O04 696 (was 14C-3)	<b>Survey Calculation Method:</b>	Minimum Curvature
<b>Well Error:</b>	0.0ft	<b>Output errors are at</b>	2.00 sigma
<b>Reference Wellbore</b>	DD	<b>Database:</b>	USA EDM 5000 US Multi Users DB
<b>Reference Design:</b>	Plan #2	<b>Offset TVD Reference:</b>	Offset Datum

Offset Design O04 696 (3rd) - NP MF11B-3 O04 696 (was 14A-3) - DD - Plan #2												Offset Site Error:	0.0 ft
Survey Program: 0-MWD												Offset Well Error:	0.0 ft
Reference		Offset		Semi Major Axis			Distance					Warning	
Measured Depth (ft)	Vertical Depth (ft)	Measured Depth (ft)	Vertical Depth (ft)	Reference (ft)	Offset (ft)	Highside Toolface (°)	Offset Wellbore Centre +N/-S (ft)	+E/-W (ft)	Between Centres (ft)	Between Ellipses (ft)	Total Uncertainty Axis		Separation Factor
0.0	0.0	0.0	0.0	0.0	0.0	50.47	23.3	28.2	36.6				
100.0	100.0	100.0	100.0	0.1	0.1	50.47	23.3	28.2	36.6	36.3	0.27	134.281	
200.0	200.0	200.0	200.0	0.3	0.3	50.47	23.3	28.2	36.6	35.9	0.62	58.842	CC, ES
300.0	300.0	298.0	298.0	0.5	0.5	50.66	24.8	30.2	39.1	38.1	0.97	40.128	
400.0	400.0	395.8	395.4	0.7	0.7	-26.13	29.2	36.3	44.4	43.1	1.31	33.840	
500.0	499.6	493.2	492.0	0.9	1.0	-28.97	36.6	46.3	50.2	48.6	1.67	30.112	
600.0	598.8	590.2	587.5	1.1	1.3	-33.07	46.9	60.1	56.7	54.7	2.06	27.594	
700.0	697.1	686.8	681.5	1.5	1.8	-37.87	60.0	77.8	64.2	61.6	2.52	25.447	
800.0	794.3	783.0	773.9	1.9	2.3	-42.92	75.8	99.2	72.9	69.7	3.13	23.270	
900.0	890.2	878.6	864.4	2.5	2.9	-47.89	94.2	124.1	83.0	79.1	3.94	21.051	
1,000.0	984.4	973.8	952.8	3.1	3.5	-52.57	115.2	152.5	94.8	89.8	5.00	18.978	SF

# Anticollision Report

<b>Company:</b>	EnCana Oil & Gas (USA) Inc	<b>Local Co-ordinate Reference:</b>	Well NP MF11G-3 O04 696 (was 14C-3)
<b>Project:</b>	North Piceance	<b>TVD Reference:</b>	WELL @ 6044.0ft (Original Well Elev)
<b>Reference Site:</b>	O04 696 (3rd)	<b>MD Reference:</b>	WELL @ 6044.0ft (Original Well Elev)
<b>Site Error:</b>	0.0ft	<b>North Reference:</b>	True
<b>Reference Well:</b>	NP MF11G-3 O04 696 (was 14C-3)	<b>Survey Calculation Method:</b>	Minimum Curvature
<b>Well Error:</b>	0.0ft	<b>Output errors are at</b>	2.00 sigma
<b>Reference Wellbore</b>	DD	<b>Database:</b>	USA EDM 5000 US Multi Users DB
<b>Reference Design:</b>	Plan #2	<b>Offset TVD Reference:</b>	Offset Datum

Offset Design												O04 696 (3rd) - NP MF11D-3 O04 696 (was 14B-3) - DD - Plan #2		Offset Site Error:		0.0 ft	
Survey Program:												0-MWD		Offset Well Error:		0.0 ft	
Reference		Offset		Semi Major Axis			Distance										
Measured Depth	Vertical Depth	Measured Depth	Vertical Depth	Reference	Offset	Highside Toolface	Offset Wellbore Centre		Between Centres	Between Ellipses	Total Uncertainty Axis	Separation Factor	Warning				
(ft)	(ft)	(ft)	(ft)	(ft)	(ft)	(°)	+N/-S (ft)	+E/-W (ft)	(ft)	(ft)							
0.0	0.0	0.0	0.0	0.0	0.0	53.80	17.2	23.5	29.1								
100.0	100.0	100.0	100.0	0.1	0.1	53.80	17.2	23.5	29.1	28.8	0.27	106.956					
200.0	200.0	200.0	200.0	0.3	0.3	53.80	17.2	23.5	29.1	28.5	0.62	46.868	CC, ES				
300.0	300.0	298.4	298.4	0.5	0.5	54.30	18.5	25.7	31.7	30.7	0.98	32.468					
400.0	400.0	396.5	396.2	0.7	0.7	-21.84	22.2	32.3	36.9	35.6	1.31	28.092					
500.0	499.6	494.3	493.2	0.9	1.0	-23.84	28.5	43.1	42.4	40.8	1.67	25.450					
600.0	598.8	591.9	589.1	1.1	1.3	-26.96	37.1	58.2	48.3	46.3	2.05	23.636					
700.0	697.1	689.0	683.7	1.5	1.8	-30.73	48.2	77.5	54.7	52.3	2.48	22.058					
800.0	794.3	785.9	776.7	1.9	2.3	-34.84	61.6	100.8	61.8	58.8	3.03	20.394					
900.0	890.2	882.4	867.9	2.5	2.9	-39.03	77.2	128.1	69.8	66.0	3.76	18.576					
1,000.0	984.4	978.5	957.1	3.1	3.6	-43.15	95.1	159.2	78.6	73.9	4.70	16.731					
1,100.0	1,076.8	1,074.2	1,044.0	3.9	4.4	-47.06	115.1	194.0	88.5	82.6	5.89	15.025					
1,200.0	1,167.1	1,169.5	1,128.4	4.7	5.2	-50.70	137.1	232.4	99.5	92.2	7.34	13.556	SF				

# Anticollision Report

<b>Company:</b>	EnCana Oil & Gas (USA) Inc	<b>Local Co-ordinate Reference:</b>	Well NP MF11G-3 O04 696 (was 14C-3)
<b>Project:</b>	North Piceance	<b>TVD Reference:</b>	WELL @ 6044.0ft (Original Well Elev)
<b>Reference Site:</b>	O04 696 (3rd)	<b>MD Reference:</b>	WELL @ 6044.0ft (Original Well Elev)
<b>Site Error:</b>	0.0ft	<b>North Reference:</b>	True
<b>Reference Well:</b>	NP MF11G-3 O04 696 (was 14C-3)	<b>Survey Calculation Method:</b>	Minimum Curvature
<b>Well Error:</b>	0.0ft	<b>Output errors are at</b>	2.00 sigma
<b>Reference Wellbore</b>	DD	<b>Database:</b>	USA EDM 5000 US Multi Users DB
<b>Reference Design:</b>	Plan #2	<b>Offset TVD Reference:</b>	Offset Datum

<b>Offset Design</b> O04 696 (3rd) - NP MF11E-3 O04 696 (was 13A-3) - DD - Plan #2												<b>Offset Site Error:</b>	0.0 ft
Survey Program: 0-MWD												<b>Offset Well Error:</b>	0.0 ft
Reference		Offset		Semi Major Axis		Highside Toolface (°)	Offset Wellbore Centre		Distance		Total Uncertainty Axis	Separation Factor	Warning
Measured Depth (ft)	Vertical Depth (ft)	Measured Depth (ft)	Vertical Depth (ft)	Reference (ft)	Offset (ft)		+N/-S (ft)	+E/-W (ft)	Between Centres (ft)	Between Ellipses (ft)			
0.0	0.0	0.0	0.0	0.0	0.0	37.75	6.1	4.7	7.7				
100.0	100.0	100.0	100.0	0.1	0.1	37.75	6.1	4.7	7.7	7.4	0.27	28.197	
200.0	200.0	200.0	200.0	0.3	0.3	37.75	6.1	4.7	7.7	7.1	0.62	12.356 CC, ES	
300.0	300.0	299.6	299.5	0.5	0.5	44.56	7.2	7.1	10.1	9.1	0.98	10.290	
400.0	400.0	398.8	398.4	0.7	0.7	-26.11	10.4	14.1	15.2	13.9	1.32	11.498	
500.0	499.6	497.7	496.5	0.9	1.0	-26.09	15.8	25.7	20.7	19.0	1.68	12.284	
600.0	598.8	596.4	593.6	1.1	1.4	-28.05	23.3	41.9	26.5	24.4	2.08	12.753	
700.0	697.1	694.8	689.3	1.5	1.8	-30.84	32.9	62.5	32.6	30.1	2.53	12.882	
800.0	794.3	792.8	783.3	1.9	2.3	-33.98	44.4	87.5	39.2	36.1	3.10	12.649	
900.0	890.2	890.6	875.6	2.5	3.0	-37.21	58.0	116.7	46.2	42.4	3.82	12.103	
1,000.0	984.4	988.0	965.8	3.1	3.7	-40.40	73.5	150.1	53.8	49.1	4.74	11.359	
1,100.0	1,076.8	1,085.1	1,053.8	3.9	4.5	-43.46	90.8	187.5	62.0	56.1	5.88	10.545	
1,200.0	1,167.1	1,181.9	1,139.2	4.7	5.4	-46.35	109.9	228.7	70.8	63.5	7.26	9.753	
1,300.0	1,254.9	1,280.8	1,224.9	5.6	6.3	-49.86	130.7	273.6	79.0	70.1	8.94	8.840	
1,400.0	1,341.8	1,380.4	1,311.0	6.6	7.3	-53.93	151.7	318.9	86.4	75.5	10.85	7.956	
1,500.0	1,428.6	1,480.0	1,397.2	7.5	8.2	-57.36	172.7	364.2	94.1	81.2	12.82	7.337 SF	

# Anticollision Report

<b>Company:</b>	EnCana Oil & Gas (USA) Inc	<b>Local Co-ordinate Reference:</b>	Well NP MF11G-3 O04 696 (was 14C-3)
<b>Project:</b>	North Piceance	<b>TVD Reference:</b>	WELL @ 6044.0ft (Original Well Elev)
<b>Reference Site:</b>	O04 696 (3rd)	<b>MD Reference:</b>	WELL @ 6044.0ft (Original Well Elev)
<b>Site Error:</b>	0.0ft	<b>North Reference:</b>	True
<b>Reference Well:</b>	NP MF11G-3 O04 696 (was 14C-3)	<b>Survey Calculation Method:</b>	Minimum Curvature
<b>Well Error:</b>	0.0ft	<b>Output errors are at</b>	2.00 sigma
<b>Reference Wellbore</b>	DD	<b>Database:</b>	USA EDM 5000 US Multi Users DB
<b>Reference Design:</b>	Plan #2	<b>Offset TVD Reference:</b>	Offset Datum

Offset Design O04 696 (3rd) - NP MF14A-3 O04 696 (was 13B-3) - DD - Plan #2													Offset Site Error:	0.0 ft
Survey Program: 0-MWD													Offset Well Error:	0.0 ft
Reference		Offset		Semi Major Axis			Distance							Warning
Measured Depth	Vertical Depth	Measured Depth	Vertical Depth	Reference	Offset	Highside Toolface	Offset Wellbore Centre		Between Centres	Between Ellipses	Total Uncertainty Axis	Separation Factor		
(ft)	(ft)	(ft)	(ft)	(ft)	(ft)	(°)	+N/-S (ft)	+E/-W (ft)	(ft)	(ft)				
0.0	0.0	0.0	0.0	0.0	0.0	84.73	1.0	11.0	11.0					
100.0	100.0	100.0	100.0	0.1	0.1	84.73	1.0	11.0	11.0	10.7	0.27	40.447		
200.0	200.0	200.0	200.0	0.3	0.3	84.73	1.0	11.0	11.0	10.4	0.62	17.724 CC, ES		
300.0	300.0	299.3	299.3	0.5	0.5	83.89	1.4	13.5	13.6	12.6	0.98	13.928		
400.0	400.0	398.4	398.0	0.7	0.7	7.55	2.7	21.1	18.8	17.5	1.32	14.276		
500.0	499.6	497.1	495.9	0.9	1.0	8.26	4.9	33.7	24.0	22.3	1.66	14.410		
600.0	598.8	595.6	592.8	1.1	1.3	9.48	7.9	51.2	29.1	27.1	2.01	14.472		
700.0	697.1	693.9	688.4	1.5	1.8	10.97	11.7	73.6	34.2	31.9	2.37	14.458		
800.0	794.3	791.9	782.4	1.9	2.3	12.63	16.4	100.6	39.4	36.6	2.74	14.339		
900.0	890.2	889.6	874.7	2.5	3.0	14.40	21.8	132.4	44.5	41.3	3.16	14.075		
1,000.0	984.4	987.1	965.0	3.1	3.7	16.22	28.0	168.6	49.6	46.0	3.64	13.633		
1,100.0	1,076.8	1,084.4	1,053.1	3.9	4.5	18.09	34.9	209.2	54.7	50.5	4.21	13.001		
1,200.0	1,167.1	1,181.4	1,138.8	4.7	5.4	19.97	42.6	254.1	59.9	55.0	4.91	12.200		
1,300.0	1,254.9	1,278.3	1,221.9	5.6	6.4	21.87	51.0	303.1	65.1	59.3	5.76	11.294		
1,400.0	1,341.8	1,378.1	1,306.3	6.6	7.4	23.61	60.0	355.7	70.7	63.9	6.75	10.460		
1,500.0	1,428.6	1,477.9	1,390.7	7.5	8.5	25.09	69.0	408.2	76.3	68.5	7.82	9.762		
1,600.0	1,515.5	1,577.8	1,475.1	8.5	9.5	26.37	78.0	460.8	82.0	73.0	8.93	9.181		
1,700.0	1,602.4	1,677.6	1,559.5	9.5	10.6	27.49	87.0	513.3	87.7	77.6	10.08	8.698		
1,800.0	1,689.2	1,777.4	1,643.9	10.4	11.7	28.46	96.0	565.9	93.4	82.2	11.27	8.292		
1,900.0	1,776.1	1,877.2	1,728.3	11.4	12.7	29.32	105.0	618.4	99.2	86.7	12.48	7.949 SF		

# Anticollision Report

<b>Company:</b>	EnCana Oil & Gas (USA) Inc	<b>Local Co-ordinate Reference:</b>	Well NP MF11G-3 O04 696 (was 14C-3)
<b>Project:</b>	North Piceance	<b>TVD Reference:</b>	WELL @ 6044.0ft (Original Well Elev)
<b>Reference Site:</b>	O04 696 (3rd)	<b>MD Reference:</b>	WELL @ 6044.0ft (Original Well Elev)
<b>Site Error:</b>	0.0ft	<b>North Reference:</b>	True
<b>Reference Well:</b>	NP MF11G-3 O04 696 (was 14C-3)	<b>Survey Calculation Method:</b>	Minimum Curvature
<b>Well Error:</b>	0.0ft	<b>Output errors are at</b>	2.00 sigma
<b>Reference Wellbore</b>	DD	<b>Database:</b>	USA EDM 5000 US Multi Users DB
<b>Reference Design:</b>	Plan #2	<b>Offset TVD Reference:</b>	Offset Datum

Offset Design O04 696 (3rd) - NP MF14C-3 O04 696 (was 14D-3) - DD - Plan #2												Offset Site Error:	0.0 ft
Survey Program: 0-MWD												Offset Well Error:	0.0 ft
Reference		Offset		Semi Major Axis			Distance						Warning
Measured Depth (ft)	Vertical Depth (ft)	Measured Depth (ft)	Vertical Depth (ft)	Reference (ft)	Offset (ft)	Highside Toolface (°)	Offset Wellbore Centre +N/-S (ft)		Between Centres (ft)	Between Ellipses (ft)	Total Uncertainty Axis	Separation Factor	
0.0	0.0	0.0	0.0	0.0	0.0	128.92	-5.1	6.3	8.1				
100.0	100.0	100.0	100.0	0.1	0.1	128.92	-5.1	6.3	8.1	7.8	0.27	29.579	
200.0	200.0	200.0	200.0	0.3	0.3	128.92	-5.1	6.3	8.1	7.4	0.62	12.962	CC, ES
300.0	300.0	299.6	299.5	0.5	0.5	119.49	-5.0	8.9	10.2	9.2	0.97	10.463	
400.0	400.0	398.9	398.5	0.7	0.7	35.31	-4.9	16.6	15.2	13.9	1.33	11.435	
500.0	499.6	497.8	496.6	0.9	1.0	34.14	-4.6	29.4	20.8	19.1	1.70	12.234	
600.0	598.8	596.5	593.7	1.1	1.4	35.68	-4.3	47.3	26.9	24.8	2.12	12.715	
700.0	697.1	694.8	689.3	1.5	1.8	38.35	-3.9	70.0	33.6	31.0	2.62	12.817	
800.0	794.3	792.9	783.4	1.9	2.3	41.47	-3.4	97.5	40.9	37.6	3.26	12.544	
900.0	890.2	890.5	875.6	2.5	3.0	44.69	-2.8	129.7	48.9	44.8	4.08	11.986	
1,000.0	984.4	987.9	965.7	3.1	3.7	47.83	-2.1	166.5	57.6	52.5	5.11	11.282	
1,100.0	1,076.8	1,084.8	1,053.5	3.9	4.5	50.80	-1.4	207.6	67.2	60.8	6.37	10.552	
1,200.0	1,167.1	1,183.2	1,140.8	4.7	5.4	54.09	-0.6	252.9	76.9	69.0	7.88	9.749	
1,300.0	1,254.9	1,282.6	1,228.8	5.6	6.3	59.45	0.3	299.1	84.3	74.5	9.83	8.574	
1,400.0	1,341.8	1,382.0	1,316.8	6.6	7.1	65.25	1.1	345.2	91.5	79.5	11.97	7.643	
1,500.0	1,428.6	1,481.3	1,404.8	7.5	8.0	70.16	2.0	391.4	99.5	85.3	14.11	7.049	SF



# Anticollision Report

<b>Company:</b>	EnCana Oil & Gas (USA) Inc	<b>Local Co-ordinate Reference:</b>	Well NP MF11G-3 O04 696 (was 14C-3)
<b>Project:</b>	North Piceance	<b>TVD Reference:</b>	WELL @ 6044.0ft (Original Well Elev)
<b>Reference Site:</b>	O04 696 (3rd)	<b>MD Reference:</b>	WELL @ 6044.0ft (Original Well Elev)
<b>Site Error:</b>	0.0ft	<b>North Reference:</b>	True
<b>Reference Well:</b>	NP MF11G-3 O04 696 (was 14C-3)	<b>Survey Calculation Method:</b>	Minimum Curvature
<b>Well Error:</b>	0.0ft	<b>Output errors are at</b>	2.00 sigma
<b>Reference Wellbore</b>	DD	<b>Database:</b>	USA EDM 5000 US Multi Users DB
<b>Reference Design:</b>	Plan #2	<b>Offset TVD Reference:</b>	Offset Datum

<b>Offset Design</b> O04 696 (3rd) - NP MF14D-3 O04 696 (was 19A-3) - DD - Plan #2												<b>Offset Site Error:</b>	0.0 ft
Survey Program: 0-MWD												<b>Offset Well Error:</b>	0.0 ft
Reference		Offset		Semi Major Axis			Distance						Warning
Measured Depth (ft)	Vertical Depth (ft)	Measured Depth (ft)	Vertical Depth (ft)	Reference (ft)	Offset (ft)	Highside Toolface (°)	Offset Wellbore Centre +N/-S (ft)	+E/-W (ft)	Between Centres (ft)	Between Ellipses (ft)	Total Uncertainty Axis	Separation Factor	
0.0	0.0	0.0	0.0	0.0	0.0	-140.45	-15.2	-12.5	19.7				
100.0	100.0	100.0	100.0	0.1	0.1	-140.45	-15.2	-12.5	19.7	19.4	0.27	72.290	
200.0	200.0	200.0	200.0	0.3	0.3	-140.45	-15.2	-12.5	19.7	19.1	0.62	31.678	
300.0	300.0	300.0	300.0	0.5	0.5	-140.45	-15.2	-12.5	19.7	18.7	0.97	20.283 CC, ES	
400.0	400.0	400.6	400.5	0.7	0.7	141.87	-15.4	-9.9	20.3	19.0	1.33	15.297	
500.0	499.6	501.1	500.8	0.9	0.9	137.25	-16.1	-2.0	22.2	20.5	1.72	12.899	
600.0	598.8	601.6	600.3	1.1	1.2	131.15	-17.1	11.1	25.7	23.5	2.22	11.577	
700.0	697.1	701.9	698.9	1.5	1.5	125.01	-18.7	29.4	30.9	28.0	2.88	10.733	
800.0	794.3	802.0	796.3	1.9	2.0	119.65	-20.6	52.8	37.9	34.2	3.74	10.149	
900.0	890.2	901.9	892.0	2.5	2.5	115.29	-23.0	81.2	46.7	41.9	4.80	9.739	
1,000.0	984.4	1,001.6	985.9	3.1	3.1	111.84	-25.7	114.5	57.2	51.2	6.06	9.447	
1,100.0	1,076.8	1,101.0	1,077.7	3.9	3.9	109.12	-28.9	152.4	69.5	62.0	7.52	9.235	
1,200.0	1,167.1	1,200.0	1,167.1	4.7	4.7	106.96	-32.4	194.9	83.3	74.1	9.19	9.071	
1,300.0	1,254.9	1,298.8	1,254.1	5.6	5.6	105.43	-36.3	241.6	98.7	87.7	11.00	8.974 SF	

# Anticollision Report

<b>Company:</b>	EnCana Oil & Gas (USA) Inc	<b>Local Co-ordinate Reference:</b>	Well NP MF11G-3 O04 696 (was 14C-3)
<b>Project:</b>	North Piceance	<b>TVD Reference:</b>	WELL @ 6044.0ft (Original Well Elev)
<b>Reference Site:</b>	O04 696 (3rd)	<b>MD Reference:</b>	WELL @ 6044.0ft (Original Well Elev)
<b>Site Error:</b>	0.0ft	<b>North Reference:</b>	True
<b>Reference Well:</b>	NP MF11G-3 O04 696 (was 14C-3)	<b>Survey Calculation Method:</b>	Minimum Curvature
<b>Well Error:</b>	0.0ft	<b>Output errors are at</b>	2.00 sigma
<b>Reference Wellbore</b>	DD	<b>Database:</b>	USA EDM 5000 US Multi Users DB
<b>Reference Design:</b>	Plan #2	<b>Offset TVD Reference:</b>	Offset Datum

<b>Offset Design</b> O04 696 (3rd) - NP MF14E-3 O04 696 (was 19B-3) - DD - Plan #2													Offset Site Error:	0.0 ft
Survey Program: 0-MWD													Offset Well Error:	0.0 ft
Reference		Offset		Semi Major Axis			Distance					Separation Factor	Warning	
Measured Depth (ft)	Vertical Depth (ft)	Measured Depth (ft)	Vertical Depth (ft)	Reference (ft)	Offset (ft)	Highside Toolface (°)	Offset Wellbore Centre +N/-S (ft)	+E/-W (ft)	Between Centres (ft)	Between Ellipses (ft)	Total Uncertainty Axis			
0.0	0.0	0.0	0.0	0.0	0.0	-162.79	-20.2	-6.3	21.2					
100.0	100.0	100.0	100.0	0.1	0.1	-162.79	-20.2	-6.3	21.2	20.9	0.27	77.804		
200.0	200.0	200.0	200.0	0.3	0.3	-162.79	-20.2	-6.3	21.2	20.6	0.62	34.094		
253.2	253.2	253.2	253.2	0.4	0.4	-164.80	-20.4	-5.6	21.2	20.4	0.81	26.210 CC		
300.0	300.0	299.9	299.9	0.5	0.5	-169.86	-20.9	-3.7	21.3	20.3	0.97	21.899 ES		
400.0	400.0	399.5	399.2	0.7	0.7	100.94	-23.0	3.8	23.6	22.3	1.37	17.209		
500.0	499.6	498.7	497.5	0.9	1.0	91.73	-26.3	16.2	29.6	27.8	1.84	16.074		
600.0	598.8	597.4	594.6	1.1	1.4	86.90	-31.0	33.5	38.5	36.1	2.41	15.949		
700.0	697.1	695.5	690.0	1.5	1.8	84.86	-37.0	55.4	50.0	46.8	3.13	15.986		
800.0	794.3	792.9	783.5	1.9	2.3	84.30	-44.2	81.8	63.8	59.8	4.00	15.950		
900.0	890.2	889.6	874.7	2.5	3.0	84.46	-52.5	112.6	79.9	74.8	5.05	15.823		
1,000.0	984.4	985.5	963.6	3.1	3.7	84.94	-62.0	147.4	98.2	91.9	6.28	15.637 SF		

# Anticollision Report

<b>Company:</b>	EnCana Oil & Gas (USA) Inc	<b>Local Co-ordinate Reference:</b>	Well NP MF11G-3 O04 696 (was 14C-3)
<b>Project:</b>	North Piceance	<b>TVD Reference:</b>	WELL @ 6044.0ft (Original Well Elev)
<b>Reference Site:</b>	O04 696 (3rd)	<b>MD Reference:</b>	WELL @ 6044.0ft (Original Well Elev)
<b>Site Error:</b>	0.0ft	<b>North Reference:</b>	True
<b>Reference Well:</b>	NP MF11G-3 O04 696 (was 14C-3)	<b>Survey Calculation Method:</b>	Minimum Curvature
<b>Well Error:</b>	0.0ft	<b>Output errors are at</b>	2.00 sigma
<b>Reference Wellbore</b>	DD	<b>Database:</b>	USA EDM 5000 US Multi Users DB
<b>Reference Design:</b>	Plan #2	<b>Offset TVD Reference:</b>	Offset Datum

Offset Design												004 696 (3rd) - NP MF15A-4 004 696 (was 11D-3) - DD - Plan #2		Offset Site Error:		0.0 ft	
Survey Program: 0-MWD												Offset Well Error:		0.0 ft			
Reference		Offset		Semi Major Axis			Distance										
Measured Depth (ft)	Vertical Depth (ft)	Measured Depth (ft)	Vertical Depth (ft)	Reference (ft)	Offset (ft)	Highside Toolface (°)	Offset Wellbore Centre +N/-S (ft)	+E/-W (ft)	Between Centres (ft)	Between Ellipses (ft)	Total Uncertainty Axis	Separation Factor	Warning				
0.0	0.0	0.0	0.0	0.0	0.0	37.75	22.3	17.2	28.2								
100.0	100.0	100.0	100.0	0.1	0.1	37.75	22.3	17.2	28.2	27.9	0.27	103.390					
200.0	200.0	200.0	200.0	0.3	0.3	37.75	22.3	17.2	28.2	27.5	0.62	45.306	CC, ES				
300.0	300.0	299.1	299.0	0.5	0.5	33.74	24.7	16.5	29.8	28.8	0.97	30.659					
400.0	400.0	397.5	397.2	0.7	0.7	-55.10	32.1	14.4	33.7	32.4	1.34	25.170					
500.0	499.6	494.6	493.5	0.9	1.0	-74.09	44.0	10.9	42.0	40.2	1.72	24.450	SF				
600.0	598.8	589.7	587.0	1.1	1.3	-90.95	60.3	6.2	58.3	56.1	2.14	27.228					
700.0	697.1	683.1	678.1	1.5	1.7	-102.57	80.4	0.4	83.1	80.5	2.66	31.296					

## Anticollision Report

<b>Company:</b>	EnCana Oil & Gas (USA) Inc	<b>Local Co-ordinate Reference:</b>	Well NP MF11G-3 O04 696 (was 14C-3)
<b>Project:</b>	North Piceance	<b>TVD Reference:</b>	WELL @ 6044.0ft (Original Well Elev)
<b>Reference Site:</b>	O04 696 (3rd)	<b>MD Reference:</b>	WELL @ 6044.0ft (Original Well Elev)
<b>Site Error:</b>	0.0ft	<b>North Reference:</b>	True
<b>Reference Well:</b>	NP MF11G-3 O04 696 (was 14C-3)	<b>Survey Calculation Method:</b>	Minimum Curvature
<b>Well Error:</b>	0.0ft	<b>Output errors are at</b>	2.00 sigma
<b>Reference Wellbore</b>	DD	<b>Database:</b>	USA EDM 5000 US Multi Users DB
<b>Reference Design:</b>	Plan #2	<b>Offset TVD Reference:</b>	Offset Datum

Offset Design													O04 696 (3rd) - NP MF15D-4 O04 696 (was 01B-9) - DD - Plan #2		Offset Site Error:		0.0 ft	
Survey Program: 0-MWD															Offset Well Error:		0.0 ft	
Reference		Offset		Semi Major Axis			Distance											
Measured Depth	Vertical Depth	Measured Depth	Vertical Depth	Reference	Offset	Highside Toolface	Offset Wellbore Centre +N/-S	+E/-W	Between Centres	Between Ellipses	Total Uncertainty Axis	Separation Factor	Warning					
(ft)	(ft)	(ft)	(ft)	(ft)	(ft)	(°)	(ft)	(ft)	(ft)	(ft)								
0.0	0.0	0.0	0.0	0.0	0.0	-141.79	-59.7	-47.0	76.0									
100.0	100.0	100.0	100.0	0.1	0.1	-141.79	-59.7	-47.0	76.0	75.7	0.27	279.044						
200.0	200.0	200.0	200.0	0.3	0.3	-141.79	-59.7	-47.0	76.0	75.4	0.62	122.278						
300.0	300.0	300.0	300.0	0.5	0.5	-141.79	-59.7	-47.0	76.0	75.0	0.97	78.293 CC, ES						
400.0	400.0	398.7	398.7	0.7	0.7	144.49	-59.3	-48.7	78.9	77.5	1.32	59.706						
500.0	499.6	496.5	496.3	0.9	0.8	150.17	-58.2	-53.6	88.1	86.4	1.68	52.386 SF						

## Anticollision Report

<b>Company:</b>	EnCana Oil & Gas (USA) Inc	<b>Local Co-ordinate Reference:</b>	Well NP MF11G-3 O04 696 (was 14C-3)
<b>Project:</b>	North Piceance	<b>TVD Reference:</b>	WELL @ 6044.0ft (Original Well Elev)
<b>Reference Site:</b>	O04 696 (3rd)	<b>MD Reference:</b>	WELL @ 6044.0ft (Original Well Elev)
<b>Site Error:</b>	0.0ft	<b>North Reference:</b>	True
<b>Reference Well:</b>	NP MF11G-3 O04 696 (was 14C-3)	<b>Survey Calculation Method:</b>	Minimum Curvature
<b>Well Error:</b>	0.0ft	<b>Output errors are at</b>	2.00 sigma
<b>Reference Wellbore</b>	DD	<b>Database:</b>	USA EDM 5000 US Multi Users DB
<b>Reference Design:</b>	Plan #2	<b>Offset TVD Reference:</b>	Offset Datum

Offset Design													Offset Site Error:		0.0 ft
Survey Program: 0-MWD													Offset Well Error:		0.0 ft
Reference		Offset		Semi Major Axis				Distance					Warning		
Measured Depth	Vertical Depth	Measured Depth	Vertical Depth	Reference	Offset	Highside Toolface	Offset Wellbore Centre	Between Centres	Between Ellipses	Total Uncertainty	Separation Factor				
Depth (ft)	Depth (ft)	Depth (ft)	Depth (ft)	(ft)	(ft)	(°)	+N/-S (ft)	+E/-W (ft)	(ft)	(ft)	Axis				
0.0	0.0	0.0	0.0	0.0	0.0	-147.32	-70.8	-45.4	84.1						
100.0	100.0	100.0	100.0	0.1	0.1	-147.32	-70.8	-45.4	84.1	83.9	0.27	309.044			
200.0	200.0	200.0	200.0	0.3	0.3	-147.32	-70.8	-45.4	84.1	83.5	0.62	135.424 CC, ES			
300.0	300.0	296.3	296.2	0.5	0.5	-148.16	-73.3	-45.5	86.3	85.3	0.97	89.150			
400.0	400.0	392.0	391.7	0.7	0.7	134.57	-80.5	-45.7	94.7	93.4	1.32	71.734 SF			

# Anticollision Report

<b>Company:</b>	EnCana Oil & Gas (USA) Inc	<b>Local Co-ordinate Reference:</b>	Well NP MF11G-3 O04 696 (was 14C-3)
<b>Project:</b>	North Piceance	<b>TVD Reference:</b>	WELL @ 6044.0ft (Original Well Elev)
<b>Reference Site:</b>	O04 696 (3rd)	<b>MD Reference:</b>	WELL @ 6044.0ft (Original Well Elev)
<b>Site Error:</b>	0.0ft	<b>North Reference:</b>	True
<b>Reference Well:</b>	NP MF11G-3 O04 696 (was 14C-3)	<b>Survey Calculation Method:</b>	Minimum Curvature
<b>Well Error:</b>	0.0ft	<b>Output errors are at</b>	2.00 sigma
<b>Reference Wellbore</b>	DD	<b>Database:</b>	USA EDM 5000 US Multi Users DB
<b>Reference Design:</b>	Plan #2	<b>Offset TVD Reference:</b>	Offset Datum

Offset Design O04 696 (3rd) - NP MF19A-3 O04 696 (was 17B-4) - DD - Plan #2												Offset Site Error:	0.0 ft
Survey Program: 0-MWD												Offset Well Error:	0.0 ft
Reference		Offset		Semi Major Axis			Distance						Warning
Measured Depth Depth (ft)	Vertical Depth (ft)	Measured Depth (ft)	Vertical Depth (ft)	Reference (ft)	Offset (ft)	Highside Toolface (°)	Offset Wellbore Centre +N/-S (ft)	+E/-W (ft)	Between Centres (ft)	Between Ellipses (ft)	Total Uncertainty Axis	Separation Factor	
0.0	0.0	0.0	0.0	0.0	0.0	-142.25	-22.3	-17.2	28.2				
100.0	100.0	100.0	100.0	0.1	0.1	-142.25	-22.3	-17.2	28.2	27.9	0.27	103.390	
200.0	200.0	200.0	200.0	0.3	0.3	-142.25	-22.3	-17.2	28.2	27.5	0.62	45.306	
300.0	300.0	300.2	300.2	0.5	0.5	-143.56	-22.5	-16.6	28.0	27.0	0.97	28.829	
319.9	319.9	320.2	320.1	0.5	0.5	139.39	-22.8	-16.0	27.9	26.9	1.04	26.737 CC, ES	
400.0	400.0	400.4	400.2	0.7	0.7	133.66	-24.6	-11.8	29.0	27.6	1.34	21.596	
500.0	499.6	500.2	499.5	0.9	0.9	125.44	-28.6	-2.1	33.5	31.7	1.78	18.790	
600.0	598.8	599.6	597.7	1.1	1.2	118.32	-34.7	12.2	41.8	39.4	2.34	17.824	
700.0	697.1	698.4	694.3	1.5	1.6	113.17	-42.6	31.0	53.7	50.6	3.05	17.587 SF	
800.0	794.3	796.3	788.9	1.9	2.1	109.69	-52.4	54.3	69.0	65.1	3.92	17.597	
900.0	890.2	893.4	881.3	2.5	2.7	107.35	-64.0	81.7	87.6	82.7	4.96	17.667	

# Anticollision Report

<b>Company:</b>	EnCana Oil & Gas (USA) Inc	<b>Local Co-ordinate Reference:</b>	Well NP MF11G-3 O04 696 (was 14C-3)
<b>Project:</b>	North Piceance	<b>TVD Reference:</b>	WELL @ 6044.0ft (Original Well Elev)
<b>Reference Site:</b>	O04 696 (3rd)	<b>MD Reference:</b>	WELL @ 6044.0ft (Original Well Elev)
<b>Site Error:</b>	0.0ft	<b>North Reference:</b>	True
<b>Reference Well:</b>	NP MF11G-3 O04 696 (was 14C-3)	<b>Survey Calculation Method:</b>	Minimum Curvature
<b>Well Error:</b>	0.0ft	<b>Output errors are at</b>	2.00 sigma
<b>Reference Wellbore</b>	DD	<b>Database:</b>	USA EDM 5000 US Multi Users DB
<b>Reference Design:</b>	Plan #2	<b>Offset TVD Reference:</b>	Offset Datum

Offset Design													O04 696 (3rd) - NP MF19C-3 O04 696 (was 20B-3) - DD - Plan #2		Offset Site Error:		0.0 ft
Survey Program:													0-MWD		Offset Well Error:		0.0 ft
Reference		Offset		Semi Major Axis			Distance							Warning			
Measured Depth Depth (ft)	Vertical Depth (ft)	Measured Depth (ft)	Vertical Depth (ft)	Reference (ft)	Offset (ft)	Highside Toolface (°)	Offset Wellbore Centre +N/-S (ft)	+E/-W (ft)	Between Centres (ft)	Between Ellipses (ft)	Total Uncertainty Axis	Separation Factor					
0.0	0.0	0.0	0.0	0.0	0.0	-158.13	-27.3	-11.0	29.4								
100.0	100.0	100.0	100.0	0.1	0.1	-158.13	-27.3	-11.0	29.4	29.2	0.27	108.117					
200.0	200.0	200.0	200.0	0.3	0.3	-158.13	-27.3	-11.0	29.4	28.8	0.62	47.377	CC, ES				
300.0	300.0	299.7	299.6	0.5	0.5	-163.06	-28.6	-8.7	29.9	29.0	0.97	30.866					
400.0	400.0	399.0	398.6	0.7	0.7	111.77	-32.6	-2.0	33.5	32.2	1.37	24.490					
500.0	499.6	497.7	496.5	0.9	1.0	105.13	-39.0	9.0	41.7	39.9	1.83	22.787					
600.0	598.8	595.6	592.8	1.1	1.3	101.41	-48.0	24.2	54.0	51.7	2.40	22.549	SF				
700.0	697.1	692.6	687.1	1.5	1.8	99.64	-59.3	43.5	70.2	67.1	3.10	22.673					
800.0	794.3	788.3	779.1	1.9	2.3	98.93	-72.8	66.6	90.0	86.1	3.95	22.805					

## Anticollision Report

<b>Company:</b>	EnCana Oil & Gas (USA) Inc	<b>Local Co-ordinate Reference:</b>	Well NP MF11G-3 O04 696 (was 14C-3)
<b>Project:</b>	North Piceance	<b>TVD Reference:</b>	WELL @ 6044.0ft (Original Well Elev)
<b>Reference Site:</b>	O04 696 (3rd)	<b>MD Reference:</b>	WELL @ 6044.0ft (Original Well Elev)
<b>Site Error:</b>	0.0ft	<b>North Reference:</b>	True
<b>Reference Well:</b>	NP MF11G-3 O04 696 (was 14C-3)	<b>Survey Calculation Method:</b>	Minimum Curvature
<b>Well Error:</b>	0.0ft	<b>Output errors are at</b>	2.00 sigma
<b>Reference Wellbore</b>	DD	<b>Database:</b>	USA EDM 5000 US Multi Users DB
<b>Reference Design:</b>	Plan #2	<b>Offset TVD Reference:</b>	Offset Datum

<b>Offset Design</b> O04 696 (3rd) - NP MF19D-3 O04 696 (was 19C-3) - DD - Plan #2													<b>Offset Site Error:</b> 0.0 ft
Survey Program: 0-MWD													<b>Offset Well Error:</b> 0.0 ft
Reference		Offset		Semi Major Axis			Distance						Warning
Measured Depth (ft)	Vertical Depth (ft)	Measured Depth (ft)	Vertical Depth (ft)	Reference (ft)	Offset (ft)	Highside Toolface (°)	Offset Wellbore Centre +N/-S (ft)	+E/-W (ft)	Between Centres (ft)	Between Ellipses (ft)	Total Uncertainty Axis	Separation Factor	
0.0	0.0	0.0	0.0	0.0	0.0	-141.51	-37.4	-29.8	47.8				
100.0	100.0	100.0	100.0	0.1	0.1	-141.51	-37.4	-29.8	47.8	47.6	0.27	175.659	
200.0	200.0	200.0	200.0	0.3	0.3	-141.51	-37.4	-29.8	47.8	47.2	0.62	76.974	
300.0	300.0	300.0	300.0	0.5	0.5	-141.51	-37.4	-29.8	47.8	46.9	0.97	49.286 CC, ES	
400.0	400.0	399.9	399.9	0.7	0.7	143.59	-37.9	-29.3	50.0	48.6	1.32	37.819	
500.0	499.6	499.5	499.3	0.9	0.8	142.92	-41.4	-25.5	56.6	54.9	1.70	33.378	
600.0	598.8	598.6	597.9	1.1	1.1	140.60	-48.4	-17.9	67.8	65.7	2.13	31.800	
700.0	697.1	697.7	695.8	1.5	1.4	137.60	-58.4	-6.3	83.0	80.3	2.68	30.954 SF	



# Anticollision Report

<b>Company:</b>	EnCana Oil & Gas (USA) Inc	<b>Local Co-ordinate Reference:</b>	Well NP MF11G-3 O04 696 (was 14C-3)
<b>Project:</b>	North Piceance	<b>TVD Reference:</b>	WELL @ 6044.0ft (Original Well Elev)
<b>Reference Site:</b>	O04 696 (3rd)	<b>MD Reference:</b>	WELL @ 6044.0ft (Original Well Elev)
<b>Site Error:</b>	0.0ft	<b>North Reference:</b>	True
<b>Reference Well:</b>	NP MF11G-3 O04 696 (was 14C-3)	<b>Survey Calculation Method:</b>	Minimum Curvature
<b>Well Error:</b>	0.0ft	<b>Output errors are at</b>	2.00 sigma
<b>Reference Wellbore</b>	DD	<b>Database:</b>	USA EDM 5000 US Multi Users DB
<b>Reference Design:</b>	Plan #2	<b>Offset TVD Reference:</b>	Offset Datum

<b>Offset Design</b> O04 696 (3rd) - NP MF19E-3 O04 696 (was 19D-3) - DD - Plan #2													Offset Site Error:	0.0 ft
Survey Program: 0-MWD													Offset Well Error:	0.0 ft
Reference	Offset		Semi Major Axis		Distance		Total		Separation		Warning			
Measured Depth (ft)	Vertical Depth (ft)	Measured Depth (ft)	Vertical Depth (ft)	Reference (ft)	Offset (ft)	Highside Toolface (°)	Offset Wellbore Centre +N/-S (ft)	+E/-W (ft)	Between Centres (ft)	Between Ellipses (ft)	Uncertainty Axis	Factor		
0.0	0.0	0.0	0.0	0.0	0.0	-151.06	-42.5	-23.5	48.6					
100.0	100.0	100.0	100.0	0.1	0.1	-151.06	-42.5	-23.5	48.6	48.3	0.27	178.350		
200.0	200.0	200.0	200.0	0.3	0.3	-151.06	-42.5	-23.5	48.6	47.9	0.62	78.153 CC, ES		
300.0	300.0	299.5	299.5	0.5	0.5	-154.06	-44.1	-21.4	49.0	48.0	0.97	50.537		
400.0	400.0	398.7	398.3	0.7	0.7	123.80	-48.7	-15.3	52.5	51.2	1.37	38.324		
500.0	499.6	497.1	495.9	0.9	1.0	118.14	-56.5	-5.1	61.1	59.2	1.83	33.288		
600.0	598.8	594.7	591.9	1.1	1.3	113.89	-67.1	8.8	74.4	72.0	2.40	31.009		
700.0	697.1	691.0	685.6	1.5	1.8	111.01	-80.5	26.5	92.4	89.3	3.09	29.873 SF		

## Anticollision Report

<b>Company:</b>	EnCana Oil & Gas (USA) Inc	<b>Local Co-ordinate Reference:</b>	Well NP MF11G-3 O04 696 (was 14C-3)
<b>Project:</b>	North Piceance	<b>TVD Reference:</b>	WELL @ 6044.0ft (Original Well Elev)
<b>Reference Site:</b>	O04 696 (3rd)	<b>MD Reference:</b>	WELL @ 6044.0ft (Original Well Elev)
<b>Site Error:</b>	0.0ft	<b>North Reference:</b>	True
<b>Reference Well:</b>	NP MF11G-3 O04 696 (was 14C-3)	<b>Survey Calculation Method:</b>	Minimum Curvature
<b>Well Error:</b>	0.0ft	<b>Output errors are at</b>	2.00 sigma
<b>Reference Wellbore</b>	DD	<b>Database:</b>	USA EDM 5000 US Multi Users DB
<b>Reference Design:</b>	Plan #2	<b>Offset TVD Reference:</b>	Offset Datum

<b>Offset Design</b> O04 696 (3rd) - NP MF20F-3 O04 696 (was 20D-3) - DD - Plan #2													<b>Offset Site Error:</b>	0.0 ft
Survey Program: 0-MWD													<b>Offset Well Error:</b>	0.0 ft
Reference		Offset		Semi Major Axis			Distance						Warning	
Measured Depth (ft)	Vertical Depth (ft)	Measured Depth (ft)	Vertical Depth (ft)	Reference (ft)	Offset (ft)	Highside Toolface (°)	Offset Wellbore Centre +N/-S (ft)	+E/-W (ft)	Between Centres (ft)	Between Ellipses (ft)	Total Uncertainty Axis	Separation Factor		
0.0	0.0	0.0	0.0	0.0	0.0	-149.86	-48.6	-28.2	56.2					
100.0	100.0	100.0	100.0	0.1	0.1	-149.86	-48.6	-28.2	56.2	55.9	0.27	206.260		
200.0	200.0	200.0	200.0	0.3	0.3	-149.86	-48.6	-28.2	56.2	55.5	0.62	90.384 CC, ES		
300.0	300.0	299.0	299.0	0.5	0.5	-152.32	-50.5	-26.5	57.0	56.0	0.97	58.825		
400.0	400.0	397.6	397.3	0.7	0.7	126.72	-56.1	-21.3	61.6	60.3	1.36	45.207		
500.0	499.6	495.4	494.2	0.9	1.0	122.23	-65.4	-12.8	71.9	70.1	1.81	39.691		
600.0	598.8	592.0	589.2	1.1	1.3	118.87	-78.2	-1.2	87.8	85.4	2.35	37.296 SF		

# Anticollision Report

<b>Company:</b>	EnCana Oil & Gas (USA) Inc	<b>Local Co-ordinate Reference:</b>	Well NP MF11G-3 O04 696 (was 14C-3)
<b>Project:</b>	North Piceance	<b>TVD Reference:</b>	WELL @ 6044.0ft (Original Well Elev)
<b>Reference Site:</b>	O04 696 (3rd)	<b>MD Reference:</b>	WELL @ 6044.0ft (Original Well Elev)
<b>Site Error:</b>	0.0ft	<b>North Reference:</b>	True
<b>Reference Well:</b>	NP MF11G-3 O04 696 (was 14C-3)	<b>Survey Calculation Method:</b>	Minimum Curvature
<b>Well Error:</b>	0.0ft	<b>Output errors are at</b>	2.00 sigma
<b>Reference Wellbore</b>	DD	<b>Database:</b>	USA EDM 5000 US Multi Users DB
<b>Reference Design:</b>	Plan #2	<b>Offset TVD Reference:</b>	Offset Datum

Reference Depths are relative to WELL @ 6044.0ft (Original Well Elev)

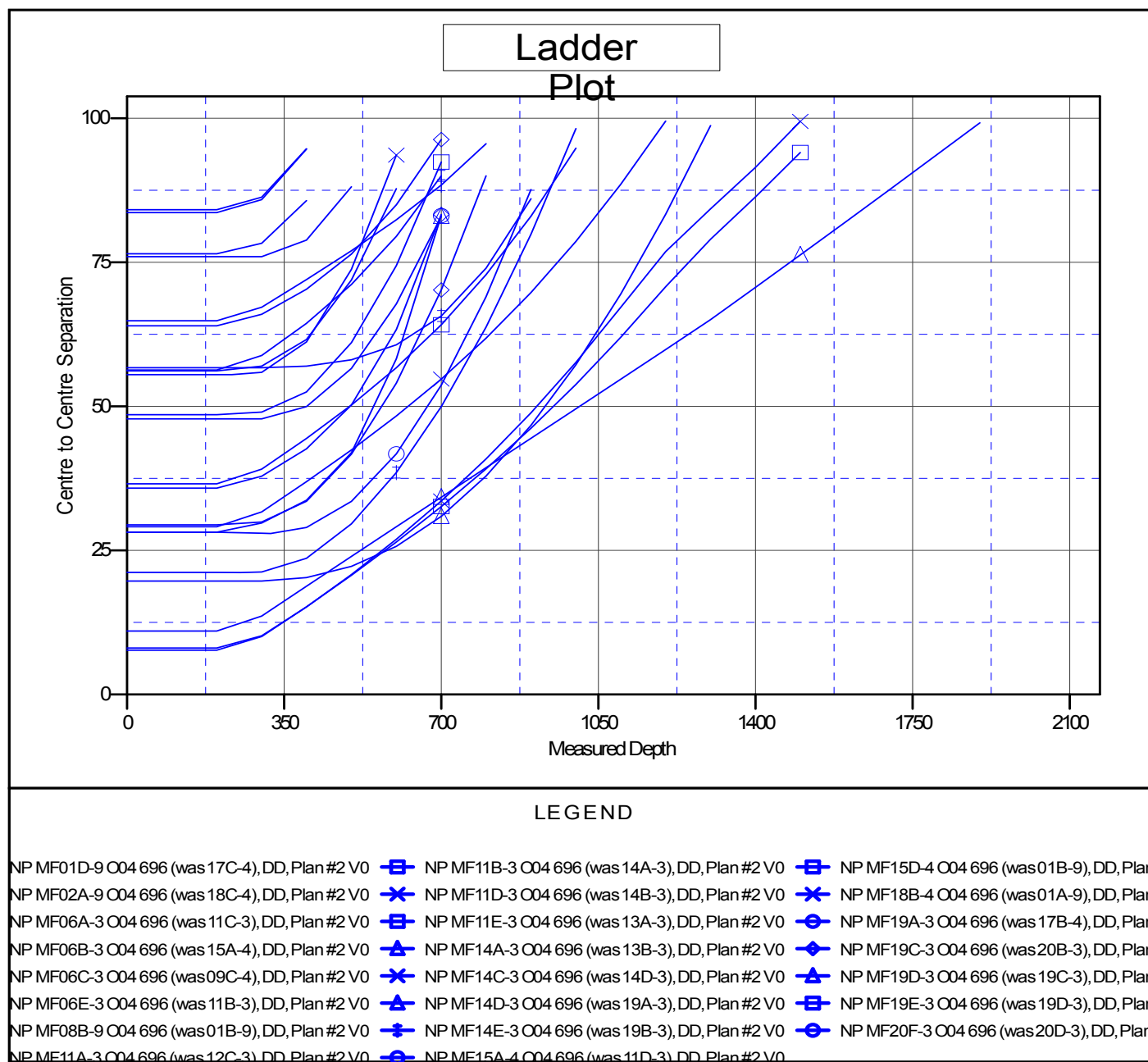
Offset Depths are relative to Offset Datum

Central Meridian is 105° 30' 0.00 W °

Coordinates are relative to: NP MF11G-3 O04 696 (was 14C-3)

Coordinate System is US State Plane 1983, Colorado Central Zone

Grid Convergence at Surface is: -1.64°



CC - Min centre to center distance or convergent point, SF - min separation factor, ES - min ellipse separation