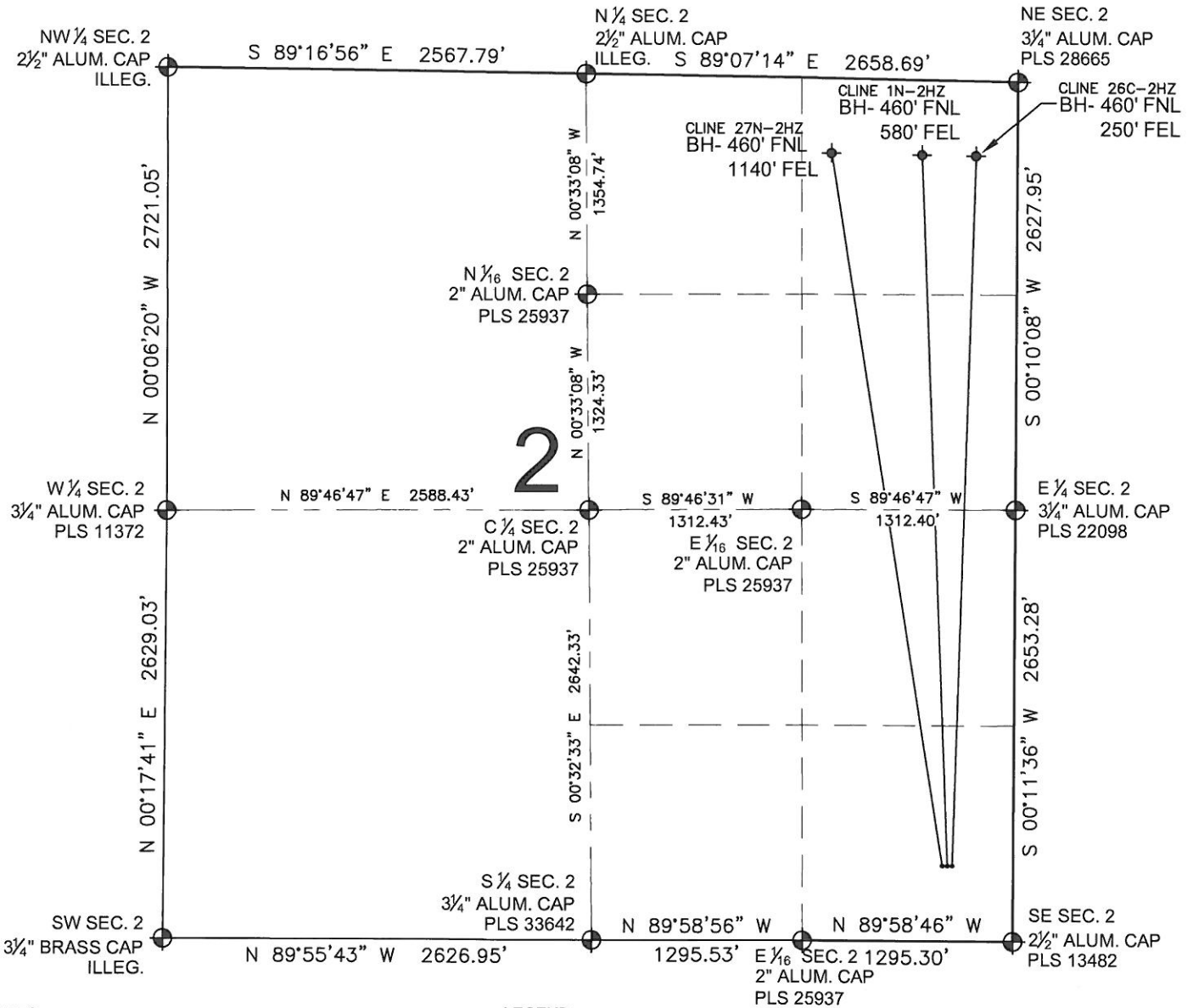


CLINE 27N-2HZ MULTI-WELL PLAN

SECTION 2, TOWNSHIP 2 NORTH, RANGE 67 WEST, 6TH P.M.



NOTES:

CLINE 27N-2HZ TO BE AT 464' FSL & 430' FEL.
BOTTOM HOLE AT 460' FNL, 1140' FEL.
CLINE 1N-2HZ TO BE AT 464' FSL & 400' FEL.
BOTTOM HOLE AT 460' FNL, 580' FEL.
CLINE 26C-2HZ TO BE AT 464' FSL & 370' FEL.
BOTTOM HOLE AT 460' FNL, 250' FEL.
HSR-SPERL 16-2A IS AT 464' FSL & 460' FEL.

LEGEND

⊕ = EXISTING MONUMENT ♦ = BOTTOM HOLE BH= BOTTOM HOLE
• = PROPOSED WELL ◆ = EXISTING WELL

PREPARED BY:

PFS

Petroleum Field Services, LLC
1801 W. 13th Ave.
Denver, CO 80204

KERR-MCGEE OIL & GAS ONSHORE LP

FIELD DATE:
03-15-13

DRAWING DATE:
03-20-13

SURFACE LOCATION:

SE 1/4 SE 1/4, SEC. 2, T2N, R67W, 6TH P.M.
WELD COUNTY, COLORADO

