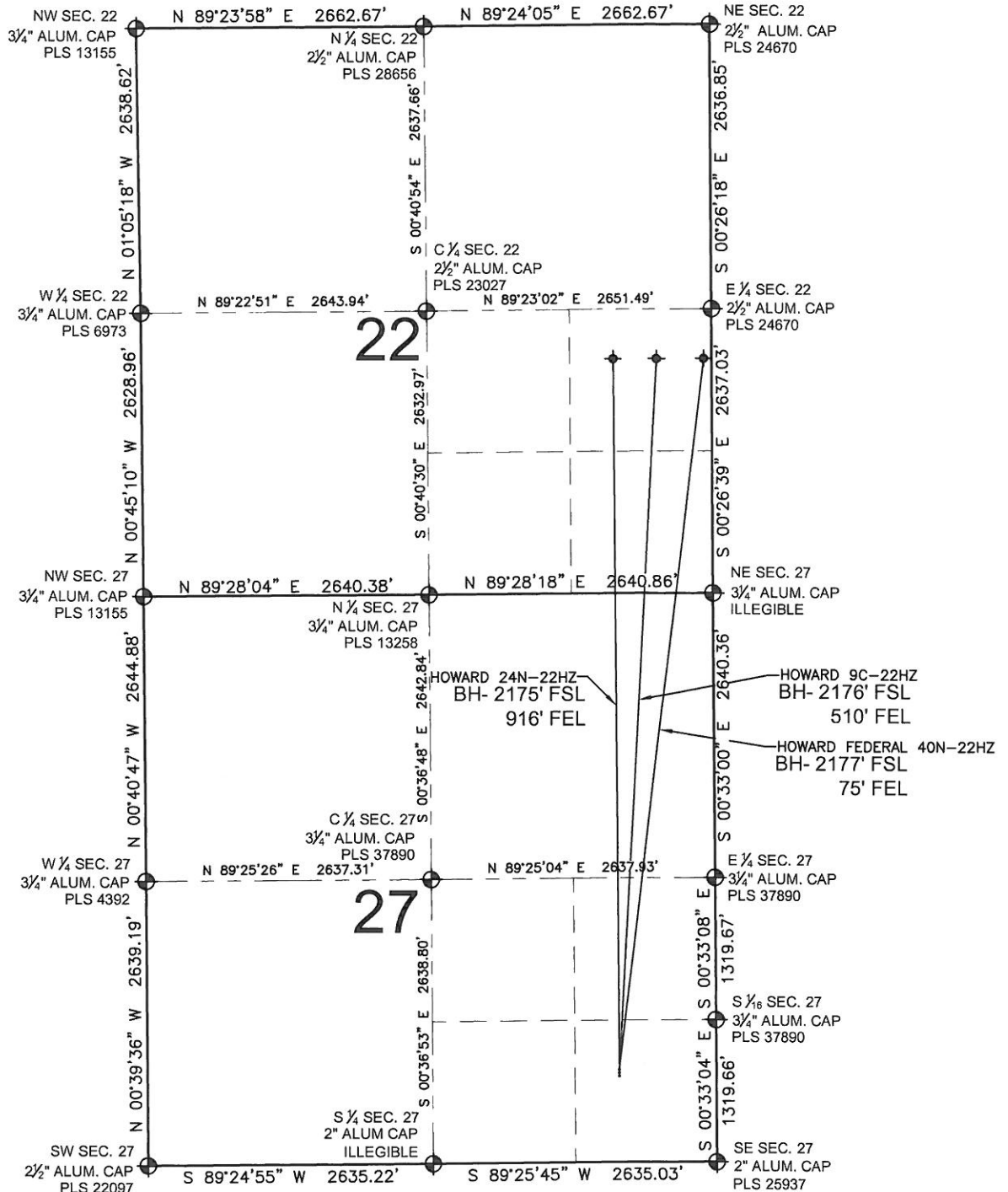


HOWARD 9C-22HZ MULTI-WELL PLAN

SECTION 27, TOWNSHIP 1 NORTH, RANGE 67 WEST, 6TH P.M.



LEGEND

- ⊕ = EXISTING MONUMENT
- = PROPOSED WELL
- ⬮ = BOTTOM HOLE
- BH = BOTTOM HOLE

NOTES:

HOWARD 24N-22HZ TO BE AT 800' FSL, 905' FEL.
 BOTTOM HOLE AT 2175' FSL & 916' FEL, SEC 22
 HOWARD 9C-22HZ TO BE AT 830' FSL, 905' FEL.
 BOTTOM HOLE AT 2176' FSL & 510' FEL, SEC 22
 HOWARD FEDERAL 40N-22HZ TO BE AT 860' FSL, 906' FEL.
 BOTTOM HOLE AT 2177' FSL & 75' FEL, SEC 22

PREPARED BY:

PFS

Petroleum Field Services, LLC
 1801 W. 13th Ave.
 Denver, CO 80204



KERR-MCGEE OIL & GAS ONSHORE LP

FIELD DATE:
04-17-13

DRAWING DATE:
05-28-13

SURFACE LOCATION:

SE 1/4 SE 1/4, SEC. 27, T1N, R67W, 6TH P.M.
 WELD COUNTY, COLORADO