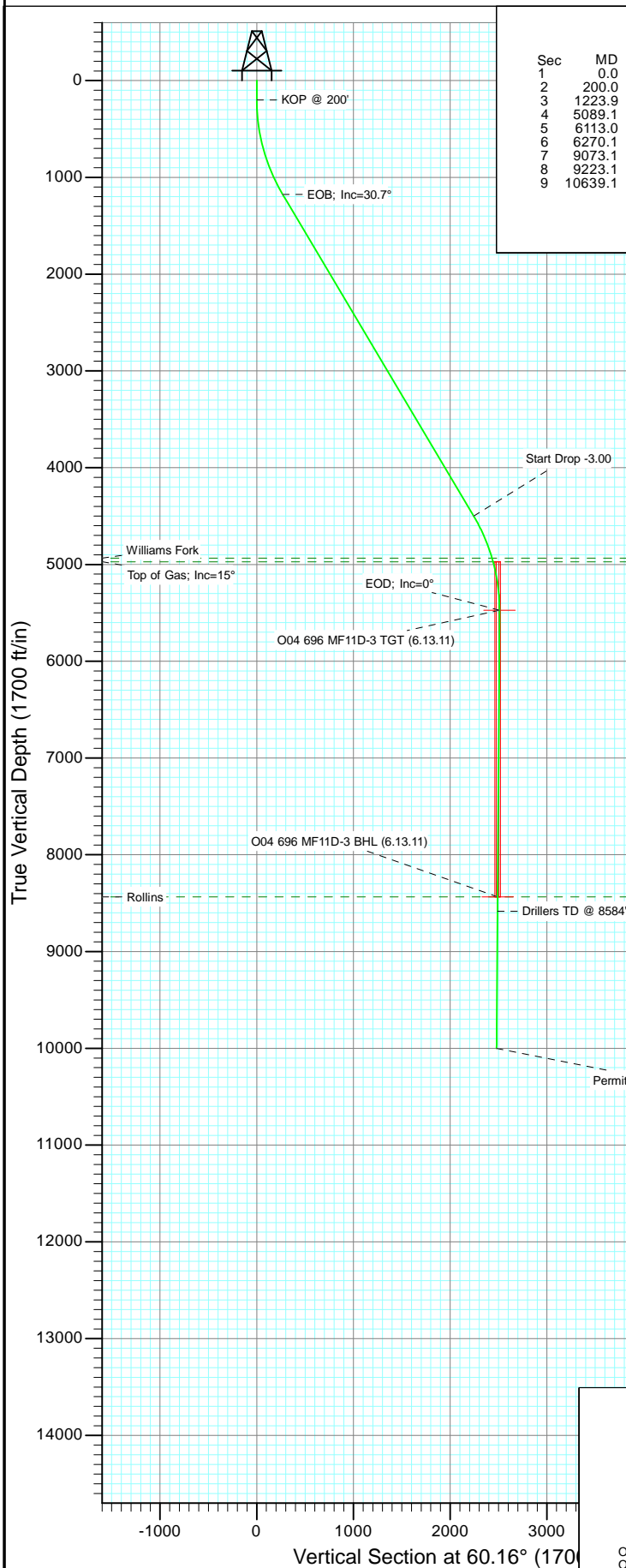
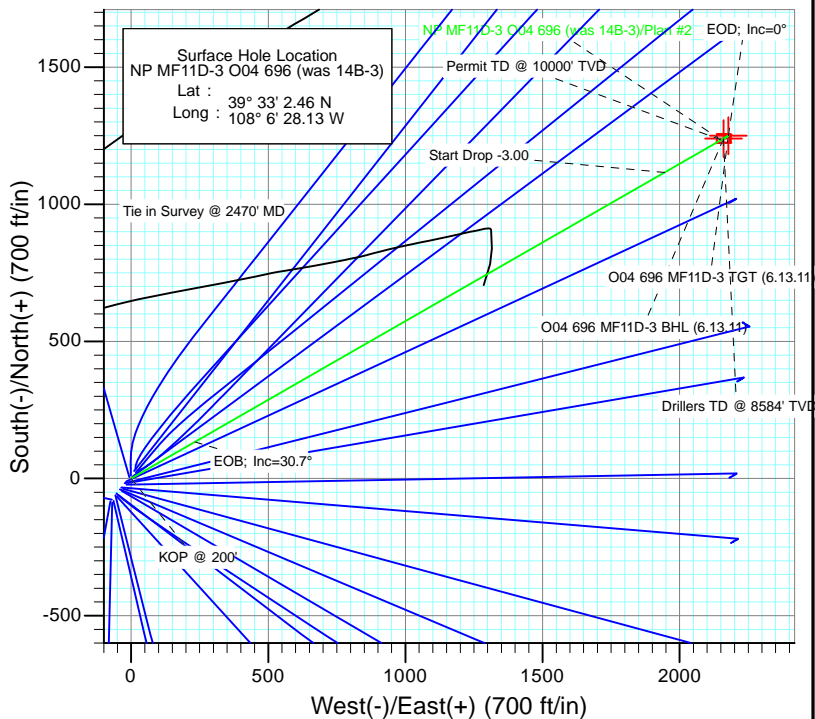




Project: North Piceance  
 Site: O04 696 (3rd)  
 Well: NP MF11D-3 O04 696 (was 14B-3)  
 Wellbore: DD  
 Design: Plan #2



SECTION DETAILS										
Sec	MD	Inc	Azi	TVD	+N/-S	+E/-W	Dleg	TFace	Vsect	Target
1	0.0	0.00	0.00	0.0	0.0	0.0	0.00	0.00	0.0	
2	200.0	0.00	0.00	200.0	0.0	0.0	0.00	0.00	0.0	
3	1223.9	30.72	60.15	1175.6	133.4	232.4	3.00	60.15	268.0	
4	5089.1	30.72	60.15	4498.4	1116.2	1944.8	0.00	0.00	2242.3	O04 696 MF11D-3 TGT (6.13.11)
5	6113.0	0.00	0.00	5474.0	1249.6	2177.2	3.00	180.00	2510.3	O04 696 MF11D-3 BHL (6.13.11)
6	6270.1	0.39	239.45	5631.1	1249.3	2176.7	0.25	239.45	2509.8	
7	9073.1	0.39	239.45	8434.0	1239.6	2160.2	0.00	0.00	2490.6	
8	9223.1	0.39	239.45	8584.0	1239.0	2159.3	0.00	0.00	2489.5	
9	10639.1	0.39	239.45	10000.0	1234.1	2150.9	0.00	0.00	2479.8	



Azimuths to True North  
 Magnetic North: 10.54°

Magnetic Field  
 Strength: 52365.1nT  
 Dip Angle: 65.79°  
 Date: 6/17/2010  
 Model: IGRF2010

#### FORMATION TOP DETAILS

TVDPath	MDPath	Formation
4934.0	5565.6	Williams Fork
4974.0	5607.1	Top of Gas; Inc=15°
8434.0	9073.1	Rollins

Plan #2  
 NP MF11D-3 O04 696 (was 14B-3)  
 95xxx; LR  
 WELL @ 6044.0ft (Original Well Elev)  
 North American Datum 1983  
 Well NP MF11D-3 O04 696 (was 14B-3), True North

Type TD	Target No Target (Freehand)	Azimuth 60.16	Origin Type Slot	N/S 0.0	E/W 0.0	From TVD 0.0
Name	TVD	+N/-S	+E/-W	Latitude	Longitude	
O04 696 MF11D-3 TGT (6.13.11)	5474.0	1249.6	2177.2	39° 33' 14.81 N	108° 6' 0.33 W	
O04 696 MF11D-3 BHL (6.13.11)	8434.0	1239.6	2160.2	39° 33' 14.71 N	108° 6' 0.55 W	

## Planning Report

<b>Database:</b>	USA EDM 5000 US Multi Users DB	<b>Local Co-ordinate Reference:</b>	Well NP MF11D-3 O04 696 (was 14B-3)
<b>Company:</b>	EnCana Oil & Gas (USA) Inc	<b>TVD Reference:</b>	WELL @ 6044.0ft (Original Well Elev)
<b>Project:</b>	North Piceance	<b>MD Reference:</b>	WELL @ 6044.0ft (Original Well Elev)
<b>Site:</b>	O04 696 (3rd)	<b>North Reference:</b>	True
<b>Well:</b>	NP MF11D-3 O04 696 (was 14B-3)	<b>Survey Calculation Method:</b>	Minimum Curvature
<b>Wellbore:</b>	DD		
<b>Design:</b>	Plan #2		

<b>Project</b>	North Piceance		
<b>Map System:</b>	US State Plane 1983	<b>System Datum:</b>	Mean Sea Level
<b>Geo Datum:</b>	North American Datum 1983		
<b>Map Zone:</b>	Colorado Central Zone		

<b>Site</b>	O04 696 (3rd)			
<b>Site Position:</b>		<b>Northing:</b>	1,635,941.08 ft	<b>Latitude:</b> 39° 33' 1.64 N
<b>From:</b>	Lat/Long	<b>Easting:</b>	2,264,673.43 ft	<b>Longitude:</b> 108° 6' 29.09 W
<b>Position Uncertainty:</b>	0.0 ft	<b>Slot Radius:</b>	13.200 in	<b>Grid Convergence:</b> -1.64 °

<b>Well</b>	NP MF11D-3 O04 696 (was 14B-3)			
<b>Well Position</b>	<b>+N/-S</b>	0.0 ft	<b>Northing:</b>	1,636,021.84 ft
	<b>+E/-W</b>	0.0 ft	<b>Easting:</b>	2,264,750.97 ft
<b>Position Uncertainty</b>		0.0 ft	<b>Wellhead Elevation:</b>	ft
			<b>Ground Level:</b>	6,022.0 ft

<b>Wellbore</b>	DD				
<b>Magnetics</b>	<b>Model Name</b>	<b>Sample Date</b>	<b>Declination (°)</b>	<b>Dip Angle (°)</b>	<b>Field Strength (nT)</b>
	IGRF2010	6/17/2010	10.54	65.79	52,365

<b>Design</b>	Plan #2			
<b>Audit Notes:</b>				
<b>Version:</b>	<b>Phase:</b>	PLAN	<b>Tie On Depth:</b>	0.0
<b>Vertical Section:</b>	<b>Depth From (TVD) (ft)</b>	<b>+N/-S (ft)</b>	<b>+E/-W (ft)</b>	<b>Direction (°)</b>
	0.0	0.0	0.0	60.16

<b>Plan Sections</b>										
Measured Depth (ft)	Inclination (°)	Azimuth (°)	Vertical Depth (ft)	+N/-S (ft)	+E/-W (ft)	Dogleg Rate (°/100ft)	Build Rate (°/100ft)	Turn Rate (°/100ft)	TFO (°)	Target
0.0	0.00	0.00	0.0	0.0	0.0	0.00	0.00	0.00	0.00	
200.0	0.00	0.00	200.0	0.0	0.0	0.00	0.00	0.00	0.00	
1,223.9	30.72	60.15	1,175.6	133.4	232.4	3.00	3.00	0.00	60.15	
5,089.1	30.72	60.15	4,498.4	1,116.2	1,944.8	0.00	0.00	0.00	0.00	
6,113.0	0.00	0.00	5,474.0	1,249.6	2,177.2	3.00	-3.00	0.00	180.00	O04 696 MF11D-3 TC
6,270.1	0.39	239.45	5,631.1	1,249.3	2,176.7	0.25	0.25	-76.73	239.45	
9,073.1	0.39	239.45	8,434.0	1,239.6	2,160.2	0.00	0.00	0.00	0.00	O04 696 MF11D-3 B+
9,223.1	0.39	239.45	8,584.0	1,239.0	2,159.3	0.00	0.00	0.00	0.00	
10,639.1	0.39	239.45	10,000.0	1,234.1	2,150.9	0.00	0.00	0.00	0.00	

# Planning Report

**Database:** USA EDM 5000 US Multi Users DB  
**Company:** EnCana Oil & Gas (USA) Inc  
**Project:** North Piceance  
**Site:** O04 696 (3rd)  
**Well:** NP MF11D-3 O04 696 (was 14B-3)  
**Wellbore:** DD  
**Design:** Plan #2

**Local Co-ordinate Reference:** Well NP MF11D-3 O04 696 (was 14B-3)  
**TVD Reference:** WELL @ 6044.0ft (Original Well Elev)  
**MD Reference:** WELL @ 6044.0ft (Original Well Elev)  
**North Reference:** True  
**Survey Calculation Method:** Minimum Curvature

## Planned Survey

Measured Depth (ft)	Inclination (°)	Azimuth (°)	Vertical Depth (ft)	+N/-S (ft)	+E/-W (ft)	Vertical Section (ft)	Dogleg Rate (°/100ft)	Build Rate (°/100ft)	Comments / Formations
0.0	0.00	0.00	0.0	0.0	0.0	0.0	0.00	0.00	
30.0	0.00	0.00	30.0	0.0	0.0	0.0	0.00	0.00	
60.0	0.00	0.00	60.0	0.0	0.0	0.0	0.00	0.00	
90.0	0.00	0.00	90.0	0.0	0.0	0.0	0.00	0.00	
120.0	0.00	0.00	120.0	0.0	0.0	0.0	0.00	0.00	
150.0	0.00	0.00	150.0	0.0	0.0	0.0	0.00	0.00	
180.0	0.00	0.00	180.0	0.0	0.0	0.0	0.00	0.00	
200.0	0.00	0.00	200.0	0.0	0.0	0.0	0.00	0.00	KOP @ 200'
210.0	0.30	60.15	210.0	0.0	0.0	0.0	3.00	3.00	
240.0	1.20	60.15	240.0	0.2	0.4	0.4	3.00	3.00	
270.0	2.10	60.15	270.0	0.6	1.1	1.3	3.00	3.00	
300.0	3.00	60.15	300.0	1.3	2.3	2.6	3.00	3.00	
330.0	3.90	60.15	329.9	2.2	3.8	4.4	3.00	3.00	
360.0	4.80	60.15	359.8	3.3	5.8	6.7	3.00	3.00	
390.0	5.70	60.15	389.7	4.7	8.2	9.4	3.00	3.00	
420.0	6.60	60.15	419.5	6.3	11.0	12.7	3.00	3.00	
450.0	7.50	60.15	449.3	8.1	14.2	16.3	3.00	3.00	
480.0	8.40	60.15	479.0	10.2	17.8	20.5	3.00	3.00	
510.0	9.30	60.15	508.6	12.5	21.8	25.1	3.00	3.00	
540.0	10.20	60.15	538.2	15.0	26.2	30.2	3.00	3.00	
570.0	11.10	60.15	567.7	17.8	31.0	35.7	3.00	3.00	
600.0	12.00	60.15	597.1	20.8	36.2	41.7	3.00	3.00	
630.0	12.90	60.15	626.4	24.0	41.8	48.2	3.00	3.00	
660.0	13.80	60.15	655.6	27.4	47.8	55.1	3.00	3.00	
690.0	14.70	60.15	684.6	31.1	54.2	62.5	3.00	3.00	
720.0	15.60	60.15	713.6	35.0	61.0	70.4	3.00	3.00	
750.0	16.50	60.15	742.4	39.2	68.2	78.6	3.00	3.00	
780.0	17.40	60.15	771.1	43.5	75.8	87.4	3.00	3.00	
810.0	18.30	60.15	799.7	48.1	83.8	96.6	3.00	3.00	
840.0	19.20	60.15	828.1	52.9	92.1	106.2	3.00	3.00	
870.0	20.10	60.15	856.3	57.9	100.9	116.3	3.00	3.00	
900.0	21.00	60.15	884.4	63.1	110.0	126.9	3.00	3.00	
930.0	21.90	60.15	912.4	68.6	119.5	137.8	3.00	3.00	
960.0	22.80	60.15	940.1	74.3	129.4	149.2	3.00	3.00	
990.0	23.70	60.15	967.7	80.2	139.7	161.1	3.00	3.00	
1,020.0	24.60	60.15	995.0	86.3	150.3	173.3	3.00	3.00	
1,050.0	25.50	60.15	1,022.2	92.6	161.4	186.0	3.00	3.00	
1,080.0	26.40	60.15	1,049.2	99.1	172.7	199.2	3.00	3.00	
1,110.0	27.30	60.15	1,076.0	105.9	184.5	212.7	3.00	3.00	
1,140.0	28.20	60.15	1,102.5	112.8	196.6	226.7	3.00	3.00	
1,170.0	29.10	60.15	1,128.8	120.0	209.1	241.1	3.00	3.00	
1,200.0	30.00	60.15	1,154.9	127.4	221.9	255.9	3.00	3.00	
1,223.9	30.72	60.15	1,175.6	133.4	232.4	268.0	3.00	3.00	EOB; Inc=30.7°
1,230.0	30.72	60.15	1,180.8	134.9	235.1	271.1	0.00	0.00	
1,260.0	30.72	60.15	1,206.6	142.6	248.4	286.4	0.00	0.00	
1,290.0	30.72	60.15	1,232.4	150.2	261.7	301.7	0.00	0.00	
1,320.0	30.72	60.15	1,258.2	157.8	275.0	317.0	0.00	0.00	
1,350.0	30.72	60.15	1,284.0	165.4	288.3	332.4	0.00	0.00	
1,380.0	30.72	60.15	1,309.8	173.1	301.6	347.7	0.00	0.00	
1,410.0	30.72	60.15	1,335.5	180.7	314.8	363.0	0.00	0.00	
1,440.0	30.72	60.15	1,361.3	188.3	328.1	378.3	0.00	0.00	
1,470.0	30.72	60.15	1,387.1	196.0	341.4	393.7	0.00	0.00	

# Planning Report

<b>Database:</b>	USA EDM 5000 US Multi Users DB	<b>Local Co-ordinate Reference:</b>	Well NP MF11D-3 O04 696 (was 14B-3)
<b>Company:</b>	EnCana Oil & Gas (USA) Inc	<b>TVD Reference:</b>	WELL @ 6044.0ft (Original Well Elev)
<b>Project:</b>	North Piceance	<b>MD Reference:</b>	WELL @ 6044.0ft (Original Well Elev)
<b>Site:</b>	O04 696 (3rd)	<b>North Reference:</b>	True
<b>Well:</b>	NP MF11D-3 O04 696 (was 14B-3)	<b>Survey Calculation Method:</b>	Minimum Curvature
<b>Wellbore:</b>	DD		
<b>Design:</b>	Plan #2		

## Planned Survey

Measured Depth (ft)	Inclination (°)	Azimuth (°)	Vertical Depth (ft)	+N/-S (ft)	+E/-W (ft)	Vertical Section (ft)	Dogleg Rate (°/100ft)	Build Rate (°/100ft)	Comments / Formations
1,500.0	30.72	60.15	1,412.9	203.6	354.7	409.0	0.00	0.00	
1,530.0	30.72	60.15	1,438.7	211.2	368.0	424.3	0.00	0.00	
1,560.0	30.72	60.15	1,464.5	218.8	381.3	439.6	0.00	0.00	
1,590.0	30.72	60.15	1,490.3	226.5	394.6	455.0	0.00	0.00	
1,620.0	30.72	60.15	1,516.1	234.1	407.9	470.3	0.00	0.00	
1,650.0	30.72	60.15	1,541.9	241.7	421.2	485.6	0.00	0.00	
1,680.0	30.72	60.15	1,567.7	249.4	434.5	500.9	0.00	0.00	
1,710.0	30.72	60.15	1,593.4	257.0	447.8	516.3	0.00	0.00	
1,740.0	30.72	60.15	1,619.2	264.6	461.0	531.6	0.00	0.00	
1,770.0	30.72	60.15	1,645.0	272.2	474.3	546.9	0.00	0.00	
1,800.0	30.72	60.15	1,670.8	279.9	487.6	562.2	0.00	0.00	
1,830.0	30.72	60.15	1,696.6	287.5	500.9	577.6	0.00	0.00	
1,860.0	30.72	60.15	1,722.4	295.1	514.2	592.9	0.00	0.00	
1,890.0	30.72	60.15	1,748.2	302.8	527.5	608.2	0.00	0.00	
1,920.0	30.72	60.15	1,774.0	310.4	540.8	623.5	0.00	0.00	
1,950.0	30.72	60.15	1,799.8	318.0	554.1	638.9	0.00	0.00	
1,980.0	30.72	60.15	1,825.6	325.6	567.4	654.2	0.00	0.00	
2,010.0	30.72	60.15	1,851.4	333.3	580.7	669.5	0.00	0.00	
2,040.0	30.72	60.15	1,877.1	340.9	594.0	684.8	0.00	0.00	
2,070.0	30.72	60.15	1,902.9	348.5	607.2	700.2	0.00	0.00	
2,100.0	30.72	60.15	1,928.7	356.2	620.5	715.5	0.00	0.00	
2,130.0	30.72	60.15	1,954.5	363.8	633.8	730.8	0.00	0.00	
2,160.0	30.72	60.15	1,980.3	371.4	647.1	746.1	0.00	0.00	
2,190.0	30.72	60.15	2,006.1	379.0	660.4	761.5	0.00	0.00	
2,220.0	30.72	60.15	2,031.9	386.7	673.7	776.8	0.00	0.00	
2,250.0	30.72	60.15	2,057.7	394.3	687.0	792.1	0.00	0.00	
2,280.0	30.72	60.15	2,083.5	401.9	700.3	807.4	0.00	0.00	
2,310.0	30.72	60.15	2,109.3	409.6	713.6	822.7	0.00	0.00	
2,340.0	30.72	60.15	2,135.1	417.2	726.9	838.1	0.00	0.00	
2,370.0	30.72	60.15	2,160.8	424.8	740.2	853.4	0.00	0.00	
2,400.0	30.72	60.15	2,186.6	432.4	753.4	868.7	0.00	0.00	
2,430.0	30.72	60.15	2,212.4	440.1	766.7	884.0	0.00	0.00	
2,460.0	30.72	60.15	2,238.2	447.7	780.0	899.4	0.00	0.00	
2,490.0	30.72	60.15	2,264.0	455.3	793.3	914.7	0.00	0.00	

## Targets

Target Name	Dip Angle (°)	Dip Dir. (°)	TVD (ft)	+N/-S (ft)	+E/-W (ft)	Northing (ft)	Easting (ft)	Latitude	Longitude
- hit/miss target									
- Shape									
O04 696 MF11D-3 TGT	0.00	0.00	5,474.0	1,249.6	2,177.2	1,637,208.43	2,266,963.14	39° 33' 14.81 N	108° 6' 0.33 W
- plan misses target center by 3584.7ft at 2490.0ft MD (2264.0 TVD, 455.3 N, 793.3 E)									
- Point									
O04 696 MF11D-3 BHL	0.00	0.00	8,434.0	1,239.6	2,160.2	1,637,198.89	2,266,945.85	39° 33' 14.71 N	108° 6' 0.55 W
- plan misses target center by 6368.1ft at 2490.0ft MD (2264.0 TVD, 455.3 N, 793.3 E)									
- Rectangle (sides W30.0 H50.0 D0.0)									

# Planning Report

<b>Database:</b>	USA EDM 5000 US Multi Users DB	<b>Local Co-ordinate Reference:</b>	Well NP MF11D-3 O04 696 (was 14B-3)
<b>Company:</b>	EnCana Oil & Gas (USA) Inc	<b>TVD Reference:</b>	WELL @ 6044.0ft (Original Well Elev)
<b>Project:</b>	North Piceance	<b>MD Reference:</b>	WELL @ 6044.0ft (Original Well Elev)
<b>Site:</b>	O04 696 (3rd)	<b>North Reference:</b>	True
<b>Well:</b>	NP MF11D-3 O04 696 (was 14B-3)	<b>Survey Calculation Method:</b>	Minimum Curvature
<b>Wellbore:</b>	DD		
<b>Design:</b>	Plan #2		

Planned Survey									
Measured Depth (ft)	Inclination (°)	Azimuth (°)	Vertical Depth (ft)	+N/-S (ft)	+E/-W (ft)	Vertical Section (ft)	Dogleg Rate (°/100ft)	Build Rate (°/100ft)	Comments / Formations
2,500.0	30.72	60.15	2,272.6	457.9	797.7	919.8	0.00	0.00	
2,600.0	30.72	60.15	2,358.6	483.3	842.0	970.9	0.00	0.00	
2,700.0	30.72	60.15	2,444.5	508.7	886.4	1,022.0	0.00	0.00	
2,800.0	30.72	60.15	2,530.5	534.1	930.7	1,073.0	0.00	0.00	
2,900.0	30.72	60.15	2,616.5	559.6	975.0	1,124.1	0.00	0.00	
3,000.0	30.72	60.15	2,702.4	585.0	1,019.3	1,175.2	0.00	0.00	
3,100.0	30.72	60.15	2,788.4	610.4	1,063.6	1,226.3	0.00	0.00	
3,200.0	30.72	60.15	2,874.4	635.9	1,107.9	1,277.4	0.00	0.00	
3,300.0	30.72	60.15	2,960.4	661.3	1,152.2	1,328.5	0.00	0.00	
3,400.0	30.72	60.15	3,046.3	686.7	1,196.5	1,379.5	0.00	0.00	
3,500.0	30.72	60.15	3,132.3	712.1	1,240.8	1,430.6	0.00	0.00	
3,600.0	30.72	60.15	3,218.3	737.6	1,285.1	1,481.7	0.00	0.00	
3,700.0	30.72	60.15	3,304.2	763.0	1,329.4	1,532.8	0.00	0.00	
3,800.0	30.72	60.15	3,390.2	788.4	1,373.7	1,583.9	0.00	0.00	
3,900.0	30.72	60.15	3,476.2	813.9	1,418.0	1,634.9	0.00	0.00	
4,000.0	30.72	60.15	3,562.1	839.3	1,462.3	1,686.0	0.00	0.00	
4,100.0	30.72	60.15	3,648.1	864.7	1,506.6	1,737.1	0.00	0.00	
4,200.0	30.72	60.15	3,734.1	890.1	1,550.9	1,788.2	0.00	0.00	
4,300.0	30.72	60.15	3,820.0	915.6	1,595.2	1,839.3	0.00	0.00	
4,400.0	30.72	60.15	3,906.0	941.0	1,639.5	1,890.4	0.00	0.00	
4,500.0	30.72	60.15	3,992.0	966.4	1,683.8	1,941.4	0.00	0.00	
4,600.0	30.72	60.15	4,078.0	991.8	1,728.1	1,992.5	0.00	0.00	
4,700.0	30.72	60.15	4,163.9	1,017.3	1,772.4	2,043.6	0.00	0.00	
4,800.0	30.72	60.15	4,249.9	1,042.7	1,816.7	2,094.7	0.00	0.00	
4,900.0	30.72	60.15	4,335.9	1,068.1	1,861.0	2,145.8	0.00	0.00	
5,000.0	30.72	60.15	4,421.8	1,093.6	1,905.3	2,196.8	0.00	0.00	
5,089.1	30.72	60.15	4,498.4	1,116.2	1,944.8	2,242.3	0.00	0.00	Start Drop -3.00
5,100.0	30.39	60.15	4,507.8	1,119.0	1,949.6	2,247.9	3.00	-3.00	
5,200.0	27.39	60.15	4,595.4	1,143.0	1,991.5	2,296.2	3.00	-3.00	
5,300.0	24.39	60.15	4,685.3	1,164.8	2,029.4	2,339.9	3.00	-3.00	
5,400.0	21.39	60.15	4,777.4	1,184.1	2,063.1	2,378.8	3.00	-3.00	
5,500.0	18.39	60.15	4,871.4	1,201.0	2,092.6	2,412.8	3.00	-3.00	
5,565.6	16.42	60.15	4,934.0	1,210.8	2,109.6	2,432.4	3.00	-3.00	Williams Fork
5,600.0	15.39	60.15	4,967.1	1,215.5	2,117.8	2,441.8	3.00	-3.00	
5,607.1	15.18	60.15	4,974.0	1,216.4	2,119.4	2,443.7	3.00	-3.00	Top of Gas; Inc=15°
5,700.0	12.39	60.15	5,064.2	1,227.5	2,138.6	2,465.8	3.00	-3.00	
5,800.0	9.39	60.15	5,162.4	1,236.9	2,155.0	2,484.7	3.00	-3.00	
5,900.0	6.39	60.15	5,261.4	1,243.7	2,166.9	2,498.5	3.00	-3.00	
6,000.0	3.39	60.15	5,361.0	1,247.9	2,174.3	2,507.0	3.00	-3.00	
6,100.0	0.39	60.15	5,461.0	1,249.6	2,177.2	2,510.3	3.00	-3.00	
6,113.0	0.00	0.00	5,474.0	1,249.6	2,177.2	2,510.3	3.00	-3.00	EOD; Inc=0° - O04 696 MF11D-3 TGT (6.13.11)
6,200.0	0.22	239.45	5,561.0	1,249.5	2,177.1	2,510.2	0.25	0.25	
6,270.1	0.39	239.45	5,631.1	1,249.3	2,176.7	2,509.8	0.25	0.25	
6,300.0	0.39	239.45	5,661.0	1,249.2	2,176.6	2,509.6	0.00	0.00	
6,400.0	0.39	239.45	5,761.0	1,248.9	2,176.0	2,508.9	0.00	0.00	
6,500.0	0.39	239.45	5,861.0	1,248.5	2,175.4	2,508.2	0.00	0.00	
6,600.0	0.39	239.45	5,961.0	1,248.2	2,174.8	2,507.5	0.00	0.00	
6,700.0	0.39	239.45	6,061.0	1,247.8	2,174.2	2,506.8	0.00	0.00	
6,800.0	0.39	239.45	6,161.0	1,247.5	2,173.6	2,506.1	0.00	0.00	
6,900.0	0.39	239.45	6,261.0	1,247.1	2,173.0	2,505.5	0.00	0.00	
7,000.0	0.39	239.45	6,361.0	1,246.8	2,172.4	2,504.8	0.00	0.00	
7,100.0	0.39	239.45	6,461.0	1,246.4	2,171.8	2,504.1	0.00	0.00	

# Planning Report

<b>Database:</b>	USA EDM 5000 US Multi Users DB	<b>Local Co-ordinate Reference:</b>	Well NP MF11D-3 O04 696 (was 14B-3)
<b>Company:</b>	EnCana Oil & Gas (USA) Inc	<b>TVD Reference:</b>	WELL @ 6044.0ft (Original Well Elev)
<b>Project:</b>	North Piceance	<b>MD Reference:</b>	WELL @ 6044.0ft (Original Well Elev)
<b>Site:</b>	O04 696 (3rd)	<b>North Reference:</b>	True
<b>Well:</b>	NP MF11D-3 O04 696 (was 14B-3)	<b>Survey Calculation Method:</b>	Minimum Curvature
<b>Wellbore:</b>	DD		
<b>Design:</b>	Plan #2		

Planned Survey									
Measured Depth (ft)	Inclination (°)	Azimuth (°)	Vertical Depth (ft)	+N/-S (ft)	+E/-W (ft)	Vertical Section (ft)	Dogleg Rate (°/100ft)	Build Rate (°/100ft)	Comments / Formations
7,200.0	0.39	239.45	6,561.0	1,246.1	2,171.2	2,503.4	0.00	0.00	
7,300.0	0.39	239.45	6,661.0	1,245.7	2,170.7	2,502.7	0.00	0.00	
7,400.0	0.39	239.45	6,760.9	1,245.4	2,170.1	2,502.0	0.00	0.00	
7,500.0	0.39	239.45	6,860.9	1,245.0	2,169.5	2,501.3	0.00	0.00	
7,600.0	0.39	239.45	6,960.9	1,244.7	2,168.9	2,500.7	0.00	0.00	
7,700.0	0.39	239.45	7,060.9	1,244.3	2,168.3	2,500.0	0.00	0.00	
7,800.0	0.39	239.45	7,160.9	1,244.0	2,167.7	2,499.3	0.00	0.00	
7,900.0	0.39	239.45	7,260.9	1,243.6	2,167.1	2,498.6	0.00	0.00	
8,000.0	0.39	239.45	7,360.9	1,243.3	2,166.5	2,497.9	0.00	0.00	
8,100.0	0.39	239.45	7,460.9	1,242.9	2,165.9	2,497.2	0.00	0.00	
8,200.0	0.39	239.45	7,560.9	1,242.6	2,165.3	2,496.6	0.00	0.00	
8,300.0	0.39	239.45	7,660.9	1,242.3	2,164.8	2,495.9	0.00	0.00	
8,400.0	0.39	239.45	7,760.9	1,241.9	2,164.2	2,495.2	0.00	0.00	
8,500.0	0.39	239.45	7,860.9	1,241.6	2,163.6	2,494.5	0.00	0.00	
8,600.0	0.39	239.45	7,960.9	1,241.2	2,163.0	2,493.8	0.00	0.00	
8,700.0	0.39	239.45	8,060.9	1,240.9	2,162.4	2,493.1	0.00	0.00	
8,800.0	0.39	239.45	8,160.9	1,240.5	2,161.8	2,492.4	0.00	0.00	
8,900.0	0.39	239.45	8,260.9	1,240.2	2,161.2	2,491.8	0.00	0.00	
9,000.0	0.39	239.45	8,360.9	1,239.8	2,160.6	2,491.1	0.00	0.00	
9,073.1	0.39	239.45	8,434.0	1,239.6	2,160.2	2,490.6	0.00	0.00	Rollins - O04 696 MF11D-3 BHL (6.13.11)
9,100.0	0.39	239.45	8,460.9	1,239.5	2,160.0	2,490.4	0.00	0.00	
9,200.0	0.39	239.45	8,560.9	1,239.1	2,159.4	2,489.7	0.00	0.00	
9,223.1	0.39	239.45	8,584.0	1,239.0	2,159.3	2,489.5	0.00	0.00	Drillers TD @ 8584' TVD
9,300.0	0.39	239.45	8,660.9	1,238.8	2,158.8	2,489.0	0.00	0.00	
9,400.0	0.39	239.45	8,760.9	1,238.4	2,158.3	2,488.3	0.00	0.00	
9,500.0	0.39	239.45	8,860.9	1,238.1	2,157.7	2,487.6	0.00	0.00	
9,600.0	0.39	239.45	8,960.9	1,237.7	2,157.1	2,487.0	0.00	0.00	
9,700.0	0.39	239.45	9,060.9	1,237.4	2,156.5	2,486.3	0.00	0.00	
9,800.0	0.39	239.45	9,160.9	1,237.0	2,155.9	2,485.6	0.00	0.00	
9,900.0	0.39	239.45	9,260.9	1,236.7	2,155.3	2,484.9	0.00	0.00	
10,000.0	0.39	239.45	9,360.9	1,236.3	2,154.7	2,484.2	0.00	0.00	
10,100.0	0.39	239.45	9,460.9	1,236.0	2,154.1	2,483.5	0.00	0.00	
10,200.0	0.39	239.45	9,560.9	1,235.6	2,153.5	2,482.8	0.00	0.00	
10,300.0	0.39	239.45	9,660.9	1,235.3	2,152.9	2,482.2	0.00	0.00	
10,400.0	0.39	239.45	9,760.9	1,234.9	2,152.4	2,481.5	0.00	0.00	
10,500.0	0.39	239.45	9,860.9	1,234.6	2,151.8	2,480.8	0.00	0.00	
10,600.0	0.39	239.45	9,960.9	1,234.2	2,151.2	2,480.1	0.00	0.00	
10,639.1	0.39	239.45	10,000.0	1,234.1	2,150.9	2,479.8	0.00	0.00	Permit TD @ 10000' TVD

Targets									
Target Name	Dip Angle (°)	Dip Dir. (°)	TVD (ft)	+N/-S (ft)	+E/-W (ft)	Northing (ft)	Easting (ft)	Latitude	Longitude
O04 696 MF11D-3 TGT	0.00	0.00	5,474.0	1,249.6	2,177.2	1,637,208.43	2,266,963.14	39° 33' 14.81 N	108° 6' 0.33 W
- hit/miss target									
- plan hits target center									
- Shape									
- Point									
O04 696 MF11D-3 BHL	0.00	0.00	8,434.0	1,239.6	2,160.2	1,637,198.89	2,266,945.85	39° 33' 14.71 N	108° 6' 0.55 W
- hit/miss target									
- plan hits target center									
- Rectangle (sides W30.0 H50.0 D0.0)									

## Planning Report

<b>Database:</b>	USA EDM 5000 US Multi Users DB	<b>Local Co-ordinate Reference:</b>	Well NP MF11D-3 O04 696 (was 14B-3)
<b>Company:</b>	EnCana Oil & Gas (USA) Inc	<b>TVD Reference:</b>	WELL @ 6044.0ft (Original Well Elev)
<b>Project:</b>	North Piceance	<b>MD Reference:</b>	WELL @ 6044.0ft (Original Well Elev)
<b>Site:</b>	O04 696 (3rd)	<b>North Reference:</b>	True
<b>Well:</b>	NP MF11D-3 O04 696 (was 14B-3)	<b>Survey Calculation Method:</b>	Minimum Curvature
<b>Wellbore:</b>	DD		
<b>Design:</b>	Plan #2		

Formations						
Measured Depth (ft)	Vertical Depth (ft)	Name	Lithology	Dip (°)	Dip Direction (°)	
5,565.6	4,934.0	Williams Fork		0.00		
5,607.1	4,974.0	Top of Gas; Inc=15°		0.00		
9,073.1	8,434.0	Rollins		0.00		

Plan Annotations					
Measured Depth (ft)	Vertical Depth (ft)	Local Coordinates			
		+N/-S (ft)	+E/-W (ft)	Comment	
200.0	200.0	0.0	0.0	KOP @ 200'	
1,223.9	1,175.6	133.4	232.4	EOB; Inc=30.7°	
5,089.1	4,498.4	1,116.2	1,944.8	Start Drop -3.00	
6,113.0	5,474.0	1,249.6	2,177.2	EOD; Inc=0°	
9,223.1	8,584.0	1,249.3	2,176.7	Drillers TD @ 8584' TVD	
10,639.1	10,000.0	1,239.6	2,160.2	Permit TD @ 10000' TVD	

# **EnCana Oil & Gas (USA) Inc**

**North Piceance**

**O04 696 (3rd)**

**NP MF11D-3 O04 696 (was 14B-3)**

**DD**

**Plan #2**

## **Anticollision Report**

**14 June, 2011**



## Anticollision Report

<b>Company:</b>	EnCana Oil & Gas (USA) Inc	<b>Local Co-ordinate Reference:</b>	Well NP MF11D-3 O04 696 (was 14B-3)
<b>Project:</b>	North Piceance	<b>TVD Reference:</b>	WELL @ 6044.0ft (Original Well Elev)
<b>Reference Site:</b>	O04 696 (3rd)	<b>MD Reference:</b>	WELL @ 6044.0ft (Original Well Elev)
<b>Site Error:</b>	0.0ft	<b>North Reference:</b>	True
<b>Reference Well:</b>	NP MF11D-3 O04 696 (was 14B-3)	<b>Survey Calculation Method:</b>	Minimum Curvature
<b>Well Error:</b>	0.0ft	<b>Output errors are at</b>	2.00 sigma
<b>Reference Wellbore</b>	DD	<b>Database:</b>	EDM 5000.1 US Multi Users DB
<b>Reference Design:</b>	Plan #2	<b>Offset TVD Reference:</b>	Offset Datum

<b>Reference</b>	Plan #2		
<b>Filter type:</b>	NO GLOBAL FILTER: Using user defined selection & filtering criteria		
<b>Interpolation Method:</b>	MD Interval 100.0ft	<b>Error Model:</b>	Systematic Ellipse
<b>Depth Range:</b>	Unlimited	<b>Scan Method:</b>	Closest Approach 3D
<b>Results Limited by:</b>	Maximum center-center distance of 100.0ft	<b>Error Surface:</b>	Elliptical Conic
<b>Warning Levels Evaluated at:</b>	2.00 Sigma		

<b>Survey Tool Program</b>		<b>Date</b>	6/14/2011		
<b>From (ft)</b>	<b>To (ft)</b>	<b>Survey (Wellbore)</b>	<b>Tool Name</b>	<b>Description</b>	
0.0	10,639.1	Plan #2 (DD)	MWD	Geolink MWD	

# Anticollision Report

<b>Company:</b>	EnCana Oil & Gas (USA) Inc	<b>Local Co-ordinate Reference:</b>	Well NP MF11D-3 O04 696 (was 14B-3)
<b>Project:</b>	North Piceance	<b>TVD Reference:</b>	WELL @ 6044.0ft (Original Well Elev)
<b>Reference Site:</b>	O04 696 (3rd)	<b>MD Reference:</b>	WELL @ 6044.0ft (Original Well Elev)
<b>Site Error:</b>	0.0ft	<b>North Reference:</b>	True
<b>Reference Well:</b>	NP MF11D-3 O04 696 (was 14B-3)	<b>Survey Calculation Method:</b>	Minimum Curvature
<b>Well Error:</b>	0.0ft	<b>Output errors are at</b>	2.00 sigma
<b>Reference Wellbore</b>	DD	<b>Database:</b>	EDM 5000.1 US Multi Users DB
<b>Reference Design:</b>	Plan #2	<b>Offset TVD Reference:</b>	Offset Datum

## Summary

Site Name	Reference Measured Depth (ft)	Offset Measured Depth (ft)	Distance Between Centres (ft)	Between Ellipses (ft)	Separation Factor	Warning
<b>Offset Well - Wellbore - Design</b>						
N04 696 Pad (NESW Sec4-T6S-R96W)						
NP MF09A N04 696 - DD - DD						Out of range
NP MF09A N04 696 - DD - Plan #3						Out of range
NP MF09A N04 696 - DD - Plan #4						Out of range
NP MF16A N04 696 - DD - DD						Out of range
NP MF16A N04 696 - DD - Plan #1						Out of range
NP MF16A N04 696 - DD - Plan#2						Out of range
O04 696 (3rd)						
NP MF01D-9 O04 696 (was 17C-4) - DD - Plan #2	200.0	200.0	83.9	83.3	135.103	CC, ES
NP MF01D-9 O04 696 (was 17C-4) - DD - Plan #2	400.0	395.7	97.0	95.7	73.169	SF
NP MF02A-9 O04 696 (was 18C-4) - DD - Plan #2						Out of range
NP MF06A-3 O04 696 (was 11C-3) - DD - Plan #2	200.0	200.0	11.2	10.6	18.082	CC, ES
NP MF06A-3 O04 696 (was 11C-3) - DD - Plan #2	600.0	597.6	27.2	24.6	10.236	SF
NP MF06B-3 O04 696 (was 15A-4) - DD - Plan #2	200.0	200.0	29.4	28.8	47.377	CC, ES
NP MF06B-3 O04 696 (was 15A-4) - DD - Plan #2	1,100.0	1,080.7	94.5	85.9	11.031	SF
NP MF06C-3 O04 696 (was 09C-4) - DD - Plan #2	200.0	200.0	36.9	36.3	59.358	CC
NP MF06C-3 O04 696 (was 09C-4) - DD - Plan #2	300.0	298.2	37.1	36.2	38.228	ES
NP MF06C-3 O04 696 (was 09C-4) - DD - Plan #2	1,000.0	984.3	97.7	90.9	14.353	SF
NP MF06E-3 O04 696 (was 11B-3) - DD - Plan #2	717.2	708.3	33.8	31.1	12.786	CC
NP MF06E-3 O04 696 (was 11B-3) - DD - Plan #2	800.0	789.6	34.1	30.9	10.628	ES
NP MF06E-3 O04 696 (was 11B-3) - DD - Plan #2	1,300.0	1,278.4	64.8	53.0	5.476	SF
NP MF08B-9 O04 696 (was 01B-9) - DD - Plan #2						Out of range
NP MF11A-3 O04 696 (was 12C-3) - DD - Plan #2	530.8	527.9	18.6	16.6	9.503	CC, ES
NP MF11A-3 O04 696 (was 12C-3) - DD - Plan #2	700.0	695.5	24.8	21.6	7.607	SF
NP MF11B-3 O04 696 (was 14A-3) - DD - Plan #2	200.0	200.0	7.7	7.1	12.356	CC
NP MF11B-3 O04 696 (was 14A-3) - DD - Plan #2	400.0	399.2	8.1	6.8	6.057	ES
NP MF11B-3 O04 696 (was 14A-3) - DD - Plan #2	1,200.0	1,195.5	32.6	21.8	3.026	SF
NP MF11E-3 O04 696 (was 13A-3) - DD - Plan #2	462.0	465.0	21.8	20.2	14.105	CC
NP MF11E-3 O04 696 (was 13A-3) - DD - Plan #2	800.0	806.7	22.8	19.6	7.219	ES
NP MF11E-3 O04 696 (was 13A-3) - DD - Plan #2	2,700.0	2,708.9	96.5	58.7	2.555	SF
NP MF11G-3 O04 696 (was 14C-3) - DD - Plan #2	200.0	200.0	29.1	28.5	46.868	CC, ES
NP MF11G-3 O04 696 (was 14C-3) - DD - Plan #2	1,100.0	1,116.9	90.8	84.7	14.776	SF
NP MF14A-3 O04 696 (was 13B-3) - DD - Plan #2	200.0	200.0	20.5	19.9	32.950	CC, ES
NP MF14A-3 O04 696 (was 13B-3) - DD - Plan #2	1,100.0	1,101.1	85.6	76.6	9.561	SF
NP MF14C-3 O04 696 (was 14D-3) - DD - Plan #2	200.0	200.0	28.2	27.5	45.306	CC, ES
NP MF14C-3 O04 696 (was 14D-3) - DD - Plan #2	900.0	900.7	83.1	77.4	14.503	SF
NP MF14D-3 O04 696 (was 19A-3) - DD - Plan #2	200.0	200.0	48.4	47.8	77.963	CC, ES
NP MF14D-3 O04 696 (was 19A-3) - DD - Plan #2	800.0	807.9	99.0	95.5	28.349	SF
NP MF14E-3 O04 696 (was 19B-3) - DD - Plan #2	200.0	200.0	47.8	47.2	76.974	CC, ES
NP MF14E-3 O04 696 (was 19B-3) - DD - Plan #2	700.0	699.9	90.0	86.7	26.976	SF
NP MF15A-4 O04 696 (was 11D-3) - DD - Plan #2	200.0	200.0	8.1	7.4	12.962	CC, ES
NP MF15A-4 O04 696 (was 11D-3) - DD - Plan #2	300.0	299.6	11.2	10.2	11.408	SF
NP MF15D-4 O04 696 (was 01B-9) - DD - Plan #2						Out of range
NP MF18B-4 O04 696 (was 01A-9) - DD - Plan #2						Out of range
NP MF19A-3 O04 696 (was 17B-4) - DD - Plan #2	200.0	200.0	56.7	56.1	91.272	CC, ES
NP MF19A-3 O04 696 (was 17B-4) - DD - Plan #2	600.0	601.9	86.8	84.5	37.549	SF
NP MF19C-3 O04 696 (was 20B-3) - DD - Plan #2	200.0	200.0	56.3	55.7	90.612	CC, ES
NP MF19C-3 O04 696 (was 20B-3) - DD - Plan #2	600.0	597.1	93.1	90.6	37.416	SF
NP MF19D-3 O04 696 (was 19C-3) - DD - Plan #2	200.0	200.0	76.3	75.7	122.805	CC, ES
NP MF19D-3 O04 696 (was 19C-3) - DD - Plan #2	500.0	499.1	98.8	97.1	58.607	SF
NP MF19E-3 O04 696 (was 19D-3) - DD - Plan #2	200.0	200.0	76.0	75.4	122.278	CC, ES
NP MF19E-3 O04 696 (was 19D-3) - DD - Plan #2	500.0	498.0	98.5	96.6	52.919	SF
NP MF20F-3 O04 696 (was 20D-3) - DD - Plan #2	200.0	200.0	83.7	83.0	134.634	CC, ES

CC - Min centre to center distance or convergent point, SF - min separation factor, ES - min ellipse separation

## Anticollision Report

<b>Company:</b>	EnCana Oil & Gas (USA) Inc	<b>Local Co-ordinate Reference:</b>	Well NP MF11D-3 O04 696 (was 14B-3)
<b>Project:</b>	North Piceance	<b>TVD Reference:</b>	WELL @ 6044.0ft (Original Well Elev)
<b>Reference Site:</b>	O04 696 (3rd)	<b>MD Reference:</b>	WELL @ 6044.0ft (Original Well Elev)
<b>Site Error:</b>	0.0ft	<b>North Reference:</b>	True
<b>Reference Well:</b>	NP MF11D-3 O04 696 (was 14B-3)	<b>Survey Calculation Method:</b>	Minimum Curvature
<b>Well Error:</b>	0.0ft	<b>Output errors are at</b>	2.00 sigma
<b>Reference Wellbore</b>	DD	<b>Database:</b>	EDM 5000.1 US Multi Users DB
<b>Reference Design:</b>	Plan #2	<b>Offset TVD Reference:</b>	Offset Datum

Summary						
Site Name	Reference Measured Depth (ft)	Offset Measured Depth (ft)	Distance Between Centres (ft)	Distance Between Ellipses (ft)	Separation Factor	Warning
Offset Well - Wellbore - Design						
O04 696 (3rd)						
NP MF20F-3 O04 696 (was 20D-3) - DD - Plan #2	400.0	397.7	95.3	93.9	69.360	SF

## Anticollision Report

<b>Company:</b>	EnCana Oil & Gas (USA) Inc	<b>Local Co-ordinate Reference:</b>	Well NP MF11D-3 O04 696 (was 14B-3)
<b>Project:</b>	North Piceance	<b>TVD Reference:</b>	WELL @ 6044.0ft (Original Well Elev)
<b>Reference Site:</b>	O04 696 (3rd)	<b>MD Reference:</b>	WELL @ 6044.0ft (Original Well Elev)
<b>Site Error:</b>	0.0ft	<b>North Reference:</b>	True
<b>Reference Well:</b>	NP MF11D-3 O04 696 (was 14B-3)	<b>Survey Calculation Method:</b>	Minimum Curvature
<b>Well Error:</b>	0.0ft	<b>Output errors are at</b>	2.00 sigma
<b>Reference Wellbore</b>	DD	<b>Database:</b>	EDM 5000.1 US Multi Users DB
<b>Reference Design:</b>	Plan #2	<b>Offset TVD Reference:</b>	Offset Datum

Offset Design												Offset Site Error:		0.0 ft
Survey Program: 0-MWD												Offset Well Error:		0.0 ft
Reference		Offset		Semi Major Axis		Distance							Warning	
Measured Depth Depth (ft)	Vertical Depth (ft)	Measured Depth (ft)	Vertical Depth (ft)	Reference (ft)	Offset (ft)	Highside Toolface (°)	Offset Wellbore +N/-S (ft)	Centre +E/-W (ft)	Between Centres (ft)	Between Ellipses (ft)	Total Uncertainty Axis	Separation Factor		
0.0	0.0	0.0	0.0	0.0	0.0	-136.33	-60.7	-58.0	83.9					
100.0	100.0	100.0	100.0	0.1	0.1	-136.33	-60.7	-58.0	83.9	83.7	0.27	308.313		
200.0	200.0	200.0	200.0	0.3	0.3	-136.33	-60.7	-58.0	83.9	83.3	0.62	135.103 CC, ES		
300.0	300.0	298.8	298.8	0.5	0.5	163.63	-61.3	-57.8	86.8	85.8	0.97	89.607		
400.0	399.6	395.7	395.6	0.7	0.7	162.33	-66.1	-56.6	97.0	95.7	1.33	73.169 SF		

# Anticollision Report

<b>Company:</b>	EnCana Oil & Gas (USA) Inc	<b>Local Co-ordinate Reference:</b>	Well NP MF11D-3 O04 696 (was 14B-3)
<b>Project:</b>	North Piceance	<b>TVD Reference:</b>	WELL @ 6044.0ft (Original Well Elev)
<b>Reference Site:</b>	O04 696 (3rd)	<b>MD Reference:</b>	WELL @ 6044.0ft (Original Well Elev)
<b>Site Error:</b>	0.0ft	<b>North Reference:</b>	True
<b>Reference Well:</b>	NP MF11D-3 O04 696 (was 14B-3)	<b>Survey Calculation Method:</b>	Minimum Curvature
<b>Well Error:</b>	0.0ft	<b>Output errors are at</b>	2.00 sigma
<b>Reference Wellbore</b>	DD	<b>Database:</b>	EDM 5000.1 US Multi Users DB
<b>Reference Design:</b>	Plan #2	<b>Offset TVD Reference:</b>	Offset Datum

Offset Design O04 696 (3rd) - NP MF06A-3 O04 696 (was 11C-3) - DD - Plan #2												Offset Site Error:	0.0 ft
Survey Program: 0-MWD												Offset Well Error:	0.0 ft
Reference		Offset		Semi Major Axis			Distance						Warning
Measured Depth	Vertical Depth	Measured Depth	Vertical Depth	Reference	Offset	Highside Toolface	Offset Wellbore Centre	Between Centres	Between Ellipses	Total Uncertainty	Separation		
(ft)	(ft)	(ft)	(ft)	(ft)	(ft)	(°)	+N/-S (ft)	+E/-W (ft)	(ft)	(ft)	Axis	Factor	
0.0	0.0	0.0	0.0	0.0	0.0	-8.02	11.1	-1.6	11.2				
100.0	100.0	100.0	100.0	0.1	0.1	-8.02	11.1	-1.6	11.2	11.0	0.27	41.264	
200.0	200.0	200.0	200.0	0.3	0.3	-8.02	11.1	-1.6	11.2	10.6	0.62	18.082 CC, ES	
300.0	300.0	299.6	299.5	0.5	0.5	-71.00	13.2	0.0	12.1	11.2	0.98	12.368	
400.0	399.6	399.1	398.7	0.7	0.7	-77.38	19.5	4.6	15.0	13.6	1.41	10.670	
500.0	498.8	498.4	497.2	1.0	1.0	-83.79	29.9	12.2	20.0	18.1	1.95	10.242	
600.0	597.1	597.6	594.7	1.4	1.4	-88.66	44.4	22.8	27.2	24.6	2.66	10.236 SF	
700.0	694.3	696.5	690.9	1.8	1.8	-91.99	62.9	36.4	36.6	33.1	3.54	10.354	
800.0	790.2	795.1	785.5	2.4	2.3	-94.21	85.3	52.8	48.2	43.6	4.59	10.492	
900.0	884.4	893.3	878.2	3.0	2.9	-95.67	111.5	72.0	61.8	56.0	5.82	10.615	
1,000.0	976.8	991.1	968.6	3.7	3.6	-96.62	141.3	94.0	77.4	70.2	7.22	10.716	
1,100.0	1,067.1	1,088.4	1,056.7	4.6	4.4	-97.22	174.7	118.5	95.0	86.2	8.80	10.794	

## Anticollision Report

<b>Company:</b>	EnCana Oil & Gas (USA) Inc	<b>Local Co-ordinate Reference:</b>	Well NP MF11D-3 O04 696 (was 14B-3)
<b>Project:</b>	North Piceance	<b>TVD Reference:</b>	WELL @ 6044.0ft (Original Well Elev)
<b>Reference Site:</b>	O04 696 (3rd)	<b>MD Reference:</b>	WELL @ 6044.0ft (Original Well Elev)
<b>Site Error:</b>	0.0ft	<b>North Reference:</b>	True
<b>Reference Well:</b>	NP MF11D-3 O04 696 (was 14B-3)	<b>Survey Calculation Method:</b>	Minimum Curvature
<b>Well Error:</b>	0.0ft	<b>Output errors are at</b>	2.00 sigma
<b>Reference Wellbore</b>	DD	<b>Database:</b>	EDM 5000.1 US Multi Users DB
<b>Reference Design:</b>	Plan #2	<b>Offset TVD Reference:</b>	Offset Datum

Offset Design O04 696 (3rd) - NP MF06B-3 O04 696 (was 15A-4) - DD - Plan #2												Offset Site Error:	0.0 ft
Survey Program: 0-MWD												Offset Well Error:	0.0 ft
Reference		Offset		Semi Major Axis			Distance						
Measured Depth (ft)	Vertical Depth (ft)	Measured Depth (ft)	Vertical Depth (ft)	Reference (ft)	Offset (ft)	Highside Toolface (°)	Offset Wellbore Centre +N/-S (ft)	+E/-W (ft)	Between Centres (ft)	Between Ellipses (ft)	Total Uncertainty Axis	Separation Factor	Warning
0.0	0.0	0.0	0.0	0.0	0.0	21.87	27.3	11.0	29.4				
100.0	100.0	100.0	100.0	0.1	0.1	21.87	27.3	11.0	29.4	29.2	0.27	108.117	
200.0	200.0	200.0	200.0	0.3	0.3	21.87	27.3	11.0	29.4	28.8	0.62	47.377 CC, ES	
300.0	300.0	298.5	298.5	0.5	0.5	-39.96	29.3	12.5	29.9	28.9	0.97	30.737	
400.0	399.6	397.0	396.7	0.7	0.7	-44.72	35.3	17.2	31.3	30.0	1.35	23.216	
500.0	498.8	495.4	494.2	1.0	1.0	-51.63	45.2	25.1	34.2	32.4	1.81	18.921	
600.0	597.1	593.6	590.8	1.4	1.3	-59.39	59.1	35.9	38.8	36.4	2.42	16.067	
700.0	694.3	691.6	686.2	1.8	1.8	-66.79	76.8	49.8	45.6	42.4	3.24	14.089	
800.0	790.2	789.4	780.0	2.4	2.3	-73.13	98.3	66.7	54.6	50.4	4.28	12.769	
900.0	884.4	886.8	872.1	3.0	2.9	-78.23	123.4	86.4	65.8	60.3	5.52	11.921	
1,000.0	976.8	983.9	962.1	3.7	3.6	-82.20	152.1	109.0	79.2	72.2	6.96	11.381	
1,100.0	1,067.1	1,080.7	1,049.8	4.6	4.4	-85.23	184.2	134.2	94.5	85.9	8.57	11.031 SF	

## Anticollision Report

<b>Company:</b>	EnCana Oil & Gas (USA) Inc	<b>Local Co-ordinate Reference:</b>	Well NP MF11D-3 O04 696 (was 14B-3)
<b>Project:</b>	North Piceance	<b>TVD Reference:</b>	WELL @ 6044.0ft (Original Well Elev)
<b>Reference Site:</b>	O04 696 (3rd)	<b>MD Reference:</b>	WELL @ 6044.0ft (Original Well Elev)
<b>Site Error:</b>	0.0ft	<b>North Reference:</b>	True
<b>Reference Well:</b>	NP MF11D-3 O04 696 (was 14B-3)	<b>Survey Calculation Method:</b>	Minimum Curvature
<b>Well Error:</b>	0.0ft	<b>Output errors are at</b>	2.00 sigma
<b>Reference Wellbore</b>	DD	<b>Database:</b>	EDM 5000.1 US Multi Users DB
<b>Reference Design:</b>	Plan #2	<b>Offset TVD Reference:</b>	Offset Datum

Offset Design												004 696 (3rd) - NP MF06C-3 004 696 (was 09C-4) - DD - Plan #2		Offset Site Error:		0.0 ft	
Survey Program: 0-MWD														Offset Well Error:		0.0 ft	
Reference		Offset		Semi Major Axis			Distance										
Measured Depth Depth (ft)	Vertical Depth (ft)	Measured Depth (ft)	Vertical Depth (ft)	Reference (ft)	Offset (ft)	Highside Toolface (°)	Offset Wellbore Centre +N/-S (ft)	+E/-W (ft)	Between Centres (ft)	Between Ellipses (ft)	Total Uncertainty Axis	Separation Factor	Warning				
0.0	0.0	0.0	0.0	0.0	0.0	25.14	33.4	15.7	36.9								
100.0	100.0	100.0	100.0	0.1	0.1	25.14	33.4	15.7	36.9	36.6	0.27	135.459					
200.0	200.0	200.0	200.0	0.3	0.3	25.14	33.4	15.7	36.9	36.3	0.62	59.358	CC				
300.0	300.0	298.2	298.2	0.5	0.5	-39.00	35.9	15.6	37.1	36.2	0.97	38.228	ES				
400.0	399.6	396.2	395.8	0.7	0.7	-50.06	43.4	15.7	38.9	37.6	1.35	28.921					
500.0	498.8	494.2	493.1	1.0	1.0	-61.99	54.7	18.4	43.4	41.6	1.80	24.161					
600.0	597.1	592.2	589.8	1.4	1.3	-71.95	69.3	24.9	50.4	48.0	2.40	20.986					
700.0	694.3	690.2	685.6	1.8	1.7	-79.62	87.4	35.0	59.7	56.5	3.21	18.591					
800.0	790.2	788.2	780.3	2.4	2.1	-85.30	108.7	48.7	70.8	66.6	4.22	16.779					
900.0	884.4	886.3	873.6	3.0	2.7	-89.45	133.3	65.9	83.6	78.2	5.42	15.410					
1,000.0	976.8	984.3	965.3	3.7	3.3	-92.47	161.1	86.7	97.7	90.9	6.81	14.353	SF				

# Anticollision Report

<b>Company:</b>	EnCana Oil & Gas (USA) Inc	<b>Local Co-ordinate Reference:</b>	Well NP MF11D-3 O04 696 (was 14B-3)
<b>Project:</b>	North Piceance	<b>TVD Reference:</b>	WELL @ 6044.0ft (Original Well Elev)
<b>Reference Site:</b>	O04 696 (3rd)	<b>MD Reference:</b>	WELL @ 6044.0ft (Original Well Elev)
<b>Site Error:</b>	0.0ft	<b>North Reference:</b>	True
<b>Reference Well:</b>	NP MF11D-3 O04 696 (was 14B-3)	<b>Survey Calculation Method:</b>	Minimum Curvature
<b>Well Error:</b>	0.0ft	<b>Output errors are at</b>	2.00 sigma
<b>Reference Wellbore</b>	DD	<b>Database:</b>	EDM 5000.1 US Multi Users DB
<b>Reference Design:</b>	Plan #2	<b>Offset TVD Reference:</b>	Offset Datum

Offset Design													Offset Site Error:		0.0 ft
Survey Program: 0-MWD													Offset Well Error:		0.0 ft
Reference		Offset		Semi Major Axis			Distance							Warning	
Measured Depth (ft)	Vertical Depth (ft)	Measured Depth (ft)	Vertical Depth (ft)	Reference (ft)	Offset (ft)	Highside Toolface (°)	Offset Wellbore Centre		Between Centres (ft)	Between Ellipses (ft)	Total Uncertainty Axis	Separation Factor			
							+N/-S (ft)	+E/-W (ft)							
0.0	0.0	0.0	0.0	0.0	0.0	38.73	28.3	22.7	36.3						
100.0	100.0	100.0	100.0	0.1	0.1	38.73	28.3	22.7	36.3	36.0	0.27	133.355			
200.0	200.0	200.0	200.0	0.3	0.3	38.73	28.3	22.7	36.3	35.7	0.62	58.437			
300.0	300.0	298.4	298.3	0.5	0.5	-20.95	29.3	25.1	36.1	35.1	0.97	37.234			
400.0	399.6	396.7	396.4	0.7	0.7	-19.51	32.1	32.1	35.6	34.2	1.33	26.755			
500.0	498.8	495.0	493.8	1.0	1.0	-17.80	37.2	43.5	34.8	33.1	1.70	20.517			
600.0	597.1	593.2	590.5	1.4	1.3	-18.76	46.1	58.2	34.2	32.1	2.08	16.400			
700.0	694.3	691.4	686.3	1.8	1.7	-22.80	58.7	76.0	33.8	31.3	2.54	13.280			
717.2	710.9	708.3	702.6	1.9	1.8	-23.80	61.3	79.4	33.8	31.1	2.64	12.786 CC			
800.0	790.2	789.6	780.8	2.4	2.2	-29.82	75.2	97.0	34.1	30.9	3.21	10.628 ES			
900.0	884.4	887.7	873.7	3.0	2.8	-39.23	95.4	120.9	35.7	31.4	4.25	8.395			
1,000.0	976.8	985.7	964.8	3.7	3.5	-49.70	119.2	147.8	39.2	33.5	5.76	6.810			
1,100.0	1,067.1	1,083.4	1,053.9	4.6	4.3	-59.70	146.7	177.5	45.1	37.5	7.64	5.909			
1,200.0	1,154.9	1,181.0	1,140.5	5.5	5.1	-68.20	177.6	209.9	53.6	43.8	9.74	5.500			
1,300.0	1,241.0	1,278.4	1,224.6	6.5	6.1	-73.87	211.8	245.0	64.8	53.0	11.84	5.476 SF			
1,400.0	1,326.9	1,375.3	1,305.8	7.5	7.1	-74.92	249.2	282.4	79.2	65.5	13.74	5.765			
1,500.0	1,412.9	1,471.2	1,383.4	8.4	8.2	-73.18	289.4	322.0	96.5	81.0	15.47	6.234			



# Anticollision Report

<b>Company:</b>	EnCana Oil & Gas (USA) Inc	<b>Local Co-ordinate Reference:</b>	Well NP MF11D-3 O04 696 (was 14B-3)
<b>Project:</b>	North Piceance	<b>TVD Reference:</b>	WELL @ 6044.0ft (Original Well Elev)
<b>Reference Site:</b>	O04 696 (3rd)	<b>MD Reference:</b>	WELL @ 6044.0ft (Original Well Elev)
<b>Site Error:</b>	0.0ft	<b>North Reference:</b>	True
<b>Reference Well:</b>	NP MF11D-3 O04 696 (was 14B-3)	<b>Survey Calculation Method:</b>	Minimum Curvature
<b>Well Error:</b>	0.0ft	<b>Output errors are at</b>	2.00 sigma
<b>Reference Wellbore</b>	DD	<b>Database:</b>	EDM 5000.1 US Multi Users DB
<b>Reference Design:</b>	Plan #2	<b>Offset TVD Reference:</b>	Offset Datum

Offset Design O04 696 (3rd) - NP MF11A-3 O04 696 (was 12C-3) - DD - Plan #2												Offset Site Error:	0.0 ft
Survey Program: 0-MWD												Offset Well Error:	0.0 ft
Reference		Offset		Semi Major Axis			Distance						Warning
Measured Depth (ft)	Vertical Depth (ft)	Measured Depth (ft)	Vertical Depth (ft)	Reference (ft)	Offset (ft)	Highside Toolface (°)	Offset Wellbore Centre +N/-S (ft)	+E/-W (ft)	Between Centres (ft)	Between Ellipses (ft)	Total Uncertainty Axis	Separation Factor	
0.0	0.0	0.0	0.0	0.0	0.0	37.75	22.3	17.2	28.2				
100.0	100.0	100.0	100.0	0.1	0.1	37.75	22.3	17.2	28.2	27.9	0.27	103.390	
200.0	200.0	200.0	200.0	0.3	0.3	37.75	22.3	17.2	28.2	27.5	0.62	45.306	
300.0	300.0	300.0	300.0	0.5	0.5	-24.65	22.3	17.2	25.7	24.8	0.97	26.514	
400.0	399.6	398.6	398.6	0.7	0.7	-32.86	24.2	18.9	21.4	20.1	1.33	16.075	
500.0	498.8	497.4	497.1	1.0	0.9	-49.41	30.1	23.8	18.8	17.0	1.77	10.594	
530.8	529.1	527.9	527.3	1.1	1.0	-56.09	32.7	26.0	18.6	16.6	1.95	9.503 CC, ES	
600.0	597.1	596.4	595.2	1.4	1.1	-71.87	39.8	32.0	19.6	17.2	2.42	8.101	
700.0	694.3	695.5	692.7	1.8	1.5	-90.68	53.5	43.5	24.8	21.6	3.27	7.607 SF	
800.0	790.2	794.6	789.1	2.4	1.9	-102.01	71.0	58.2	33.6	29.3	4.22	7.951	
900.0	884.4	893.8	884.2	3.0	2.4	-108.10	92.4	76.1	44.8	39.5	5.31	8.445	
1,000.0	976.8	993.2	978.1	3.7	3.0	-111.30	117.5	97.3	58.0	51.4	6.53	8.874	
1,100.0	1,067.1	1,093.9	1,071.3	4.6	3.7	-113.25	145.5	122.9	71.4	63.5	7.94	8.988	
1,200.0	1,154.9	1,195.0	1,163.0	5.5	4.5	-114.65	175.6	153.1	84.4	74.9	9.52	8.873	
1,300.0	1,241.0	1,296.8	1,253.0	6.5	5.4	-115.15	207.9	188.0	96.4	85.2	11.24	8.578	

# Anticollision Report

<b>Company:</b>	EnCana Oil & Gas (USA) Inc	<b>Local Co-ordinate Reference:</b>	Well NP MF11D-3 O04 696 (was 14B-3)
<b>Project:</b>	North Piceance	<b>TVD Reference:</b>	WELL @ 6044.0ft (Original Well Elev)
<b>Reference Site:</b>	O04 696 (3rd)	<b>MD Reference:</b>	WELL @ 6044.0ft (Original Well Elev)
<b>Site Error:</b>	0.0ft	<b>North Reference:</b>	True
<b>Reference Well:</b>	NP MF11D-3 O04 696 (was 14B-3)	<b>Survey Calculation Method:</b>	Minimum Curvature
<b>Well Error:</b>	0.0ft	<b>Output errors are at</b>	2.00 sigma
<b>Reference Wellbore</b>	DD	<b>Database:</b>	EDM 5000.1 US Multi Users DB
<b>Reference Design:</b>	Plan #2	<b>Offset TVD Reference:</b>	Offset Datum

Offset Design												O04 696 (3rd) - NP MF11B-3 O04 696 (was 14A-3) - DD - Plan #2		Offset Site Error:		0.0 ft
Survey Program:												0-MWD		Offset Well Error:		0.0 ft
Reference		Offset		Semi Major Axis			Distance									
Measured Depth	Vertical Depth	Measured Depth	Vertical Depth	Reference	Offset	Highside Toolface	Offset Wellbore Centre		Between Centres	Between Ellipses	Total Uncertainty Axis	Separation Factor	Warning			
(ft)	(ft)	(ft)	(ft)	(ft)	(ft)	(°)	+N/-S (ft)	+E/-W (ft)	(ft)	(ft)						
0.0	0.0	0.0	0.0	0.0	0.0	37.75	6.1	4.7	7.7							
100.0	100.0	100.0	100.0	0.1	0.1	37.75	6.1	4.7	7.7	7.4	0.27	28.197				
200.0	200.0	200.0	200.0	0.3	0.3	37.75	6.1	4.7	7.7	7.1	0.62	12.356	CC			
300.0	300.0	299.6	299.6	0.5	0.5	-24.52	7.6	6.8	7.8	6.8	0.97	8.000				
400.0	399.6	399.2	398.9	0.7	0.7	-30.55	12.2	13.0	8.1	6.8	1.34	6.057	ES			
500.0	498.8	498.8	497.6	1.0	1.0	-39.35	19.9	23.5	8.9	7.1	1.78	4.970				
600.0	597.1	598.4	595.5	1.4	1.4	-49.13	30.7	38.0	10.2	7.8	2.40	4.248				
700.0	694.3	698.0	692.4	1.8	1.8	-58.20	44.5	56.6	12.2	9.0	3.26	3.751				
800.0	790.2	797.5	787.8	2.4	2.3	-65.69	61.2	79.2	15.0	10.6	4.36	3.436				
900.0	884.4	897.1	881.7	3.0	3.0	-71.50	80.9	105.8	18.4	12.8	5.67	3.248				
1,000.0	976.8	996.6	973.7	3.7	3.7	-75.90	103.4	136.3	22.5	15.4	7.19	3.137				
1,100.0	1,067.1	1,096.0	1,063.5	4.6	4.5	-79.22	128.8	170.6	27.3	18.4	8.89	3.070				
1,200.0	1,154.9	1,195.5	1,151.0	5.5	5.5	-81.74	156.9	208.6	32.6	21.8	10.78	3.026	SF			
1,300.0	1,241.0	1,294.8	1,235.9	6.5	6.5	-81.57	187.6	250.2	38.7	26.0	12.71	3.045				
1,400.0	1,326.9	1,393.8	1,317.6	7.5	7.6	-75.47	220.8	295.0	46.3	31.9	14.39	3.218				
1,500.0	1,412.9	1,492.1	1,395.8	8.4	8.7	-66.53	256.2	342.8	56.6	41.0	15.53	3.642				
1,600.0	1,498.9	1,591.1	1,473.7	9.4	9.9	-59.28	292.5	392.0	68.7	52.4	16.35	4.201				
1,700.0	1,584.9	1,690.0	1,551.5	10.4	11.1	-54.24	328.9	441.1	81.6	64.5	17.15	4.759				
1,800.0	1,670.8	1,789.0	1,629.3	11.4	12.3	-50.60	365.2	490.3	95.0	77.0	17.96	5.288				

# Anticollision Report

<b>Company:</b>	EnCana Oil & Gas (USA) Inc	<b>Local Co-ordinate Reference:</b>	Well NP MF11D-3 O04 696 (was 14B-3)
<b>Project:</b>	North Piceance	<b>TVD Reference:</b>	WELL @ 6044.0ft (Original Well Elev)
<b>Reference Site:</b>	O04 696 (3rd)	<b>MD Reference:</b>	WELL @ 6044.0ft (Original Well Elev)
<b>Site Error:</b>	0.0ft	<b>North Reference:</b>	True
<b>Reference Well:</b>	NP MF11D-3 O04 696 (was 14B-3)	<b>Survey Calculation Method:</b>	Minimum Curvature
<b>Well Error:</b>	0.0ft	<b>Output errors are at</b>	2.00 sigma
<b>Reference Wellbore</b>	DD	<b>Database:</b>	EDM 5000.1 US Multi Users DB
<b>Reference Design:</b>	Plan #2	<b>Offset TVD Reference:</b>	Offset Datum

Offset Design O04 696 (3rd) - NP MF11E-3 O04 696 (was 13A-3) - DD - Plan #2													Offset Site Error:	0.0 ft
Survey Program: 0-MWD													Offset Well Error:	0.0 ft
Reference		Offset		Semi Major Axis		Highside Toolface (°)	Distance		Total Uncertainty Axis	Separation Factor	Warning			
Measured Depth (ft)	Vertical Depth (ft)	Measured Depth (ft)	Vertical Depth (ft)	Reference (ft)	Offset (ft)		Offset Wellbore Centre +N/-S (ft)	+E/-W (ft)						
0.0	0.0	0.0	0.0	0.0	0.0	-120.63	-11.1	-18.8	21.8					
100.0	100.0	100.0	100.0	0.1	0.1	-120.63	-11.1	-18.8	21.8	21.6	0.27	80.238		
200.0	200.0	200.0	200.0	0.3	0.3	-120.63	-11.1	-18.8	21.8	21.2	0.62	35.160		
300.0	300.0	301.2	301.1	0.5	0.5	178.61	-10.0	-16.4	21.8	20.9	0.97	22.461		
400.0	399.6	402.3	401.9	0.7	0.7	176.77	-6.6	-9.1	21.8	20.5	1.32	16.485		
462.0	461.2	465.0	464.2	0.9	0.9	175.02	-3.4	-2.1	21.8	20.2	1.54	14.105 CC		
500.0	498.8	503.4	502.1	1.0	1.0	173.71	-1.0	3.0	21.8	20.1	1.68	12.990		
600.0	597.1	604.5	601.5	1.4	1.4	169.45	6.8	19.9	21.9	19.8	2.06	10.633		
700.0	694.3	705.6	699.7	1.8	1.8	164.08	16.8	41.6	22.2	19.7	2.52	8.807		
800.0	790.2	806.7	796.5	2.4	2.4	157.81	29.0	67.9	22.8	19.6	3.16	7.219 ES		
900.0	884.4	907.7	891.6	3.0	3.1	150.95	43.4	98.8	23.8	19.7	4.09	5.827		
1,000.0	976.8	1,008.7	984.7	3.7	3.8	143.89	59.8	134.2	25.4	20.0	5.39	4.709		
1,100.0	1,067.1	1,109.6	1,075.6	4.6	4.7	137.01	78.2	174.0	27.6	20.5	7.08	3.895		
1,200.0	1,154.9	1,210.4	1,163.9	5.5	5.6	130.65	98.6	218.1	30.4	21.3	9.09	3.340		
1,300.0	1,241.0	1,310.3	1,250.4	6.5	6.6	127.31	119.7	263.5	34.4	23.5	10.98	3.136		
1,400.0	1,326.9	1,410.2	1,336.8	7.5	7.6	124.88	140.8	309.0	38.7	25.8	12.88	3.005		
1,500.0	1,412.9	1,510.1	1,423.2	8.4	8.5	122.94	161.8	354.4	43.0	28.2	14.79	2.910		
1,600.0	1,498.9	1,610.0	1,509.7	9.4	9.5	121.35	182.9	399.9	47.4	30.7	16.71	2.838		
1,700.0	1,584.9	1,709.9	1,596.1	10.4	10.5	120.04	203.9	445.3	51.8	33.2	18.62	2.782		
1,800.0	1,670.8	1,809.8	1,682.6	11.4	11.4	118.92	225.0	490.7	56.2	35.7	20.54	2.738		
1,900.0	1,756.8	1,909.7	1,769.0	12.4	12.4	117.97	246.0	536.2	60.7	38.2	22.45	2.701		
2,000.0	1,842.8	2,009.6	1,855.4	13.4	13.4	117.16	267.1	581.6	65.1	40.7	24.37	2.672		
2,100.0	1,928.7	2,109.5	1,941.9	14.3	14.3	116.44	288.1	627.1	69.6	43.3	26.29	2.647		
2,200.0	2,014.7	2,209.4	2,028.3	15.3	15.3	115.81	309.2	672.5	74.0	45.8	28.20	2.625		
2,300.0	2,100.7	2,309.3	2,114.7	16.3	16.3	115.26	330.3	717.9	78.5	48.4	30.12	2.607		
2,400.0	2,186.6	2,409.2	2,201.2	17.3	17.3	114.76	351.3	763.4	83.0	51.0	32.03	2.591		
2,500.0	2,272.6	2,509.1	2,287.6	18.3	18.2	114.31	372.4	808.8	87.5	53.6	33.95	2.578		
2,600.0	2,358.6	2,609.0	2,374.0	19.3	19.2	113.91	393.4	854.3	92.0	56.1	35.86	2.565		
2,700.0	2,444.5	2,708.9	2,460.5	20.3	20.2	113.55	414.5	899.7	96.5	58.7	37.78	2.555 SF		

## Anticollision Report

<b>Company:</b>	EnCana Oil & Gas (USA) Inc	<b>Local Co-ordinate Reference:</b>	Well NP MF11D-3 O04 696 (was 14B-3)
<b>Project:</b>	North Piceance	<b>TVD Reference:</b>	WELL @ 6044.0ft (Original Well Elev)
<b>Reference Site:</b>	O04 696 (3rd)	<b>MD Reference:</b>	WELL @ 6044.0ft (Original Well Elev)
<b>Site Error:</b>	0.0ft	<b>North Reference:</b>	True
<b>Reference Well:</b>	NP MF11D-3 O04 696 (was 14B-3)	<b>Survey Calculation Method:</b>	Minimum Curvature
<b>Well Error:</b>	0.0ft	<b>Output errors are at</b>	2.00 sigma
<b>Reference Wellbore</b>	DD	<b>Database:</b>	EDM 5000.1 US Multi Users DB
<b>Reference Design:</b>	Plan #2	<b>Offset TVD Reference:</b>	Offset Datum

Offset Design												Offset Site Error:		0.0 ft	
Survey Program: 0-MWD												Offset Well Error:		0.0 ft	
Reference		Offset		Semi Major Axis			Distance								
Measured Depth	Vertical Depth	Measured Depth	Vertical Depth	Reference	Offset	Highside Toolface	Offset Wellbore Centre		Between Centres	Between Ellipses	Total Uncertainty	Separation	Warning		
Depth (ft)	Depth (ft)	Depth (ft)	Depth (ft)	(ft)	(ft)	(°)	+N/-S (ft)	+E/-W (ft)	(ft)	(ft)	Axis	Factor			
0.0	0.0	0.0	0.0	0.0	0.0	-126.20	-17.2	-23.5	29.1						
100.0	100.0	100.0	100.0	0.1	0.1	-126.20	-17.2	-23.5	29.1	28.8	0.27	106.956			
200.0	200.0	200.0	200.0	0.3	0.3	-126.20	-17.2	-23.5	29.1	28.5	0.62	46.868	CC, ES		
300.0	300.0	300.0	300.0	0.5	0.5	174.16	-17.2	-23.5	31.7	30.8	0.97	32.717			
400.0	399.6	401.5	401.5	0.7	0.7	173.87	-16.5	-20.9	37.1	35.7	1.32	28.077			
500.0	498.8	503.3	502.9	1.0	0.9	171.69	-14.6	-13.0	42.7	41.0	1.68	25.455			
600.0	597.1	605.3	604.0	1.4	1.2	168.33	-11.3	0.1	48.8	46.7	2.06	23.650			
700.0	694.3	707.4	704.3	1.8	1.5	164.25	-6.7	18.5	55.4	52.9	2.51	22.051			
800.0	790.2	809.7	803.7	2.4	2.0	159.79	-0.8	42.1	62.8	59.7	3.09	20.327			
900.0	884.4	912.1	901.6	3.0	2.6	155.21	6.4	70.8	71.1	67.2	3.86	18.430			
1,000.0	976.8	1,014.5	997.9	3.7	3.2	150.69	14.9	104.6	80.4	75.5	4.87	16.518			
1,100.0	1,067.1	1,116.9	1,092.2	4.6	4.0	146.35	24.6	143.4	90.8	84.7	6.15	14.776	SF		

# Anticollision Report

<b>Company:</b>	EnCana Oil & Gas (USA) Inc	<b>Local Co-ordinate Reference:</b>	Well NP MF11D-3 O04 696 (was 14B-3)
<b>Project:</b>	North Piceance	<b>TVD Reference:</b>	WELL @ 6044.0ft (Original Well Elev)
<b>Reference Site:</b>	O04 696 (3rd)	<b>MD Reference:</b>	WELL @ 6044.0ft (Original Well Elev)
<b>Site Error:</b>	0.0ft	<b>North Reference:</b>	True
<b>Reference Well:</b>	NP MF11D-3 O04 696 (was 14B-3)	<b>Survey Calculation Method:</b>	Minimum Curvature
<b>Well Error:</b>	0.0ft	<b>Output errors are at</b>	2.00 sigma
<b>Reference Wellbore</b>	DD	<b>Database:</b>	EDM 5000.1 US Multi Users DB
<b>Reference Design:</b>	Plan #2	<b>Offset TVD Reference:</b>	Offset Datum

Offset Design O04 696 (3rd) - NP MF14A-3 O04 696 (was 13B-3) - DD - Plan #2												Offset Site Error:	0.0 ft
Survey Program: 0-MWD												Offset Well Error:	0.0 ft
Reference		Offset		Semi Major Axis			Distance						Warning
Measured Depth (ft)	Vertical Depth (ft)	Measured Depth (ft)	Vertical Depth (ft)	Reference (ft)	Offset (ft)	Highside Toolface (°)	Offset Wellbore Centre +N/-S (ft)	+E/-W (ft)	Between Centres (ft)	Between Ellipses (ft)	Total Uncertainty Axis	Separation Factor	
0.0	0.0	0.0	0.0	0.0	0.0	-142.25	-16.2	-12.5	20.5				
100.0	100.0	100.0	100.0	0.1	0.1	-142.25	-16.2	-12.5	20.5	20.2	0.27	75.193	
200.0	200.0	200.0	200.0	0.3	0.3	-142.25	-16.2	-12.5	20.5	19.9	0.62	32.950	CC, ES
300.0	300.0	300.8	300.7	0.5	0.5	155.43	-15.7	-9.9	21.0	20.0	0.98	21.455	
400.0	399.6	401.5	401.1	0.7	0.7	149.52	-14.4	-2.1	22.6	21.2	1.37	16.510	
500.0	498.8	502.1	500.9	1.0	1.0	141.50	-12.2	11.0	25.7	23.9	1.86	13.834	
600.0	597.1	602.6	599.6	1.4	1.4	133.26	-9.1	29.1	30.8	28.2	2.53	12.162	
700.0	694.3	702.9	697.1	1.8	1.8	126.04	-5.1	52.4	37.8	34.4	3.41	11.088	
800.0	790.2	802.9	792.9	2.4	2.4	120.24	-0.3	80.5	46.9	42.4	4.50	10.417	
900.0	884.4	902.6	886.9	3.0	3.0	115.73	5.4	113.4	57.9	52.1	5.79	10.001	
1,000.0	976.8	1,002.0	978.7	3.7	3.8	112.24	11.8	151.0	70.9	63.6	7.28	9.737	
1,100.0	1,067.1	1,101.1	1,068.0	4.6	4.6	109.52	19.0	193.1	85.6	76.6	8.95	9.561	SF

## Anticollision Report

<b>Company:</b>	EnCana Oil & Gas (USA) Inc	<b>Local Co-ordinate Reference:</b>	Well NP MF11D-3 O04 696 (was 14B-3)
<b>Project:</b>	North Piceance	<b>TVD Reference:</b>	WELL @ 6044.0ft (Original Well Elev)
<b>Reference Site:</b>	O04 696 (3rd)	<b>MD Reference:</b>	WELL @ 6044.0ft (Original Well Elev)
<b>Site Error:</b>	0.0ft	<b>North Reference:</b>	True
<b>Reference Well:</b>	NP MF11D-3 O04 696 (was 14B-3)	<b>Survey Calculation Method:</b>	Minimum Curvature
<b>Well Error:</b>	0.0ft	<b>Output errors are at</b>	2.00 sigma
<b>Reference Wellbore</b>	DD	<b>Database:</b>	EDM 5000.1 US Multi Users DB
<b>Reference Design:</b>	Plan #2	<b>Offset TVD Reference:</b>	Offset Datum

Offset Design		O04 696 (3rd) - NP MF14C-3 O04 696 (was 14D-3) - DD - Plan #2											Offset Site Error:		0.0 ft			
Survey Program:		0-MWD													Offset Well Error:		0.0 ft	
Reference		Offset		Semi Major Axis			Distance											
Measured Depth	Vertical Depth	Measured Depth	Vertical Depth	Reference	Offset	Highside Toolface	Offset Wellbore Centre		Between Centres	Between Ellipses	Total Uncertainty Axis	Separation Factor	Warning					
(ft)	(ft)	(ft)	(ft)	(ft)	(ft)	(°)	+N/-S (ft)	+E/-W (ft)	(ft)	(ft)								
0.0	0.0	0.0	0.0	0.0	0.0	-142.25	-22.3	-17.2	28.2									
100.0	100.0	100.0	100.0	0.1	0.1	-142.25	-22.3	-17.2	28.2	27.9	0.27	103.390						
200.0	200.0	200.0	200.0	0.3	0.3	-142.25	-22.3	-17.2	28.2	27.5	0.62	45.306	CC, ES					
300.0	300.0	300.9	300.9	0.5	0.5	155.47	-22.2	-14.6	28.9	28.0	0.98	29.565						
400.0	399.6	401.7	401.3	0.7	0.7	149.75	-22.1	-6.6	31.5	30.1	1.38	22.882						
500.0	498.8	502.3	501.1	1.0	1.0	142.16	-21.8	6.6	36.3	34.4	1.88	19.342						
600.0	597.1	602.6	599.6	1.4	1.4	134.51	-21.5	25.0	43.8	41.2	2.55	17.200						
700.0	694.3	702.5	696.7	1.8	1.8	127.89	-21.1	48.5	54.1	50.7	3.41	15.857						
800.0	790.2	801.9	792.0	2.4	2.4	122.58	-20.5	76.8	67.2	62.8	4.48	15.022						
900.0	884.4	900.7	885.1	3.0	3.0	118.44	-19.9	109.8	83.1	77.4	5.73	14.503	SF					

## Anticollision Report

<b>Company:</b>	EnCana Oil & Gas (USA) Inc	<b>Local Co-ordinate Reference:</b>	Well NP MF11D-3 O04 696 (was 14B-3)
<b>Project:</b>	North Piceance	<b>TVD Reference:</b>	WELL @ 6044.0ft (Original Well Elev)
<b>Reference Site:</b>	O04 696 (3rd)	<b>MD Reference:</b>	WELL @ 6044.0ft (Original Well Elev)
<b>Site Error:</b>	0.0ft	<b>North Reference:</b>	True
<b>Reference Well:</b>	NP MF11D-3 O04 696 (was 14B-3)	<b>Survey Calculation Method:</b>	Minimum Curvature
<b>Well Error:</b>	0.0ft	<b>Output errors are at</b>	2.00 sigma
<b>Reference Wellbore</b>	DD	<b>Database:</b>	EDM 5000.1 US Multi Users DB
<b>Reference Design:</b>	Plan #2	<b>Offset TVD Reference:</b>	Offset Datum

<b>Offset Design</b> O04 696 (3rd) - NP MF14D-3 O04 696 (was 19A-3) - DD - Plan #2													<b>Offset Site Error:</b> 0.0 ft
Survey Program: 0-MWD													<b>Offset Well Error:</b> 0.0 ft
Reference		Offset		Semi Major Axis		Distance							
Measured Depth (ft)	Vertical Depth (ft)	Measured Depth (ft)	Vertical Depth (ft)	Reference (ft)	Offset (ft)	Highside Toolface (°)	Offset Wellbore Centre +N/-S (ft)	+E/-W (ft)	Between Centres (ft)	Between Ellipses (ft)	Total Uncertainty Axis	Separation Factor	Warning
0.0	0.0	0.0	0.0	0.0	0.0	-131.94	-32.4	-36.0	48.4				
100.0	100.0	100.0	100.0	0.1	0.1	-131.94	-32.4	-36.0	48.4	48.2	0.27	177.914	
200.0	200.0	200.0	200.0	0.3	0.3	-131.94	-32.4	-36.0	48.4	47.8	0.62	77.963 CC, ES	
300.0	300.0	300.0	300.0	0.5	0.5	168.51	-32.4	-36.0	51.0	50.0	0.97	52.585	
400.0	399.6	401.8	401.7	0.7	0.7	168.11	-32.6	-33.3	56.9	55.5	1.33	42.903	
500.0	498.8	503.6	503.2	1.0	0.9	165.24	-33.3	-25.2	64.2	62.5	1.71	37.657	
600.0	597.1	605.3	604.1	1.4	1.2	160.83	-34.4	-11.8	73.4	71.3	2.15	34.101	
700.0	694.3	706.8	703.7	1.8	1.5	155.69	-36.0	7.0	84.9	82.2	2.73	31.106	
800.0	790.2	807.9	801.9	2.4	2.0	150.41	-37.9	30.9	99.0	95.5	3.49	28.349 SF	

# Anticollision Report

<b>Company:</b>	EnCana Oil & Gas (USA) Inc	<b>Local Co-ordinate Reference:</b>	Well NP MF11D-3 O04 696 (was 14B-3)
<b>Project:</b>	North Piceance	<b>TVD Reference:</b>	WELL @ 6044.0ft (Original Well Elev)
<b>Reference Site:</b>	O04 696 (3rd)	<b>MD Reference:</b>	WELL @ 6044.0ft (Original Well Elev)
<b>Site Error:</b>	0.0ft	<b>North Reference:</b>	True
<b>Reference Well:</b>	NP MF11D-3 O04 696 (was 14B-3)	<b>Survey Calculation Method:</b>	Minimum Curvature
<b>Well Error:</b>	0.0ft	<b>Output errors are at</b>	2.00 sigma
<b>Reference Wellbore</b>	DD	<b>Database:</b>	EDM 5000.1 US Multi Users DB
<b>Reference Design:</b>	Plan #2	<b>Offset TVD Reference:</b>	Offset Datum

Offset Design		O04 696 (3rd) - NP MF14E-3 O04 696 (was 19B-3) - DD - Plan #2											Offset Site Error:		0.0 ft			
Survey Program:		0-MWD													Offset Well Error:		0.0 ft	
Reference		Offset		Semi Major Axis			Distance											
Measured Depth	Vertical Depth	Measured Depth	Vertical Depth	Reference	Offset	Highside Toolface	Offset Wellbore Centre		Between Centres	Between Ellipses	Total Uncertainty Axis	Separation Factor	Warning					
(ft)	(ft)	(ft)	(ft)	(ft)	(ft)	(°)	+N/-S (ft)	+E/-W (ft)	(ft)	(ft)								
0.0	0.0	0.0	0.0	0.0	0.0	-141.51	-37.4	-29.8	47.8									
100.0	100.0	100.0	100.0	0.1	0.1	-141.51	-37.4	-29.8	47.8	47.6	0.27	175.659						
200.0	200.0	200.0	200.0	0.3	0.3	-141.51	-37.4	-29.8	47.8	47.2	0.62	76.974	CC, ES					
300.0	300.0	301.0	300.9	0.5	0.5	156.61	-38.1	-27.2	49.2	48.3	0.98	50.213						
400.0	399.6	401.7	401.3	0.7	0.7	151.98	-40.2	-19.5	53.7	52.3	1.38	38.798						
500.0	498.8	501.9	500.6	1.0	1.0	145.82	-43.7	-6.8	61.7	59.8	1.88	32.781						
600.0	597.1	601.4	598.4	1.4	1.4	139.53	-48.5	10.8	73.8	71.2	2.53	29.210						
700.0	694.3	699.9	694.3	1.8	1.8	133.94	-54.5	33.0	90.0	86.7	3.34	26.976	SF					



# Anticollision Report

<b>Company:</b>	EnCana Oil & Gas (USA) Inc	<b>Local Co-ordinate Reference:</b>	Well NP MF11D-3 O04 696 (was 14B-3)
<b>Project:</b>	North Piceance	<b>TVD Reference:</b>	WELL @ 6044.0ft (Original Well Elev)
<b>Reference Site:</b>	O04 696 (3rd)	<b>MD Reference:</b>	WELL @ 6044.0ft (Original Well Elev)
<b>Site Error:</b>	0.0ft	<b>North Reference:</b>	True
<b>Reference Well:</b>	NP MF11D-3 O04 696 (was 14B-3)	<b>Survey Calculation Method:</b>	Minimum Curvature
<b>Well Error:</b>	0.0ft	<b>Output errors are at</b>	2.00 sigma
<b>Reference Wellbore</b>	DD	<b>Database:</b>	EDM 5000.1 US Multi Users DB
<b>Reference Design:</b>	Plan #2	<b>Offset TVD Reference:</b>	Offset Datum

<b>Offset Design</b> O04 696 (3rd) - NP MF15A-4 O04 696 (was 11D-3) - DD - Plan #2												<b>Offset Site Error:</b>	0.0 ft
Survey Program: 0-MWD												<b>Offset Well Error:</b>	0.0 ft
Reference		Offset		Semi Major Axis			Distance				Total Uncertainty Axis	Separation Factor	Warning
Measured Depth (ft)	Vertical Depth (ft)	Measured Depth (ft)	Vertical Depth (ft)	Reference (ft)	Offset (ft)	Highside Toolface (°)	Offset Wellbore Centre +N/-S (ft)	+E/-W (ft)	Between Centres (ft)	Between Ellipses (ft)			
0.0	0.0	0.0	0.0	0.0	0.0	-51.08	5.1	-6.3	8.1				
100.0	100.0	100.0	100.0	0.1	0.1	-51.08	5.1	-6.3	8.1	7.8	0.27	29.579	
200.0	200.0	200.0	200.0	0.3	0.3	-51.08	5.1	-6.3	8.1	7.4	0.62	12.962 CC, ES	
300.0	300.0	299.6	299.5	0.5	0.5	-115.99	7.6	-7.0	11.2	10.2	0.98	11.408 SF	
400.0	399.6	398.5	398.1	0.7	0.7	-121.46	15.0	-9.1	20.7	19.3	1.38	14.969	
500.0	498.8	496.2	495.0	1.0	1.0	-124.09	27.1	-12.6	36.6	34.8	1.86	19.657	
600.0	597.1	592.2	589.4	1.4	1.3	-125.19	43.6	-17.4	58.8	56.3	2.44	24.088	
700.0	694.3	686.8	681.6	1.8	1.7	-125.74	64.0	-23.3	86.8	83.7	3.11	27.929	

## Anticollision Report

<b>Company:</b>	EnCana Oil & Gas (USA) Inc	<b>Local Co-ordinate Reference:</b>	Well NP MF11D-3 O04 696 (was 14B-3)
<b>Project:</b>	North Piceance	<b>TVD Reference:</b>	WELL @ 6044.0ft (Original Well Elev)
<b>Reference Site:</b>	O04 696 (3rd)	<b>MD Reference:</b>	WELL @ 6044.0ft (Original Well Elev)
<b>Site Error:</b>	0.0ft	<b>North Reference:</b>	True
<b>Reference Well:</b>	NP MF11D-3 O04 696 (was 14B-3)	<b>Survey Calculation Method:</b>	Minimum Curvature
<b>Well Error:</b>	0.0ft	<b>Output errors are at</b>	2.00 sigma
<b>Reference Wellbore</b>	DD	<b>Database:</b>	EDM 5000.1 US Multi Users DB
<b>Reference Design:</b>	Plan #2	<b>Offset TVD Reference:</b>	Offset Datum

<b>Offset Design</b> O04 696 (3rd) - NP MF19A-3 O04 696 (was 17B-4) - DD - Plan #2													<b>Offset Site Error:</b> 0.0 ft
Survey Program: 0-MWD													<b>Offset Well Error:</b> 0.0 ft
Reference		Offset		Semi Major Axis		Distance							
Measured Depth (ft)	Vertical Depth (ft)	Measured Depth (ft)	Vertical Depth (ft)	Reference (ft)	Offset (ft)	Highside Toolface (°)	Offset Wellbore Centre +N/-S (ft)	+E/-W (ft)	Between Centres (ft)	Between Ellipses (ft)	Total Uncertainty Axis	Separation Factor	Warning
0.0	0.0	0.0	0.0	0.0	0.0	-134.09	-39.5	-40.7	56.7				
100.0	100.0	100.0	100.0	0.1	0.1	-134.09	-39.5	-40.7	56.7	56.4	0.27	208.287	
200.0	200.0	200.0	200.0	0.3	0.3	-134.09	-39.5	-40.7	56.7	56.1	0.62	91.272 CC, ES	
300.0	300.0	300.6	300.6	0.5	0.5	165.78	-39.7	-40.1	59.0	58.0	0.97	60.706	
400.0	399.6	401.6	401.4	0.7	0.7	163.09	-41.8	-35.2	64.6	63.3	1.34	48.155	
500.0	498.8	502.1	501.4	1.0	0.9	158.21	-45.9	-25.4	73.7	71.9	1.77	41.596	
600.0	597.1	601.9	599.9	1.4	1.2	152.44	-52.0	-10.9	86.8	84.5	2.31	37.549 SF	

## Anticollision Report

<b>Company:</b>	EnCana Oil & Gas (USA) Inc	<b>Local Co-ordinate Reference:</b>	Well NP MF11D-3 O04 696 (was 14B-3)
<b>Project:</b>	North Piceance	<b>TVD Reference:</b>	WELL @ 6044.0ft (Original Well Elev)
<b>Reference Site:</b>	O04 696 (3rd)	<b>MD Reference:</b>	WELL @ 6044.0ft (Original Well Elev)
<b>Site Error:</b>	0.0ft	<b>North Reference:</b>	True
<b>Reference Well:</b>	NP MF11D-3 O04 696 (was 14B-3)	<b>Survey Calculation Method:</b>	Minimum Curvature
<b>Well Error:</b>	0.0ft	<b>Output errors are at</b>	2.00 sigma
<b>Reference Wellbore</b>	DD	<b>Database:</b>	EDM 5000.1 US Multi Users DB
<b>Reference Design:</b>	Plan #2	<b>Offset TVD Reference:</b>	Offset Datum

<b>Offset Design</b> O04 696 (3rd) - NP MF19C-3 O04 696 (was 20B-3) - DD - Plan #2													Offset Site Error:	0.0 ft
Survey Program: 0-MWD													Offset Well Error:	0.0 ft
Reference		Offset		Semi Major Axis			Distance							
Measured Depth (ft)	Vertical Depth (ft)	Measured Depth (ft)	Vertical Depth (ft)	Reference (ft)	Offset (ft)	Highside Toolface (°)	Offset Wellbore Centre +N/-S (ft)	+E/-W (ft)	Between Centres (ft)	Between Ellipses (ft)	Total Uncertainty Axis	Separation Factor	Warning	
0.0	0.0	0.0	0.0	0.0	0.0	-142.25	-44.5	-34.5	56.3					
100.0	100.0	100.0	100.0	0.1	0.1	-142.25	-44.5	-34.5	56.3	56.0	0.27	206.780		
200.0	200.0	200.0	200.0	0.3	0.3	-142.25	-44.5	-34.5	56.3	55.7	0.62	90.612 CC, ES		
300.0	300.0	300.3	300.3	0.5	0.5	155.99	-45.9	-32.2	58.4	57.4	0.98	59.582		
400.0	399.6	400.2	399.8	0.7	0.7	151.81	-49.8	-25.4	65.0	63.6	1.38	46.922		
500.0	498.8	499.3	498.0	1.0	1.0	146.48	-56.4	-14.3	76.4	74.5	1.88	40.738		
600.0	597.1	597.1	594.3	1.4	1.4	141.23	-65.3	1.0	93.1	90.6	2.49	37.416 SF		

## Anticollision Report

<b>Company:</b>	EnCana Oil & Gas (USA) Inc	<b>Local Co-ordinate Reference:</b>	Well NP MF11D-3 O04 696 (was 14B-3)
<b>Project:</b>	North Piceance	<b>TVD Reference:</b>	WELL @ 6044.0ft (Original Well Elev)
<b>Reference Site:</b>	O04 696 (3rd)	<b>MD Reference:</b>	WELL @ 6044.0ft (Original Well Elev)
<b>Site Error:</b>	0.0ft	<b>North Reference:</b>	True
<b>Reference Well:</b>	NP MF11D-3 O04 696 (was 14B-3)	<b>Survey Calculation Method:</b>	Minimum Curvature
<b>Well Error:</b>	0.0ft	<b>Output errors are at</b>	2.00 sigma
<b>Reference Wellbore</b>	DD	<b>Database:</b>	EDM 5000.1 US Multi Users DB
<b>Reference Design:</b>	Plan #2	<b>Offset TVD Reference:</b>	Offset Datum

Offset Design													O04 696 (3rd) - NP MF19D-3 O04 696 (was 19C-3) - DD - Plan #2		Offset Site Error:		0.0 ft	
Survey Program: 0-MWD													Offset Well Error:		0.0 ft			
Reference		Offset		Semi Major Axis			Distance							Warning				
Measured Depth	Vertical Depth	Measured Depth	Vertical Depth	Reference	Offset	Highside Toolface	Offset Wellbore Centre +N/-S	+E/-W	Between Centres	Between Ellipses	Total Uncertainty Axis	Separation Factor						
(ft)	(ft)	(ft)	(ft)	(ft)	(ft)	(°)	(ft)	(ft)	(ft)	(ft)								
0.0	0.0	0.0	0.0	0.0	0.0	-135.73	-54.6	-53.3	76.3									
100.0	100.0	100.0	100.0	0.1	0.1	-135.73	-54.6	-53.3	76.3	76.0	0.27	280.246						
200.0	200.0	200.0	200.0	0.3	0.3	-135.73	-54.6	-53.3	76.3	75.7	0.62	122.805 CC, ES						
300.0	300.0	300.0	300.0	0.5	0.5	164.62	-54.6	-53.3	78.8	77.9	0.97	81.245						
400.0	399.6	399.7	399.7	0.7	0.7	165.52	-55.1	-52.8	86.4	85.1	1.32	65.468						
500.0	498.8	499.1	499.0	1.0	0.8	164.30	-58.6	-49.0	98.8	97.1	1.69	58.607 SF						

## Anticollision Report

<b>Company:</b>	EnCana Oil & Gas (USA) Inc	<b>Local Co-ordinate Reference:</b>	Well NP MF11D-3 O04 696 (was 14B-3)
<b>Project:</b>	North Piceance	<b>TVD Reference:</b>	WELL @ 6044.0ft (Original Well Elev)
<b>Reference Site:</b>	O04 696 (3rd)	<b>MD Reference:</b>	WELL @ 6044.0ft (Original Well Elev)
<b>Site Error:</b>	0.0ft	<b>North Reference:</b>	True
<b>Reference Well:</b>	NP MF11D-3 O04 696 (was 14B-3)	<b>Survey Calculation Method:</b>	Minimum Curvature
<b>Well Error:</b>	0.0ft	<b>Output errors are at</b>	2.00 sigma
<b>Reference Wellbore</b>	DD	<b>Database:</b>	EDM 5000.1 US Multi Users DB
<b>Reference Design:</b>	Plan #2	<b>Offset TVD Reference:</b>	Offset Datum

<b>Offset Design</b> O04 696 (3rd) - NP MF19E-3 O04 696 (was 19D-3) - DD - Plan #2													<b>Offset Site Error:</b> 0.0 ft
Survey Program: 0-MWD													<b>Offset Well Error:</b> 0.0 ft
Reference		Offset		Semi Major Axis		Distance							
Measured Depth (ft)	Vertical Depth (ft)	Measured Depth (ft)	Vertical Depth (ft)	Reference (ft)	Offset (ft)	Highside Toolface (°)	Offset Wellbore Centre +N/-S (ft)	+E/-W (ft)	Between Centres (ft)	Between Ellipses (ft)	Total Uncertainty Axis	Separation Factor	Warning
0.0	0.0	0.0	0.0	0.0	0.0	-141.79	-59.7	-47.0	76.0				
100.0	100.0	100.0	100.0	0.1	0.1	-141.79	-59.7	-47.0	76.0	75.7	0.27	279.044	
200.0	200.0	200.0	200.0	0.3	0.3	-141.79	-59.7	-47.0	76.0	75.4	0.62	122.278 CC, ES	
300.0	300.0	300.0	299.9	0.5	0.5	156.84	-61.3	-44.9	78.4	77.4	0.98	80.011	
400.0	399.6	399.5	399.1	0.7	0.7	153.58	-66.0	-38.7	85.8	84.4	1.38	62.109	
500.0	498.8	498.0	496.8	1.0	1.0	149.25	-73.7	-28.5	98.5	96.6	1.86	52.919 SF	

## Anticollision Report

<b>Company:</b>	EnCana Oil & Gas (USA) Inc	<b>Local Co-ordinate Reference:</b>	Well NP MF11D-3 O04 696 (was 14B-3)
<b>Project:</b>	North Piceance	<b>TVD Reference:</b>	WELL @ 6044.0ft (Original Well Elev)
<b>Reference Site:</b>	O04 696 (3rd)	<b>MD Reference:</b>	WELL @ 6044.0ft (Original Well Elev)
<b>Site Error:</b>	0.0ft	<b>North Reference:</b>	True
<b>Reference Well:</b>	NP MF11D-3 O04 696 (was 14B-3)	<b>Survey Calculation Method:</b>	Minimum Curvature
<b>Well Error:</b>	0.0ft	<b>Output errors are at</b>	2.00 sigma
<b>Reference Wellbore</b>	DD	<b>Database:</b>	EDM 5000.1 US Multi Users DB
<b>Reference Design:</b>	Plan #2	<b>Offset TVD Reference:</b>	Offset Datum

Offset Design													Offset Site Error:		0.0 ft
Survey Program: 0-MWD													Offset Well Error:		0.0 ft
Reference		Offset		Semi Major Axis			Distance							Warning	
Measured Depth	Vertical Depth	Measured Depth	Vertical Depth	Reference	Offset	Highside Toolface	Offset Wellbore Centre	Between Centres	Between Ellipses	Total Uncertainty Axis	Separation Factor				
Depth (ft)	Depth (ft)	Depth (ft)	Depth (ft)	(ft)	(ft)	(°)	+N/-S (ft)	+E/-W (ft)	(ft)	(ft)					
0.0	0.0	0.0	0.0	0.0	0.0	-141.83	-65.8	-51.7	83.7						
100.0	100.0	100.0	100.0	0.1	0.1	-141.83	-65.8	-51.7	83.7	83.4	0.27	307.241			
200.0	200.0	200.0	200.0	0.3	0.3	-141.83	-65.8	-51.7	83.7	83.0	0.62	134.634 CC, ES			
300.0	300.0	299.2	299.1	0.5	0.5	156.95	-67.7	-50.0	86.5	85.5	0.98	88.490			
400.0	399.6	397.7	397.4	0.7	0.7	154.12	-73.3	-44.8	95.3	93.9	1.37	69.360 SF			

# Anticollision Report

<b>Company:</b>	EnCana Oil & Gas (USA) Inc	<b>Local Co-ordinate Reference:</b>	Well NP MF11D-3 O04 696 (was 14B-3)
<b>Project:</b>	North Piceance	<b>TVD Reference:</b>	WELL @ 6044.0ft (Original Well Elev)
<b>Reference Site:</b>	O04 696 (3rd)	<b>MD Reference:</b>	WELL @ 6044.0ft (Original Well Elev)
<b>Site Error:</b>	0.0ft	<b>North Reference:</b>	True
<b>Reference Well:</b>	NP MF11D-3 O04 696 (was 14B-3)	<b>Survey Calculation Method:</b>	Minimum Curvature
<b>Well Error:</b>	0.0ft	<b>Output errors are at</b>	2.00 sigma
<b>Reference Wellbore</b>	DD	<b>Database:</b>	EDM 5000.1 US Multi Users DB
<b>Reference Design:</b>	Plan #2	<b>Offset TVD Reference:</b>	Offset Datum

Reference Depths are relative to WELL @ 6044.0ft (Original Well Elev)

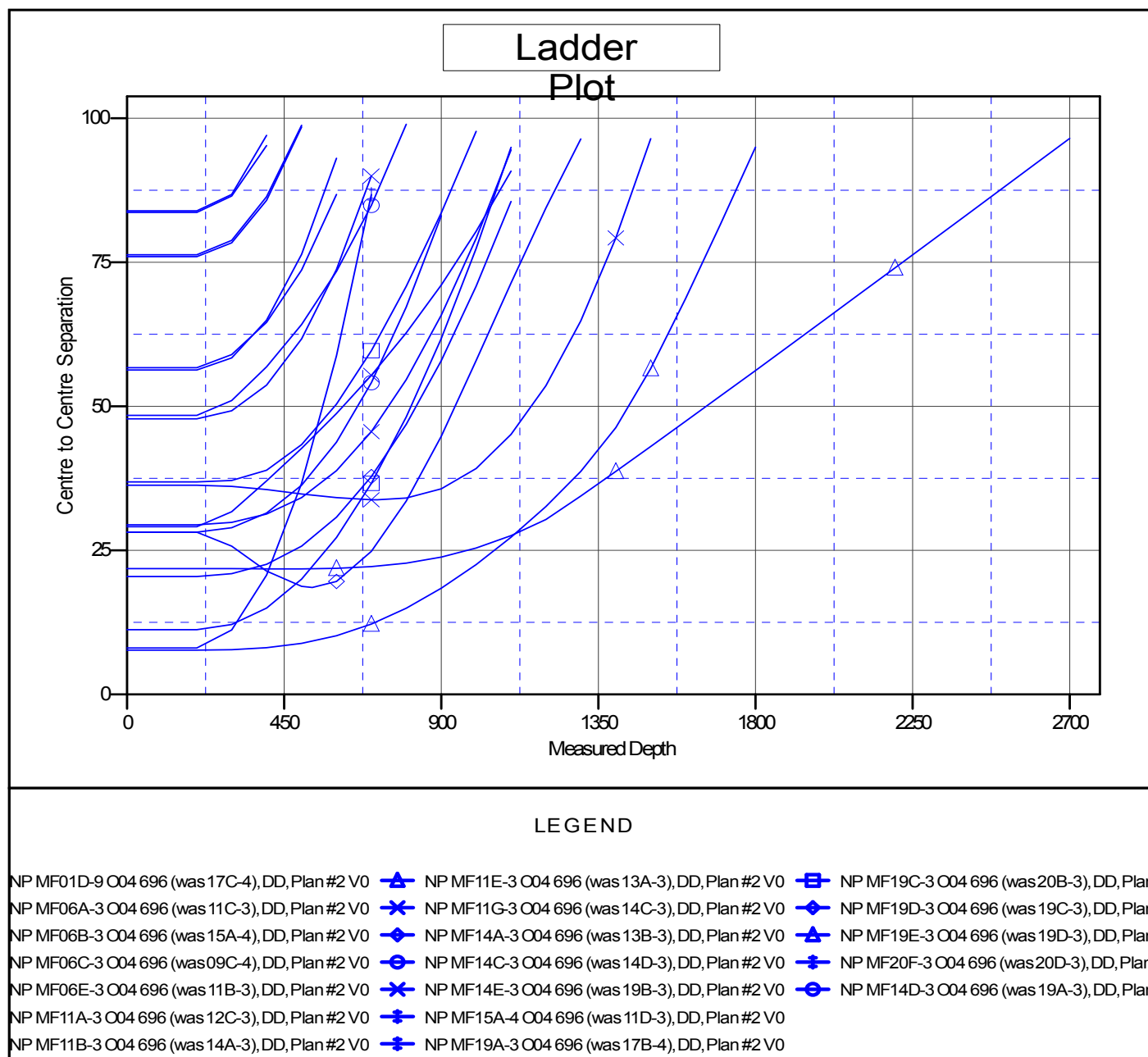
Offset Depths are relative to Offset Datum

Central Meridian is 105° 30' 0.00 W °

Coordinates are relative to: NP MF11D-3 O04 696 (was 14B-3)

Coordinate System is US State Plane 1983, Colorado Central Zone

Grid Convergence at Surface is: -1.64°



CC - Min centre to center distance or convergent point, SF - min separation factor, ES - min ellipse separation