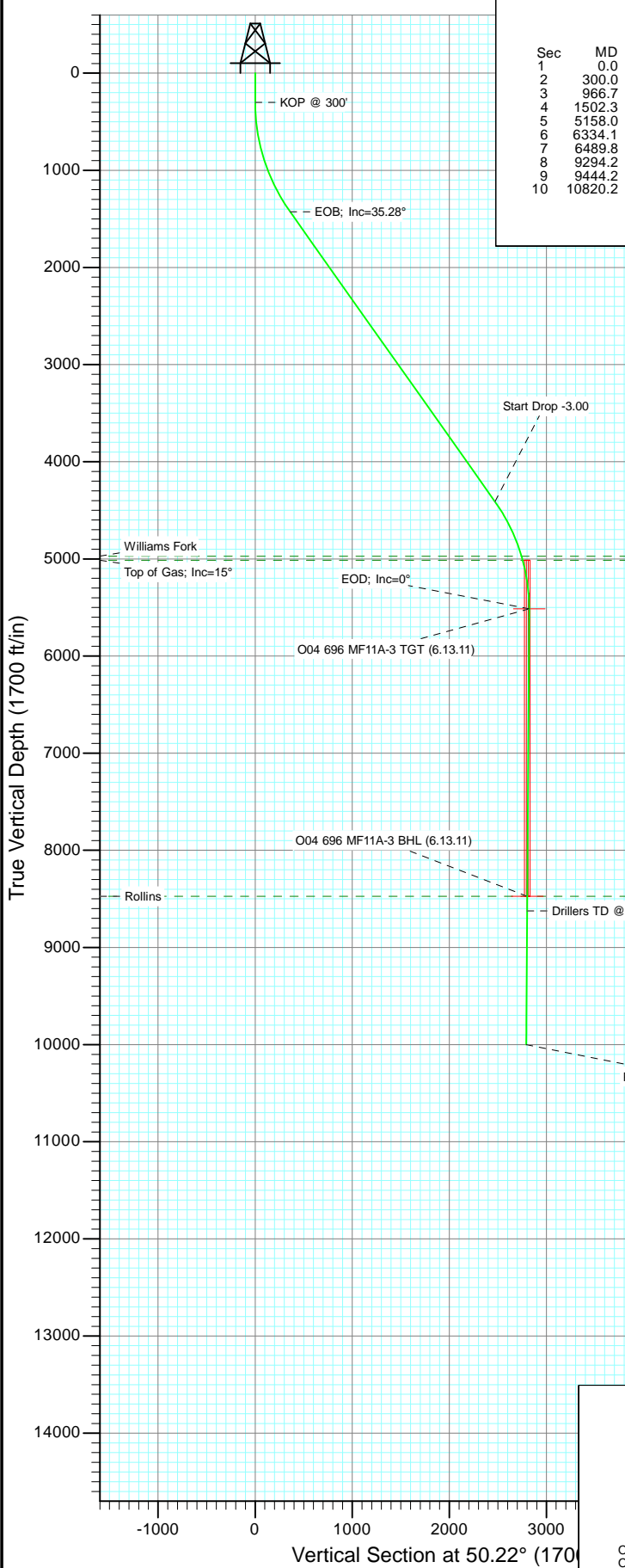
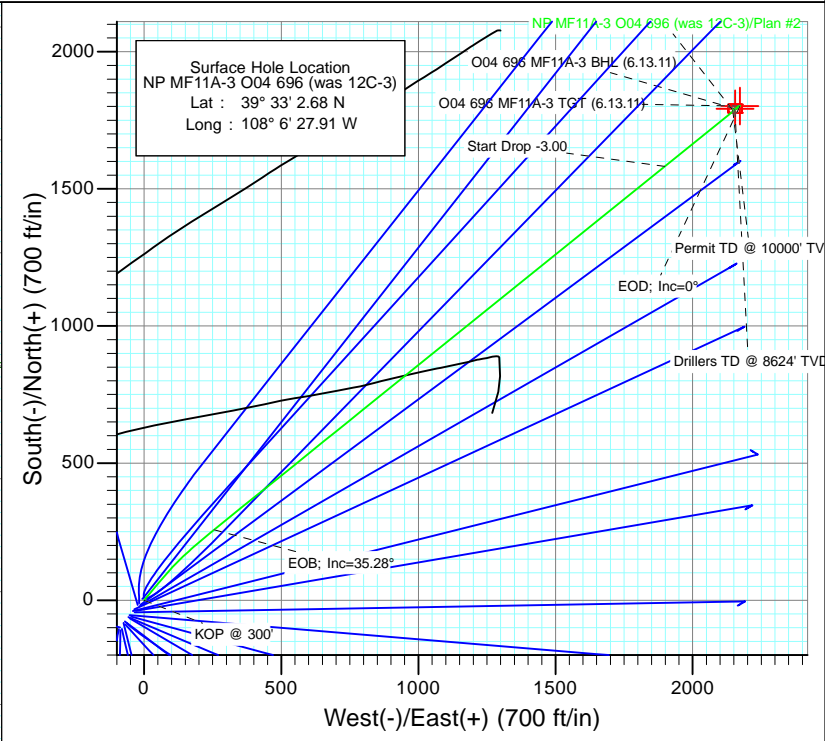




Project: North Piceance
 Site: O04 696 (3rd)
 Well: NP MF11A-3 O04 696 (was 12C-3)
 Wellbore: DD
 Design: Plan #2



SECTION DETAILS										
Sec	MD	Inc	Azi	TVD	+N/-S	+E/-W	Dleg	TFace	VSEct	Target
1	0.0	0.00	0.00	0.0	0.0	0.0	0.00	0.00	0.0	
2	300.0	0.00	0.00	300.0	0.0	0.0	0.00	0.00	0.0	
3	966.7	20.00	40.00	953.2	88.2	74.0	3.00	40.00	113.4	
4	1502.3	35.28	51.13	1426.6	256.6	254.5	3.00	23.74	359.8	
5	5158.0	35.28	51.13	4410.9	1581.8	1898.4	0.00	0.00	2471.1	
6	6334.1	0.00	0.00	5514.0	1802.0	2171.5	3.00	180.00	2821.8	O04 696 MF11A-3 TGT (6.13.11)
7	6489.8	0.39	239.30	5669.8	1801.7	2171.0	0.25	239.30	2821.3	
8	9294.2	0.39	239.30	8474.0	1792.0	2154.7	0.00	0.00	2802.5	O04 696 MF11A-3 BHL (6.13.11)
9	9444.2	0.39	239.30	8624.0	1791.5	2153.8	0.00	0.00	2801.5	
10	10820.2	0.39	239.30	10000.0	1786.7	2145.7	0.00	0.00	2792.2	



Azimuths to True North
 Magnetic North: 10.54°

Magnetic Field
 Strength: 52365.2snT
 Dip Angle: 65.79°
 Date: 6/17/2010
 Model: IGRF2010

FORMATION TOP DETAILS		
TVDPath	MDPath	Formation
4974.0	5786.6	Williams Fork
5014.0	5828.2	Top of Gas; Inc=15°
8474.0	9294.2	Rollins

Plan #2 NP MF11A-3 O04 696 (was 12C-3) 95xxx; LR WELL @ 6044.0ft (Original Well Elev) North American Datum 1983 Well NP MF11A-3 O04 696 (was 12C-3), True North							
Type TD	Target No Target (Freehand)	Azimuth 50.22	Origin Type Slot	N/S 0.0	E/W 0.0	From TVD 0.0	
Name	TVD	+N/-S	+E/-W	Latitude	Longitude		
O04 696 MF11A-3 TGT (6.13.11)	5514.0	1802.0	2171.5	39° 33' 20.49 N	108° 6' 0.18 W		
O04 696 MF11A-3 BHL (6.13.11)	8474.0	1792.0	2154.7	39° 33' 20.39 N	108° 6' 0.40 W		

Planning Report

Database:	USA EDM 5000 US Multi Users DB	Local Co-ordinate Reference:	Well NP MF11A-3 O04 696 (was 12C-3)
Company:	EnCana Oil & Gas (USA) Inc	TVD Reference:	WELL @ 6044.0ft (Original Well Elev)
Project:	North Piceance	MD Reference:	WELL @ 6044.0ft (Original Well Elev)
Site:	O04 696 (3rd)	North Reference:	True
Well:	NP MF11A-3 O04 696 (was 12C-3)	Survey Calculation Method:	Minimum Curvature
Wellbore:	DD		
Design:	Plan #2		

Project	North Piceance		
Map System:	US State Plane 1983	System Datum:	Mean Sea Level
Geo Datum:	North American Datum 1983		
Map Zone:	Colorado Central Zone		

Site	O04 696 (3rd)				
Site Position:		Northing:	1,635,941.08 ft	Latitude:	39° 33' 1.64 N
From:	Lat/Long	Easting:	2,264,673.43 ft	Longitude:	108° 6' 29.09 W
Position Uncertainty:	0.0 ft	Slot Radius:	13.200 in	Grid Convergence:	-1.64 °

Well	NP MF11A-3 O04 696 (was 12C-3)					
Well Position	+N/-S	0.0 ft	Northing:	1,636,043.59 ft	Latitude:	39° 33' 2.68 N
	+E/-W	0.0 ft	Easting:	2,264,768.83 ft	Longitude:	108° 6' 27.91 W
Position Uncertainty		0.0 ft	Wellhead Elevation:	ft	Ground Level:	6,022.0 ft

Wellbore	DD				
Magnetics	Model Name	Sample Date	Declination	Dip Angle	Field Strength
	IGRF2010	6/17/2010	(°)	(°)	(nT)
			10.54	65.79	52,365

Design	Plan #2			
Audit Notes:				
Version:	Phase:	PLAN	Tie On Depth:	0.0
Vertical Section:	Depth From (TVD)	+N/-S	+E/-W	Direction
	(ft)	(ft)	(ft)	(°)
	0.0	0.0	0.0	50.22

Plan Sections										
Measured Depth (ft)	Inclination (°)	Azimuth (°)	Vertical Depth (ft)	+N/-S (ft)	+E/-W (ft)	Dogleg Rate (°/100ft)	Build Rate (°/100ft)	Turn Rate (°/100ft)	TFO (°)	Target
0.0	0.00	0.00	0.0	0.0	0.0	0.00	0.00	0.00	0.00	
300.0	0.00	0.00	300.0	0.0	0.0	0.00	0.00	0.00	0.00	
966.7	20.00	40.00	953.2	88.2	74.0	3.00	3.00	0.00	40.00	
1,502.3	35.28	51.13	1,426.6	256.6	254.5	3.00	2.85	2.08	23.74	
5,158.0	35.28	51.13	4,410.9	1,581.8	1,898.4	0.00	0.00	0.00	0.00	
6,334.1	0.00	0.00	5,514.0	1,802.0	2,171.5	3.00	-3.00	0.00	180.00	O04 696 MF11A-3 TC
6,489.8	0.39	239.30	5,669.8	1,801.7	2,171.0	0.25	0.25	-77.50	239.30	
9,294.2	0.39	239.30	8,474.0	1,792.0	2,154.7	0.00	0.00	0.00	0.00	O04 696 MF11A-3 B-
9,444.2	0.39	239.30	8,624.0	1,791.5	2,153.8	0.00	0.00	0.00	0.00	
10,820.2	0.39	239.30	10,000.0	1,786.7	2,145.7	0.00	0.00	0.00	0.00	

Planning Report

Database:	USA EDM 5000 US Multi Users DB	Local Co-ordinate Reference:	Well NP MF11A-3 O04 696 (was 12C-3)
Company:	EnCana Oil & Gas (USA) Inc	TVD Reference:	WELL @ 6044.0ft (Original Well Elev)
Project:	North Piceance	MD Reference:	WELL @ 6044.0ft (Original Well Elev)
Site:	O04 696 (3rd)	North Reference:	True
Well:	NP MF11A-3 O04 696 (was 12C-3)	Survey Calculation Method:	Minimum Curvature
Wellbore:	DD		
Design:	Plan #2		

Planned Survey									
Measured Depth (ft)	Inclination (°)	Azimuth (°)	Vertical Depth (ft)	+N/-S (ft)	+E/-W (ft)	Vertical Section (ft)	Dogleg Rate (°/100ft)	Build Rate (°/100ft)	Comments / Formations
0.0	0.00	0.00	0.0	0.0	0.0	0.0	0.00	0.00	
30.0	0.00	0.00	30.0	0.0	0.0	0.0	0.00	0.00	
60.0	0.00	0.00	60.0	0.0	0.0	0.0	0.00	0.00	
90.0	0.00	0.00	90.0	0.0	0.0	0.0	0.00	0.00	
120.0	0.00	0.00	120.0	0.0	0.0	0.0	0.00	0.00	
150.0	0.00	0.00	150.0	0.0	0.0	0.0	0.00	0.00	
180.0	0.00	0.00	180.0	0.0	0.0	0.0	0.00	0.00	
210.0	0.00	0.00	210.0	0.0	0.0	0.0	0.00	0.00	
240.0	0.00	0.00	240.0	0.0	0.0	0.0	0.00	0.00	
270.0	0.00	0.00	270.0	0.0	0.0	0.0	0.00	0.00	
300.0	0.00	0.00	300.0	0.0	0.0	0.0	0.00	0.00	KOP @ 300'
330.0	0.90	40.00	330.0	0.2	0.2	0.2	3.00	3.00	
360.0	1.80	40.00	360.0	0.7	0.6	0.9	3.00	3.00	
390.0	2.70	40.00	390.0	1.6	1.4	2.1	3.00	3.00	
420.0	3.60	40.00	419.9	2.9	2.4	3.7	3.00	3.00	
450.0	4.50	40.00	449.8	4.5	3.8	5.8	3.00	3.00	
480.0	5.40	40.00	479.7	6.5	5.4	8.3	3.00	3.00	
510.0	6.30	40.00	509.6	8.8	7.4	11.4	3.00	3.00	
540.0	7.20	40.00	539.4	11.5	9.7	14.8	3.00	3.00	
570.0	8.10	40.00	569.1	14.6	12.2	18.8	3.00	3.00	
600.0	9.00	40.00	598.8	18.0	15.1	23.1	3.00	3.00	
630.0	9.90	40.00	628.4	21.8	18.3	28.0	3.00	3.00	
660.0	10.80	40.00	657.9	25.9	21.7	33.3	3.00	3.00	
690.0	11.70	40.00	687.3	30.4	25.5	39.1	3.00	3.00	
720.0	12.60	40.00	716.6	35.2	29.6	45.3	3.00	3.00	
750.0	13.50	40.00	745.8	40.4	33.9	51.9	3.00	3.00	
780.0	14.40	40.00	775.0	46.0	38.6	59.1	3.00	3.00	
810.0	15.30	40.00	804.0	51.9	43.5	66.6	3.00	3.00	
840.0	16.20	40.00	832.8	58.1	48.7	74.6	3.00	3.00	
870.0	17.10	40.00	861.6	64.7	54.3	83.1	3.00	3.00	
900.0	18.00	40.00	890.2	71.6	60.1	92.0	3.00	3.00	
930.0	18.90	40.00	918.6	78.9	66.2	101.3	3.00	3.00	
960.0	19.80	40.00	946.9	86.5	72.6	111.1	3.00	3.00	
966.7	20.00	40.00	953.2	88.2	74.0	113.4	3.00	3.00	
990.0	20.64	40.80	975.1	94.4	79.3	121.3	3.00	2.75	
1,020.0	21.47	41.76	1,003.1	102.5	86.4	132.0	3.00	2.77	
1,050.0	22.31	42.65	1,030.9	110.8	93.9	143.1	3.00	2.79	
1,080.0	23.15	43.48	1,058.6	119.3	101.8	154.6	3.00	2.80	
1,110.0	24.00	44.26	1,086.1	127.9	110.1	166.5	3.00	2.82	
1,140.0	24.84	44.98	1,113.4	136.7	118.9	178.8	3.00	2.83	
1,170.0	25.70	45.66	1,140.5	145.7	128.0	191.6	3.00	2.84	
1,200.0	26.55	46.30	1,167.5	154.9	137.5	204.8	3.00	2.85	
1,230.0	27.41	46.90	1,194.2	164.3	147.4	218.3	3.00	2.86	
1,260.0	28.27	47.47	1,220.7	173.8	157.6	232.3	3.00	2.87	
1,290.0	29.13	48.01	1,247.0	183.5	168.3	246.7	3.00	2.87	
1,320.0	30.00	48.52	1,273.1	193.3	179.3	261.5	3.00	2.88	
1,350.0	30.86	49.00	1,299.0	203.3	190.8	276.7	3.00	2.89	
1,380.0	31.73	49.46	1,324.6	213.5	202.6	292.3	3.00	2.89	
1,410.0	32.60	49.90	1,350.0	223.8	214.7	308.3	3.00	2.90	
1,440.0	33.47	50.32	1,375.2	234.3	227.3	324.6	3.00	2.90	
1,470.0	34.34	50.72	1,400.1	245.0	240.2	341.3	3.00	2.91	
1,500.0	35.21	51.10	1,424.7	255.8	253.5	358.5	3.00	2.91	

Planning Report

Database:	USA EDM 5000 US Multi Users DB	Local Co-ordinate Reference:	Well NP MF11A-3 O04 696 (was 12C-3)
Company:	EnCana Oil & Gas (USA) Inc	TVD Reference:	WELL @ 6044.0ft (Original Well Elev)
Project:	North Piceance	MD Reference:	WELL @ 6044.0ft (Original Well Elev)
Site:	O04 696 (3rd)	North Reference:	True
Well:	NP MF11A-3 O04 696 (was 12C-3)	Survey Calculation Method:	Minimum Curvature
Wellbore:	DD		
Design:	Plan #2		

Planned Survey									
Measured Depth (ft)	Inclination (°)	Azimuth (°)	Vertical Depth (ft)	+N/-S (ft)	+E/-W (ft)	Vertical Section (ft)	Dogleg Rate (°/100ft)	Build Rate (°/100ft)	Comments / Formations
1,502.3	35.28	51.13	1,426.6	256.6	254.5	359.8	2.99	2.90	EOB; Inc=35.28°
1,530.0	35.28	51.13	1,449.2	266.6	267.0	375.8	0.00	0.00	
1,560.0	35.28	51.13	1,473.7	277.5	280.5	393.1	0.00	0.00	
1,590.0	35.28	51.13	1,498.2	288.4	294.0	410.4	0.00	0.00	
1,620.0	35.28	51.13	1,522.7	299.3	307.5	427.8	0.00	0.00	
1,650.0	35.28	51.13	1,547.2	310.1	320.9	445.1	0.00	0.00	
1,680.0	35.28	51.13	1,571.7	321.0	334.4	462.4	0.00	0.00	
1,710.0	35.28	51.13	1,596.2	331.9	347.9	479.7	0.00	0.00	
1,740.0	35.28	51.13	1,620.6	342.8	361.4	497.1	0.00	0.00	
1,770.0	35.28	51.13	1,645.1	353.6	374.9	514.4	0.00	0.00	
1,800.0	35.28	51.13	1,669.6	364.5	388.4	531.7	0.00	0.00	
1,830.0	35.28	51.13	1,694.1	375.4	401.9	549.0	0.00	0.00	
1,860.0	35.28	51.13	1,718.6	386.3	415.4	566.4	0.00	0.00	
1,890.0	35.28	51.13	1,743.1	397.1	428.9	583.7	0.00	0.00	
1,920.0	35.28	51.13	1,767.6	408.0	442.4	601.0	0.00	0.00	
1,950.0	35.28	51.13	1,792.1	418.9	455.8	618.3	0.00	0.00	
1,980.0	35.28	51.13	1,816.6	429.8	469.3	635.7	0.00	0.00	
2,010.0	35.28	51.13	1,841.1	440.6	482.8	653.0	0.00	0.00	
2,040.0	35.28	51.13	1,865.5	451.5	496.3	670.3	0.00	0.00	
2,070.0	35.28	51.13	1,890.0	462.4	509.8	687.6	0.00	0.00	
2,100.0	35.28	51.13	1,914.5	473.3	523.3	705.0	0.00	0.00	
2,130.0	35.28	51.13	1,939.0	484.1	536.8	722.3	0.00	0.00	
2,160.0	35.28	51.13	1,963.5	495.0	550.3	739.6	0.00	0.00	
2,190.0	35.28	51.13	1,988.0	505.9	563.8	756.9	0.00	0.00	
2,220.0	35.28	51.13	2,012.5	516.8	577.3	774.3	0.00	0.00	
2,250.0	35.28	51.13	2,037.0	527.6	590.7	791.6	0.00	0.00	
2,280.0	35.28	51.13	2,061.5	538.5	604.2	808.9	0.00	0.00	
2,310.0	35.28	51.13	2,086.0	549.4	617.7	826.3	0.00	0.00	
2,340.0	35.28	51.13	2,110.4	560.3	631.2	843.6	0.00	0.00	
2,370.0	35.28	51.13	2,134.9	571.1	644.7	860.9	0.00	0.00	
2,400.0	35.28	51.13	2,159.4	582.0	658.2	878.2	0.00	0.00	
2,430.0	35.28	51.13	2,183.9	592.9	671.7	895.6	0.00	0.00	
2,460.0	35.28	51.13	2,208.4	603.8	685.2	912.9	0.00	0.00	
2,490.0	35.28	51.13	2,232.9	614.6	698.7	930.2	0.00	0.00	

Targets									
Target Name	Dip Angle (°)	Dip Dir. (°)	TVD (ft)	+N/-S (ft)	+E/-W (ft)	Northing (ft)	Easting (ft)	Latitude	Longitude
O04 696 MF11A-3 TGT - hit/miss target - Shape	0.00	0.00	5,514.0	1,802.0	2,171.5	1,637,782.53	2,266,991.16	39° 33' 20.49 N	108° 6' 0.18 W
- plan misses target center by 3787.4ft at 2490.0ft MD (2232.9 TVD, 614.6 N, 698.7 E)									
- Point									
O04 696 MF11A-3 BHL - hit/miss target - Shape	0.00	0.00	8,474.0	1,792.0	2,154.7	1,637,773.01	2,266,974.04	39° 33' 20.39 N	108° 6' 0.40 W
- plan misses target center by 6515.9ft at 2490.0ft MD (2232.9 TVD, 614.6 N, 698.7 E)									
- Rectangle (sides W30.0 H50.0 D0.0)									

Planning Report

Database: USA EDM 5000 US Multi Users DB
Company: EnCana Oil & Gas (USA) Inc
Project: North Piceance
Site: O04 696 (3rd)
Well: NP MF11A-3 O04 696 (was 12C-3)
Wellbore: DD
Design: Plan #2

Local Co-ordinate Reference: Well NP MF11A-3 O04 696 (was 12C-3)
TVD Reference: WELL @ 6044.0ft (Original Well Elev)
MD Reference: WELL @ 6044.0ft (Original Well Elev)
North Reference: True
Survey Calculation Method: Minimum Curvature

Planned Survey

Measured Depth (ft)	Inclination (°)	Azimuth (°)	Vertical Depth (ft)	+N/-S (ft)	+E/-W (ft)	Vertical Section (ft)	Dogleg Rate (°/100ft)	Build Rate (°/100ft)	Comments / Formations
2,500.0	35.28	51.13	2,241.1	618.3	703.2	936.0	0.00	0.00	
2,600.0	35.28	51.13	2,322.7	654.5	748.1	993.7	0.00	0.00	
2,700.0	35.28	51.13	2,404.3	690.8	793.1	1,051.5	0.00	0.00	
2,800.0	35.28	51.13	2,486.0	727.0	838.1	1,109.2	0.00	0.00	
2,900.0	35.28	51.13	2,567.6	763.3	883.0	1,167.0	0.00	0.00	
3,000.0	35.28	51.13	2,649.2	799.5	928.0	1,224.7	0.00	0.00	
3,100.0	35.28	51.13	2,730.8	835.8	973.0	1,282.5	0.00	0.00	
3,200.0	35.28	51.13	2,812.5	872.0	1,017.9	1,340.2	0.00	0.00	
3,300.0	35.28	51.13	2,894.1	908.3	1,062.9	1,398.0	0.00	0.00	
3,400.0	35.28	51.13	2,975.7	944.5	1,107.9	1,455.7	0.00	0.00	
3,500.0	35.28	51.13	3,057.4	980.8	1,152.8	1,513.5	0.00	0.00	
3,600.0	35.28	51.13	3,139.0	1,017.0	1,197.8	1,571.3	0.00	0.00	
3,700.0	35.28	51.13	3,220.6	1,053.3	1,242.8	1,629.0	0.00	0.00	
3,800.0	35.28	51.13	3,302.3	1,089.5	1,287.7	1,686.8	0.00	0.00	
3,900.0	35.28	51.13	3,383.9	1,125.8	1,332.7	1,744.5	0.00	0.00	
4,000.0	35.28	51.13	3,465.5	1,162.0	1,377.7	1,802.3	0.00	0.00	
4,100.0	35.28	51.13	3,547.2	1,198.3	1,422.6	1,860.0	0.00	0.00	
4,200.0	35.28	51.13	3,628.8	1,234.5	1,467.6	1,917.8	0.00	0.00	
4,300.0	35.28	51.13	3,710.4	1,270.8	1,512.6	1,975.5	0.00	0.00	
4,400.0	35.28	51.13	3,792.1	1,307.0	1,557.5	2,033.3	0.00	0.00	
4,500.0	35.28	51.13	3,873.7	1,343.3	1,602.5	2,091.0	0.00	0.00	
4,600.0	35.28	51.13	3,955.3	1,379.5	1,647.5	2,148.8	0.00	0.00	
4,700.0	35.28	51.13	4,037.0	1,415.8	1,692.4	2,206.5	0.00	0.00	
4,800.0	35.28	51.13	4,118.6	1,452.0	1,737.4	2,264.3	0.00	0.00	
4,900.0	35.28	51.13	4,200.2	1,488.3	1,782.4	2,322.0	0.00	0.00	
5,000.0	35.28	51.13	4,281.9	1,524.5	1,827.3	2,379.8	0.00	0.00	
5,100.0	35.28	51.13	4,363.5	1,560.8	1,872.3	2,437.5	0.00	0.00	
5,158.0	35.28	51.13	4,410.8	1,581.8	1,898.4	2,471.0	0.00	0.00	Start Drop -3.00
5,200.0	34.02	51.13	4,445.4	1,596.8	1,917.0	2,494.9	3.00	-3.00	
5,300.0	31.02	51.13	4,529.7	1,630.5	1,958.8	2,548.7	3.00	-3.00	
5,400.0	28.02	51.13	4,616.7	1,661.5	1,997.2	2,597.9	3.00	-3.00	
5,500.0	25.02	51.13	4,706.2	1,689.5	2,031.9	2,642.6	3.00	-3.00	
5,600.0	22.02	51.13	4,797.9	1,714.5	2,063.0	2,682.5	3.00	-3.00	
5,700.0	19.02	51.13	4,891.5	1,736.5	2,090.3	2,717.5	3.00	-3.00	
5,786.6	16.42	51.13	4,974.0	1,753.1	2,110.8	2,743.9	3.00	-3.00	Williams Fork
5,800.0	16.02	51.13	4,986.8	1,755.4	2,113.7	2,747.6	3.00	-3.00	
5,828.2	15.18	51.13	5,014.0	1,760.2	2,119.6	2,755.2	3.00	-3.00	Top of Gas; Inc=15°
5,900.0	13.02	51.13	5,083.6	1,771.2	2,133.3	2,772.7	3.00	-3.00	
6,000.0	10.02	51.13	5,181.6	1,783.7	2,148.8	2,792.7	3.00	-3.00	
6,100.0	7.02	51.13	5,280.5	1,793.0	2,160.3	2,807.5	3.00	-3.00	
6,200.0	4.02	51.13	5,380.0	1,799.0	2,167.8	2,817.1	3.00	-3.00	
6,300.0	1.02	51.13	5,479.9	1,801.8	2,171.3	2,821.5	3.00	-3.00	
6,334.1	0.00	51.13	5,514.0	1,802.0	2,171.5	2,821.8	3.00	-3.00	EOD; Inc=0° - O04 696 MF11A-3 TGT (6.13.11)
6,400.0	0.16	239.30	5,579.9	1,802.0	2,171.4	2,821.7	0.25	0.25	
6,489.8	0.39	239.30	5,669.8	1,801.7	2,171.0	2,821.3	0.25	0.25	
6,500.0	0.39	239.30	5,679.9	1,801.7	2,171.0	2,821.2	0.00	0.00	
6,600.0	0.39	239.30	5,779.9	1,801.3	2,170.4	2,820.5	0.00	0.00	
6,700.0	0.39	239.30	5,879.9	1,801.0	2,169.8	2,819.9	0.00	0.00	
6,800.0	0.39	239.30	5,979.9	1,800.7	2,169.2	2,819.2	0.00	0.00	
6,900.0	0.39	239.30	6,079.9	1,800.3	2,168.6	2,818.5	0.00	0.00	
7,000.0	0.39	239.30	6,179.9	1,800.0	2,168.1	2,817.9	0.00	0.00	
7,100.0	0.39	239.30	6,279.9	1,799.6	2,167.5	2,817.2	0.00	0.00	

Planning Report

Database:	USA EDM 5000 US Multi Users DB	Local Co-ordinate Reference:	Well NP MF11A-3 O04 696 (was 12C-3)
Company:	EnCana Oil & Gas (USA) Inc	TVD Reference:	WELL @ 6044.0ft (Original Well Elev)
Project:	North Piceance	MD Reference:	WELL @ 6044.0ft (Original Well Elev)
Site:	O04 696 (3rd)	North Reference:	True
Well:	NP MF11A-3 O04 696 (was 12C-3)	Survey Calculation Method:	Minimum Curvature
Wellbore:	DD		
Design:	Plan #2		

Planned Survey									
Measured Depth (ft)	Inclination (°)	Azimuth (°)	Vertical Depth (ft)	+N/-S (ft)	+E/-W (ft)	Vertical Section (ft)	Dogleg Rate (°/100ft)	Build Rate (°/100ft)	Comments / Formations
7,200.0	0.39	239.30	6,379.9	1,799.3	2,166.9	2,816.5	0.00	0.00	
7,300.0	0.39	239.30	6,479.9	1,798.9	2,166.3	2,815.8	0.00	0.00	
7,400.0	0.39	239.30	6,579.9	1,798.6	2,165.7	2,815.2	0.00	0.00	
7,500.0	0.39	239.30	6,679.9	1,798.2	2,165.1	2,814.5	0.00	0.00	
7,600.0	0.39	239.30	6,779.9	1,797.9	2,164.6	2,813.8	0.00	0.00	
7,700.0	0.39	239.30	6,879.9	1,797.5	2,164.0	2,813.2	0.00	0.00	
7,800.0	0.39	239.30	6,979.9	1,797.2	2,163.4	2,812.5	0.00	0.00	
7,900.0	0.39	239.30	7,079.9	1,796.8	2,162.8	2,811.8	0.00	0.00	
8,000.0	0.39	239.30	7,179.9	1,796.5	2,162.2	2,811.2	0.00	0.00	
8,100.0	0.39	239.30	7,279.9	1,796.1	2,161.6	2,810.5	0.00	0.00	
8,200.0	0.39	239.30	7,379.9	1,795.8	2,161.1	2,809.8	0.00	0.00	
8,300.0	0.39	239.30	7,479.9	1,795.4	2,160.5	2,809.1	0.00	0.00	
8,400.0	0.39	239.30	7,579.9	1,795.1	2,159.9	2,808.5	0.00	0.00	
8,500.0	0.39	239.30	7,679.9	1,794.8	2,159.3	2,807.8	0.00	0.00	
8,600.0	0.39	239.30	7,779.9	1,794.4	2,158.7	2,807.1	0.00	0.00	
8,700.0	0.39	239.30	7,879.9	1,794.1	2,158.1	2,806.5	0.00	0.00	
8,800.0	0.39	239.30	7,979.9	1,793.7	2,157.5	2,805.8	0.00	0.00	
8,900.0	0.39	239.30	8,079.9	1,793.4	2,157.0	2,805.1	0.00	0.00	
9,000.0	0.39	239.30	8,179.8	1,793.0	2,156.4	2,804.4	0.00	0.00	
9,100.0	0.39	239.30	8,279.8	1,792.7	2,155.8	2,803.8	0.00	0.00	
9,200.0	0.39	239.30	8,379.8	1,792.3	2,155.2	2,803.1	0.00	0.00	
9,294.2	0.39	239.30	8,474.0	1,792.0	2,154.7	2,802.5	0.00	0.00	Rollins - O04 696 MF11A-3 BHL (6.13.11)
9,300.0	0.39	239.30	8,479.8	1,792.0	2,154.6	2,802.4	0.00	0.00	
9,400.0	0.39	239.30	8,579.8	1,791.6	2,154.0	2,801.8	0.00	0.00	
9,444.2	0.39	239.30	8,624.0	1,791.5	2,153.8	2,801.5	0.00	0.00	Drillers TD @ 8624' TVD
9,500.0	0.39	239.30	8,679.8	1,791.3	2,153.5	2,801.1	0.00	0.00	
9,600.0	0.39	239.30	8,779.8	1,790.9	2,152.9	2,800.4	0.00	0.00	
9,700.0	0.39	239.30	8,879.8	1,790.6	2,152.3	2,799.7	0.00	0.00	
9,800.0	0.39	239.30	8,979.8	1,790.2	2,151.7	2,799.1	0.00	0.00	
9,900.0	0.39	239.30	9,079.8	1,789.9	2,151.1	2,798.4	0.00	0.00	
10,000.0	0.39	239.30	9,179.8	1,789.6	2,150.5	2,797.7	0.00	0.00	
10,100.0	0.39	239.30	9,279.8	1,789.2	2,149.9	2,797.1	0.00	0.00	
10,200.0	0.39	239.30	9,379.8	1,788.9	2,149.4	2,796.4	0.00	0.00	
10,300.0	0.39	239.30	9,479.8	1,788.5	2,148.8	2,795.7	0.00	0.00	
10,400.0	0.39	239.30	9,579.8	1,788.2	2,148.2	2,795.0	0.00	0.00	
10,500.0	0.39	239.30	9,679.8	1,787.8	2,147.6	2,794.4	0.00	0.00	
10,600.0	0.39	239.30	9,779.8	1,787.5	2,147.0	2,793.7	0.00	0.00	
10,700.0	0.39	239.30	9,879.8	1,787.1	2,146.4	2,793.0	0.00	0.00	
10,800.0	0.39	239.30	9,979.8	1,786.8	2,145.9	2,792.4	0.00	0.00	
10,820.2	0.39	239.30	10,000.0	1,786.7	2,145.7	2,792.2	0.00	0.00	Permit TD @ 10000' TVD

Planning Report

Database: USA EDM 5000 US Multi Users DB	Local Co-ordinate Reference: Well NP MF11A-3 O04 696 (was 12C-3)
Company: EnCana Oil & Gas (USA) Inc	TVD Reference: WELL @ 6044.0ft (Original Well Elev)
Project: North Piceance	MD Reference: WELL @ 6044.0ft (Original Well Elev)
Site: O04 696 (3rd)	North Reference: True
Well: NP MF11A-3 O04 696 (was 12C-3)	Survey Calculation Method: Minimum Curvature
Wellbore: DD	
Design: Plan #2	

Targets									
Target Name	Dip Angle	Dip Dir.	TVD	+N/-S	+E/-W	Northing	Easting	Latitude	Longitude
- hit/miss target	(°)	(°)	(ft)	(ft)	(ft)	(ft)	(ft)		
- Shape									
O04 696 MF11A-3 TGT - plan hits target center - Point	0.00	0.00	5,514.0	1,802.0	2,171.5	1,637,782.53	2,266,991.16	39° 33' 20.49 N	108° 6' 0.18 W
O04 696 MF11A-3 BHL - plan hits target center - Rectangle (sides W30.0 H50.0 D0.0)	0.00	0.00	8,474.0	1,792.0	2,154.7	1,637,773.01	2,266,974.04	39° 33' 20.39 N	108° 6' 0.40 W

Formations					
Measured Depth	Vertical Depth	Name	Lithology	Dip	Dip Direction
(ft)	(ft)			(°)	(°)
5,786.6	4,974.0	Williams Fork		0.00	
5,828.2	5,014.0	Top of Gas; Inc=15°		0.00	
9,294.2	8,474.0	Rollins		0.00	

Plan Annotations					
Measured Depth	Vertical Depth	Local Coordinates		Comment	
(ft)	(ft)	+N/-S	+E/-W		
		(ft)	(ft)		
300.0	300.0	0.0	0.0	KOP @ 300'	
1,502.3	1,426.6	88.2	74.0	EOB; Inc=35.28°	
5,158.0	4,410.9	256.6	254.5	Start Drop -3.00	
6,334.1	5,514.0	1,581.8	1,898.4	EOD; Inc=0°	
9,444.2	8,624.0	1,802.0	2,171.5	Drillers TD @ 8624' TVD	
10,820.2	10,000.0	1,801.7	2,171.0	Permit TD @ 10000' TVD	

EnCana Oil & Gas (USA) Inc

North Piceance

O04 696 (3rd)

NP MF11A-3 O04 696 (was 12C-3)

DD

Plan #2

Anticollision Report

14 June, 2011

Anticollision Report

Company:	EnCana Oil & Gas (USA) Inc	Local Co-ordinate Reference:	Well NP MF11A-3 O04 696 (was 12C-3)
Project:	North Piceance	TVD Reference:	WELL @ 6044.0ft (Original Well Elev)
Reference Site:	O04 696 (3rd)	MD Reference:	WELL @ 6044.0ft (Original Well Elev)
Site Error:	0.0ft	North Reference:	True
Reference Well:	NP MF11A-3 O04 696 (was 12C-3)	Survey Calculation Method:	Minimum Curvature
Well Error:	0.0ft	Output errors are at	2.00 sigma
Reference Wellbore	DD	Database:	EDM 5000.1 US Multi Users DB
Reference Design:	Plan #2	Offset TVD Reference:	Offset Datum

Reference	Plan #2		
Filter type:	NO GLOBAL FILTER: Using user defined selection & filtering criteria		
Interpolation Method:	MD Interval 100.0ft	Error Model:	Systematic Ellipse
Depth Range:	Unlimited	Scan Method:	Closest Approach 3D
Results Limited by:	Maximum center-center distance of 100.0ft	Error Surface:	Elliptical Conic
Warning Levels Evaluated at:	2.00 Sigma		

Survey Tool Program		Date	6/14/2011		
From (ft)	To (ft)	Survey (Wellbore)	Tool Name	Description	
0.0	10,820.2	Plan #2 (DD)	MWD	Geolink MWD	

Anticollision Report

Company:	EnCana Oil & Gas (USA) Inc	Local Co-ordinate Reference:	Well NP MF11A-3 O04 696 (was 12C-3)
Project:	North Piceance	TVD Reference:	WELL @ 6044.0ft (Original Well Elev)
Reference Site:	O04 696 (3rd)	MD Reference:	WELL @ 6044.0ft (Original Well Elev)
Site Error:	0.0ft	North Reference:	True
Reference Well:	NP MF11A-3 O04 696 (was 12C-3)	Survey Calculation Method:	Minimum Curvature
Well Error:	0.0ft	Output errors are at	2.00 sigma
Reference Wellbore	DD	Database:	EDM 5000.1 US Multi Users DB
Reference Design:	Plan #2	Offset TVD Reference:	Offset Datum

Summary

Site Name	Reference Measured Depth (ft)	Offset Measured Depth (ft)	Distance Between Centres (ft)	Distance Between Ellipses (ft)	Separation Factor	Warning
Offset Well - Wellbore - Design						
N04 696 Pad (NESW Sec4-T6S-R96W)						
NP MF09A N04 696 - DD - DD						Out of range
NP MF09A N04 696 - DD - Plan #3						Out of range
NP MF09A N04 696 - DD - Plan #4						Out of range
NP MF16A N04 696 - DD - DD						Out of range
NP MF16A N04 696 - DD - Plan #1						Out of range
NP MF16A N04 696 - DD - Plan#2						Out of range
O04 696 (3rd)						
NP MF01D-9 O04 696 (was 17C-4) - DD - Plan #2						Out of range
NP MF02A-9 O04 696 (was 18C-4) - DD - Plan #2						Out of range
NP MF06A-3 O04 696 (was 11C-3) - DD - Plan #2	592.2	594.2	10.2	7.7	4.164	CC
NP MF06A-3 O04 696 (was 11C-3) - DD - Plan #2	600.0	602.0	10.2	7.7	4.072	ES
NP MF06A-3 O04 696 (was 11C-3) - DD - Plan #2	700.0	701.8	12.0	8.7	3.695	SF
NP MF06B-3 O04 696 (was 15A-4) - DD - Plan #2	200.0	200.0	8.1	7.4	12.962	CC
NP MF06B-3 O04 696 (was 15A-4) - DD - Plan #2	222.9	222.9	8.1	7.4	11.466	ES
NP MF06B-3 O04 696 (was 15A-4) - DD - Plan #2	1,600.0	1,571.0	98.4	85.8	7.760	SF
NP MF06C-3 O04 696 (was 09C-4) - DD - Plan #2	200.0	200.0	11.2	10.6	18.089	CC, ES
NP MF06C-3 O04 696 (was 09C-4) - DD - Plan #2	1,600.0	1,580.4	91.2	76.3	6.123	SF
NP MF06E-3 O04 696 (was 11B-3) - DD - Plan #2	200.0	200.0	8.2	7.6	13.160	CC, ES
NP MF06E-3 O04 696 (was 11B-3) - DD - Plan #2	1,400.0	1,380.2	65.4	57.6	8.329	SF
NP MF08B-9 O04 696 (was 01B-9) - DD - Plan #2						Out of range
NP MF11B-3 O04 696 (was 14A-3) - DD - Plan #2	531.1	533.0	9.9	7.9	4.910	CC, ES
NP MF11B-3 O04 696 (was 14A-3) - DD - Plan #2	600.0	601.8	11.1	8.6	4.412	SF
NP MF11D-3 O04 696 (was 14B-3) - DD - Plan #2	527.8	530.7	18.6	16.6	9.505	CC, ES
NP MF11D-3 O04 696 (was 14B-3) - DD - Plan #2	700.0	702.7	25.1	21.8	7.621	SF
NP MF11E-3 O04 696 (was 13A-3) - DD - Plan #2	608.5	615.8	35.7	33.4	15.512	CC, ES
NP MF11E-3 O04 696 (was 13A-3) - DD - Plan #2	900.0	907.0	54.9	49.6	10.279	SF
NP MF11G-3 O04 696 (was 14C-3) - DD - Plan #2	300.0	300.0	56.7	55.7	58.440	CC
NP MF11G-3 O04 696 (was 14C-3) - DD - Plan #2	400.0	402.6	57.0	55.7	43.023	ES
NP MF11G-3 O04 696 (was 14C-3) - DD - Plan #2	900.0	909.8	88.4	84.1	20.603	SF
NP MF14A-3 O04 696 (was 13B-3) - DD - Plan #2	441.9	445.5	43.7	42.1	28.203	CC, ES
NP MF14A-3 O04 696 (was 13B-3) - DD - Plan #2	800.0	801.4	75.5	71.4	18.306	SF
NP MF14C-3 O04 696 (was 14D-3) - DD - Plan #2	404.1	407.3	52.9	51.5	38.122	CC, ES
NP MF14C-3 O04 696 (was 14D-3) - DD - Plan #2	800.0	799.2	94.3	90.3	23.360	SF
NP MF14D-3 O04 696 (was 19A-3) - DD - Plan #2	200.0	200.0	76.3	75.7	122.805	CC
NP MF14D-3 O04 696 (was 19A-3) - DD - Plan #2	300.0	300.0	76.3	75.3	78.630	ES
NP MF14D-3 O04 696 (was 19A-3) - DD - Plan #2	700.0	706.5	97.7	95.0	36.350	SF
NP MF14E-3 O04 696 (was 19B-3) - DD - Plan #2	349.0	351.1	74.5	73.3	63.463	CC, ES
NP MF14E-3 O04 696 (was 19B-3) - DD - Plan #2	600.0	601.2	91.3	88.9	38.143	SF
NP MF15A-4 O04 696 (was 11D-3) - DD - Plan #2	328.5	329.0	28.1	27.0	25.764	CC, ES
NP MF15A-4 O04 696 (was 11D-3) - DD - Plan #2	500.0	499.7	36.9	35.0	19.994	SF
NP MF15D-4 O04 696 (was 01B-9) - DD - Plan #2						Out of range
NP MF18B-4 O04 696 (was 01A-9) - DD - Plan #2						Out of range
NP MF19A-3 O04 696 (was 17B-4) - DD - Plan #2	325.4	326.5	84.3	83.3	79.141	CC, ES
NP MF19A-3 O04 696 (was 17B-4) - DD - Plan #2	500.0	502.5	90.8	89.1	51.735	SF
NP MF19C-3 O04 696 (was 20B-3) - DD - Plan #2	310.0	310.5	84.1	83.1	82.554	CC, ES
NP MF19C-3 O04 696 (was 20B-3) - DD - Plan #2	500.0	499.1	94.7	92.9	51.857	SF
NP MF19D-3 O04 696 (was 19C-3) - DD - Plan #2						Out of range
NP MF19E-3 O04 696 (was 19D-3) - DD - Plan #2						Out of range
NP MF20F-3 O04 696 (was 20D-3) - DD - Plan #2						Out of range

CC - Min centre to center distance or convergent point, SF - min separation factor, ES - min ellipse separation

Anticollision Report

Company:	EnCana Oil & Gas (USA) Inc	Local Co-ordinate Reference:	Well NP MF11A-3 O04 696 (was 12C-3)
Project:	North Piceance	TVD Reference:	WELL @ 6044.0ft (Original Well Elev)
Reference Site:	O04 696 (3rd)	MD Reference:	WELL @ 6044.0ft (Original Well Elev)
Site Error:	0.0ft	North Reference:	True
Reference Well:	NP MF11A-3 O04 696 (was 12C-3)	Survey Calculation Method:	Minimum Curvature
Well Error:	0.0ft	Output errors are at	2.00 sigma
Reference Wellbore	DD	Database:	EDM 5000.1 US Multi Users DB
Reference Design:	Plan #2	Offset TVD Reference:	Offset Datum

Offset Design													Offset Site Error:	0.0 ft	
Survey Program: 0-MWD													Offset Well Error:		0.0 ft
Reference															
Offset				Semi Major Axis			Distance								
Measured Depth	Vertical Depth	Measured Depth	Vertical Depth	Reference	Offset	Highside Toolface	Offset Wellbore Centre +N/-S	+E/-W	Between Centres	Between Ellipses	Total Uncertainty Axis	Separation Factor	Warning		
(ft)	(ft)	(ft)	(ft)	(ft)	(ft)	(°)	(ft)	(ft)	(ft)	(ft)	Axis				
0.0	0.0	0.0	0.0	0.0	0.0	-120.64	-11.1	-18.8	21.8						
100.0	100.0	100.0	100.0	0.1	0.1	-120.64	-11.1	-18.8	21.8	21.6	0.27	80.246			
200.0	200.0	200.0	200.0	0.3	0.3	-120.64	-11.1	-18.8	21.8	21.2	0.62	35.164			
300.0	300.0	301.0	300.9	0.5	0.5	-117.55	-9.0	-17.2	19.4	18.5	0.97	19.990			
400.0	400.0	401.6	401.2	0.7	0.7	-147.94	-2.6	-12.5	15.0	13.6	1.34	11.138			
500.0	499.6	502.0	500.7	0.9	1.0	-129.98	8.1	-4.7	11.5	9.7	1.81	6.347			
592.2	591.0	594.2	591.4	1.1	1.3	-104.16	21.6	5.2	10.2	7.7	2.45	4.164 CC			
600.0	598.8	602.0	599.1	1.1	1.4	-101.76	22.9	6.1	10.2	7.7	2.51	4.072 ES			
700.0	697.1	701.8	696.1	1.5	1.8	-74.45	41.7	20.0	12.0	8.7	3.24	3.695 SF			
800.0	794.3	801.3	791.4	1.9	2.4	-57.65	64.6	36.7	15.8	12.0	3.85	4.113			
900.0	890.2	900.5	884.9	2.5	3.0	-48.60	91.3	56.3	20.7	16.3	4.47	4.639			
1,000.0	984.4	999.5	976.3	3.1	3.7	-44.85	121.8	78.7	26.2	21.0	5.16	5.077			
1,100.0	1,076.9	1,098.0	1,065.3	3.8	4.5	-46.50	156.0	103.8	33.3	27.2	6.12	5.438			
1,200.0	1,167.5	1,196.1	1,151.6	4.6	5.4	-49.89	193.6	131.4	42.3	34.9	7.41	5.707			
1,300.0	1,255.8	1,293.7	1,234.9	5.5	6.3	-53.81	234.6	161.4	53.2	44.2	9.00	5.910			
1,400.0	1,341.6	1,390.7	1,315.1	6.4	7.4	-57.66	278.6	193.7	66.2	55.3	10.87	6.087			
1,500.0	1,424.7	1,487.0	1,391.8	7.5	8.5	-61.16	325.5	228.1	81.2	68.2	12.97	6.260			
1,600.0	1,506.4	1,582.6	1,464.9	8.6	9.7	-62.43	375.0	264.5	98.8	83.8	15.01	6.583			

Anticollision Report

Company:	EnCana Oil & Gas (USA) Inc	Local Co-ordinate Reference:	Well NP MF11A-3 O04 696 (was 12C-3)
Project:	North Piceance	TVD Reference:	WELL @ 6044.0ft (Original Well Elev)
Reference Site:	O04 696 (3rd)	MD Reference:	WELL @ 6044.0ft (Original Well Elev)
Site Error:	0.0ft	North Reference:	True
Reference Well:	NP MF11A-3 O04 696 (was 12C-3)	Survey Calculation Method:	Minimum Curvature
Well Error:	0.0ft	Output errors are at	2.00 sigma
Reference Wellbore	DD	Database:	EDM 5000.1 US Multi Users DB
Reference Design:	Plan #2	Offset TVD Reference:	Offset Datum

Offset Design													Offset Site Error:	0.0 ft	
Survey Program: 0-MWD													Offset Well Error:		0.0 ft
Reference															
Offset				Semi Major Axis			Distance								
Measured Depth (ft)	Vertical Depth (ft)	Measured Depth (ft)	Vertical Depth (ft)	Reference (ft)	Offset (ft)	Highside Toolface (°)	Offset Wellbore Centre +N/-S (ft)	+E/-W (ft)	Between Centres (ft)	Between Ellipses (ft)	Total Uncertainty Axis	Separation Factor	Warning		
0.0	0.0	0.0	0.0	0.0	0.0	-51.08	5.1	-6.3	8.1						
100.0	100.0	100.0	100.0	0.1	0.1	-51.08	5.1	-6.3	8.1	7.8	0.27	29.579			
200.0	200.0	200.0	200.0	0.3	0.3	-51.08	5.1	-6.3	8.1	7.4	0.62	12.962	CC		
222.9	222.9	222.9	222.9	0.4	0.4	-50.11	5.2	-6.2	8.1	7.4	0.70	11.466	ES		
300.0	300.0	299.9	299.9	0.5	0.5	-33.19	7.1	-4.7	8.5	7.5	0.98	8.695			
400.0	400.0	399.5	399.1	0.7	0.7	-47.57	13.2	0.2	11.4	10.0	1.35	8.421			
500.0	499.6	498.8	497.6	0.9	1.0	-34.42	23.4	8.1	15.6	13.9	1.73	9.013			
600.0	598.8	597.9	595.0	1.1	1.4	-27.55	37.5	19.2	20.3	18.2	2.11	9.600			
700.0	697.1	696.6	691.1	1.5	1.8	-23.69	55.5	33.4	25.2	22.7	2.51	10.039			
800.0	794.3	795.2	785.6	1.9	2.3	-21.42	77.4	50.6	30.2	27.3	2.92	10.324			
900.0	890.2	893.5	878.3	2.5	2.9	-20.07	103.0	70.7	35.2	31.8	3.36	10.470			
1,000.0	984.4	991.5	969.0	3.1	3.6	-20.49	132.2	93.6	40.2	36.3	3.83	10.490			
1,100.0	1,076.9	1,089.2	1,057.4	3.8	4.4	-24.56	164.9	119.3	46.0	41.5	4.48	10.261			
1,200.0	1,167.5	1,186.6	1,143.3	4.6	5.3	-29.76	201.0	147.7	53.1	47.6	5.44	9.745			
1,300.0	1,255.8	1,283.5	1,226.3	5.5	6.3	-35.42	240.3	178.6	61.5	54.7	6.79	9.064			
1,400.0	1,341.6	1,379.9	1,306.3	6.4	7.3	-41.06	282.6	211.9	71.6	63.1	8.52	8.404			
1,500.0	1,424.7	1,475.8	1,383.0	7.5	8.4	-46.37	327.8	247.4	83.5	72.9	10.60	7.876			
1,600.0	1,506.4	1,571.0	1,456.2	8.6	9.6	-49.35	375.6	284.9	98.4	85.8	12.69	7.760	SF		

Anticollision Report

Company:	EnCana Oil & Gas (USA) Inc	Local Co-ordinate Reference:	Well NP MF11A-3 O04 696 (was 12C-3)
Project:	North Piceance	TVD Reference:	WELL @ 6044.0ft (Original Well Elev)
Reference Site:	O04 696 (3rd)	MD Reference:	WELL @ 6044.0ft (Original Well Elev)
Site Error:	0.0ft	North Reference:	True
Reference Well:	NP MF11A-3 O04 696 (was 12C-3)	Survey Calculation Method:	Minimum Curvature
Well Error:	0.0ft	Output errors are at	2.00 sigma
Reference Wellbore	DD	Database:	EDM 5000.1 US Multi Users DB
Reference Design:	Plan #2	Offset TVD Reference:	Offset Datum

Offset Design													Offset Site Error:	0.0 ft	
Survey Program: 0-MWD													Offset Well Error:		0.0 ft
Reference															
Offset				Semi Major Axis			Distance								
Measured Depth (ft)	Vertical Depth (ft)	Measured Depth (ft)	Vertical Depth (ft)	Reference (ft)	Offset (ft)	Highside Toolface (°)	Offset Wellbore Centre +N/-S (ft)	+E/-W (ft)	Between Centres (ft)	Between Ellipses (ft)	Total Uncertainty Axis	Separation Factor	Warning		
0.0	0.0	0.0	0.0	0.0	0.0	-8.01	11.1	-1.6	11.2						
100.0	100.0	100.0	100.0	0.1	0.1	-8.01	11.1	-1.6	11.2	11.0	0.27	41.280			
200.0	200.0	200.0	200.0	0.3	0.3	-8.01	11.1	-1.6	11.2	10.6	0.62	18.089	CC, ES		
300.0	300.0	299.3	299.3	0.5	0.5	-6.70	13.7	-1.6	13.8	12.9	0.97	14.200			
400.0	400.0	398.4	398.1	0.7	0.7	-49.31	21.3	-1.5	19.7	18.4	1.32	14.903			
500.0	499.6	497.6	496.5	0.9	1.0	-51.73	32.9	1.4	25.6	23.9	1.71	14.963			
600.0	598.8	596.7	594.3	1.1	1.3	-52.63	47.8	8.0	31.0	28.8	2.18	14.224			
700.0	697.1	695.7	691.0	1.5	1.7	-52.76	66.2	18.4	35.8	33.1	2.75	13.008			
800.0	794.3	794.7	786.5	1.9	2.2	-52.39	88.0	32.4	40.0	36.6	3.45	11.616			
900.0	890.2	893.5	880.4	2.5	2.7	-51.67	113.0	50.1	43.7	39.4	4.26	10.249			
1,000.0	984.4	992.2	972.6	3.1	3.4	-51.77	141.2	71.3	46.9	41.7	5.19	9.039			
1,100.0	1,076.9	1,090.8	1,062.7	3.8	4.1	-54.04	172.6	96.0	50.9	44.6	6.29	8.092			
1,200.0	1,167.5	1,189.2	1,150.5	4.6	5.0	-56.42	206.9	124.1	56.3	48.7	7.62	7.393			
1,300.0	1,255.8	1,287.4	1,235.8	5.5	5.9	-58.84	244.1	155.5	63.0	53.8	9.17	6.870			
1,400.0	1,341.6	1,385.4	1,318.3	6.4	6.9	-61.24	284.1	190.1	70.9	60.0	10.95	6.478			
1,500.0	1,424.7	1,483.1	1,397.8	7.5	8.0	-63.54	326.7	227.7	80.2	67.2	12.96	6.186			
1,600.0	1,506.4	1,580.4	1,474.0	8.6	9.1	-63.56	371.7	268.2	91.2	76.3	14.90	6.123	SF		

Anticollision Report

Company:	EnCana Oil & Gas (USA) Inc	Local Co-ordinate Reference:	Well NP MF11A-3 O04 696 (was 12C-3)
Project:	North Piceance	TVD Reference:	WELL @ 6044.0ft (Original Well Elev)
Reference Site:	O04 696 (3rd)	MD Reference:	WELL @ 6044.0ft (Original Well Elev)
Site Error:	0.0ft	North Reference:	True
Reference Well:	NP MF11A-3 O04 696 (was 12C-3)	Survey Calculation Method:	Minimum Curvature
Well Error:	0.0ft	Output errors are at	2.00 sigma
Reference Wellbore	DD	Database:	EDM 5000.1 US Multi Users DB
Reference Design:	Plan #2	Offset TVD Reference:	Offset Datum

Offset Design													Offset Site Error:	0.0 ft	
Survey Program: 0-MWD													Offset Well Error:		0.0 ft
Reference															
Offset				Semi Major Axis			Distance								
Measured Depth (ft)	Vertical Depth (ft)	Measured Depth (ft)	Vertical Depth (ft)	Reference (ft)	Offset (ft)	Highside Toolface (°)	Offset Wellbore Centre +N/-S (ft)	+E/-W (ft)	Between Centres (ft)	Between Ellipses (ft)	Total Uncertainty Axis	Separation Factor	Warning		
0.0	0.0	0.0	0.0	0.0	0.0	42.11	6.1	5.5	8.2						
100.0	100.0	100.0	100.0	0.1	0.1	42.11	6.1	5.5	8.2	7.9	0.27	30.033			
200.0	200.0	200.0	200.0	0.3	0.3	42.11	6.1	5.5	8.2	7.6	0.62	13.160	CC, ES		
300.0	300.0	299.5	299.5	0.5	0.5	48.26	7.0	7.9	10.6	9.6	0.98	10.844			
400.0	400.0	398.7	398.3	0.7	0.7	19.26	9.9	15.1	15.6	14.3	1.32	11.854			
500.0	499.6	497.6	496.4	0.9	1.0	29.93	15.2	26.6	21.4	19.7	1.67	12.773			
600.0	598.8	596.3	593.6	1.1	1.3	36.21	24.2	41.5	27.6	25.5	2.08	13.243			
700.0	697.1	694.9	689.6	1.5	1.8	40.13	37.0	59.5	33.9	31.3	2.58	13.109			
800.0	794.3	793.2	784.2	1.9	2.3	42.78	53.6	80.6	40.2	37.0	3.21	12.505			
900.0	890.2	891.5	877.2	2.5	2.9	44.68	74.0	104.6	46.5	42.5	3.99	11.643			
1,000.0	984.4	989.5	968.4	3.1	3.5	44.97	98.0	131.6	52.6	47.6	4.90	10.718			
1,100.0	1,076.9	1,087.5	1,057.5	3.8	4.3	42.07	125.6	161.5	57.6	51.7	5.86	9.832			
1,200.0	1,167.5	1,185.3	1,144.3	4.6	5.2	38.16	156.7	194.1	61.3	54.5	6.74	9.084			
1,300.0	1,255.8	1,282.9	1,228.5	5.5	6.1	33.26	191.2	229.4	63.8	56.3	7.46	8.551			
1,400.0	1,341.6	1,380.2	1,309.8	6.4	7.2	27.29	228.9	267.2	65.4	57.6	7.85	8.329	SF		
1,500.0	1,424.7	1,477.1	1,388.1	7.5	8.3	20.13	269.7	307.3	66.6	58.8	7.75	8.588			
1,600.0	1,506.4	1,576.7	1,466.8	8.6	9.4	13.22	313.4	349.8	68.3	61.0	7.24	9.433			
1,700.0	1,588.0	1,676.3	1,545.6	9.7	10.6	6.74	357.0	392.4	70.9	64.3	6.63	10.689			
1,800.0	1,669.6	1,776.0	1,624.4	10.8	11.7	0.80	400.7	435.0	74.4	68.1	6.27	11.859			
1,900.0	1,751.3	1,875.6	1,703.2	11.9	12.9	-4.57	444.4	477.6	78.6	72.1	6.48	12.119			
2,000.0	1,832.9	1,975.3	1,782.0	13.0	14.0	-9.36	488.1	520.1	83.4	76.0	7.39	11.285			
2,100.0	1,914.5	2,074.9	1,860.8	14.1	15.2	-13.60	531.8	562.7	88.7	79.9	8.86	10.019			
2,200.0	1,996.2	2,174.6	1,939.6	15.2	16.4	-17.35	575.5	605.3	94.5	83.8	10.68	8.850			

CC - Min centre to center distance or convergent point, SF - min separation factor, ES - min ellipse separation

Anticollision Report

Company:	EnCana Oil & Gas (USA) Inc	Local Co-ordinate Reference:	Well NP MF11A-3 O04 696 (was 12C-3)
Project:	North Piceance	TVD Reference:	WELL @ 6044.0ft (Original Well Elev)
Reference Site:	O04 696 (3rd)	MD Reference:	WELL @ 6044.0ft (Original Well Elev)
Site Error:	0.0ft	North Reference:	True
Reference Well:	NP MF11A-3 O04 696 (was 12C-3)	Survey Calculation Method:	Minimum Curvature
Well Error:	0.0ft	Output errors are at	2.00 sigma
Reference Wellbore	DD	Database:	EDM 5000.1 US Multi Users DB
Reference Design:	Plan #2	Offset TVD Reference:	Offset Datum

Offset Design													Offset Site Error:	0.0 ft	
Survey Program: 0-MWD													Offset Well Error:		0.0 ft
Reference															
Offset				Semi Major Axis			Distance								
Measured Depth (ft)	Vertical Depth (ft)	Measured Depth (ft)	Vertical Depth (ft)	Reference (ft)	Offset (ft)	Highside Toolface (°)	Offset Wellbore Centre +N/-S (ft)	+E/-W (ft)	Between Centres (ft)	Between Ellipses (ft)	Total Uncertainty Axis	Separation Factor	Warning		
0.0	0.0	0.0	0.0	0.0	0.0	-142.25	-16.2	-12.5	20.5						
100.0	100.0	100.0	100.0	0.1	0.1	-142.25	-16.2	-12.5	20.5	20.2	0.27	75.193			
200.0	200.0	200.0	200.0	0.3	0.3	-142.25	-16.2	-12.5	20.5	19.9	0.62	32.950			
300.0	300.0	300.9	300.9	0.5	0.5	-144.57	-14.6	-10.4	17.9	17.0	0.98	18.337			
400.0	400.0	401.6	401.2	0.7	0.7	165.58	-9.9	-4.0	13.2	11.9	1.33	9.901			
500.0	499.6	501.9	500.6	0.9	1.0	140.89	-2.0	6.6	10.1	8.3	1.80	5.617			
531.1	530.5	533.0	531.3	1.0	1.1	129.85	1.0	10.7	9.9	7.9	2.01	4.910	CC, ES		
600.0	598.8	601.8	598.9	1.1	1.4	105.74	8.9	21.3	11.1	8.6	2.51	4.412	SF		
700.0	697.1	701.4	695.7	1.5	1.8	83.96	22.7	40.1	16.2	13.0	3.26	4.981			
800.0	794.3	800.7	790.8	1.9	2.4	74.55	39.5	62.8	23.6	19.6	4.07	5.804			
900.0	890.2	899.5	884.0	2.5	3.0	70.60	59.1	89.3	32.4	27.3	5.03	6.436			
1,000.0	984.4	998.0	975.0	3.1	3.7	67.93	81.5	119.6	42.1	35.9	6.15	6.845			
1,100.0	1,076.9	1,096.2	1,063.7	3.8	4.5	63.88	106.6	153.4	51.4	44.0	7.40	6.944			
1,200.0	1,167.5	1,194.2	1,149.9	4.6	5.4	60.25	134.3	190.9	59.9	51.1	8.74	6.851			
1,300.0	1,255.8	1,291.9	1,233.4	5.5	6.4	56.89	164.4	231.7	67.6	57.4	10.15	6.658			
1,400.0	1,341.6	1,389.4	1,314.0	6.4	7.5	53.69	197.0	275.7	74.4	62.9	11.59	6.422			
1,500.0	1,424.7	1,487.0	1,391.8	7.5	8.7	50.60	232.1	323.1	80.5	67.5	13.04	6.176			
1,600.0	1,506.4	1,586.9	1,470.4	8.6	9.9	49.10	268.7	372.7	85.7	71.2	14.52	5.902			
1,700.0	1,588.0	1,686.7	1,548.9	9.7	11.1	47.80	305.4	422.3	90.9	75.0	15.96	5.696			
1,800.0	1,669.6	1,786.6	1,627.4	10.8	12.3	46.63	342.1	471.9	96.2	78.8	17.37	5.537			

Anticollision Report

Company:	EnCana Oil & Gas (USA) Inc	Local Co-ordinate Reference:	Well NP MF11A-3 O04 696 (was 12C-3)
Project:	North Piceance	TVD Reference:	WELL @ 6044.0ft (Original Well Elev)
Reference Site:	O04 696 (3rd)	MD Reference:	WELL @ 6044.0ft (Original Well Elev)
Site Error:	0.0ft	North Reference:	True
Reference Well:	NP MF11A-3 O04 696 (was 12C-3)	Survey Calculation Method:	Minimum Curvature
Well Error:	0.0ft	Output errors are at	2.00 sigma
Reference Wellbore	DD	Database:	EDM 5000.1 US Multi Users DB
Reference Design:	Plan #2	Offset TVD Reference:	Offset Datum

Offset Design													Offset Site Error:	0.0 ft	
Survey Program: 0-MWD													Offset Well Error:		0.0 ft
Reference															
Offset															
Semi Major Axis															
Distance															
Measured Depth (ft)	Vertical Depth (ft)	Measured Depth (ft)	Vertical Depth (ft)	Reference (ft)	Offset (ft)	Highside Toolface (°)	Offset Wellbore Centre +N/-S (ft)	+E/-W (ft)	Between Centres (ft)	Between Ellipses (ft)	Total Uncertainty Axis	Separation Factor	Warning		
0.0	0.0	0.0	0.0	0.0	0.0	-142.25	-22.3	-17.2	28.2						
100.0	100.0	100.0	100.0	0.1	0.1	-142.25	-22.3	-17.2	28.2	27.9	0.27	103.390			
200.0	200.0	200.0	200.0	0.3	0.3	-142.25	-22.3	-17.2	28.2	27.5	0.62	45.306			
300.0	300.0	301.3	301.2	0.5	0.5	-144.54	-20.9	-14.9	25.7	24.7	0.98	26.240			
400.0	400.0	402.2	401.8	0.7	0.7	167.01	-16.9	-8.0	21.3	20.0	1.34	15.912			
500.0	499.6	502.8	501.5	0.9	1.0	150.01	-10.3	3.5	18.7	16.9	1.79	10.482			
527.8	527.3	530.7	529.1	1.0	1.1	143.86	-8.0	7.5	18.6	16.6	1.95	9.505 CC, ES			
600.0	598.8	603.0	600.0	1.1	1.4	127.22	-1.2	19.5	19.7	17.3	2.44	8.067			
700.0	697.1	702.7	696.9	1.5	1.8	108.38	10.5	39.8	25.1	21.8	3.29	7.621 SF			
800.0	794.3	802.0	792.0	1.9	2.4	97.02	24.6	64.4	33.9	29.7	4.26	7.976			
900.0	890.2	900.7	885.1	2.5	3.0	90.76	41.0	93.0	45.2	39.9	5.34	8.465			
1,000.0	984.4	998.9	975.8	3.1	3.7	86.23	59.7	125.6	58.3	51.8	6.57	8.879			
1,100.0	1,076.9	1,096.7	1,064.1	3.8	4.6	81.32	80.6	162.0	71.6	63.6	7.98	8.974			
1,200.0	1,167.5	1,194.2	1,149.9	4.6	5.5	77.56	103.7	202.2	84.4	74.9	9.53	8.852			
1,300.0	1,255.8	1,292.9	1,234.9	5.5	6.4	75.19	128.7	245.7	96.2	85.0	11.23	8.564			

Anticollision Report

Company:	EnCana Oil & Gas (USA) Inc	Local Co-ordinate Reference:	Well NP MF11A-3 O04 696 (was 12C-3)
Project:	North Piceance	TVD Reference:	WELL @ 6044.0ft (Original Well Elev)
Reference Site:	O04 696 (3rd)	MD Reference:	WELL @ 6044.0ft (Original Well Elev)
Site Error:	0.0ft	North Reference:	True
Reference Well:	NP MF11A-3 O04 696 (was 12C-3)	Survey Calculation Method:	Minimum Curvature
Well Error:	0.0ft	Output errors are at	2.00 sigma
Reference Wellbore	DD	Database:	EDM 5000.1 US Multi Users DB
Reference Design:	Plan #2	Offset TVD Reference:	Offset Datum

Offset Design													Offset Site Error:	0.0 ft	
Survey Program: 0-MWD													Offset Well Error:		0.0 ft
Reference															
Offset															
Semi Major Axis															
Distance															
Measured Depth (ft)	Vertical Depth (ft)	Measured Depth (ft)	Vertical Depth (ft)	Reference (ft)	Offset (ft)	Highside Toolface (°)	Offset Wellbore Centre +N/-S (ft)	+E/-W (ft)	Between Centres (ft)	Between Ellipses (ft)	Total Uncertainty Axis	Separation Factor	Warning		
0.0	0.0	0.0	0.0	0.0	0.0	-132.82	-33.4	-36.0	49.1						
100.0	100.0	100.0	100.0	0.1	0.1	-132.82	-33.4	-36.0	49.1	48.9	0.27	180.419			
200.0	200.0	200.0	200.0	0.3	0.3	-132.82	-33.4	-36.0	49.1	48.5	0.62	79.060			
300.0	300.0	302.4	302.4	0.5	0.5	-133.86	-32.2	-33.5	46.6	45.6	0.98	47.444			
400.0	400.0	404.4	404.1	0.7	0.7	-177.94	-28.8	-26.1	41.7	40.4	1.34	31.192			
500.0	499.6	506.1	504.8	0.9	1.0	173.50	-23.1	-13.8	37.6	35.9	1.73	21.771			
600.0	598.8	607.2	604.1	1.1	1.4	159.96	-15.2	3.2	35.7	33.5	2.24	15.918			
608.5	607.2	615.8	612.6	1.2	1.4	158.61	-14.4	4.9	35.7	33.4	2.30	15.512 CC, ES			
700.0	697.1	707.8	701.8	1.5	1.9	143.34	-5.2	24.9	37.5	34.5	3.02	12.409			
800.0	794.3	807.7	797.5	1.9	2.4	127.90	6.9	51.0	44.0	39.9	4.09	10.759			
900.0	890.2	907.0	890.9	2.5	3.1	116.28	21.0	81.3	54.9	49.6	5.34	10.279 SF			
1,000.0	984.4	1,005.5	981.9	3.1	3.8	107.30	37.0	115.8	69.2	62.5	6.71	10.318			
1,100.0	1,076.9	1,103.6	1,070.2	3.8	4.6	99.38	54.8	154.3	84.7	76.5	8.23	10.290			

CC - Min centre to center distance or convergent point, SF - min separation factor, ES - min ellipse separation

Anticollision Report

Company:	EnCana Oil & Gas (USA) Inc	Local Co-ordinate Reference:	Well NP MF11A-3 O04 696 (was 12C-3)
Project:	North Piceance	TVD Reference:	WELL @ 6044.0ft (Original Well Elev)
Reference Site:	O04 696 (3rd)	MD Reference:	WELL @ 6044.0ft (Original Well Elev)
Site Error:	0.0ft	North Reference:	True
Reference Well:	NP MF11A-3 O04 696 (was 12C-3)	Survey Calculation Method:	Minimum Curvature
Well Error:	0.0ft	Output errors are at	2.00 sigma
Reference Wellbore	DD	Database:	EDM 5000.1 US Multi Users DB
Reference Design:	Plan #2	Offset TVD Reference:	Offset Datum

Offset Design													Offset Site Error:	0.0 ft	
Survey Program: 0-MWD													Offset Well Error:		0.0 ft
Reference															
Offset															
Semi Major Axis															
Distance															
Measured Depth (ft)	Vertical Depth (ft)	Measured Depth (ft)	Vertical Depth (ft)	Reference (ft)	Offset (ft)	Highside Toolface (°)	Offset Wellbore Centre +N/-S (ft)	+E/-W (ft)	Between Centres (ft)	Between Ellipses (ft)	Total Uncertainty Axis	Separation Factor	Warning		
0.0	0.0	0.0	0.0	0.0	0.0	-134.09	-39.5	-40.7	56.7						
100.0	100.0	100.0	100.0	0.1	0.1	-134.09	-39.5	-40.7	56.7	56.4	0.27	208.287			
200.0	200.0	200.0	200.0	0.3	0.3	-134.09	-39.5	-40.7	56.7	56.1	0.62	91.272			
300.0	300.0	300.0	300.0	0.5	0.5	-134.09	-39.5	-40.7	56.7	55.7	0.97	58.440	CC		
400.0	400.0	402.6	402.6	0.7	0.7	-175.76	-38.8	-38.1	57.0	55.7	1.33	43.023	ES		
500.0	499.6	505.0	504.7	0.9	0.9	179.39	-36.8	-30.1	58.2	56.5	1.69	34.414			
600.0	598.8	607.1	605.8	1.1	1.2	171.86	-33.5	-16.8	61.0	58.9	2.10	29.062			
700.0	697.1	708.7	705.6	1.5	1.5	162.68	-28.9	1.5	66.4	63.8	2.62	25.388			
800.0	794.3	809.7	803.7	1.9	2.0	153.17	-23.0	24.8	75.4	72.1	3.33	22.638			
900.0	890.2	909.8	899.5	2.5	2.5	144.45	-16.0	52.9	88.4	84.1	4.29	20.603	SF		

CC - Min centre to center distance or convergent point, SF - min separation factor, ES - min ellipse separation

Anticollision Report

Company:	EnCana Oil & Gas (USA) Inc	Local Co-ordinate Reference:	Well NP MF11A-3 O04 696 (was 12C-3)
Project:	North Piceance	TVD Reference:	WELL @ 6044.0ft (Original Well Elev)
Reference Site:	O04 696 (3rd)	MD Reference:	WELL @ 6044.0ft (Original Well Elev)
Site Error:	0.0ft	North Reference:	True
Reference Well:	NP MF11A-3 O04 696 (was 12C-3)	Survey Calculation Method:	Minimum Curvature
Well Error:	0.0ft	Output errors are at	2.00 sigma
Reference Wellbore	DD	Database:	EDM 5000.1 US Multi Users DB
Reference Design:	Plan #2	Offset TVD Reference:	Offset Datum

Offset Design													Offset Site Error:	0.0 ft	
Survey Program: 0-MWD													Offset Well Error:		0.0 ft
Reference															
Offset															
Semi Major Axis															
Distance															
Measured Depth (ft)	Vertical Depth (ft)	Measured Depth (ft)	Vertical Depth (ft)	Reference (ft)	Offset (ft)	Highside Toolface (°)	Offset Wellbore Centre +N/-S (ft)	+E/-W (ft)	Between Centres (ft)	Between Ellipses (ft)	Total Uncertainty Axis	Separation Factor	Warning		
0.0	0.0	0.0	0.0	0.0	0.0	-142.25	-38.4	-29.8	48.6						
100.0	100.0	100.0	100.0	0.1	0.1	-142.25	-38.4	-29.8	48.6	48.4	0.27	178.583			
200.0	200.0	200.0	200.0	0.3	0.3	-142.25	-38.4	-29.8	48.6	48.0	0.62	78.256			
300.0	300.0	301.8	301.8	0.5	0.5	-144.51	-38.0	-27.1	46.7	45.7	0.98	47.507			
400.0	400.0	403.2	402.8	0.7	0.7	168.32	-36.6	-19.1	44.0	42.6	1.36	32.295			
441.9	441.7	445.5	444.8	0.8	0.8	163.90	-35.8	-14.2	43.7	42.1	1.55	28.203	CC, ES		
500.0	499.6	504.1	502.8	0.9	1.0	156.71	-34.4	-6.0	44.4	42.5	1.82	24.372			
600.0	598.8	604.2	601.2	1.1	1.4	143.27	-31.3	12.2	49.4	47.0	2.42	20.426			
700.0	697.1	703.4	697.5	1.5	1.8	131.37	-27.3	35.2	59.9	56.7	3.19	18.775			
800.0	794.3	801.4	791.6	1.9	2.4	122.48	-22.6	62.8	75.5	71.4	4.12	18.306	SF		
900.0	890.2	898.3	882.9	2.5	3.0	116.28	-17.2	94.7	95.5	90.3	5.21	18.339			

CC - Min centre to center distance or convergent point, SF - min separation factor, ES - min ellipse separation

Anticollision Report

Company:	EnCana Oil & Gas (USA) Inc	Local Co-ordinate Reference:	Well NP MF11A-3 O04 696 (was 12C-3)
Project:	North Piceance	TVD Reference:	WELL @ 6044.0ft (Original Well Elev)
Reference Site:	O04 696 (3rd)	MD Reference:	WELL @ 6044.0ft (Original Well Elev)
Site Error:	0.0ft	North Reference:	True
Reference Well:	NP MF11A-3 O04 696 (was 12C-3)	Survey Calculation Method:	Minimum Curvature
Well Error:	0.0ft	Output errors are at	2.00 sigma
Reference Wellbore	DD	Database:	EDM 5000.1 US Multi Users DB
Reference Design:	Plan #2	Offset TVD Reference:	Offset Datum

Offset Design													Offset Site Error:	0.0 ft	
Survey Program: 0-MWD													Offset Well Error:		0.0 ft
Reference															
Offset															
Semi Major Axis															
Distance															
Measured Depth (ft)	Vertical Depth (ft)	Measured Depth (ft)	Vertical Depth (ft)	Reference (ft)	Offset (ft)	Highside Toolface (°)	Offset Wellbore Centre +N/-S (ft)	+E/-W (ft)	Between Centres (ft)	Between Ellipses (ft)	Total Uncertainty Axis	Separation Factor	Warning		
0.0	0.0	0.0	0.0	0.0	0.0	-142.25	-44.5	-34.5	56.3						
100.0	100.0	100.0	100.0	0.1	0.1	-142.25	-44.5	-34.5	56.3	56.0	0.27	206.780			
200.0	200.0	200.0	200.0	0.3	0.3	-142.25	-44.5	-34.5	56.3	55.7	0.62	90.612			
300.0	300.0	301.8	301.7	0.5	0.5	-144.47	-44.5	-31.8	54.7	53.7	0.98	55.624			
400.0	400.0	403.1	402.8	0.7	0.7	168.71	-44.3	-23.7	52.9	51.5	1.37	38.638			
404.1	404.0	407.3	406.9	0.7	0.7	168.34	-44.3	-23.2	52.9	51.5	1.39	38.122 CC, ES			
500.0	499.6	503.8	502.5	0.9	1.0	158.16	-44.1	-10.4	54.9	53.1	1.83	29.961			
600.0	598.8	603.5	600.5	1.1	1.4	146.39	-43.7	8.0	62.2	59.8	2.42	25.717			
700.0	697.1	702.1	696.3	1.5	1.8	136.01	-43.3	31.1	75.4	72.3	3.15	23.925			
800.0	794.3	799.2	789.4	1.9	2.4	128.07	-42.8	58.7	94.3	90.3	4.04	23.360 SF			

Anticollision Report

Company:	EnCana Oil & Gas (USA) Inc	Local Co-ordinate Reference:	Well NP MF11A-3 O04 696 (was 12C-3)
Project:	North Piceance	TVD Reference:	WELL @ 6044.0ft (Original Well Elev)
Reference Site:	O04 696 (3rd)	MD Reference:	WELL @ 6044.0ft (Original Well Elev)
Site Error:	0.0ft	North Reference:	True
Reference Well:	NP MF11A-3 O04 696 (was 12C-3)	Survey Calculation Method:	Minimum Curvature
Well Error:	0.0ft	Output errors are at	2.00 sigma
Reference Wellbore	DD	Database:	EDM 5000.1 US Multi Users DB
Reference Design:	Plan #2	Offset TVD Reference:	Offset Datum

Offset Design													Offset Site Error:	0.0 ft	
Survey Program: 0-MWD													Offset Well Error:		0.0 ft
Reference															
Offset															
Semi Major Axis															
Distance															
Measured Depth (ft)	Vertical Depth (ft)	Measured Depth (ft)	Vertical Depth (ft)	Reference (ft)	Offset (ft)	Highside Toolface (°)	Offset Wellbore Centre +N/-S (ft)	+E/-W (ft)	Between Centres (ft)	Between Ellipses (ft)	Total Uncertainty Axis	Separation Factor	Warning		
0.0	0.0	0.0	0.0	0.0	0.0	-135.73	-54.6	-53.3	76.3						
100.0	100.0	100.0	100.0	0.1	0.1	-135.73	-54.6	-53.3	76.3	76.0	0.27	280.246			
200.0	200.0	200.0	200.0	0.3	0.3	-135.73	-54.6	-53.3	76.3	75.7	0.62	122.805 CC			
300.0	300.0	300.0	300.0	0.5	0.5	-135.73	-54.6	-53.3	76.3	75.3	0.97	78.630 ES			
400.0	400.0	402.5	402.5	0.7	0.7	-177.45	-54.9	-50.5	77.2	75.9	1.33	58.189			
500.0	499.6	504.7	504.3	0.9	0.9	177.67	-55.5	-42.3	80.4	78.7	1.71	47.132			
600.0	598.8	606.2	604.9	1.1	1.2	170.48	-56.7	-28.9	86.9	84.7	2.14	40.526			
700.0	697.1	706.5	703.5	1.5	1.5	162.25	-58.2	-10.3	97.7	95.0	2.69	36.350 SF			

Anticollision Report

Company:	EnCana Oil & Gas (USA) Inc	Local Co-ordinate Reference:	Well NP MF11A-3 O04 696 (was 12C-3)
Project:	North Piceance	TVD Reference:	WELL @ 6044.0ft (Original Well Elev)
Reference Site:	O04 696 (3rd)	MD Reference:	WELL @ 6044.0ft (Original Well Elev)
Site Error:	0.0ft	North Reference:	True
Reference Well:	NP MF11A-3 O04 696 (was 12C-3)	Survey Calculation Method:	Minimum Curvature
Well Error:	0.0ft	Output errors are at	2.00 sigma
Reference Wellbore	DD	Database:	EDM 5000.1 US Multi Users DB
Reference Design:	Plan #2	Offset TVD Reference:	Offset Datum

Offset Design													Offset Site Error:	0.0 ft	
Survey Program: 0-MWD													Offset Well Error:		0.0 ft
Reference															
Offset															
Semi Major Axis															
Distance															
Measured Depth (ft)	Vertical Depth (ft)	Measured Depth (ft)	Vertical Depth (ft)	Reference (ft)	Offset (ft)	Highside Toolface (°)	Offset Wellbore Centre +N/-S (ft)	+E/-W (ft)	Between Centres (ft)	Between Ellipses (ft)	Total Uncertainty Axis	Separation Factor	Warning		
0.0	0.0	0.0	0.0	0.0	0.0	-141.79	-59.7	-47.0	76.0						
100.0	100.0	100.0	100.0	0.1	0.1	-141.79	-59.7	-47.0	76.0	75.7	0.27	279.044			
200.0	200.0	200.0	200.0	0.3	0.3	-141.79	-59.7	-47.0	76.0	75.4	0.62	122.278			
300.0	300.0	301.5	301.4	0.5	0.5	-143.68	-60.4	-44.4	75.0	74.0	0.98	76.407			
349.0	349.0	351.1	350.9	0.6	0.6	174.00	-61.3	-41.2	74.5	73.3	1.17	63.463	CC, ES		
400.0	400.0	402.5	402.1	0.7	0.7	170.72	-62.5	-36.6	75.1	73.7	1.38	54.539			
500.0	499.6	502.5	501.3	0.9	1.0	162.45	-66.0	-23.9	80.1	78.3	1.84	43.547			
600.0	598.8	601.2	598.3	1.1	1.4	153.38	-70.7	-6.5	91.3	88.9	2.39	38.143	SF		

Anticollision Report

Company:	EnCana Oil & Gas (USA) Inc	Local Co-ordinate Reference:	Well NP MF11A-3 O04 696 (was 12C-3)
Project:	North Piceance	TVD Reference:	WELL @ 6044.0ft (Original Well Elev)
Reference Site:	O04 696 (3rd)	MD Reference:	WELL @ 6044.0ft (Original Well Elev)
Site Error:	0.0ft	North Reference:	True
Reference Well:	NP MF11A-3 O04 696 (was 12C-3)	Survey Calculation Method:	Minimum Curvature
Well Error:	0.0ft	Output errors are at	2.00 sigma
Reference Wellbore	DD	Database:	EDM 5000.1 US Multi Users DB
Reference Design:	Plan #2	Offset TVD Reference:	Offset Datum

Offset Design													Offset Site Error:	0.0 ft	
Survey Program: 0-MWD													Offset Well Error:		0.0 ft
Reference															
Offset				Semi Major Axis			Distance								
Measured Depth (ft)	Vertical Depth (ft)	Measured Depth (ft)	Vertical Depth (ft)	Reference (ft)	Offset (ft)	Highside Toolface (°)	Offset Wellbore Centre +N/-S (ft)	+E/-W (ft)	Between Centres (ft)	Between Ellipses (ft)	Total Uncertainty Axis	Separation Factor	Warning		
0.0	0.0	0.0	0.0	0.0	0.0	-126.20	-17.2	-23.5	29.1						
100.0	100.0	100.0	100.0	0.1	0.1	-126.20	-17.2	-23.5	29.1	28.8	0.27	106.956			
200.0	200.0	200.0	200.0	0.3	0.3	-126.20	-17.2	-23.5	29.1	28.5	0.62	46.868			
300.0	300.0	300.4	300.4	0.5	0.5	-121.18	-14.7	-24.2	28.3	27.4	0.97	29.082			
328.5	328.5	329.0	328.9	0.5	0.6	-157.95	-13.0	-24.7	28.1	27.0	1.09	25.764	CC, ES		
400.0	400.0	400.4	400.1	0.7	0.7	-147.94	-7.1	-26.4	29.5	28.2	1.38	21.469			
500.0	499.6	499.7	498.4	0.9	1.0	-133.87	5.3	-30.0	36.9	35.0	1.84	19.994	SF		
600.0	598.8	597.8	594.9	1.1	1.4	-124.04	22.4	-35.0	50.4	48.0	2.41	20.960			
700.0	697.1	695.2	689.8	1.5	1.8	-118.56	43.7	-41.1	69.3	66.3	3.06	22.645			
800.0	794.3	792.8	784.6	1.9	2.2	-117.67	65.7	-47.5	91.2	87.4	3.81	23.967			

Anticollision Report

Company:	EnCana Oil & Gas (USA) Inc	Local Co-ordinate Reference:	Well NP MF11A-3 O04 696 (was 12C-3)
Project:	North Piceance	TVD Reference:	WELL @ 6044.0ft (Original Well Elev)
Reference Site:	O04 696 (3rd)	MD Reference:	WELL @ 6044.0ft (Original Well Elev)
Site Error:	0.0ft	North Reference:	True
Reference Well:	NP MF11A-3 O04 696 (was 12C-3)	Survey Calculation Method:	Minimum Curvature
Well Error:	0.0ft	Output errors are at	2.00 sigma
Reference Wellbore	DD	Database:	EDM 5000.1 US Multi Users DB
Reference Design:	Plan #2	Offset TVD Reference:	Offset Datum

Offset Design													Offset Site Error:	0.0 ft	
Survey Program: 0-MWD													Offset Well Error:		0.0 ft
Reference															
Offset															
Semi Major Axis															
Distance															
Measured Depth (ft)	Vertical Depth (ft)	Measured Depth (ft)	Vertical Depth (ft)	Reference (ft)	Offset (ft)	Highside Toolface (°)	Offset Wellbore Centre +N/-S (ft)	+E/-W (ft)	Between Centres (ft)	Between Ellipses (ft)	Total Uncertainty Axis	Separation Factor	Warning		
0.0	0.0	0.0	0.0	0.0	0.0	-136.80	-61.7	-58.0	84.7						
100.0	100.0	100.0	100.0	0.1	0.1	-136.80	-61.7	-58.0	84.7	84.4	0.27	310.976			
200.0	200.0	200.0	200.0	0.3	0.3	-136.80	-61.7	-58.0	84.7	84.0	0.62	136.270			
300.0	300.0	300.8	300.8	0.5	0.5	-137.23	-62.0	-57.3	84.4	83.5	0.97	86.843			
325.4	325.4	326.5	326.5	0.5	0.5	-177.78	-62.3	-56.6	84.3	83.3	1.07	79.141	CC, ES		
400.0	400.0	402.0	401.9	0.7	0.7	179.29	-64.1	-52.4	85.4	84.1	1.34	63.698			
500.0	499.6	502.5	501.7	0.9	0.9	172.90	-68.2	-42.6	90.8	89.1	1.76	51.735	SF		

Anticollision Report

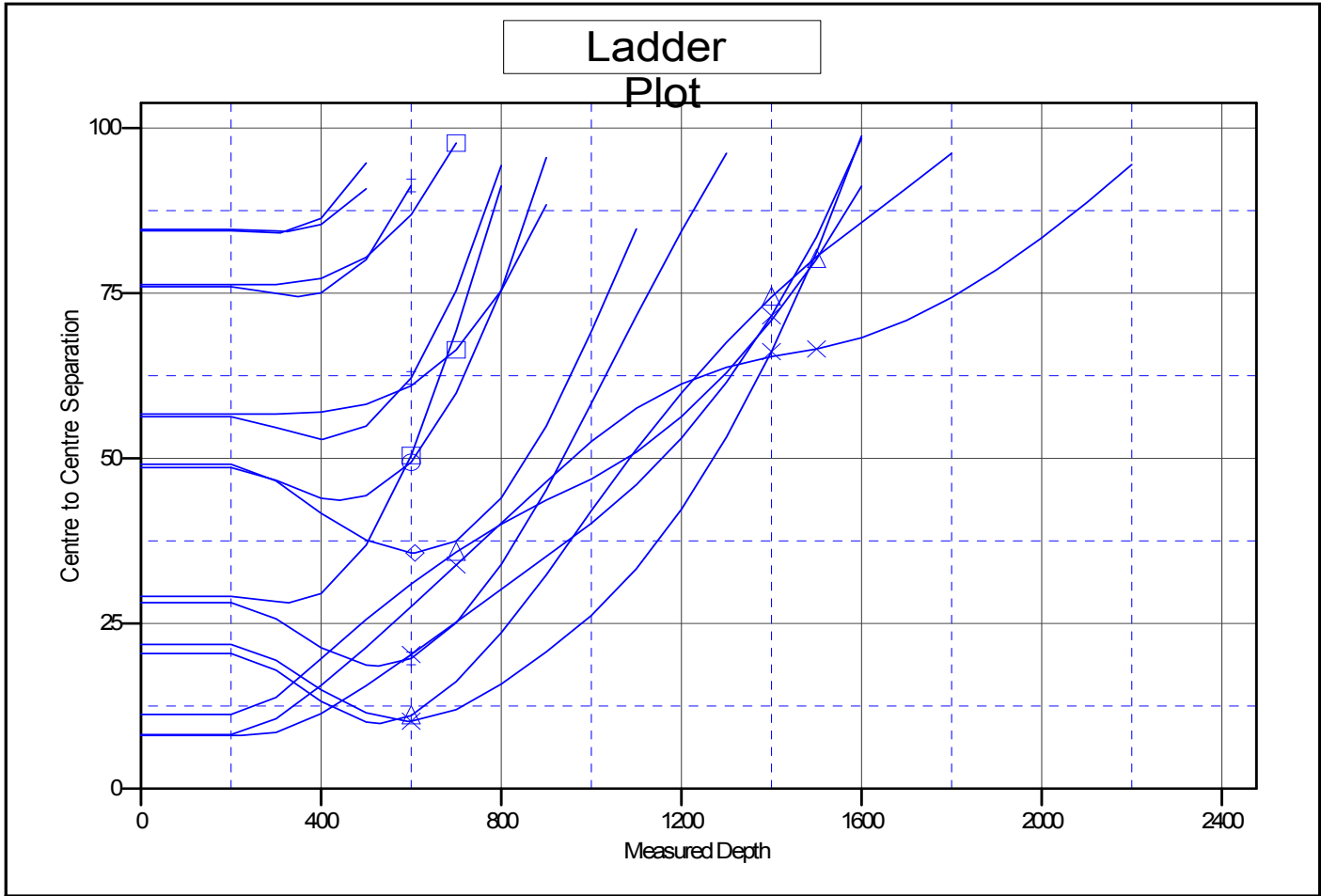
Company:	EnCana Oil & Gas (USA) Inc	Local Co-ordinate Reference:	Well NP MF11A-3 O04 696 (was 12C-3)
Project:	North Piceance	TVD Reference:	WELL @ 6044.0ft (Original Well Elev)
Reference Site:	O04 696 (3rd)	MD Reference:	WELL @ 6044.0ft (Original Well Elev)
Site Error:	0.0ft	North Reference:	True
Reference Well:	NP MF11A-3 O04 696 (was 12C-3)	Survey Calculation Method:	Minimum Curvature
Well Error:	0.0ft	Output errors are at	2.00 sigma
Reference Wellbore	DD	Database:	EDM 5000.1 US Multi Users DB
Reference Design:	Plan #2	Offset TVD Reference:	Offset Datum

Offset Design													Offset Site Error:	0.0 ft	
Survey Program: 0-MWD													Offset Well Error:		0.0 ft
Reference															
Offset															
Semi Major Axis															
Distance															
Measured Depth (ft)	Vertical Depth (ft)	Measured Depth (ft)	Vertical Depth (ft)	Reference (ft)	Offset (ft)	Highside Toolface (°)	Offset Wellbore Centre +N/-S (ft)	+E/-W (ft)	Between Centres (ft)	Between Ellipses (ft)	Total Uncertainty Axis	Separation Factor	Warning		
0.0	0.0	0.0	0.0	0.0	0.0	-142.25	-66.8	-51.7	84.5						
100.0	100.0	100.0	100.0	0.1	0.1	-142.25	-66.8	-51.7	84.5	84.2	0.27	310.171			
200.0	200.0	200.0	200.0	0.3	0.3	-142.25	-66.8	-51.7	84.5	83.8	0.62	135.918			
300.0	300.0	300.5	300.4	0.5	0.5	-144.04	-68.1	-49.4	84.2	83.2	0.98	86.117			
310.0	310.0	310.5	310.4	0.5	0.5	175.59	-68.4	-48.9	84.1	83.1	1.02	82.554	CC, ES		
400.0	400.0	400.4	400.0	0.7	0.7	170.87	-72.1	-42.6	86.3	85.0	1.37	62.822			
500.0	499.6	499.1	497.9	0.9	1.0	163.71	-78.6	-31.5	94.7	92.9	1.83	51.857	SF		

Anticollision Report

Company: EnCana Oil & Gas (USA) Inc	Local Co-ordinate Reference: Well NP MF11A-3 O04 696 (was 12C-3)
Project: North Piceance	TVD Reference: WELL @ 6044.0ft (Original Well Elev)
Reference Site: O04 696 (3rd)	MD Reference: WELL @ 6044.0ft (Original Well Elev)
Site Error: 0.0ft	North Reference: True
Reference Well: NP MF11A-3 O04 696 (was 12C-3)	Survey Calculation Method: Minimum Curvature
Well Error: 0.0ft	Output errors are at 2.00 sigma
Reference Wellbore DD	Database: EDM 5000.1 US Multi Users DB
Reference Design: Plan #2	Offset TVD Reference: Offset Datum

Reference Depths are relative to WELL @ 6044.0ft (Original Well Elev) Coordinates are relative to: NP MF11A-3 O04 696 (was 12C-3)
 Offset Depths are relative to Offset Datum Coordinate System is US State Plane 1983, Colorado Central Zone
 Central Meridian is 105° 30' 0.00 W ° Grid Convergence at Surface is: -1.64°



LEGEND

- NP MF06A-3 O04 696 (was 11C-3), DD, Plan #2 V0 - NP MF11D-3 O04 696 (was 14B-3), DD, Plan #2 V0 - NP MF14D-3 O04 696 (was 19A-3), DD, Plan #2 V0
- NP MF06B-3 O04 696 (was 15A-4), DD, Plan #2 V0 - NP MF11E-3 O04 696 (was 13A-3), DD, Plan #2 V0 - NP MF14E-3 O04 696 (was 19B-3), DD, Plan #2 V0
- NP MF06C-3 O04 696 (was 09C-4), DD, Plan #2 V0 - NP MF11G-3 O04 696 (was 14C-3), DD, Plan #2 V0 - NP MF15A-4 O04 696 (was 11D-3), DD, Plan #2 V0
- NP MF06E-3 O04 696 (was 11B-3), DD, Plan #2 V0 - NP MF14A-3 O04 696 (was 13B-3), DD, Plan #2 V0 - NP MF19A-3 O04 696 (was 17B-4), DD, Plan #2 V0
- NP MF11B-3 O04 696 (was 14A-3), DD, Plan #2 V0 - NP MF14C-3 O04 696 (was 14D-3), DD, Plan #2 V0 - NP MF19C-3 O04 696 (was 20B-3), DD, Plan #2 V0

CC - Min centre to center distance or convergent point, SF - min separation factor, ES - min ellipse separation