

# T2N, R67W

NW. COR.  
SEC. 10, T2N, R67W  
FOUND 2 1/2" ALUM. CAP  
L.S. NO. 28656

NE. COR.  
SEC. 10, T2N, R67W  
FOUND 3 1/4" BRASS CAP  
NUMBER ILLEGIBLE

S 89°43'12" W 2625.07' (M)

S 89°57'01" W 2615.24' (M)

N. 1/4 COR.  
SEC. 10, T2N, R67W  
FOUND 3 1/4" ALUM. CAP  
L.S. NO. 23500

N 00°09'04" W 2626.19' (M)

2004'

**BUTTERBALL  
28C-15HZ**  
SURFACE LOCATION

SURFACE LOCATION  
GROUND ELEVATION= 4934.9'  
NAD 83  
LATITUDE= 40.158137°  
LONGITUDE= -104.878708°

LATITUDE= 40°09'29.293"  
LONGITUDE= -104°52'43.349"

**BOTTOM HOLE LOCATION**

NAD 83  
LATITUDE= 40.132207°  
LONGITUDE= -104.877143°

LATITUDE= 40°07'55.946"  
LONGITUDE= -104°52'37.716"

W. 1/4 COR.  
SEC. 10, T2N, R67W  
FOUND 2" ALUM. CAP  
L.S. NO. 25937

N 89°59'56" W  
2628.03' (C)

N 89°59'56" W  
2609.22' (C)

E. 1/4 COR.  
SEC. 10, T2N, R67W  
FOUND 1952 BLM  
BRASS CAP

**10**

N 00°09'24" W 2626.55' (M)

S 03°03'12" E 9456' GRID  
S 02°39'07" E TRUE  
S 11°41'12" E MAGNETIC

N 00°12'55" W  
2639.08' (C)

N 00°01'43" E 2633.10' (M)

SW. COR.  
SEC. 10, T2N, R67W  
FOUND 2 1/2" ALUM. CAP  
L.S. NO. 14823

N 89°56'11" W 2630.74' (M)

N 89°55'03" W 2598.03' (M)

SE. COR.  
SEC. 10, T2N, R67W  
FOUND 3 1/4" ALUM. CAP  
L.S. NO. 12330

WELL BORE CONTINUES  
INTO SECTION 15

MATCH LINE  
SEE SHEET 2

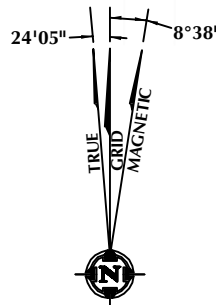
## CERTIFICATE OF SURVEYOR:

THIS IS TO CERTIFY THAT THE ABOVE PLAT WAS PREPARED FROM FIELD NOTES OF ACTUAL SURVEY MADE BY ME OR UNDER MY SUPERVISION AND THAT THE SAME ARE TRUE AND CORRECT TO THE BEST OF MY KNOWLEDGE AND BELIEF. THIS CERTIFICATE DOES NOT REPRESENT A LAND SURVEY PLAT OR IMPROVEMENT SURVEY PLAT AS DEFINED BY C.S. 38-51-102 AND CANNOT BE RELIED UPON TO DETERMINE OWNERSHIP.

*Benjamin J. Reenders*  
PROFESSIONAL LAND SURVEYOR  
COLORADO REGISTRATION NUMBER 48305

BENJAMIN J. REENDERS  
PROFESSIONAL LAND SURVEYOR  
COLORADO REGISTRATION NUMBER 48305

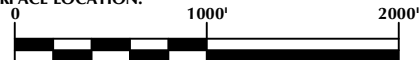
NOTICE:  
ACCORDING TO COLORADO STATE LAW YOU MUST COMMENCE ANY LEGAL ACTION BASED UPON ANY DEFECT IN THIS SURVEY WITHIN THREE YEARS AFTER YOU FIRST DISCOVER SUCH DEFECT. IN NO EVENT MAY ANY ACTION BASED UPON ANY DEFECT IN THIS SURVEY BE COMMENCED MORE THAN TEN YEARS FROM THE DATE ON THE CERTIFICATION SHOWN HEREON.



NOTE:  
MAGNETIC NORTH IS CURRENT AS OF 6/25/2013.  
MAGNETIC NORTH CHANGES WEST 0°08' PER YEAR.

## NOTES:

- ▲ INDICATES FOUND SECTION CORNER
- INDICATES CALCULATED CORNER
- ELEVATION BASED ON NAVD88 (GEOID09)
- BASIS OF BEARING DERIVED FROM COLORADO COORDINATE SYSTEM 1983 NORTH ZONE UNLESS OTHERWISE NOTED.
- ALL MEASURED DISTANCES ARE GRID.  
COMBINED SCALE FACTOR: .99972297
- OPERATOR: ROB WILSON / PDOP = 1.4
- SURFACE USE OF LOCATION IS RANGELAND.
- SEE ADDENDUM TO WELL LOCATION CERTIFICATE FOR EXISTING IMPROVEMENTS WITHIN 400' OF THE WELL PAD.
- WELL FOOTAGES ARE MEASURED AT RIGHT ANGLES TO THE SECTION LINES.
- THE BOTTOM OF HOLE BEARS S03°03'12"E 9456' FROM THE SURFACE LOCATION.



SCALE: 1" = 1000'

## WELL PAD - BUTTERBALL 3N-15HZ

**BUTTERBALL 28C-15HZ**  
**WELL LOCATION CERTIFICATE**  
639' FNL & 2004' FWL NENW (SURFACE)  
LOCATED IN SECTION 10  
460' FSL & 2495' FWL SESW (BOTTOM)  
LOCATED IN SECTION 15  
T2N, R67W, 6TH P.M.  
WELD COUNTY, COLORADO

**Kerr-McGee Oil &  
Gas Onshore L.P.**  
1099 18th Street  
Denver, Colorado 80202



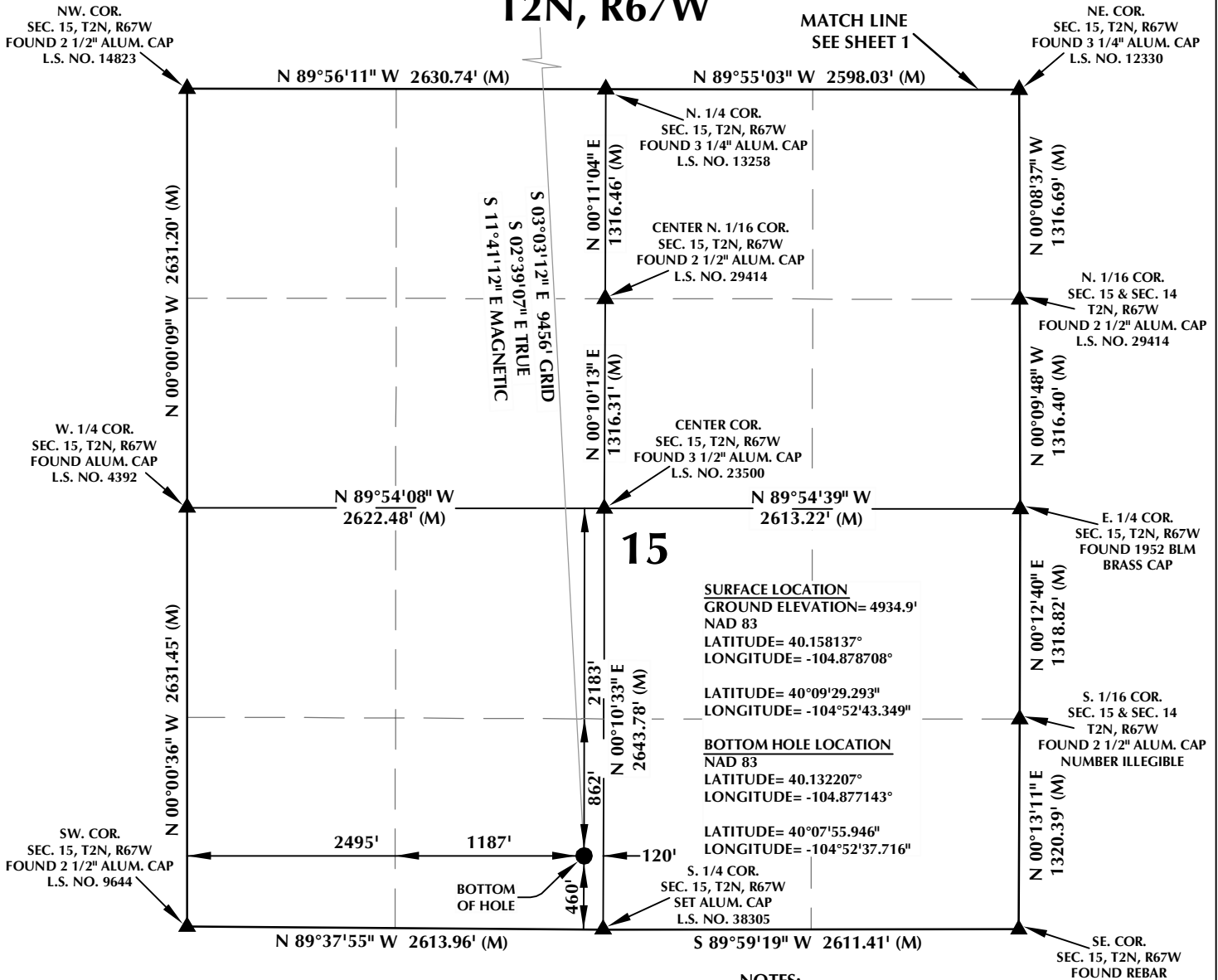
## CONSULTING, LLC

SHERIDAN OFFICE  
2155 North Main Street  
Sheridan, Wyoming 82801  
Phone 307-674-0609

LOVELAND OFFICE  
1635 Foxtrail Drive, Suite 204  
Loveland, Colorado 80538  
Phone 970-776-4331

DRAFTED BY:	APF	CHECKED BY:	BJR	SHEET NO:
DATE DRAFTED:	5/29/13	DATE SURVEYED:	6/24/13	<b>1</b>
REVISED:	6/28/13	FILE NAME:	13-47	1 OF 2

# T2N, R67W



**SURFACE LOCATION**  
GROUND ELEVATION= 4934.9'  
NAD 83  
LATITUDE= 40.158137°  
LONGITUDE= -104.878708°

LATITUDE= 40°09'29.293"  
LONGITUDE= -104°52'43.349"

**BOTTOM HOLE LOCATION**  
NAD 83  
LATITUDE= 40.132207°  
LONGITUDE= -104.877143°

LATITUDE= 40°07'55.946"  
LONGITUDE= -104°52'37.716"

## NOTES:

- ▲ INDICATES FOUND SECTION CORNER
- INDICATES CALCULATED CORNER
- ELEVATION BASED ON NAVD88 (GEOID09)
- BASIS OF BEARING DERIVED FROM COLORADO COORDINATE SYSTEM 1983 NORTH ZONE UNLESS OTHERWISE NOTED.
- ALL MEASURED DISTANCES ARE GRID.  
COMBINED SCALE FACTOR: .99972297
- OPERATOR: ROB WILSON / PDOP = 1.4
- SURFACE USE OF LOCATION IS RANGELAND.
- SEE ADDENDUM TO WELL LOCATION CERTIFICATE FOR EXISTING IMPROVEMENTS WITHIN 400' OF THE WELL PAD.
- WELL FOOTAGES ARE MEASURED AT RIGHT ANGLES TO THE SECTION LINES.
- THE BOTTOM OF HOLE BEARS S03°03'12"E 9456' FROM THE SURFACE LOCATION.



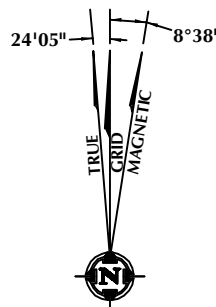
SCALE: 1" = 1000'

## CERTIFICATE OF SURVEYOR:

THIS IS TO CERTIFY THAT THE ABOVE PLAT WAS PREPARED FROM FIELD NOTES OF ACTUAL SURVEY MADE BY ME OR UNDER MY SUPERVISION AND THAT THE SAME ARE TRUE AND CORRECT TO THE BEST OF MY KNOWLEDGE AND BELIEF. THIS CERTIFICATE DOES NOT REPRESENT A LAND SURVEY PLAT OR IMPROVEMENT SURVEY PLAT AS DEFINED BY C.S. 38-513-02 AND CANNOT BE RELIED UPON TO DETERMINE OWNERSHIP.

*Benjamin J. Reenders*  
BENJAMIN J. REENDERS  
PROFESSIONAL LAND SURVEYOR  
COLORADO REGISTRATION NUMBER 48306 6/28/13

**NOTICE:**  
ACCORDING TO COLORADO STATE LAW YOU MUST COMMENCE ANY LEGAL ACTION BASED UPON ANY DEFECT IN THIS SURVEY WITHIN THREE YEARS AFTER YOU FIRST DISCOVER SUCH DEFECT. IN NO EVENT MAY ANY ACTION BASED UPON ANY DEFECT IN THIS SURVEY BE COMMENCED MORE THAN TEN YEARS FROM THE DATE ON THE CERTIFICATION SHOWN HEREON.



**NOTE:**  
MAGNETIC NORTH IS CURRENT AS OF 6/25/2013.  
MAGNETIC NORTH CHANGES WEST 0°08' PER YEAR.

## WELL PAD - BUTTERBALL 3N-15HZ

BUTTERBALL 28C-15HZ  
WELL LOCATION CERTIFICATE  
639' FNL & 2004' FWL NENW (SURFACE)  
LOCATED IN SECTION 10  
460' FSL & 2495' FWL SESW (BOTTOM)  
LOCATED IN SECTION 15  
T2N, R67W, 6TH P.M.  
WELD COUNTY, COLORADO

**Kerr-McGee Oil &  
Gas Onshore L.P.**  
1099 18th Street  
Denver, Colorado 80202



## CONSULTING, LLC

**SHERIDAN OFFICE**  
2155 North Main Street  
Sheridan, Wyoming 82801  
Phone 307-674-0609

**LOVELAND OFFICE**  
1635 Foxtrail Drive, Suite 204  
Loveland, Colorado 80538  
Phone 970-776-4331

DRAFTED BY:	APF	CHECKED BY:	BJR	SHEET NO:
DATE DRAFTED:	5/29/13	DATE SURVEYED:	6/24/13	2
REVISED:	6/28/13	FILE NAME:	13-47	2 OF 2