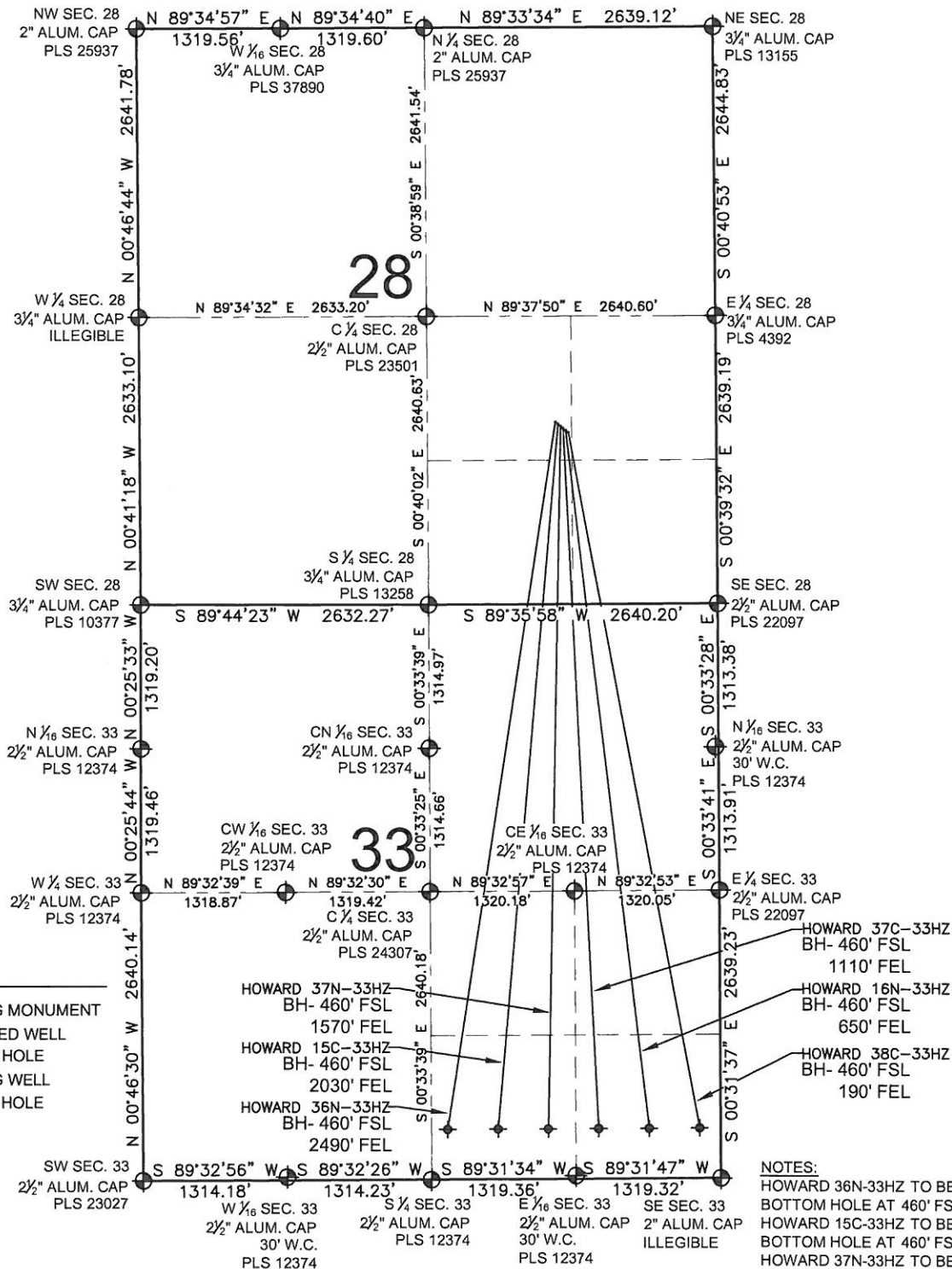


HOWARD 37N-33HZ MULTI-WELL PLAN

SECTION 28, TOWNSHIP 1 NORTH, RANGE 67 WEST, 6TH P.M.



PREPARED BY:



KERR-MCGEE OIL & GAS ONSHORE LP

FIELD DATE:
05-06-13

DRAWING DATE:
06-28-13

SURFACE LOCATION:

NW 1/4 SE 1/4, SEC. 28, T1N, R67W, 6TH P.M.
WELD COUNTY, COLORADO