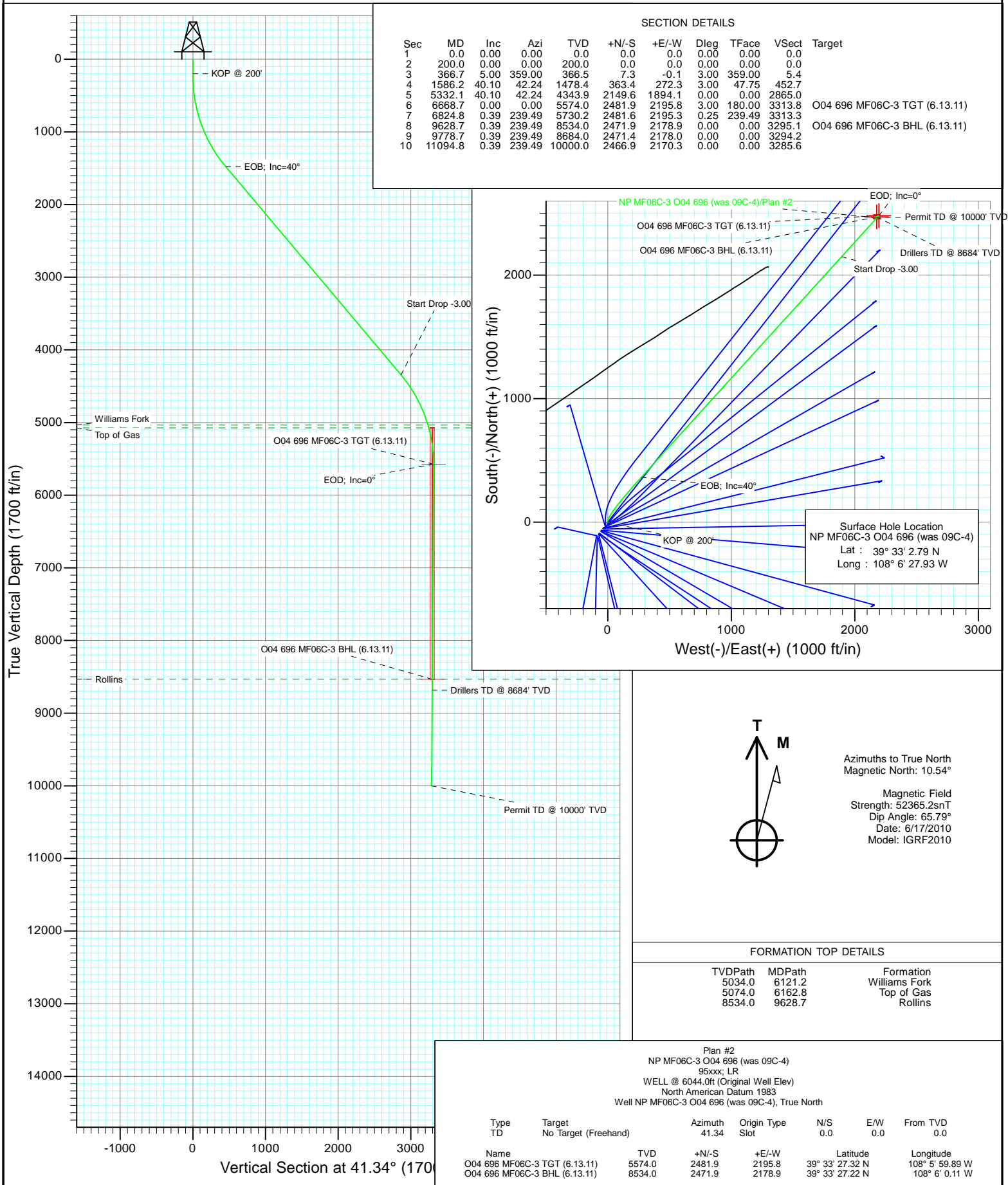




Project: North Piceance
Site: O04 696 (3rd)
Well: NP MF06C-3 O04 696 (was 09C-4)
Wellbore: DD
Design: Plan #2



Planning Report

Database:	USA EDM 5000 US Multi Users DB	Local Co-ordinate Reference:	Well NP MF06C-3 O04 696 (was 09C-4)
Company:	EnCana Oil & Gas (USA) Inc	TVD Reference:	WELL @ 6044.0ft (Original Well Elev)
Project:	North Piceance	MD Reference:	WELL @ 6044.0ft (Original Well Elev)
Site:	O04 696 (3rd)	North Reference:	True
Well:	NP MF06C-3 O04 696 (was 09C-4)	Survey Calculation Method:	Minimum Curvature
Wellbore:	DD		
Design:	Plan #2		

Project	North Piceance		
Map System:	US State Plane 1983	System Datum:	Mean Sea Level
Geo Datum:	North American Datum 1983		
Map Zone:	Colorado Central Zone		

Site	O04 696 (3rd)			
Site Position:		Northing:	1,635,941.08 ft	Latitude: 39° 33' 1.64 N
From:	Lat/Long	Easting:	2,264,673.43 ft	Longitude: 108° 6' 29.09 W
Position Uncertainty:	0.0 ft	Slot Radius:	13.200 in	Grid Convergence: -1.64 °

Well	NP MF06C-3 O04 696 (was 09C-4)			
Well Position	+N/-S	0.0 ft	Northing:	1,636,054.76 ft
	+E/-W	0.0 ft	Easting:	2,264,767.59 ft
Position Uncertainty		0.0 ft	Wellhead Elevation:	ft
			Ground Level:	6,022.0 ft

Wellbore	DD				
Magnetics	Model Name	Sample Date	Declination (°)	Dip Angle (°)	Field Strength (nT)
	IGRF2010	6/17/2010	10.54	65.79	52,365

Design	Plan #2			
Audit Notes:				
Version:	Phase:	PLAN	Tie On Depth:	0.0
Vertical Section:	Depth From (TVD) (ft)	+N/-S (ft)	+E/-W (ft)	Direction (°)
	0.0	0.0	0.0	41.34

Plan Sections										
Measured Depth (ft)	Inclination (°)	Azimuth (°)	Vertical Depth (ft)	+N/-S (ft)	+E/-W (ft)	Dogleg Rate (°/100ft)	Build Rate (°/100ft)	Turn Rate (°/100ft)	TFO (°)	Target
0.0	0.00	0.00	0.0	0.0	0.0	0.00	0.00	0.00	0.00	
200.0	0.00	0.00	200.0	0.0	0.0	0.00	0.00	0.00	0.00	
366.7	5.00	359.00	366.5	7.3	-0.1	3.00	3.00	0.00	359.00	
1,586.2	40.10	42.24	1,478.4	363.4	272.3	3.00	2.88	3.55	47.75	
5,332.1	40.10	42.24	4,343.9	2,149.6	1,894.1	0.00	0.00	0.00	0.00	
6,668.7	0.00	0.00	5,574.0	2,481.9	2,195.8	3.00	-3.00	0.00	180.00	O04 696 MF06C-3 TC
6,824.8	0.39	239.49	5,730.2	2,481.6	2,195.3	0.25	0.25	-77.16	239.49	
9,628.7	0.39	239.49	8,534.0	2,471.9	2,178.9	0.00	0.00	0.00	0.00	O04 696 MF06C-3 Bl
9,778.7	0.39	239.49	8,684.0	2,471.4	2,178.0	0.00	0.00	0.00	0.00	
11,094.8	0.39	239.49	10,000.0	2,466.9	2,170.3	0.00	0.00	0.00	0.00	

Planning Report

Database:	USA EDM 5000 US Multi Users DB	Local Co-ordinate Reference:	Well NP MF06C-3 O04 696 (was 09C-4)
Company:	EnCana Oil & Gas (USA) Inc	TVD Reference:	WELL @ 6044.0ft (Original Well Elev)
Project:	North Piceance	MD Reference:	WELL @ 6044.0ft (Original Well Elev)
Site:	O04 696 (3rd)	North Reference:	True
Well:	NP MF06C-3 O04 696 (was 09C-4)	Survey Calculation Method:	Minimum Curvature
Wellbore:	DD		
Design:	Plan #2		

Planned Survey

Measured Depth (ft)	Inclination (°)	Azimuth (°)	Vertical Depth (ft)	+N/-S (ft)	+E/-W (ft)	Vertical Section (ft)	Dogleg Rate (°/100ft)	Build Rate (°/100ft)	Comments / Formations
0.0	0.00	0.00	0.0	0.0	0.0	0.0	0.00	0.00	
30.0	0.00	0.00	30.0	0.0	0.0	0.0	0.00	0.00	
60.0	0.00	0.00	60.0	0.0	0.0	0.0	0.00	0.00	
90.0	0.00	0.00	90.0	0.0	0.0	0.0	0.00	0.00	
120.0	0.00	0.00	120.0	0.0	0.0	0.0	0.00	0.00	
150.0	0.00	0.00	150.0	0.0	0.0	0.0	0.00	0.00	
180.0	0.00	0.00	180.0	0.0	0.0	0.0	0.00	0.00	
200.0	0.00	0.00	200.0	0.0	0.0	0.0	0.00	0.00	KOP @ 200'
210.0	0.30	359.00	210.0	0.0	0.0	0.0	3.00	3.00	
240.0	1.20	359.00	240.0	0.4	0.0	0.3	3.00	3.00	
270.0	2.10	359.00	270.0	1.3	0.0	0.9	3.00	3.00	
300.0	3.00	359.00	300.0	2.6	0.0	1.9	3.00	3.00	
330.0	3.90	359.00	329.9	4.4	-0.1	3.3	3.00	3.00	
360.0	4.80	359.00	359.8	6.7	-0.1	5.0	3.00	3.00	
366.7	5.00	359.00	366.5	7.3	-0.1	5.4	3.00	3.00	
390.0	5.50	4.42	389.7	9.4	-0.1	7.0	3.00	2.12	
420.0	6.19	10.05	419.5	12.4	0.3	9.5	3.00	2.32	
450.0	6.93	14.52	449.3	15.8	1.1	12.5	3.00	2.47	
480.0	7.71	18.11	479.1	19.4	2.1	16.0	3.00	2.59	
510.0	8.51	21.03	508.8	23.4	3.6	19.9	3.00	2.67	
540.0	9.33	23.46	538.4	27.7	5.3	24.3	3.00	2.73	
570.0	10.16	25.49	568.0	32.3	7.4	29.2	3.00	2.77	
600.0	11.00	27.22	597.5	37.3	9.9	34.5	3.00	2.81	
630.0	11.85	28.70	626.9	42.5	12.7	40.3	3.00	2.84	
660.0	12.71	29.98	656.2	48.1	15.8	46.5	3.00	2.86	
690.0	13.57	31.11	685.4	53.9	19.3	53.2	3.00	2.88	
720.0	14.44	32.10	714.5	60.1	23.1	60.4	3.00	2.89	
750.0	15.31	32.98	743.5	66.6	27.2	68.0	3.00	2.90	
780.0	16.18	33.77	772.4	73.4	31.7	76.1	3.00	2.91	
810.0	17.06	34.48	801.1	80.5	36.5	84.6	3.00	2.92	
840.0	17.94	35.12	829.8	87.9	41.7	93.5	3.00	2.93	
870.0	18.82	35.71	858.2	95.6	47.2	102.9	3.00	2.94	
900.0	19.70	36.24	886.5	103.6	53.0	112.8	3.00	2.94	
930.0	20.59	36.73	914.7	112.0	59.1	123.1	3.00	2.95	
960.0	21.47	37.18	942.7	120.6	65.6	133.8	3.00	2.95	
990.0	22.36	37.60	970.5	129.4	72.4	145.0	3.00	2.95	
1,020.0	23.25	37.99	998.2	138.6	79.5	156.6	3.00	2.96	
1,050.0	24.13	38.35	1,025.7	148.1	87.0	168.6	3.00	2.96	
1,080.0	25.02	38.68	1,053.0	157.9	94.7	181.1	3.00	2.96	
1,110.0	25.91	39.00	1,080.0	167.9	102.8	194.0	3.00	2.97	
1,140.0	26.80	39.29	1,106.9	178.3	111.2	207.3	3.00	2.97	
1,170.0	27.70	39.57	1,133.6	188.9	120.0	221.0	3.00	2.97	
1,200.0	28.59	39.83	1,160.0	199.8	129.0	235.2	3.00	2.97	
1,230.0	29.48	40.07	1,186.3	210.9	138.3	249.7	3.00	2.97	
1,260.0	30.37	40.31	1,212.3	222.3	148.0	264.7	3.00	2.97	
1,290.0	31.26	40.53	1,238.0	234.0	158.0	280.1	3.00	2.98	
1,320.0	32.16	40.74	1,263.6	246.0	168.2	295.8	3.00	2.98	
1,350.0	33.05	40.94	1,288.8	258.2	178.8	312.0	3.00	2.98	
1,380.0	33.94	41.13	1,313.8	270.7	189.7	328.5	3.00	2.98	
1,410.0	34.84	41.31	1,338.6	283.5	200.8	345.5	3.00	2.98	
1,440.0	35.73	41.49	1,363.1	296.5	212.3	362.8	3.00	2.98	
1,470.0	36.63	41.65	1,387.3	309.7	224.0	380.5	3.00	2.98	

Planning Report

Database:	USA EDM 5000 US Multi Users DB	Local Co-ordinate Reference:	Well NP MF06C-3 O04 696 (was 09C-4)
Company:	EnCana Oil & Gas (USA) Inc	TVD Reference:	WELL @ 6044.0ft (Original Well Elev)
Project:	North Piceance	MD Reference:	WELL @ 6044.0ft (Original Well Elev)
Site:	O04 696 (3rd)	North Reference:	True
Well:	NP MF06C-3 O04 696 (was 09C-4)	Survey Calculation Method:	Minimum Curvature
Wellbore:	DD		
Design:	Plan #2		

Planned Survey

Measured Depth (ft)	Inclination (°)	Azimuth (°)	Vertical Depth (ft)	+N/-S (ft)	+E/-W (ft)	Vertical Section (ft)	Dogleg Rate (°/100ft)	Build Rate (°/100ft)	Comments / Formations
1,500.0	37.52	41.81	1,411.2	323.2	236.1	398.6	3.00	2.98	
1,530.0	38.42	41.97	1,434.9	337.0	248.4	417.1	3.00	2.98	
1,560.0	39.31	42.11	1,458.2	350.9	261.0	435.9	3.00	2.98	
1,586.2	40.09	42.24	1,478.4	363.3	272.3	452.6	3.00	2.98	EOB; Inc=40°
1,590.0	40.10	42.24	1,481.3	365.2	273.9	455.1	0.03	0.03	
1,620.0	40.10	42.24	1,504.3	379.5	286.9	474.4	0.00	0.00	
1,650.0	40.10	42.24	1,527.2	393.8	299.9	493.7	0.00	0.00	
1,680.0	40.10	42.24	1,550.2	408.1	312.9	513.0	0.00	0.00	
1,710.0	40.10	42.24	1,573.1	422.4	325.9	532.4	0.00	0.00	
1,740.0	40.10	42.24	1,596.1	436.7	338.8	551.7	0.00	0.00	
1,770.0	40.10	42.24	1,619.0	451.0	351.8	571.0	0.00	0.00	
1,800.0	40.10	42.24	1,642.0	465.3	364.8	590.3	0.00	0.00	
1,830.0	40.10	42.24	1,664.9	479.6	377.8	609.6	0.00	0.00	
1,860.0	40.10	42.24	1,687.9	493.9	390.8	629.0	0.00	0.00	
1,890.0	40.10	42.24	1,710.8	508.2	403.8	648.3	0.00	0.00	
1,920.0	40.10	42.24	1,733.7	522.5	416.8	667.6	0.00	0.00	
1,950.0	40.10	42.24	1,756.7	536.8	429.8	686.9	0.00	0.00	
1,980.0	40.10	42.24	1,779.6	551.1	442.8	706.2	0.00	0.00	
2,010.0	40.10	42.24	1,802.6	565.4	455.7	725.6	0.00	0.00	
2,040.0	40.10	42.24	1,825.5	579.7	468.7	744.9	0.00	0.00	
2,070.0	40.10	42.24	1,848.5	594.0	481.7	764.2	0.00	0.00	
2,100.0	40.10	42.24	1,871.4	608.3	494.7	783.5	0.00	0.00	
2,130.0	40.10	42.24	1,894.4	622.6	507.7	802.8	0.00	0.00	
2,160.0	40.10	42.24	1,917.3	637.0	520.7	822.2	0.00	0.00	
2,190.0	40.10	42.24	1,940.3	651.3	533.7	841.5	0.00	0.00	
2,220.0	40.10	42.24	1,963.2	665.6	546.7	860.8	0.00	0.00	
2,250.0	40.10	42.24	1,986.2	679.9	559.6	880.1	0.00	0.00	
2,280.0	40.10	42.24	2,009.1	694.2	572.6	899.4	0.00	0.00	
2,310.0	40.10	42.24	2,032.1	708.5	585.6	918.8	0.00	0.00	
2,340.0	40.10	42.24	2,055.0	722.8	598.6	938.1	0.00	0.00	
2,370.0	40.10	42.24	2,078.0	737.1	611.6	957.4	0.00	0.00	
2,400.0	40.10	42.24	2,100.9	751.4	624.6	976.7	0.00	0.00	
2,430.0	40.10	42.24	2,123.9	765.7	637.6	996.0	0.00	0.00	
2,460.0	40.10	42.24	2,146.8	780.0	650.6	1,015.3	0.00	0.00	
2,490.0	40.10	42.24	2,169.8	794.3	663.6	1,034.7	0.00	0.00	

Targets

Target Name	Dip Angle (°)	Dip Dir. (°)	TVD (ft)	+N/-S (ft)	+E/-W (ft)	Northing (ft)	Easting (ft)	Latitude	Longitude
- hit/miss target									
- Shape									
O04 696 MF06C-3 BHL	0.00	0.00	8,534.0	2,471.9	2,178.9	1,638,463.14	2,267,016.52	39° 33' 27.22 N	108° 6' 0.11 W
- plan misses target center by 6753.8ft at 2490.0ft MD (2169.8 TVD, 794.3 N, 663.6 E)									
- Rectangle (sides W30.0 H50.0 D0.0)									
O04 696 MF06C-3 TGT	0.00	0.00	5,574.0	2,481.9	2,195.8	1,638,472.62	2,267,033.72	39° 33' 27.32 N	108° 5' 59.89 W
- plan misses target center by 4096.9ft at 2490.0ft MD (2169.8 TVD, 794.3 N, 663.6 E)									
- Point									

Planning Report

Database: USA EDM 5000 US Multi Users DB
Company: EnCana Oil & Gas (USA) Inc
Project: North Piceance
Site: O04 696 (3rd)
Well: NP MF06C-3 O04 696 (was 09C-4)
Wellbore: DD
Design: Plan #2

Local Co-ordinate Reference: Well NP MF06C-3 O04 696 (was 09C-4)
TVD Reference: WELL @ 6044.0ft (Original Well Elev)
MD Reference: WELL @ 6044.0ft (Original Well Elev)
North Reference: True
Survey Calculation Method: Minimum Curvature

Planned Survey

Measured Depth (ft)	Inclination (°)	Azimuth (°)	Vertical Depth (ft)	+N/-S (ft)	+E/-W (ft)	Vertical Section (ft)	Dogleg Rate (°/100ft)	Build Rate (°/100ft)	Comments / Formations
2,500.0	40.10	42.24	2,177.4	799.1	667.9	1,041.1	0.00	0.00	
2,600.0	40.10	42.24	2,253.9	846.8	711.2	1,105.5	0.00	0.00	
2,700.0	40.10	42.24	2,330.4	894.5	754.5	1,169.9	0.00	0.00	
2,800.0	40.10	42.24	2,406.9	942.1	797.8	1,234.3	0.00	0.00	
2,900.0	40.10	42.24	2,483.4	989.8	841.1	1,298.7	0.00	0.00	
3,000.0	40.10	42.24	2,559.9	1,037.5	884.4	1,363.1	0.00	0.00	
3,100.0	40.10	42.24	2,636.4	1,085.2	927.7	1,427.5	0.00	0.00	
3,200.0	40.10	42.24	2,712.9	1,132.9	971.0	1,491.9	0.00	0.00	
3,300.0	40.10	42.24	2,789.4	1,180.6	1,014.2	1,556.3	0.00	0.00	
3,400.0	40.10	42.24	2,865.9	1,228.2	1,057.5	1,620.7	0.00	0.00	
3,500.0	40.10	42.24	2,942.4	1,275.9	1,100.8	1,685.1	0.00	0.00	
3,600.0	40.10	42.24	3,018.9	1,323.6	1,144.1	1,749.5	0.00	0.00	
3,700.0	40.10	42.24	3,095.4	1,371.3	1,187.4	1,813.9	0.00	0.00	
3,800.0	40.10	42.24	3,171.9	1,419.0	1,230.7	1,878.3	0.00	0.00	
3,900.0	40.10	42.24	3,248.4	1,466.7	1,274.0	1,942.7	0.00	0.00	
4,000.0	40.10	42.24	3,324.9	1,514.3	1,317.3	2,007.1	0.00	0.00	
4,100.0	40.10	42.24	3,401.4	1,562.0	1,360.6	2,071.5	0.00	0.00	
4,200.0	40.10	42.24	3,477.9	1,609.7	1,403.9	2,135.9	0.00	0.00	
4,300.0	40.10	42.24	3,554.4	1,657.4	1,447.2	2,200.3	0.00	0.00	
4,400.0	40.10	42.24	3,630.9	1,705.1	1,490.5	2,264.7	0.00	0.00	
4,500.0	40.10	42.24	3,707.4	1,752.8	1,533.8	2,329.1	0.00	0.00	
4,600.0	40.10	42.24	3,783.9	1,800.5	1,577.1	2,393.5	0.00	0.00	
4,700.0	40.10	42.24	3,860.4	1,848.1	1,620.4	2,457.9	0.00	0.00	
4,800.0	40.10	42.24	3,936.9	1,895.8	1,663.7	2,522.3	0.00	0.00	
4,900.0	40.10	42.24	4,013.3	1,943.5	1,707.0	2,586.7	0.00	0.00	
5,000.0	40.10	42.24	4,089.8	1,991.2	1,750.3	2,651.1	0.00	0.00	
5,100.0	40.10	42.24	4,166.3	2,038.9	1,793.6	2,715.5	0.00	0.00	
5,200.0	40.10	42.24	4,242.8	2,086.6	1,836.9	2,779.9	0.00	0.00	
5,300.0	40.10	42.24	4,319.3	2,134.2	1,880.1	2,844.3	0.00	0.00	
5,332.1	40.10	42.24	4,343.9	2,149.6	1,894.0	2,865.0	0.00	0.00	Start Drop -3.00
5,400.0	38.06	42.24	4,396.6	2,181.2	1,922.8	2,907.8	3.00	-3.00	
5,500.0	35.06	42.24	4,476.9	2,225.3	1,962.9	2,967.3	3.00	-3.00	
5,600.0	32.06	42.24	4,560.2	2,266.3	2,000.0	3,022.6	3.00	-3.00	
5,700.0	29.06	42.24	4,646.3	2,303.9	2,034.2	3,073.4	3.00	-3.00	
5,800.0	26.06	42.24	4,735.0	2,338.1	2,065.3	3,119.7	3.00	-3.00	
5,900.0	23.06	42.24	4,825.9	2,368.9	2,093.2	3,161.2	3.00	-3.00	
6,000.0	20.06	42.24	4,918.9	2,396.1	2,117.9	3,198.0	3.00	-3.00	
6,100.0	17.06	42.24	5,013.7	2,419.7	2,139.3	3,229.8	3.00	-3.00	
6,121.2	16.42	42.24	5,034.0	2,424.2	2,143.4	3,235.9	3.00	-3.00	Williams Fork
6,162.8	15.18	42.24	5,074.0	2,432.6	2,151.0	3,247.2	3.00	-3.00	Top of Gas
6,200.0	14.06	42.24	5,110.0	2,439.5	2,157.3	3,256.6	3.00	-3.00	
6,300.0	11.06	42.24	5,207.6	2,455.6	2,172.0	3,278.3	3.00	-3.00	
6,400.0	8.06	42.24	5,306.2	2,467.9	2,183.1	3,294.9	3.00	-3.00	
6,500.0	5.06	42.24	5,405.6	2,476.4	2,190.8	3,306.4	3.00	-3.00	
6,600.0	2.06	42.24	5,505.3	2,481.0	2,195.0	3,312.6	3.00	-3.00	
6,668.7	0.00	42.24	5,574.0	2,481.9	2,195.8	3,313.8	3.00	-3.00	EOD; Inc=0° - O04 696 MF06C-3 TGT (6.13.11)
6,700.0	0.08	239.49	5,605.3	2,481.9	2,195.8	3,313.8	0.25	0.25	
6,800.0	0.33	239.49	5,705.3	2,481.7	2,195.5	3,313.4	0.25	0.25	
6,824.8	0.39	239.49	5,730.2	2,481.6	2,195.3	3,313.3	0.25	0.25	
6,900.0	0.39	239.49	5,805.3	2,481.4	2,194.9	3,312.8	0.00	0.00	
7,000.0	0.39	239.49	5,905.3	2,481.0	2,194.3	3,312.2	0.00	0.00	
7,100.0	0.39	239.49	6,005.3	2,480.7	2,193.7	3,311.5	0.00	0.00	

Planning Report

Database:	USA EDM 5000 US Multi Users DB	Local Co-ordinate Reference:	Well NP MF06C-3 O04 696 (was 09C-4)
Company:	EnCana Oil & Gas (USA) Inc	TVD Reference:	WELL @ 6044.0ft (Original Well Elev)
Project:	North Piceance	MD Reference:	WELL @ 6044.0ft (Original Well Elev)
Site:	O04 696 (3rd)	North Reference:	True
Well:	NP MF06C-3 O04 696 (was 09C-4)	Survey Calculation Method:	Minimum Curvature
Wellbore:	DD		
Design:	Plan #2		

Planned Survey									
Measured Depth (ft)	Inclination (°)	Azimuth (°)	Vertical Depth (ft)	+N/-S (ft)	+E/-W (ft)	Vertical Section (ft)	Dogleg Rate (°/100ft)	Build Rate (°/100ft)	Comments / Formations
7,200.0	0.39	239.49	6,105.3	2,480.3	2,193.1	3,310.9	0.00	0.00	
7,300.0	0.39	239.49	6,205.3	2,480.0	2,192.6	3,310.2	0.00	0.00	
7,400.0	0.39	239.49	6,305.3	2,479.6	2,192.0	3,309.6	0.00	0.00	
7,500.0	0.39	239.49	6,405.3	2,479.3	2,191.4	3,308.9	0.00	0.00	
7,600.0	0.39	239.49	6,505.3	2,478.9	2,190.8	3,308.3	0.00	0.00	
7,700.0	0.39	239.49	6,605.3	2,478.6	2,190.2	3,307.6	0.00	0.00	
7,800.0	0.39	239.49	6,705.3	2,478.3	2,189.6	3,307.0	0.00	0.00	
7,900.0	0.39	239.49	6,805.3	2,477.9	2,189.0	3,306.3	0.00	0.00	
8,000.0	0.39	239.49	6,905.3	2,477.6	2,188.4	3,305.7	0.00	0.00	
8,100.0	0.39	239.49	7,005.3	2,477.2	2,187.9	3,305.0	0.00	0.00	
8,200.0	0.39	239.49	7,105.3	2,476.9	2,187.3	3,304.4	0.00	0.00	
8,300.0	0.39	239.49	7,205.3	2,476.5	2,186.7	3,303.7	0.00	0.00	
8,400.0	0.39	239.49	7,305.3	2,476.2	2,186.1	3,303.1	0.00	0.00	
8,500.0	0.39	239.49	7,405.3	2,475.8	2,185.5	3,302.4	0.00	0.00	
8,600.0	0.39	239.49	7,505.3	2,475.5	2,184.9	3,301.8	0.00	0.00	
8,700.0	0.39	239.49	7,605.3	2,475.1	2,184.3	3,301.2	0.00	0.00	
8,800.0	0.39	239.49	7,705.3	2,474.8	2,183.7	3,300.5	0.00	0.00	
8,900.0	0.39	239.49	7,805.3	2,474.5	2,183.2	3,299.9	0.00	0.00	
9,000.0	0.39	239.49	7,905.3	2,474.1	2,182.6	3,299.2	0.00	0.00	
9,100.0	0.39	239.49	8,005.3	2,473.8	2,182.0	3,298.6	0.00	0.00	
9,200.0	0.39	239.49	8,105.3	2,473.4	2,181.4	3,297.9	0.00	0.00	
9,300.0	0.39	239.49	8,205.3	2,473.1	2,180.8	3,297.3	0.00	0.00	
9,400.0	0.39	239.49	8,305.3	2,472.7	2,180.2	3,296.6	0.00	0.00	
9,500.0	0.39	239.49	8,405.3	2,472.4	2,179.6	3,296.0	0.00	0.00	
9,600.0	0.39	239.49	8,505.3	2,472.0	2,179.0	3,295.3	0.00	0.00	
9,628.7	0.39	239.49	8,534.0	2,471.9	2,178.9	3,295.1	0.00	0.00	Rollins - O04 696 MF06C-3 BHL (6.13.11)
9,700.0	0.39	239.49	8,605.3	2,471.7	2,178.5	3,294.7	0.00	0.00	
9,778.7	0.39	239.49	8,684.0	2,471.4	2,178.0	3,294.2	0.00	0.00	Drillers TD @ 8684' TVD
9,800.0	0.39	239.49	8,705.3	2,471.3	2,177.9	3,294.0	0.00	0.00	
9,900.0	0.39	239.49	8,805.3	2,471.0	2,177.3	3,293.4	0.00	0.00	
10,000.0	0.39	239.49	8,905.3	2,470.6	2,176.7	3,292.7	0.00	0.00	
10,100.0	0.39	239.49	9,005.3	2,470.3	2,176.1	3,292.1	0.00	0.00	
10,200.0	0.39	239.49	9,105.3	2,470.0	2,175.5	3,291.4	0.00	0.00	
10,300.0	0.39	239.49	9,205.3	2,469.6	2,174.9	3,290.8	0.00	0.00	
10,400.0	0.39	239.49	9,305.3	2,469.3	2,174.4	3,290.1	0.00	0.00	
10,500.0	0.39	239.49	9,405.2	2,468.9	2,173.8	3,289.5	0.00	0.00	
10,600.0	0.39	239.49	9,505.2	2,468.6	2,173.2	3,288.8	0.00	0.00	
10,700.0	0.39	239.49	9,605.2	2,468.2	2,172.6	3,288.2	0.00	0.00	
10,800.0	0.39	239.49	9,705.2	2,467.9	2,172.0	3,287.6	0.00	0.00	
10,900.0	0.39	239.49	9,805.2	2,467.5	2,171.4	3,286.9	0.00	0.00	
11,000.0	0.39	239.49	9,905.2	2,467.2	2,170.8	3,286.3	0.00	0.00	
11,094.8	0.39	239.49	10,000.0	2,466.9	2,170.3	3,285.6	0.00	0.00	Permit TD @ 10000' TVD

Planning Report

Database:	USA EDM 5000 US Multi Users DB	Local Co-ordinate Reference:	Well NP MF06C-3 O04 696 (was 09C-4)
Company:	EnCana Oil & Gas (USA) Inc	TVD Reference:	WELL @ 6044.0ft (Original Well Elev)
Project:	North Piceance	MD Reference:	WELL @ 6044.0ft (Original Well Elev)
Site:	O04 696 (3rd)	North Reference:	True
Well:	NP MF06C-3 O04 696 (was 09C-4)	Survey Calculation Method:	Minimum Curvature
Wellbore:	DD		
Design:	Plan #2		

Targets									
Target Name	Dip Angle	Dip Dir.	TVD	+N/-S	+E/-W	Northing	Easting	Latitude	Longitude
- hit/miss target	(°)	(°)	(ft)	(ft)	(ft)	(ft)	(ft)		
- Shape									
O04 696 MF06C-3 BHL	0.00	0.00	8,534.0	2,471.9	2,178.9	1,638,463.14	2,267,016.52	39° 33' 27.22 N	108° 6' 0.11 W
- plan hits target center									
- Rectangle (sides W30.0 H50.0 D0.0)									
O04 696 MF06C-3 TGT	0.00	0.00	5,574.0	2,481.9	2,195.8	1,638,472.62	2,267,033.72	39° 33' 27.32 N	108° 5' 59.89 W
- plan hits target center									
- Point									

Formations					
Measured Depth	Vertical Depth	Name	Lithology	Dip	Dip Direction
(ft)	(ft)			(°)	(°)
6,121.2	5,034.0	Williams Fork		0.00	
6,162.8	5,074.0	Top of Gas		0.00	
9,628.7	8,534.0	Rollins		0.00	

Plan Annotations				
Measured Depth	Vertical Depth	Local Coordinates		Comment
(ft)	(ft)	+N/-S (ft)	+E/-W (ft)	
200.0	200.0	0.0	0.0	KOP @ 200'
1,586.2	1,478.4	7.3	-0.1	EOB; Inc=40°
5,332.1	4,343.9	363.4	272.3	Start Drop -3.00
6,668.7	5,574.0	2,149.6	1,894.1	EOD; Inc=0°
9,778.7	8,684.0	2,481.9	2,195.8	Drillers TD @ 8684' TVD
11,094.8	10,000.0	2,481.6	2,195.3	Permit TD @ 10000' TVD

EnCana Oil & Gas (USA) Inc

North Piceance

O04 696 (3rd)

NP MF06C-3 O04 696 (was 09C-4)

DD

Plan #2

Anticollision Report

14 June, 2011

Anticollision Report

Company:	EnCana Oil & Gas (USA) Inc	Local Co-ordinate Reference:	Well NP MF06C-3 O04 696 (was 09C-4)
Project:	North Piceance	TVD Reference:	WELL @ 6044.0ft (Original Well Elev)
Reference Site:	O04 696 (3rd)	MD Reference:	WELL @ 6044.0ft (Original Well Elev)
Site Error:	0.0ft	North Reference:	True
Reference Well:	NP MF06C-3 O04 696 (was 09C-4)	Survey Calculation Method:	Minimum Curvature
Well Error:	0.0ft	Output errors are at	2.00 sigma
Reference Wellbore	DD	Database:	EDM 5000.1 US Multi Users DB
Reference Design:	Plan #2	Offset TVD Reference:	Offset Datum

Reference	Plan #2		
Filter type:	NO GLOBAL FILTER: Using user defined selection & filtering criteria		
Interpolation Method:	MD Interval 100.0ft	Error Model:	Systematic Ellipse
Depth Range:	Unlimited	Scan Method:	Closest Approach 3D
Results Limited by:	Maximum center-center distance of 100.0ft	Error Surface:	Elliptical Conic
Warning Levels Evaluated at:	2.00 Sigma		

Survey Tool Program		Date	6/14/2011		
From (ft)	To (ft)	Survey (Wellbore)	Tool Name	Description	
0.0	11,094.8	Plan #2 (DD)	MWD	Geolink MWD	

Anticollision Report

Company:	EnCana Oil & Gas (USA) Inc	Local Co-ordinate Reference:	Well NP MF06C-3 O04 696 (was 09C-4)
Project:	North Piceance	TVD Reference:	WELL @ 6044.0ft (Original Well Elev)
Reference Site:	O04 696 (3rd)	MD Reference:	WELL @ 6044.0ft (Original Well Elev)
Site Error:	0.0ft	North Reference:	True
Reference Well:	NP MF06C-3 O04 696 (was 09C-4)	Survey Calculation Method:	Minimum Curvature
Well Error:	0.0ft	Output errors are at	2.00 sigma
Reference Wellbore	DD	Database:	EDM 5000.1 US Multi Users DB
Reference Design:	Plan #2	Offset TVD Reference:	Offset Datum

Summary

Site Name	Reference Measured Depth (ft)	Offset Measured Depth (ft)	Distance Between Centres (ft)	Between Ellipses (ft)	Separation Factor	Warning
Offset Well - Wellbore - Design						
C04 696 (NENW Sec4-T6S-R96W)						
N. Parachute C04 MF04D - DD - DD						Out of range
N. Parachute C04 MF04D - DD - Plan #2						Out of range
N. Parachute C04 MF04D - DD - Plan #3						Out of range
N. Parachute C04 MF08A - DD - DD						Out of range
N. Parachute C04 MF08A - DD - Plan #2						Out of range
N. Parachute C04 MF08A - DD - Plan #3						Out of range
N. Parachute C04 MF08A - DD - Plan #5						Out of range
D31 595 (Lot 3 S31-T5S-R95W)						
NP EF11C D31 595 - DD - Plan #1						Out of range
NP EF11C D31 595 - DD - Plan #2						Out of range
NP EF11C D31 595 (was 14C) OLD Abandon - DD - Pla						Out of range
NP EF11C D31 595 (was 14C) OLD Abandon - DD - Pla						Out of range
N04 696 Pad (NESW Sec4-T6S-R96W)						
NP MF09A N04 696 - DD - DD						Out of range
NP MF09A N04 696 - DD - Plan #3						Out of range
NP MF09A N04 696 - DD - Plan #4						Out of range
O04 696 (3rd)						
NP MF01D-9 O04 696 (was 17C-4) - DD - Plan #2						Out of range
NP MF02A-9 O04 696 (was 18C-4) - DD - Plan #2						Out of range
NP MF06A-3 O04 696 (was 11C-3) - DD - Plan #2	400.0	402.4	28.0	26.6	20.571	CC, ES
NP MF06A-3 O04 696 (was 11C-3) - DD - Plan #2	1,200.0	1,214.5	95.0	85.4	9.853	SF
NP MF06B-3 O04 696 (was 15A-4) - DD - Plan #2	319.4	319.8	7.2	6.2	6.943	CC, ES
NP MF06B-3 O04 696 (was 15A-4) - DD - Plan #2	1,400.0	1,397.1	24.7	13.7	2.253	SF
NP MF06E-3 O04 696 (was 11B-3) - DD - Plan #2	200.0	200.0	8.7	8.1	13.969	CC, ES
NP MF06E-3 O04 696 (was 11B-3) - DD - Plan #2	1,500.0	1,492.7	98.8	82.5	6.042	SF
NP MF08B-9 O04 696 (was 01B-9) - DD - Plan #2						Out of range
NP MF11A-3 O04 696 (was 12C-3) - DD - Plan #2	200.0	200.0	11.2	10.6	18.089	CC, ES
NP MF11A-3 O04 696 (was 12C-3) - DD - Plan #2	1,600.0	1,608.3	92.9	77.7	6.108	SF
NP MF11B-3 O04 696 (was 14A-3) - DD - Plan #2	200.0	200.0	29.4	28.8	47.377	CC
NP MF11B-3 O04 696 (was 14A-3) - DD - Plan #2	300.0	301.3	29.7	28.7	30.417	ES
NP MF11B-3 O04 696 (was 14A-3) - DD - Plan #2	1,200.0	1,200.3	99.8	89.4	9.579	SF
NP MF11D-3 O04 696 (was 14B-3) - DD - Plan #2	200.0	200.0	36.9	36.3	59.358	CC
NP MF11D-3 O04 696 (was 14B-3) - DD - Plan #2	300.0	301.5	37.2	36.2	38.008	ES
NP MF11D-3 O04 696 (was 14B-3) - DD - Plan #2	1,000.0	1,001.0	99.0	92.1	14.278	SF
NP MF11E-3 O04 696 (was 13A-3) - DD - Plan #2	344.8	348.4	55.9	54.8	48.646	CC, ES
NP MF11E-3 O04 696 (was 13A-3) - DD - Plan #2	900.0	907.3	98.5	93.2	18.591	SF
NP MF11G-3 O04 696 (was 14C-3) - DD - Plan #2	200.0	200.0	64.0	63.4	102.968	CC, ES
NP MF11G-3 O04 696 (was 14C-3) - DD - Plan #2	700.0	707.0	98.1	95.4	36.900	SF
NP MF14A-3 O04 696 (was 13B-3) - DD - Plan #2	200.0	200.0	57.0	56.4	91.796	CC, ES
NP MF14A-3 O04 696 (was 13B-3) - DD - Plan #2	700.0	701.0	95.8	92.7	30.380	SF
NP MF14C-3 O04 696 (was 14D-3) - DD - Plan #2	200.0	200.0	64.6	64.0	104.043	CC, ES
NP MF14C-3 O04 696 (was 14D-3) - DD - Plan #2	600.0	601.0	92.2	89.8	38.590	SF
NP MF14D-3 O04 696 (was 19A-3) - DD - Plan #2	200.0	200.0	83.7	83.0	134.634	CC, ES
NP MF14D-3 O04 696 (was 19A-3) - DD - Plan #2	500.0	503.2	99.1	97.4	57.707	SF
NP MF14E-3 O04 696 (was 19B-3) - DD - Plan #2	200.0	200.0	84.1	83.5	135.424	CC, ES
NP MF14E-3 O04 696 (was 19B-3) - DD - Plan #2	400.0	401.3	91.1	89.7	65.981	SF
NP MF15A-4 O04 696 (was 11D-3) - DD - Plan #2	200.0	200.0	35.8	35.2	57.662	CC, ES
NP MF15A-4 O04 696 (was 11D-3) - DD - Plan #2	700.0	701.8	64.4	61.1	19.810	SF
NP MF15D-4 O04 696 (was 01B-9) - DD - Plan #2						Out of range
NP MF18B-4 O04 696 (was 01A-9) - DD - Plan #2						Out of range
NP MF19A-3 O04 696 (was 17B-4) - DD - Plan #2	200.0	200.0	92.1	91.5	148.274	CC, ES

CC - Min centre to center distance or convergent point, SF - min separation factor, ES - min ellipse separation

Anticollision Report

Company:	EnCana Oil & Gas (USA) Inc	Local Co-ordinate Reference:	Well NP MF06C-3 O04 696 (was 09C-4)
Project:	North Piceance	TVD Reference:	WELL @ 6044.0ft (Original Well Elev)
Reference Site:	O04 696 (3rd)	MD Reference:	WELL @ 6044.0ft (Original Well Elev)
Site Error:	0.0ft	North Reference:	True
Reference Well:	NP MF06C-3 O04 696 (was 09C-4)	Survey Calculation Method:	Minimum Curvature
Well Error:	0.0ft	Output errors are at	2.00 sigma
Reference Wellbore	DD	Database:	EDM 5000.1 US Multi Users DB
Reference Design:	Plan #2	Offset TVD Reference:	Offset Datum

Summary						
Site Name	Reference Measured Depth (ft)	Offset Measured Depth (ft)	Distance Between Centres (ft)	Distance Between Ellipses (ft)	Separation Factor	Warning
Offset Well - Wellbore - Design						
O04 696 (3rd)						
NP MF19A-3 O04 696 (was 17B-4) - DD - Plan #2	400.0	400.9	99.6	98.2	73.789	SF
NP MF19C-3 O04 696 (was 20B-3) - DD - Plan #2	200.0	200.0	92.6	92.0	149.103	CC, ES
NP MF19C-3 O04 696 (was 20B-3) - DD - Plan #2	300.0	300.0	94.8	93.8	96.668	SF
NP MF19D-3 O04 696 (was 19C-3) - DD - Plan #2						Out of range
NP MF19E-3 O04 696 (was 19D-3) - DD - Plan #2						Out of range
NP MF20F-3 O04 696 (was 20D-3) - DD - Plan #2						Out of range

Anticollision Report

Company:	EnCana Oil & Gas (USA) Inc	Local Co-ordinate Reference:	Well NP MF06C-3 O04 696 (was 09C-4)
Project:	North Piceance	TVD Reference:	WELL @ 6044.0ft (Original Well Elev)
Reference Site:	O04 696 (3rd)	MD Reference:	WELL @ 6044.0ft (Original Well Elev)
Site Error:	0.0ft	North Reference:	True
Reference Well:	NP MF06C-3 O04 696 (was 09C-4)	Survey Calculation Method:	Minimum Curvature
Well Error:	0.0ft	Output errors are at	2.00 sigma
Reference Wellbore	DD	Database:	EDM 5000.1 US Multi Users DB
Reference Design:	Plan #2	Offset TVD Reference:	Offset Datum

Offset Design O04 696 (3rd) - NP MF06A-3 O04 696 (was 11C-3) - DD - Plan #2												Offset Site Error: 0.0 ft	
Survey Program: 0-MWD												Offset Well Error: 0.0 ft	
Reference		Offset		Semi Major Axis			Distance						Warning
Measured Depth (ft)	Vertical Depth (ft)	Measured Depth (ft)	Vertical Depth (ft)	Reference (ft)	Offset (ft)	Highside Toolface (°)	Offset Wellbore Centre +N/-S (ft)	+E/-W (ft)	Between Centres (ft)	Between Ellipses (ft)	Total Uncertainty Axis	Separation Factor	
0.0	0.0	0.0	0.0	0.0	0.0	-142.26	-22.3	-17.2	28.2				
100.0	100.0	100.0	100.0	0.1	0.1	-142.26	-22.3	-17.2	28.2	27.9	0.27	103.403	
200.0	200.0	200.0	200.0	0.3	0.3	-142.26	-22.3	-17.2	28.2	27.5	0.62	45.311	
300.0	300.0	301.2	301.1	0.5	0.5	-141.30	-19.6	-17.2	28.1	27.1	0.98	28.709	
381.7	381.5	383.9	383.6	0.7	0.7	-147.09	-13.4	-17.2	28.1	26.8	1.29	21.754	
400.0	399.6	402.4	402.0	0.7	0.7	-148.35	-11.6	-17.2	28.0	26.6	1.36	20.571	CC, ES
500.0	498.9	503.4	502.1	1.0	1.0	-155.25	1.8	-17.2	28.9	27.1	1.80	16.010	
600.0	597.5	604.1	601.1	1.3	1.4	-149.36	20.3	-17.2	32.2	29.8	2.41	13.337	
700.0	695.1	704.3	698.5	1.7	1.8	-139.08	43.9	-17.2	39.7	36.5	3.27	12.167	
800.0	791.6	805.5	795.7	2.2	2.3	-131.20	71.9	-15.0	50.4	46.1	4.27	11.794	
900.0	886.5	907.2	892.2	2.8	2.9	-126.55	103.1	-8.5	61.7	56.3	5.40	11.425	
1,000.0	979.8	1,009.2	987.6	3.5	3.6	-123.63	137.6	2.2	73.1	66.4	6.67	10.963	
1,100.0	1,071.0	1,111.7	1,081.7	4.2	4.3	-121.70	175.3	17.2	84.2	76.2	8.08	10.427	
1,200.0	1,160.0	1,214.5	1,174.1	5.1	5.1	-120.38	216.1	36.5	95.0	85.4	9.64	9.853	SF

Anticollision Report

Company:	EnCana Oil & Gas (USA) Inc	Local Co-ordinate Reference:	Well NP MF06C-3 004 696 (was 09C-4)
Project:	North Piceance	TVD Reference:	WELL @ 6044.0ft (Original Well Elev)
Reference Site:	004 696 (3rd)	MD Reference:	WELL @ 6044.0ft (Original Well Elev)
Site Error:	0.0ft	North Reference:	True
Reference Well:	NP MF06C-3 004 696 (was 09C-4)	Survey Calculation Method:	Minimum Curvature
Well Error:	0.0ft	Output errors are at	2.00 sigma
Reference Wellbore	DD	Database:	EDM 5000.1 US Multi Users DB
Reference Design:	Plan #2	Offset TVD Reference:	Offset Datum

Offset Design													Offset Site Error:	0.0 ft
Survey Program: 0-MWD													Offset Well Error:	0.0 ft
Reference														
Offset				Semi Major Axis				Distance						
Measured Depth (ft)	Vertical Depth (ft)	Measured Depth (ft)	Vertical Depth (ft)	Reference (ft)	Offset (ft)	Highside Toolface (°)	Offset Wellbore Centre +N/-S (ft)	+E/-W (ft)	Between Centres (ft)	Between Ellipses (ft)	Total Uncertainty Axis	Separation Factor	Warning	
0.0	0.0	0.0	0.0	0.0	0.0	-142.25	-6.1	-4.7	7.7					
100.0	100.0	100.0	100.0	0.1	0.1	-142.25	-6.1	-4.7	7.7	7.4	0.27	28.197		
200.0	200.0	200.0	200.0	0.3	0.3	-142.25	-6.1	-4.7	7.7	7.1	0.62	12.356		
300.0	300.0	300.4	300.3	0.5	0.5	-154.46	-4.0	-3.1	7.3	6.3	0.97	7.488		
319.4	319.3	319.8	319.8	0.5	0.5	-162.50	-3.1	-2.4	7.2	6.2	1.04	6.943 CC, ES		
400.0	399.6	400.6	400.2	0.7	0.7	161.38	2.2	1.8	8.4	7.0	1.35	6.187		
500.0	498.9	500.7	499.4	1.0	1.0	124.33	12.5	9.9	11.8	9.9	1.89	6.209		
600.0	597.5	600.7	597.7	1.3	1.4	105.38	26.9	21.2	15.4	12.7	2.61	5.877		
700.0	695.1	700.6	694.9	1.7	1.8	93.70	45.2	35.6	18.5	15.0	3.50	5.301		
800.0	791.6	800.5	790.6	2.2	2.4	85.25	67.5	53.1	21.1	16.6	4.53	4.662		
900.0	886.5	900.2	884.6	2.8	3.0	78.32	93.7	73.7	23.1	17.4	5.70	4.053		
1,000.0	979.8	1,000.0	976.8	3.5	3.7	72.00	123.8	97.3	24.4	17.5	6.95	3.510		
1,100.0	1,071.0	1,099.3	1,066.5	4.2	4.5	65.74	157.4	123.7	25.1	16.9	8.24	3.049		
1,200.0	1,160.0	1,198.7	1,153.8	5.1	5.4	59.07	194.6	153.0	25.3	15.9	9.46	2.677		
1,300.0	1,246.6	1,298.0	1,238.5	6.0	6.4	51.59	235.3	185.0	25.1	14.7	10.45	2.404		
1,400.0	1,330.4	1,397.1	1,320.2	7.1	7.5	42.88	279.4	219.6	24.7	13.7	10.97	2.253 SF		
1,500.0	1,411.2	1,496.0	1,398.8	8.2	8.6	32.62	326.6	256.7	24.3	13.7	10.65	2.284		
1,551.5	1,451.7	1,546.8	1,438.0	8.8	9.3	26.63	352.1	276.8	24.4	14.3	10.05	2.423		
1,600.0	1,489.0	1,594.8	1,474.1	9.4	9.9	20.74	376.9	296.2	24.4	15.2	9.20	2.650		
1,700.0	1,565.5	1,694.5	1,548.1	10.6	11.1	8.43	429.5	337.6	26.5	19.4	7.06	3.751		
1,800.0	1,642.0	1,794.3	1,622.1	11.8	12.4	-1.70	482.1	378.9	29.6	23.5	6.09	4.865		
1,900.0	1,718.4	1,894.2	1,696.2	13.0	13.6	-9.71	534.8	420.3	33.5	26.3	7.15	4.680		
2,000.0	1,794.9	1,994.0	1,770.2	14.3	14.9	-15.97	587.4	461.7	37.9	28.4	9.42	4.018		
2,100.0	1,871.4	2,093.8	1,844.3	15.5	16.2	-20.88	640.1	503.0	42.6	30.5	12.04	3.537		
2,200.0	1,947.9	2,193.7	1,918.3	16.7	17.4	-24.79	692.7	544.4	47.6	32.9	14.70	3.236		
2,300.0	2,024.4	2,293.5	1,992.4	17.9	18.7	-27.95	745.3	585.7	52.7	35.4	17.31	3.047		
2,400.0	2,100.9	2,393.3	2,066.4	19.2	20.0	-30.54	798.0	627.1	58.0	38.2	19.85	2.924		
2,500.0	2,177.4	2,493.1	2,140.5	20.4	21.3	-32.69	850.6	668.5	63.4	41.1	22.32	2.842		
2,600.0	2,253.9	2,593.0	2,214.5	21.6	22.5	-34.50	903.3	709.8	68.9	44.2	24.73	2.787		
2,700.0	2,330.4	2,692.8	2,288.6	22.9	23.8	-36.04	955.9	751.2	74.4	47.4	27.08	2.749		
2,800.0	2,406.9	2,792.6	2,362.6	24.1	25.1	-37.37	1,008.6	792.6	80.0	50.6	29.39	2.722		
2,900.0	2,483.4	2,892.5	2,436.7	25.3	26.4	-38.53	1,061.2	833.9	85.6	54.0	31.67	2.704		
3,000.0	2,559.9	2,992.3	2,510.7	26.6	27.6	-39.54	1,113.8	875.3	91.3	57.4	33.92	2.691		
3,100.0	2,636.4	3,092.1	2,584.8	27.8	28.9	-40.44	1,166.5	916.7	96.9	60.8	36.14	2.683		

Anticollision Report

Company:	EnCana Oil & Gas (USA) Inc	Local Co-ordinate Reference:	Well NP MF06C-3 O04 696 (was 09C-4)
Project:	North Piceance	TVD Reference:	WELL @ 6044.0ft (Original Well Elev)
Reference Site:	O04 696 (3rd)	MD Reference:	WELL @ 6044.0ft (Original Well Elev)
Site Error:	0.0ft	North Reference:	True
Reference Well:	NP MF06C-3 O04 696 (was 09C-4)	Survey Calculation Method:	Minimum Curvature
Well Error:	0.0ft	Output errors are at	2.00 sigma
Reference Wellbore	DD	Database:	EDM 5000.1 US Multi Users DB
Reference Design:	Plan #2	Offset TVD Reference:	Offset Datum

Offset Design O04 696 (3rd) - NP MF06E-3 O04 696 (was 11B-3) - DD - Plan #2													Offset Site Error:	0.0 ft
Survey Program: 0-MWD													Offset Well Error:	0.0 ft
Reference		Offset		Semi Major Axis		Highside Toolface (°)	Distance		Total Uncertainty Axis	Separation Factor	Warning			
Measured Depth (ft)	Vertical Depth (ft)	Measured Depth (ft)	Vertical Depth (ft)	Reference (ft)	Offset (ft)		Offset Wellbore Centre +N/-S (ft)	+E/-W (ft)						
0.0	0.0	0.0	0.0	0.0	0.0	125.69	-5.1	7.0	8.7					
100.0	100.0	100.0	100.0	0.1	0.1	125.69	-5.1	7.0	8.7	8.4	0.27	31.878		
200.0	200.0	200.0	200.0	0.3	0.3	125.69	-5.1	7.0	8.7	8.1	0.62	13.969	CC, ES	
300.0	300.0	299.7	299.6	0.5	0.5	126.10	-4.1	9.5	11.6	10.7	0.98	11.862		
400.0	399.6	398.8	398.5	0.7	0.7	117.99	-1.2	16.6	20.3	18.9	1.39	14.614		
500.0	498.9	498.0	496.8	1.0	1.0	104.73	4.1	28.2	31.0	29.1	1.89	16.425		
600.0	597.5	597.3	594.5	1.3	1.3	97.76	13.1	43.2	41.3	38.7	2.54	16.229		
700.0	695.1	696.7	691.4	1.7	1.8	93.50	26.1	61.4	50.8	47.4	3.36	15.106		
800.0	791.6	796.1	787.0	2.2	2.3	90.60	43.0	82.8	59.6	55.2	4.36	13.669		
900.0	886.5	895.5	881.1	2.8	2.9	88.47	63.8	107.3	67.6	62.1	5.53	12.213		
1,000.0	979.8	995.0	973.4	3.5	3.6	86.81	88.3	134.8	74.8	67.9	6.89	10.857		
1,100.0	1,071.0	1,094.5	1,063.8	4.2	4.4	85.46	116.6	165.3	81.3	72.9	8.43	9.639		
1,200.0	1,160.0	1,194.1	1,151.9	5.1	5.3	84.31	148.6	198.8	86.9	76.8	10.15	8.561		
1,300.0	1,246.6	1,293.6	1,237.5	6.0	6.2	83.31	184.1	235.0	91.7	79.7	12.05	7.612		
1,400.0	1,330.4	1,393.1	1,320.4	7.1	7.3	82.41	223.1	274.0	95.7	81.6	14.12	6.776		
1,500.0	1,411.2	1,492.7	1,400.4	8.2	8.4	81.60	265.4	315.5	98.8	82.5	16.36	6.042	SF	

Anticollision Report

Company:	EnCana Oil & Gas (USA) Inc	Local Co-ordinate Reference:	Well NP MF06C-3 O04 696 (was 09C-4)
Project:	North Piceance	TVD Reference:	WELL @ 6044.0ft (Original Well Elev)
Reference Site:	O04 696 (3rd)	MD Reference:	WELL @ 6044.0ft (Original Well Elev)
Site Error:	0.0ft	North Reference:	True
Reference Well:	NP MF06C-3 O04 696 (was 09C-4)	Survey Calculation Method:	Minimum Curvature
Well Error:	0.0ft	Output errors are at	2.00 sigma
Reference Wellbore	DD	Database:	EDM 5000.1 US Multi Users DB
Reference Design:	Plan #2	Offset TVD Reference:	Offset Datum

Offset Design												Offset Site Error:		0.0 ft
Survey Program: 0-MWD												Offset Well Error:		0.0 ft
Reference		Offset		Semi Major Axis			Distance						Warning	
Measured Depth (ft)	Vertical Depth (ft)	Measured Depth (ft)	Vertical Depth (ft)	Reference (ft)	Offset (ft)	Highside Toolface (°)	Offset Wellbore Centre +N/-S (ft) +E/-W (ft)		Between Centres (ft)	Between Ellipses (ft)	Total Uncertainty Axis	Separation Factor		
0.0	0.0	0.0	0.0	0.0	0.0	171.99	-11.1	1.6	11.2					
100.0	100.0	100.0	100.0	0.1	0.1	171.99	-11.1	1.6	11.2	11.0	0.27	41.280		
200.0	200.0	200.0	200.0	0.3	0.3	171.99	-11.1	1.6	11.2	10.6	0.62	18.089	CC, ES	
300.0	300.0	300.0	300.0	0.5	0.5	174.30	-11.1	1.6	13.8	12.9	0.97	14.274		
400.0	399.6	400.4	400.3	0.7	0.7	164.13	-9.1	3.3	19.8	18.4	1.32	14.941		
500.0	498.9	500.9	500.6	1.0	0.9	147.98	-3.0	8.4	25.7	24.0	1.71	14.993		
600.0	597.5	601.7	600.5	1.3	1.2	139.95	7.1	16.9	31.1	28.9	2.19	14.231		
700.0	695.1	702.7	699.7	1.7	1.5	135.58	21.3	28.8	36.0	33.2	2.77	12.986		
800.0	791.6	803.8	798.0	2.2	1.9	133.16	39.5	44.0	40.2	36.7	3.48	11.568		
900.0	886.5	905.1	895.0	2.8	2.5	131.94	61.7	62.7	43.9	39.6	4.31	10.185		
1,000.0	979.8	1,006.2	990.2	3.5	3.1	131.44	87.6	84.6	47.1	41.9	5.25	8.967		
1,100.0	1,071.0	1,106.8	1,083.2	4.2	3.8	130.60	115.8	110.8	51.3	44.9	6.39	8.029		
1,200.0	1,160.0	1,207.5	1,174.1	5.1	4.6	129.26	146.1	141.5	56.9	49.1	7.75	7.334		
1,300.0	1,246.6	1,308.0	1,262.8	6.0	5.5	127.58	178.2	176.5	63.7	54.4	9.36	6.812		
1,400.0	1,330.4	1,408.6	1,348.8	7.1	6.5	125.71	212.2	215.7	71.9	60.7	11.20	6.420		
1,500.0	1,411.2	1,508.9	1,432.0	8.2	7.6	123.77	247.9	259.1	81.5	68.2	13.29	6.132		
1,600.0	1,489.0	1,608.3	1,513.1	9.4	8.7	123.70	283.9	303.7	92.9	77.7	15.22	6.108	SF	

Anticollision Report

Company:	EnCana Oil & Gas (USA) Inc	Local Co-ordinate Reference:	Well NP MF06C-3 O04 696 (was 09C-4)
Project:	North Piceance	TVD Reference:	WELL @ 6044.0ft (Original Well Elev)
Reference Site:	O04 696 (3rd)	MD Reference:	WELL @ 6044.0ft (Original Well Elev)
Site Error:	0.0ft	North Reference:	True
Reference Well:	NP MF06C-3 O04 696 (was 09C-4)	Survey Calculation Method:	Minimum Curvature
Well Error:	0.0ft	Output errors are at	2.00 sigma
Reference Wellbore	DD	Database:	EDM 5000.1 US Multi Users DB
Reference Design:	Plan #2	Offset TVD Reference:	Offset Datum

Offset Design												O04 696 (3rd) - NP MF11B-3 O04 696 (was 14A-3) - DD - Plan #2		Offset Site Error:		0.0 ft	
Survey Program:												0-MWD		Offset Well Error:		0.0 ft	
Reference		Offset		Semi Major Axis			Distance							Warning			
Measured Depth (ft)	Vertical Depth (ft)	Measured Depth (ft)	Vertical Depth (ft)	Reference (ft)	Offset (ft)	Highside Toolface (°)	Offset Wellbore Centre +N/-S (ft)	+E/-W (ft)	Between Centres (ft)	Between Ellipses (ft)	Total Uncertainty Axis	Separation Factor					
0.0	0.0	0.0	0.0	0.0	0.0	-158.13	-27.3	-11.0	29.4								
100.0	100.0	100.0	100.0	0.1	0.1	-158.13	-27.3	-11.0	29.4	29.2	0.27	108.117					
200.0	200.0	200.0	200.0	0.3	0.3	-158.13	-27.3	-11.0	29.4	28.8	0.62	47.377	CC				
300.0	300.0	301.3	301.2	0.5	0.5	-161.84	-25.7	-8.8	29.7	28.7	0.98	30.417	ES				
400.0	399.6	402.2	401.8	0.7	0.7	177.94	-21.0	-2.4	31.5	30.1	1.35	23.264					
500.0	498.9	502.8	501.6	1.0	1.0	151.44	-13.1	8.3	35.6	33.8	1.82	19.589					
600.0	597.5	603.2	600.2	1.3	1.4	134.19	-2.1	23.1	41.6	39.2	2.46	16.943					
700.0	695.1	703.3	697.5	1.7	1.8	122.31	11.9	42.1	49.1	45.8	3.31	14.855					
800.0	791.6	803.2	793.2	2.2	2.4	113.83	28.9	65.0	57.8	53.4	4.36	13.242					
900.0	886.5	902.8	887.1	2.8	3.0	107.60	48.7	91.8	67.3	61.7	5.61	12.000					
1,000.0	979.8	1,002.2	978.8	3.5	3.8	102.90	71.4	122.5	77.5	70.5	7.04	11.023					
1,100.0	1,071.0	1,101.4	1,068.3	4.2	4.6	99.28	96.8	156.9	88.4	79.8	8.64	10.234					
1,200.0	1,160.0	1,200.3	1,155.2	5.1	5.5	96.42	124.9	194.9	99.8	89.4	10.42	9.579	SF				

Anticollision Report

Company:	EnCana Oil & Gas (USA) Inc	Local Co-ordinate Reference:	Well NP MF06C-3 O04 696 (was 09C-4)
Project:	North Piceance	TVD Reference:	WELL @ 6044.0ft (Original Well Elev)
Reference Site:	O04 696 (3rd)	MD Reference:	WELL @ 6044.0ft (Original Well Elev)
Site Error:	0.0ft	North Reference:	True
Reference Well:	NP MF06C-3 O04 696 (was 09C-4)	Survey Calculation Method:	Minimum Curvature
Well Error:	0.0ft	Output errors are at	2.00 sigma
Reference Wellbore	DD	Database:	EDM 5000.1 US Multi Users DB
Reference Design:	Plan #2	Offset TVD Reference:	Offset Datum

Offset Design O04 696 (3rd) - NP MF11D-3 O04 696 (was 14B-3) - DD - Plan #2												Offset Site Error:	0.0 ft
Survey Program: 0-MWD												Offset Well Error:	0.0 ft
Reference		Offset		Semi Major Axis			Distance						Warning
Measured Depth (ft)	Vertical Depth (ft)	Measured Depth (ft)	Vertical Depth (ft)	Reference (ft)	Offset (ft)	Highside Toolface (°)	Offset Wellbore Centre +N/-S (ft)	+E/-W (ft)	Between Centres (ft)	Between Ellipses (ft)	Total Uncertainty Axis	Separation Factor	
0.0	0.0	0.0	0.0	0.0	0.0	-154.86	-33.4	-15.7	36.9				
100.0	100.0	100.0	100.0	0.1	0.1	-154.86	-33.4	-15.7	36.9	36.6	0.27	135.459	
200.0	200.0	200.0	200.0	0.3	0.3	-154.86	-33.4	-15.7	36.9	36.3	0.62	59.358	CC
300.0	300.0	301.5	301.5	0.5	0.5	-158.06	-32.0	-13.3	37.2	36.2	0.98	38.008	ES
400.0	399.6	402.6	402.3	0.7	0.7	-177.02	-28.0	-6.3	39.0	37.7	1.36	28.752	
500.0	498.9	503.3	502.1	1.0	1.0	157.10	-21.4	5.2	43.6	41.8	1.81	24.064	
600.0	597.5	603.7	600.7	1.3	1.4	139.84	-12.2	21.2	50.9	48.4	2.43	20.912	
700.0	695.1	703.6	697.8	1.7	1.8	127.75	-0.5	41.6	60.4	57.1	3.26	18.516	
800.0	791.6	803.2	793.2	2.2	2.4	119.07	13.6	66.3	71.7	67.4	4.30	16.702	
900.0	886.5	902.3	886.6	2.8	3.0	112.70	30.2	95.1	84.7	79.2	5.52	15.334	
1,000.0	979.8	1,001.0	977.7	3.5	3.8	107.91	49.0	127.9	99.0	92.1	6.93	14.278	SF

Anticollision Report

Company:	EnCana Oil & Gas (USA) Inc	Local Co-ordinate Reference:	Well NP MF06C-3 O04 696 (was 09C-4)
Project:	North Piceance	TVD Reference:	WELL @ 6044.0ft (Original Well Elev)
Reference Site:	O04 696 (3rd)	MD Reference:	WELL @ 6044.0ft (Original Well Elev)
Site Error:	0.0ft	North Reference:	True
Reference Well:	NP MF06C-3 O04 696 (was 09C-4)	Survey Calculation Method:	Minimum Curvature
Well Error:	0.0ft	Output errors are at	2.00 sigma
Reference Wellbore	DD	Database:	EDM 5000.1 US Multi Users DB
Reference Design:	Plan #2	Offset TVD Reference:	Offset Datum

Offset Design													O04 696 (3rd) - NP MF11E-3 O04 696 (was 13A-3) - DD - Plan #2		Offset Site Error:		0.0 ft
Survey Program:													0-MWD		Offset Well Error:		0.0 ft
Reference		Offset		Semi Major Axis			Distance										
Measured Depth	Vertical Depth	Measured Depth	Vertical Depth	Reference	Offset	Highside Toolface	Offset Wellbore Centre		Between Centres	Between Ellipses	Total Uncertainty Axis	Separation Factor	Warning				
(ft)	(ft)	(ft)	(ft)	(ft)	(ft)	(°)	+N/-S (ft)	+E/-W (ft)	(ft)	(ft)							
0.0	0.0	0.0	0.0	0.0	0.0	-142.25	-44.5	-34.5	56.3								
100.0	100.0	100.0	100.0	0.1	0.1	-142.25	-44.5	-34.5	56.3	56.0	0.27	206.780					
200.0	200.0	200.0	200.0	0.3	0.3	-142.25	-44.5	-34.5	56.3	55.7	0.62	90.612					
300.0	300.0	302.6	302.6	0.5	0.5	-144.27	-43.4	-32.0	56.0	55.1	0.98	57.170					
344.8	344.6	348.4	348.3	0.6	0.6	-151.96	-42.1	-29.2	55.9	54.8	1.15	48.646	CC, ES				
400.0	399.6	404.7	404.3	0.7	0.7	-160.49	-39.9	-24.5	56.2	54.8	1.36	41.331					
500.0	498.9	506.3	505.0	1.0	1.0	175.10	-34.2	-12.2	58.6	56.8	1.78	32.921					
600.0	597.5	607.4	604.3	1.3	1.4	157.43	-26.3	4.8	64.2	61.8	2.33	27.580					
700.0	695.1	707.9	701.9	1.7	1.9	143.81	-16.3	26.5	72.8	69.7	3.08	23.641					
800.0	791.6	807.9	797.7	2.2	2.4	133.26	-4.2	52.6	84.4	80.3	4.08	20.702					
900.0	886.5	907.3	891.3	2.8	3.1	125.12	9.9	83.0	98.5	93.2	5.30	18.591	SF				

Anticollision Report

Company:	EnCana Oil & Gas (USA) Inc	Local Co-ordinate Reference:	Well NP MF06C-3 O04 696 (was 09C-4)
Project:	North Piceance	TVD Reference:	WELL @ 6044.0ft (Original Well Elev)
Reference Site:	O04 696 (3rd)	MD Reference:	WELL @ 6044.0ft (Original Well Elev)
Site Error:	0.0ft	North Reference:	True
Reference Well:	NP MF06C-3 O04 696 (was 09C-4)	Survey Calculation Method:	Minimum Curvature
Well Error:	0.0ft	Output errors are at	2.00 sigma
Reference Wellbore	DD	Database:	EDM 5000.1 US Multi Users DB
Reference Design:	Plan #2	Offset TVD Reference:	Offset Datum

Offset Design													004 696 (3rd) - NP MF11G-3 004 696 (was 14C-3) - DD - Plan #2		Offset Site Error:		0.0 ft	
Survey Program: 0-MWD													Offset Well Error:		0.0 ft			
Reference		Offset		Semi Major Axis			Distance							Warning				
Measured Depth (ft)	Vertical Depth (ft)	Measured Depth (ft)	Vertical Depth (ft)	Reference (ft)	Offset (ft)	Highside Toolface (°)	Offset Wellbore Centre +N/-S (ft) +E/-W (ft)		Between Centres (ft)	Between Ellipses (ft)	Total Uncertainty Axis	Separation Factor						
0.0	0.0	0.0	0.0	0.0	0.0	-142.25	-50.6	-39.2	64.0									
100.0	100.0	100.0	100.0	0.1	0.1	-142.25	-50.6	-39.2	64.0	63.7	0.27	234.978						
200.0	200.0	200.0	200.0	0.3	0.3	-142.25	-50.6	-39.2	64.0	63.4	0.62	102.968	CC, ES					
300.0	300.0	300.0	300.0	0.5	0.5	-142.64	-50.6	-39.2	66.0	65.1	0.97	67.873						
400.0	399.6	402.4	402.3	0.7	0.7	-155.21	-49.9	-36.5	70.6	69.2	1.34	52.783						
500.0	498.9	504.4	504.0	1.0	0.9	-175.80	-47.9	-28.6	77.0	75.3	1.71	45.100						
600.0	597.5	606.0	604.7	1.3	1.2	169.95	-44.6	-15.4	86.0	83.9	2.12	40.515						
700.0	695.1	707.0	703.9	1.7	1.5	158.91	-40.1	2.7	98.1	95.4	2.66	36.900	SF					

Anticollision Report

Company:	EnCana Oil & Gas (USA) Inc	Local Co-ordinate Reference:	Well NP MF06C-3 O04 696 (was 09C-4)
Project:	North Piceance	TVD Reference:	WELL @ 6044.0ft (Original Well Elev)
Reference Site:	O04 696 (3rd)	MD Reference:	WELL @ 6044.0ft (Original Well Elev)
Site Error:	0.0ft	North Reference:	True
Reference Well:	NP MF06C-3 O04 696 (was 09C-4)	Survey Calculation Method:	Minimum Curvature
Well Error:	0.0ft	Output errors are at	2.00 sigma
Reference Wellbore	DD	Database:	EDM 5000.1 US Multi Users DB
Reference Design:	Plan #2	Offset TVD Reference:	Offset Datum

Offset Design													O04 696 (3rd) - NP MF14A-3 O04 696 (was 13B-3) - DD - Plan #2		Offset Site Error:		0.0 ft
Survey Program: 0-MWD													Offset Well Error:		0.0 ft		
Reference		Offset		Semi Major Axis			Distance							Warning			
Measured Depth	Vertical Depth	Measured Depth	Vertical Depth	Reference	Offset	Highside Toolface	Offset Wellbore Centre		Between Centres	Between Ellipses	Total Uncertainty Axis	Separation Factor					
(ft)	(ft)	(ft)	(ft)	(ft)	(ft)	(°)	+N/-S (ft)	+E/-W (ft)	(ft)	(ft)							
0.0	0.0	0.0	0.0	0.0	0.0	-150.37	-49.6	-28.2	57.0								
100.0	100.0	100.0	100.0	0.1	0.1	-150.37	-49.6	-28.2	57.0	56.8	0.27	209.482					
200.0	200.0	200.0	200.0	0.3	0.3	-150.37	-49.6	-28.2	57.0	56.4	0.62	91.796 CC, ES					
300.0	300.0	301.8	301.8	0.5	0.5	-152.79	-49.1	-25.5	57.7	56.7	0.98	58.817					
400.0	399.6	402.9	402.5	0.7	0.7	-169.59	-47.8	-17.6	60.8	59.4	1.37	44.325					
500.0	498.9	503.2	501.9	1.0	1.0	166.23	-45.5	-4.5	68.1	66.2	1.83	37.289					
600.0	597.5	602.6	599.6	1.3	1.4	149.90	-42.4	13.5	79.8	77.4	2.40	33.212					
700.0	695.1	701.0	695.3	1.7	1.8	138.29	-38.6	36.2	95.8	92.7	3.15	30.380 SF					

Anticollision Report

Company:	EnCana Oil & Gas (USA) Inc	Local Co-ordinate Reference:	Well NP MF06C-3 O04 696 (was 09C-4)
Project:	North Piceance	TVD Reference:	WELL @ 6044.0ft (Original Well Elev)
Reference Site:	O04 696 (3rd)	MD Reference:	WELL @ 6044.0ft (Original Well Elev)
Site Error:	0.0ft	North Reference:	True
Reference Well:	NP MF06C-3 O04 696 (was 09C-4)	Survey Calculation Method:	Minimum Curvature
Well Error:	0.0ft	Output errors are at	2.00 sigma
Reference Wellbore	DD	Database:	EDM 5000.1 US Multi Users DB
Reference Design:	Plan #2	Offset TVD Reference:	Offset Datum

Offset Design O04 696 (3rd) - NP MF14C-3 O04 696 (was 14D-3) - DD - Plan #2													Offset Site Error:	0.0 ft
Survey Program: 0-MWD													Offset Well Error:	0.0 ft
Reference		Offset		Semi Major Axis			Distance							
Measured Depth (ft)	Vertical Depth (ft)	Measured Depth (ft)	Vertical Depth (ft)	Reference (ft)	Offset (ft)	Highside Toolface (°)	Offset Wellbore Centre +N/-S (ft)	+E/-W (ft)	Between Centres (ft)	Between Ellipses (ft)	Total Uncertainty Axis	Separation Factor	Warning	
0.0	0.0	0.0	0.0	0.0	0.0	-149.41	-55.6	-32.9	64.6					
100.0	100.0	100.0	100.0	0.1	0.1	-149.41	-55.6	-32.9	64.6	64.4	0.27	237.430		
200.0	200.0	200.0	200.0	0.3	0.3	-149.41	-55.6	-32.9	64.6	64.0	0.62	104.043	CC, ES	
300.0	300.0	301.7	301.6	0.5	0.5	-151.63	-55.6	-30.2	65.6	64.6	0.98	66.790		
400.0	399.6	402.5	402.1	0.7	0.7	-167.79	-55.5	-22.2	69.5	68.1	1.38	50.503		
500.0	498.9	502.3	501.1	1.0	1.0	168.70	-55.2	-9.0	78.2	76.4	1.83	42.786		
600.0	597.5	601.0	598.0	1.3	1.4	152.92	-54.9	9.0	92.2	89.8	2.39	38.590	SF	

Anticollision Report

Company:	EnCana Oil & Gas (USA) Inc	Local Co-ordinate Reference:	Well NP MF06C-3 O04 696 (was 09C-4)
Project:	North Piceance	TVD Reference:	WELL @ 6044.0ft (Original Well Elev)
Reference Site:	O04 696 (3rd)	MD Reference:	WELL @ 6044.0ft (Original Well Elev)
Site Error:	0.0ft	North Reference:	True
Reference Well:	NP MF06C-3 O04 696 (was 09C-4)	Survey Calculation Method:	Minimum Curvature
Well Error:	0.0ft	Output errors are at	2.00 sigma
Reference Wellbore	DD	Database:	EDM 5000.1 US Multi Users DB
Reference Design:	Plan #2	Offset TVD Reference:	Offset Datum

Offset Design O04 696 (3rd) - NP MF14D-3 O04 696 (was 19A-3) - DD - Plan #2													Offset Site Error: 0.0 ft
Survey Program: 0-MWD													Offset Well Error: 0.0 ft
Reference		Offset		Semi Major Axis		Distance							
Measured Depth (ft)	Vertical Depth (ft)	Measured Depth (ft)	Vertical Depth (ft)	Reference (ft)	Offset (ft)	Highside Toolface (°)	Offset Wellbore Centre +N/-S (ft)	+E/-W (ft)	Between Centres (ft)	Between Ellipses (ft)	Total Uncertainty Axis	Separation Factor	Warning
0.0	0.0	0.0	0.0	0.0	0.0	-141.83	-65.8	-51.7	83.7				
100.0	100.0	100.0	100.0	0.1	0.1	-141.83	-65.8	-51.7	83.7	83.4	0.27	307.240	
200.0	200.0	200.0	200.0	0.3	0.3	-141.83	-65.8	-51.7	83.7	83.0	0.62	134.634 CC, ES	
300.0	300.0	300.0	300.0	0.5	0.5	-141.90	-65.8	-51.7	85.7	84.7	0.97	88.067	
400.0	399.6	402.0	401.9	0.7	0.7	-153.70	-66.0	-49.0	90.8	89.4	1.34	67.797	
500.0	498.9	503.2	502.8	1.0	0.9	-173.71	-66.7	-40.9	99.1	97.4	1.72	57.707 SF	

Anticollision Report

Company:	EnCana Oil & Gas (USA) Inc	Local Co-ordinate Reference:	Well NP MF06C-3 O04 696 (was 09C-4)
Project:	North Piceance	TVD Reference:	WELL @ 6044.0ft (Original Well Elev)
Reference Site:	O04 696 (3rd)	MD Reference:	WELL @ 6044.0ft (Original Well Elev)
Site Error:	0.0ft	North Reference:	True
Reference Well:	NP MF06C-3 O04 696 (was 09C-4)	Survey Calculation Method:	Minimum Curvature
Well Error:	0.0ft	Output errors are at	2.00 sigma
Reference Wellbore	DD	Database:	EDM 5000.1 US Multi Users DB
Reference Design:	Plan #2	Offset TVD Reference:	Offset Datum

Offset Design O04 696 (3rd) - NP MF14E-3 O04 696 (was 19B-3) - DD - Plan #2													Offset Site Error: 0.0 ft
Survey Program: 0-MWD													Offset Well Error: 0.0 ft
Reference		Offset		Semi Major Axis			Distance						
Measured Depth (ft)	Vertical Depth (ft)	Measured Depth (ft)	Vertical Depth (ft)	Reference (ft)	Offset (ft)	Highside Toolface (°)	Offset Wellbore Centre +N/-S (ft)	+E/-W (ft)	Between Centres (ft)	Between Ellipses (ft)	Total Uncertainty Axis	Separation Factor	Warning
0.0	0.0	0.0	0.0	0.0	0.0	-147.32	-70.8	-45.4	84.1				
100.0	100.0	100.0	100.0	0.1	0.1	-147.32	-70.8	-45.4	84.1	83.9	0.27	309.044	
200.0	200.0	200.0	200.0	0.3	0.3	-147.32	-70.8	-45.4	84.1	83.5	0.62	135.424 CC, ES	
300.0	300.0	301.2	301.1	0.5	0.5	-148.99	-71.5	-42.8	85.6	84.6	0.98	87.136	
400.0	399.6	401.3	400.9	0.7	0.7	-163.63	-73.6	-35.2	91.1	89.7	1.38	65.981 SF	

Anticollision Report

Company:	EnCana Oil & Gas (USA) Inc	Local Co-ordinate Reference:	Well NP MF06C-3 O04 696 (was 09C-4)
Project:	North Piceance	TVD Reference:	WELL @ 6044.0ft (Original Well Elev)
Reference Site:	O04 696 (3rd)	MD Reference:	WELL @ 6044.0ft (Original Well Elev)
Site Error:	0.0ft	North Reference:	True
Reference Well:	NP MF06C-3 O04 696 (was 09C-4)	Survey Calculation Method:	Minimum Curvature
Well Error:	0.0ft	Output errors are at	2.00 sigma
Reference Wellbore	DD	Database:	EDM 5000.1 US Multi Users DB
Reference Design:	Plan #2	Offset TVD Reference:	Offset Datum

Offset Design												004 696 (3rd) - NP MF15A-4 004 696 (was 11D-3) - DD - Plan #2		Offset Site Error:		0.0 ft	
Survey Program: 0-MWD														Offset Well Error:		0.0 ft	
Reference		Offset		Semi Major Axis			Distance										
Measured Depth Depth (ft)	Vertical Depth (ft)	Measured Depth (ft)	Vertical Depth (ft)	Reference (ft)	Offset (ft)	Highside Toolface (°)	Offset Wellbore Centre +N/-S (ft)	+E/-W (ft)	Between Centres (ft)	Between Ellipses (ft)	Total Uncertainty Axis	Separation Factor	Warning				
0.0	0.0	0.0	0.0	0.0	0.0	-142.25	-28.3	-21.9	35.8								
100.0	100.0	100.0	100.0	0.1	0.1	-142.25	-28.3	-21.9	35.8	35.6	0.27	131.587					
200.0	200.0	200.0	200.0	0.3	0.3	-142.25	-28.3	-21.9	35.8	35.2	0.62	57.662	CC, ES				
300.0	300.0	301.1	301.1	0.5	0.5	-140.45	-25.8	-22.7	36.3	35.3	0.98	37.001					
400.0	399.6	402.2	401.8	0.7	0.7	-145.24	-18.1	-24.9	37.9	36.5	1.38	27.414					
500.0	498.9	503.0	501.7	1.0	1.0	-150.96	-5.3	-28.6	41.9	40.1	1.86	22.498					
600.0	597.5	603.0	600.0	1.3	1.4	-146.77	12.4	-33.7	50.3	47.8	2.49	20.175					
700.0	695.1	701.8	696.2	1.7	1.8	-140.69	34.0	-40.0	64.4	61.1	3.25	19.810	SF				
800.0	791.6	799.6	791.2	2.2	2.2	-138.12	56.1	-46.4	84.2	80.1	4.04	20.819					

Anticollision Report

Company:	EnCana Oil & Gas (USA) Inc	Local Co-ordinate Reference:	Well NP MF06C-3 O04 696 (was 09C-4)
Project:	North Piceance	TVD Reference:	WELL @ 6044.0ft (Original Well Elev)
Reference Site:	O04 696 (3rd)	MD Reference:	WELL @ 6044.0ft (Original Well Elev)
Site Error:	0.0ft	North Reference:	True
Reference Well:	NP MF06C-3 O04 696 (was 09C-4)	Survey Calculation Method:	Minimum Curvature
Well Error:	0.0ft	Output errors are at	2.00 sigma
Reference Wellbore	DD	Database:	EDM 5000.1 US Multi Users DB
Reference Design:	Plan #2	Offset TVD Reference:	Offset Datum

Offset Design O04 696 (3rd) - NP MF19A-3 O04 696 (was 17B-4) - DD - Plan #2													Offset Site Error: 0.0 ft
Survey Program: 0-MWD													Offset Well Error: 0.0 ft
Reference		Offset		Semi Major Axis			Distance						
Measured Depth (ft)	Vertical Depth (ft)	Measured Depth (ft)	Vertical Depth (ft)	Reference (ft)	Offset (ft)	Highside Toolface (°)	Offset Wellbore Centre +N/-S (ft)	+E/-W (ft)	Between Centres (ft)	Between Ellipses (ft)	Total Uncertainty Axis	Separation Factor	Warning
0.0	0.0	0.0	0.0	0.0	0.0	-142.25	-72.8	-56.4	92.1				
100.0	100.0	100.0	100.0	0.1	0.1	-142.25	-72.8	-56.4	92.1	91.9	0.27	338.368	
200.0	200.0	200.0	200.0	0.3	0.3	-142.25	-72.8	-56.4	92.1	91.5	0.62	148.274 CC, ES	
300.0	300.0	300.5	300.5	0.5	0.5	-142.62	-73.1	-55.8	94.0	93.1	0.97	96.478	
400.0	399.6	400.9	400.7	0.7	0.7	-155.59	-75.2	-50.9	99.6	98.2	1.35	73.789 SF	

Anticollision Report

Company:	EnCana Oil & Gas (USA) Inc	Local Co-ordinate Reference:	Well NP MF06C-3 O04 696 (was 09C-4)
Project:	North Piceance	TVD Reference:	WELL @ 6044.0ft (Original Well Elev)
Reference Site:	O04 696 (3rd)	MD Reference:	WELL @ 6044.0ft (Original Well Elev)
Site Error:	0.0ft	North Reference:	True
Reference Well:	NP MF06C-3 O04 696 (was 09C-4)	Survey Calculation Method:	Minimum Curvature
Well Error:	0.0ft	Output errors are at	2.00 sigma
Reference Wellbore	DD	Database:	EDM 5000.1 US Multi Users DB
Reference Design:	Plan #2	Offset TVD Reference:	Offset Datum

Offset Design O04 696 (3rd) - NP MF19C-3 O04 696 (was 20B-3) - DD - Plan #2													Offset Site Error: 0.0 ft
Survey Program: 0-MWD													Offset Well Error: 0.0 ft
Reference		Offset		Semi Major Axis		Distance							
Measured Depth (ft)	Vertical Depth (ft)	Measured Depth (ft)	Vertical Depth (ft)	Reference (ft)	Offset (ft)	Highside Toolface (°)	Offset Wellbore Centre +N/-S (ft)	+E/-W (ft)	Between Centres (ft)	Between Ellipses (ft)	Total Uncertainty Axis	Separation Factor	Warning
0.0	0.0	0.0	0.0	0.0	0.0	-147.24	-77.9	-50.1	92.6				
100.0	100.0	100.0	100.0	0.1	0.1	-147.24	-77.9	-50.1	92.6	92.4	0.27	340.259	
200.0	200.0	200.0	200.0	0.3	0.3	-147.24	-77.9	-50.1	92.6	92.0	0.62	149.103 CC, ES	
300.0	300.0	300.0	299.9	0.5	0.5	-148.67	-79.2	-47.9	94.8	93.8	0.98	96.668 SF	

Anticollision Report

Company:	EnCana Oil & Gas (USA) Inc	Local Co-ordinate Reference:	Well NP MF06C-3 O04 696 (was 09C-4)
Project:	North Piceance	TVD Reference:	WELL @ 6044.0ft (Original Well Elev)
Reference Site:	O04 696 (3rd)	MD Reference:	WELL @ 6044.0ft (Original Well Elev)
Site Error:	0.0ft	North Reference:	True
Reference Well:	NP MF06C-3 O04 696 (was 09C-4)	Survey Calculation Method:	Minimum Curvature
Well Error:	0.0ft	Output errors are at	2.00 sigma
Reference Wellbore	DD	Database:	EDM 5000.1 US Multi Users DB
Reference Design:	Plan #2	Offset TVD Reference:	Offset Datum

Reference Depths are relative to WELL @ 6044.0ft (Original Well Elev)

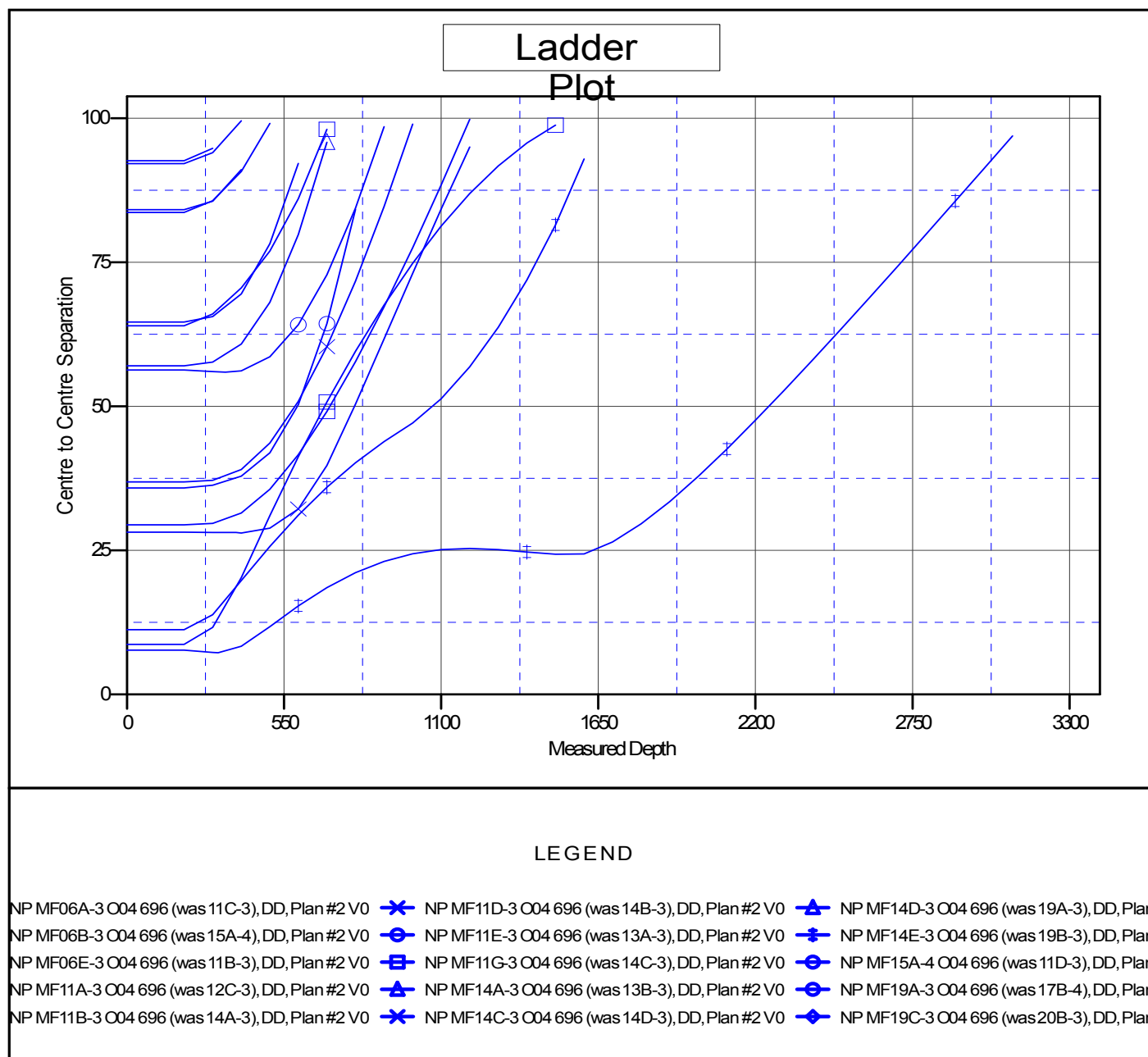
Offset Depths are relative to Offset Datum

Central Meridian is 105° 30' 0.00 W °

Coordinates are relative to: NP MF06C-3 O04 696 (was 09C-4)

Coordinate System is US State Plane 1983, Colorado Central Zone

Grid Convergence at Surface is: -1.64°



CC - Min centre to center distance or convergent point, SF - min separation factor, ES - min ellipse separation