

KERR-MCGEE OIL & GAS ONSHORE LP

Location: COLORADO Slot: SLOT#11 KERBS 32C-14HZ (1921' FNL & 313' FEL, SEC.13)
Field: WELD COUNTY (KERR MCGEE) Well: KERBS 32C-14HZ
Facility: SEC.13-T3N-R68W Wellbore: KERBS 32C-14HZ PWB

Plot reference wellpath is KERBS 32C-14HZ (PERMIT REV-1)PWB

True vertical depths are referenced to PERMIT (17 KB) (RKB) Grid System: NAD83 / Lambert Colorado SP, Northern Zone (501), US feet
Measured depths are referenced to PERMIT (17 KB) (RKB) North Reference: True north
PERMIT (17 KB) (RKB) to Mean Sea Level: 4890 feet Scale: True distance
Mean Sea Level to Mud line (At Slot: SLOT#11 KERBS 32C-14HZ (1921' FNL & 313' FEL, SEC.13): 0 feet Depths are in feet
Coordinates are in feet referenced to Slot Created by precision on 10Jul2013

Location Information

| Facility Name | | | Grid East (US Ft) | Grid North (US Ft) | Latitude | Longitude |
|---------------------------------------------------------------------------------------------------|--------------|--------------|-------------------|--------------------|----------------|-----------------|
| SEC.13-T3N-R68W | | | 3155503.948 | 1323690.631 | 40°13'14.116"N | 104°56'35.262"W |
| Slot | Local N (ft) | Local E (ft) | Grid East (US Ft) | Grid North (US Ft) | Latitude | Longitude |
| SLOT#11 KERBS 32C-14HZ (1921' FNL & 313' FEL, SEC.13) | 2866.62 | 73.84 | 3155509.846 | 1326647.355 | 40°13'42.344"N | 104°56'34.310"W |
| PERMIT (17 KB) (RKB) to Mud line (At Slot: SLOT#11 KERBS 32C-14HZ (1921' FNL & 313' FEL, SEC.13)) | | | | | | 4890ft |
| Mean Sea Level to Mud line (At Slot: SLOT#11 KERBS 32C-14HZ (1921' FNL & 313' FEL, SEC.13)) | | | | | | 0ft |
| PERMIT (17 KB) (RKB) to Mean Sea Level | | | | | | 4890ft |

Survey Program

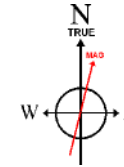
| Start MD (ft) | End MD (ft) | Tool | Model | Log Name/Comment | Wellbore |
|---------------|-------------|----------|---------------------|------------------|--------------------|
| 17.00 | 7606.40 | NaviTrak | NaviTrak (Standard) | | KERBS 32C-14HZ PWB |
| 7606.40 | 17511.82 | OnTrak | OnTrak (Standard) | | KERBS 32C-14HZ PWB |

Well Profile Data

| Design Comment | MD (ft) | Inc (°) | Az (°) | TVD (ft) | Local N (ft) | Local E (ft) | DLS (°/100ft) | VS (ft) |
|-----------------------|----------|---------|---------|----------|--------------|--------------|---------------|----------|
| TIE-ON | 17.00 | 0.000 | 154.000 | 17.00 | 0.00 | 0.00 | 0.00 | 0.00 |
| BEGIN NUDGE | 1100.00 | 0.000 | 154.000 | 1100.00 | 0.00 | 0.00 | 0.00 | 0.00 |
| END NUDGE | 1600.00 | 10.000 | 154.000 | 1597.47 | -39.12 | 19.08 | 2.00 | -18.79 |
| BEGIN DROP | 4374.69 | -10.000 | 154.000 | 4330.00 | -472.17 | 230.29 | 0.00 | -226.76 |
| END DROP | 4874.69 | 0.000 | 269.572 | 4827.47 | -511.29 | 249.37 | 2.00 | -245.55 |
| KOP, BUILD @ 10°/100' | 6707.27 | 0.000 | 269.572 | 6660.05 | -511.29 | 249.37 | 0.00 | -245.55 |
| LANDING POINT | 7606.40 | 89.913 | 269.572 | 7233.00 | -515.56 | -322.70 | 10.00 | 326.54 |
| TOTAL DEPTH | 17511.82 | 89.913 | 269.572 | 7248.00 | -589.47 | -10227.83 | 0.00 | 10231.95 |

Targets

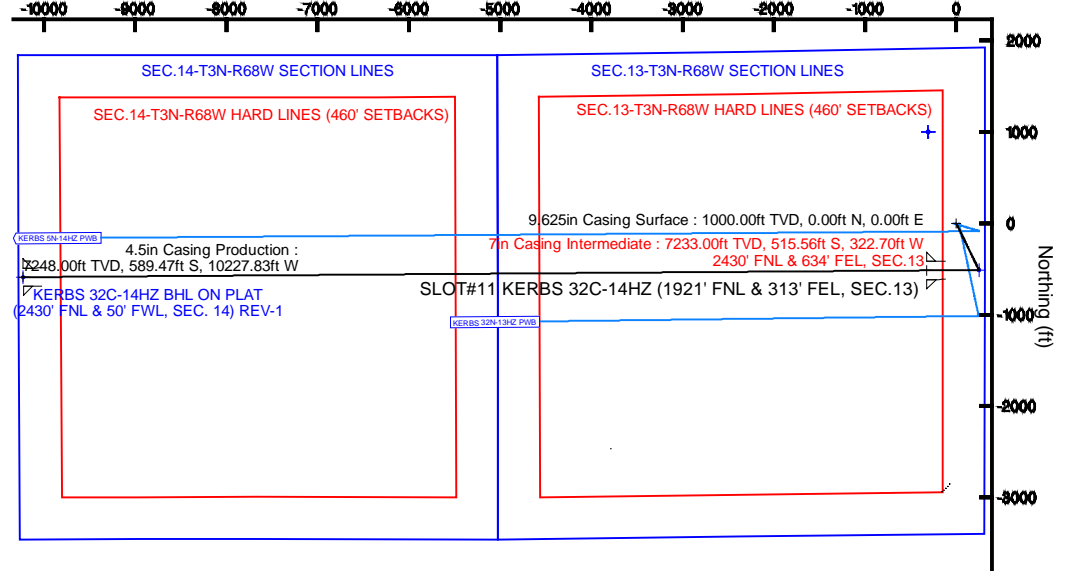
| Name | MD (ft) | TVD (ft) | Local N (ft) | Local E (ft) | Grid East (US Ft) | Grid North (US Ft) | Latitude | Longitude |
|-----------------------------------------------------------------|----------|----------|--------------|--------------|-------------------|--------------------|----------------|-----------------|
| MEASURE 50' | | 4827.47 | -511.29 | 249.37 | 3155512.41 | 1328537.64 | 40°13'37.291"N | 104°56'31.090"W |
| SEC.13-T3N-R68W HARD LINES (460' SETBACKS) | | 4890.00 | 1001.83 | -307.76 | 3155545.81 | 1327547.17 | 40°13'52.244"N | 104°56'38.276"W |
| SEC.13-T3N-R68W SECTION LINES | | 4890.00 | 1001.83 | -307.76 | 3155545.81 | 1327547.17 | 40°13'52.244"N | 104°56'38.276"W |
| SEC.14-T3N-R68W HARD LINES (460' SETBACKS) | | 4890.00 | 1001.83 | -307.76 | 3155545.81 | 1327547.17 | 40°13'52.244"N | 104°56'38.276"W |
| SEC.14-T3N-R68W SECTION LINES | | 4890.00 | 1001.83 | -307.76 | 3155545.81 | 1327547.17 | 40°13'52.244"N | 104°56'38.276"W |
| KERBS 32C-14HZ BHL ON PLAT (2430' FNL & 50' FWL, SEC. 14) REV-1 | 17511.82 | 7248.00 | -589.47 | -10227.83 | 3145336.38 | 1325893.64 | 40°13'35.488"N | 104°56'46.111"W |



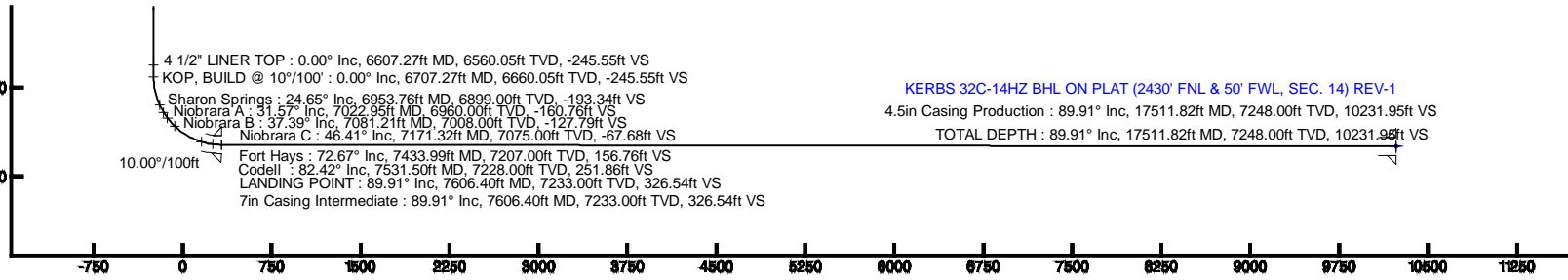
BGGM (1945.0 to 2015.0) Dip: 66.80° Field: 52738.4 nT
Magnetic North is 8.70 degrees East of True North (at 08/Jul2013)

To correct azimuth from Magnetic to True add 8.70 degrees

Scale 1 inch = 2000 ft



True Vertical Depth (ft)
Scale 1 inch = 1500 ft



Vertical Section (ft)

Azimuth 269.57° with reference 0.00 N, 0.00 E

Scale 1 inch = 1500 ft





Planned Wellpath Report

KERBS 32C-14HZ (PERMIT REV-1)PWP

Page 1 of 8



REFERENCE WELLPATH IDENTIFICATION

| | | | |
|----------|---------------------------------|----------|-------------------------------------------------------|
| Operator | KERR-MCGEE OIL & GAS ONSHORE LP | Slot | SLOT#11 KERBS 32C-14HZ (1921' FNL & 313' FEL, SEC.13) |
| Area | COLORADO | Well | KERBS 32C-14HZ |
| Field | WELD COUNTY (KERR MCGEE) | Wellbore | KERBS 32C-14HZ PWB |
| Facility | SEC.13-T3N-R68W | | |

REPORT SETUP INFORMATION

| | | | |
|---------------------|-----------------------------------------------------------|----------------------|-----------------------------------------|
| Projection System | NAD83 / Lambert Colorado SP, Northern Zone (501), US feet | Software System | WellArchitect® 4.0.0 |
| North Reference | True | User | Precain |
| Scale | 0.999957 | Report Generated | 10/Jul/2013 at 09:34 |
| Convergence at slot | n/a | Database/Source file | WellArchitectDB/_KERBS_32C-14HZ_PWB.xml |

WELLPATH LOCATION

| | Local coordinates | | Grid coordinates | | Geographic coordinates | |
|-----------------------|-------------------|----------|------------------|-----------------|------------------------|-----------------|
| | North[ft] | East[ft] | Easting[US ft] | Northing[US ft] | Latitude | Longitude |
| Slot Location | 2856.52 | 73.84 | 3155559.85 | 1326547.34 | 40°13'42.344"N | 104°56'34.310"W |
| Facility Reference Pt | | | 3155503.95 | 1323690.53 | 40°13'14.116"N | 104°56'35.262"W |
| Field Reference Pt | | | 3197771.84 | 1268891.29 | 40°04'09.600"N | 104°47'36.000"W |

WELLPATH DATUM

| | | | |
|--------------------------|-----------------------|---------------------------------------------------------------------------------------------------|-------------------|
| Calculation method | Minimum curvature | PERMIT (17' KB) (RKB) to Facility Vertical Datum | 4890.00ft |
| Horizontal Reference Pt | Slot | PERMIT (17' KB) (RKB) to Mean Sea Level | 4890.00ft |
| Vertical Reference Pt | PERMIT (17' KB) (RKB) | PERMIT (17' KB) (RKB) to Mud Line at Slot (SLOT#11 KERBS 32C-14HZ (1921' FNL & 313' FEL, SEC.13)) | 4890.00ft |
| MD Reference Pt | PERMIT (17' KB) (RKB) | Section Origin | N 0.00, E 0.00 ft |
| Field Vertical Reference | Mean Sea Level | Section Azimuth | 269.57° |



Planned Wellpath Report

KERBS 32C-14HZ (PERMIT REV-1)PWP

Page 2 of 8



REFERENCE WELLPATH IDENTIFICATION

| | | | |
|----------|---------------------------------|----------|-------------------------------------------------------|
| Operator | KERR-MCGEE OIL & GAS ONSHORE LP | Slot | SLOT#11 KERBS 32C-14HZ (1921' FNL & 313' FEL, SEC.13) |
| Area | COLORADO | Well | KERBS 32C-14HZ |
| Field | WELD COUNTY (KERR MCGEE) | Wellbore | KERBS 32C-14HZ PWB |
| Facility | SEC.13-T3N-R68W | | |

WELLPATH DATA (193 stations) † = interpolated/extrapolated station

| MD [ft] | Inclination [°] | Azimuth [°] | TVD [ft] | Vert Sect [ft] | North [ft] | East [ft] | Latitude | Longitude | DLS [°/100ft] | Comments |
|----------|-----------------|-------------|----------|----------------|------------|-----------|----------------|-----------------|---------------|----------------|
| 0.00† | 0.000 | 154.000 | 0.00 | 0.00 | 0.00 | 0.00 | 40°13'42.344"N | 104°56'34.310"W | 0.00 | |
| 17.00 | 0.000 | 154.000 | 17.00 | 0.00 | 0.00 | 0.00 | 40°13'42.344"N | 104°56'34.310"W | 0.00 | TIE-ON |
| 117.00† | 0.000 | 154.000 | 117.00 | 0.00 | 0.00 | 0.00 | 40°13'42.344"N | 104°56'34.310"W | 0.00 | |
| 217.00† | 0.000 | 154.000 | 217.00 | 0.00 | 0.00 | 0.00 | 40°13'42.344"N | 104°56'34.310"W | 0.00 | |
| 317.00† | 0.000 | 154.000 | 317.00 | 0.00 | 0.00 | 0.00 | 40°13'42.344"N | 104°56'34.310"W | 0.00 | |
| 417.00† | 0.000 | 154.000 | 417.00 | 0.00 | 0.00 | 0.00 | 40°13'42.344"N | 104°56'34.310"W | 0.00 | |
| 517.00† | 0.000 | 154.000 | 517.00 | 0.00 | 0.00 | 0.00 | 40°13'42.344"N | 104°56'34.310"W | 0.00 | |
| 617.00† | 0.000 | 154.000 | 617.00 | 0.00 | 0.00 | 0.00 | 40°13'42.344"N | 104°56'34.310"W | 0.00 | |
| 717.00† | 0.000 | 154.000 | 717.00 | 0.00 | 0.00 | 0.00 | 40°13'42.344"N | 104°56'34.310"W | 0.00 | |
| 817.00† | 0.000 | 154.000 | 817.00 | 0.00 | 0.00 | 0.00 | 40°13'42.344"N | 104°56'34.310"W | 0.00 | |
| 917.00† | 0.000 | 154.000 | 917.00 | 0.00 | 0.00 | 0.00 | 40°13'42.344"N | 104°56'34.310"W | 0.00 | |
| 938.00† | 0.000 | 154.000 | 938.00 | 0.00 | 0.00 | 0.00 | 40°13'42.344"N | 104°56'34.310"W | 0.00 | Fox Hills Base |
| 1017.00† | 0.000 | 154.000 | 1017.00 | 0.00 | 0.00 | 0.00 | 40°13'42.344"N | 104°56'34.310"W | 0.00 | |
| 1100.00 | 0.000 | 154.000 | 1100.00 | 0.00 | 0.00 | 0.00 | 40°13'42.344"N | 104°56'34.310"W | 0.00 | BEGIN NUDGE |
| 1117.00† | 0.340 | 154.000 | 1117.00 | -0.02 | -0.05 | 0.02 | 40°13'42.344"N | 104°56'34.310"W | 2.00 | |
| 1217.00† | 2.340 | 154.000 | 1216.97 | -1.03 | -2.15 | 1.05 | 40°13'42.323"N | 104°56'34.296"W | 2.00 | |
| 1317.00† | 4.340 | 154.000 | 1316.79 | -3.55 | -7.38 | 3.60 | 40°13'42.271"N | 104°56'34.264"W | 2.00 | |
| 1417.00† | 6.340 | 154.000 | 1416.35 | -7.56 | -15.75 | 7.68 | 40°13'42.188"N | 104°56'34.211"W | 2.00 | |
| 1517.00† | 8.340 | 154.000 | 1515.53 | -13.08 | -27.23 | 13.28 | 40°13'42.075"N | 104°56'34.139"W | 2.00 | |
| 1600.00 | 10.000 | 154.000 | 1597.47 | -18.79 | -39.12 | 19.08 | 40°13'41.957"N | 104°56'34.064"W | 2.00 | END NUDGE |
| 1617.00† | 10.000 | 154.000 | 1614.21 | -20.06 | -41.77 | 20.37 | 40°13'41.931"N | 104°56'34.047"W | 0.00 | |
| 1717.00† | 10.000 | 154.000 | 1712.69 | -27.56 | -57.38 | 27.99 | 40°13'41.777"N | 104°56'33.949"W | 0.00 | |
| 1817.00† | 10.000 | 154.000 | 1811.17 | -35.05 | -72.99 | 35.60 | 40°13'41.623"N | 104°56'33.851"W | 0.00 | |
| 1917.00† | 10.000 | 154.000 | 1909.65 | -42.55 | -88.59 | 43.21 | 40°13'41.469"N | 104°56'33.753"W | 0.00 | |
| 2017.00† | 10.000 | 154.000 | 2008.13 | -50.04 | -104.20 | 50.82 | 40°13'41.314"N | 104°56'33.655"W | 0.00 | |
| 2117.00† | 10.000 | 154.000 | 2106.61 | -57.54 | -119.81 | 58.43 | 40°13'41.160"N | 104°56'33.557"W | 0.00 | |
| 2217.00† | 10.000 | 154.000 | 2205.09 | -65.03 | -135.42 | 66.05 | 40°13'41.006"N | 104°56'33.458"W | 0.00 | |
| 2317.00† | 10.000 | 154.000 | 2303.57 | -72.53 | -151.02 | 73.66 | 40°13'40.852"N | 104°56'33.360"W | 0.00 | |
| 2417.00† | 10.000 | 154.000 | 2402.05 | -80.02 | -166.63 | 81.27 | 40°13'40.697"N | 104°56'33.262"W | 0.00 | |
| 2517.00† | 10.000 | 154.000 | 2500.53 | -87.52 | -182.24 | 88.88 | 40°13'40.543"N | 104°56'33.164"W | 0.00 | |
| 2617.00† | 10.000 | 154.000 | 2599.01 | -95.01 | -197.85 | 96.50 | 40°13'40.389"N | 104°56'33.066"W | 0.00 | |
| 2717.00† | 10.000 | 154.000 | 2697.50 | -102.51 | -213.45 | 104.11 | 40°13'40.235"N | 104°56'32.968"W | 0.00 | |
| 2817.00† | 10.000 | 154.000 | 2795.98 | -110.01 | -229.06 | 111.72 | 40°13'40.080"N | 104°56'32.870"W | 0.00 | |
| 2917.00† | 10.000 | 154.000 | 2894.46 | -117.50 | -244.67 | 119.33 | 40°13'39.926"N | 104°56'32.772"W | 0.00 | |
| 3017.00† | 10.000 | 154.000 | 2992.94 | -125.00 | -260.27 | 126.94 | 40°13'39.772"N | 104°56'32.673"W | 0.00 | |
| 3117.00† | 10.000 | 154.000 | 3091.42 | -132.49 | -275.88 | 134.56 | 40°13'39.618"N | 104°56'32.575"W | 0.00 | |
| 3217.00† | 10.000 | 154.000 | 3189.90 | -139.99 | -291.49 | 142.17 | 40°13'39.464"N | 104°56'32.477"W | 0.00 | |
| 3317.00† | 10.000 | 154.000 | 3288.38 | -147.48 | -307.10 | 149.78 | 40°13'39.309"N | 104°56'32.379"W | 0.00 | |
| 3417.00† | 10.000 | 154.000 | 3386.86 | -154.98 | -322.70 | 157.39 | 40°13'39.155"N | 104°56'32.281"W | 0.00 | |
| 3517.00† | 10.000 | 154.000 | 3485.34 | -162.47 | -338.31 | 165.01 | 40°13'39.001"N | 104°56'32.183"W | 0.00 | |
| 3617.00† | 10.000 | 154.000 | 3583.82 | -169.97 | -353.92 | 172.62 | 40°13'38.847"N | 104°56'32.085"W | 0.00 | |
| 3636.47† | 10.000 | 154.000 | 3603.00 | -171.43 | -356.96 | 174.10 | 40°13'38.817"N | 104°56'32.065"W | 0.00 | Parkman |
| 3717.00† | 10.000 | 154.000 | 3682.30 | -177.46 | -369.53 | 180.23 | 40°13'38.692"N | 104°56'31.986"W | 0.00 | |
| 3817.00† | 10.000 | 154.000 | 3780.78 | -184.96 | -385.13 | 187.84 | 40°13'38.538"N | 104°56'31.888"W | 0.00 | |
| 3917.00† | 10.000 | 154.000 | 3879.26 | -192.46 | -400.74 | 195.45 | 40°13'38.384"N | 104°56'31.790"W | 0.00 | |



Planned Wellpath Report

KERBS 32C-14HZ (PERMIT REV-1)PWP

Page 3 of 8



REFERENCE WELLPATH IDENTIFICATION

| | | | |
|----------|---------------------------------|----------|-------------------------------------------------------|
| Operator | KERR-MCGEE OIL & GAS ONSHORE LP | Slot | SLOT#11 KERBS 32C-14HZ (1921' FNL & 313' FEL, SEC.13) |
| Area | COLORADO | Well | KERBS 32C-14HZ |
| Field | WELD COUNTY (KERR MCGEE) | Wellbore | KERBS 32C-14HZ PWB |
| Facility | SEC.13-T3N-R68W | | |

WELLPATH DATA (193 stations) † = interpolated/extrapolated station

| MD [ft] | Inclination [°] | Azimuth [°] | TVD [ft] | Vert Sect [ft] | North [ft] | East [ft] | Latitude | Longitude | DLS [°/100ft] | Comments |
|----------|-----------------|-------------|----------|----------------|------------|-----------|----------------|-----------------|---------------|-----------------------|
| 4017.00† | 10.000 | 154.000 | 3977.75 | -199.95 | -416.35 | 203.07 | 40°13'38.230"N | 104°56'31.692"W | 0.00 | |
| 4117.00† | 10.000 | 154.000 | 4076.23 | -207.45 | -431.96 | 210.68 | 40°13'38.075"N | 104°56'31.594"W | 0.00 | |
| 4120.83† | 10.000 | 154.000 | 4080.00 | -207.73 | -432.55 | 210.97 | 40°13'38.070"N | 104°56'31.590"W | 0.00 | Sussex |
| 4217.00† | 10.000 | 154.000 | 4174.71 | -214.94 | -447.56 | 218.29 | 40°13'37.921"N | 104°56'31.496"W | 0.00 | |
| 4317.00† | 10.000 | 154.000 | 4273.19 | -222.44 | -463.17 | 225.90 | 40°13'37.767"N | 104°56'31.398"W | 0.00 | |
| 4374.69 | 10.000 | 154.000 | 4330.00 | -226.76 | -472.17 | 230.29 | 40°13'37.678"N | 104°56'31.341"W | 0.00 | BEGIN DROP |
| 4417.00† | 9.154 | 154.000 | 4371.72 | -229.80 | -478.50 | 233.38 | 40°13'37.615"N | 104°56'31.301"W | 2.00 | |
| 4517.00† | 7.154 | 154.000 | 4470.71 | -235.92 | -491.25 | 239.60 | 40°13'37.490"N | 104°56'31.221"W | 2.00 | |
| 4617.00† | 5.154 | 154.000 | 4570.12 | -240.55 | -500.88 | 244.30 | 40°13'37.394"N | 104°56'31.160"W | 2.00 | |
| 4717.00† | 3.154 | 154.000 | 4669.86 | -243.67 | -507.39 | 247.47 | 40°13'37.330"N | 104°56'31.119"W | 2.00 | |
| 4817.00† | 1.154 | 154.000 | 4769.78 | -245.30 | -510.77 | 249.12 | 40°13'37.297"N | 104°56'31.098"W | 2.00 | |
| 4874.69 | 0.000 | 269.572 | 4827.47 | -245.55 | -511.29 | 249.37 | 40°13'37.291"N | 104°56'31.095"W | 2.00 | END DROP |
| 4917.00† | 0.000 | 269.572 | 4869.78 | -245.55 | -511.29 | 249.37 | 40°13'37.291"N | 104°56'31.095"W | 0.00 | |
| 5017.00† | 0.000 | 269.572 | 4969.78 | -245.55 | -511.29 | 249.37 | 40°13'37.291"N | 104°56'31.095"W | 0.00 | |
| 5117.00† | 0.000 | 269.572 | 5069.78 | -245.55 | -511.29 | 249.37 | 40°13'37.291"N | 104°56'31.095"W | 0.00 | |
| 5217.00† | 0.000 | 269.572 | 5169.78 | -245.55 | -511.29 | 249.37 | 40°13'37.291"N | 104°56'31.095"W | 0.00 | |
| 5317.00† | 0.000 | 269.572 | 5269.78 | -245.55 | -511.29 | 249.37 | 40°13'37.291"N | 104°56'31.095"W | 0.00 | |
| 5417.00† | 0.000 | 269.572 | 5369.78 | -245.55 | -511.29 | 249.37 | 40°13'37.291"N | 104°56'31.095"W | 0.00 | |
| 5517.00† | 0.000 | 269.572 | 5469.78 | -245.55 | -511.29 | 249.37 | 40°13'37.291"N | 104°56'31.095"W | 0.00 | |
| 5617.00† | 0.000 | 269.572 | 5569.78 | -245.55 | -511.29 | 249.37 | 40°13'37.291"N | 104°56'31.095"W | 0.00 | |
| 5717.00† | 0.000 | 269.572 | 5669.78 | -245.55 | -511.29 | 249.37 | 40°13'37.291"N | 104°56'31.095"W | 0.00 | |
| 5817.00† | 0.000 | 269.572 | 5769.78 | -245.55 | -511.29 | 249.37 | 40°13'37.291"N | 104°56'31.095"W | 0.00 | |
| 5917.00† | 0.000 | 269.572 | 5869.78 | -245.55 | -511.29 | 249.37 | 40°13'37.291"N | 104°56'31.095"W | 0.00 | |
| 6017.00† | 0.000 | 269.572 | 5969.78 | -245.55 | -511.29 | 249.37 | 40°13'37.291"N | 104°56'31.095"W | 0.00 | |
| 6117.00† | 0.000 | 269.572 | 6069.78 | -245.55 | -511.29 | 249.37 | 40°13'37.291"N | 104°56'31.095"W | 0.00 | |
| 6217.00† | 0.000 | 269.572 | 6169.78 | -245.55 | -511.29 | 249.37 | 40°13'37.291"N | 104°56'31.095"W | 0.00 | |
| 6317.00† | 0.000 | 269.572 | 6269.78 | -245.55 | -511.29 | 249.37 | 40°13'37.291"N | 104°56'31.095"W | 0.00 | |
| 6417.00† | 0.000 | 269.572 | 6369.78 | -245.55 | -511.29 | 249.37 | 40°13'37.291"N | 104°56'31.095"W | 0.00 | |
| 6517.00† | 0.000 | 269.572 | 6469.78 | -245.55 | -511.29 | 249.37 | 40°13'37.291"N | 104°56'31.095"W | 0.00 | |
| 6607.27† | 0.000 | 269.572 | 6560.05 | -245.55 | -511.29 | 249.37 | 40°13'37.291"N | 104°56'31.095"W | 0.00 | 4 1/2" LINER TOP |
| 6617.00† | 0.000 | 269.572 | 6569.78 | -245.55 | -511.29 | 249.37 | 40°13'37.291"N | 104°56'31.095"W | 0.00 | |
| 6707.27 | 0.000 | 269.572 | 6660.05 | -245.55 | -511.29 | 249.37 | 40°13'37.291"N | 104°56'31.095"W | 0.00 | KOP, BUILD @ 10°/100' |
| 6717.00† | 0.973 | 269.572 | 6669.78 | -245.46 | -511.29 | 249.29 | 40°13'37.291"N | 104°56'31.096"W | 10.00 | |
| 6817.00† | 10.973 | 269.572 | 6769.11 | -235.07 | -511.37 | 238.90 | 40°13'37.291"N | 104°56'31.230"W | 10.00 | |
| 6917.00† | 20.973 | 269.572 | 6865.12 | -207.59 | -511.58 | 211.42 | 40°13'37.289"N | 104°56'31.584"W | 10.00 | |
| 6953.76† | 24.649 | 269.572 | 6899.00 | -193.34 | -511.68 | 197.17 | 40°13'37.288"N | 104°56'31.768"W | 10.00 | Sharon Springs |
| 7017.00† | 30.973 | 269.572 | 6954.91 | -163.85 | -511.90 | 167.68 | 40°13'37.285"N | 104°56'32.148"W | 10.00 | |
| 7022.95† | 31.569 | 269.572 | 6960.00 | -160.76 | -511.92 | 164.59 | 40°13'37.285"N | 104°56'32.188"W | 10.00 | Niobrara A |
| 7081.21† | 37.394 | 269.572 | 7008.00 | -127.79 | -512.17 | 131.62 | 40°13'37.283"N | 104°56'32.613"W | 10.00 | Niobrara B |
| 7117.00† | 40.973 | 269.572 | 7035.74 | -105.18 | -512.34 | 109.01 | 40°13'37.281"N | 104°56'32.905"W | 10.00 | |
| 7171.32† | 46.405 | 269.572 | 7075.00 | -67.68 | -512.62 | 71.51 | 40°13'37.278"N | 104°56'33.388"W | 10.00 | Niobrara C |
| 7217.00† | 50.973 | 269.572 | 7105.15 | -33.37 | -512.88 | 37.20 | 40°13'37.276"N | 104°56'33.830"W | 10.00 | |
| 7317.00† | 60.973 | 269.572 | 7161.04 | 49.40 | -513.49 | -45.57 | 40°13'37.270"N | 104°56'34.897"W | 10.00 | |
| 7417.00† | 70.973 | 269.572 | 7201.70 | 140.62 | -514.17 | -136.78 | 40°13'37.263"N | 104°56'36.073"W | 10.00 | |
| 7433.99† | 72.672 | 269.572 | 7207.00 | 156.76 | -514.29 | -152.92 | 40°13'37.262"N | 104°56'36.282"W | 10.00 | Fort Hays |



Planned Wellpath Report

KERBS 32C-14HZ (PERMIT REV-1)PWP

Page 4 of 8



REFERENCE WELLPATH IDENTIFICATION

| | | | |
|----------|---------------------------------|----------|-------------------------------------------------------|
| Operator | KERR-MCGEE OIL & GAS ONSHORE LP | Slot | SLOT#11 KERBS 32C-14HZ (1921' FNL & 313' FEL, SEC.13) |
| Area | COLORADO | Well | KERBS 32C-14HZ |
| Field | WELD COUNTY (KERR MCGEE) | Wellbore | KERBS 32C-14HZ PWB |
| Facility | SEC.13-T3N-R68W | | |

WELLPATH DATA (193 stations) † = interpolated/extrapolated station

| MD [ft] | Inclination [°] | Azimuth [°] | TVD [ft] | Vert Sect [ft] | North [ft] | East [ft] | Latitude | Longitude | DLS [°/100ft] | Comments |
|------------|--------------------|----------------|-------------|-------------------|---------------|--------------|----------------|-----------------|------------------|---------------|
| 7517.00† | 80.973 | 269.572 | 7225.91 | 237.51 | -514.90 | -233.68 | 40°13'37.256"N | 104°56'37.323"W | 10.00 | |
| 7531.50† | 82.423 | 269.572 | 7228.00 | 251.86 | -515.00 | -248.02 | 40°13'37.255"N | 104°56'37.508"W | 10.00 | Codell |
| 7606.40 | 89.913 | 269.572 | 7233.00 | 326.54 | -515.56 | -322.70 | 40°13'37.249"N | 104°56'38.470"W | 10.00 | LANDING POINT |
| 7617.00† | 89.913 | 269.572 | 7233.02 | 337.14 | -515.64 | -333.30 | 40°13'37.248"N | 104°56'38.607"W | 0.00 | |
| 7717.00† | 89.913 | 269.572 | 7233.17 | 437.14 | -516.39 | -433.30 | 40°13'37.241"N | 104°56'39.896"W | 0.00 | |
| 7817.00† | 89.913 | 269.572 | 7233.32 | 537.14 | -517.13 | -533.29 | 40°13'37.234"N | 104°56'41.185"W | 0.00 | |
| 7917.00† | 89.913 | 269.572 | 7233.47 | 637.14 | -517.88 | -633.29 | 40°13'37.226"N | 104°56'42.475"W | 0.00 | |
| 8017.00† | 89.913 | 269.572 | 7233.62 | 737.14 | -518.62 | -733.29 | 40°13'37.219"N | 104°56'43.764"W | 0.00 | |
| 8117.00† | 89.913 | 269.572 | 7233.78 | 837.14 | -519.37 | -833.28 | 40°13'37.211"N | 104°56'45.053"W | 0.00 | |
| 8217.00† | 89.913 | 269.572 | 7233.93 | 937.14 | -520.12 | -933.28 | 40°13'37.204"N | 104°56'46.342"W | 0.00 | |
| 8317.00† | 89.913 | 269.572 | 7234.08 | 1037.14 | -520.86 | -1033.28 | 40°13'37.197"N | 104°56'47.631"W | 0.00 | |
| 8417.00† | 89.913 | 269.572 | 7234.23 | 1137.14 | -521.61 | -1133.28 | 40°13'37.189"N | 104°56'48.921"W | 0.00 | |
| 8517.00† | 89.913 | 269.572 | 7234.38 | 1237.14 | -522.36 | -1233.27 | 40°13'37.182"N | 104°56'50.210"W | 0.00 | |
| 8617.00† | 89.913 | 269.572 | 7234.53 | 1337.14 | -523.10 | -1333.27 | 40°13'37.174"N | 104°56'51.499"W | 0.00 | |
| 8717.00† | 89.913 | 269.572 | 7234.68 | 1437.14 | -523.85 | -1433.27 | 40°13'37.167"N | 104°56'52.788"W | 0.00 | |
| 8817.00† | 89.913 | 269.572 | 7234.84 | 1537.14 | -524.59 | -1533.26 | 40°13'37.160"N | 104°56'54.078"W | 0.00 | |
| 8917.00† | 89.913 | 269.572 | 7234.99 | 1637.14 | -525.34 | -1633.26 | 40°13'37.152"N | 104°56'55.367"W | 0.00 | |
| 9017.00† | 89.913 | 269.572 | 7235.14 | 1737.14 | -526.09 | -1733.26 | 40°13'37.145"N | 104°56'56.656"W | 0.00 | |
| 9117.00† | 89.913 | 269.572 | 7235.29 | 1837.14 | -526.83 | -1833.26 | 40°13'37.137"N | 104°56'57.945"W | 0.00 | |
| 9217.00† | 89.913 | 269.572 | 7235.44 | 1937.14 | -527.58 | -1933.25 | 40°13'37.130"N | 104°56'59.234"W | 0.00 | |
| 9317.00† | 89.913 | 269.572 | 7235.59 | 2037.14 | -528.33 | -2033.25 | 40°13'37.122"N | 104°57'00.524"W | 0.00 | |
| 9417.00† | 89.913 | 269.572 | 7235.74 | 2137.14 | -529.07 | -2133.25 | 40°13'37.115"N | 104°57'01.813"W | 0.00 | |
| 9517.00† | 89.913 | 269.572 | 7235.90 | 2237.14 | -529.82 | -2233.24 | 40°13'37.107"N | 104°57'03.102"W | 0.00 | |
| 9617.00† | 89.913 | 269.572 | 7236.05 | 2337.14 | -530.56 | -2333.24 | 40°13'37.100"N | 104°57'04.391"W | 0.00 | |
| 9717.00† | 89.913 | 269.572 | 7236.20 | 2437.14 | -531.31 | -2433.24 | 40°13'37.092"N | 104°57'05.680"W | 0.00 | |
| 9817.00† | 89.913 | 269.572 | 7236.35 | 2537.14 | -532.06 | -2533.24 | 40°13'37.085"N | 104°57'06.970"W | 0.00 | |
| 9917.00† | 89.913 | 269.572 | 7236.50 | 2637.14 | -532.80 | -2633.23 | 40°13'37.078"N | 104°57'08.259"W | 0.00 | |
| 10017.00† | 89.913 | 269.572 | 7236.65 | 2737.14 | -533.55 | -2733.23 | 40°13'37.070"N | 104°57'09.548"W | 0.00 | |
| 10117.00† | 89.913 | 269.572 | 7236.80 | 2837.14 | -534.29 | -2833.23 | 40°13'37.063"N | 104°57'10.837"W | 0.00 | |
| 10217.00† | 89.913 | 269.572 | 7236.96 | 2937.14 | -535.04 | -2933.22 | 40°13'37.055"N | 104°57'12.126"W | 0.00 | |
| 10317.00† | 89.913 | 269.572 | 7237.11 | 3037.14 | -535.79 | -3033.22 | 40°13'37.048"N | 104°57'13.416"W | 0.00 | |
| 10417.00† | 89.913 | 269.572 | 7237.26 | 3137.14 | -536.53 | -3133.22 | 40°13'37.040"N | 104°57'14.705"W | 0.00 | |
| 10517.00† | 89.913 | 269.572 | 7237.41 | 3237.14 | -537.28 | -3233.22 | 40°13'37.033"N | 104°57'15.994"W | 0.00 | |
| 10617.00† | 89.913 | 269.572 | 7237.56 | 3337.14 | -538.03 | -3333.21 | 40°13'37.025"N | 104°57'17.283"W | 0.00 | |
| 10717.00† | 89.913 | 269.572 | 7237.71 | 3437.14 | -538.77 | -3433.21 | 40°13'37.018"N | 104°57'18.572"W | 0.00 | |
| 10817.00† | 89.913 | 269.572 | 7237.86 | 3537.14 | -539.52 | -3533.21 | 40°13'37.010"N | 104°57'19.862"W | 0.00 | |
| 10917.00† | 89.913 | 269.572 | 7238.01 | 3637.14 | -540.26 | -3633.20 | 40°13'37.003"N | 104°57'21.151"W | 0.00 | |
| 11017.00† | 89.913 | 269.572 | 7238.17 | 3737.14 | -541.01 | -3733.20 | 40°13'36.995"N | 104°57'22.440"W | 0.00 | |
| 11117.00† | 89.913 | 269.572 | 7238.32 | 3837.14 | -541.76 | -3833.20 | 40°13'36.987"N | 104°57'23.729"W | 0.00 | |
| 11217.00† | 89.913 | 269.572 | 7238.47 | 3937.14 | -542.50 | -3933.19 | 40°13'36.980"N | 104°57'25.018"W | 0.00 | |
| 11317.00† | 89.913 | 269.572 | 7238.62 | 4037.14 | -543.25 | -4033.19 | 40°13'36.972"N | 104°57'26.308"W | 0.00 | |
| 11417.00† | 89.913 | 269.572 | 7238.77 | 4137.14 | -543.99 | -4133.19 | 40°13'36.965"N | 104°57'27.597"W | 0.00 | |
| 11517.00† | 89.913 | 269.572 | 7238.92 | 4237.14 | -544.74 | -4233.19 | 40°13'36.957"N | 104°57'28.886"W | 0.00 | |
| 11617.00† | 89.913 | 269.572 | 7239.07 | 4337.14 | -545.49 | -4333.18 | 40°13'36.950"N | 104°57'30.175"W | 0.00 | |
| 11717.00† | 89.913 | 269.572 | 7239.23 | 4437.14 | -546.23 | -4433.18 | 40°13'36.942"N | 104°57'31.464"W | 0.00 | |



Planned Wellpath Report

KERBS 32C-14HZ (PERMIT REV-1)PWP

Page 5 of 8



REFERENCE WELLPATH IDENTIFICATION

| | | | |
|----------|---------------------------------|----------|-------------------------------------------------------|
| Operator | KERR-MCGEE OIL & GAS ONSHORE LP | Slot | SLOT#11 KERBS 32C-14HZ (1921' FNL & 313' FEL, SEC.13) |
| Area | COLORADO | Well | KERBS 32C-14HZ |
| Field | WELD COUNTY (KERR MCGEE) | Wellbore | KERBS 32C-14HZ PWB |
| Facility | SEC.13-T3N-R68W | | |

WELLPATH DATA (193 stations) † = interpolated/extrapolated station

| MD [ft] | Inclination [°] | Azimuth [°] | TVD [ft] | Vert Sect [ft] | North [ft] | East [ft] | Latitude | Longitude | DLS [°/100ft] | Comments |
|------------|--------------------|----------------|-------------|-------------------|---------------|--------------|----------------|-----------------|------------------|----------|
| 11817.00† | 89.913 | 269.572 | 7239.38 | 4537.14 | -546.98 | -4533.18 | 40°13'36.935"N | 104°57'32.754"W | 0.00 | |
| 11917.00† | 89.913 | 269.572 | 7239.53 | 4637.14 | -547.73 | -4633.17 | 40°13'36.927"N | 104°57'34.043"W | 0.00 | |
| 12017.00† | 89.913 | 269.572 | 7239.68 | 4737.14 | -548.47 | -4733.17 | 40°13'36.920"N | 104°57'35.332"W | 0.00 | |
| 12117.00† | 89.913 | 269.572 | 7239.83 | 4837.14 | -549.22 | -4833.17 | 40°13'36.912"N | 104°57'36.621"W | 0.00 | |
| 12217.00† | 89.913 | 269.572 | 7239.98 | 4937.14 | -549.96 | -4933.17 | 40°13'36.904"N | 104°57'37.910"W | 0.00 | |
| 12317.00† | 89.913 | 269.572 | 7240.13 | 5037.14 | -550.71 | -5033.16 | 40°13'36.897"N | 104°57'39.200"W | 0.00 | |
| 12417.00† | 89.913 | 269.572 | 7240.29 | 5137.14 | -551.46 | -5133.16 | 40°13'36.889"N | 104°57'40.489"W | 0.00 | |
| 12517.00† | 89.913 | 269.572 | 7240.44 | 5237.14 | -552.20 | -5233.16 | 40°13'36.882"N | 104°57'41.778"W | 0.00 | |
| 12617.00† | 89.913 | 269.572 | 7240.59 | 5337.14 | -552.95 | -5333.15 | 40°13'36.874"N | 104°57'43.067"W | 0.00 | |
| 12717.00† | 89.913 | 269.572 | 7240.74 | 5437.14 | -553.69 | -5433.15 | 40°13'36.867"N | 104°57'44.356"W | 0.00 | |
| 12817.00† | 89.913 | 269.572 | 7240.89 | 5537.14 | -554.44 | -5533.15 | 40°13'36.859"N | 104°57'45.646"W | 0.00 | |
| 12917.00† | 89.913 | 269.572 | 7241.04 | 5637.14 | -555.19 | -5633.15 | 40°13'36.851"N | 104°57'46.935"W | 0.00 | |
| 13017.00† | 89.913 | 269.572 | 7241.19 | 5737.14 | -555.93 | -5733.14 | 40°13'36.844"N | 104°57'48.224"W | 0.00 | |
| 13117.00† | 89.913 | 269.572 | 7241.35 | 5837.14 | -556.68 | -5833.14 | 40°13'36.836"N | 104°57'49.513"W | 0.00 | |
| 13217.00† | 89.913 | 269.572 | 7241.50 | 5937.14 | -557.43 | -5933.14 | 40°13'36.829"N | 104°57'50.802"W | 0.00 | |
| 13317.00† | 89.913 | 269.572 | 7241.65 | 6037.14 | -558.17 | -6033.13 | 40°13'36.821"N | 104°57'52.092"W | 0.00 | |
| 13417.00† | 89.913 | 269.572 | 7241.80 | 6137.14 | -558.92 | -6133.13 | 40°13'36.813"N | 104°57'53.381"W | 0.00 | |
| 13517.00† | 89.913 | 269.572 | 7241.95 | 6237.14 | -559.66 | -6233.13 | 40°13'36.806"N | 104°57'54.670"W | 0.00 | |
| 13617.00† | 89.913 | 269.572 | 7242.10 | 6337.13 | -560.41 | -6333.13 | 40°13'36.798"N | 104°57'55.959"W | 0.00 | |
| 13717.00† | 89.913 | 269.572 | 7242.25 | 6437.13 | -561.16 | -6433.12 | 40°13'36.790"N | 104°57'57.248"W | 0.00 | |
| 13817.00† | 89.913 | 269.572 | 7242.41 | 6537.13 | -561.90 | -6533.12 | 40°13'36.783"N | 104°57'58.538"W | 0.00 | |
| 13917.00† | 89.913 | 269.572 | 7242.56 | 6637.13 | -562.65 | -6633.12 | 40°13'36.775"N | 104°57'59.827"W | 0.00 | |
| 14017.00† | 89.913 | 269.572 | 7242.71 | 6737.13 | -563.40 | -6733.11 | 40°13'36.768"N | 104°58'01.116"W | 0.00 | |
| 14117.00† | 89.913 | 269.572 | 7242.86 | 6837.13 | -564.14 | -6833.11 | 40°13'36.760"N | 104°58'02.405"W | 0.00 | |
| 14217.00† | 89.913 | 269.572 | 7243.01 | 6937.13 | -564.89 | -6933.11 | 40°13'36.752"N | 104°58'03.694"W | 0.00 | |
| 14317.00† | 89.913 | 269.572 | 7243.16 | 7037.13 | -565.63 | -7033.11 | 40°13'36.745"N | 104°58'04.984"W | 0.00 | |
| 14417.00† | 89.913 | 269.572 | 7243.31 | 7137.13 | -566.38 | -7133.10 | 40°13'36.737"N | 104°58'06.273"W | 0.00 | |
| 14517.00† | 89.913 | 269.572 | 7243.47 | 7237.13 | -567.13 | -7233.10 | 40°13'36.729"N | 104°58'07.562"W | 0.00 | |
| 14617.00† | 89.913 | 269.572 | 7243.62 | 7337.13 | -567.87 | -7333.10 | 40°13'36.722"N | 104°58'08.851"W | 0.00 | |
| 14717.00† | 89.913 | 269.572 | 7243.77 | 7437.13 | -568.62 | -7433.09 | 40°13'36.714"N | 104°58'10.140"W | 0.00 | |
| 14817.00† | 89.913 | 269.572 | 7243.92 | 7537.13 | -569.36 | -7533.09 | 40°13'36.706"N | 104°58'11.430"W | 0.00 | |
| 14917.00† | 89.913 | 269.572 | 7244.07 | 7637.13 | -570.11 | -7633.09 | 40°13'36.699"N | 104°58'12.719"W | 0.00 | |
| 15017.00† | 89.913 | 269.572 | 7244.22 | 7737.13 | -570.86 | -7733.08 | 40°13'36.691"N | 104°58'14.008"W | 0.00 | |
| 15117.00† | 89.913 | 269.572 | 7244.37 | 7837.13 | -571.60 | -7833.08 | 40°13'36.683"N | 104°58'15.297"W | 0.00 | |
| 15217.00† | 89.913 | 269.572 | 7244.53 | 7937.13 | -572.35 | -7933.08 | 40°13'36.676"N | 104°58'16.586"W | 0.00 | |
| 15317.00† | 89.913 | 269.572 | 7244.68 | 8037.13 | -573.10 | -8033.08 | 40°13'36.668"N | 104°58'17.876"W | 0.00 | |
| 15417.00† | 89.913 | 269.572 | 7244.83 | 8137.13 | -573.84 | -8133.07 | 40°13'36.660"N | 104°58'19.165"W | 0.00 | |
| 15517.00† | 89.913 | 269.572 | 7244.98 | 8237.13 | -574.59 | -8233.07 | 40°13'36.652"N | 104°58'20.454"W | 0.00 | |
| 15617.00† | 89.913 | 269.572 | 7245.13 | 8337.13 | -575.33 | -8333.07 | 40°13'36.645"N | 104°58'21.743"W | 0.00 | |
| 15717.00† | 89.913 | 269.572 | 7245.28 | 8437.13 | -576.08 | -8433.06 | 40°13'36.637"N | 104°58'23.032"W | 0.00 | |
| 15817.00† | 89.913 | 269.572 | 7245.43 | 8537.13 | -576.83 | -8533.06 | 40°13'36.629"N | 104°58'24.322"W | 0.00 | |
| 15917.00† | 89.913 | 269.572 | 7245.59 | 8637.13 | -577.57 | -8633.06 | 40°13'36.622"N | 104°58'25.611"W | 0.00 | |
| 16017.00† | 89.913 | 269.572 | 7245.74 | 8737.13 | -578.32 | -8733.06 | 40°13'36.614"N | 104°58'26.900"W | 0.00 | |
| 16117.00† | 89.913 | 269.572 | 7245.89 | 8837.13 | -579.06 | -8833.05 | 40°13'36.606"N | 104°58'28.189"W | 0.00 | |
| 16217.00† | 89.913 | 269.572 | 7246.04 | 8937.13 | -579.81 | -8933.05 | 40°13'36.598"N | 104°58'29.478"W | 0.00 | |



Planned Wellpath Report

KERBS 32C-14HZ (PERMIT REV-1)PWP

Page 6 of 8



REFERENCE WELLPATH IDENTIFICATION

| | | | |
|----------|---------------------------------|----------|-------------------------------------------------------|
| Operator | KERR-MCGEE OIL & GAS ONSHORE LP | Slot | SLOT#11 KERBS 32C-14HZ (1921' FNL & 313' FEL, SEC.13) |
| Area | COLORADO | Well | KERBS 32C-14HZ |
| Field | WELD COUNTY (KERR MCGEE) | Wellbore | KERBS 32C-14HZ PWB |
| Facility | SEC.13-T3N-R68W | | |

WELLPATH DATA (193 stations) † = interpolated/extrapolated station

| MD [ft] | Inclination [°] | Azimuth [°] | TVD [ft] | Vert Sect [ft] | North [ft] | East [ft] | Latitude | Longitude | DLS [°/100ft] | Comments |
|-----------|-----------------|-------------|----------------------|----------------|------------|-----------|----------------|-----------------|---------------|-------------|
| 16317.00† | 89.913 | 269.572 | 7246.19 | 9037.13 | -580.56 | -9033.05 | 40°13'36.591"N | 104°58'30.768"W | 0.00 | |
| 16417.00† | 89.913 | 269.572 | 7246.34 | 9137.13 | -581.30 | -9133.04 | 40°13'36.583"N | 104°58'32.057"W | 0.00 | |
| 16517.00† | 89.913 | 269.572 | 7246.49 | 9237.13 | -582.05 | -9233.04 | 40°13'36.575"N | 104°58'33.346"W | 0.00 | |
| 16617.00† | 89.913 | 269.572 | 7246.65 | 9337.13 | -582.80 | -9333.04 | 40°13'36.567"N | 104°58'34.635"W | 0.00 | |
| 16717.00† | 89.913 | 269.572 | 7246.80 | 9437.13 | -583.54 | -9433.04 | 40°13'36.560"N | 104°58'35.924"W | 0.00 | |
| 16817.00† | 89.913 | 269.572 | 7246.95 | 9537.13 | -584.29 | -9533.03 | 40°13'36.552"N | 104°58'37.214"W | 0.00 | |
| 16917.00† | 89.913 | 269.572 | 7247.10 | 9637.13 | -585.03 | -9633.03 | 40°13'36.544"N | 104°58'38.503"W | 0.00 | |
| 17017.00† | 89.913 | 269.572 | 7247.25 | 9737.13 | -585.78 | -9733.03 | 40°13'36.536"N | 104°58'39.792"W | 0.00 | |
| 17117.00† | 89.913 | 269.572 | 7247.40 | 9837.13 | -586.53 | -9833.02 | 40°13'36.529"N | 104°58'41.081"W | 0.00 | |
| 17217.00† | 89.913 | 269.572 | 7247.55 | 9937.13 | -587.27 | -9933.02 | 40°13'36.521"N | 104°58'42.370"W | 0.00 | |
| 17317.00† | 89.913 | 269.572 | 7247.71 | 10037.13 | -588.02 | -10033.02 | 40°13'36.513"N | 104°58'43.660"W | 0.00 | |
| 17417.00† | 89.913 | 269.572 | 7247.86 | 10137.13 | -588.76 | -10133.02 | 40°13'36.505"N | 104°58'44.949"W | 0.00 | |
| 17511.82 | 89.913 | 269.572 | 7248.00 [†] | 10231.95 | -589.47 | -10227.83 | 40°13'36.498"N | 104°58'46.171"W | 0.00 | TOTAL DEPTH |

HOLE & CASING SECTIONS - Ref Wellbore: KERBS 32C-14HZ PWB Ref Wellpath: KERBS 32C-14HZ (PERMIT REV-1)PWP

| String/Diameter | Start MD [ft] | End MD [ft] | Interval [ft] | Start TVD [ft] | End TVD [ft] | Start N/S [ft] | Start E/W [ft] | End N/S [ft] | End E/W [ft] |
|-------------------------|---------------|-------------|---------------|----------------|--------------|----------------|----------------|--------------|--------------|
| 13.5in Open Hole | 17.00 | 1000.00 | 983.00 | 17.00 | 1000.00 | 0.00 | 0.00 | 0.00 | 0.00 |
| 9.625in Casing Surface | 17.00 | 1000.00 | 983.00 | 17.00 | 1000.00 | 0.00 | 0.00 | 0.00 | 0.00 |
| 8.75in Open Hole | 1000.00 | 7606.40 | 6606.40 | 1000.00 | 7233.00 | 0.00 | 0.00 | -515.56 | -322.70 |
| 7in Casing Intermediate | 17.00 | 7606.40 | 7589.40 | 17.00 | 7233.00 | 0.00 | 0.00 | -515.56 | -322.70 |
| 6.125in Open Hole | 7606.40 | 17511.82 | 9905.42 | 7233.00 | 7248.00 | -515.56 | -322.70 | -589.47 | -10227.83 |
| 4.5in Casing Production | 17.00 | 17511.82 | 17494.82 | 17.00 | 7248.00 | 0.00 | 0.00 | -589.47 | -10227.83 |



Planned Wellpath Report

KERBS 32C-14HZ (PERMIT REV-1)PWP

Page 7 of 8



| REFERENCE WELLPATH IDENTIFICATION | | | |
|-----------------------------------|---------------------------------|----------|-------------------------------------------------------|
| Operator | KERR-MCGEE OIL & GAS ONSHORE LP | Slot | SLOT#11 KERBS 32C-14HZ (1921' FNL & 313' FEL, SEC.13) |
| Area | COLORADO | Well | KERBS 32C-14HZ |
| Field | WELD COUNTY (KERR MCGEE) | Wellbore | KERBS 32C-14HZ PWB |
| Facility | SEC.13-T3N-R68W | | |

| TARGETS | | | | | | | | | |
|--------------------------------------------------------------------|----------|----------|------------|-----------|-------------------|--------------------|----------------|-----------------|---------|
| Name | MD [ft] | TVD [ft] | North [ft] | East [ft] | Grid East [US ft] | Grid North [US ft] | Latitude | Longitude | Shape |
| SEC.13-T3N-R68W HARD LINES (460' SETBACKS) | | 4890.00 | 1001.83 | -307.76 | 3155245.81 | 1327547.17 | 40°13'52.244"N | 104°56'38.278"W | polygon |
| SEC.13-T3N-R68W SECTION LINES | | 4890.00 | 1001.83 | -307.76 | 3155245.81 | 1327547.17 | 40°13'52.244"N | 104°56'38.278"W | polygon |
| SEC.14-T3N-R68W HARD LINES (460' SETBACKS) | | 4890.00 | 1001.83 | -307.76 | 3155245.81 | 1327547.17 | 40°13'52.244"N | 104°56'38.278"W | polygon |
| SEC.14-T3N-R68W SECTION LINES | | 4890.00 | 1001.83 | -307.76 | 3155245.81 | 1327547.17 | 40°13'52.244"N | 104°56'38.278"W | polygon |
| 1) KERBS 32C-14HZ BHL ON PLAT (2430' FNL & 50' FWL, SEC. 14) REV-1 | 17511.82 | 7248.00 | -589.47 | -10227.83 | 3145336.38 | 1325893.64 | 40°13'36.498"N | 104°58'46.171"W | point |

| SURVEY PROGRAM - Ref Wellbore: KERBS 32C-14HZ PWB Ref Wellpath: KERBS 32C-14HZ (PERMIT REV-1)PWP | | | | |
|--------------------------------------------------------------------------------------------------|-------------|------------------------------|------------------|--------------------|
| Start MD [ft] | End MD [ft] | Positional Uncertainty Model | Log Name/Comment | Wellbore |
| 17.00 | 7606.40 | NaviTrak (Standard) | | KERBS 32C-14HZ PWB |
| 7606.40 | 17511.82 | OnTrak (Standard) | | KERBS 32C-14HZ PWB |



Planned Wellpath Report

KERBS 32C-14HZ (PERMIT REV-1)PWP

Page 8 of 8



| REFERENCE WELLPATH IDENTIFICATION | | | |
|-----------------------------------|---------------------------------|----------|-------------------------------------------------------|
| Operator | KERR-MCGEE OIL & GAS ONSHORE LP | Slot | SLOT#11 KERBS 32C-14HZ (1921' FNL & 313' FEL, SEC.13) |
| Area | COLORADO | Well | KERBS 32C-14HZ |
| Field | WELD COUNTY (KERR MCGEE) | Wellbore | KERBS 32C-14HZ PWB |
| Facility | SEC.13-T3N-R68W | | |

| WELLPATH COMMENTS | | | | |
|-------------------|--------------------|----------------|-------------|------------------|
| MD [ft] | Inclination [°] | Azimuth [°] | TVD [ft] | Comment |
| 938.00 | 0.000 | 154.000 | 938.00 | Fox Hills Base |
| 3636.47 | 10.000 | 154.000 | 3603.00 | Parkman |
| 4120.83 | 10.000 | 154.000 | 4080.00 | Sussex |
| 6607.27 | 0.000 | 269.572 | 6560.05 | 4 1/2" LINER TOP |
| 6953.76 | 24.649 | 269.572 | 6899.00 | Sharon Springs |
| 7022.95 | 31.569 | 269.572 | 6960.00 | Niobrara A |
| 7081.21 | 37.394 | 269.572 | 7008.00 | Niobrara B |
| 7171.32 | 46.405 | 269.572 | 7075.00 | Niobrara C |
| 7433.99 | 72.672 | 269.572 | 7207.00 | Fort Hays |
| 7531.50 | 82.423 | 269.572 | 7228.00 | Codell |

| DESIGN COMMENTS | | | | |
|-----------------|--------------------|----------------|-------------|-----------------------|
| MD [ft] | Inclination [°] | Azimuth [°] | TVD [ft] | Comment |
| 17.00 | 0.000 | 154.000 | 17.00 | TIE-ON |
| 1100.00 | 0.000 | 154.000 | 1100.00 | BEGIN NUDGE |
| 1600.00 | 10.000 | 154.000 | 1597.47 | END NUDGE |
| 4374.69 | 10.000 | 154.000 | 4330.00 | BEGIN DROP |
| 4874.69 | 0.000 | 269.572 | 4827.47 | END DROP |
| 6707.27 | 0.000 | 269.572 | 6660.05 | KOP, BUILD @ 10°/100' |
| 7606.40 | 89.913 | 269.572 | 7233.00 | LANDING POINT |
| 17511.82 | 89.913 | 269.572 | 7248.00 | TOTAL DEPTH |