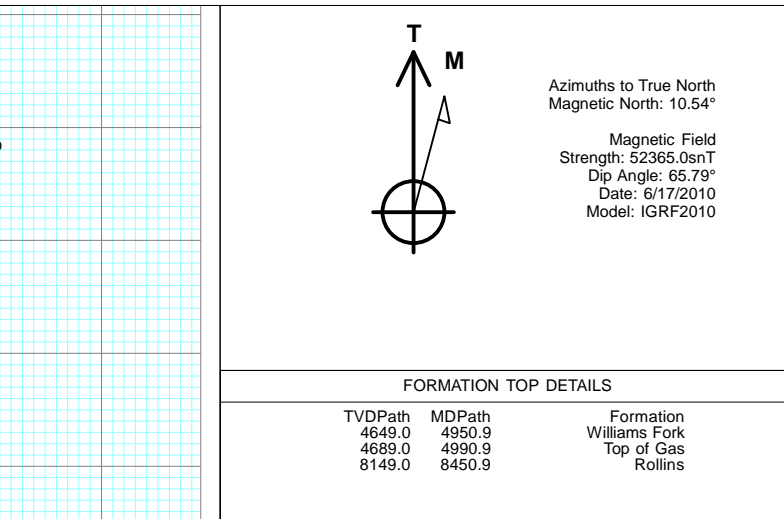
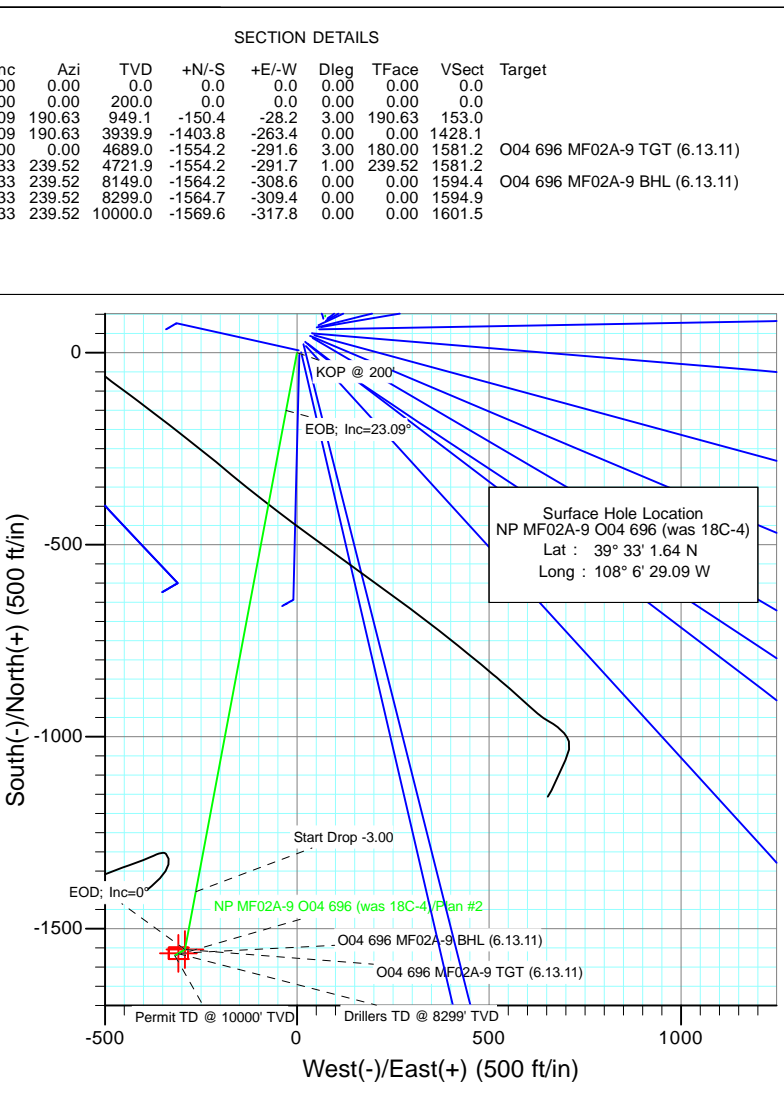
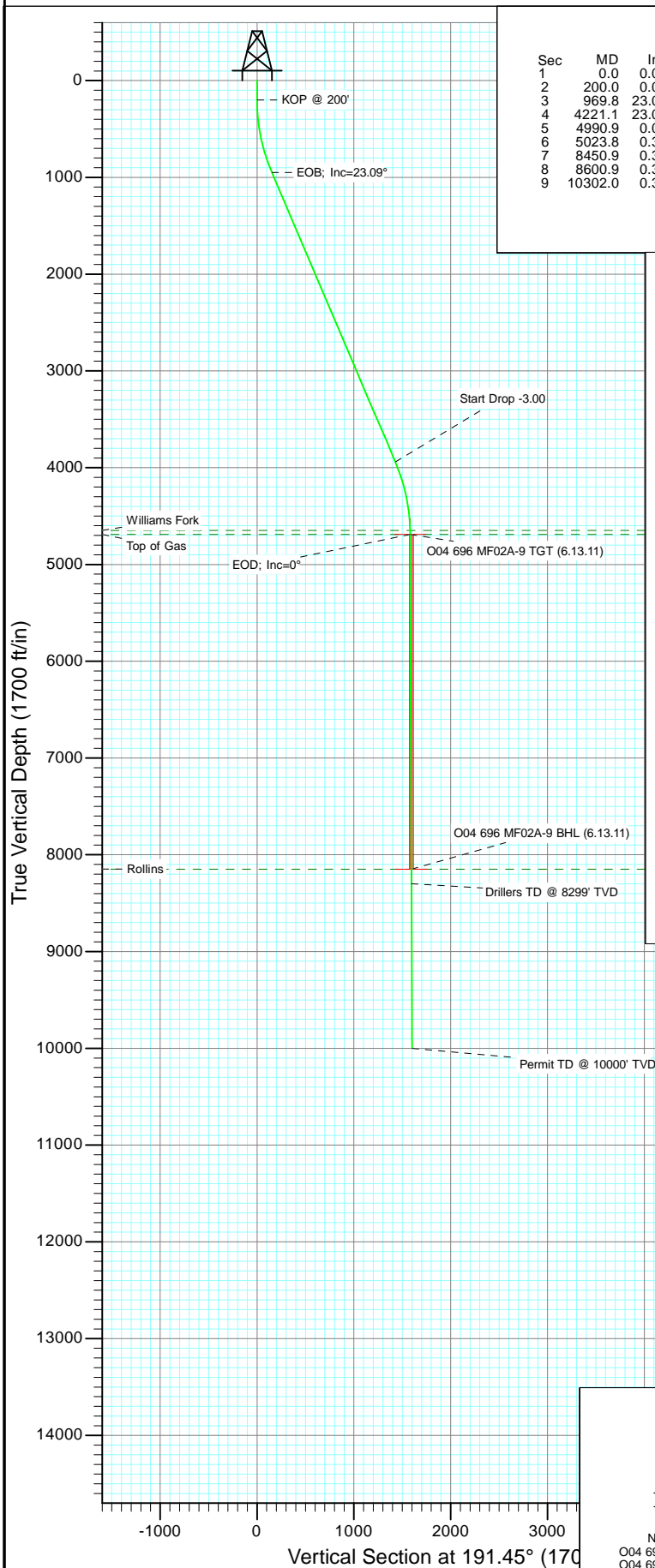




Project: North Piceance
Site: O04 696 (3rd)
Well: NP MF02A-9 O04 696 (was 18C-4)
Wellbore: DD
Design: Plan #2



Plan #2 NP MF02A-9 O04 696 (was 18C-4) 95xxx; LR KB MF18C-4 @ 6044.0ft (Original Well Elev) North American Datum 1983 Well NP MF02A-9 O04 696 (was 18C-4), True North							
Type TD	Target No Target (Freehand)	Azimuth 191.45	Origin Type Slot	N/S 0.0	E/W 0.0	From TVD 0.0	
Name	TVD	+N/-S	+E/-W	Latitude	Longitude		
O04 696 MF02A-9 TGT (6.13.11)	4689.0	-1554.2	-291.6	39° 32' 46.28 N	108° 6' 32.81 W		
O04 696 MF02A-9 BHL (6.13.11)	8149.0	-1564.2	-308.6	39° 32' 46.18 N	108° 6' 33.03 W		

Planning Report

Database:	USA EDM 5000 US Multi Users DB	Local Co-ordinate Reference:	Well NP MF02A-9 O04 696 (was 18C-4)
Company:	EnCana Oil & Gas (USA) Inc	TVD Reference:	KB MF18C-4 @ 6044.0ft (Original Well Elev)
Project:	North Piceance	MD Reference:	KB MF18C-4 @ 6044.0ft (Original Well Elev)
Site:	O04 696 (3rd)	North Reference:	True
Well:	NP MF02A-9 O04 696 (was 18C-4)	Survey Calculation Method:	Minimum Curvature
Wellbore:	DD		
Design:	Plan #2		

Project	North Piceance		
Map System:	US State Plane 1983	System Datum:	Mean Sea Level
Geo Datum:	North American Datum 1983		
Map Zone:	Colorado Central Zone		

Site	O04 696 (3rd)			
Site Position:		Northing:	1,635,941.08 ft	Latitude: 39° 33' 1.64 N
From:	Lat/Long	Easting:	2,264,673.43 ft	Longitude: 108° 6' 29.09 W
Position Uncertainty:	0.0 ft	Slot Radius:	13.200 in	Grid Convergence: -1.64 °

Well	NP MF02A-9 O04 696 (was 18C-4)			
Well Position	+N/-S	0.0 ft	Northing:	1,635,941.07 ft
	+E/-W	0.0 ft	Easting:	2,264,673.43 ft
Position Uncertainty		0.0 ft	Wellhead Elevation:	ft
			Ground Level:	6,022.0 ft

Wellbore	DD				
Magnetics	Model Name	Sample Date	Declination (°)	Dip Angle (°)	Field Strength (nT)
	IGRF2010	6/17/2010	10.54	65.79	52,365

Design	Plan #2			
Audit Notes:				
Version:	Phase:	PLAN	Tie On Depth:	0.0
Vertical Section:	Depth From (TVD) (ft)	+N/-S (ft)	+E/-W (ft)	Direction (°)
	0.0	0.0	0.0	191.45

Plan Sections										
Measured Depth (ft)	Inclination (°)	Azimuth (°)	Vertical Depth (ft)	+N/-S (ft)	+E/-W (ft)	Dogleg Rate (°/100ft)	Build Rate (°/100ft)	Turn Rate (°/100ft)	TFO (°)	Target
0.0	0.00	0.00	0.0	0.0	0.0	0.00	0.00	0.00	0.00	
200.0	0.00	0.00	200.0	0.0	0.0	0.00	0.00	0.00	0.00	
969.8	23.09	190.63	949.1	-150.4	-28.2	3.00	3.00	0.00	190.63	
4,221.1	23.09	190.63	3,939.9	-1,403.8	-263.4	0.00	0.00	0.00	0.00	
4,990.9	0.00	0.00	4,689.0	-1,554.2	-291.6	3.00	-3.00	0.00	180.00	O04 696 MF02A-9 TC
5,023.8	0.33	239.52	4,721.9	-1,554.2	-291.7	1.00	1.00	-366.37	239.52	
8,450.9	0.33	239.52	8,149.0	-1,564.2	-308.6	0.00	0.00	0.00	0.00	O04 696 MF02A-9 B+
8,600.9	0.33	239.52	8,299.0	-1,564.7	-309.4	0.00	0.00	0.00	0.00	
10,302.0	0.33	239.52	10,000.0	-1,569.6	-317.8	0.00	0.00	0.00	0.00	

Planning Report

Database: USA EDM 5000 US Multi Users DB
Company: EnCana Oil & Gas (USA) Inc
Project: North Piceance
Site: O04 696 (3rd)
Well: NP MF02A-9 O04 696 (was 18C-4)
Wellbore: DD
Design: Plan #2

Local Co-ordinate Reference:
TVD Reference:
MD Reference:
North Reference:
Survey Calculation Method:

Well NP MF02A-9 O04 696 (was 18C-4)
 KB MF18C-4 @ 6044.0ft (Original Well Elev)
 KB MF18C-4 @ 6044.0ft (Original Well Elev)
 True
 Minimum Curvature

Planned Survey

Measured Depth (ft)	Inclination (°)	Azimuth (°)	Vertical Depth (ft)	+N/-S (ft)	+E/-W (ft)	Vertical Section (ft)	Dogleg Rate (°/100ft)	Build Rate (°/100ft)	Comments / Formations
0.0	0.00	0.00	0.0	0.0	0.0	0.0	0.00	0.00	
30.0	0.00	0.00	30.0	0.0	0.0	0.0	0.00	0.00	
60.0	0.00	0.00	60.0	0.0	0.0	0.0	0.00	0.00	
90.0	0.00	0.00	90.0	0.0	0.0	0.0	0.00	0.00	
120.0	0.00	0.00	120.0	0.0	0.0	0.0	0.00	0.00	
150.0	0.00	0.00	150.0	0.0	0.0	0.0	0.00	0.00	
180.0	0.00	0.00	180.0	0.0	0.0	0.0	0.00	0.00	
200.0	0.00	0.00	200.0	0.0	0.0	0.0	0.00	0.00	KOP @ 200'
210.0	0.30	190.63	210.0	0.0	0.0	0.0	3.00	3.00	
240.0	1.20	190.63	240.0	-0.4	-0.1	0.4	3.00	3.00	
270.0	2.10	190.63	270.0	-1.3	-0.2	1.3	3.00	3.00	
300.0	3.00	190.63	300.0	-2.6	-0.5	2.6	3.00	3.00	
330.0	3.90	190.63	329.9	-4.3	-0.8	4.4	3.00	3.00	
360.0	4.80	190.63	359.8	-6.6	-1.2	6.7	3.00	3.00	
390.0	5.70	190.63	389.7	-9.3	-1.7	9.4	3.00	3.00	
420.0	6.60	190.63	419.5	-12.4	-2.3	12.7	3.00	3.00	
450.0	7.50	190.63	449.3	-16.1	-3.0	16.3	3.00	3.00	
480.0	8.40	190.63	479.0	-20.1	-3.8	20.5	3.00	3.00	
510.0	9.30	190.63	508.6	-24.7	-4.6	25.1	3.00	3.00	
540.0	10.20	190.63	538.2	-29.7	-5.6	30.2	3.00	3.00	
570.0	11.10	190.63	567.7	-35.1	-6.6	35.7	3.00	3.00	
600.0	12.00	190.63	597.1	-41.0	-7.7	41.7	3.00	3.00	
630.0	12.90	190.63	626.4	-47.4	-8.9	48.2	3.00	3.00	
660.0	13.80	190.63	655.6	-54.2	-10.2	55.1	3.00	3.00	
690.0	14.70	190.63	684.6	-61.4	-11.5	62.5	3.00	3.00	
720.0	15.60	190.63	713.6	-69.1	-13.0	70.3	3.00	3.00	
750.0	16.50	190.63	742.4	-77.3	-14.5	78.6	3.00	3.00	
780.0	17.40	190.63	771.1	-85.9	-16.1	87.4	3.00	3.00	
810.0	18.30	190.63	799.7	-94.9	-17.8	96.6	3.00	3.00	
840.0	19.20	190.63	828.1	-104.4	-19.6	106.2	3.00	3.00	
870.0	20.10	190.63	856.3	-114.3	-21.5	116.3	3.00	3.00	
900.0	21.00	190.63	884.4	-124.7	-23.4	126.8	3.00	3.00	
930.0	21.90	190.63	912.4	-135.5	-25.4	137.8	3.00	3.00	
960.0	22.80	190.63	940.1	-146.7	-27.5	149.2	3.00	3.00	
969.8	23.09	190.63	949.1	-150.4	-28.2	153.0	3.00	3.00	EOB; Inc=23.09°
990.0	23.09	190.63	967.7	-158.2	-29.7	161.0	0.00	0.00	
1,020.0	23.09	190.63	995.3	-169.8	-31.9	172.7	0.00	0.00	
1,050.0	23.09	190.63	1,022.9	-181.3	-34.0	184.5	0.00	0.00	
1,080.0	23.09	190.63	1,050.5	-192.9	-36.2	196.3	0.00	0.00	
1,110.0	23.09	190.63	1,078.1	-204.5	-38.4	208.0	0.00	0.00	
1,140.0	23.09	190.63	1,105.7	-216.0	-40.5	219.8	0.00	0.00	
1,170.0	23.09	190.63	1,133.3	-227.6	-42.7	231.6	0.00	0.00	
1,200.0	23.09	190.63	1,160.9	-239.2	-44.9	243.3	0.00	0.00	
1,230.0	23.09	190.63	1,188.5	-250.7	-47.0	255.1	0.00	0.00	
1,260.0	23.09	190.63	1,216.1	-262.3	-49.2	266.8	0.00	0.00	
1,290.0	23.09	190.63	1,243.7	-273.9	-51.4	278.6	0.00	0.00	
1,320.0	23.09	190.63	1,271.3	-285.4	-53.6	290.4	0.00	0.00	
1,350.0	23.09	190.63	1,298.9	-297.0	-55.7	302.1	0.00	0.00	
1,380.0	23.09	190.63	1,326.5	-308.6	-57.9	313.9	0.00	0.00	
1,410.0	23.09	190.63	1,354.1	-320.1	-60.1	325.7	0.00	0.00	
1,440.0	23.09	190.63	1,381.6	-331.7	-62.2	337.4	0.00	0.00	
1,470.0	23.09	190.63	1,409.2	-343.3	-64.4	349.2	0.00	0.00	

Planning Report

Database: USA EDM 5000 US Multi Users DB
Company: EnCana Oil & Gas (USA) Inc
Project: North Piceance
Site: O04 696 (3rd)
Well: NP MF02A-9 O04 696 (was 18C-4)
Wellbore: DD
Design: Plan #2

Local Co-ordinate Reference:
TVD Reference:
MD Reference:
North Reference:
Survey Calculation Method:

Well NP MF02A-9 O04 696 (was 18C-4)
 KB MF18C-4 @ 6044.0ft (Original Well Elev)
 KB MF18C-4 @ 6044.0ft (Original Well Elev)
 True
 Minimum Curvature

Planned Survey

Measured Depth (ft)	Inclination (°)	Azimuth (°)	Vertical Depth (ft)	+N/-S (ft)	+E/-W (ft)	Vertical Section (ft)	Dogleg Rate (°/100ft)	Build Rate (°/100ft)	Comments / Formations
1,500.0	23.09	190.63	1,436.8	-354.8	-66.6	361.0	0.00	0.00	
1,530.0	23.09	190.63	1,464.4	-366.4	-68.7	372.7	0.00	0.00	
1,560.0	23.09	190.63	1,492.0	-377.9	-70.9	384.5	0.00	0.00	
1,590.0	23.09	190.63	1,519.6	-389.5	-73.1	396.3	0.00	0.00	
1,620.0	23.09	190.63	1,547.2	-401.1	-75.2	408.0	0.00	0.00	
1,650.0	23.09	190.63	1,574.8	-412.6	-77.4	419.8	0.00	0.00	
1,680.0	23.09	190.63	1,602.4	-424.2	-79.6	431.6	0.00	0.00	
1,710.0	23.09	190.63	1,630.0	-435.8	-81.8	443.3	0.00	0.00	
1,740.0	23.09	190.63	1,657.6	-447.3	-83.9	455.1	0.00	0.00	
1,770.0	23.09	190.63	1,685.2	-458.9	-86.1	466.9	0.00	0.00	
1,800.0	23.09	190.63	1,712.8	-470.5	-88.3	478.6	0.00	0.00	
1,830.0	23.09	190.63	1,740.4	-482.0	-90.4	490.4	0.00	0.00	
1,860.0	23.09	190.63	1,768.0	-493.6	-92.6	502.2	0.00	0.00	
1,890.0	23.09	190.63	1,795.6	-505.2	-94.8	513.9	0.00	0.00	
1,920.0	23.09	190.63	1,823.2	-516.7	-96.9	525.7	0.00	0.00	
1,950.0	23.09	190.63	1,850.8	-528.3	-99.1	537.5	0.00	0.00	
1,980.0	23.09	190.63	1,878.4	-539.9	-101.3	549.2	0.00	0.00	
2,010.0	23.09	190.63	1,906.0	-551.4	-103.5	561.0	0.00	0.00	
2,040.0	23.09	190.63	1,933.6	-563.0	-105.6	572.7	0.00	0.00	
2,070.0	23.09	190.63	1,961.2	-574.5	-107.8	584.5	0.00	0.00	
2,100.0	23.09	190.63	1,988.8	-586.1	-110.0	596.3	0.00	0.00	
2,130.0	23.09	190.63	2,016.4	-597.7	-112.1	608.0	0.00	0.00	
2,160.0	23.09	190.63	2,044.0	-609.2	-114.3	619.8	0.00	0.00	
2,190.0	23.09	190.63	2,071.6	-620.8	-116.5	631.6	0.00	0.00	
2,220.0	23.09	190.63	2,099.1	-632.4	-118.6	643.3	0.00	0.00	
2,250.0	23.09	190.63	2,126.7	-643.9	-120.8	655.1	0.00	0.00	
2,280.0	23.09	190.63	2,154.3	-655.5	-123.0	666.9	0.00	0.00	
2,310.0	23.09	190.63	2,181.9	-667.1	-125.2	678.6	0.00	0.00	
2,340.0	23.09	190.63	2,209.5	-678.6	-127.3	690.4	0.00	0.00	
2,370.0	23.09	190.63	2,237.1	-690.2	-129.5	702.2	0.00	0.00	
2,400.0	23.09	190.63	2,264.7	-701.8	-131.7	713.9	0.00	0.00	
2,430.0	23.09	190.63	2,292.3	-713.3	-133.8	725.7	0.00	0.00	
2,460.0	23.09	190.63	2,319.9	-724.9	-136.0	737.5	0.00	0.00	
2,490.0	23.09	190.63	2,347.5	-736.5	-138.2	749.2	0.00	0.00	

Targets

Target Name	Dip Angle (°)	Dip Dir. (°)	TVD (ft)	+N/-S (ft)	+E/-W (ft)	Northing (ft)	Easting (ft)	Latitude	Longitude
- hit/miss target - Shape									
O04 696 MF02A-9 TGT - plan misses target center by 2484.9ft at 2490.0ft MD (2347.5 TVD, -736.5 N, -138.2 E) - Point	0.00	0.00	4,689.0	-1,554.2	-291.6	1,634,395.88	2,264,337.33	39° 32' 46.28 N	108° 6' 32.81 W
O04 696 MF02A-9 BHL - plan misses target center by 5862.7ft at 2490.0ft MD (2347.5 TVD, -736.5 N, -138.2 E) - Rectangle (sides W30.0 H50.0 D0.0)	0.00	0.00	8,149.0	-1,564.2	-308.6	1,634,386.35	2,264,320.02	39° 32' 46.18 N	108° 6' 33.03 W

Planning Report

Database: USA EDM 5000 US Multi Users DB
Company: EnCana Oil & Gas (USA) Inc
Project: North Piceance
Site: O04 696 (3rd)
Well: NP MF02A-9 O04 696 (was 18C-4)
Wellbore: DD
Design: Plan #2

Local Co-ordinate Reference: Well NP MF02A-9 O04 696 (was 18C-4)
TVD Reference: KB MF18C-4 @ 6044.0ft (Original Well Elev)
MD Reference: KB MF18C-4 @ 6044.0ft (Original Well Elev)
North Reference: True
Survey Calculation Method: Minimum Curvature

Planned Survey

Measured Depth (ft)	Inclination (°)	Azimuth (°)	Vertical Depth (ft)	+N/-S (ft)	+E/-W (ft)	Vertical Section (ft)	Dogleg Rate (°/100ft)	Build Rate (°/100ft)	Comments / Formations
2,500.0	23.09	190.63	2,356.7	-740.3	-138.9	753.2	0.00	0.00	
2,600.0	23.09	190.63	2,448.7	-778.9	-146.1	792.4	0.00	0.00	
2,700.0	23.09	190.63	2,540.7	-817.4	-153.4	831.6	0.00	0.00	
2,800.0	23.09	190.63	2,632.7	-856.0	-160.6	870.8	0.00	0.00	
2,900.0	23.09	190.63	2,724.7	-894.5	-167.8	910.0	0.00	0.00	
3,000.0	23.09	190.63	2,816.6	-933.1	-175.1	949.2	0.00	0.00	
3,100.0	23.09	190.63	2,908.6	-971.6	-182.3	988.5	0.00	0.00	
3,200.0	23.09	190.63	3,000.6	-1,010.2	-189.5	1,027.7	0.00	0.00	
3,300.0	23.09	190.63	3,092.6	-1,048.7	-196.8	1,066.9	0.00	0.00	
3,400.0	23.09	190.63	3,184.6	-1,087.3	-204.0	1,106.1	0.00	0.00	
3,500.0	23.09	190.63	3,276.6	-1,125.8	-211.2	1,145.3	0.00	0.00	
3,600.0	23.09	190.63	3,368.6	-1,164.4	-218.5	1,184.5	0.00	0.00	
3,700.0	23.09	190.63	3,460.6	-1,202.9	-225.7	1,223.8	0.00	0.00	
3,800.0	23.09	190.63	3,552.5	-1,241.5	-232.9	1,263.0	0.00	0.00	
3,900.0	23.09	190.63	3,644.5	-1,280.0	-240.2	1,302.2	0.00	0.00	
4,000.0	23.09	190.63	3,736.5	-1,318.6	-247.4	1,341.4	0.00	0.00	
4,100.0	23.09	190.63	3,828.5	-1,357.1	-254.6	1,380.6	0.00	0.00	
4,200.0	23.09	190.63	3,920.5	-1,395.7	-261.9	1,419.9	0.00	0.00	
4,221.1	23.09	190.63	3,939.9	-1,403.8	-263.4	1,428.1	0.00	0.00	Start Drop -3.00
4,300.0	20.73	190.63	4,013.1	-1,432.7	-268.8	1,457.6	3.00	-3.00	
4,400.0	17.73	190.63	4,107.5	-1,465.1	-274.9	1,490.5	3.00	-3.00	
4,500.0	14.73	190.63	4,203.5	-1,492.5	-280.0	1,518.4	3.00	-3.00	
4,600.0	11.73	190.63	4,300.9	-1,515.0	-284.2	1,541.3	3.00	-3.00	
4,700.0	8.73	190.63	4,399.3	-1,532.5	-287.5	1,559.1	3.00	-3.00	
4,800.0	5.73	190.63	4,498.4	-1,544.8	-289.8	1,571.6	3.00	-3.00	
4,900.0	2.73	190.63	4,598.2	-1,552.1	-291.2	1,579.0	3.00	-3.00	
4,950.9	1.20	190.63	4,649.0	-1,553.8	-291.5	1,580.7	3.00	-3.00	Williams Fork
4,990.9	0.00	0.00	4,689.0	-1,554.2	-291.6	1,581.2	3.00	-3.00	EOD; Inc=0° - Top of Gas - O04 696 MF02A-9 1
5,000.0	0.09	239.52	4,698.1	-1,554.2	-291.6	1,581.2	1.00	1.00	
5,023.8	0.33	239.52	4,721.9	-1,554.2	-291.7	1,581.2	1.00	1.00	
5,100.0	0.33	239.52	4,798.1	-1,554.5	-292.1	1,581.5	0.00	0.00	
5,200.0	0.33	239.52	4,898.1	-1,554.8	-292.6	1,581.9	0.00	0.00	
5,300.0	0.33	239.52	4,998.1	-1,555.1	-293.0	1,582.3	0.00	0.00	
5,400.0	0.33	239.52	5,098.1	-1,555.3	-293.5	1,582.7	0.00	0.00	
5,500.0	0.33	239.52	5,198.1	-1,555.6	-294.0	1,583.0	0.00	0.00	
5,600.0	0.33	239.52	5,298.1	-1,555.9	-294.5	1,583.4	0.00	0.00	
5,700.0	0.33	239.52	5,398.1	-1,556.2	-295.0	1,583.8	0.00	0.00	
5,800.0	0.33	239.52	5,498.1	-1,556.5	-295.5	1,584.2	0.00	0.00	
5,900.0	0.33	239.52	5,598.1	-1,556.8	-296.0	1,584.6	0.00	0.00	
6,000.0	0.33	239.52	5,698.1	-1,557.1	-296.5	1,585.0	0.00	0.00	
6,100.0	0.33	239.52	5,798.1	-1,557.4	-297.0	1,585.3	0.00	0.00	
6,200.0	0.33	239.52	5,898.1	-1,557.7	-297.5	1,585.7	0.00	0.00	
6,300.0	0.33	239.52	5,998.1	-1,558.0	-298.0	1,586.1	0.00	0.00	
6,400.0	0.33	239.52	6,098.1	-1,558.3	-298.5	1,586.5	0.00	0.00	
6,500.0	0.33	239.52	6,198.1	-1,558.5	-299.0	1,586.9	0.00	0.00	
6,600.0	0.33	239.52	6,298.1	-1,558.8	-299.5	1,587.3	0.00	0.00	
6,700.0	0.33	239.52	6,398.1	-1,559.1	-300.0	1,587.6	0.00	0.00	
6,800.0	0.33	239.52	6,498.1	-1,559.4	-300.5	1,588.0	0.00	0.00	
6,900.0	0.33	239.52	6,598.1	-1,559.7	-301.0	1,588.4	0.00	0.00	
7,000.0	0.33	239.52	6,698.1	-1,560.0	-301.5	1,588.8	0.00	0.00	
7,100.0	0.33	239.52	6,798.1	-1,560.3	-302.0	1,589.2	0.00	0.00	
7,200.0	0.33	239.52	6,898.1	-1,560.6	-302.4	1,589.6	0.00	0.00	

Planning Report

Database:	USA EDM 5000 US Multi Users DB	Local Co-ordinate Reference:	Well NP MF02A-9 O04 696 (was 18C-4)
Company:	EnCana Oil & Gas (USA) Inc	TVD Reference:	KB MF18C-4 @ 6044.0ft (Original Well Elev)
Project:	North Piceance	MD Reference:	KB MF18C-4 @ 6044.0ft (Original Well Elev)
Site:	O04 696 (3rd)	North Reference:	True
Well:	NP MF02A-9 O04 696 (was 18C-4)	Survey Calculation Method:	Minimum Curvature
Wellbore:	DD		
Design:	Plan #2		

Planned Survey

Measured Depth (ft)	Inclination (°)	Azimuth (°)	Vertical Depth (ft)	+N/-S (ft)	+E/-W (ft)	Vertical Section (ft)	Dogleg Rate (°/100ft)	Build Rate (°/100ft)	Comments / Formations
7,300.0	0.33	239.52	6,998.1	-1,560.9	-302.9	1,589.9	0.00	0.00	
7,400.0	0.33	239.52	7,098.1	-1,561.2	-303.4	1,590.3	0.00	0.00	
7,500.0	0.33	239.52	7,198.1	-1,561.5	-303.9	1,590.7	0.00	0.00	
7,600.0	0.33	239.52	7,298.1	-1,561.7	-304.4	1,591.1	0.00	0.00	
7,700.0	0.33	239.52	7,398.1	-1,562.0	-304.9	1,591.5	0.00	0.00	
7,800.0	0.33	239.52	7,498.1	-1,562.3	-305.4	1,591.9	0.00	0.00	
7,900.0	0.33	239.52	7,598.1	-1,562.6	-305.9	1,592.2	0.00	0.00	
8,000.0	0.33	239.52	7,698.1	-1,562.9	-306.4	1,592.6	0.00	0.00	
8,100.0	0.33	239.52	7,798.1	-1,563.2	-306.9	1,593.0	0.00	0.00	
8,200.0	0.33	239.52	7,898.1	-1,563.5	-307.4	1,593.4	0.00	0.00	
8,300.0	0.33	239.52	7,998.1	-1,563.8	-307.9	1,593.8	0.00	0.00	
8,400.0	0.33	239.52	8,098.1	-1,564.1	-308.4	1,594.2	0.00	0.00	
8,450.9	0.33	239.52	8,149.0	-1,564.2	-308.6	1,594.4	0.00	0.00	Rollins - O04 696 MF02A-9 BHL (6.13.11)
8,500.0	0.33	239.52	8,198.1	-1,564.4	-308.9	1,594.5	0.00	0.00	
8,600.0	0.33	239.52	8,298.1	-1,564.7	-309.4	1,594.9	0.00	0.00	
8,600.9	0.33	239.52	8,299.0	-1,564.7	-309.4	1,594.9	0.00	0.00	Drillers TD @ 8299' TVD
8,700.0	0.33	239.52	8,398.1	-1,564.9	-309.9	1,595.3	0.00	0.00	
8,800.0	0.33	239.52	8,498.1	-1,565.2	-310.4	1,595.7	0.00	0.00	
8,900.0	0.33	239.52	8,598.1	-1,565.5	-310.9	1,596.1	0.00	0.00	
9,000.0	0.33	239.52	8,698.1	-1,565.8	-311.3	1,596.5	0.00	0.00	
9,100.0	0.33	239.52	8,798.1	-1,566.1	-311.8	1,596.9	0.00	0.00	
9,200.0	0.33	239.52	8,898.1	-1,566.4	-312.3	1,597.2	0.00	0.00	
9,300.0	0.33	239.52	8,998.1	-1,566.7	-312.8	1,597.6	0.00	0.00	
9,400.0	0.33	239.52	9,098.1	-1,567.0	-313.3	1,598.0	0.00	0.00	
9,500.0	0.33	239.52	9,198.1	-1,567.3	-313.8	1,598.4	0.00	0.00	
9,600.0	0.33	239.52	9,298.1	-1,567.6	-314.3	1,598.8	0.00	0.00	
9,700.0	0.33	239.52	9,398.1	-1,567.9	-314.8	1,599.2	0.00	0.00	
9,800.0	0.33	239.52	9,498.0	-1,568.2	-315.3	1,599.5	0.00	0.00	
9,900.0	0.33	239.52	9,598.0	-1,568.4	-315.8	1,599.9	0.00	0.00	
10,000.0	0.33	239.52	9,698.0	-1,568.7	-316.3	1,600.3	0.00	0.00	
10,100.0	0.33	239.52	9,798.0	-1,569.0	-316.8	1,600.7	0.00	0.00	
10,200.0	0.33	239.52	9,898.0	-1,569.3	-317.3	1,601.1	0.00	0.00	
10,300.0	0.33	239.52	9,998.0	-1,569.6	-317.8	1,601.5	0.00	0.00	
10,302.0	0.33	239.52	10,000.0	-1,569.6	-317.8	1,601.5	0.00	0.00	Permit TD @ 10000' TVD

Targets

Target Name	Dip Angle (°)	Dip Dir. (°)	TVD (ft)	+N/-S (ft)	+E/-W (ft)	Northing (ft)	Easting (ft)	Latitude	Longitude
- hit/miss target									
- Shape									
O04 696 MF02A-9 TGT	0.00	0.00	4,689.0	-1,554.2	-291.6	1,634,395.88	2,264,337.33	39° 32' 46.28 N	108° 6' 32.81 W
- plan hits target center									
- Point									
O04 696 MF02A-9 BHL	0.00	0.00	8,149.0	-1,564.2	-308.6	1,634,386.35	2,264,320.02	39° 32' 46.18 N	108° 6' 33.03 W
- plan hits target center									
- Rectangle (sides W30.0 H50.0 D0.0)									

Planning Report

Database:	USA EDM 5000 US Multi Users DB	Local Co-ordinate Reference:	Well NP MF02A-9 O04 696 (was 18C-4)
Company:	EnCana Oil & Gas (USA) Inc	TVD Reference:	KB MF18C-4 @ 6044.0ft (Original Well Elev)
Project:	North Piceance	MD Reference:	KB MF18C-4 @ 6044.0ft (Original Well Elev)
Site:	O04 696 (3rd)	North Reference:	True
Well:	NP MF02A-9 O04 696 (was 18C-4)	Survey Calculation Method:	Minimum Curvature
Wellbore:	DD		
Design:	Plan #2		

Formations					
Measured Depth (ft)	Vertical Depth (ft)	Name	Lithology	Dip (°)	Dip Direction (°)
4,950.9	4,649.0	Williams Fork		0.00	
4,990.9	4,689.0	Top of Gas		0.00	
8,450.9	8,149.0	Rollins		0.00	

Plan Annotations				
Measured Depth (ft)	Vertical Depth (ft)	Local Coordinates		Comment
		+N/-S (ft)	+E/-W (ft)	
200.0	200.0	0.0	0.0	KOP @ 200'
969.8	949.1	-150.4	-28.2	EOB; Inc=23.09°
4,221.1	3,939.9	-1,403.8	-263.4	Start Drop -3.00
4,990.9	4,689.0	-1,554.2	-291.6	EOD; Inc=0°
8,600.9	8,299.0	-1,554.2	-291.7	Drillers TD @ 8299' TVD
10,302.0	10,000.0	-1,564.2	-308.6	Permit TD @ 10000' TVD

EnCana Oil & Gas (USA) Inc

North Piceance

O04 696 (3rd)

NP MF02A-9 O04 696 (was 18C-4)

DD

Plan #2

Anticollision Report

14 June, 2011

Anticollision Report

Company:	EnCana Oil & Gas (USA) Inc	Local Co-ordinate Reference:	Well NP MF02A-9 O04 696 (was 18C-4)
Project:	North Piceance	TVD Reference:	KB MF18C-4 @ 6044.0ft (Original Well Elev)
Reference Site:	O04 696 (3rd)	MD Reference:	KB MF18C-4 @ 6044.0ft (Original Well Elev)
Site Error:	0.0ft	North Reference:	True
Reference Well:	NP MF02A-9 O04 696 (was 18C-4)	Survey Calculation Method:	Minimum Curvature
Well Error:	0.0ft	Output errors are at	2.00 sigma
Reference Wellbore	DD	Database:	EDM 5000.1 US Multi Users DB
Reference Design:	Plan #2	Offset TVD Reference:	Offset Datum

Reference	Plan #2		
Filter type:	NO GLOBAL FILTER: Using user defined selection & filtering criteria		
Interpolation Method:	MD Interval 100.0ft	Error Model:	Systematic Ellipse
Depth Range:	Unlimited	Scan Method:	Closest Approach 3D
Results Limited by:	Maximum center-center distance of 100.0ft	Error Surface:	Elliptical Conic
Warning Levels Evaluated at:	2.00 Sigma		

Survey Tool Program		Date	6/14/2011		
From (ft)	To (ft)	Survey (Wellbore)	Tool Name	Description	
0.0	10,302.0	Plan #2 (DD)	MWD	Geolink MWD	

Anticollision Report

Company:	EnCana Oil & Gas (USA) Inc	Local Co-ordinate Reference:	Well NP MF02A-9 O04 696 (was 18C-4)
Project:	North Piceance	TVD Reference:	KB MF18C-4 @ 6044.0ft (Original Well Elev)
Reference Site:	O04 696 (3rd)	MD Reference:	KB MF18C-4 @ 6044.0ft (Original Well Elev)
Site Error:	0.0ft	North Reference:	True
Reference Well:	NP MF02A-9 O04 696 (was 18C-4)	Survey Calculation Method:	Minimum Curvature
Well Error:	0.0ft	Output errors are at	2.00 sigma
Reference Wellbore	DD	Database:	EDM 5000.1 US Multi Users DB
Reference Design:	Plan #2	Offset TVD Reference:	Offset Datum

Summary						
Site Name	Reference Measured Depth (ft)	Offset Measured Depth (ft)	Distance Between Centres (ft)	Distance Between Ellipses (ft)	Separation Factor	Warning
Offset Well - Wellbore - Design						
D09A 696 (NWNW S9-T6S-R96W)						
N.P MF02B-9 D09A 696 - DD - DD						Out of range
N.P MF02B-9 D09A 696 - DD - Plan #1						Out of range
N.P MF02B-9 D09A 696 - DD - Plan #2						Out of range
N.P MF02C-9 D09A 696 - DD - Plan #1						Out of range
N.P MF02C-9 D09A 696 - DD - Plan #2						Out of range
N.P MF02C-9 D09A 696 - DD - Plan #3						Out of range
NP MF02A D09A 696 - DD - DD						Out of range
NP MF02A D09A 696 - DD - Plan #1						Out of range
NP MF02A D09A 696 - DD - Plan #2						Out of range
NP MF02C D09A 696 - DD - DD						Out of range
NP MF02C D09A 696 - DD - Plan #1						Out of range
NP MF02C D09A 696 - DD - Plan #2						Out of range
E09 696 (SWNW S9-T6S-R96W)						
NP MF02C-9 E09 696 - DD - DD						Out of range
NP MF02C-9 E09 696 - DD - Plan #1						Out of range
NP MF02C-9 E09 696 - DD - Plan #2						Out of range
NP MF02C-9 E09 696 - DD - Plan #3						Out of range
NP MF07A E09 696(Moved off Pad) - DD - Plan #1						Out of range
N04 696 Pad (NESW Sec4-T6S-R96W)						
NP MF17C N04 696 - DD - DD						Out of range
NP MF17C N04 696 - DD - Plan #1						Out of range
NP MF18A N04 696 - DD - Plan#2						Out of range
NP MF18C N04 696 - DD - DD						Out of range
NP MF18C N04 696 - DD - Plan #3						Out of range
NP MF18C N04 696 - DD - Plan #5						Out of range
NP MF18C N04 696 - STK 1 - Plan #1						Out of range
NP MF18C N04 696 - STK 1 - Plan #2						Out of range
NP MF18C N04 696 - STK 1 - STK 1						Out of range
NP MF18C-4 N04 696 - DD - Plan #1						Out of range
NP MF18C-4 N04 696 - DD - Plan #2						Out of range

Anticollision Report

Company:	EnCana Oil & Gas (USA) Inc	Local Co-ordinate Reference:	Well NP MF02A-9 O04 696 (was 18C-4)
Project:	North Piceance	TVD Reference:	KB MF18C-4 @ 6044.0ft (Original Well Elev)
Reference Site:	O04 696 (3rd)	MD Reference:	KB MF18C-4 @ 6044.0ft (Original Well Elev)
Site Error:	0.0ft	North Reference:	True
Reference Well:	NP MF02A-9 O04 696 (was 18C-4)	Survey Calculation Method:	Minimum Curvature
Well Error:	0.0ft	Output errors are at	2.00 sigma
Reference Wellbore	DD	Database:	EDM 5000.1 US Multi Users DB
Reference Design:	Plan #2	Offset TVD Reference:	Offset Datum

Summary

Site Name	Reference Measured Depth (ft)	Offset Measured Depth (ft)	Distance Between Centres (ft)	Distance Between Ellipses (ft)	Separation Factor	Warning
Offset Well - Wellbore - Design						
O04 696 (3rd)						
NP MF01D-9 O04 696 (was 17C-4) - DD - Plan #2	200.0	200.0	28.1	27.5	45.278	CC, ES
NP MF01D-9 O04 696 (was 17C-4) - DD - Plan #2	1,000.0	1,004.7	93.8	87.5	14.770	SF
NP MF06A-3 O04 696 (was 11C-3) - DD - Plan #2						Out of range
NP MF06B-3 O04 696 (was 15A-4) - DD - Plan #2						Out of range
NP MF06C-3 O04 696 (was 09C-4) - DD - Plan #2						Out of range
NP MF06E-3 O04 696 (was 11B-3) - DD - Plan #2						Out of range
NP MF08B-9 O04 696 (was 01B-9) - DD - Plan #2	200.0	200.0	11.0	10.4	17.723	CC, ES
NP MF08B-9 O04 696 (was 01B-9) - DD - Plan #2	500.0	499.5	20.6	18.7	10.431	SF
NP MF11A-3 O04 696 (was 12C-3) - DD - Plan #2						Out of range
NP MF11B-3 O04 696 (was 14A-3) - DD - Plan #2						Out of range
NP MF11D-3 O04 696 (was 14B-3) - DD - Plan #2						Out of range
NP MF11E-3 O04 696 (was 13A-3) - DD - Plan #2	200.0	200.0	91.3	90.7	146.978	CC, ES
NP MF11E-3 O04 696 (was 13A-3) - DD - Plan #2	300.0	295.7	95.9	94.9	99.263	SF
NP MF11G-3 O04 696 (was 14C-3) - DD - Plan #2	200.0	200.0	83.6	83.0	134.623	CC, ES
NP MF11G-3 O04 696 (was 14C-3) - DD - Plan #2	400.0	396.0	95.0	93.6	71.805	SF
NP MF14A-3 O04 696 (was 13B-3) - DD - Plan #2	200.0	200.0	91.6	90.9	147.373	CC, ES
NP MF14A-3 O04 696 (was 13B-3) - DD - Plan #2	300.0	296.1	95.8	94.8	98.886	SF
NP MF14C-3 O04 696 (was 14D-3) - DD - Plan #2	200.0	200.0	83.9	83.3	135.078	CC, ES
NP MF14C-3 O04 696 (was 14D-3) - DD - Plan #2	400.0	392.8	99.8	98.5	74.104	SF
NP MF14D-3 O04 696 (was 19A-3) - DD - Plan #2	200.0	200.0	64.0	63.3	102.957	CC, ES
NP MF14D-3 O04 696 (was 19A-3) - DD - Plan #2	500.0	494.3	90.4	88.7	52.773	SF
NP MF14E-3 O04 696 (was 19B-3) - DD - Plan #2	200.0	200.0	64.3	63.7	103.508	CC, ES
NP MF14E-3 O04 696 (was 19B-3) - DD - Plan #2	500.0	491.8	95.3	93.5	52.303	SF
NP MF15A-4 O04 696 (was 11D-3) - DD - Plan #2						Out of range
NP MF15D-4 O04 696 (was 01B-9) - DD - Plan #2	200.0	200.0	7.7	7.0	12.345	CC, ES
NP MF15D-4 O04 696 (was 01B-9) - DD - Plan #2	300.0	300.0	10.1	9.1	10.375	SF
NP MF18B-4 O04 696 (was 01A-9) - DD - Plan #2	200.0	200.0	8.1	7.4	12.970	CC
NP MF18B-4 O04 696 (was 01A-9) - DD - Plan #2	300.0	299.7	8.4	7.4	8.563	ES
NP MF18B-4 O04 696 (was 01A-9) - DD - Plan #2	600.0	599.1	13.1	10.5	5.045	SF
NP MF19A-3 O04 696 (was 17B-4) - DD - Plan #2	200.0	200.0	55.5	54.9	89.319	CC, ES
NP MF19A-3 O04 696 (was 17B-4) - DD - Plan #2	500.0	496.1	80.7	78.9	45.478	SF
NP MF19C-3 O04 696 (was 20B-3) - DD - Plan #2	200.0	200.0	56.0	55.4	90.137	CC, ES
NP MF19C-3 O04 696 (was 20B-3) - DD - Plan #2	500.0	495.2	81.9	80.1	43.871	SF
NP MF19D-3 O04 696 (was 19C-3) - DD - Plan #2	200.0	200.0	35.8	35.2	57.651	CC, ES
NP MF19D-3 O04 696 (was 19C-3) - DD - Plan #2	500.0	499.7	56.4	54.7	33.200	SF
NP MF19E-3 O04 696 (was 19D-3) - DD - Plan #2	200.0	200.0	36.6	35.9	58.833	CC, ES
NP MF19E-3 O04 696 (was 19D-3) - DD - Plan #2	600.0	593.6	79.1	76.6	31.603	SF
NP MF20F-3 O04 696 (was 20D-3) - DD - Plan #2	200.0	200.0	29.1	28.5	46.860	CC, ES
NP MF20F-3 O04 696 (was 20D-3) - DD - Plan #2	600.0	595.9	65.2	62.6	25.462	SF

Anticollision Report

Company:	EnCana Oil & Gas (USA) Inc	Local Co-ordinate Reference:	Well NP MF02A-9 O04 696 (was 18C-4)
Project:	North Piceance	TVD Reference:	KB MF18C-4 @ 6044.0ft (Original Well Elev)
Reference Site:	O04 696 (3rd)	MD Reference:	KB MF18C-4 @ 6044.0ft (Original Well Elev)
Site Error:	0.0ft	North Reference:	True
Reference Well:	NP MF02A-9 O04 696 (was 18C-4)	Survey Calculation Method:	Minimum Curvature
Well Error:	0.0ft	Output errors are at	2.00 sigma
Reference Wellbore	DD	Database:	EDM 5000.1 US Multi Users DB
Reference Design:	Plan #2	Offset TVD Reference:	Offset Datum

Offset Design													Offset Site Error:		0.0 ft
Survey Program: 0-MWD													Offset Well Error:		0.0 ft
Reference		Offset		Semi Major Axis			Distance							Warning	
Measured Depth (ft)	Vertical Depth (ft)	Measured Depth (ft)	Vertical Depth (ft)	Reference (ft)	Offset (ft)	Highside Toolface (°)	Offset Wellbore Centre +N/-S (ft)	+E/-W (ft)	Between Centres (ft)	Between Ellipses (ft)	Total Uncertainty Axis	Separation Factor			
0.0	0.0	0.0	0.0	0.0	0.0	37.77	22.2	17.2	28.1						
100.0	100.0	100.0	100.0	0.1	0.1	37.77	22.2	17.2	28.1	27.9	0.27	103.327			
200.0	200.0	200.0	200.0	0.3	0.3	37.77	22.2	17.2	28.1	27.5	0.62	45.278	CC, ES		
300.0	300.0	300.5	300.5	0.5	0.5	-154.12	21.6	17.4	30.1	29.1	0.97	30.910			
400.0	399.6	401.4	401.3	0.7	0.7	-152.94	16.4	18.7	33.8	32.4	1.34	25.149			
500.0	498.8	502.4	501.7	1.0	0.9	-149.37	6.1	21.3	39.0	37.2	1.77	21.983			
600.0	597.1	603.3	601.3	1.4	1.2	-144.57	-9.4	25.2	45.9	43.5	2.32	19.784			
700.0	694.3	704.1	699.8	1.8	1.6	-139.46	-29.9	30.4	54.7	51.6	3.03	18.034			
800.0	790.2	804.6	796.8	2.3	2.1	-134.60	-55.3	36.8	65.6	61.7	3.94	16.632			
900.0	884.4	904.8	892.1	3.0	2.7	-130.25	-85.5	44.4	78.7	73.6	5.06	15.558			
1,000.0	976.9	1,004.7	985.2	3.6	3.4	-126.45	-120.5	53.3	93.8	87.5	6.35	14.770	SF		

Anticollision Report

Company:	EnCana Oil & Gas (USA) Inc	Local Co-ordinate Reference:	Well NP MF02A-9 O04 696 (was 18C-4)
Project:	North Piceance	TVD Reference:	KB MF18C-4 @ 6044.0ft (Original Well Elev)
Reference Site:	O04 696 (3rd)	MD Reference:	KB MF18C-4 @ 6044.0ft (Original Well Elev)
Site Error:	0.0ft	North Reference:	True
Reference Well:	NP MF02A-9 O04 696 (was 18C-4)	Survey Calculation Method:	Minimum Curvature
Well Error:	0.0ft	Output errors are at	2.00 sigma
Reference Wellbore	DD	Database:	EDM 5000.1 US Multi Users DB
Reference Design:	Plan #2	Offset TVD Reference:	Offset Datum

Offset Design O04 696 (3rd) - NP MF08B-9 O04 696 (was 01B-9) - DD - Plan #2													Offset Site Error:	0.0 ft
Survey Program: 0-MWD													Offset Well Error:	0.0 ft
Reference		Offset		Semi Major Axis			Distance							Warning
Measured Depth	Vertical Depth	Measured Depth	Vertical Depth	Reference	Offset	Highside Toolface	Offset Wellbore Centre		Between Centres	Between Ellipses	Total Uncertainty	Separation		
(ft)	(ft)	(ft)	(ft)	(ft)	(ft)	(°)	+N/-S (ft)	+E/-W (ft)	(ft)	(ft)	Axis	Factor		
0.0	0.0	0.0	0.0	0.0	0.0	84.77	1.0	11.0	11.0					
100.0	100.0	100.0	100.0	0.1	0.1	84.77	1.0	11.0	11.0	10.7	0.27	40.444		
200.0	200.0	200.0	200.0	0.3	0.3	84.77	1.0	11.0	11.0	10.4	0.62	17.723 CC, ES		
300.0	300.0	299.9	299.9	0.5	0.5	-105.48	-1.5	11.6	12.1	11.1	0.99	12.250		
400.0	399.6	399.8	399.4	0.7	0.7	-104.65	-9.2	13.3	15.3	13.9	1.42	10.751		
500.0	498.8	499.5	498.2	1.0	1.0	-103.82	-21.8	16.3	20.6	18.7	1.98	10.431 SF		
600.0	597.1	599.0	596.1	1.4	1.4	-103.14	-39.4	20.4	28.1	25.4	2.69	10.471		
700.0	694.3	698.2	692.6	1.8	1.8	-102.59	-61.9	25.6	37.7	34.1	3.55	10.605		
800.0	790.2	797.1	787.4	2.3	2.3	-102.14	-89.2	31.9	49.3	44.7	4.59	10.751		
900.0	884.4	895.7	880.4	3.0	2.9	-101.74	-121.0	39.3	62.9	57.2	5.78	10.885		
1,000.0	976.9	993.8	971.1	3.6	3.6	-101.34	-157.4	47.7	78.5	71.4	7.12	11.029		
1,100.0	1,068.9	1,091.4	1,059.4	4.3	4.4	-99.04	-198.0	57.2	95.3	86.8	8.54	11.166		

Anticollision Report

Company:	EnCana Oil & Gas (USA) Inc	Local Co-ordinate Reference:	Well NP MF02A-9 O04 696 (was 18C-4)
Project:	North Piceance	TVD Reference:	KB MF18C-4 @ 6044.0ft (Original Well Elev)
Reference Site:	O04 696 (3rd)	MD Reference:	KB MF18C-4 @ 6044.0ft (Original Well Elev)
Site Error:	0.0ft	North Reference:	True
Reference Well:	NP MF02A-9 O04 696 (was 18C-4)	Survey Calculation Method:	Minimum Curvature
Well Error:	0.0ft	Output errors are at	2.00 sigma
Reference Wellbore	DD	Database:	EDM 5000.1 US Multi Users DB
Reference Design:	Plan #2	Offset TVD Reference:	Offset Datum

Offset Design O04 696 (3rd) - NP MF11E-3 O04 696 (was 13A-3) - DD - Plan #2													Offset Site Error: 0.0 ft
Survey Program: 0-MWD													Offset Well Error: 0.0 ft
Reference		Offset		Semi Major Axis		Distance							
Measured Depth (ft)	Vertical Depth (ft)	Measured Depth (ft)	Vertical Depth (ft)	Reference (ft)	Offset (ft)	Highside Toolface (°)	Offset Wellbore Centre +N/-S (ft)	+E/-W (ft)	Between Centres (ft)	Between Ellipses (ft)	Total Uncertainty Axis	Separation Factor	Warning
0.0	0.0	0.0	0.0	0.0	0.0	38.14	71.8	56.4	91.3				
100.0	100.0	100.0	100.0	0.1	0.1	38.14	71.8	56.4	91.3	91.1	0.27	335.412	
200.0	200.0	200.0	200.0	0.3	0.3	38.14	71.8	56.4	91.3	90.7	0.62	146.978 CC, ES	
300.0	300.0	295.7	295.7	0.5	0.5	-152.47	72.8	58.6	95.9	94.9	0.97	99.263 SF	

Anticollision Report

Company:	EnCana Oil & Gas (USA) Inc	Local Co-ordinate Reference:	Well NP MF02A-9 O04 696 (was 18C-4)
Project:	North Piceance	TVD Reference:	KB MF18C-4 @ 6044.0ft (Original Well Elev)
Reference Site:	O04 696 (3rd)	MD Reference:	KB MF18C-4 @ 6044.0ft (Original Well Elev)
Site Error:	0.0ft	North Reference:	True
Reference Well:	NP MF02A-9 O04 696 (was 18C-4)	Survey Calculation Method:	Minimum Curvature
Well Error:	0.0ft	Output errors are at	2.00 sigma
Reference Wellbore	DD	Database:	EDM 5000.1 US Multi Users DB
Reference Design:	Plan #2	Offset TVD Reference:	Offset Datum

Offset Design O04 696 (3rd) - NP MF11G-3 O04 696 (was 14C-3) - DD - Plan #2													Offset Site Error: 0.0 ft
Survey Program: 0-MWD													Offset Well Error: 0.0 ft
Reference		Offset		Semi Major Axis			Distance						Warning
Measured Depth (ft)	Vertical Depth (ft)	Measured Depth (ft)	Vertical Depth (ft)	Reference (ft)	Offset (ft)	Highside Toolface (°)	Offset Wellbore Centre +N/-S (ft)	+E/-W (ft)	Between Centres (ft)	Between Ellipses (ft)	Total Uncertainty Axis	Separation Factor	
0.0	0.0	0.0	0.0	0.0	0.0	38.17	65.8	51.7	83.6				
100.0	100.0	100.0	100.0	0.1	0.1	38.17	65.8	51.7	83.6	83.4	0.27	307.215	
200.0	200.0	200.0	200.0	0.3	0.3	38.17	65.8	51.7	83.6	83.0	0.62	134.623 CC, ES	
300.0	300.0	300.0	300.0	0.5	0.5	-153.23	65.8	51.7	86.0	85.0	0.97	88.503	
400.0	399.6	396.0	396.0	0.7	0.7	-154.26	66.3	54.0	95.0	93.6	1.32	71.805 SF	

Anticollision Report

Company:	EnCana Oil & Gas (USA) Inc	Local Co-ordinate Reference:	Well NP MF02A-9 O04 696 (was 18C-4)
Project:	North Piceance	TVD Reference:	KB MF18C-4 @ 6044.0ft (Original Well Elev)
Reference Site:	O04 696 (3rd)	MD Reference:	KB MF18C-4 @ 6044.0ft (Original Well Elev)
Site Error:	0.0ft	North Reference:	True
Reference Well:	NP MF02A-9 O04 696 (was 18C-4)	Survey Calculation Method:	Minimum Curvature
Well Error:	0.0ft	Output errors are at	2.00 sigma
Reference Wellbore	DD	Database:	EDM 5000.1 US Multi Users DB
Reference Design:	Plan #2	Offset TVD Reference:	Offset Datum

Offset Design O04 696 (3rd) - NP MF14A-3 O04 696 (was 13B-3) - DD - Plan #2													Offset Site Error: 0.0 ft
Survey Program: 0-MWD													Offset Well Error: 0.0 ft
Reference		Offset		Semi Major Axis		Distance							
Measured Depth (ft)	Vertical Depth (ft)	Measured Depth (ft)	Vertical Depth (ft)	Reference (ft)	Offset (ft)	Highside Toolface (°)	Offset Wellbore Centre +N/-S (ft)	+E/-W (ft)	Between Centres (ft)	Between Ellipses (ft)	Total Uncertainty Axis	Separation Factor	Warning
0.0	0.0	0.0	0.0	0.0	0.0	43.18	66.8	62.7	91.6				
100.0	100.0	100.0	100.0	0.1	0.1	43.18	66.8	62.7	91.6	91.3	0.27	336.314	
200.0	200.0	200.0	200.0	0.3	0.3	43.18	66.8	62.7	91.6	90.9	0.62	147.373 CC, ES	
300.0	300.0	296.1	296.1	0.5	0.5	-147.31	67.2	65.0	95.8	94.8	0.97	98.886 SF	

Anticollision Report

Company:	EnCana Oil & Gas (USA) Inc	Local Co-ordinate Reference:	Well NP MF02A-9 O04 696 (was 18C-4)
Project:	North Piceance	TVD Reference:	KB MF18C-4 @ 6044.0ft (Original Well Elev)
Reference Site:	O04 696 (3rd)	MD Reference:	KB MF18C-4 @ 6044.0ft (Original Well Elev)
Site Error:	0.0ft	North Reference:	True
Reference Well:	NP MF02A-9 O04 696 (was 18C-4)	Survey Calculation Method:	Minimum Curvature
Well Error:	0.0ft	Output errors are at	2.00 sigma
Reference Wellbore	DD	Database:	EDM 5000.1 US Multi Users DB
Reference Design:	Plan #2	Offset TVD Reference:	Offset Datum

Offset Design O04 696 (3rd) - NP MF14C-3 O04 696 (was 14D-3) - DD - Plan #2													Offset Site Error: 0.0 ft
Survey Program: 0-MWD													Offset Well Error: 0.0 ft
Reference		Offset		Semi Major Axis		Distance							
Measured Depth (ft)	Vertical Depth (ft)	Measured Depth (ft)	Vertical Depth (ft)	Reference (ft)	Offset (ft)	Highside Toolface (°)	Offset Wellbore Centre +N/-S (ft)	+E/-W (ft)	Between Centres (ft)	Between Ellipses (ft)	Total Uncertainty Axis	Separation Factor	Warning
0.0	0.0	0.0	0.0	0.0	0.0	43.68	60.7	58.0	83.9				
100.0	100.0	100.0	100.0	0.1	0.1	43.68	60.7	58.0	83.9	83.7	0.27	308.255	
200.0	200.0	200.0	200.0	0.3	0.3	43.68	60.7	58.0	83.9	83.3	0.62	135.078 CC, ES	
300.0	300.0	296.8	296.8	0.5	0.5	-146.65	60.7	60.4	87.9	86.9	0.97	90.527	
400.0	399.6	392.8	392.5	0.7	0.7	-145.87	60.9	67.7	99.8	98.5	1.35	74.104 SF	

Anticollision Report

Company:	EnCana Oil & Gas (USA) Inc	Local Co-ordinate Reference:	Well NP MF02A-9 O04 696 (was 18C-4)
Project:	North Piceance	TVD Reference:	KB MF18C-4 @ 6044.0ft (Original Well Elev)
Reference Site:	O04 696 (3rd)	MD Reference:	KB MF18C-4 @ 6044.0ft (Original Well Elev)
Site Error:	0.0ft	North Reference:	True
Reference Well:	NP MF02A-9 O04 696 (was 18C-4)	Survey Calculation Method:	Minimum Curvature
Well Error:	0.0ft	Output errors are at	2.00 sigma
Reference Wellbore	DD	Database:	EDM 5000.1 US Multi Users DB
Reference Design:	Plan #2	Offset TVD Reference:	Offset Datum

Offset Design O04 696 (3rd) - NP MF14D-3 O04 696 (was 19A-3) - DD - Plan #2													Offset Site Error: 0.0 ft
Survey Program: 0-MWD													Offset Well Error: 0.0 ft
Reference		Offset		Semi Major Axis			Distance						Warning
Measured Depth (ft)	Vertical Depth (ft)	Measured Depth (ft)	Vertical Depth (ft)	Reference (ft)	Offset (ft)	Highside Toolface (°)	Offset Wellbore Centre +N/-S (ft)	+E/-W (ft)	Between Centres (ft)	Between Ellipses (ft)	Total Uncertainty Axis	Separation Factor	
0.0	0.0	0.0	0.0	0.0	0.0	37.75	50.6	39.2	64.0				
100.0	100.0	100.0	100.0	0.1	0.1	37.75	50.6	39.2	64.0	63.7	0.27	234.952	
200.0	200.0	200.0	200.0	0.3	0.3	37.75	50.6	39.2	64.0	63.3	0.62	102.957 CC, ES	
300.0	300.0	300.0	300.0	0.5	0.5	-153.88	50.6	39.2	66.3	65.3	0.97	68.266	
400.0	399.6	397.7	397.7	0.7	0.7	-154.74	50.4	41.7	74.7	73.4	1.33	56.302	
500.0	498.8	494.3	494.0	1.0	0.9	-153.93	49.8	49.0	90.4	88.7	1.71	52.773 SF	

Anticollision Report

Company:	EnCana Oil & Gas (USA) Inc	Local Co-ordinate Reference:	Well NP MF02A-9 O04 696 (was 18C-4)
Project:	North Piceance	TVD Reference:	KB MF18C-4 @ 6044.0ft (Original Well Elev)
Reference Site:	O04 696 (3rd)	MD Reference:	KB MF18C-4 @ 6044.0ft (Original Well Elev)
Site Error:	0.0ft	North Reference:	True
Reference Well:	NP MF02A-9 O04 696 (was 18C-4)	Survey Calculation Method:	Minimum Curvature
Well Error:	0.0ft	Output errors are at	2.00 sigma
Reference Wellbore	DD	Database:	EDM 5000.1 US Multi Users DB
Reference Design:	Plan #2	Offset TVD Reference:	Offset Datum

Offset Design O04 696 (3rd) - NP MF14E-3 O04 696 (was 19B-3) - DD - Plan #2													Offset Site Error:	0.0 ft
Survey Program: 0-MWD													Offset Well Error:	0.0 ft
Reference		Offset		Semi Major Axis			Distance					Separation Factor	Warning	
Measured Depth (ft)	Vertical Depth (ft)	Measured Depth (ft)	Vertical Depth (ft)	Reference (ft)	Offset (ft)	Highside Toolface (°)	Offset Wellbore Centre +N/-S (ft)	+E/-W (ft)	Between Centres (ft)	Between Ellipses (ft)	Total Uncertainty Axis			
0.0	0.0	0.0	0.0	0.0	0.0	44.94	45.5	45.4	64.3					
100.0	100.0	100.0	100.0	0.1	0.1	44.94	45.5	45.4	64.3	64.0	0.27	236.210		
200.0	200.0	200.0	200.0	0.3	0.3	44.94	45.5	45.4	64.3	63.7	0.62	103.508 CC, ES		
300.0	300.0	298.2	298.2	0.5	0.5	-145.00	44.9	47.9	67.8	66.8	0.98	69.434		
400.0	399.6	395.8	395.4	0.7	0.7	-143.28	42.9	55.1	78.1	76.7	1.37	57.115		
500.0	498.8	491.8	490.7	1.0	1.0	-141.20	39.7	66.9	95.3	93.5	1.82	52.303 SF		

Anticollision Report

Company:	EnCana Oil & Gas (USA) Inc	Local Co-ordinate Reference:	Well NP MF02A-9 O04 696 (was 18C-4)
Project:	North Piceance	TVD Reference:	KB MF18C-4 @ 6044.0ft (Original Well Elev)
Reference Site:	O04 696 (3rd)	MD Reference:	KB MF18C-4 @ 6044.0ft (Original Well Elev)
Site Error:	0.0ft	North Reference:	True
Reference Well:	NP MF02A-9 O04 696 (was 18C-4)	Survey Calculation Method:	Minimum Curvature
Well Error:	0.0ft	Output errors are at	2.00 sigma
Reference Wellbore	DD	Database:	EDM 5000.1 US Multi Users DB
Reference Design:	Plan #2	Offset TVD Reference:	Offset Datum

Offset Design O04 696 (3rd) - NP MF15D-4 O04 696 (was 01B-9) - DD - Plan #2													Offset Site Error: 0.0 ft
Survey Program: 0-MWD													Offset Well Error: 0.0 ft
Reference		Offset		Semi Major Axis			Distance						Warning
Measured Depth (ft)	Vertical Depth (ft)	Measured Depth (ft)	Vertical Depth (ft)	Reference (ft)	Offset (ft)	Highside Toolface (°)	Offset Wellbore Centre +N/-S (ft)	+E/-W (ft)	Between Centres (ft)	Between Ellipses (ft)	Total Uncertainty Axis	Separation Factor	
0.0	0.0	0.0	0.0	0.0	0.0	37.79	6.1	4.7	7.7				
100.0	100.0	100.0	100.0	0.1	0.1	37.79	6.1	4.7	7.7	7.4	0.27	28.172	
200.0	200.0	200.0	200.0	0.3	0.3	37.79	6.1	4.7	7.7	7.0	0.62	12.345 CC, ES	
300.0	300.0	300.0	300.0	0.5	0.5	-159.63	6.1	4.7	10.1	9.1	0.97	10.375 SF	
400.0	399.6	399.7	399.7	0.7	0.7	-174.15	6.4	3.0	17.4	16.1	1.32	13.223	
500.0	498.8	498.6	498.5	1.0	0.9	173.61	7.6	-2.0	30.8	29.1	1.68	18.345	
600.0	597.1	596.7	596.3	1.4	1.0	168.15	9.0	-8.5	50.0	48.0	2.05	24.435	
700.0	694.3	693.6	693.0	1.8	1.2	166.62	10.4	-14.9	74.5	72.0	2.42	30.728	

Anticollision Report

Company:	EnCana Oil & Gas (USA) Inc	Local Co-ordinate Reference:	Well NP MF02A-9 O04 696 (was 18C-4)
Project:	North Piceance	TVD Reference:	KB MF18C-4 @ 6044.0ft (Original Well Elev)
Reference Site:	O04 696 (3rd)	MD Reference:	KB MF18C-4 @ 6044.0ft (Original Well Elev)
Site Error:	0.0ft	North Reference:	True
Reference Well:	NP MF02A-9 O04 696 (was 18C-4)	Survey Calculation Method:	Minimum Curvature
Well Error:	0.0ft	Output errors are at	2.00 sigma
Reference Wellbore	DD	Database:	EDM 5000.1 US Multi Users DB
Reference Design:	Plan #2	Offset TVD Reference:	Offset Datum

Offset Design												O04 696 (3rd) - NP MF18B-4 O04 696 (was 01A-9) - DD - Plan #2		Offset Site Error:		0.0 ft	
Survey Program:												0-MWD		Offset Well Error:		0.0 ft	
Reference		Offset		Semi Major Axis			Distance							Warning			
Measured Depth (ft)	Vertical Depth (ft)	Measured Depth (ft)	Vertical Depth (ft)	Reference (ft)	Offset (ft)	Highside Toolface (°)	Offset Wellbore Centre +N/-S (ft)	+E/-W (ft)	Between Centres (ft)	Between Ellipses (ft)	Total Uncertainty Axis	Separation Factor					
0.0	0.0	0.0	0.0	0.0	0.0	128.96	-5.1	6.3	8.1								
100.0	100.0	100.0	100.0	0.1	0.1	128.96	-5.1	6.3	8.1	7.8	0.27	29.599					
200.0	200.0	200.0	200.0	0.3	0.3	128.96	-5.1	6.3	8.1	7.4	0.62	12.970 CC					
300.0	300.0	299.7	299.7	0.5	0.5	-63.24	-7.7	6.2	8.4	7.4	0.98	8.563 ES					
400.0	399.6	399.5	399.1	0.7	0.7	-67.27	-15.5	6.0	9.5	8.1	1.40	6.764					
500.0	498.8	499.3	498.2	1.0	1.0	-74.89	-27.9	5.7	11.1	9.2	1.94	5.747					
600.0	597.1	599.1	597.1	1.4	1.2	-100.44	-41.0	5.4	13.1	10.5	2.59	5.045 SF					
700.0	694.3	698.5	695.7	1.8	1.5	-130.48	-54.1	5.1	19.8	16.8	3.00	6.585					
800.0	790.2	797.3	793.5	2.3	1.8	-148.75	-67.1	4.7	33.3	30.1	3.21	10.386					
900.0	884.4	895.0	890.5	3.0	2.1	-158.31	-79.9	4.4	53.0	49.6	3.43	15.464					
1,000.0	976.9	991.7	986.2	3.6	2.4	-163.70	-92.7	4.1	78.1	74.4	3.69	21.172					

Anticollision Report

Company:	EnCana Oil & Gas (USA) Inc	Local Co-ordinate Reference:	Well NP MF02A-9 O04 696 (was 18C-4)
Project:	North Piceance	TVD Reference:	KB MF18C-4 @ 6044.0ft (Original Well Elev)
Reference Site:	O04 696 (3rd)	MD Reference:	KB MF18C-4 @ 6044.0ft (Original Well Elev)
Site Error:	0.0ft	North Reference:	True
Reference Well:	NP MF02A-9 O04 696 (was 18C-4)	Survey Calculation Method:	Minimum Curvature
Well Error:	0.0ft	Output errors are at	2.00 sigma
Reference Wellbore	DD	Database:	EDM 5000.1 US Multi Users DB
Reference Design:	Plan #2	Offset TVD Reference:	Offset Datum

Offset Design O04 696 (3rd) - NP MF19A-3 O04 696 (was 17B-4) - DD - Plan #2													Offset Site Error: 0.0 ft
Survey Program: 0-MWD													Offset Well Error: 0.0 ft
Reference		Offset		Semi Major Axis		Distance							
Measured Depth (ft)	Vertical Depth (ft)	Measured Depth (ft)	Vertical Depth (ft)	Reference (ft)	Offset (ft)	Highside Toolface (°)	Offset Wellbore Centre +N/-S (ft)	+E/-W (ft)	Between Centres (ft)	Between Ellipses (ft)	Total Uncertainty Axis	Separation Factor	Warning
0.0	0.0	0.0	0.0	0.0	0.0	38.39	43.5	34.5	55.5				
100.0	100.0	100.0	100.0	0.1	0.1	38.39	43.5	34.5	55.5	55.2	0.27	203.830	
200.0	200.0	200.0	200.0	0.3	0.3	38.39	43.5	34.5	55.5	54.9	0.62	89.319 CC, ES	
300.0	300.0	299.6	299.6	0.5	0.5	-152.79	43.2	35.1	58.0	57.0	0.97	59.701	
400.0	399.6	398.4	398.2	0.7	0.7	-151.46	41.3	39.8	66.3	65.0	1.34	49.354	
500.0	498.8	496.1	495.4	1.0	0.9	-148.67	37.3	49.1	80.7	78.9	1.77	45.478 SF	

Anticollision Report

Company:	EnCana Oil & Gas (USA) Inc	Local Co-ordinate Reference:	Well NP MF02A-9 O04 696 (was 18C-4)
Project:	North Piceance	TVD Reference:	KB MF18C-4 @ 6044.0ft (Original Well Elev)
Reference Site:	O04 696 (3rd)	MD Reference:	KB MF18C-4 @ 6044.0ft (Original Well Elev)
Site Error:	0.0ft	North Reference:	True
Reference Well:	NP MF02A-9 O04 696 (was 18C-4)	Survey Calculation Method:	Minimum Curvature
Well Error:	0.0ft	Output errors are at	2.00 sigma
Reference Wellbore	DD	Database:	EDM 5000.1 US Multi Users DB
Reference Design:	Plan #2	Offset TVD Reference:	Offset Datum

Offset Design O04 696 (3rd) - NP MF19C-3 O04 696 (was 20B-3) - DD - Plan #2													Offset Site Error: 0.0 ft
Survey Program: 0-MWD													Offset Well Error: 0.0 ft
Reference		Offset		Semi Major Axis			Distance						Warning
Measured Depth (ft)	Vertical Depth (ft)	Measured Depth (ft)	Vertical Depth (ft)	Reference (ft)	Offset (ft)	Highside Toolface (°)	Offset Wellbore Centre +N/-S (ft)	+E/-W (ft)	Between Centres (ft)	Between Ellipses (ft)	Total Uncertainty Axis	Separation Factor	
0.0	0.0	0.0	0.0	0.0	0.0	46.66	38.4	40.7	56.0				
100.0	100.0	100.0	100.0	0.1	0.1	46.66	38.4	40.7	56.0	55.7	0.27	205.696	
200.0	200.0	200.0	200.0	0.3	0.3	46.66	38.4	40.7	56.0	55.4	0.62	90.137 CC, ES	
300.0	300.0	299.1	299.1	0.5	0.5	-143.00	37.1	42.9	58.9	57.9	0.98	60.111	
400.0	399.6	397.7	397.3	0.7	0.7	-140.57	33.3	49.5	67.5	66.1	1.38	48.783	
500.0	498.8	495.2	494.0	1.0	1.0	-137.63	26.9	60.4	81.9	80.1	1.87	43.871 SF	

Anticollision Report

Company:	EnCana Oil & Gas (USA) Inc	Local Co-ordinate Reference:	Well NP MF02A-9 O04 696 (was 18C-4)
Project:	North Piceance	TVD Reference:	KB MF18C-4 @ 6044.0ft (Original Well Elev)
Reference Site:	O04 696 (3rd)	MD Reference:	KB MF18C-4 @ 6044.0ft (Original Well Elev)
Site Error:	0.0ft	North Reference:	True
Reference Well:	NP MF02A-9 O04 696 (was 18C-4)	Survey Calculation Method:	Minimum Curvature
Well Error:	0.0ft	Output errors are at	2.00 sigma
Reference Wellbore	DD	Database:	EDM 5000.1 US Multi Users DB
Reference Design:	Plan #2	Offset TVD Reference:	Offset Datum

Offset Design												Offset Site Error:		0.0 ft
Survey Program: 0-MWD												Offset Well Error:		0.0 ft
Reference		Offset		Semi Major Axis			Distance						Warning	
Measured Depth (ft)	Vertical Depth (ft)	Measured Depth (ft)	Vertical Depth (ft)	Reference (ft)	Offset (ft)	Highside Toolface (°)	Offset Wellbore Centre +N/-S (ft) +E/-W (ft)		Between Centres (ft)	Between Ellipses (ft)	Total Uncertainty Axis	Separation Factor		
0.0	0.0	0.0	0.0	0.0	0.0	37.75	28.3	21.9	35.8					
100.0	100.0	100.0	100.0	0.1	0.1	37.75	28.3	21.9	35.8	35.5	0.27	131.562		
200.0	200.0	200.0	200.0	0.3	0.3	37.75	28.3	21.9	35.8	35.2	0.62	57.651 CC, ES		
300.0	300.0	300.0	300.0	0.5	0.5	-154.63	28.3	21.9	38.2	37.2	0.97	39.298		
400.0	399.6	399.9	399.8	0.7	0.7	-158.00	27.9	22.4	45.3	43.9	1.32	34.178		
500.0	498.8	499.7	499.6	1.0	0.8	-157.63	24.3	26.2	56.4	54.7	1.70	33.200 SF		
600.0	597.1	598.9	598.2	1.4	1.1	-154.79	17.3	33.8	71.6	69.4	2.14	33.505		
700.0	694.3	696.3	694.5	1.8	1.4	-151.11	7.5	45.2	91.6	88.9	2.68	34.137		

Anticollision Report

Company:	EnCana Oil & Gas (USA) Inc	Local Co-ordinate Reference:	Well NP MF02A-9 O04 696 (was 18C-4)
Project:	North Piceance	TVD Reference:	KB MF18C-4 @ 6044.0ft (Original Well Elev)
Reference Site:	O04 696 (3rd)	MD Reference:	KB MF18C-4 @ 6044.0ft (Original Well Elev)
Site Error:	0.0ft	North Reference:	True
Reference Well:	NP MF02A-9 O04 696 (was 18C-4)	Survey Calculation Method:	Minimum Curvature
Well Error:	0.0ft	Output errors are at	2.00 sigma
Reference Wellbore	DD	Database:	EDM 5000.1 US Multi Users DB
Reference Design:	Plan #2	Offset TVD Reference:	Offset Datum

Offset Design													Offset Site Error:		0.0 ft
Survey Program: 0-MWD													Offset Well Error:		0.0 ft
Reference		Offset		Semi Major Axis			Distance						Warning		
Measured Depth (ft)	Vertical Depth (ft)	Measured Depth (ft)	Vertical Depth (ft)	Reference (ft)	Offset (ft)	Highside Toolface (°)	Offset Wellbore Centre +N/-S (ft) +E/-W (ft)		Between Centres (ft)	Between Ellipses (ft)	Total Uncertainty Axis	Separation Factor			
0.0	0.0	0.0	0.0	0.0	0.0	50.48	23.3	28.2	36.6						
100.0	100.0	100.0	100.0	0.1	0.1	50.48	23.3	28.2	36.6	36.3	0.27	134.260			
200.0	200.0	200.0	200.0	0.3	0.3	50.48	23.3	28.2	36.6	35.9	0.62	58.833 CC, ES			
300.0	300.0	299.5	299.4	0.5	0.5	-138.85	21.7	30.3	39.2	38.2	0.98	39.941			
400.0	399.6	398.5	398.2	0.7	0.7	-135.80	17.0	36.4	47.1	45.7	1.39	33.855			
500.0	498.8	496.7	495.5	1.0	1.0	-132.46	9.3	46.5	60.4	58.5	1.89	31.957			
600.0	597.1	593.6	590.8	1.4	1.3	-129.60	-1.2	60.4	79.1	76.6	2.50	31.603 SF			

Anticollision Report

Company:	EnCana Oil & Gas (USA) Inc	Local Co-ordinate Reference:	Well NP MF02A-9 O04 696 (was 18C-4)
Project:	North Piceance	TVD Reference:	KB MF18C-4 @ 6044.0ft (Original Well Elev)
Reference Site:	O04 696 (3rd)	MD Reference:	KB MF18C-4 @ 6044.0ft (Original Well Elev)
Site Error:	0.0ft	North Reference:	True
Reference Well:	NP MF02A-9 O04 696 (was 18C-4)	Survey Calculation Method:	Minimum Curvature
Well Error:	0.0ft	Output errors are at	2.00 sigma
Reference Wellbore	DD	Database:	EDM 5000.1 US Multi Users DB
Reference Design:	Plan #2	Offset TVD Reference:	Offset Datum

Offset Design O04 696 (3rd) - NP MF20F-3 O04 696 (was 20D-3) - DD - Plan #2													Offset Site Error: 0.0 ft
Survey Program: 0-MWD													Offset Well Error: 0.0 ft
Reference		Offset		Semi Major Axis		Distance							
Measured Depth (ft)	Vertical Depth (ft)	Measured Depth (ft)	Vertical Depth (ft)	Reference (ft)	Offset (ft)	Highside Toolface (°)	Offset Wellbore Centre +N/-S (ft)	+E/-W (ft)	Between Centres (ft)	Between Ellipses (ft)	Total Uncertainty Axis	Separation Factor	Warning
0.0	0.0	0.0	0.0	0.0	0.0	53.81	17.2	23.5	29.1				
100.0	100.0	100.0	100.0	0.1	0.1	53.81	17.2	23.5	29.1	28.8	0.27	106.937	
200.0	200.0	200.0	200.0	0.3	0.3	53.81	17.2	23.5	29.1	28.5	0.62	46.860	CC, ES
300.0	300.0	299.8	299.7	0.5	0.5	-135.30	15.3	25.3	31.3	30.3	0.98	31.882	
400.0	399.6	399.2	398.9	0.7	0.7	-131.79	9.5	30.5	38.0	36.6	1.40	27.153	
500.0	498.8	498.1	496.9	1.0	1.0	-128.04	0.0	39.1	49.3	47.4	1.92	25.718	
600.0	597.1	595.9	593.1	1.4	1.3	-124.90	-13.0	51.0	65.2	62.6	2.56	25.462	SF
700.0	694.3	692.6	687.2	1.8	1.8	-122.47	-29.5	66.1	85.6	82.3	3.34	25.623	

Anticollision Report

Company:	EnCana Oil & Gas (USA) Inc	Local Co-ordinate Reference:	Well NP MF02A-9 O04 696 (was 18C-4)
Project:	North Piceance	TVD Reference:	KB MF18C-4 @ 6044.0ft (Original Well Elev)
Reference Site:	O04 696 (3rd)	MD Reference:	KB MF18C-4 @ 6044.0ft (Original Well Elev)
Site Error:	0.0ft	North Reference:	True
Reference Well:	NP MF02A-9 O04 696 (was 18C-4)	Survey Calculation Method:	Minimum Curvature
Well Error:	0.0ft	Output errors are at	2.00 sigma
Reference Wellbore	DD	Database:	EDM 5000.1 US Multi Users DB
Reference Design:	Plan #2	Offset TVD Reference:	Offset Datum

Reference Depths are relative to KB MF18C-4 @ 6044.0ft (Original We
Offset Depths are relative to Offset Datum
Central Meridian is 105° 30' 0.00 W °

Coordinates are relative to: NP MF02A-9 O04 696 (was 18C-4)
Coordinate System is US State Plane 1983, Colorado Central Zone
Grid Convergence at Surface is: -1.64°

