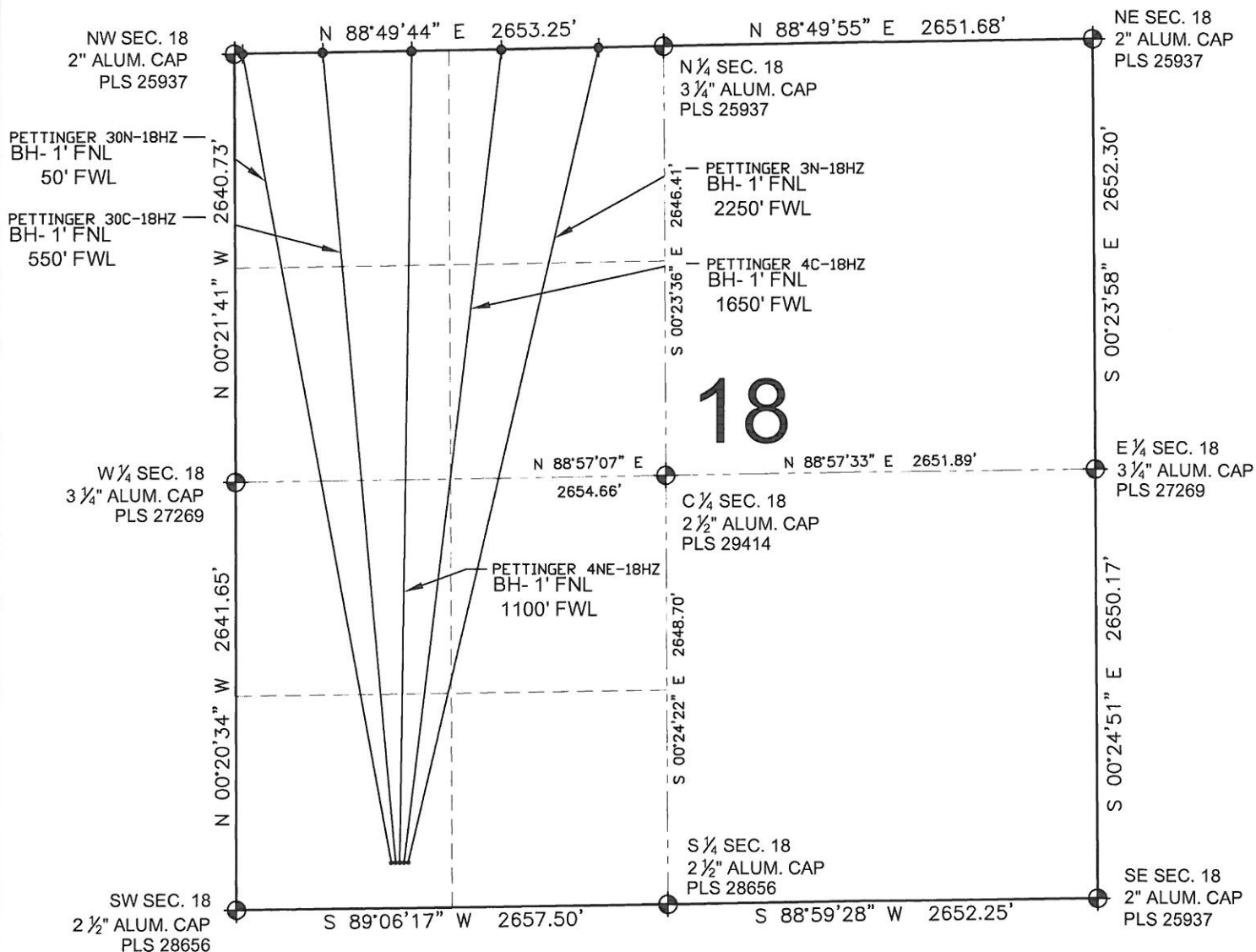


# PETTINGER 4NE-18HZ MULTI-WELL PLAN

SECTION 18, TOWNSHIP 1 NORTH, RANGE 65 WEST, 6TH P.M.



## NOTES:

PETTINGER 30N-18HZ TO BE AT 283' FSL, 958' FWL.  
BOTTOM HOLE AT 1' FNL & 50' FWL.  
PETTINGER 30C-18HZ TO BE AT 283' FSL, 984' FWL.  
BOTTOM HOLE AT 1' FNL & 550' FWL.  
PETTINGER 4NE-18HZ TO BE AT 283' FSL, 1010' FWL.  
BOTTOM HOLE AT 1' FNL & 1100' FWL.  
PETTINGER 4C-18HZ TO BE AT 283' FSL, 1036' FWL.  
BOTTOM HOLE AT 1' FNL & 1650' FWL.  
PETTINGER 3N-18HZ TO BE AT 283' FSL, 1062' FWL.  
BOTTOM HOLE AT 1' FNL & 2250' FWL.

## LEGEND

⊕ = EXISTING MONUMENT    ♦ = BOTTOM HOLE    BH= BOTTOM HOLE  
• = PROPOSED WELL    ♦ = EXISTING WELL

PREPARED BY:



KERR-MCGEE OIL & GAS ONSHORE LP

FIELD DATE:  
03-18-13

DRAWING DATE:  
06-28-13

SURFACE LOCATION:

SW 1/4 SW 1/4, SEC. 18, T1N, R65W, 6TH P.M.  
WELD COUNTY, COLORADO

