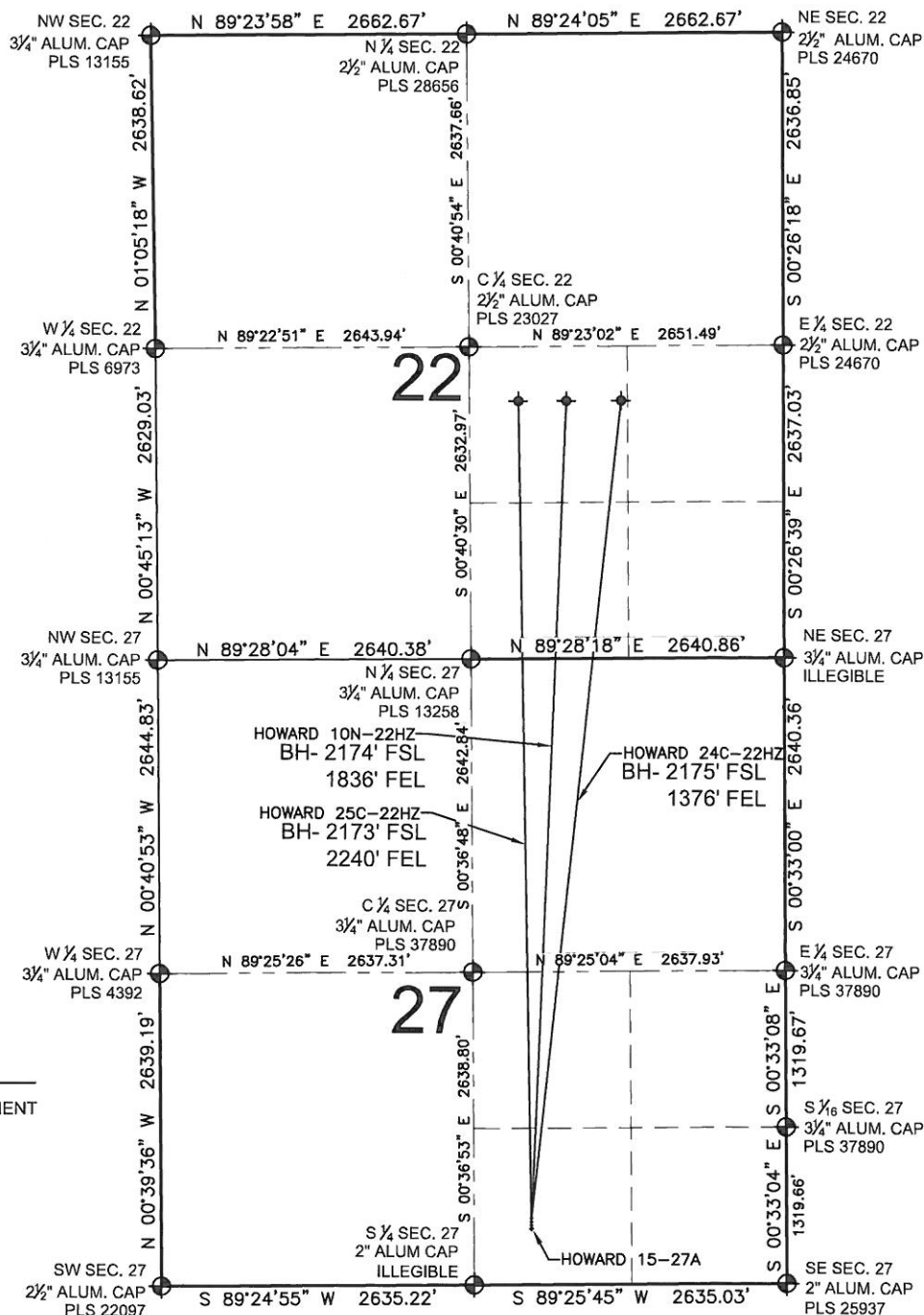


HOWARD 25C-22HZ MULTI-WELL PLAN

SECTION 27, TOWNSHIP 1 NORTH, RANGE 67 WEST, 6TH P.M.



LEGEND

- ⊙ = EXISTING MONUMENT
- = PROPOSED WELL
- ◆ = BOTTOM HOLE
- BH = BOTTOM HOLE

NOTES:

HOWARD 25C-22HZ TO BE AT 501' FSL, 2158' FEL.
 BOTTOM HOLE AT 2173' FSL & 2240' FEL, SEC. 22
 HOWARD 10N-22HZ TO BE AT 531' FSL, 2158' FEL.
 BOTTOM HOLE AT 2174' FSL & 1836' FEL, SEC. 22
 HOWARD 24C-22HZ TO BE AT 561' FSL, 2158' FEL.
 BOTTOM HOLE AT 2175' FSL & 1376' FEL, SEC. 22
 HOWARD 15-27A IS AT 471' FSL, 2158' FEL.

PREPARED BY:

PFS



Petroleum Field Services, LLC
 1801 W. 13th Ave.
 Denver, CO 80204

KERR-MCGEE OIL & GAS ONSHORE LP

FIELD DATE:
01-15-13

DRAWING DATE:
05-17-13

SURFACE LOCATION:

SW 1/4 SE 1/4, SEC. 27, T1N, R67W, 6TH P.M.
 WELD COUNTY, COLORADO

