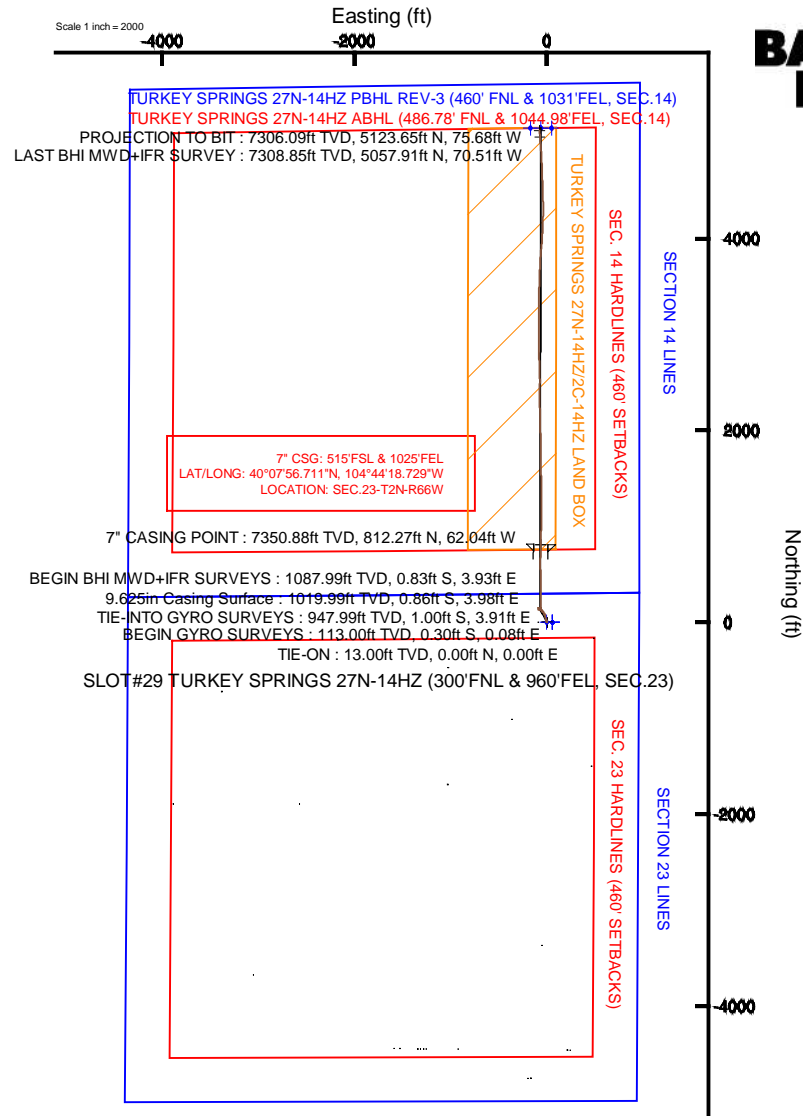
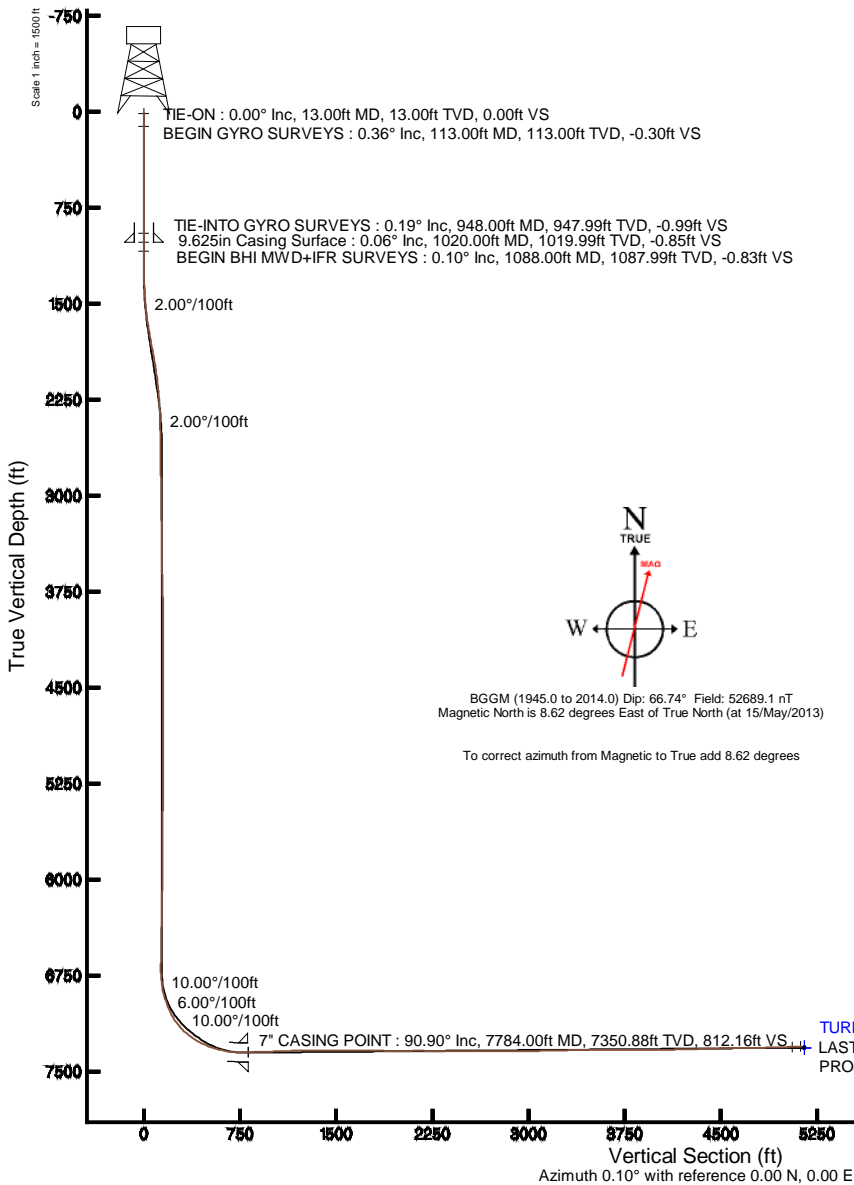


KERR-MCGEE OIL & GAS ONSHORE LP

Location: COLORADO Slot: SLOT#29 TURKEY SPRINGS 27N-14HZ (300'FNL & 960'FEL, SEC.23)
 Field: WELD COUNTY (KERR MCGEE) Well: TURKEY SPRINGS 27N-14HZ
 Facility: SEC.23-T2N-R66W Wellbore: TURKEY SPRINGS 27N-14HZ PWB

Plot reference wellpath is TURKEY SPRINGS 27N-14HZ (REV-C.0) PWB	
True vertical depths are referenced to ENSGIN 138 (RKB)	Grid System: NAD83 / Lambert Colorado SP, Northern Zone (501), US feet
Measured depths are referenced to ENSGIN 138 (RKB)	North Reference: True north
ENSGIN 138 (RKB) to Mean Sea Level: 5115 feet	Scale: True distance
Mean Sea Level to Mud line (At Slot: SLOT#29 TURKEY SPRINGS 27N-14HZ (300'FNL & 960'FEL, SEC.23)): 0 feet	Depths are in feet
Coordinates are in feet referenced to Slot	Created by: robale01 on 17/Jun/2013





Actual Wellpath Report

TURKEY SPRINGS 27N-14HZ AWP

Page 1 of 6



REFERENCE WELLPATH IDENTIFICATION			
Operator	KERR-MCGEE OIL & GAS ONSHORE LP	Slot	SLOT#29 TURKEY SPRINGS 27N-14HZ (300'FNL & 960'FEL, SEC.23)
Area	COLORADO	Well	TURKEY SPRINGS 27N-14HZ
Field	WELD COUNTY (KERR MCGEE)	Wellbore	TURKEY SPRINGS 27N-14HZ AWB
Facility	SEC.23-T2N-R66W		

REPORT SETUP INFORMATION			
Projection System	NAD83 / Lambert Colorado SP, Northern Zone (501), US feet	Software System	WellArchitect® 4.0.0
North Reference	True	User	Robiale01
Scale	0.999959	Report Generated	17/Jun/2013 at 15:32
Convergence at slot	n/a	Database/Source file	WA_ANADARKO/TURKEY_SPRINGS_27N-14HZ_AWB.xml

WELLPATH LOCATION						
	Local coordinates		Grid coordinates		Geographic coordinates	
	North[ft]	East[ft]	Easting[US ft]	Northing[US ft]	Latitude	Longitude
Slot Location	4750.30	165.60	3212979.11	1291186.70	40°07'48.684"N	104°44'17.930"W
Facility Reference Pt			3212854.29	1286435.36	40°07'01.741"N	104°44'20.062"W
Field Reference Pt			3197771.84	1268891.29	40°04'09.600"N	104°47'36.000"W

WELLPATH DATUM			
Calculation method	Minimum curvature	ENSGIN 138 (RKB) to Facility Vertical Datum	5115.00ft
Horizontal Reference Pt	Slot	ENSGIN 138 (RKB) to Mean Sea Level	5115.00ft
Vertical Reference Pt	ENSGIN 138 (RKB)	ENSGIN 138 (RKB) to Mud Line at Slot (SLOT#29 TURKEY SPRINGS 27N-14HZ (300'FNL & 960'FEL, SEC.23))	5115.00ft
MD Reference Pt	ENSGIN 138 (RKB)	Section Origin	N 0.00, E 0.00 ft
Field Vertical Reference	Mean Sea Level	Section Azimuth	359.15°



Actual Wellpath Report

TURKEY SPRINGS 27N-14HZ AWP

Page 2 of 6



REFERENCE WELLPATH IDENTIFICATION			
Operator	KERR-MCGEE OIL & GAS ONSHORE LP	Slot	SLOT#29 TURKEY SPRINGS 27N-14HZ (300'FNL & 960'FEL, SEC.23)
Area	COLORADO	Well	TURKEY SPRINGS 27N-14HZ
Field	WELD COUNTY (KERR MCGEE)	Wellbore	TURKEY SPRINGS 27N-14HZ AWB
Facility	SEC.23-T2N-R66W		

WELLPATH DATA (120 stations) † = interpolated/extrapolated station										
MD [ft]	Inclination [°]	Azimuth [°]	TVD [ft]	Vert Sect [ft]	North [ft]	East [ft]	Latitude	Longitude	DLS [°/100ft]	Comments
0.00†	0.000	165.410	0.00	0.00	0.00	0.00	40°07'48.684"N	104°44'17.930"W	0.00	
13.00	0.000	165.410	13.00	0.00	0.00	0.00	40°07'48.684"N	104°44'17.930"W	0.00	TIE-ON
113.00	0.360	165.410	113.00	-0.31	-0.30	0.08	40°07'48.681"N	104°44'17.929"W	0.36	BEGIN GYRO SURVEYS
213.00	0.210	144.360	213.00	-0.76	-0.76	0.27	40°07'48.677"N	104°44'17.927"W	0.18	
313.00	0.330	127.790	313.00	-1.09	-1.08	0.60	40°07'48.673"N	104°44'17.922"W	0.14	
413.00	0.450	98.790	412.99	-1.34	-1.32	1.22	40°07'48.671"N	104°44'17.914"W	0.23	
513.00	0.510	53.810	512.99	-1.14	-1.12	1.96	40°07'48.673"N	104°44'17.905"W	0.37	
613.00	0.280	75.080	612.99	-0.83	-0.79	2.56	40°07'48.676"N	104°44'17.897"W	0.27	
713.00	0.230	91.790	712.99	-0.78	-0.73	2.99	40°07'48.677"N	104°44'17.891"W	0.09	
813.00	0.280	135.580	812.99	-0.96	-0.91	3.37	40°07'48.675"N	104°44'17.887"W	0.20	
913.00	0.290	82.420	912.99	-1.11	-1.06	3.79	40°07'48.674"N	104°44'17.881"W	0.26	
948.00	0.190	36.220	947.99	-1.05	-1.00	3.91	40°07'48.674"N	104°44'17.880"W	0.60	TIE-INTO GYRO SURVEYS
1088.00	0.100	258.600	1087.99	-0.89	-0.83	3.93	40°07'48.676"N	104°44'17.879"W	0.19	BEGIN BHI MWD+IFR SURVEYS
1180.00	0.200	269.000	1179.99	-0.91	-0.85	3.69	40°07'48.676"N	104°44'17.883"W	0.11	
1271.00	1.600	334.000	1270.97	0.24	0.29	2.97	40°07'48.687"N	104°44'17.892"W	1.68	
1362.00	3.000	338.100	1361.90	3.61	3.64	1.53	40°07'48.720"N	104°44'17.910"W	1.55	
1472.00	5.000	331.800	1471.62	10.56	10.53	-1.81	40°07'48.788"N	104°44'17.953"W	1.86	
1564.00	6.700	339.300	1563.14	19.17	19.09	-5.60	40°07'48.873"N	104°44'18.002"W	2.02	
1655.00	8.700	345.800	1653.32	30.86	30.73	-9.17	40°07'48.988"N	104°44'18.048"W	2.39	
1747.00	10.600	347.600	1744.01	45.92	45.74	-12.69	40°07'49.136"N	104°44'18.093"W	2.09	
1838.00	10.700	348.000	1833.45	62.41	62.18	-16.25	40°07'49.298"N	104°44'18.139"W	0.14	
1929.00	10.700	338.400	1922.87	78.60	78.30	-21.11	40°07'49.458"N	104°44'18.202"W	1.96	
2021.00	10.200	329.900	2013.35	93.69	93.29	-28.34	40°07'49.606"N	104°44'18.295"W	1.76	
2112.00	8.400	324.300	2103.15	106.18	105.65	-36.26	40°07'49.728"N	104°44'18.397"W	2.21	
2203.00	7.400	311.000	2193.30	115.54	114.90	-44.57	40°07'49.819"N	104°44'18.504"W	2.28	
2294.00	5.400	305.400	2283.72	121.99	121.22	-52.48	40°07'49.882"N	104°44'18.606"W	2.30	
2384.00	3.400	305.400	2373.45	126.07	125.22	-58.11	40°07'49.921"N	104°44'18.678"W	2.22	
2475.00	2.800	292.700	2464.32	128.55	127.64	-62.36	40°07'49.945"N	104°44'18.733"W	1.00	
2566.00	2.600	291.700	2555.22	130.23	129.27	-66.33	40°07'49.961"N	104°44'18.784"W	0.23	
2657.00	2.300	290.600	2646.14	131.69	130.67	-69.95	40°07'49.975"N	104°44'18.831"W	0.33	
2840.00	2.000	287.200	2829.01	134.02	132.91	-76.44	40°07'49.997"N	104°44'18.914"W	0.18	
3022.00	2.300	303.000	3010.88	137.04	135.84	-82.54	40°07'50.026"N	104°44'18.993"W	0.36	
3203.00	0.900	286.300	3191.81	139.48	138.21	-86.95	40°07'50.050"N	104°44'19.049"W	0.81	
3393.00	1.000	303.300	3381.78	140.85	139.54	-89.77	40°07'50.063"N	104°44'19.086"W	0.16	
3582.00	1.600	45.700	3570.75	143.59	142.29	-89.26	40°07'50.090"N	104°44'19.079"W	1.09	
3772.00	1.800	9.700	3760.67	148.35	147.08	-86.86	40°07'50.138"N	104°44'19.048"W	0.56	
3961.00	0.800	13.530	3949.62	152.55	151.29	-86.05	40°07'50.179"N	104°44'19.038"W	0.53	
4153.00	0.700	125.600	4141.61	153.15	151.91	-84.78	40°07'50.185"N	104°44'19.021"W	0.65	
4345.00	0.500	36.100	4333.61	153.12	151.91	-83.33	40°07'50.185"N	104°44'19.003"W	0.45	
4534.00	0.700	242.000	4522.60	153.25	152.03	-83.87	40°07'50.186"N	104°44'19.010"W	0.62	
4630.00	0.800	337.900	4618.60	153.61	152.38	-84.64	40°07'50.190"N	104°44'19.020"W	1.16	
4724.00	0.900	93.700	4712.59	154.16	152.94	-84.15	40°07'50.195"N	104°44'19.013"W	1.53	
4818.00	1.500	118.100	4806.57	153.51	152.31	-82.32	40°07'50.189"N	104°44'18.990"W	0.82	
5007.00	1.200	89.100	4995.52	152.32	151.18	-78.16	40°07'50.178"N	104°44'18.936"W	0.39	
5195.00	1.100	72.900	5183.48	152.82	151.74	-74.47	40°07'50.183"N	104°44'18.889"W	0.18	



Actual Wellpath Report

TURKEY SPRINGS 27N-14HZ AWP

Page 3 of 6



REFERENCE WELLPATH IDENTIFICATION			
Operator	KERR-MCGEE OIL & GAS ONSHORE LP	Slot	SLOT#29 TURKEY SPRINGS 27N-14HZ (300'FNL & 960'FEL, SEC.23)
Area	COLORADO	Well	TURKEY SPRINGS 27N-14HZ
Field	WELD COUNTY (KERR MCGEE)	Wellbore	TURKEY SPRINGS 27N-14HZ AWB
Facility	SEC.23-T2N-R66W		

WELLPATH DATA (120 stations) † = interpolated/extrapolated station

MD [ft]	Inclination [°]	Azimuth [°]	TVD [ft]	Vert Sect [ft]	North [ft]	East [ft]	Latitude	Longitude	DLS [°/100ft]	Comments
5291.00	1.400	143.800	5279.46	152.12	151.06	-72.90	40°07'50.177"N	104°44'18.868"W	1.53	
5480.00	1.100	124.700	5468.42	149.19	148.17	-70.04	40°07'50.148"N	104°44'18.832"W	0.27	
5670.00	0.700	105.200	5658.40	147.80	146.82	-67.42	40°07'50.135"N	104°44'18.798"W	0.26	
5862.00	0.600	116.900	5850.38	147.01	146.06	-65.39	40°07'50.127"N	104°44'18.772"W	0.09	
6054.00	1.000	176.000	6042.37	144.87	143.94	-64.38	40°07'50.106"N	104°44'18.759"W	0.45	
6244.00	1.000	190.400	6232.34	141.59	140.65	-64.56	40°07'50.074"N	104°44'18.761"W	0.13	
6435.00	1.200	153.400	6423.31	138.15	137.22	-63.97	40°07'50.040"N	104°44'18.754"W	0.38	
6530.00	1.400	154.700	6518.28	136.20	135.29	-63.03	40°07'50.021"N	104°44'18.741"W	0.21	
6658.00	0.800	130.800	6646.26	134.18	133.29	-61.68	40°07'50.001"N	104°44'18.724"W	0.58	
6721.00	0.500	86.500	6709.25	133.90	133.02	-61.08	40°07'49.998"N	104°44'18.716"W	0.89	
6768.00	3.600	5.400	6756.22	135.38	134.50	-60.73	40°07'50.013"N	104°44'18.712"W	7.57	
6816.00	6.900	358.500	6804.02	139.76	138.88	-60.67	40°07'50.056"N	104°44'18.711"W	6.99	
6863.00	10.500	357.100	6850.47	146.87	145.98	-60.96	40°07'50.127"N	104°44'18.715"W	7.67	
6911.00	14.400	358.400	6897.33	157.21	156.32	-61.34	40°07'50.229"N	104°44'18.720"W	8.15	
6958.00	17.700	358.900	6942.49	170.20	169.31	-61.64	40°07'50.357"N	104°44'18.724"W	7.03	
7006.00	21.600	0.600	6987.69	186.34	185.45	-61.69	40°07'50.517"N	104°44'18.724"W	8.21	
7053.00	24.800	1.700	7030.88	204.84	203.96	-61.31	40°07'50.700"N	104°44'18.719"W	6.87	
7101.00	29.500	1.800	7073.58	226.71	225.84	-60.64	40°07'50.916"N	104°44'18.711"W	9.79	
7148.00	34.500	0.100	7113.43	251.60	250.74	-60.25	40°07'51.162"N	104°44'18.706"W	10.81	
7196.00	41.000	358.000	7151.36	280.97	280.10	-60.78	40°07'51.452"N	104°44'18.712"W	13.80	
7243.00	47.600	358.800	7184.98	313.77	312.89	-61.68	40°07'51.776"N	104°44'18.724"W	14.09	
7290.00	51.800	0.400	7215.37	349.60	348.73	-61.91	40°07'52.130"N	104°44'18.727"W	9.31	
7337.00	56.200	0.900	7242.99	387.61	386.74	-61.48	40°07'52.506"N	104°44'18.722"W	9.40	
7384.00	60.900	359.300	7267.51	427.68	426.82	-61.42	40°07'52.902"N	104°44'18.721"W	10.41	
7431.00	65.200	358.200	7288.81	469.57	468.70	-62.34	40°07'53.316"N	104°44'18.733"W	9.38	
7479.00	69.000	358.000	7307.48	513.77	512.88	-63.81	40°07'53.752"N	104°44'18.752"W	7.93	
7525.00	72.900	356.000	7322.49	557.21	556.29	-66.10	40°07'54.181"N	104°44'18.781"W	9.42	
7573.00	77.200	359.800	7334.88	603.55	602.61	-67.78	40°07'54.639"N	104°44'18.803"W	11.78	
7620.00	80.900	2.900	7343.81	649.65	648.73	-66.68	40°07'55.095"N	104°44'18.789"W	10.19	
7669.00	85.800	1.700	7349.48	698.23	697.35	-64.73	40°07'55.575"N	104°44'18.763"W	10.29	
7716.00	89.600	1.200	7351.36	745.14	744.29	-63.55	40°07'56.039"N	104°44'18.748"W	8.15	
7741.00	90.400	1.300	7351.36	770.13	769.28	-63.00	40°07'56.286"N	104°44'18.741"W	3.22	
7784.00†	90.903	1.272	7350.88	813.09	812.27	-62.04	40°07'56.711"N	104°44'18.729"W	1.17	7" CASING POINT
7895.00	92.200	1.200	7347.87	923.98	923.20	-59.64	40°07'57.807"N	104°44'18.698"W	1.17	
7990.00	92.000	0.300	7344.39	1018.88	1018.12	-58.40	40°07'58.745"N	104°44'18.682"W	0.97	
8085.00	91.900	359.300	7341.16	1113.81	1113.07	-58.73	40°07'59.683"N	104°44'18.686"W	1.06	
8179.00	90.400	2.000	7339.27	1207.75	1207.03	-57.66	40°08'00.612"N	104°44'18.672"W	3.29	
8273.00	89.800	359.200	7339.11	1301.71	1301.02	-56.68	40°08'01.541"N	104°44'18.660"W	3.05	
8368.00	89.800	0.200	7339.44	1396.70	1396.01	-57.18	40°08'02.480"N	104°44'18.666"W	1.05	
8462.00	90.300	358.700	7339.36	1490.70	1490.01	-58.08	40°08'03.408"N	104°44'18.678"W	1.68	
8651.00	90.300	359.100	7338.37	1679.70	1678.97	-61.71	40°08'05.276"N	104°44'18.724"W	0.21	
8746.00	89.400	0.200	7338.61	1774.69	1773.96	-62.29	40°08'06.214"N	104°44'18.732"W	1.50	
8840.00	89.100	358.400	7339.85	1868.68	1867.94	-63.44	40°08'07.143"N	104°44'18.747"W	1.94	
9030.00	90.700	359.500	7340.18	2058.67	2057.90	-66.92	40°08'09.020"N	104°44'18.792"W	1.02	
9125.00	89.800	357.700	7339.76	2153.66	2152.87	-69.24	40°08'09.959"N	104°44'18.821"W	2.12	



Actual Wellpath Report

TURKEY SPRINGS 27N-14HZ AWP

Page 4 of 6



REFERENCE WELLPATH IDENTIFICATION

Operator	KERR-MCGEE OIL & GAS ONSHORE LP	Slot	SLOT#29 TURKEY SPRINGS 27N-14HZ (300'FNL & 960'FEL, SEC.23)
Area	COLORADO	Well	TURKEY SPRINGS 27N-14HZ
Field	WELD COUNTY (KERR MCGEE)	Wellbore	TURKEY SPRINGS 27N-14HZ AWB
Facility	SEC.23-T2N-R66W		

WELLPATH DATA (120 stations)

MD [ft]	Inclination [°]	Azimuth [°]	TVD [ft]	Vert Sect [ft]	North [ft]	East [ft]	Latitude	Longitude	DLS [°/100ft]	Comments
9220.00	89.600	357.600	7340.26	2248.62	2247.79	-73.13	40°08'10.897"N	104°44'18.872"W	0.24	
9315.00	89.700	0.400	7340.84	2343.61	2342.76	-74.79	40°08'11.835"N	104°44'18.893"W	2.95	
9410.00	90.000	1.500	7341.09	2438.56	2437.75	-73.22	40°08'12.774"N	104°44'18.873"W	1.20	
9504.00	90.100	359.500	7341.01	2532.53	2531.74	-72.40	40°08'13.703"N	104°44'18.862"W	2.13	
9598.00	89.700	356.900	7341.17	2626.51	2625.68	-75.35	40°08'14.631"N	104°44'18.900"W	2.80	
9694.00	89.500	358.700	7341.84	2722.48	2721.61	-79.03	40°08'15.579"N	104°44'18.948"W	1.89	
9884.00	90.500	359.900	7341.84	2912.47	2911.59	-81.36	40°08'17.457"N	104°44'18.978"W	0.82	
9979.00	90.400	1.100	7341.10	3007.44	3006.58	-80.53	40°08'18.395"N	104°44'18.967"W	1.27	
10074.00	91.300	357.500	7339.69	3102.41	3101.54	-81.69	40°08'19.334"N	104°44'18.982"W	3.91	
10168.00	91.500	359.600	7337.39	3196.37	3195.48	-84.06	40°08'20.262"N	104°44'19.012"W	2.24	
10263.00	91.200	1.700	7335.15	3291.31	3290.44	-82.99	40°08'21.200"N	104°44'18.999"W	2.23	
10359.00	90.000	0.100	7334.14	3387.25	3386.42	-81.48	40°08'22.149"N	104°44'18.979"W	2.08	
10453.00	90.000	2.300	7334.14	3481.19	3480.39	-79.51	40°08'23.078"N	104°44'18.954"W	2.34	
10549.00	89.800	1.300	7334.31	3577.09	3576.35	-76.50	40°08'24.026"N	104°44'18.915"W	1.06	
10643.00	90.500	3.400	7334.07	3670.93	3670.26	-72.64	40°08'24.954"N	104°44'18.865"W	2.35	
10738.00	90.500	2.100	7333.24	3765.74	3765.15	-68.08	40°08'25.892"N	104°44'18.807"W	1.37	
10832.00	90.400	6.000	7332.50	3859.38	3858.89	-61.45	40°08'26.818"N	104°44'18.721"W	4.15	
10927.00	90.400	5.400	7331.84	3953.75	3953.42	-52.01	40°08'27.752"N	104°44'18.600"W	0.63	
11024.00	90.700	1.800	7330.90	4050.44	4050.21	-45.92	40°08'28.708"N	104°44'18.521"W	3.72	
11118.00	90.500	2.400	7329.92	4144.31	4144.14	-42.48	40°08'29.637"N	104°44'18.477"W	0.67	
11213.00	91.800	1.800	7328.01	4239.16	4239.05	-39.00	40°08'30.575"N	104°44'18.432"W	1.51	
11309.00	92.100	359.100	7324.75	4335.08	4334.98	-38.24	40°08'31.523"N	104°44'18.422"W	2.83	
11404.00	91.800	358.300	7321.51	4430.02	4429.90	-40.40	40°08'32.461"N	104°44'18.450"W	0.90	
11500.00	90.900	358.500	7319.25	4525.98	4525.84	-43.08	40°08'33.409"N	104°44'18.485"W	0.96	
11596.00	91.200	357.800	7317.49	4621.95	4621.77	-46.18	40°08'34.357"N	104°44'18.525"W	0.79	
11691.00	90.400	358.100	7316.17	4716.92	4716.70	-49.57	40°08'35.295"N	104°44'18.568"W	0.90	
11786.00	90.600	357.500	7315.34	4811.89	4811.63	-53.22	40°08'36.233"N	104°44'18.615"W	0.67	
11881.00	91.300	355.700	7313.76	4906.78	4906.44	-58.85	40°08'37.170"N	104°44'18.688"W	2.03	
12033.00	92.400	355.500	7308.85	5058.40	5057.91	-70.51	40°08'38.667"N	104°44'18.838"W	0.74	LAST BHI MWD+IFR SURVEY
12099.00	92.400	355.500	7306.09	5124.21	5123.65	-75.68	40°08'39.316"N	104°44'18.905"W	0.00	PROJECTION TO BIT

HOLE & CASING SECTIONS - Ref Wellbore: TURKEY SPRINGS 27N-14HZ AWB Ref Wellpath: TURKEY SPRINGS 27N-14HZ AWP

String/Diameter	Start MD [ft]	End MD [ft]	Interval [ft]	Start TVD [ft]	End TVD [ft]	Start N/S [ft]	Start E/W [ft]	End N/S [ft]	End E/W [ft]
12.25in Open Hole	13.00	1020.00	1007.00	13.00	1019.99	0.00	0.00	-0.86	3.98
9.625in Casing Surface	13.00	1020.00	1007.00	13.00	1019.99	0.00	0.00	-0.86	3.98
8.75in Open Hole	1020.00	7794.00	6774.00	1019.99	7350.71	-0.86	3.98	822.26	-61.81
7in Casing Intermediate	13.00	7784.00	7771.00	13.00	7350.88	0.00	0.00	812.27	-62.04
6.125in Open Hole	7794.00	12099.00	4305.00	7350.71	7306.09	822.26	-61.81	5123.65	-75.68



Actual Wellpath Report

TURKEY SPRINGS 27N-14HZ AWP

Page 5 of 6



REFERENCE WELLPATH IDENTIFICATION			
Operator	KERR-MCGEE OIL & GAS ONSHORE LP	Slot	SLOT#29 TURKEY SPRINGS 27N-14HZ (300'FNL & 960'FEL, SEC.23)
Area	COLORADO	Well	TURKEY SPRINGS 27N-14HZ
Field	WELD COUNTY (KERR MCGEE)	Wellbore	TURKEY SPRINGS 27N-14HZ AWB
Facility	SEC.23-T2N-R66W		

TARGETS									
Name	MD [ft]	TVD [ft]	North [ft]	East [ft]	Grid East [US ft]	Grid North [US ft]	Latitude	Longitude	Shape
SECTION 14 LINES		0.00	0.40	60.12	3213039.23	1291187.62	40°07'48.688"N	104°44'17.156"W	polygon
SECTION 23 LINES		0.00	0.40	60.12	3213039.23	1291187.62	40°07'48.688"N	104°44'17.156"W	polygon
SEC. 14 HARDLINES (460' SETBACKS)		7000.00	0.40	60.12	3213039.23	1291187.62	40°07'48.688"N	104°44'17.156"W	polygon
SEC. 23 HARDLINES (460' SETBACKS)		7000.00	0.40	60.12	3213039.23	1291187.62	40°07'48.688"N	104°44'17.156"W	polygon
TURKEY SPRINGS 27N-14HZ BHL ON PLAT REV-1 (460' FNL & 1141'FEL, SEC.14)		7315.00	5150.43	-171.70	3212763.19	1296335.24	40°08'39.581"N	104°44'20.141"W	point
TURKEY SPRINGS 27N-14HZ BHL REV-2 (460' FNL & 921'FEL, SEC.14)		7315.00	5150.43	48.30	3212983.17	1296337.13	40°08'39.581"N	104°44'17.308"W	point
TURKEY SPRINGS 27N-14HZ BHL REV-3 (460' FNL & 1031'FEL, SEC.14)		7315.00	5150.43	-61.70	3212873.18	1296336.19	40°08'39.581"N	104°44'18.724"W	point
TURKEY SPRINGS 27N-14HZ/2C-14HZ LAND BOX		8000.00	0.00	0.00	3212979.11	1291186.70	40°07'48.684"N	104°44'17.930"W	polygon

WELLPATH COMPOSITION - Ref Wellbore: TURKEY SPRINGS 27N-14HZ AWB Ref Wellpath: TURKEY SPRINGS 27N-14HZ AWP				
Start MD [ft]	End MD [ft]	Positional Uncertainty Model	Log Name/Comment	Wellbore
13.00	948.00	Generic gyro - continuous (Standard)	MS GYRO SURVEYS <113-948>	TURKEY SPRINGS 27N-14HZ AWB
948.00	7741.00	NaviTrak (MAGCORR,IFR)	BHI MWD+IFR SURVEYS 8 3/4" HOLE <1088-7741>	TURKEY SPRINGS 27N-14HZ AWB
7741.00	12033.00	OnTrak (MAGCORR,IFR)	BHI MWD+IFR SURVEYS 6 1/8" HOLE <7895-12033>	TURKEY SPRINGS 27N-14HZ AWB
12033.00	12099.00	Blind Drilling (std)	Projection to bit	TURKEY SPRINGS 27N-14HZ AWB



Actual Wellpath Report

TURKEY SPRINGS 27N-14HZ AWP

Page 6 of 6



REFERENCE WELLPATH IDENTIFICATION			
Operator	KERR-MCGEE OIL & GAS ONSHORE LP	Slot	SLOT#29 TURKEY SPRINGS 27N-14HZ (300'FNL & 960'FEL, SEC.23)
Area	COLORADO	Well	TURKEY SPRINGS 27N-14HZ
Field	WELD COUNTY (KERR MCGEE)	Wellbore	TURKEY SPRINGS 27N-14HZ AWB
Facility	SEC.23-T2N-R66W		

WELLPATH COMMENTS				
MD [ft]	Inclination [°]	Azimuth [°]	TVD [ft]	Comment
13.00	0.000	165.410	13.00	TIE-ON
113.00	0.360	165.410	113.00	BEGIN GYRO SURVEYS
948.00	0.190	36.220	947.99	TIE-INTO GYRO SURVEYS
1088.00	0.100	258.600	1087.99	BEGIN BHI MWD+IFR SURVEYS
7784.00	90.903	1.272	7350.88	7" CASING POINT
12033.00	92.400	355.500	7308.85	LAST BHI MWD+IFR SURVEY
12099.00	92.400	355.500	7306.09	PROJECTION TO BIT