



Weatherford®

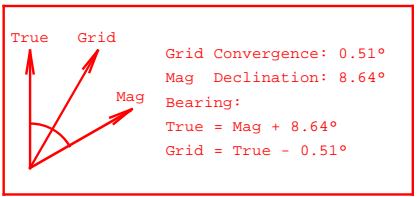
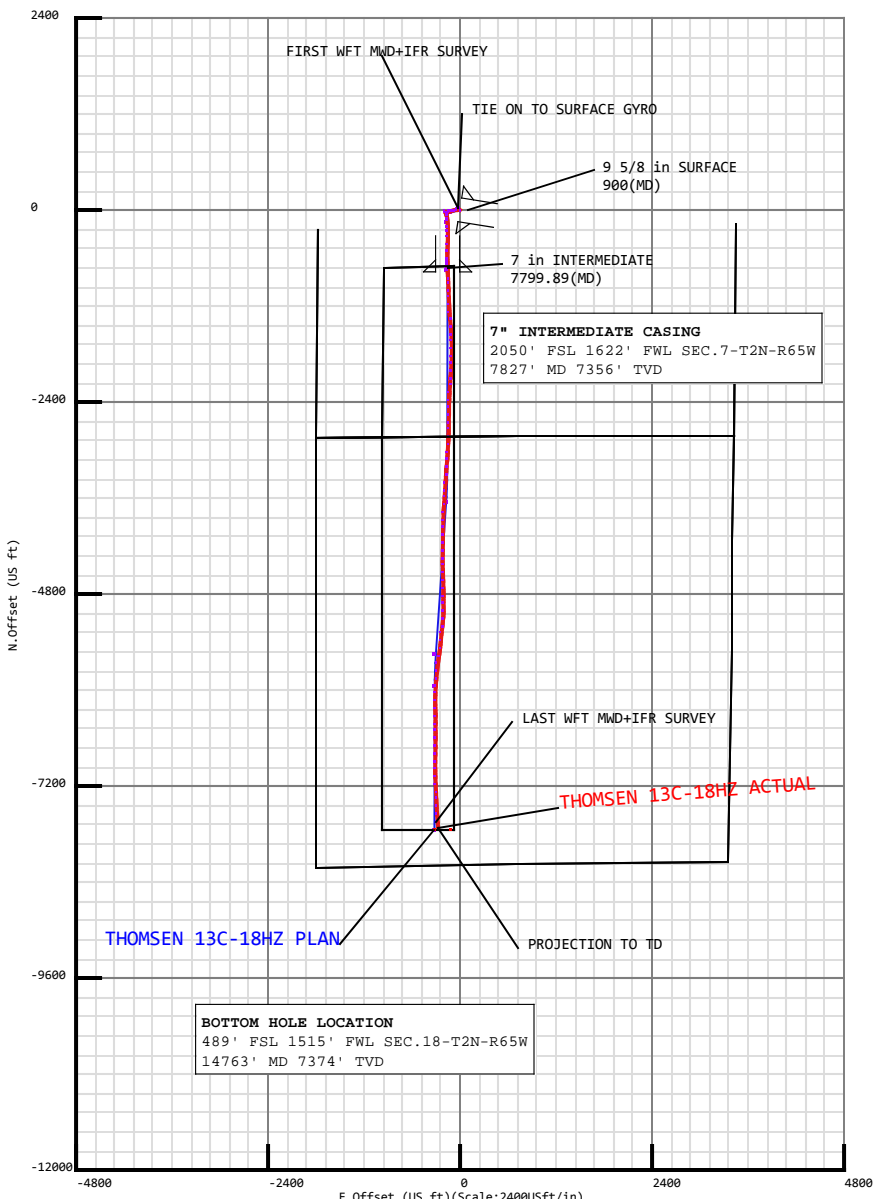


END OF WELL REPORT

FINAL SURVEYS	SECTION 1
DAILY ACTIVITIES	SECTION 2
BHA REPORTS	SECTION 3
MOTOR REPORTS	SECTION 4
SLIDE SHEET REPORTS	SECTION 5
ADDITIONAL REPORTS	SECTION 6



FINAL SURVEYS



Survey Data for THOMSEN 13C-18HZ

Field: Wattenberg
Map Unit: USFt Vertical Reference Datum (VRD): Mean Sea Level
Projected Coordinate System: NAD83 / Colorado North (ftUS)

Site: THOMSEN 6-7HZ Pad
Unit: USFeet TVD Reference:
Company Name: Andarko Petroleum
Position: Northing: 1299840.67USft Latitude: 40.153754°
Easting: 3220948.57USft Longitude: -104.709538°
North Reference: True Grid Convergence: 0.51°
Elevation Above VRD: 4952.00USft

Slot: THOMSEN 13C-18HZ
Position:
Offset is from Site centre
+N/-S: -0.00USft Northing: 1299840.67USft Latitude: 40.153754°
+E/-W: -0.00USft Easting: 3220948.57USft Longitude: -104.709538°
Elevation Above VRD: 4952.00USft

Casing Point Information:

Name	MD (USft)	TVD (USft)
95/8inSURFACE	900.00	899.99
7inINTERMEDIATE	7799.89	7375.00

Formation Point Information:

Name	TVD (USft)	Elevation (USft)	MD (USft)
SUSSEX	4610.00	367.00	4620.89
SHARONSPRINGS	7019.00	-2042.00	7050.07
TOPNIOBRARA	7091.00	-2114.00	7136.62
NIOBRARAB	7116.00	-2139.00	7168.52
NIOBRARAC	7214.00	-2237.00	7307.93
FORTHAYS	7348.00	-2371.00	7600.35
CODELL	7371.00	-2394.00	7721.88

Target Set Information:

Name: 13C-18HZ

Position offsets from Slot centre

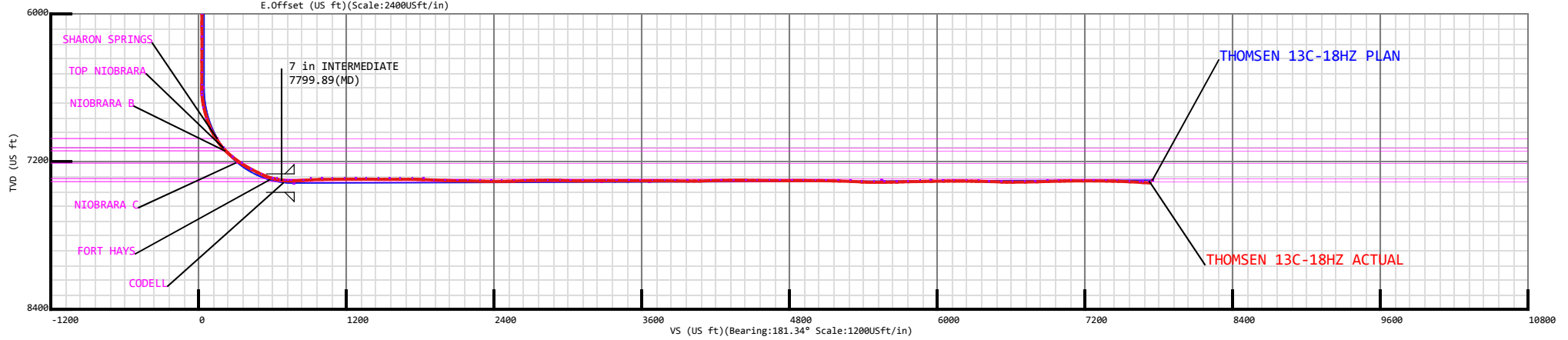
Name	TVD (USft)	+N/-S (USft)	+E/-W (USft)	Lat (°)	Long (°)	Shape
13C-18HZPBHL	7352.00	0.00	0.00	40.132474	-104.709955	Cuboid
13C-18HZRev.PBHL	7352.00	0.00	0.00	40.132474	-104.710678	Cuboid

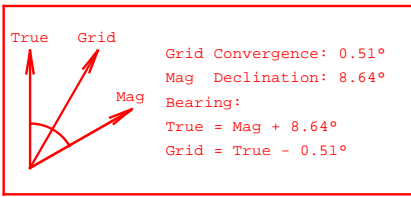
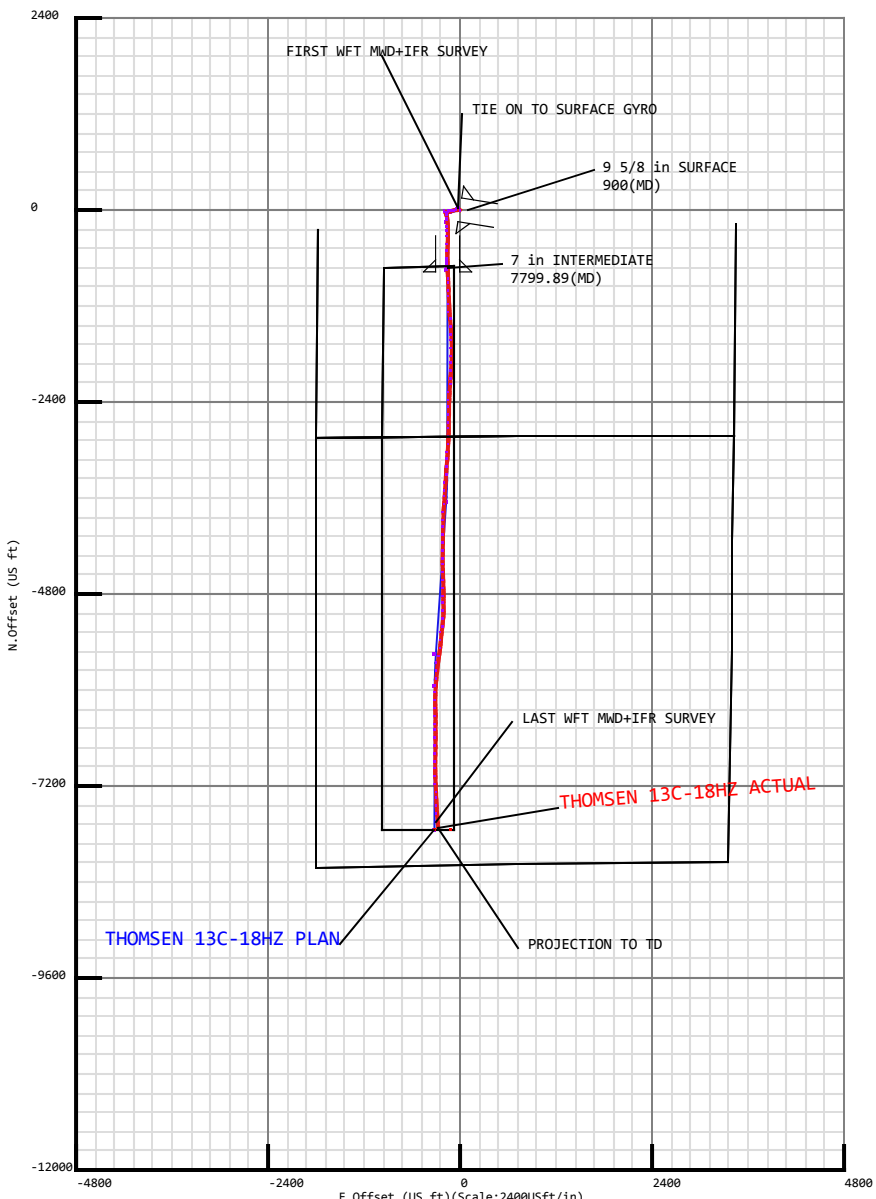
Survey Data for THOMSEN 13C-18HZ

Survey Point Information:

DogLeg Severity Unit: °/100.00ft

MD (USft)	Inc (°)	Az (°)	TVD (USft)	+N/-S (USft)	+E/-W (USft)	VSec (USft)	DLS (DLSU)	Toolface (°)	Build (DLSU)	Turn (DLSU)	Annotation
825.00	0.26	279.07	824.99	1.70	-2.09	-1.65	0.39	138.5R	-0.06	83.99	TIE ON TO SURFACE GYRO
983.00	0.20	239.01	982.99	1.61	-2.68	-1.55	0.11	129.7L	-0.04	-25.35	FIRST WFT MWD+IFR SURVEY
14710.00	86.42	175.57	7370.74	-7672.82	-276.18	7677.18	1.32	122.3L	-0.71	-1.12	LAST WFT MWD+IFR SURVEY
14763.00	86.42	175.57	7374.04	-7725.56	-272.09	7729.81	0.00	0.0R	0.00	0.00	PROJECTION TO TD





Survey Data for THOMSEN 13C-18HZ

Field: Wattenberg
 Map Unit: USFt Vertical Reference Datum (VRD): Mean Sea Level
 Projected Coordinate System: NAD83 / Colorado North (ftUS)

Site: THOMSEN 6-7HZ Pad
 Unit: USFeet TVD Reference:
 Company Name: Andarko Petroleum
 Position: Northing: 1299840.67USft Latitude: 40.153754°
 Easting: 3220948.57USft Longitude: -104.709538°
 North Reference: True Grid Convergence: 0.51°
 Elevation Above VRD: 4952.00USft

Slot: THOMSEN 13C-18HZ
 Position:
 Offset is from Site centre
 +N/-S: -0.00USft Northing: 1299840.67USft Latitude: 40.153754°
 +E/-W: -0.00USft Easting: 3220948.57USft Longitude: -104.709538°
 Elevation Above VRD: 4952.00USft



Casing Point Information:

Name	MD (USft)	TVD (USft)
95/8inSURFACE	900.00	899.99
7inINTERMEDIATE	7799.89	7375.00

Formation Point Information:

Name	TVD (USft)	Elevation (USft)	MD (USft)
SUSSEX	4610.00	367.00	4620.89
SHARONSPRINGS	7019.00	-2042.00	7050.07
TOPNIOBRARA	7091.00	-2114.00	7136.62
NIOBRARAB	7116.00	-2139.00	7168.52
NIOBRARAC	7214.00	-2237.00	7307.93
FORTHAYS	7348.00	-2371.00	7600.35
CODELL	7371.00	-2394.00	7721.88

Target Set Information:

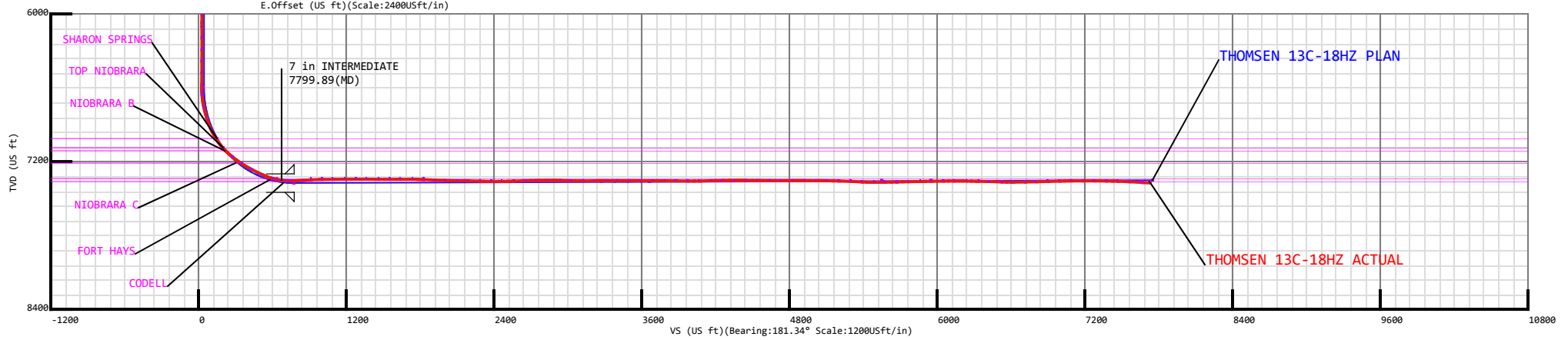
Name: 13C-18HZ
 Position offsets from Slot centre

Name	TVD (USft)	+N/-S (USft)	+E/-W (USft)	Lat (°)	Long (°)	Shape
13C-18HZPBHL	7352.00	0.00	0.00	40.132474	-104.709955	Cuboid
13C-18HZRev.PBHL	7352.00	0.00	0.00	40.132474	-104.710678	Cuboid

Survey Data for THOMSEN 13C-18HZ

Survey Point Information:
 DogLeg Severity Unit: °/100.00ft

MD (USft)	Inc (°)	Az (°)	TVD (USft)	+N/-S (USft)	+E/-W (USft)	VSec (USft)	DLS (DLSU)	Toolface (°)	Build (DLSU)	Turn (DLSU)	Annotation
825.00	0.26	279.07	824.99	1.70	-2.09	-1.65	0.39	138.5R	-0.06	83.99	TIE ON TO SURFACE GYRO
983.00	0.20	239.01	982.99	1.61	-2.68	-1.55	0.11	129.7L	-0.04	-25.35	FIRST WFT MWD+IFR SURVEY
14710.00	86.42	175.57	7370.74	-7672.82	-276.18	7677.18	1.32	122.3L	-0.71	-1.12	LAST WFT MWD+IFR SURVEY
14763.00	86.42	175.57	7374.04	-7725.56	-272.09	7729.81	0.00	0.0R	0.00	0.00	PROJECTION TO TD



5D Survey Report**Andarko Petroleum**

Field Name: *Wattenberg*
Site Name: *THOMSEN 6-7HZ Pad*
Well Name: *THOMSEN 13C-18HZ*
Survey: *Definitive Survey*





Surveys for the THOMSEN 13C-18HZ

Site Name THOMSEN 6-7HZ Pad	Units : US ft	North Reference : True	Convergence Angle : 0.51
	Position	Northing : 1299840.67 US ft	Latitude : 40.153754
		Easting : 3220948.57 US ft	Longitude : -104.709538
	Elevation above: 4952.00 US ft		
	Comment :		

Slot Name THOMSEN 13C-18HZ	Position (Offsets relative to Site Centre)		
	+N / -S : -0.00 US ft	Northing : 1299840.67 US ft	Latitude : 40.153754
	+E / -W : -0.00 US ft	Easting : 3220948.57 US ft	Longitude : -104.709538
	Slot TVD Reference : Ground Elevation		
	Elevation above : 4952.00 US ft		
	Comment :		

Well Name THOMSEN 13C-18HZ	Type : Main well	UWI :
	Rig Height <i>Drill Floor</i> : 25.00 US ft	Comment :
	Relative to : 4977.00 US ft	
	Closure Distance : 7730.35 US ft	Closure Azimuth : 182.017°
	Vertical Section (Position of Origin Relative to Slot)	
	+N / -S : 0.00 US ft	+E / -W : 0.00 US ft
		Az : 181.34°

Survey Name :Definitive Survey			
Date : 04/Mar/2013	Survey Tool :	Comment :	Company :
Magnetic Model			
Model Name: BGGM	Date: 03/Mar/2013	Field Strength: 52773.6 nT	Declination: 8.64°
			Dip: 66.78°

5D Survey Report

Survey Tool Ranges			
Name	Start MD (us ft)	End MD (us ft)	Source Survey
NSG Static GMS	0.00	825.00	SURFACE GYRO
MWD + IFR	825.00	14763.00	WFT MWD+IFR

Well path created using minimum curvature

Survey Points (Relative to centre, TVD relative to Drill Floor)											
MD (US ft)	Inc (°)	Az (°)	TVD (US ft)	N.Offset (US ft)	E.Offset (US ft)	Latitude (°)	Longitude (°)	DLS (°/100 US ft)	CL (US ft)	VS (US ft)	Comment
0.00	0.00	0.00	0.00	0.00	0.00	40.153754	-104.709538	0.00	0.00	-0.00	
25.00	0.00	0.00	25.00	0.00	0.00	40.153754	-104.709538	0.00	25.00	-0.00	
125.00	0.60	308.35	125.00	0.32	-0.41	40.153755	-104.709539	0.60	100.00	-0.32	
225.00	0.29	103.16	225.00	0.59	-0.57	40.153756	-104.709540	0.87	100.00	-0.58	
325.00	0.35	3.03	325.00	0.84	-0.31	40.153756	-104.709539	0.49	100.00	-0.83	
425.00	0.42	294.03	424.99	1.29	-0.63	40.153758	-104.709540	0.44	100.00	-1.28	
525.00	0.24	293.45	524.99	1.53	-1.16	40.153758	-104.709542	0.18	100.00	-1.50	
625.00	0.40	327.77	624.99	1.90	-1.54	40.153759	-104.709544	0.24	100.00	-1.87	
725.00	0.32	195.08	724.99	1.93	-1.79	40.153759	-104.709544	0.66	100.00	-1.89	
825.00	0.26	279.07	824.99	1.70	-2.09	40.153759	-104.709545	0.39	100.00	-1.65	TIE ON TO SURFACE GYRO
983.00	0.20	239.01	982.99	1.61	-2.68	40.153758	-104.709548	0.11	158.00	-1.55	FIRST WFT MWD+IFR SURVEY
1044.00	0.63	273.67	1043.99	1.58	-3.11	40.153758	-104.709549	0.79	61.00	-1.50	
1136.00	0.49	280.00	1135.98	1.68	-4.00	40.153759	-104.709552	0.17	92.00	-1.58	
1228.00	0.66	273.41	1227.98	1.78	-4.92	40.153759	-104.709556	0.20	92.00	-1.66	
1320.00	0.70	291.26	1319.97	2.01	-5.97	40.153760	-104.709559	0.23	92.00	-1.87	
1412.00	0.66	311.30	1411.96	2.57	-6.89	40.153761	-104.709563	0.26	92.00	-2.41	
1503.00	0.45	315.00	1502.96	3.17	-7.54	40.153763	-104.709565	0.23	91.00	-2.99	
1685.00	0.56	246.21	1684.95	3.31	-8.86	40.153763	-104.709570	0.32	182.00	-3.10	
1870.00	0.53	259.01	1869.95	2.78	-10.52	40.153762	-104.709576	0.07	185.00	-2.54	
2054.00	0.38	186.50	2053.94	2.02	-11.43	40.153760	-104.709579	0.30	184.00	-1.75	
2239.00	0.21	175.13	2238.94	1.07	-11.47	40.153757	-104.709579	0.10	185.00	-0.80	
2426.00	0.44	293.44	2425.94	1.01	-12.10	40.153757	-104.709581	0.31	187.00	-0.73	
2615.00	0.31	304.57	2614.93	1.59	-13.19	40.153758	-104.709585	0.08	189.00	-1.28	
2805.00	0.60	303.33	2804.93	2.43	-14.44	40.153761	-104.709590	0.15	190.00	-2.09	
2994.00	0.78	261.13	2993.91	2.78	-16.54	40.153762	-104.709597	0.28	189.00	-2.39	
3183.00	0.64	265.72	3182.90	2.50	-18.86	40.153761	-104.709605	0.08	189.00	-2.06	
3372.00	0.91	268.81	3371.88	2.39	-21.41	40.153761	-104.709615	0.14	189.00	-1.89	
3467.00	0.80	247.46	3466.87	2.12	-22.78	40.153760	-104.709620	0.35	95.00	-1.59	
3561.00	2.63	252.92	3560.83	1.23	-25.45	40.153757	-104.709629	1.95	94.00	-0.64	
3656.00	3.88	268.22	3655.67	0.49	-30.75	40.153755	-104.709648	1.59	95.00	0.23	
3751.00	4.90	267.85	3750.39	0.24	-38.01	40.153755	-104.709674	1.07	95.00	0.65	

5D Survey Report

Survey Points (Relative to centre, TVD relative to Drill Floor)											
MD (US ft)	Inc (°)	Az (°)	TVD (US ft)	N.Offset (US ft)	E.Offset (US ft)	Latitude (°)	Longitude (°)	DLS (°/100 US ft)	CL (US ft)	VS (US ft)	Comment
3845.00	6.53	266.73	3843.92	-0.21	-47.36	40.153753	-104.709707	1.74	94.00	1.32	
3940.00	8.76	266.33	3938.07	-0.99	-59.98	40.153751	-104.709753	2.35	95.00	2.39	
4034.00	10.06	254.67	4030.81	-3.61	-75.04	40.153744	-104.709806	2.45	94.00	5.37	
4129.00	10.26	254.20	4124.32	-8.11	-91.18	40.153732	-104.709864	0.23	95.00	10.24	
4223.00	9.66	252.68	4216.91	-12.74	-106.77	40.153719	-104.709920	0.70	94.00	15.23	
4318.00	9.70	254.04	4310.55	-17.31	-122.07	40.153706	-104.709975	0.24	95.00	20.16	
4412.00	8.59	250.04	4403.36	-21.89	-136.28	40.153694	-104.710026	1.36	94.00	25.07	
4507.00	8.03	252.22	4497.36	-26.33	-149.27	40.153682	-104.710072	0.68	95.00	29.82	
4602.00	6.19	253.45	4591.63	-29.82	-160.50	40.153672	-104.710112	1.94	95.00	33.57	
4696.00	4.19	253.11	4685.24	-32.26	-168.64	40.153665	-104.710141	2.13	94.00	36.20	
4791.00	2.52	250.80	4780.07	-33.96	-173.94	40.153661	-104.710160	1.76	95.00	38.02	
4885.00	0.95	279.58	4874.03	-34.51	-176.66	40.153659	-104.710170	1.86	94.00	38.63	
4980.00	1.84	298.21	4969.00	-33.65	-178.78	40.153662	-104.710178	1.04	95.00	37.83	
5075.00	1.12	277.04	5063.97	-32.82	-181.04	40.153664	-104.710186	0.94	95.00	37.04	
5169.00	1.31	107.74	5157.96	-33.04	-180.93	40.153663	-104.710185	2.57	94.00	37.26	
5358.00	0.78	42.96	5346.93	-32.75	-178.00	40.153664	-104.710175	0.64	189.00	36.91	
5548.00	1.08	13.82	5536.91	-30.07	-176.69	40.153671	-104.710170	0.29	190.00	34.19	
5642.00	0.80	351.16	5630.90	-28.56	-176.58	40.153676	-104.710170	0.49	94.00	32.68	
5736.00	1.14	14.12	5724.88	-27.00	-176.45	40.153680	-104.710169	0.54	94.00	31.12	
5831.00	0.20	53.15	5819.87	-25.99	-176.09	40.153683	-104.710168	1.04	95.00	30.10	
5925.00	0.58	31.89	5913.87	-25.48	-175.70	40.153684	-104.710167	0.43	94.00	29.59	
6020.00	1.26	3.53	6008.86	-24.03	-175.39	40.153688	-104.710165	0.84	95.00	28.13	
6115.00	0.50	252.40	6103.85	-23.12	-175.72	40.153691	-104.710167	1.59	95.00	27.22	
6209.00	0.86	258.86	6197.85	-23.38	-176.80	40.153690	-104.710171	0.39	94.00	27.50	
6304.00	0.76	279.08	6292.84	-23.42	-178.12	40.153690	-104.710175	0.32	95.00	27.57	
6398.00	0.70	290.65	6386.83	-23.11	-179.27	40.153691	-104.710179	0.17	94.00	27.30	
6493.00	0.79	308.14	6481.82	-22.51	-180.33	40.153692	-104.710183	0.26	95.00	26.72	
6588.00	0.56	336.30	6576.81	-21.68	-181.03	40.153694	-104.710186	0.42	95.00	25.90	
6651.00	3.26	175.86	6639.78	-23.18	-181.03	40.153690	-104.710186	6.02	63.00	27.41	
6682.00	5.97	171.96	6670.68	-25.66	-180.74	40.153684	-104.710185	8.80	31.00	29.88	
6777.00	13.13	162.44	6764.31	-40.86	-176.79	40.153642	-104.710170	7.69	95.00	44.98	
6871.00	18.91	162.15	6854.62	-65.56	-168.89	40.153574	-104.710142	6.15	94.00	69.49	
6966.00	25.05	170.40	6942.69	-100.08	-160.81	40.153479	-104.710113	7.22	95.00	103.81	
7061.00	33.21	175.63	7025.62	-145.94	-155.46	40.153353	-104.710094	8.99	95.00	149.53	
7155.00	43.22	177.50	7099.39	-203.91	-152.09	40.153194	-104.710082	10.72	94.00	207.41	
7250.00	51.12	179.62	7163.92	-273.50	-150.42	40.153003	-104.710076	8.47	95.00	276.94	
7344.00	57.21	181.09	7218.93	-349.66	-150.93	40.152794	-104.710078	6.60	94.00	353.09	
7439.00	63.07	182.58	7266.21	-431.97	-153.60	40.152568	-104.710088	6.32	95.00	435.44	
7534.00	64.81	182.07	7307.94	-517.23	-157.06	40.152334	-104.710100	1.89	95.00	520.77	
7628.00	76.32	178.38	7339.18	-605.71	-157.30	40.152091	-104.710101	12.79	94.00	609.22	
7660.00	79.74	177.68	7345.81	-636.99	-156.23	40.152005	-104.710097	10.90	32.00	640.47	

5D Survey Report

Survey Points (Relative to centre, TVD relative to Drill Floor)											
MD (US ft)	Inc (°)	Az (°)	TVD (US ft)	N.Offset (US ft)	E.Offset (US ft)	Latitude (°)	Longitude (°)	DLS (°/100 US ft)	CL (US ft)	VS (US ft)	Comment
7691.00	81.52	177.96	7350.86	-667.55	-155.06	40.151921	-104.710093	5.81	31.00	671.00	
7723.00	84.26	178.41	7354.82	-699.29	-154.06	40.151834	-104.710089	8.68	32.00	702.70	
7754.00	88.04	178.87	7356.90	-730.20	-153.32	40.151749	-104.710087	12.28	31.00	733.59	
7778.00	90.98	178.95	7357.11	-754.20	-152.87	40.151684	-104.710085	12.25	24.00	757.56	
7876.00	94.70	177.51	7352.25	-852.01	-149.85	40.151415	-104.710074	4.07	98.00	855.28	
7937.00	92.53	177.33	7348.41	-912.82	-147.11	40.151248	-104.710064	3.57	61.00	916.01	
8029.00	91.23	177.14	7345.39	-1004.66	-142.67	40.150996	-104.710048	1.43	92.00	1007.73	
8121.00	90.37	177.68	7344.10	-1096.56	-138.51	40.150744	-104.710034	1.10	92.00	1099.50	
8212.00	89.94	178.24	7343.86	-1187.50	-135.28	40.150494	-104.710022	0.78	91.00	1190.34	
8303.00	90.06	176.42	7343.86	-1278.40	-131.04	40.150245	-104.710007	2.00	91.00	1281.11	
8395.00	89.82	174.23	7343.95	-1370.09	-123.54	40.149993	-104.709980	2.39	92.00	1372.60	
8486.00	89.75	174.82	7344.30	-1460.67	-114.86	40.149744	-104.709949	0.65	91.00	1462.96	
8578.00	90.06	176.58	7344.45	-1552.41	-107.96	40.149492	-104.709924	1.94	92.00	1554.51	
8670.00	90.37	178.06	7344.10	-1644.30	-103.66	40.149240	-104.709909	1.64	92.00	1646.28	
8762.00	89.26	179.06	7344.40	-1736.27	-101.34	40.148988	-104.709901	1.62	92.00	1738.17	
8854.00	87.73	183.12	7346.82	-1828.20	-103.09	40.148735	-104.709907	4.71	92.00	1830.11	
8945.00	87.40	182.47	7350.68	-1919.01	-107.53	40.148486	-104.709923	0.80	91.00	1921.00	
9035.00	87.80	183.57	7354.45	-2008.81	-112.26	40.148240	-104.709940	1.30	90.00	2010.88	
9127.00	89.94	184.34	7356.27	-2100.56	-118.61	40.147988	-104.709962	2.47	92.00	2102.76	
9219.00	88.77	183.40	7357.30	-2192.34	-124.82	40.147736	-104.709985	1.63	92.00	2194.66	
9312.00	88.06	183.93	7359.87	-2285.12	-130.76	40.147481	-104.710006	0.95	93.00	2287.55	
9405.00	89.94	181.44	7361.50	-2377.99	-135.11	40.147226	-104.710021	3.35	93.00	2380.50	
9497.00	90.53	180.05	7361.12	-2469.98	-136.31	40.146974	-104.710026	1.64	92.00	2472.49	
9588.00	92.03	181.72	7359.09	-2560.94	-137.71	40.146724	-104.710031	2.47	91.00	2563.46	
9681.00	91.85	181.56	7355.94	-2653.85	-140.37	40.146469	-104.710040	0.26	93.00	2656.40	
9774.00	90.80	179.92	7353.79	-2746.81	-141.58	40.146214	-104.710044	2.09	93.00	2749.37	
9868.00	90.80	182.76	7352.48	-2840.77	-143.77	40.145956	-104.710052	3.02	94.00	2843.35	
9963.00	87.68	182.88	7353.74	-2935.63	-148.45	40.145695	-104.710069	3.29	95.00	2938.30	
10057.00	88.77	182.69	7356.65	-3029.47	-153.01	40.145438	-104.710085	1.18	94.00	3032.22	
10152.00	90.43	185.20	7357.31	-3124.24	-159.55	40.145178	-104.710109	3.17	95.00	3127.11	
10247.00	90.79	185.34	7356.30	-3218.83	-168.27	40.144918	-104.710140	0.41	95.00	3221.88	
10341.00	90.12	182.69	7355.55	-3312.59	-174.85	40.144660	-104.710163	2.91	94.00	3315.77	
10436.00	90.06	183.87	7355.40	-3407.43	-180.29	40.144400	-104.710183	1.24	95.00	3410.71	
10530.00	89.38	183.75	7355.86	-3501.22	-186.53	40.144143	-104.710205	0.73	94.00	3504.62	
10625.00	90.12	183.43	7356.28	-3596.03	-192.48	40.143882	-104.710227	0.85	95.00	3599.55	
10720.00	89.91	184.81	7356.25	-3690.78	-199.31	40.143622	-104.710251	1.47	95.00	3694.43	
10814.00	89.94	182.35	7356.38	-3784.59	-205.18	40.143365	-104.710272	2.62	94.00	3788.36	
10909.00	89.14	181.95	7357.14	-3879.52	-208.74	40.143104	-104.710285	0.94	95.00	3883.34	
11003.00	89.20	180.99	7358.50	-3973.48	-211.15	40.142846	-104.710293	1.02	94.00	3977.33	
11098.00	90.99	180.45	7358.34	-4068.47	-212.34	40.142585	-104.710298	1.97	95.00	4072.32	
11193.00	91.91	180.45	7355.94	-4163.43	-213.09	40.142325	-104.710300	0.97	95.00	4167.28	

5D Survey Report

Survey Points (Relative to centre, TVD relative to Drill Floor)											
MD (US ft)	Inc (°)	Az (°)	TVD (US ft)	N.Offset (US ft)	E.Offset (US ft)	Latitude (°)	Longitude (°)	DLS (°/100 US ft)	CL (US ft)	VS (US ft)	Comment
11287.00	91.11	180.93	7353.46	-4257.39	-214.22	40.142067	-104.710304	0.99	94.00	4261.24	
11382.00	90.19	182.49	7352.38	-4352.34	-217.06	40.141806	-104.710314	1.91	95.00	4356.23	
11476.00	89.14	176.63	7352.93	-4446.29	-216.34	40.141548	-104.710312	6.33	94.00	4450.14	
11571.00	89.75	178.36	7353.85	-4541.19	-212.18	40.141288	-104.710297	1.93	95.00	4544.91	
11666.00	89.57	178.55	7354.42	-4636.16	-209.62	40.141027	-104.710288	0.28	95.00	4639.79	
11760.00	89.38	178.36	7355.28	-4730.12	-207.09	40.140769	-104.710279	0.29	94.00	4733.67	
11855.00	90.99	181.09	7354.97	-4825.11	-206.63	40.140508	-104.710277	3.34	95.00	4828.62	
11949.00	89.01	178.80	7354.97	-4919.10	-206.54	40.140250	-104.710277	3.22	94.00	4922.58	
12044.00	90.06	180.51	7355.74	-5014.09	-205.97	40.139990	-104.710275	2.11	95.00	5017.53	
12139.00	89.07	184.85	7356.47	-5108.95	-210.41	40.139729	-104.710291	4.69	95.00	5112.48	
12233.00	88.21	186.61	7358.70	-5202.45	-219.79	40.139473	-104.710324	2.08	94.00	5206.17	
12328.00	87.90	186.15	7361.92	-5296.81	-230.34	40.139213	-104.710362	0.58	95.00	5300.75	
12422.00	87.16	185.36	7365.97	-5390.25	-239.76	40.138957	-104.710396	1.15	94.00	5394.38	
12517.00	89.91	186.75	7368.40	-5484.68	-249.78	40.138698	-104.710431	3.24	95.00	5489.02	
12611.00	90.62	188.92	7367.97	-5577.79	-262.59	40.138442	-104.710477	2.43	94.00	5582.41	
12706.00	91.61	187.02	7366.12	-5671.85	-275.76	40.138184	-104.710524	2.25	95.00	5676.75	
12801.00	91.05	185.04	7363.91	-5766.29	-285.74	40.137925	-104.710560	2.17	95.00	5771.40	
12895.00	91.11	185.70	7362.14	-5859.87	-294.53	40.137668	-104.710591	0.70	94.00	5865.15	
12990.00	90.86	183.29	7360.51	-5954.55	-301.97	40.137408	-104.710618	2.55	95.00	5959.99	
13085.00	90.86	182.77	7359.08	-6049.41	-307.00	40.137148	-104.710636	0.55	95.00	6054.93	
13179.00	90.06	180.42	7358.33	-6143.36	-309.61	40.136890	-104.710645	2.64	94.00	6148.92	
13274.00	89.03	177.40	7359.08	-6238.33	-307.81	40.136629	-104.710639	3.36	95.00	6243.82	
13368.00	89.20	179.98	7360.53	-6332.29	-305.66	40.136371	-104.710631	2.75	94.00	6337.70	
13463.00	87.84	179.57	7362.99	-6427.25	-305.28	40.136110	-104.710630	1.50	95.00	6432.63	
13558.00	87.90	180.13	7366.52	-6522.18	-305.04	40.135850	-104.710629	0.59	95.00	6527.53	
13652.00	90.43	180.11	7367.89	-6616.17	-305.23	40.135592	-104.710630	2.69	94.00	6621.49	
13747.00	91.11	180.62	7366.61	-6711.15	-305.84	40.135331	-104.710632	0.89	95.00	6716.47	
13841.00	91.48	180.87	7364.49	-6805.12	-307.06	40.135073	-104.710636	0.48	94.00	6810.44	
13936.00	91.60	180.84	7361.93	-6900.08	-308.48	40.134812	-104.710641	0.13	95.00	6905.40	
14030.00	91.67	180.10	7359.25	-6994.04	-309.25	40.134554	-104.710644	0.79	94.00	6999.35	
14125.00	90.26	177.93	7357.65	-7089.00	-307.61	40.134294	-104.710638	2.72	95.00	7094.25	
14220.00	89.75	177.49	7357.64	-7183.92	-303.82	40.134033	-104.710625	0.71	95.00	7189.06	
14314.00	89.88	177.61	7357.95	-7277.84	-299.80	40.133775	-104.710610	0.19	94.00	7282.86	
14409.00	89.38	177.54	7358.56	-7372.75	-295.78	40.133515	-104.710596	0.53	95.00	7377.65	
14503.00	88.02	176.26	7360.69	-7466.58	-290.70	40.133257	-104.710578	1.99	94.00	7471.34	
14598.00	87.29	175.99	7364.58	-7561.29	-284.28	40.132997	-104.710555	0.82	95.00	7565.87	
14693.00	86.54	175.76	7369.69	-7655.90	-277.46	40.132737	-104.710530	0.83	95.00	7660.30	
14710.00	86.42	175.57	7370.74	-7672.82	-276.18	40.132691	-104.710526	1.32	17.00	7677.18	LAST WFT MWD+IFR SURVEY
14763.00	86.42	175.57	7374.04	-7725.56	-272.09	40.132546	-104.710511	0.00	53.00	7729.81	PROJECTION TO TD

