

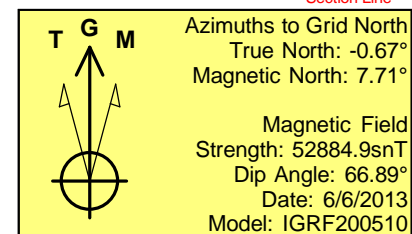
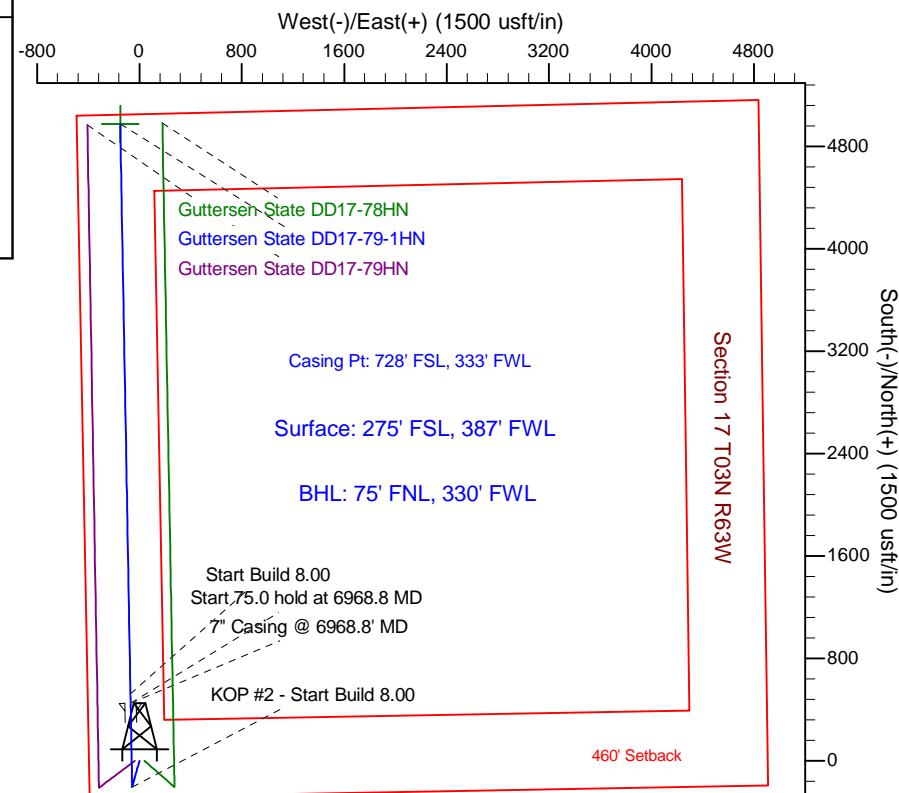
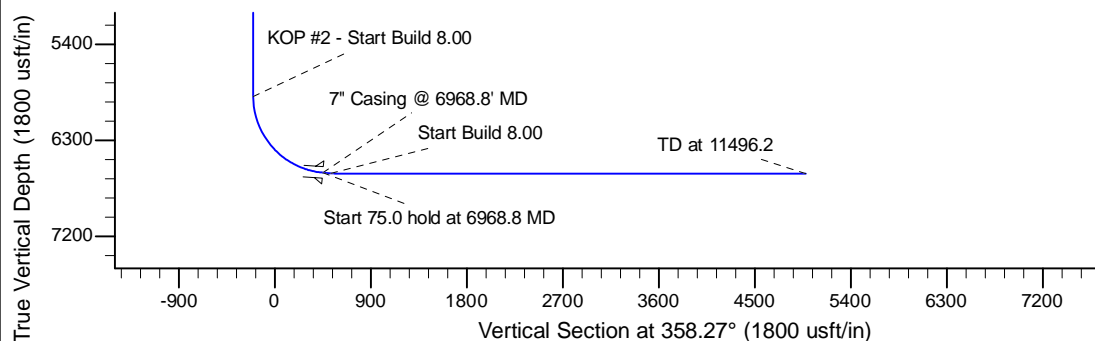
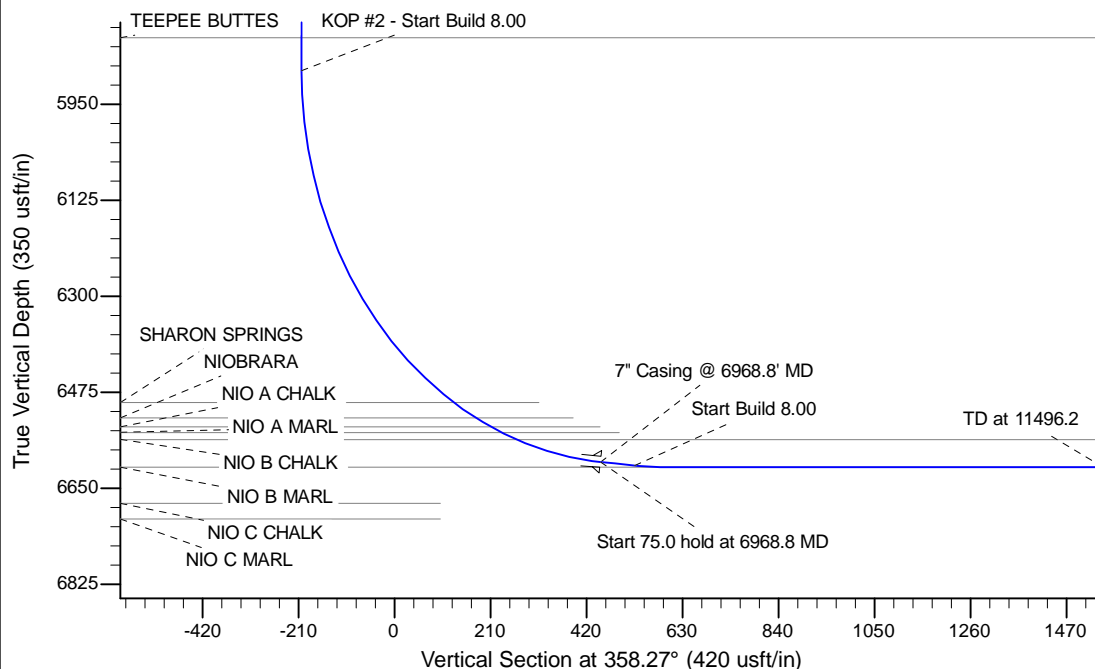
Project: Wattenberg Field  
 Site: DD (Sec.17-T03N-R63W) Weld County, CO  
 Well: Gutteresen State DD17-79-1HN  
 Wellbore: Original Drilling  
 Design: APD - Rev 0

# Northern Region Drilling

Geodetic System: US State Plane 1983  
 Datum: North American Datum 1983  
 Ellipsoid: GRS 1980  
 Zone: Colorado Northern Zone  
 System Datum: Mean Sea Level

## SECTION DETAILS

Sec	MD	Inc	Azi	TVD	+N/-S	+E/-W	Dleg	TFace	VSect	Target
1	0.0	0.00	0.00	0.0	0.0	0.0	0.00	0.00	0.0	
2	1800.0	0.00	0.00	1800.0	0.0	0.0	0.00	0.00	0.0	
3	2404.7	12.09	195.54	2400.2	-61.3	-17.0	2.00	195.54	-60.7	
4	2813.4	12.09	195.54	2799.8	-143.7	-40.0	0.00	0.00	-142.5	
5	3418.0	0.00	0.00	3400.0	-205.0	-57.0	2.00	180.00	-203.2	
6	5906.3	0.00	0.00	5888.3	-205.0	-57.0	0.00	0.00	-203.2	
7	6968.8	85.00	358.97	6601.7	448.7	-68.7	8.00	358.97	450.5	
8	7043.8	85.00	358.97	6608.3	523.4	-70.1	0.00	0.00	525.2	
9	7106.3	90.00	358.97	6611.0	585.8	-71.2	8.00	0.00	587.7	
10	11496.2	90.00	358.97	6611.0	4974.9	-150.0	0.00	0.00	4977.2	Gutteresen State DD17-79-1HN BHL 75'FNL, 330'FWL



## WELL DETAILS: Gutteresen State DD17-79-1HN

	Ground Level: 4820.0		
0.0	0.0	1324248.03	3287717.78
		40.218870	-104.469670

Plan: APD - Rev 0 (Gutteresen State DD17-79-1HN/Original Drilling)

Created By: Shailey Jewell Date: 11:38, June 06 2013

Checked: \_\_\_\_\_ Date: \_\_\_\_\_

Reviewed: \_\_\_\_\_ Date: \_\_\_\_\_

Approved: \_\_\_\_\_ Date: \_\_\_\_\_