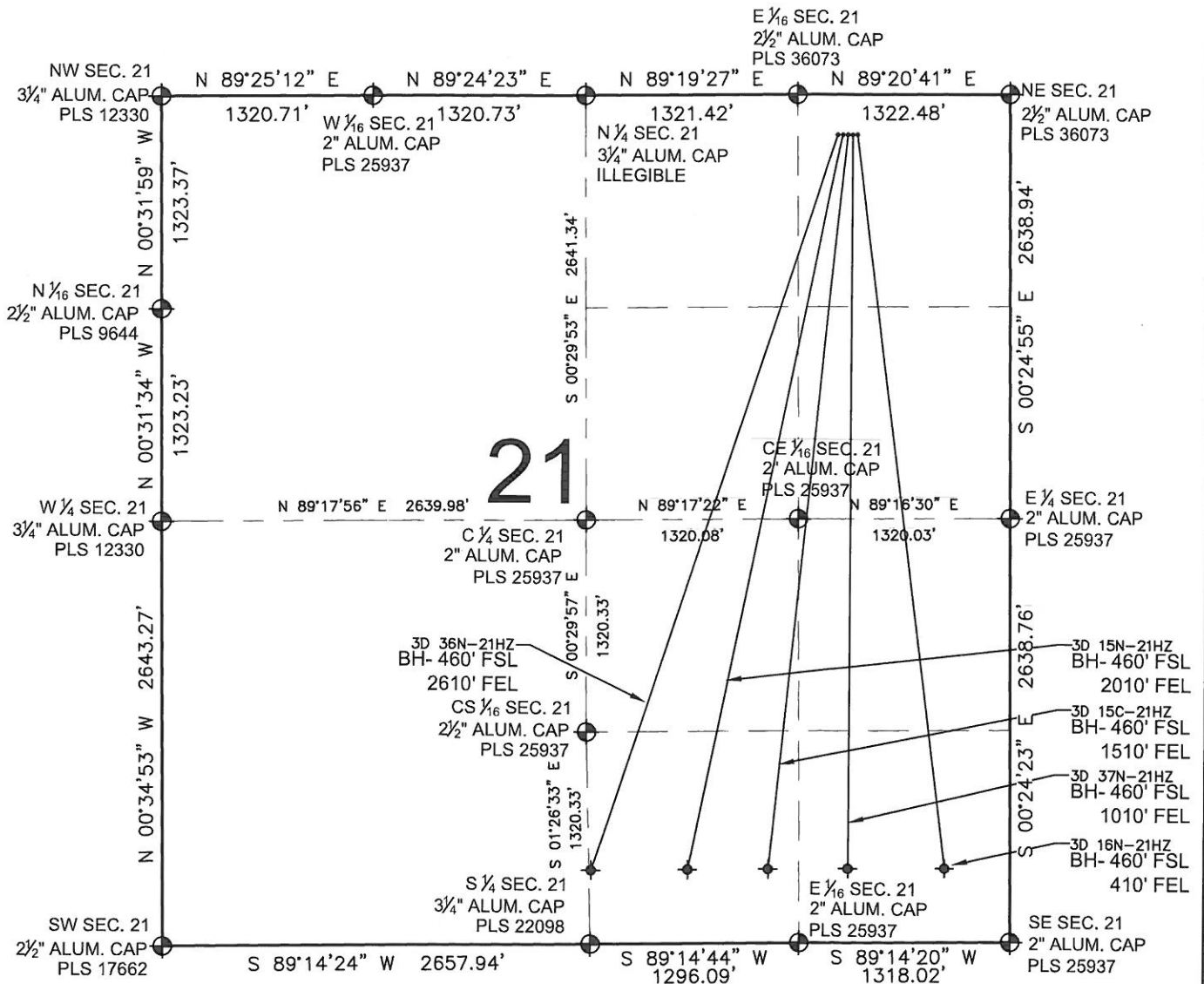


3D 36N-21HZ MULTI-WELL PLAN

SECTION 21, TOWNSHIP 2 NORTH, RANGE 66 WEST, 6TH P.M.



NOTES:

3D 36N-21HZ TO BE AT 250' FNL, 1069' FEL.
 BOTTOM HOLE AT 460' FSL & 2610' FEL.
 3D 15N-21HZ TO BE AT 250' FNL, 1039' FEL.
 BOTTOM HOLE AT 460' FSL & 2010' FEL.
 3D 15C-21HZ TO BE AT 250' FNL, 1009' FEL.
 BOTTOM HOLE AT 460' FSL & 1510' FEL.
 3D 37N-21HZ TO BE AT 250' FNL, 979' FEL.
 BOTTOM HOLE AT 460' FSL & 1010' FEL.
 3D 16N-21HZ TO BE AT 250' FNL, 949' FEL.
 BOTTOM HOLE AT 460' FSL & 410' FEL.

LEGEND

⊕ = EXISTING MONUMENT ♦ = BOTTOM HOLE
 ● = PROPOSED WELL ◆ = EXISTING WELL
 BH = BOTTOM HOLE

PREPARED BY:

PFS

Petroleum Field Services, LLC
 1801 W. 13th Ave.
 Denver, CO 80204

KERR-MCGEE OIL & GAS ONSHORE LP

FIELD DATE:
05-30-13

DRAWING DATE:
07-10-13

SURFACE LOCATION:

NE 1/4, NE 1/4, SEC. 21, T2N, R66W, 6TH P.M.
 WELD COUNTY, COLORADO

