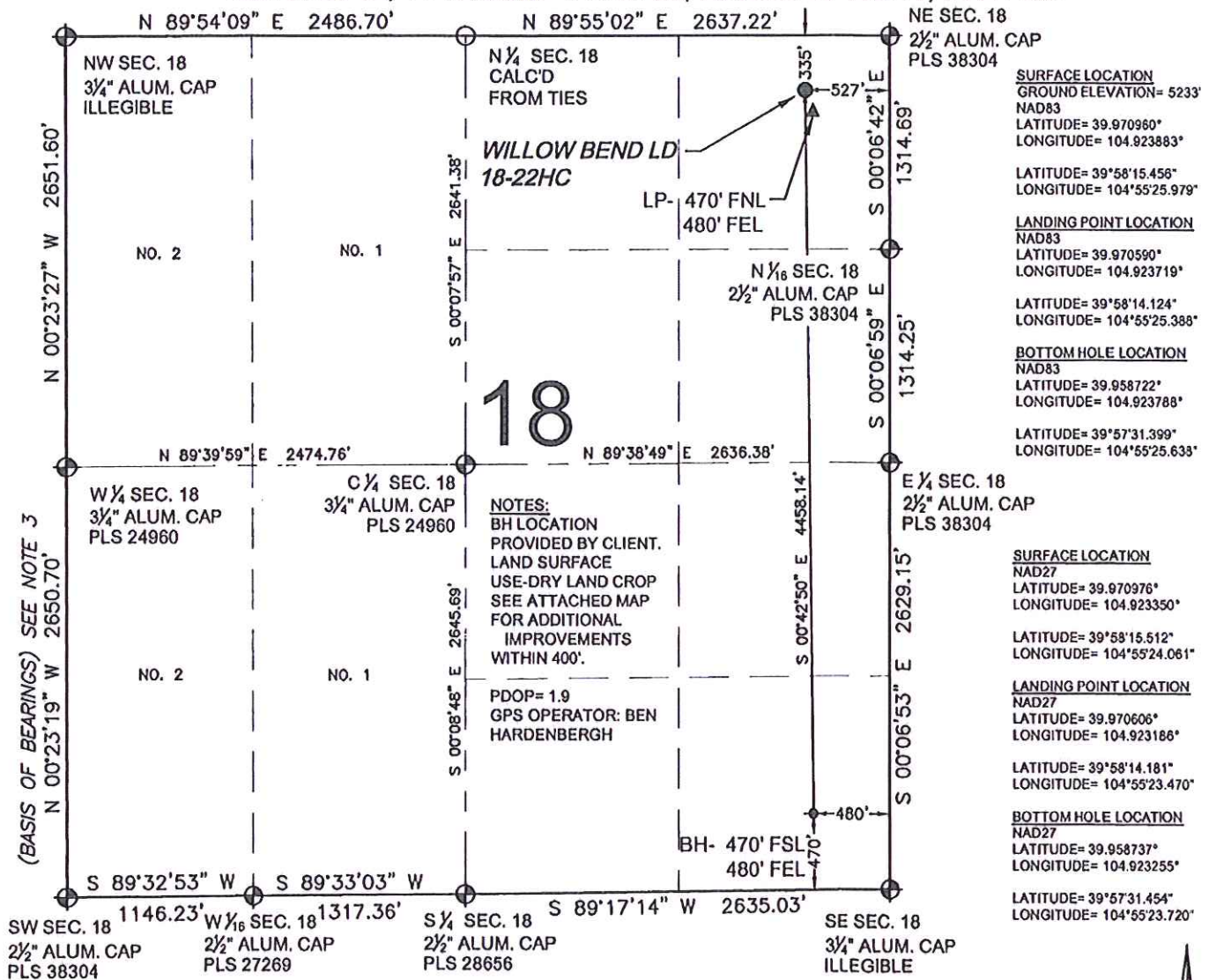


# WELL LOCATION CERTIFICATE: WILLOW BEND LD 18-22HC

SECTION 18, TOWNSHIP 1 SOUTH, RANGE 67 WEST, 6TH P.M.



**SURFACE LOCATION**  
GROUND ELEVATION= 5233'  
NAD83  
LATITUDE= 39.970960°  
LONGITUDE= 104.923883°

LATITUDE= 39°58'15.458"  
LONGITUDE= 104°55'25.979"

**LANDING POINT LOCATION**  
NAD83  
LATITUDE= 39.970590°  
LONGITUDE= 104.923719°

LATITUDE= 39°58'14.124"  
LONGITUDE= 104°55'25.388°

**BOTTOM HOLE LOCATION**  
NAD83  
LATITUDE= 39.958722°  
LONGITUDE= 104.923788°

LATITUDE= 39°57'31.399"  
LONGITUDE= 104°55'25.633°

**SURFACE LOCATION**  
NAD27  
LATITUDE= 39.970976°  
LONGITUDE= 104.923350°

LATITUDE= 39°58'15.512"  
LONGITUDE= 104°55'24.061°

**LANDING POINT LOCATION**  
NAD27  
LATITUDE= 39.970606°  
LONGITUDE= 104.923186°

LATITUDE= 39°58'14.181"  
LONGITUDE= 104°55'23.470°

**BOTTOM HOLE LOCATION**  
NAD27  
LATITUDE= 39.958737°  
LONGITUDE= 104.923255°

LATITUDE= 39°57'31.454"  
LONGITUDE= 104°55'23.720°

## LEGEND

- ⊕ = EXISTING MONUMENT
- = MONUMENT NOT FOUND
- = PROPOSED WELL
- ◆ = EXISTING WELL
- ▲ = LANDING POINT
- LP = LANDING POINT
- ⬇ = BOTTOM HOLE
- BH = BOTTOM HOLE

## NOTES:

- THIS FIELD SURVEY CONFORMS TO THE MINIMUM STANDARDS SET BY THE C.O.G.C.C., RULE NO. 215
- HORIZONTAL POSITIONS AND ORTHOMETRIC ELEVATIONS SHOWN AT THE WELL HEAD, ARE BASED ON GPS-RTK POSITIONS DERIVED FROM MINIMUM 2-HOUR STATIC OBSERVATIONS CORRECTED BY THE NATIONAL GEODETIC SURVEY ONLINE POSITIONING USER SERVICE, O.P.U.S. DATUM: HORIZONTAL = NAD83/2011, VERTICAL = NAVD88
- THE BASIS OF BEARINGS ARE STATE PLANE COORDINATE SYSTEM GRID BEARINGS SHOWN HEREON BETWEEN THE DESCRIBED MONUMENTS SHOWN HEREON.
- GRID DISTANCES ARE SHOWN, AS MEASURED IN THE FIELD, WITH TIES TO WELLS MEASURED PERPENDICULAR TO SECTION LINES.

I, MICHAEL L. POOL, A LICENSED PROFESSIONAL LAND SURVEYOR IN THE STATE OF COLORADO DO HEREBY CERTIFY TO GREAT WESTERN OIL & GAS COMPANY, THAT THE SURVEY AND WELL LOCATION CERTIFICATE SHOWN HEREON WERE DONE BY ME OR UNDER MY DIRECT SUPERVISION AND THAT THE DRAWING SHOWN HEREON ACCURATELY DEPICTS THE PROPOSED LOCATION OF THE WELL. THIS CERTIFICATE DOES NOT REPRESENT A LAND SURVEY PLAT OR IMPROVEMENT SURVEY PLAT AS DEFINED BY C.R.S. 38-51-102 AND CANNOT BE RELIED UPON TO DETERMINE OWNERSHIP.

MICHAEL L. POOL, PLS 38304  
COLORADO LICENSED PROFESSIONAL LAND SURVEYOR  
FOR AND ON BEHALF OF P.F.S., LLC

NOTICE: ACCORDING TO COLORADO LAW YOU MUST COMMENCE ANY LEGAL ACTION BASED UPON ANY DEFECT IN THIS SURVEY WITHIN THREE YEARS AFTER YOU FIRST DISCOVER SUCH DEFECT. IN NO EVENT MAY ANY ACTION BASED UPON ANY DEFECT IN THIS SURVEY BE COMMENCED MORE THAN TEN YEARS FROM THIS SAID DATE OF THIS CERTIFICATION SHOWN HEREON.

PREPARED BY:



FIELD DATE:

05-01-13

DRAWING DATE:

05-30-13

BY:

KAD

CHECKED:

TJN

SURFACE LOCATION:

NE 1/4 NE 1/4,

SEC. 18, T1S, R67W, 6TH P.M.

ADAMS COUNTY, COLORADO

