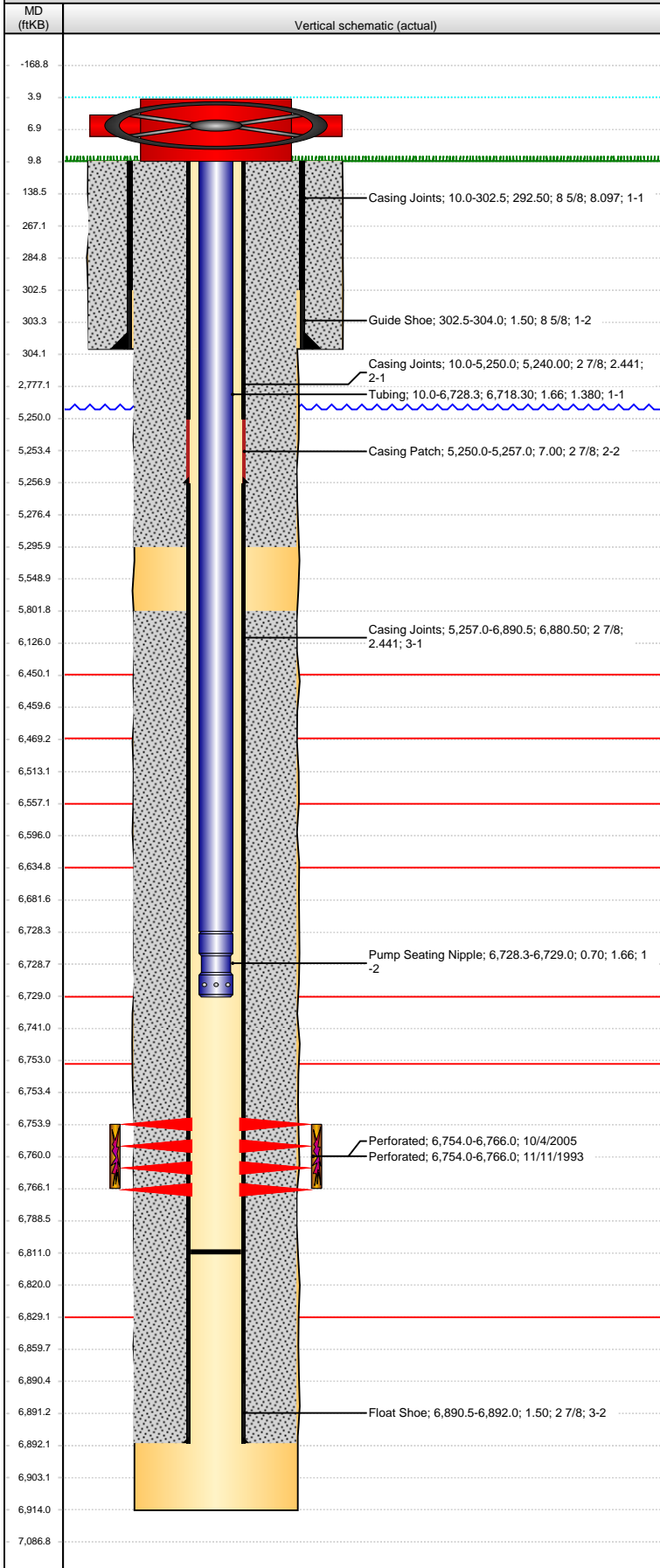


Well Name: MEYER B 02-09

VERTICAL - ORIGINAL HOLE, 7/31/2013 7:43:26 AM



## Well Header

API	Business Unit	District	Well Config
05-123-17388	WATTENBERG	15	VERTICAL
Original KB Elevation (ft)	KB - GL / MSL (ftKB)	Spud Date	P & A Date
4,612.00	10.00	11/3/1993	

## Comment

CSG REPAIR 2/05 PATCH @ 5194'

## Directions To Well

WCR 59 & 60 1/2, SOUTH .2, WEST .1 ON NORTH SIDE OF TANK BATTERY/POND, NORTH .1 INTO.

## Congressional Location

Quarter 1	Quarter 2	Quarter 3	Quarter 4	Section	Township	Twnshp N...	Range	Rng E/W Dir
		NE	SE	2	5	N	64	W

## Bottom Hole Location

North-South Distance (ft)	From N or S Line	East-West Distance (ft)	From E or W Line

## Plug Back Total Depths

Date	Depth (ftKB)	Method	Com
11/8/1993	6,888.0	CASING TALLY	FLOAT SHOE W/ BAFFLE
11/11/1993	6,856.0	CASED HOLE LOG	DEPTH LOGGER ON CBL
8/26/2005	6,811.0	TAG	NO TAG W/ 214 JTS

## Wellbore Sections

Section Des	Size (in)	Act Top (ftKB)	Act Btm (ftKB)
SURFACE	12 1/4	10.0	304.0
PRODUCTION	7 7/8	304.0	6,914.0

## Zone Statuses

Zone Name	Status Date	Status	Job
CODELL	12/9/1993	PR	DRILLING/COMPLETION - ORIGINAL, 11/3/1993 00:00
CODELL	3/5/2005	PR	CASING REPAIR, 1/12/1999 00:00
CODELL	10/29/2005	PR	RE-FRAC, 10/3/2005 00:00

## Casing Strings

### Surface, 304.0ftKB

Casing Description	Run Date	OD (in)	Wt/Len (l...)	Grade	Top (ftKB)	MD (ftKB)
Surface	11/3/1993	8 5/8	24.00	?	10.0	304.0

### Production, 5,257.0ftKB

Casing Description	Run Date	OD (in)	Wt/Len (l...)	Grade	Top (ftKB)	MD (ftKB)
Production	2/22/2005	2 7/8	6.50	N-80	10.0	5,257.0

### Production, 6,892.0ftKB

Casing Description	Run Date	OD (in)	Wt/Len (l...)	Grade	Top (ftKB)	MD (ftKB)
Production	11/8/1993	2 7/8	6.50	N-80	10.0	6,892.0

## Cement

Description	Top Depth (ftKB)	Bottom Depth (ftKB)
SURFACE CASING CEMENT	10.0	304.0
PRODUCTION CASING CEMENT	5,802.0	6,892.0
Casing Repair Cement	10.0	5,296.0

## Tubing Components

Item Des	OD (in)	Wt (lb/ft)	Grade	Jts	Len (ft)	Btm (ftKB)	Btm (TVD) (ftKB)
Tubing	1.66	2.33	J-55	204	6,718.30	6,728.3	
Pump Seating Nipple	1.66			1	0.70	6,729.0	

## Perforation Data

Zone	Bnch/St g	Entered Shot Total	Top (ftKB)	Btm (ftKB)	Date
CODELL, ORIGINAL HOLE		46	6,754.00	6,766.00	11/11/1993
CODELL, ORIGINAL HOLE		48	6,754.00	6,766.00	10/4/2005

## Stimulations & Treatments

Date	Zone	Primary Job Type
11/26/1993	CODELL, ORIGINAL HOLE	DRILLING/COMPLETION - ORIGINAL
Technical Result	Tech Result Details	Tech Result Note

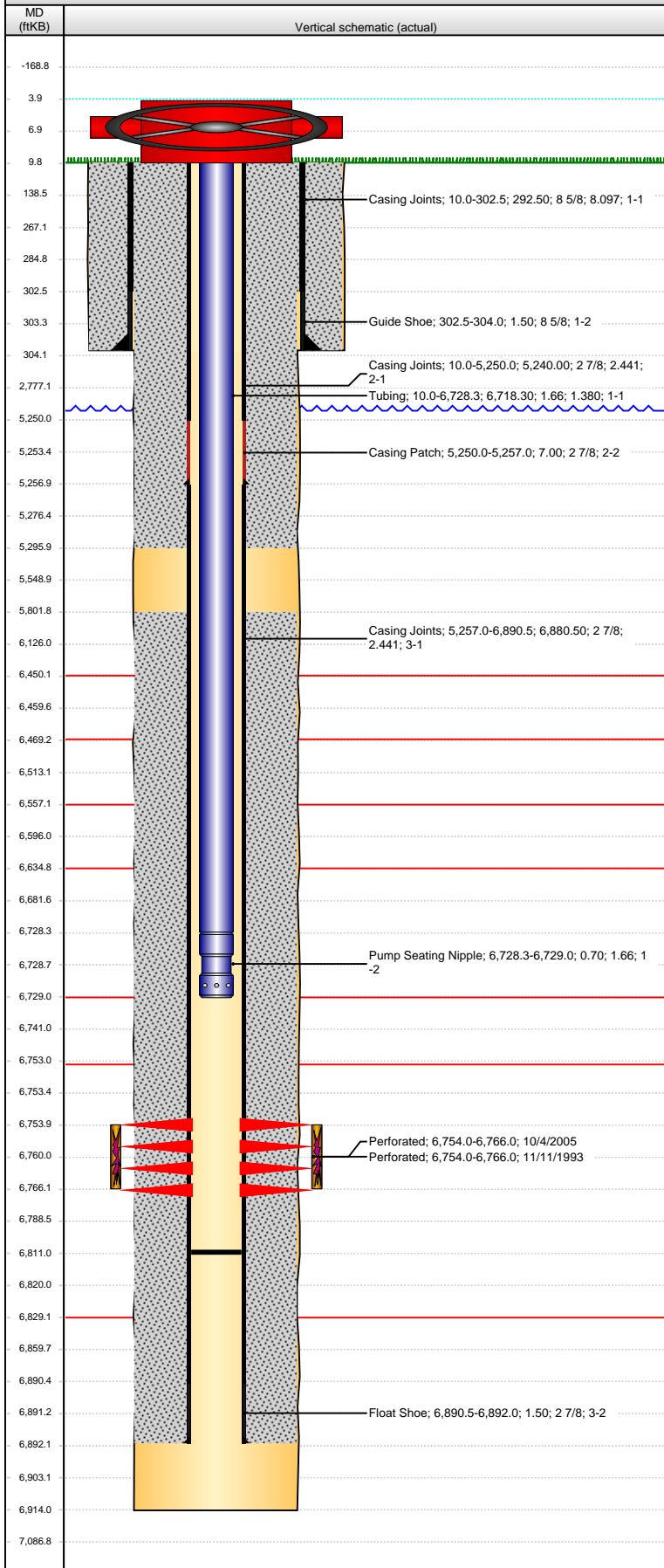
## Comment

Date	Zone	Primary Job Type
10/20/2005	CODELL, ORIGINAL HOLE	RE-FRAC
Technical Result	Tech Result Details	Tech Result Note

## Comment

**Well Name: MEYER B 02-09**

VERTICAL - ORIGINAL HOLE, 7/31/2013 7:43:28 AM



## Other In Hole

Run Date	Des	OD (in)	Top (ftKB)	Btm (ftKB)
<b>Logs</b>				
Date	Type	Top (ftKB)	Btm (ftKB)	
11/8/1993	COMPENSATED DENSITY	6,000.0	6,930.0	
11/11/1993	CEMENT BOND	5,700.0	6,849.0	
2/28/2005	CBL/CCL/GR	5,000.0	5,400.0	
8/26/2011	GYRO	10.0	6,800.0	