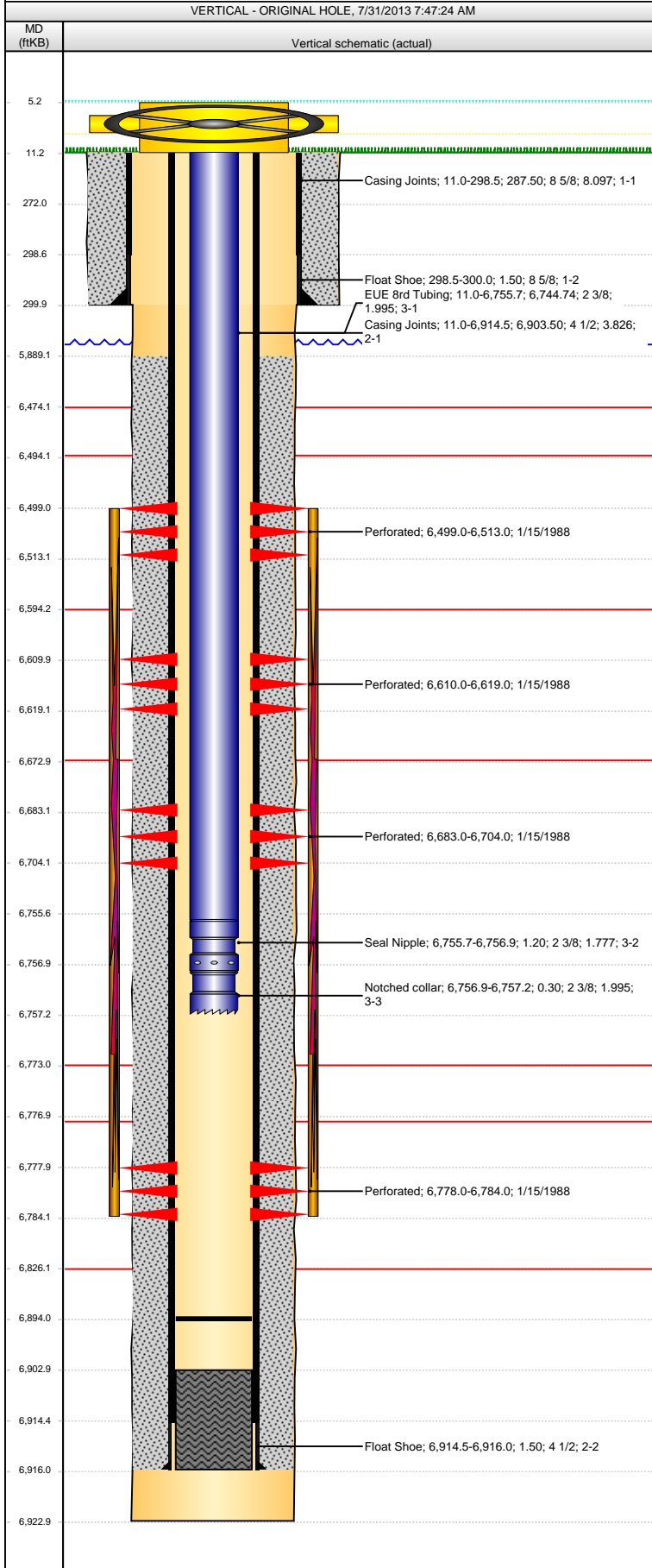


Well Name: FOE B 02-07



Well Header									
API 05-123-13772		Business Unit WATTENBERG		District 15		Well Config VERTICAL			
Original KB Elevation (ft) 4,615.00		KB - GL / MSL (ftKB) 11.00		Spud Date 1/8/1988		P & A Date			
Comment									
Directions To Well WCR 59 & WCR 60 1/2, W 0.2, N 0.1, NW 0.2 INTO LOCATION.									
Congressional Location									
Quarter 1	Quarter 2	Quarter 3 SW	Quarter 4 NE	Section 2	Township 5 N	Twnshp N...	Range 64	Rng E/W Dir W	
Bottom Hole Location									
North-South Distance (ft)		From N or S Line		East-West Distance (ft)			From E or W Line		
Plug Back Total Depths									
Date	Depth (ftKB)	Method			Com				
1/13/1988	6,903.0	TAG			TAG FILL W/ TUBING, 112' OF RATHOLE SLICK LINE				
11/26/2008	6,896.0	TUBING TALLY							
11/15/2011	6,894.0	TAG							
Wellbore Sections									
Section Des			Size (in)		Act Top (ftKB)		Act Btm (ftKB)		
SURFACE			12 1/4		11.0		300.0		
PRODUCTION			7 7/8		300.0		6,923.0		
Zone Statuses									
Zone Name	Status Date	Status		Job					
NIORARA-CODELL	2/4/1988	PR		DRILLING/COMPLETION - ORIGINAL, 1/8/1988 00:00					
CODELL	2/4/1988	PR		DRILLING/COMPLETION - ORIGINAL, 1/8/1988 00:00					
NIORARA	2/4/1988	PR		DRILLING/COMPLETION - ORIGINAL, 1/8/1988 00:00					
Casing Strings									
Surface, 300.0ftKB									
Casing Description Surface		Run Date 1/8/1988	OD (in) 8 5/8	Wt/Len (l...) 24.00	Grade	Top (ftKB) 11.0	MD (ftKB) 300.0		
Production, 6,916.0ftKB									
Casing Description Production		Run Date 1/13/1988	OD (in) 4 1/2	Wt/Len (l...) 15.10	Grade	Top (ftKB) 11.0	MD (ftKB) 6,916.0		
Cement									
Description SURFACE CASING CEMENT					Top Depth (ftKB) 11.0		Bottom Depth (ftKB) 300.0		
Description PRODUCTION CASING CEMENT					Top Depth (ftKB) 5,889.0		Bottom Depth (ftKB) 6,916.0		
Tubing Components									
Item Des	OD (in)	Wt (lb/ft)	Grade	Jts	Len (ft)	Btm (ftKB)	Btm (TVD) (ftKB)		
EUE 8rd Tubing	2 3/8	4.70	J-55	218	6,744.74	6,755.7			
Seal Nipple	2 3/8	4.70	N-80	1	1.20	6,756.9			
Notched collar	2 3/8	4.70	J-55	1	0.30	6,757.2			
Perforation Data									
Zone	Bnch/St g	Entered Shot Total	Top (ftKB)		Btm (ftKB)		Date		
NIORARA, ORIGINAL HOLE	A	2	6,499.00		6,513.00		1/15/1988		
NIORARA, ORIGINAL HOLE	B	6	6,610.00		6,619.00		1/15/1988		
NIORARA, ORIGINAL HOLE	C	3	6,683.00		6,704.00		1/15/1988		
CODELL, ORIGINAL HOLE		4	6,778.00		6,784.00		1/15/1988		
Stimulations & Treatments									
Date 1/21/1988	Zone NIORARA-CODELL, ORIGINAL HOLE			Primary Job Type DRILLING/COMPLETION - ORIGINAL					
Technical Result		Tech Result Details				Tech Result Note			
Comment									
Other In Hole									
Run Date	Des				OD (in)	Top (ftKB)	Btm (ftKB)		
Logs									
Date	Type				Top (ftKB)		Btm (ftKB)		
1/15/1988	CBL/CCL/GR				5,680.0		6,861.0		
2/4/2013	GYRO				11.0		6,750.0		