

Digital Bond Log
Gamma-Ray
CCL

Company KERR-McGEE OIL & GAS ONSHORE LP
Well DRY CREEK 22-27
Field WATTENBERG
County WELD
State COLORADO

Company KERR-McGEE OIL & GAS ONSHORE LP
Well DRY CREEK 22-27
Field WATTENBERG
County WELD State COLORADO

Location: NW NW
API # : 05-123-31569
Other Services

SEC 27 TWP 1N RGE 67W
Permanent Datum GL
Log Measured From KB 15 Elevation 5008
Drilling Measured From KB
K.B. 5023
D.F. 5022
G.L. 5008

Date 6-18-2013

Run Number ONE
Depth Driller 8500
Depth Logger 4500
Bottom Logged Interval 4500
Top Log Interval SURFACE
Open Hole Size 7 7/8"
Type Fluid KCL WATER
Density / Viscosity 1.0
Max. Recorded Temp. 151
Estimated Cement Top 740
Time Well Ready
Time Logger on Bottom
Equipment Number 5432
Location GREELEY
Recorded By J.J.BULLARD
Witnessed By J.CHANDLER

Borehole Record				Tubing Record			
Run Number	Bit	From	To	Size	Weight	From	To
ONE	12 1/4"	0	1172				
TWO	7 7/8"	1172	8500				

Casing Record	Size	Wgt/Ft	Top	Bottom
Surface String	8 5/8"	24#	0	1171
Prot. String				
Production String	4 1/2"	11.6#	0	T.D.
Liner				

<<< Fold Here >>>

All interpretations are opinions based on inferences from electrical or other measurements and we cannot and do not guarantee the accuracy or correctness of any interpretation, and we shall not, except in the case of gross or willful negligence on our part, be liable or responsible for any loss, costs, damages, or expenses incurred or sustained by anyone resulting from any interpretation made by any of our officers, agents or employees. These interpretations are also subject to our general terms and conditions set out in our current Price Schedule.

Comments

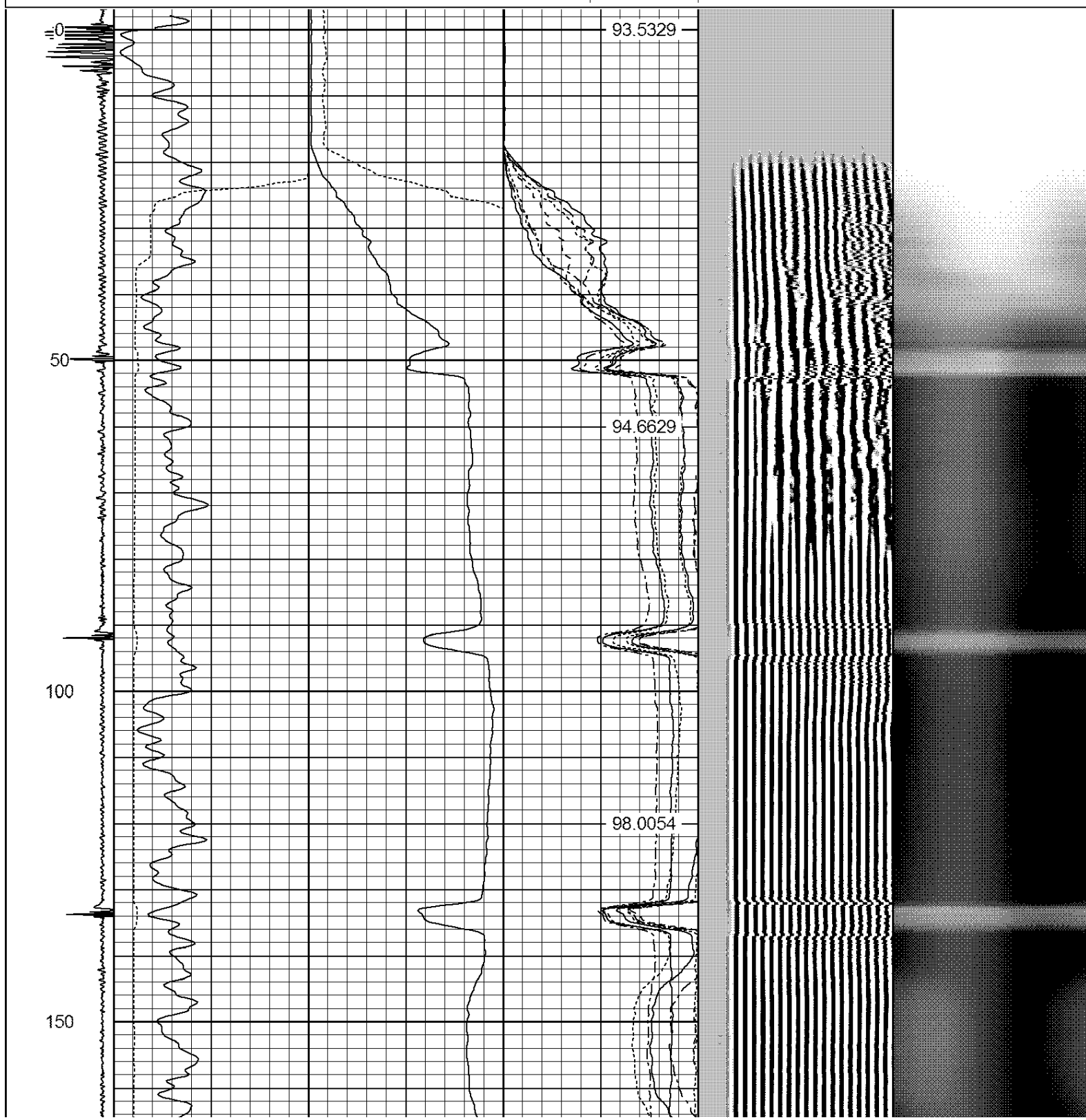
Ran C.B.L. to Verify Cement

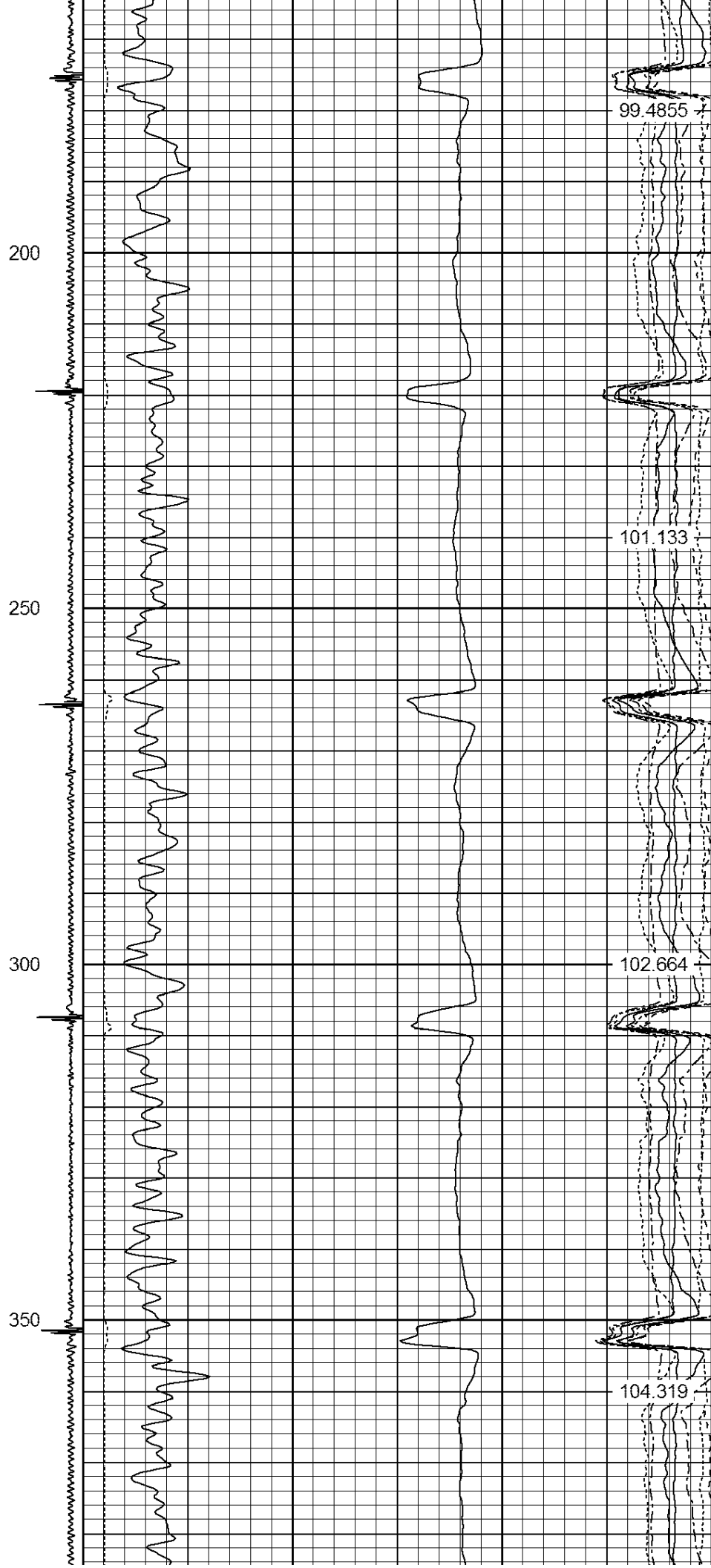
THANK YOU FOR USING W.E.S..!!!!!!!

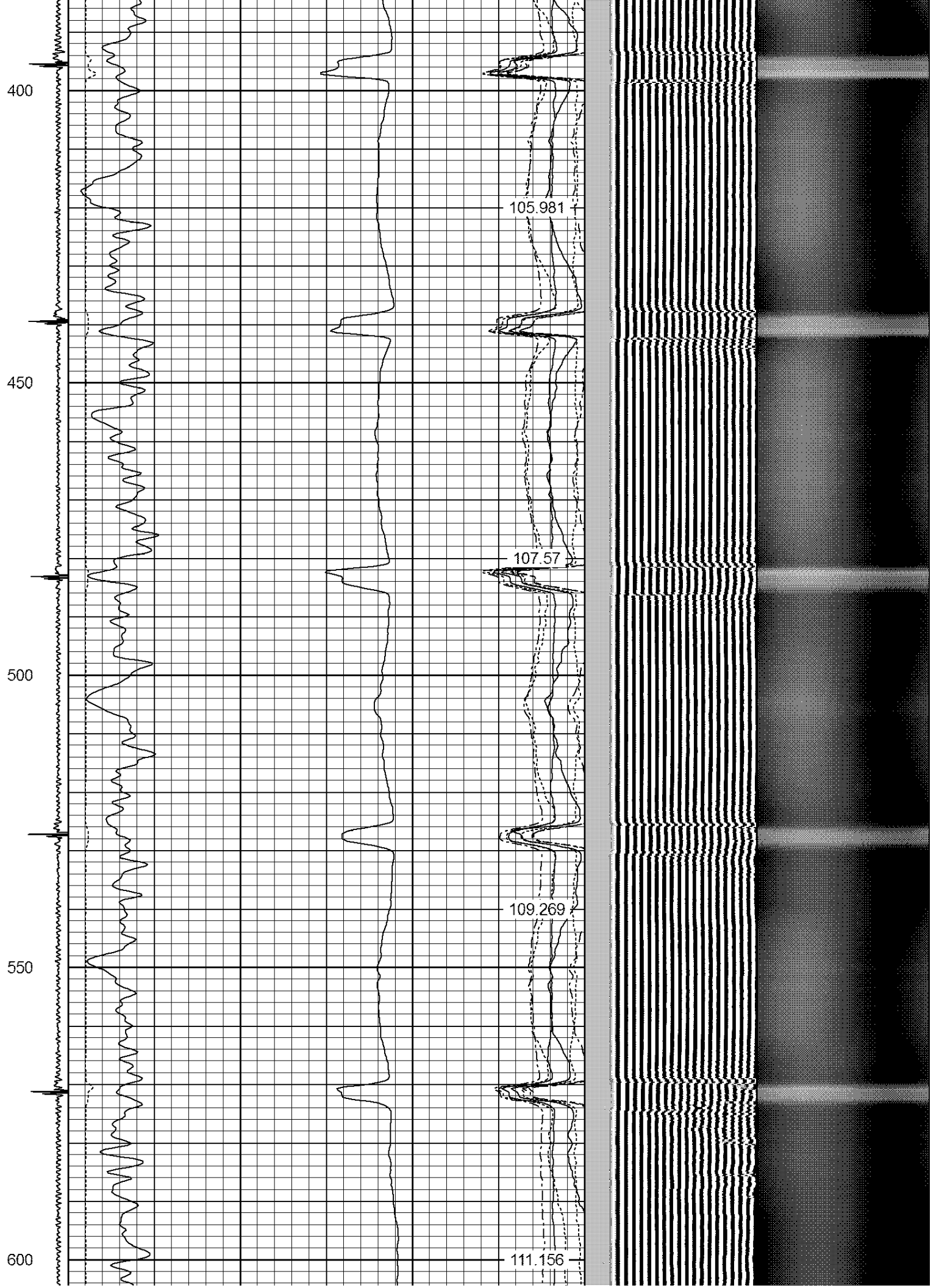
Sensor	Offset (ft)	Schematic	Description	Len (ft)	OD (in)	Wt (lb)

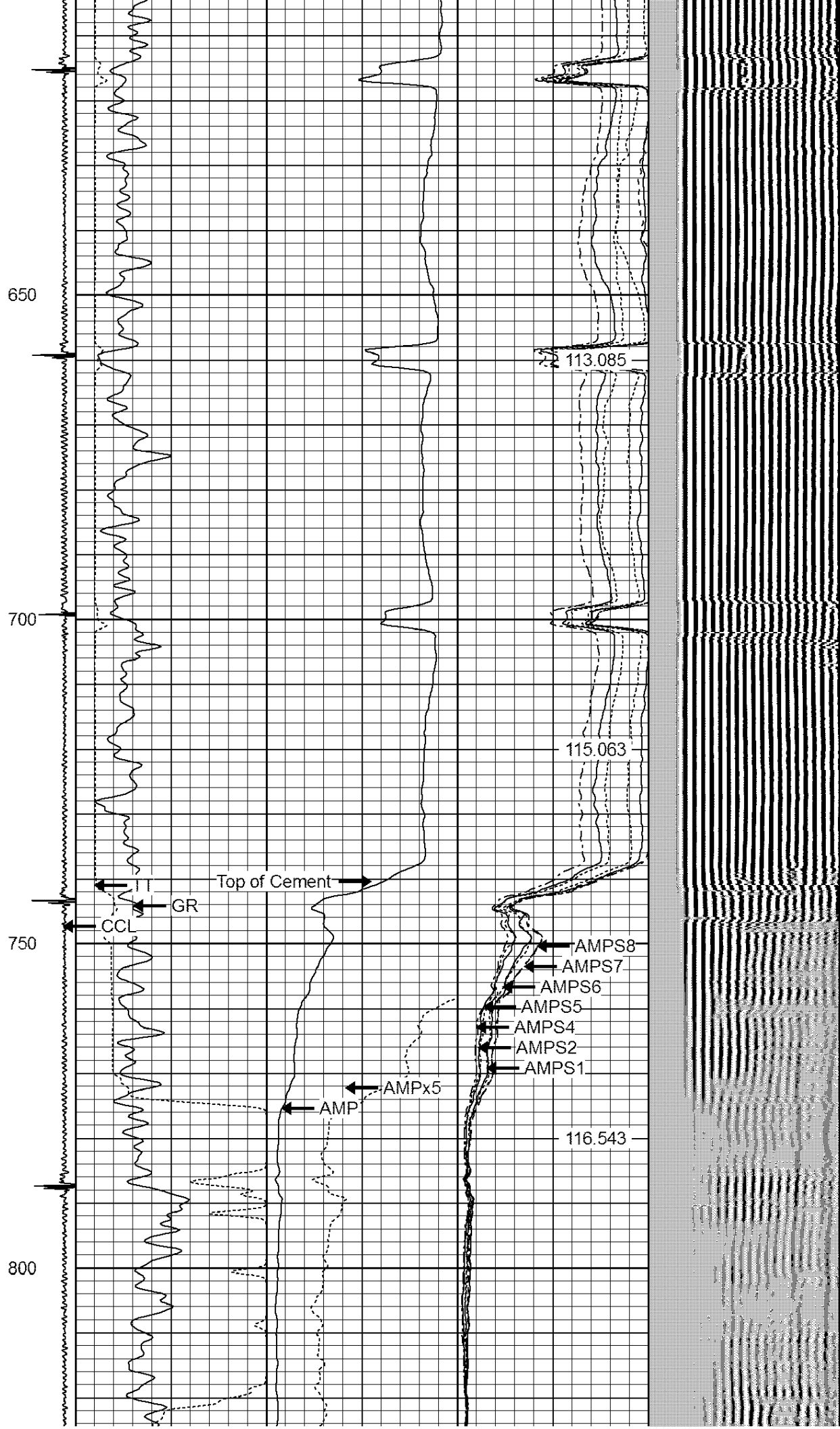
			PTS275	2.83	2.75	
HEADVOLT	16.08					
IntTemp	14.67					
WVF3FT	11.42					
WVFCAL	11.42					
WVFS1	11.42					
WVFS2	11.42					
WVFS3	11.42					
WVFS4	11.42					
WVFS5	11.42					
WVFS6	11.42					
WVFS7	11.42					
WVFS8	11.42					
WVF5FT	10.42					
CNLSC	6.00					
CNSSC	5.17					
CCL	3.64					
GR	0.90					
Dataset: dry creek 22-27.db: field/well/run1/pass5 Total Length: 18.92 ft Total Weight: 160.00 lb O.D. 2.75 in						

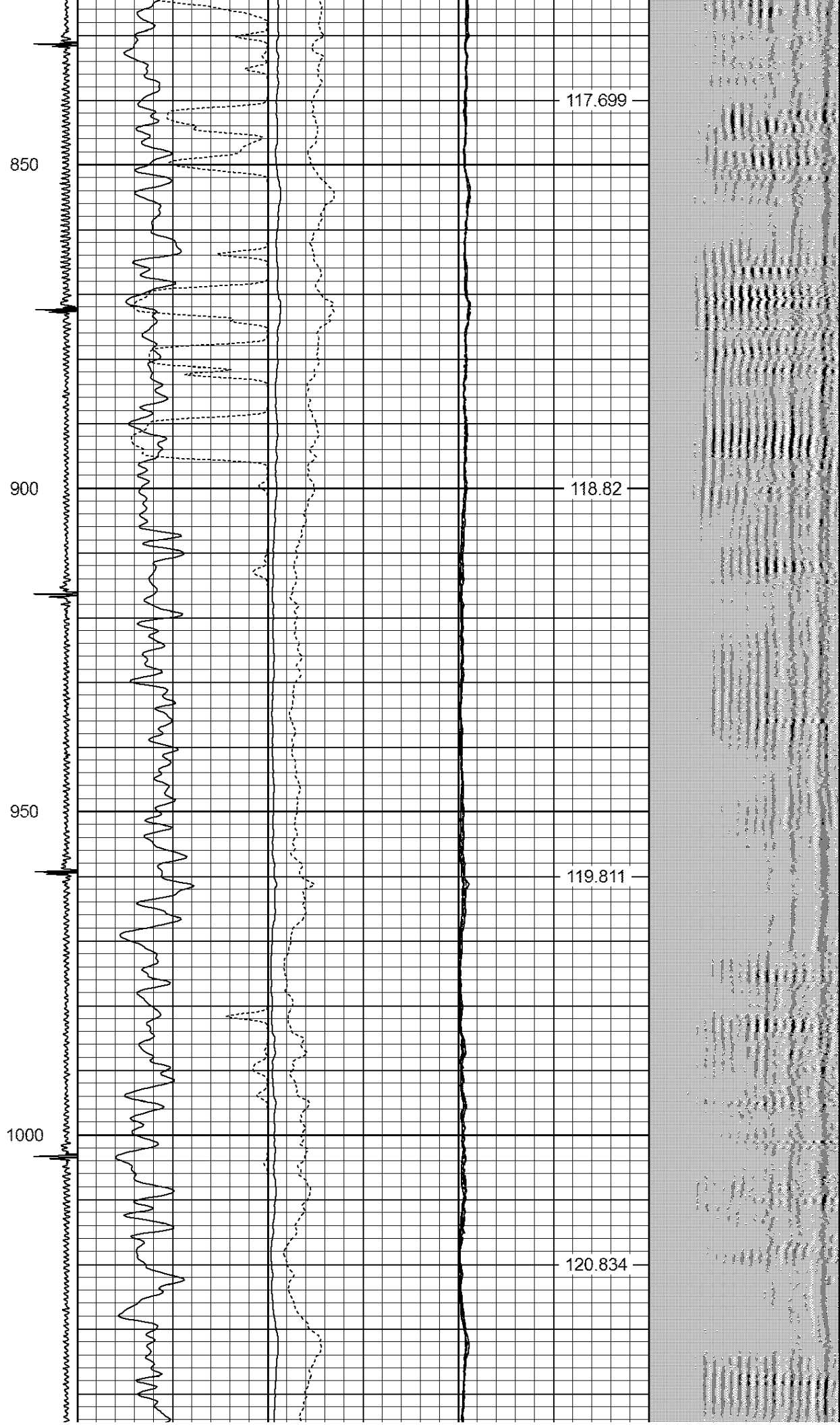
-9	CCL	1	200	TT (usec)	800	0	AMP (mV)	100	0	AMPS1	100	200	VDL	1200	1	Cement Map	8
			0	GR (GAPI)	200	0	AMPx5 (mV)	20	0	AMPS2	100				1		100
			200	GR (GAPI)	400				0	AMPS4	100						
			0	LSPD (ft/min)	250				0	AMPS5	100						
									0	AMPS6	100						
									0	AMPS7	100						
									0	AMPS8	100						
										IntTemp							
										(degF)							





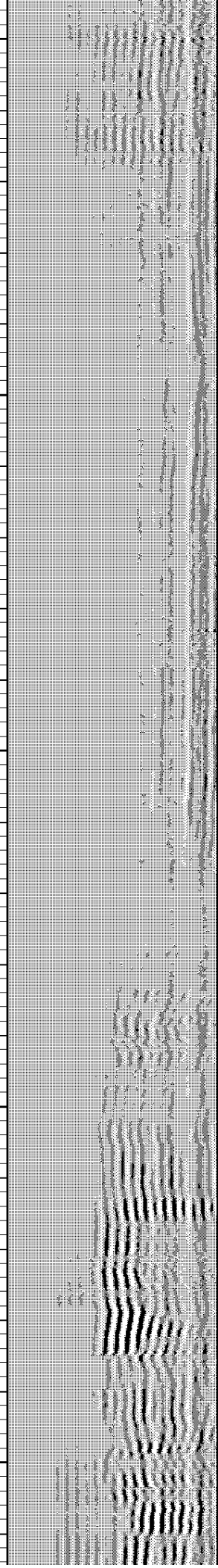






1050
1100
1150
1200
1250

121.711
122.586
123.211
124.13



1300

1350

1400

1450

125.019

125.889

26.781

CCL

GR

TT

AMPx5

AMP

AMPS8

AMPS7

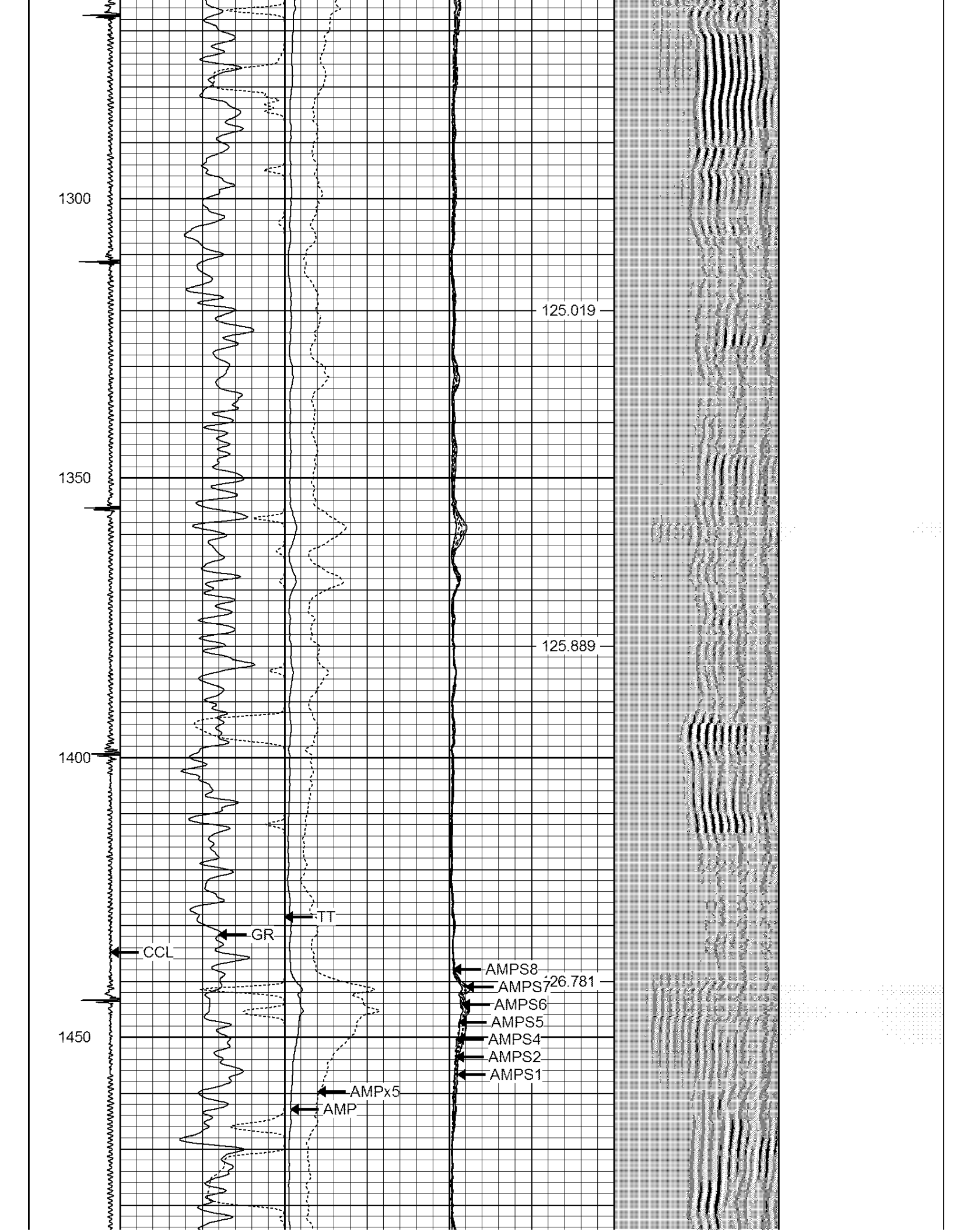
AMPS6

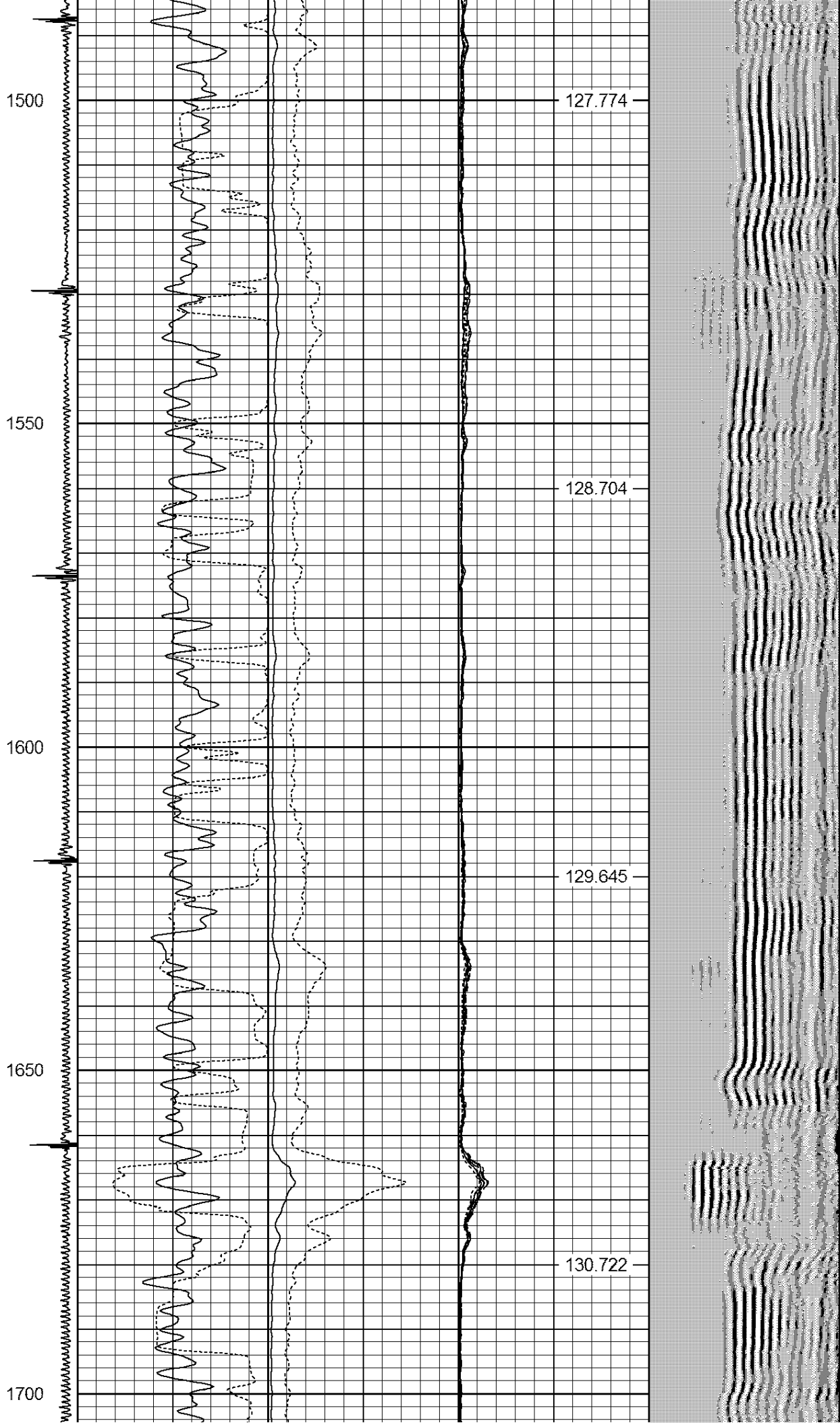
AMPS5

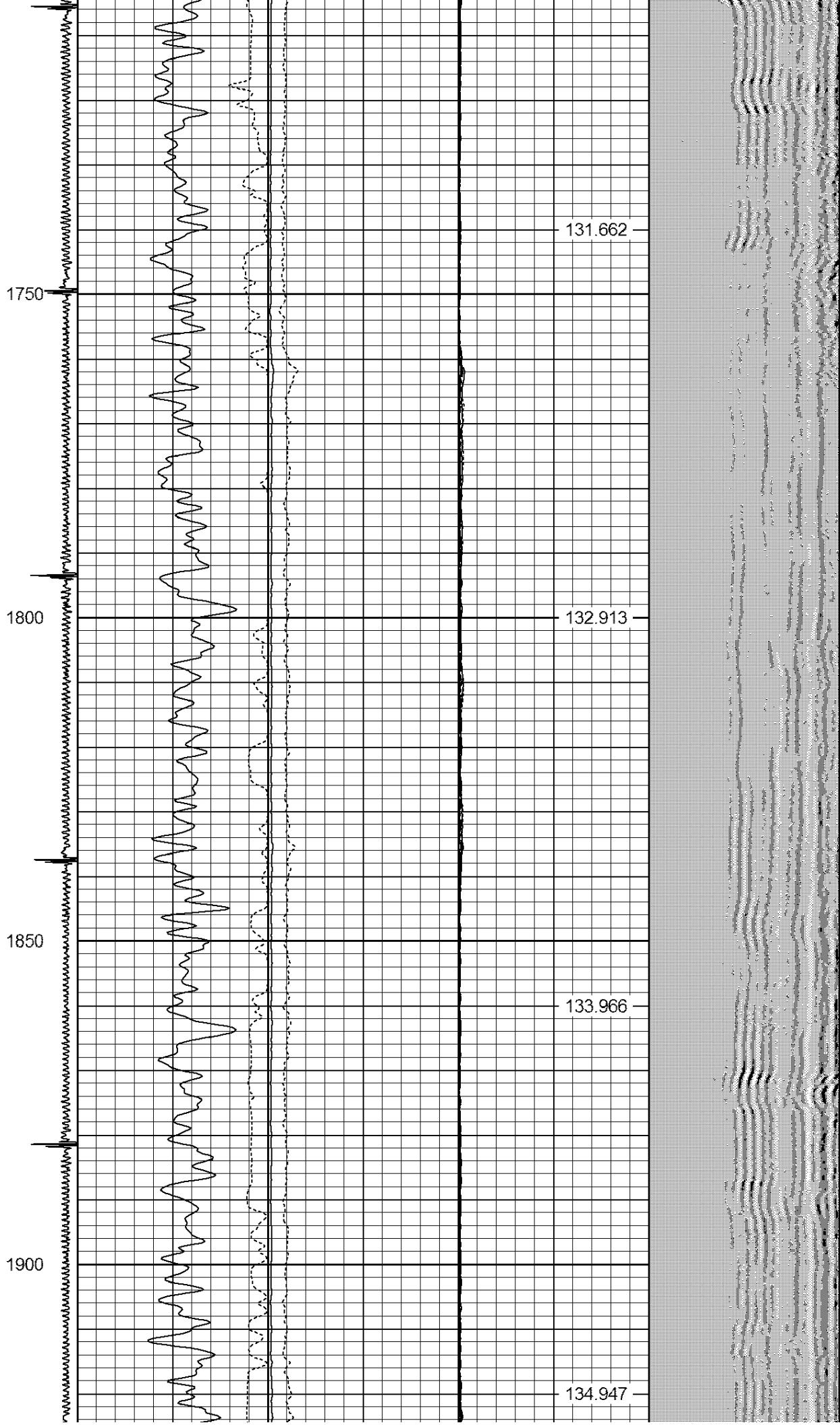
AMPS4

AMPS2

AMPS1







1950

2000

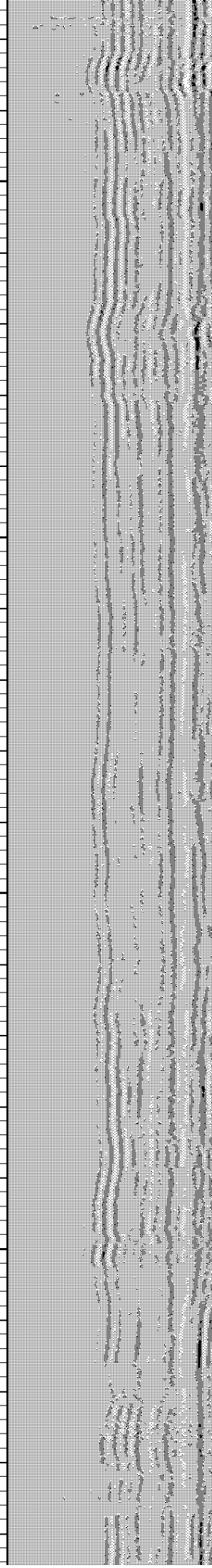
2050

2100

136.067

137.273

138.483



2150
2200
2250
2300
2350

139.39
140.386
141.543
142.563



2400

143.622

2450

144.828

2500

145.779

2550

146.246



2600

2650

2700

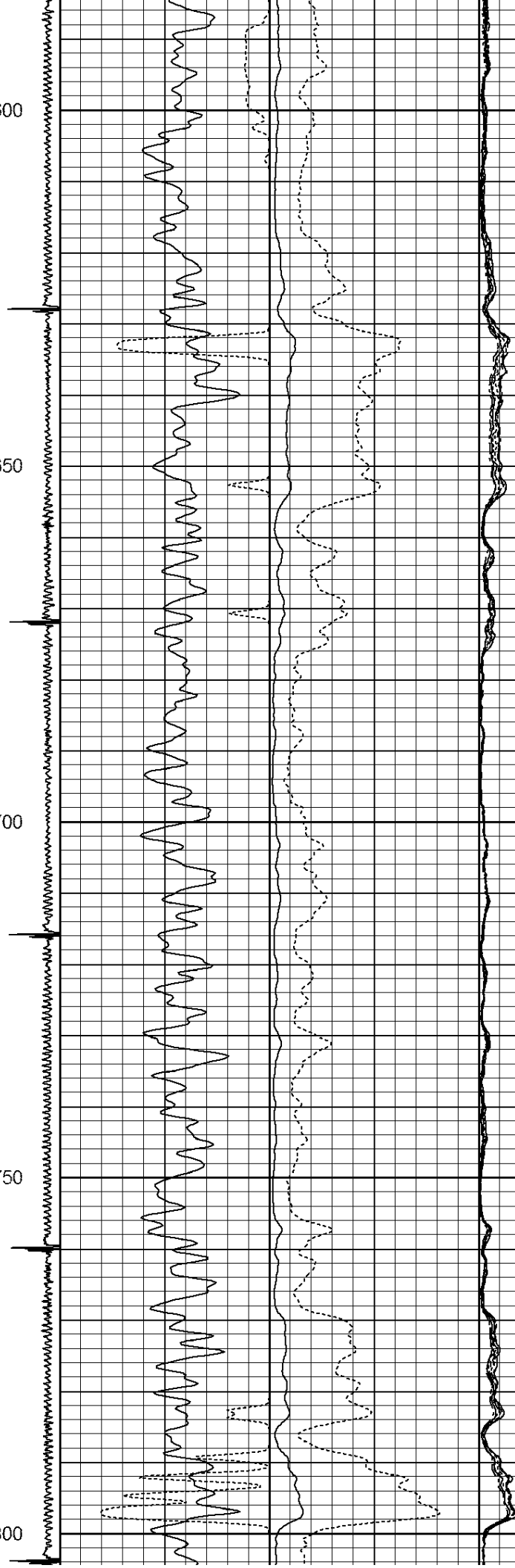
2750

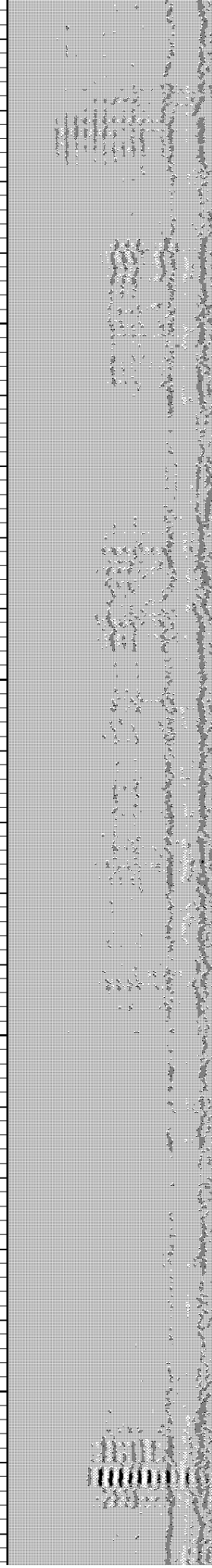
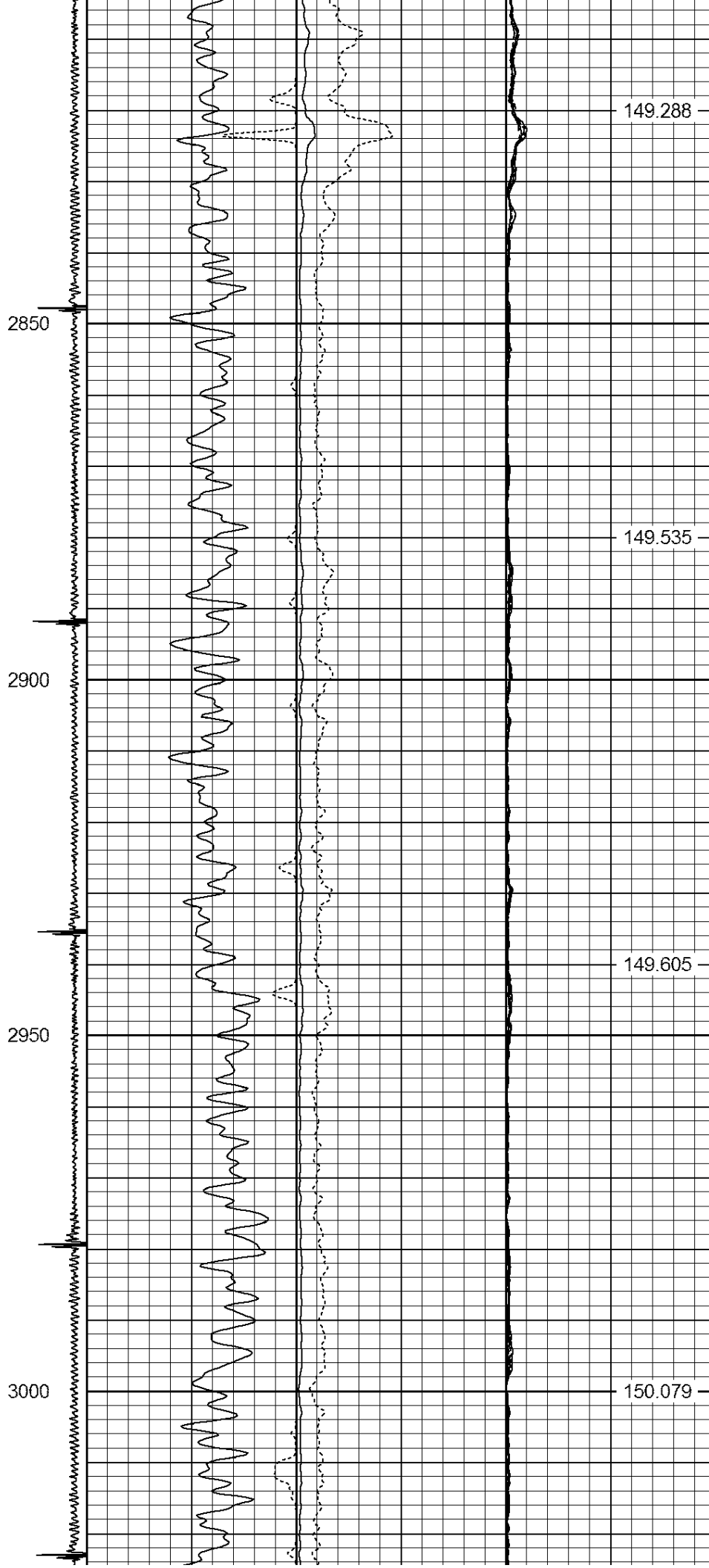
2800

147.465

148.262

148.842





3050

3100

3150

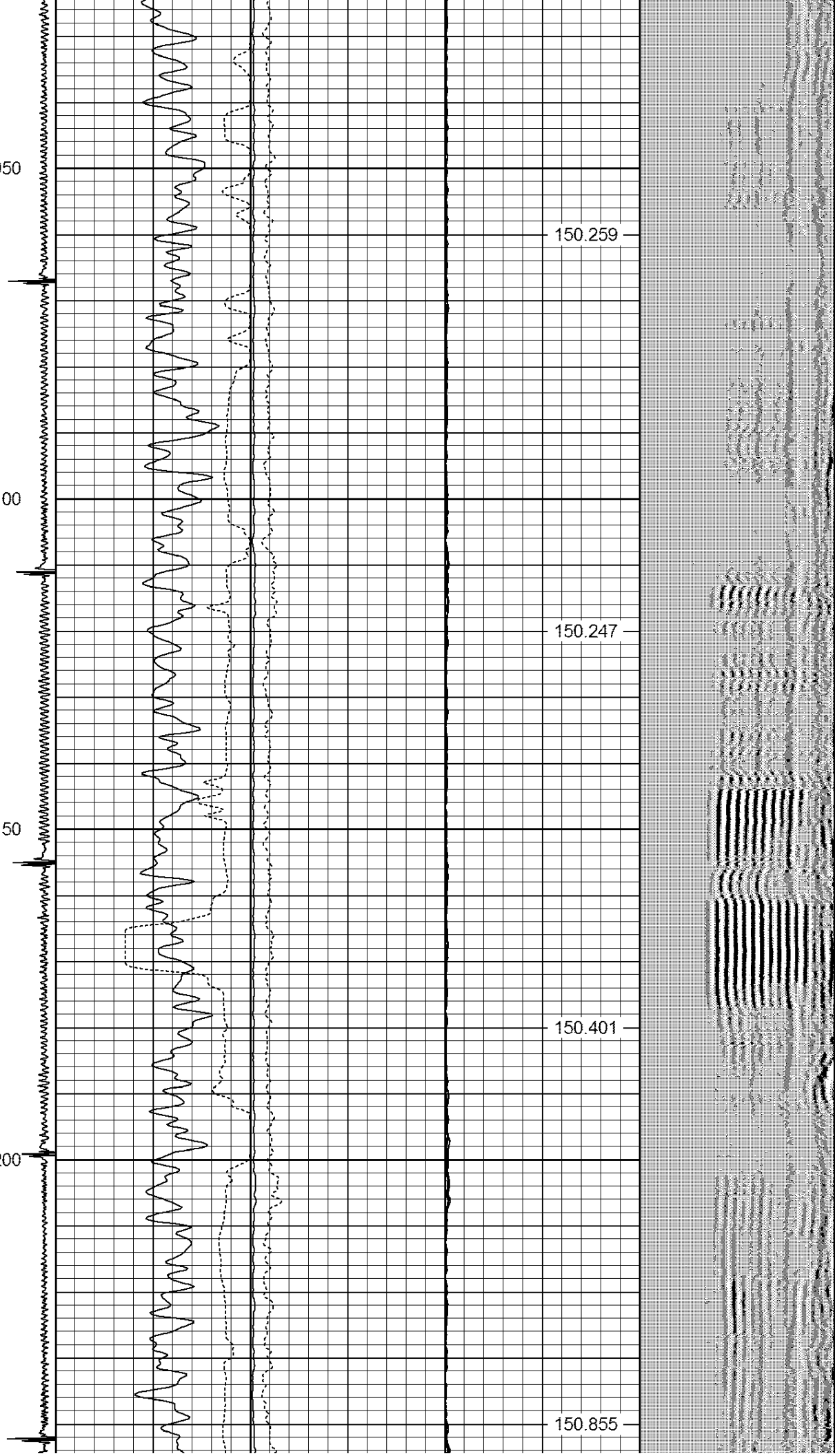
3200

150.259

150.247

150.401

150.855



3250

3300

3350

3400

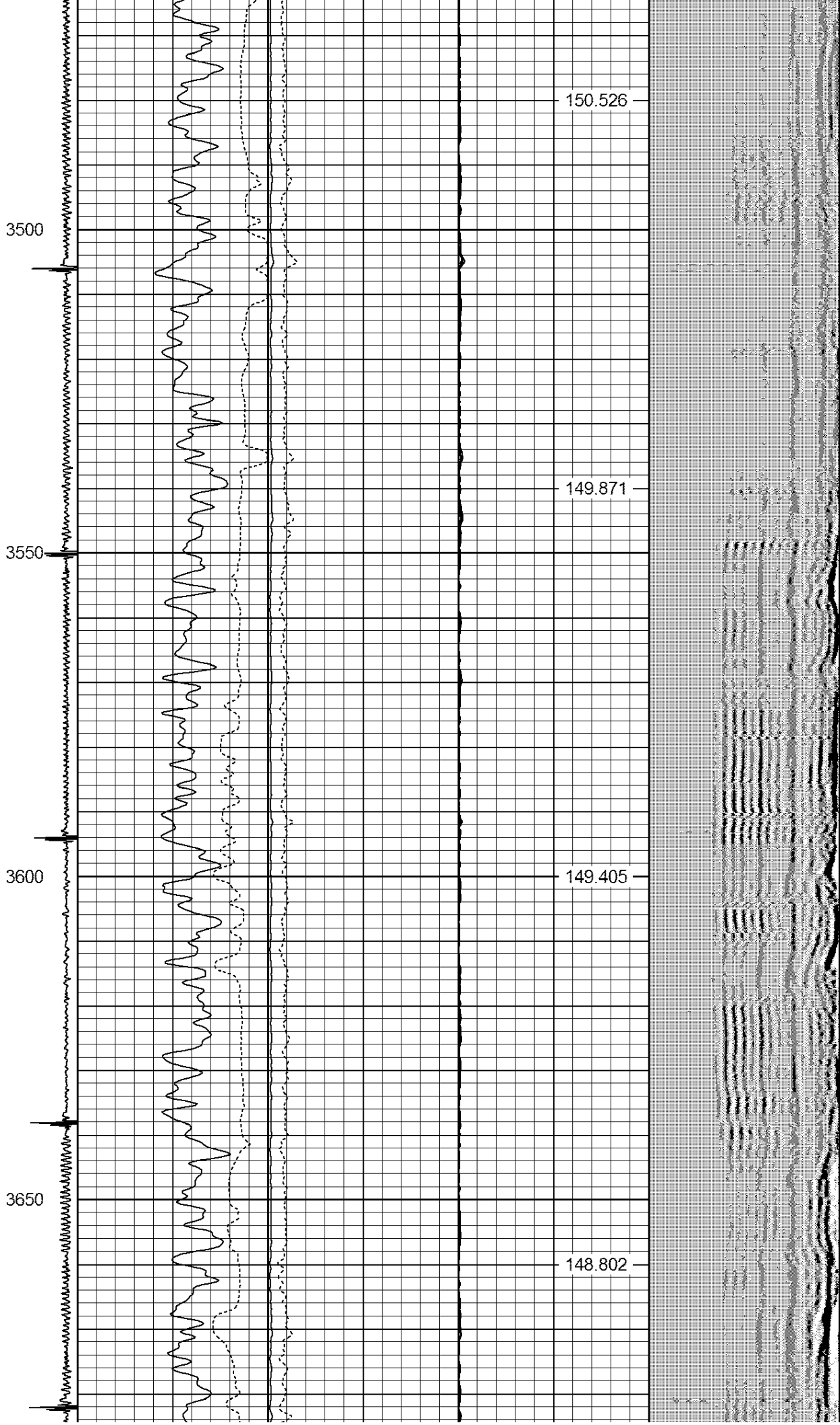
3450

150.89

151.181

151.023





3700

148.4

3750

147.7

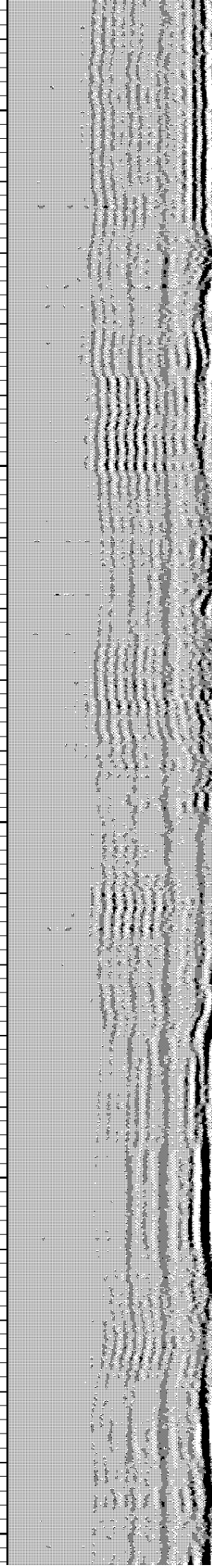
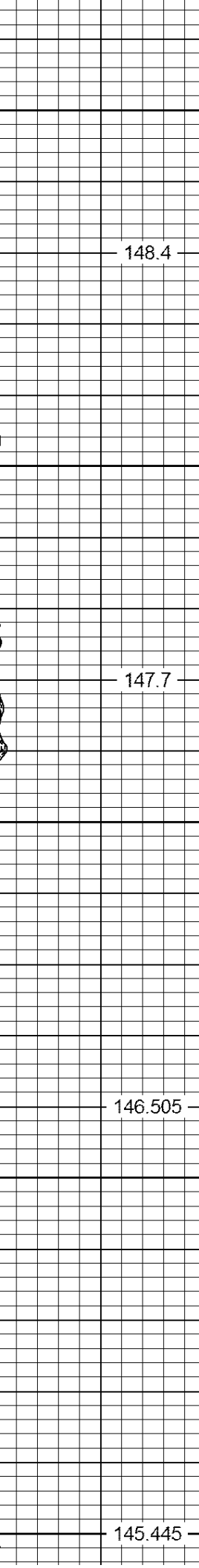
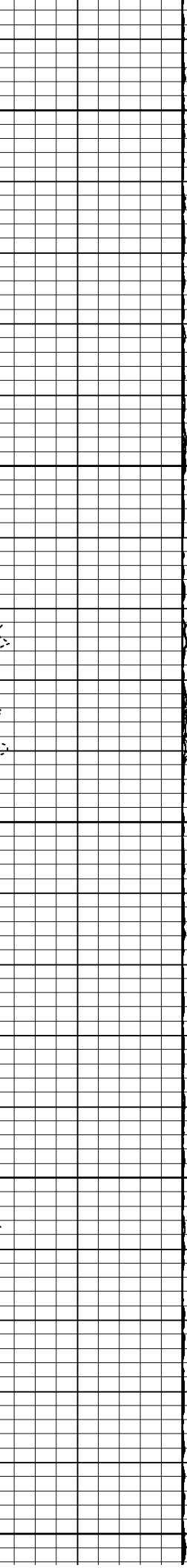
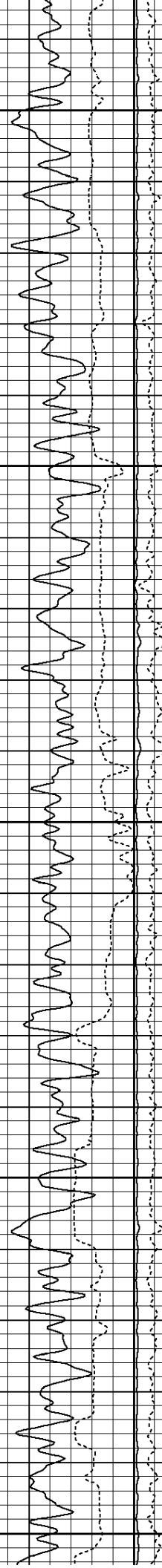
3800

146.505

3850

3900

145.445



3950

4000

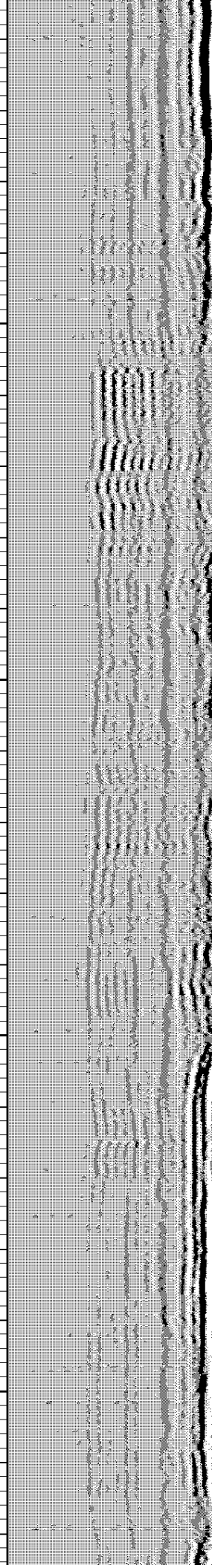
4050

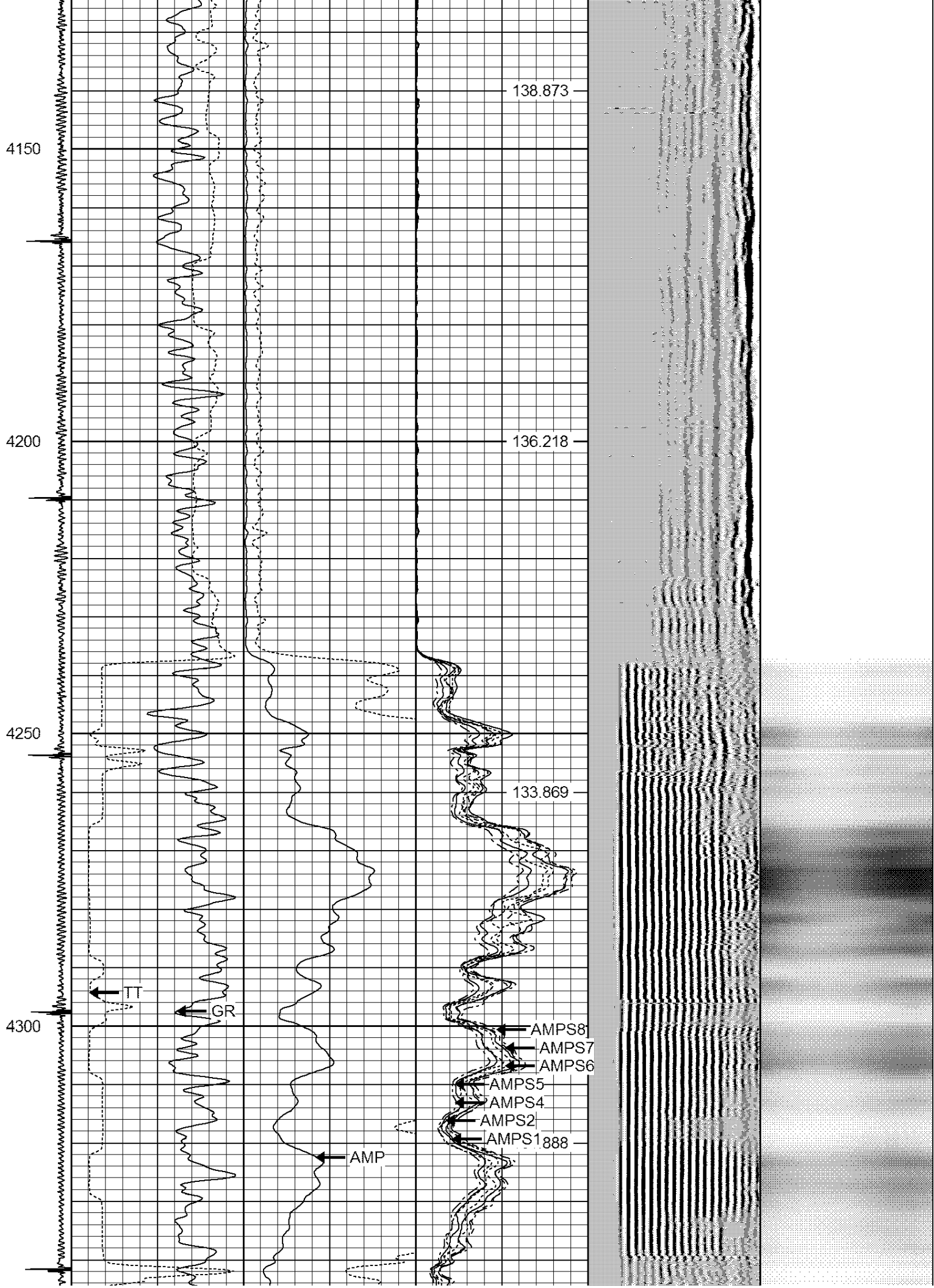
4100

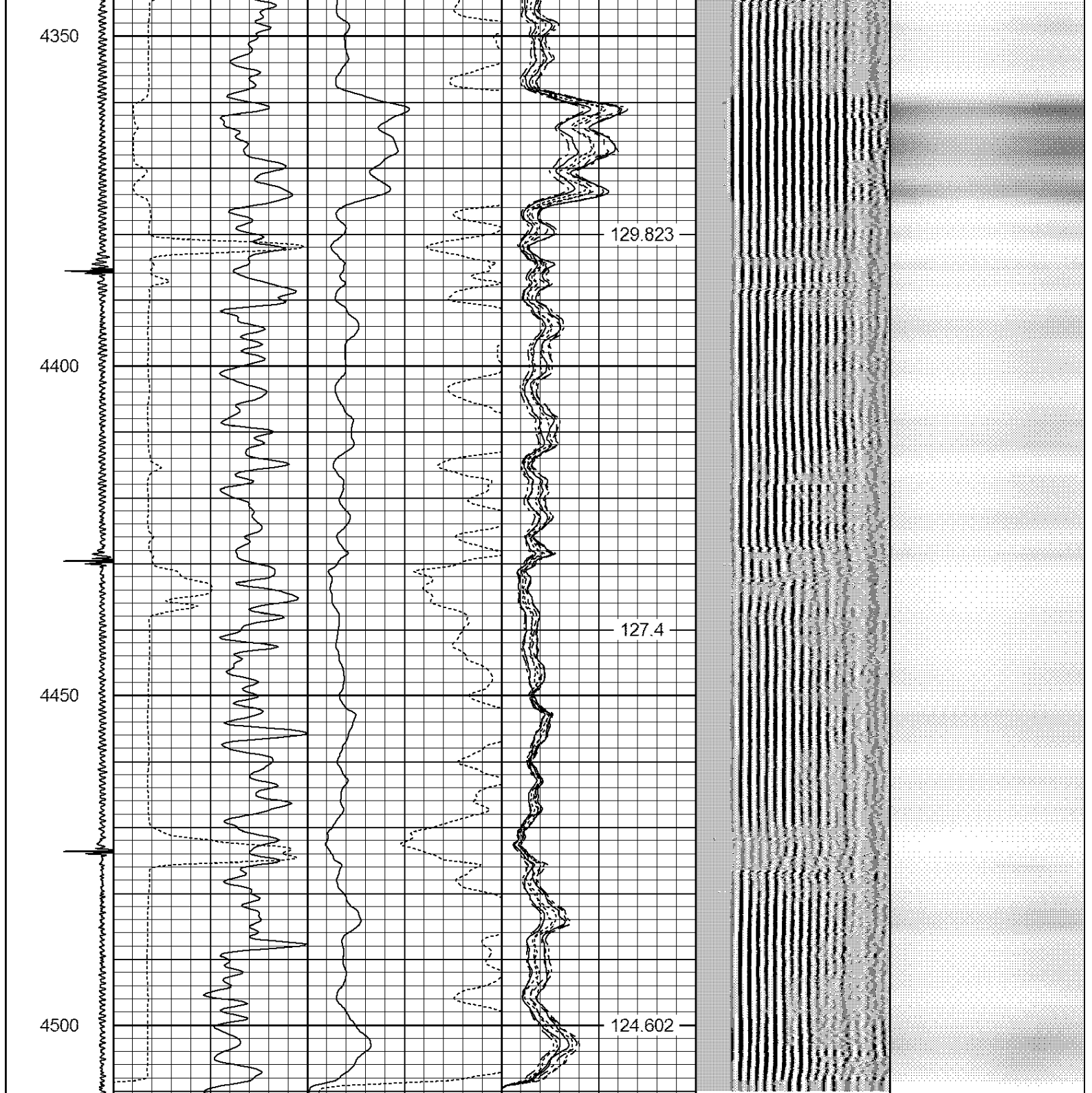
144.215

142.591

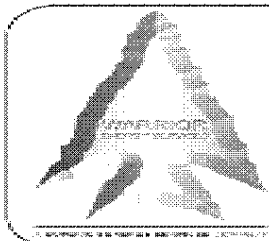
140.852







-9	CCL	1	200	TT (usec)	800	0	AMP (mV)	100	0	AMPS1	100	200	VDL	1200	1	Cement Map	8
		0	GR (GAPI)	200		0	AMPx5 (mV)	20	0	AMPS2	100				1		100
		200	GR (GAPI)	400					0	AMPS4	100						
		0	LSPD (ft/min)	250					0	AMPS5	100						
									0	AMPS6	100						
									0	AMPS7	100						
									0	AMPS8	100						
										IntTemp							
										(degF)							



WARRIOR

ENERGY SERVICES

Company KERR-McGEE OIL & GAS ONSHORE LP

Well DRY CREEK 22-27

Field WATTENBERG

County WELD

State COLORADO