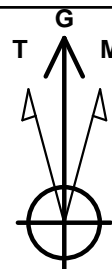
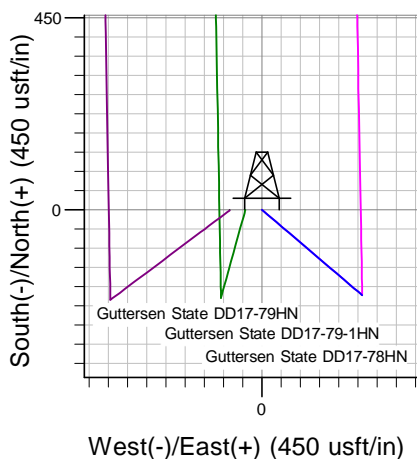
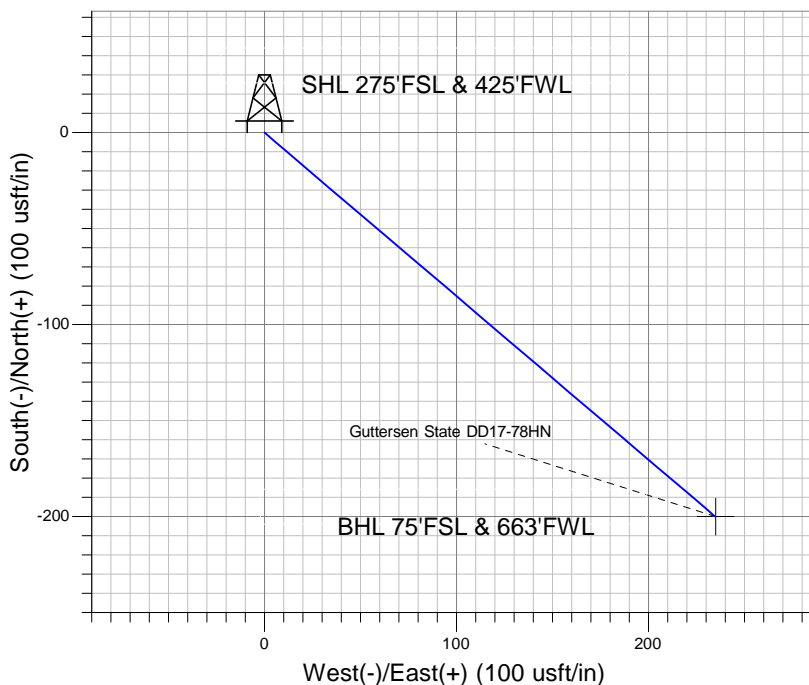
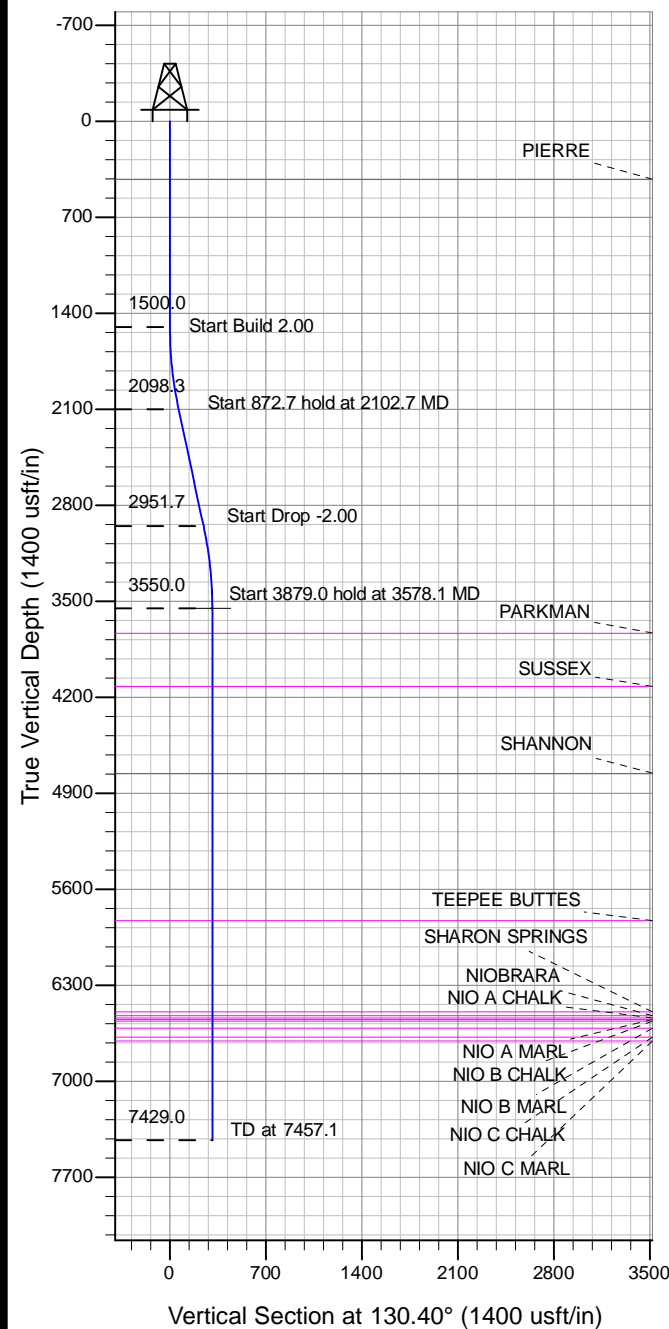


Project: Wattenberg Field
 Site: DD (Sec.17-T03N-R63W) Weld County, CO
 Well: Gutttersen State DD17-78HN
 Wellbore: Original Drilling
 Design: APD - Rev 2 (Pilot Hole)

Northern Region Drilling - Working

Geodetic System: US State Plane 1983
 Datum: North American Datum 1983
 Ellipsoid: GRS 1980
 Zone: Colorado Northern Zone
 System Datum: Mean Sea Level



Azimuths to Grid North
 True North: -0.67°
 Magnetic North: 7.71°
 Magnetic Field
 Strength: 52884.9snT
 Dip Angle: 66.89°
 Date: 6/6/2013
 Model: IGRF200510

Created by: Shailey Jewell

Date: 12:14, July 26 2013

Approved by:

Date:

Well Details: Gutttersen State DD17-78HN

Ground Level: 4820.0
 Northing: 1324248.49 Easting: 3287756.87
 Latitude: 40.218870 Longitude: -104.469530

WELLBORE TARGET DETAILS (LAT/LONG)

Name	TVD	+N/-S	+E/-W	Latitude	Longitude	Shape
Gutttersen State DD17-78HN PBHL 75'FSL, 663'FWL	3550.0	-200.0	235.0	40.218314	-104.468697	

SECTION DETAILS

Sec	MD	Inc	Azi	TVD	+N/-S	+E/-W	Dleg	TFace	VSect	Target
1	0.0	0.00	0.00	0.0	0.0	0.0	0.00	0.00	0.0	
2	1500.0	0.00	0.00	1500.0	0.0	0.0	0.00	0.00	0.0	
3	2102.7	12.05	130.40	2098.3	-40.9	48.1	2.00	130.40	63.2	
4	2975.4	12.05	130.40	2951.7	-159.1	186.9	0.00	0.00	245.4	
5	3578.1	0.00	0.00	3550.0	-200.0	235.0	2.00	180.00	308.6	Gutttersen State DD17-78HN PBHL 75'FSL, 663'FWL
6	7457.1	0.00	0.00	7429.0	-200.0	235.0	0.00	0.00	308.6	