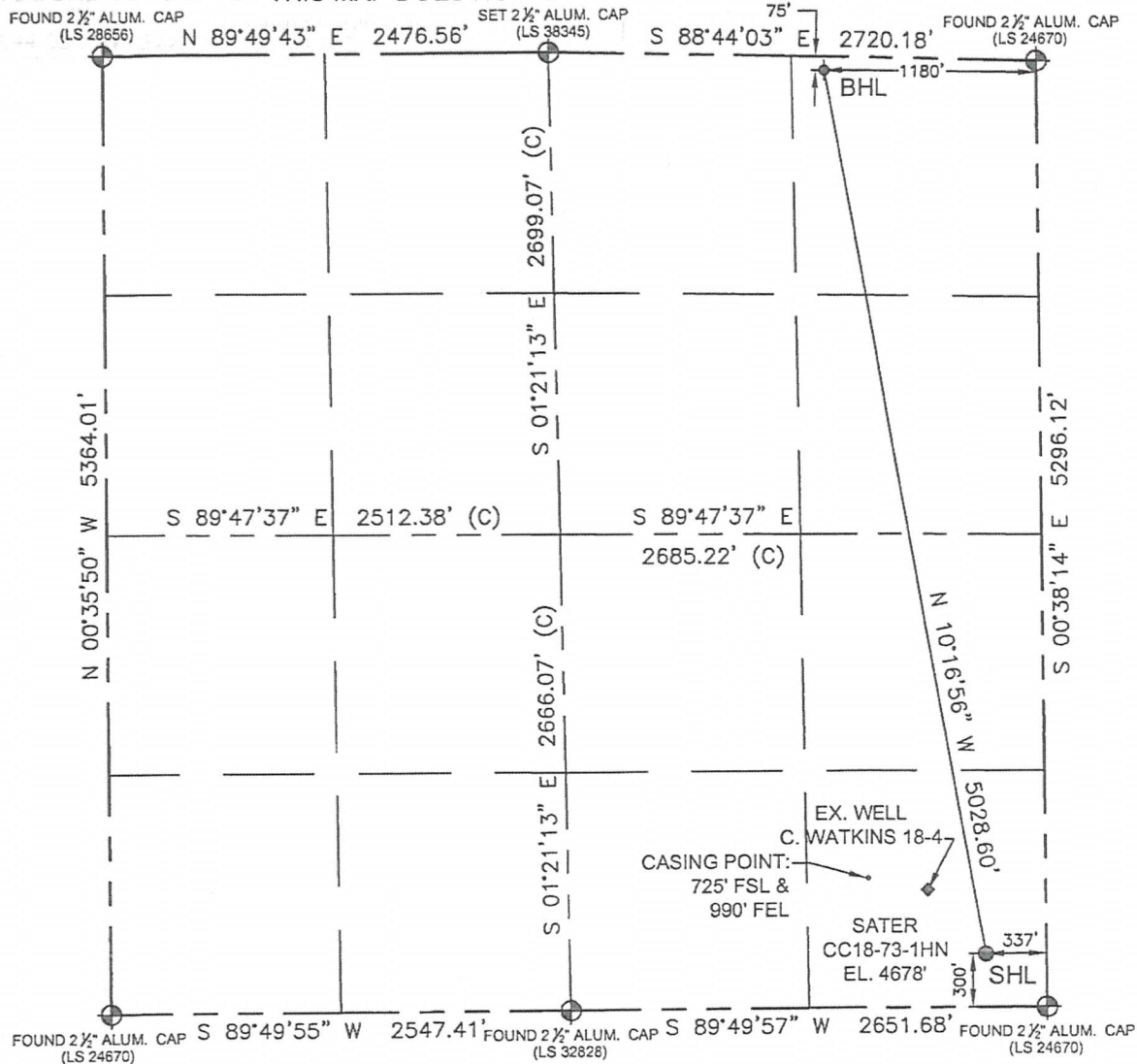


WELL LOCATION CERTIFICATE

SECTION: 18
TOWNSHIP: 4N
RANGE: 63W

THIS MAP DOES NOT REPRESENT A BOUNDARY SURVEY



In accordance with a request from Matt Verbit with Noble Energy Inc. Petroleum Field Services, LLC has determined the surface location of the SATER CC18-73-1HN to be 300' from the SOUTH line and 337' from the EAST line and the bottom hole to be 75' from the NORTH line and 1180' from the EAST line as measured at right angles from the section line of Section 18, Township 4 North, Range 63 West of the Sixth Principal Meridian, County of WELD, State of Colorado.

I hereby state that this Well Location Certificate was prepared by me, or under my direct supervision, that the fieldwork was completed on 5/17/13, for and on behalf of Noble Energy Inc., that this is not a Land Survey Plat or an Improvement Survey Plat, and that it is not to be relied upon for establishment of fence, building, or other future improvement lines.

SURFACE LOCATION:
LATITUDE: 40.30562°N
LONGITUDE: 104.47225°W
PDOP: 1.78
ELEV: 4678'
1/4 SE 1/4
NEAREST PROPERTY LINE: 300' South

BOTTOM HOLE:
LATITUDE: 40.31923°N
LONGITUDE: 104.47526°W

Notes:

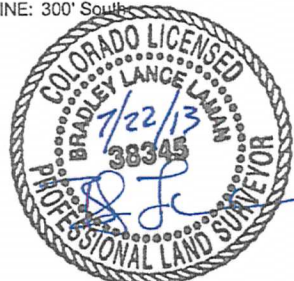
- 1) Bearings shown are Grid Bearings of the Colorado State Plane Coordinate System, North Zone, North American Datum 1983/2007. The lineal dimensions as shown herein are grid distances based upon the "U.S. Survey Foot."
- 2) Ground elevations are based on an observed GPS elevation (NAVD 1988 DATUM).
- 3) NEAREST EXISTING WELL IN SECTION 18 IS: C. WATKINS 18-4, 480' NW
- 4) IMPROVEMENTS: See LOCATION DRAWING exhibit for all visible improvements within 400' of disturbed area.
- 5) SURFACE USE: RANGELAND
- 6) INSTRUMENT OPERATOR: DAVID MACDONALD

Note:

According to Colorado law, you must commence any legal action based upon any defect in this W.L.C. within three years after you first discover such defect. In no event, may any action based upon any defect in this survey be commenced more than ten years after the date of this certification shown hereon. (13-80-105 C.R.S.)

LEGEND

- = FOUND MONUMENT
- = PROPOSED WELL
- = BOTTOM HOLE
- ◆ = EXISTING WELL



BRADLEY L. LAMAN, PLS 38345
COLORADO LICENSED PROFESSIONAL LAND SURVEYOR
FOR AND ON BEHALF OF P.F.S., LLC

DRAWING
DATE:
06-26-13

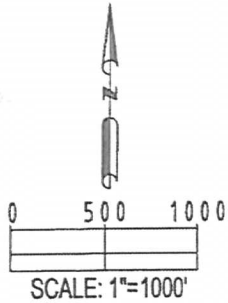
DRAWN BY:
CLM

CHECKED BY:
TJN

0 500 1000
SCALE: 1"=1000'

SITE SKETCH

SECTION: 18
TOWNSHIP: 4N
RANGE: 63W



① C WATKINS 18-4
SE1/4SE1/4
659' FSL / 653' FEL
LAT-40.30661°N
LONG-104.47338°W
PDOP: 1.78
ELEV: 4667'

② SATER CC 18-24
SW1/4SE1/4
1219' FSL / 2499' FEL
LAT-40.30819°N
LONG-104.48000°W
PDOP: 1.78
ELEV: 4661'

③ SATER CC 18-25D
SW1/4SE1/4
1242' FSL / 2499' FEL
LAT-40.30826°N
LONG-104.48000°W
PDOP: 1.78
ELEV: 4661'

④ SATER CC 18-23
NE1/4SE1/4
1339' FSL / 1233' FEL
LAT-40.30849°N
LONG-104.47546°W
PDOP: 1.78
ELEV: 4653'

⑤ WATKINS 18-9
NE1/4SE1/4
1949' FSL / 835' FEL
LAT-40.31016°N
LONG-104.47403°W
PDOP: 1.78
ELEV: 4651'

⑥ C WATKINS 18-6
SE1/4NE1/4
2017' FNL / 628' FEL
LAT-40.31385°N
LONG-104.47329°W
PDOP: 1.78
ELEV: 4650'

⑦ WATKINS CC 18-07
SW1/4NE1/4
2021' FNL / 1993' FEL
LAT-40.31396°N
LONG-104.47818°W
PDOP: 1.78
ELEV: 4635'

⑧ SATER CC 18-17D
SW1/4NE1/4
1984' FNL / 2020' FEL
LAT-40.31406°N
LONG-104.47828°W
PDOP: 1.78
ELEV: 4637'

⑨ SATER CC 18-18
SW1/4NE1/4
1370' FNL / 2577' FEL
LAT-40.31580°N
LONG-104.48028°W
PDOP: 1.78
ELEV: 4632'

⑪ SATER CC 18-01
NE1/4NE1/4
498' FNL / 499' FEL
LAT-40.31801°N
LONG-104.47282°W
PDOP: 1.78
ELEV: 4659'

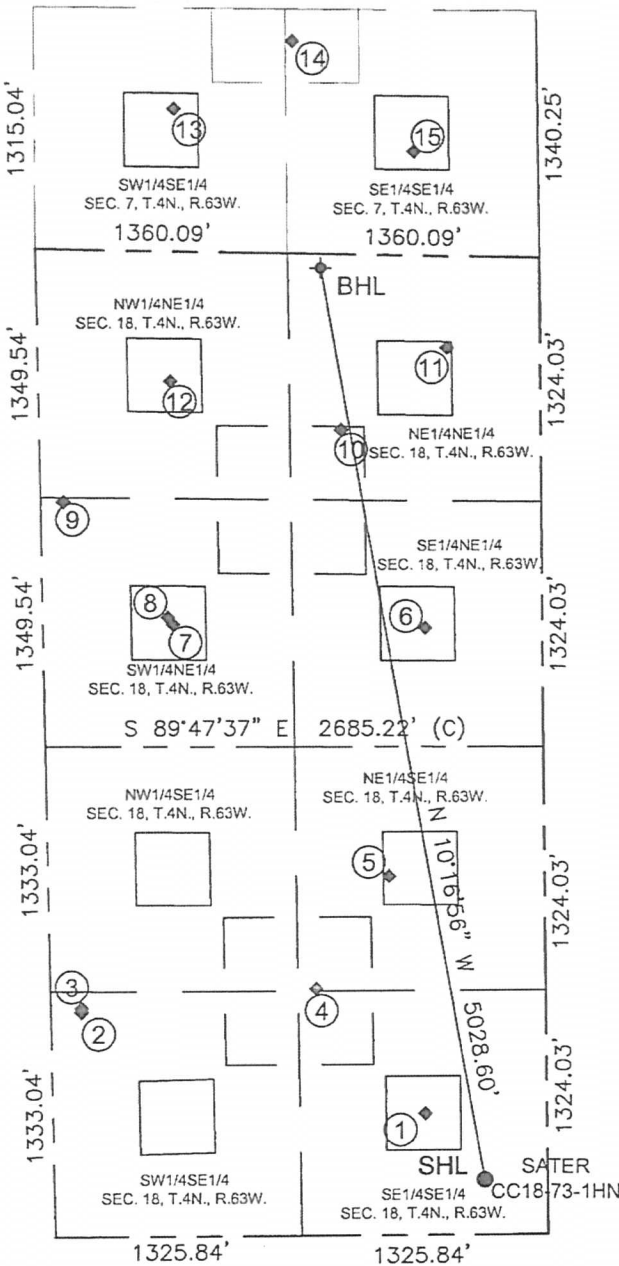
⑬ WOLFE USX CC 7-15
SW1/4SE1/4
776' FSL / 1966' FEL
LAT-40.32164°N
LONG-104.47809°W
PDOP: 1.78
ELEV: 4625'

⑮ WOLFE USX CC 7-16
SW1/4SE1/4
565' FSL / 667' FEL
LAT-40.32094°N
LONG-104.47343°W
PDOP: 1.78
ELEV: 4641'

⑩ WATKINS CC 18-01J
NE1/4NE1/4
951' FNL / 1075' FEL
LAT-40.31681°N
LONG-104.47489°W
PDOP: 1.78
ELEV: 4640'

⑫ WATKINS CC 18-02
NW1/4NE1/4
704' FNL / 1998' FEL
LAT-40.31758°N
LONG-104.47820°W
PDOP: 1.78
ELEV: 4644'

⑭ WOLFE USX CC 7-23
SE1/4SE1/4
1155' FSL / 1320' FEL
LAT-40.32262°N
LONG-104.47578°W
PDOP: 1.78
ELEV: 4627'



FIELD
DATE:
05-17-13

DRAWING
DATE:
07-22-13

DRAWN BY:
CLM

CHECKED BY:
TJN

LEGEND

- = FOUND MONUMENT
- = PROPOSED WELL
- ⬥ = BOTTOM HOLE
- ◆ = EXISTING WELL