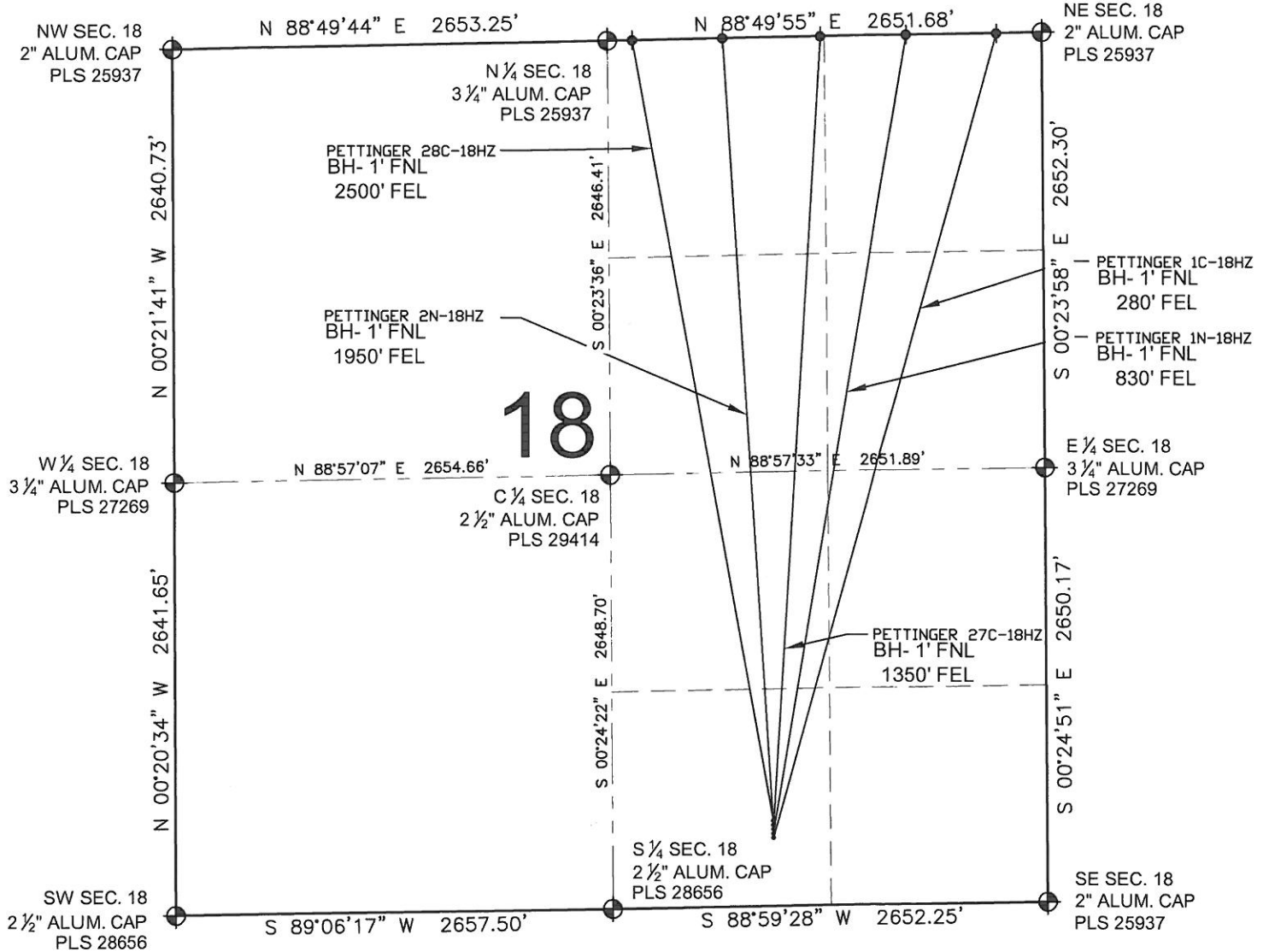


# PETTINGER 27C-18HZ MULTI-WELL PLAN

SECTION 18, TOWNSHIP 1 NORTH, RANGE 65 WEST, 6TH P.M.



**NOTES:**

- PETTINGER 1C-18HZ TO BE AT 417' FSL, 1673' FEL.  
BOTTOM HOLE AT 1' FNL & 280' FEL.
- PETTINGER 1N-18HZ TO BE AT 443' FSL, 1673' FEL.  
BOTTOM HOLE AT 1' FNL & 830' FEL.
- PETTINGER 27C-18HZ TO BE AT 469' FSL, 1673' FEL.  
BOTTOM HOLE AT 1' FNL & 1350' FEL.
- PETTINGER 2N-18HZ TO BE AT 495' FSL, 1673' FEL.  
BOTTOM HOLE AT 1' FNL & 1950' FEL.
- PETTINGER 28C-18HZ TO BE AT 521' FSL, 1673' FEL.  
BOTTOM HOLE AT 1' FNL & 2500' FEL.

**LEGEND**

- ⊕ = EXISTING MONUMENT
- ⊙ = PROPOSED WELL
- ⬤ = BOTTOM HOLE
- ⬧ = EXISTING WELL
- BH= BOTTOM HOLE

PREPARED BY:



KERR-MCGEE OIL & GAS ONSHORE LP

FIELD DATE:  
03-18-13

DRAWING DATE:  
06-28-13

SURFACE LOCATION:

SW 1/4 SE 1/4, SEC. 18, T1N, R65W, 6TH P.M.  
WELD COUNTY, COLORADO

