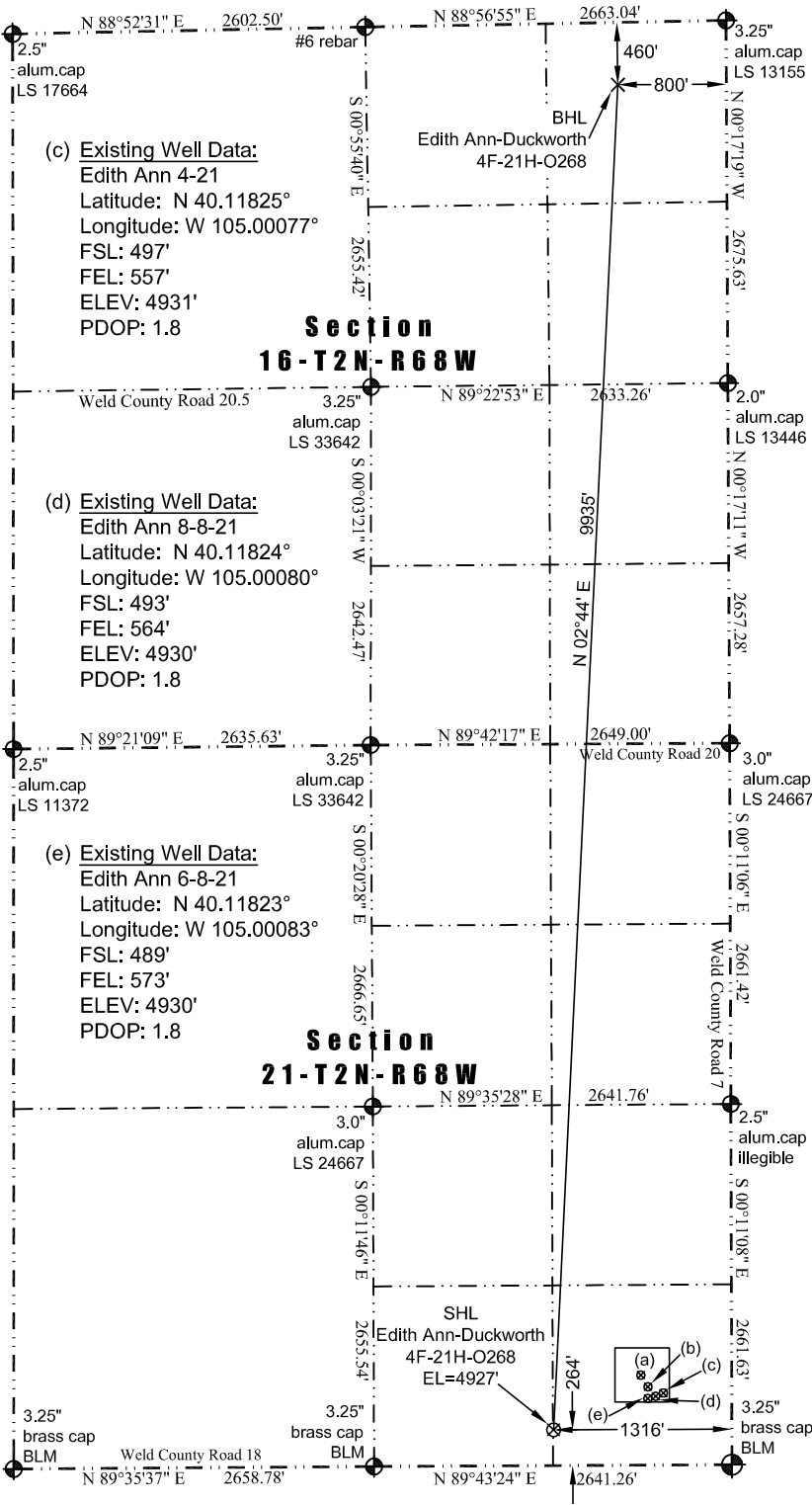
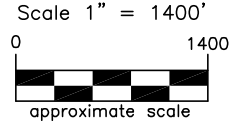


JR Land Surveying, LLC
 8114 Northstar Drive
 Windsor, Colorado 80528
 P. 970-576-4641

WELL LOCATION CERTIFICATE

THIS MAP DOES NOT REPRESENT A BOUNDARY SURVEY



(c) Existing Well Data:
 Edith Ann 4-21
 Latitude: N 40.11825°
 Longitude: W 105.00077°
 FSL: 497'
 FEL: 557'
 ELEV: 4931'
 PDOP: 1.8

**Section
 16-T2N-R68W**

(d) Existing Well Data:
 Edith Ann 8-8-21
 Latitude: N 40.11824°
 Longitude: W 105.00080°
 FSL: 493'
 FEL: 564'
 ELEV: 4930'
 PDOP: 1.8

(e) Existing Well Data:
 Edith Ann 6-8-21
 Latitude: N 40.11823°
 Longitude: W 105.00083°
 FSL: 489'
 FEL: 573'
 ELEV: 4930'
 PDOP: 1.8

**Section
 21-T2N-R68W**

LEGEND
 ♦ - found survey monument
 (C) - calculated dimension

(a) Existing Well Data:
 Jillson 'A' #3
 Latitude: N 40.11867°
 Longitude: W 105.00115°
 FSL: 651'
 FEL: 661'
 ELEV: 4928'
 PDOP: 1.8

(b) Existing Well Data:
 Edith Ann 44-21
 Latitude: N 40.11838°
 Longitude: W 105.00090°
 FSL: 544'
 FEL: 591'
 ELEV: 4930'
 PDOP: 1.8

Nearest:
 Building: 450' southeast
 Above Ground Utility: 287' southwest
 Public Road: 250' south
 Railroad: 19,490' southwest
 Property Line: 264' south
 Well Window: SHL is 498' outside
 Existing Well:
 Jillson 'A' #3, 761' northeast

In accordance with a request from Jay Knutson of EnCana Oil & Gas (USA) Inc., JR Land Surveying, LLC has determined the location of the **Edith Ann-Duckworth 4F-21H-O268 well site** to be SHL: 264' FSL and 13'16" FEL, (BHL: 460' FNL and 800' FEL), as measured at ninety (90) degrees from the section lines of Sections 16 and 21, Township 2 North, Range 68 West of the 6th Principal Meridian, Weld County Colorado.

Proposed Surface Hole Data:
 Latitude: N 40.11761° (BHL: 40.14485°)
 Longitude: W 105.00349° (BHL: 105.00159°)
 PDOP: 2.0

- Notes:
- 1) Bearings and distances based on NAD 83 Colorado North State Plane Coordinate, using RTK GPS observations taken 6/6/13 by operator John Rice
 - 2) Conversion factor to ground (1.000285153).
 - 3) Elevations based on NAVD 88 GPS heights and Geoid 2003 corrections.
 - 4) See Location Drawing for visible improvements within 500 feet of Pad Site.
 - 5) The surface use is a cultivated field.

NOTICE: According to Colorado law you must commence any legal action based upon any defect in this W.L.C. within three years after you first discover such defect. In no event may any action based upon any defect in this W.L.C. be commenced more than ten years from this said date of the certification shown hereon.

I hereby certify that this Well Location Certificate was prepared by me or under my direct supervision on 6/8/2013 for and on behalf of EnCana Oil & Gas (USA) Inc. That it is not a Land Survey Plat or an Improvement Survey Plat and that it is not to be relied upon for establishment of fences, buildings, or other future improvement lines.

John Robert McGehee LSR38219
 Well: Edith Ann-Duckworth 4F-21H-O268 WLC