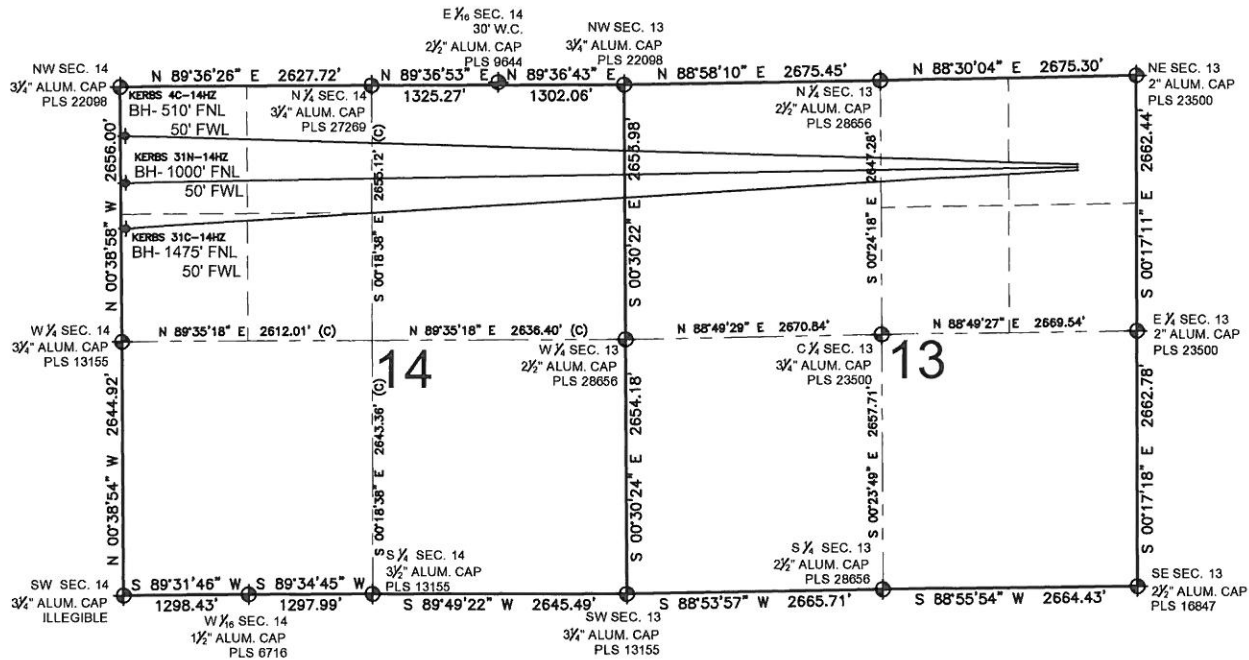


KERBS 31N-14HZ MULTI-WELL PLAN

SECTION 13, TOWNSHIP 3 NORTH, RANGE 68 WEST, 6TH P.M.



NOTES:

KERBS 4C-14HZ TO BE AT 914' FNL, 622' FEL.
 BOTTOM HOLE AT 510' FNL & 50' FWL, SEC. 14.
 KERBS 31N-14HZ TO BE AT 944' FNL, 622' FEL.
 BOTTOM HOLE AT 1000' FNL & 50' FWL, SEC. 14.
 KERBS 31C-14HZ TO BE AT 974' FNL, 622' FEL.
 BOTTOM HOLE AT 1475' FNL & 50' FWL, SEC. 14.

LEGEND

= EXISTING MONUMENT
 = BOTTOM HOLE
 BH= BOTTOM HOLE
 = PROPOSED WELL
 = EXISTING WELL

PREPARED BY:

PFS llc
 Petroleum Field Services, LLC
 1801 W. 13th Ave.
 Denver, CO 80204

KERR-MCGEE OIL & GAS ONSHORE LP

FIELD DATE:
03-19-13

DRAWING DATE:
06-19-13

SURFACE LOCATION:

NE 1/4 NE 1/4, SEC. 13, T3N, R68W, 6TH P.M.
 WELD COUNTY, COLORADO

