



# Kerr-McGee Oil & Gas Onshore LP

A subsidiary of Anadarko Petroleum Corporation

1099 18<sup>th</sup> Street  
Denver, CO 80202  
720-929-6000

July 19, 2013

Department of Natural Resources  
Oil and Gas Conservation Commission  
The Chancery Building  
1120 Lincoln St., Suite 801  
Denver, CO 80203

Re: **30 Day Certification Letter - 318A-e**  
KERBS 31C-14HZ  
Township 3 North, Range 68 West, Section 13: NE/4NE/4  
Unit Spacing: 3N-68W: SEC. 13: N2; SEC. 14: N2; SEC. 15: E2NE  
Weld County, Colorado

Ladies/Gentlemen:

Kerr-McGee Oil and Gas Onshore LP ("KMG") hereby certifies to the Director that a thirty (30) day notice has been given by certified mail to all owners in the proposed wellbore spacing unit. We have not received any objections to such well location, proposed spacing unit, or additional producing formation. KMG hereby requests the Director to approve the boundary well.

If you have any questions or issues regarding this permit, please contact Laura Abrams at (720) 929-6356.

Very truly yours,

**Kerr-McGee Oil and Gas Onshore LP**

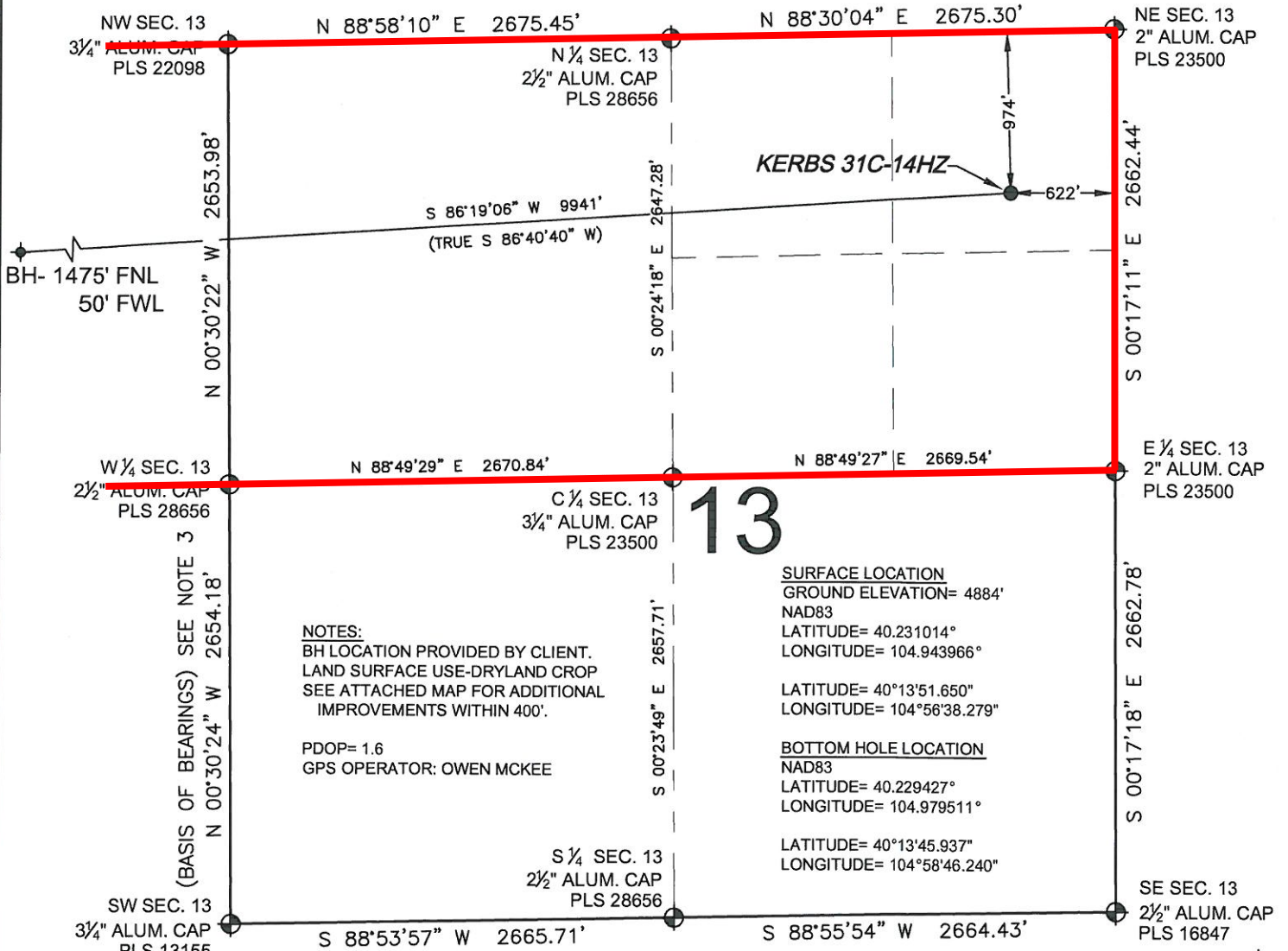
A handwritten signature in blue ink, appearing to read "Laura Abrams", written over a blue circular stamp or seal.

**Laura Abrams**  
**Regulatory Analyst II**

Enclosure

# WELL LOCATION CERTIFICATE: KERBS 31C-14HZ

SECTION 13, TOWNSHIP 3 NORTH, RANGE 68 WEST, 6TH P.M.



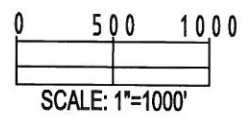
**NOTES:**  
 BH LOCATION PROVIDED BY CLIENT.  
 LAND SURFACE USE-DRYLAND CROP  
 SEE ATTACHED MAP FOR ADDITIONAL  
 IMPROVEMENTS WITHIN 400'.  
 PDOP= 1.6  
 GPS OPERATOR: OWEN MCKEE

**SURFACE LOCATION**  
 GROUND ELEVATION= 4884'  
 NAD83  
 LATITUDE= 40.231014°  
 LONGITUDE= 104.943966°  
 LATITUDE= 40°13'51.650"  
 LONGITUDE= 104°56'38.279"  
**BOTTOM HOLE LOCATION**  
 NAD83  
 LATITUDE= 40.229427°  
 LONGITUDE= 104.979511°  
 LATITUDE= 40°13'45.937"  
 LONGITUDE= 104°58'46.240"

WELL KERBS 31C-14HZ TO BE LOCATED 974' FNL AND 622' FEL

**LEGEND**

- ⊕ = EXISTING MONUMENT
- ⊙ = PROPOSED WELL
- ⊕ = BOTTOM HOLE
- ⊙ = EXISTING WELL
- BH = BOTTOM HOLE

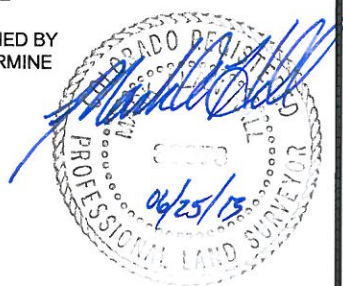


**NOTES:**

- THIS FIELD SURVEY CONFORMS TO THE MINIMUM STANDARDS SET BY THE C.O.G.C.C., RULE NO. 215
- HORIZONTAL POSITIONS AND ORTHOMETRIC ELEVATIONS SHOWN AT THE WELL HEAD, ARE BASED ON GPS-RTK POSITIONS DERIVED FROM MINIMUM 2-HOUR STATIC OBSERVATIONS CORRECTED BY THE NATIONAL GEODETIC SURVEY ONLINE POSITIONING USER SERVICE, O.P.U.S. DATUM: HORIZONTAL = NAD83/2007, VERTICAL = NAVD88
- THE BASIS OF BEARINGS ARE STATE PLANE COORDINATE SYSTEM GRID BEARINGS SHOWN HEREON BETWEEN THE DESCRIBED MONUMENTS SHOWN HEREON.
- GRID DISTANCES ARE SHOWN, AS MEASURED IN THE FIELD, WITH TIES TO WELLS MEASURED PERPENDICULAR TO SECTION LINES.

I, MARK A. HALL, A LICENSED PROFESSIONAL LAND SURVEYOR IN THE STATE OF COLORADO DO HEREBY CERTIFY TO **KERR-MCGEE OIL & GAS ONSHORE LP**, THAT THE SURVEY AND WELL LOCATION CERTIFICATE SHOWN HEREON WERE DONE BY ME OR UNDER MY DIRECT SUPERVISION AND THAT THE DRAWING SHOWN HEREON ACCURATELY DEPICTS THE PROPOSED LOCATION OF THE WELL. THIS CERTIFICATE DOES NOT REPRESENT A LAND SURVEY PLAT OR IMPROVEMENT SURVEY PLAT AS DEFINED BY C.R.S. 38-51-102 AND CANNOT BE RELIED UPON TO DETERMINE OWNERSHIP.

MARK A. HALL, PLS 36073  
 COLORADO LICENSED PROFESSIONAL LAND SURVEYOR  
 FOR AND ON BEHALF OF P.F.S., LLC



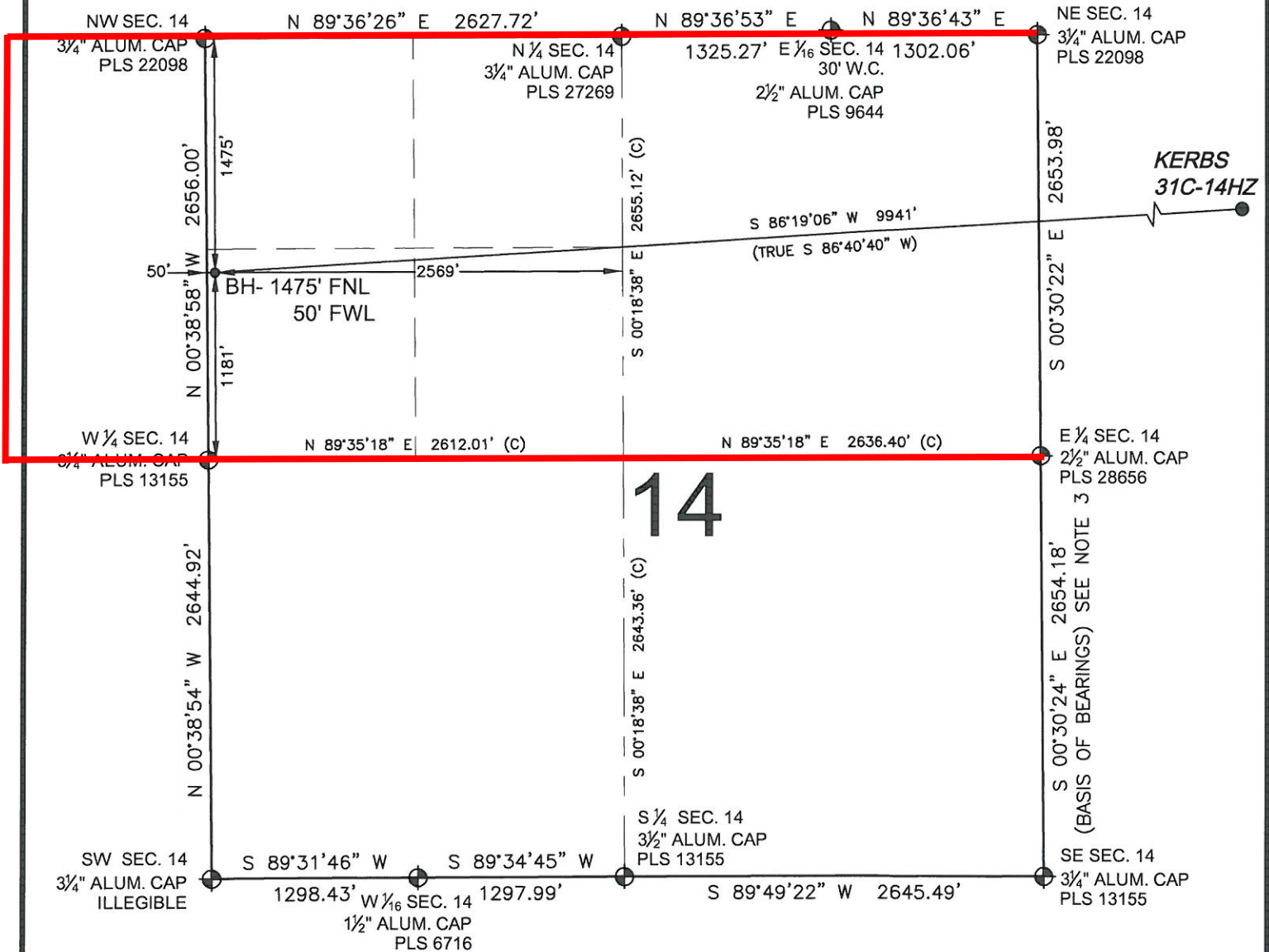
SHEET 1 OF 2

PREPARED BY:  Petroleum Field Services, LLC 1801 W. 13th Ave. Denver, CO 80204	FIELD DATE: 03-19-13	SURFACE LOCATION: NE 1/4 NE 1/4, SEC. 13, T3N, R68W, 6TH P.M. WELD COUNTY, COLORADO
	DRAWING DATE: 06-19-13	BY: SMF CHECKED: CLM

NOTICE: ACCORDING TO COLORADO LAW YOU MUST COMMENCE ANY LEGAL ACTION BASED UPON ANY DEFECT IN THIS SURVEY WITHIN THREE YEARS AFTER YOU FIRST DISCOVER SUCH DEFECT. IN NO EVENT MAY ANY ACTION BASED UPON ANY DEFECT IN THIS SURVEY BE COMMENCED MORE THAN TEN YEARS FROM THIS SAID DATE OF THIS CERTIFICATION SHOWN HEREON.

# WELL LOCATION CERTIFICATE: KERBS 31C-14HZ

SECTION 14, TOWNSHIP 3 NORTH, RANGE 68 WEST, 6TH P.M.



# 14

**LEGEND**

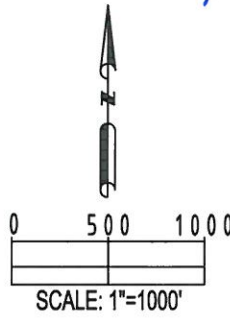
- ⊕ = EXISTING MONUMENT    ⊕ = BOTTOM HOLE
- = PROPOSED WELL        ◆ = EXISTING WELL
- BH = BOTTOM HOLE

**NOTES:**

1. THIS FIELD SURVEY CONFORMS TO THE MINIMUM STANDARDS SET BY THE C.O.G.C.C., RULE NO. 215
2. HORIZONTAL POSITIONS AND ORTHOMETRIC ELEVATIONS SHOWN AT THE WELL HEAD, ARE BASED ON GPS-RTK POSITIONS DERIVED FROM MINIMUM 2-HOUR STATIC OBSERVATIONS CORRECTED BY THE NATIONAL GEODETIC SURVEY ONLINE POSITIONING USER SERVICE, O.P.U.S. DATUM: HORIZONTAL = NAD83/2007, VERTICAL = NAVD88
3. THE BASIS OF BEARINGS ARE STATE PLANE COORDINATE SYSTEM GRID BEARINGS SHOWN HEREON BETWEEN THE DESCRIBED MONUMENTS SHOWN HEREON.
4. GRID DISTANCES ARE SHOWN, AS MEASURED IN THE FIELD, WITH TIES TO WELLS MEASURED PERPENDICULAR TO SECTION LINES.



MARK A. HALL, PLS 36073  
 COLORADO LICENSED PROFESSIONAL LAND SURVEYOR  
 FOR AND ON BEHALF OF P.F.S., LLC



SHEET 2 OF 2

PREPARED BY:  1801 W. 13th Ave. Denver, CO 80204	FIELD DATE: 03-19-13	SURFACE LOCATION: NE 1/4 NE 1/4, SEC. 13, T3N, R68W, 6TH P.M.
	DRAWING DATE: 06-19-13	BY: SMF
WELD COUNTY, COLORADO		

NOTICE: ACCORDING TO COLORADO LAW YOU MUST COMMENCE ANY LEGAL ACTION BASED UPON ANY DEFECT IN THIS SURVEY WITHIN THREE YEARS AFTER YOU FIRST DISCOVER SUCH DEFECT. IN NO EVENT MAY ANY ACTION BASED UPON ANY DEFECT IN THIS SURVEY BE COMMENCED MORE THAN TEN YEARS FROM THIS SAID DATE OF THIS CERTIFICATION SHOWN HEREON.