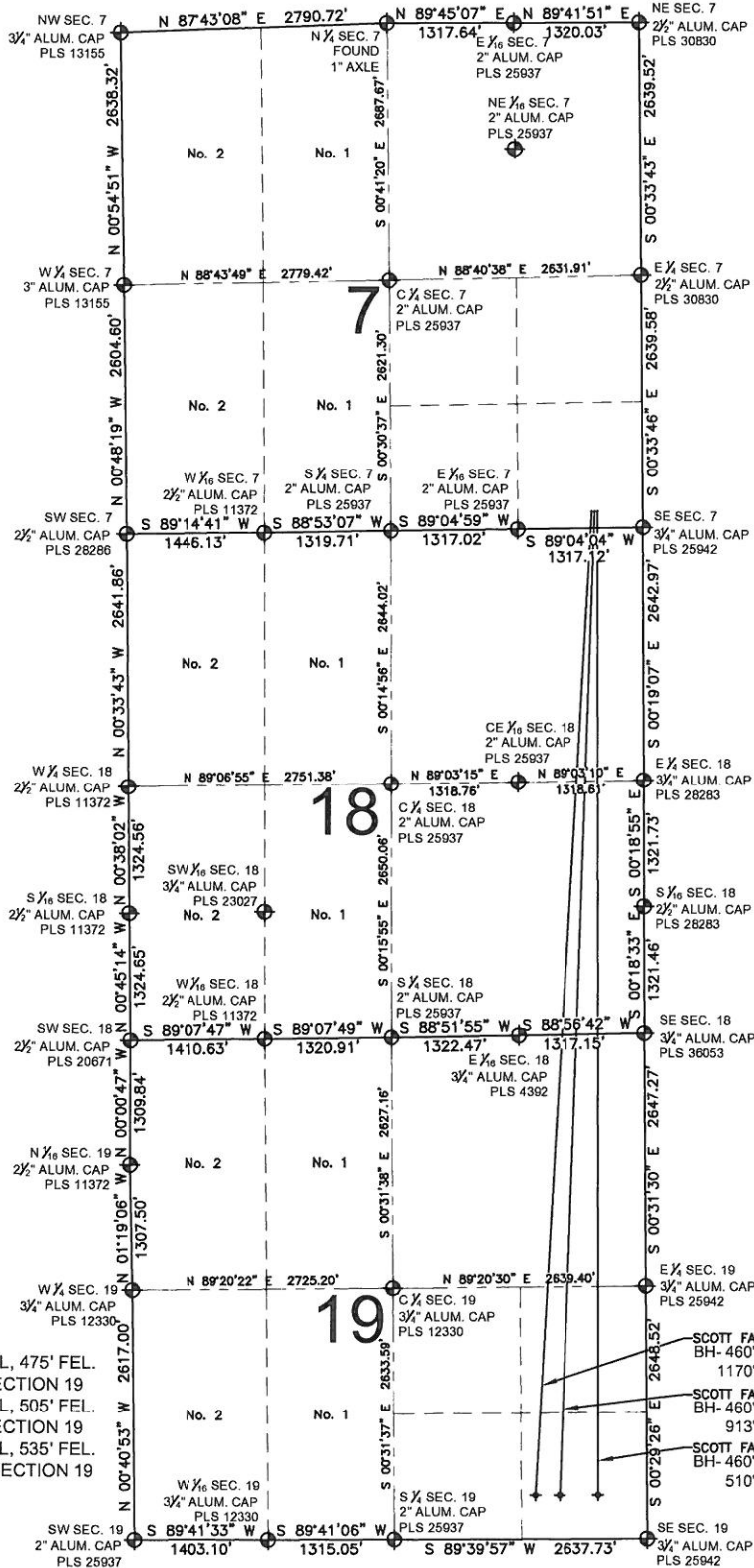


# SCOTT FARM 16C-19HZ MULTI-WELL PLAN

SECTION 7, TOWNSHIP 1 NORTH, RANGE 66 WEST, 6TH P.M.



## LEGEND

- ◆ = EXISTING MONUMENT
- = PROPOSED WELL
- ◆ = BOTTOM HOLE
- ◆ = EXISTING WELL
- BH= BOTTOM HOLE

## NOTES:

SCOTT FARM 16N-19HZ TO BE AT 175' FSL, 475' FEL.  
BOTTOM HOLE AT 460' FSL & 510' FEL. SECTION 19  
SCOTT FARM 16C-19HZ TO BE AT 175' FSL, 505' FEL.  
BOTTOM HOLE AT 460' FSL & 913' FEL. SECTION 19  
SCOTT FARM 37N-19HZ TO BE AT 175' FSL, 535' FEL.  
BOTTOM HOLE AT 460' FSL & 1170' FEL. SECTION 19

PREPARED BY:

**PFS** llc

Petroleum Field Services, LLC  
1801 W. 13th Ave.  
Denver, CO 80204

KERR-MCGEE OIL & GAS ONSHORE LP

FIELD DATE:  
06-21-13

DRAWING DATE:  
06-23-13

SURFACE LOCATION:

SE 1/4 SE 1/4, SEC. 7, T1N, R66W, 6TH P.M.  
WELD COUNTY, COLORADO