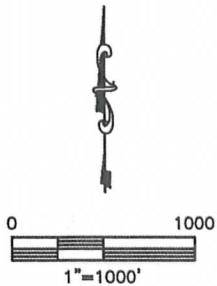
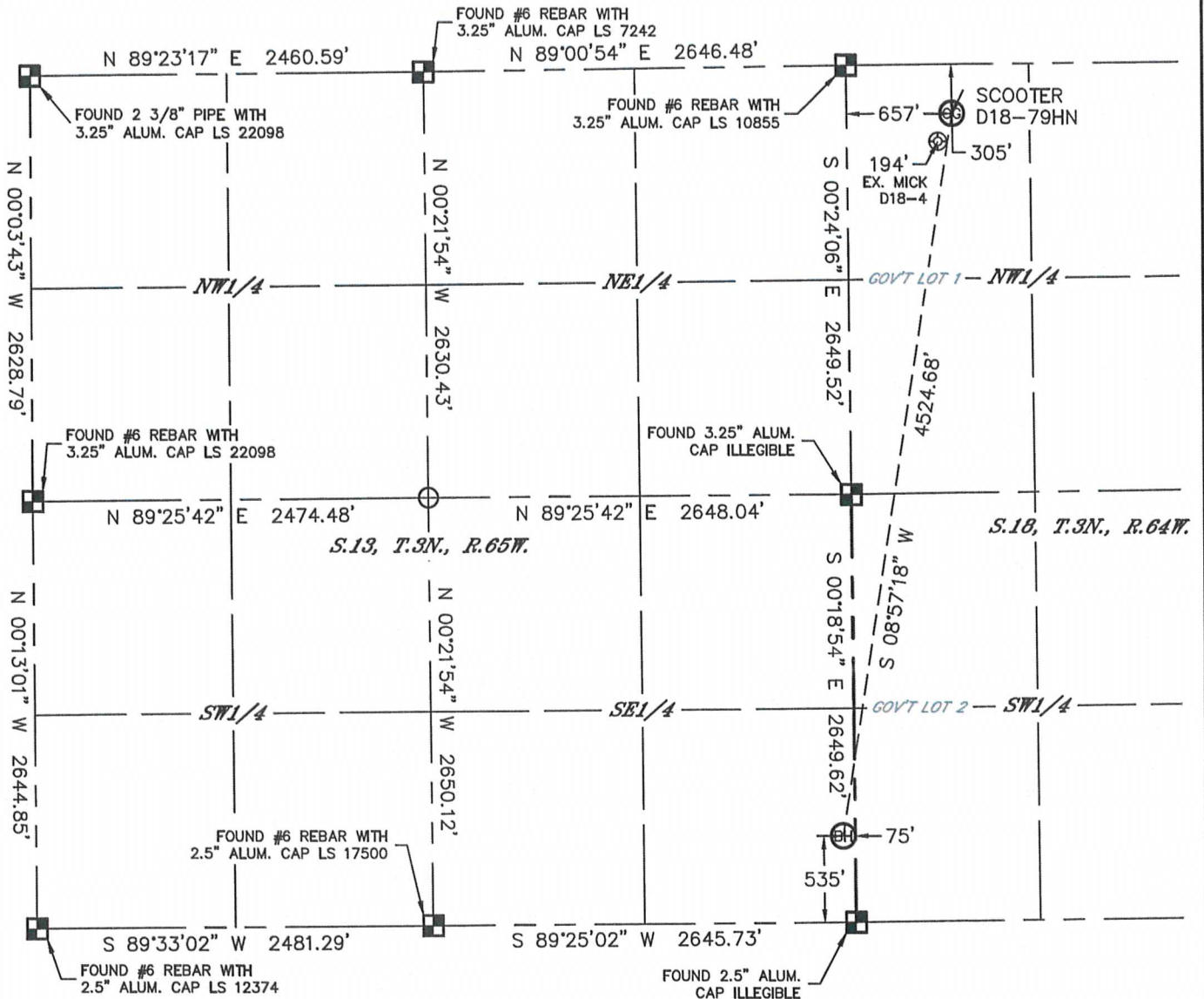




# WELL LOCATION CERTIFICATE

THIS MAP DOES NOT REPRESENT A BOUNDARY SURVEY

SECTION: 18  
TOWNSHIP: 3N  
RANGE: 64W



## NOTE

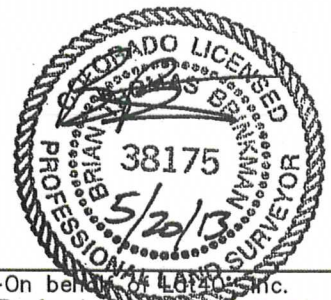
According to Colorado law, you must commence any legal action based upon any defect in this W.L.C. within three years after you discover such defect. In no event, may any action based upon any defect in this survey be commenced more than ten years after the date of the certificate shown hereon. (13-80-105 C.R.S.)

## LEGEND

- = ALIQUOT MONUMENT AS DESCRIBED
- = CALCULATED POSITION

## SHEET 2 OF 2

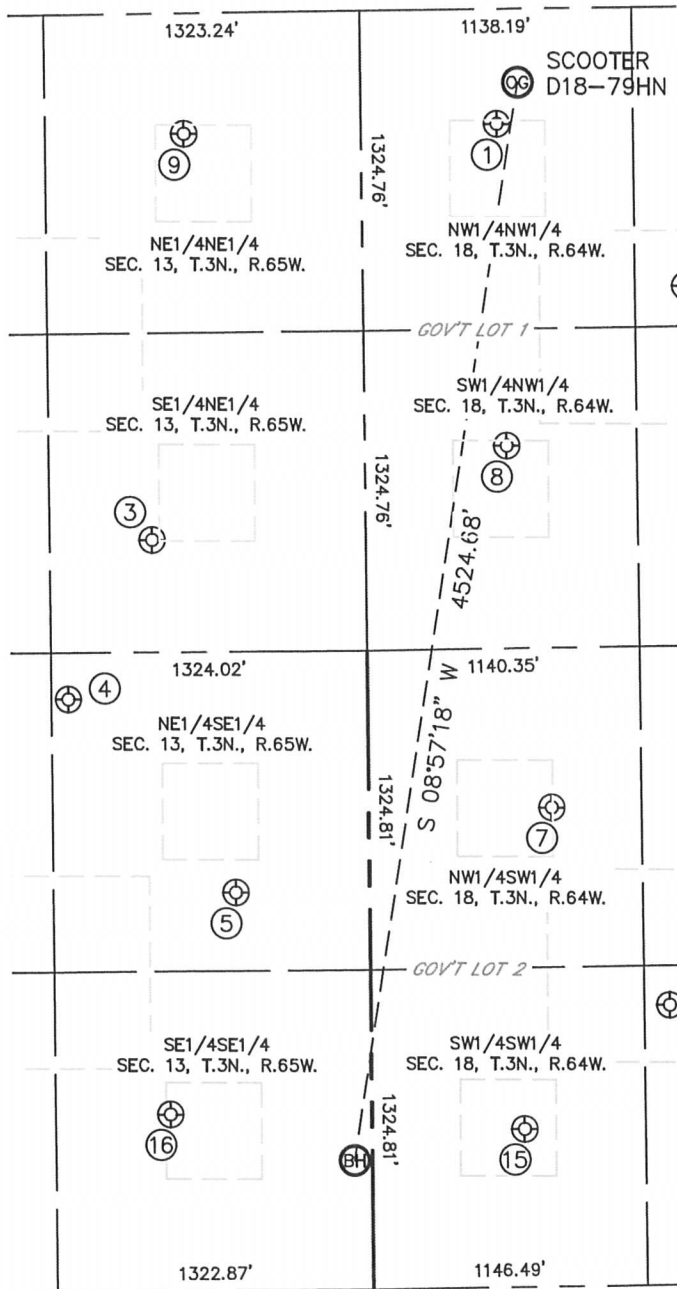
Brian T. Brinkman—On behalf of Lat40, Inc.  
Colorado Licensed Professional Land Surveyor No. 38175  
DATE: 5/20/2013  
PROJECT#: 2013062



# SITE SKETCH

## SCOOTER D18-79HN

SECTION: 18  
TOWNSHIP: 3N  
RANGE: 64W



①  
MICK D18-4  
NW1/4NW1/4  
476' FNL  
568' FWL  
LAT-40.23119°N  
LONG-104.60057°W  
PDOP: 1.6  
ELEV: 4813'

③  
DILLER 42-13  
SE1/4NE1/4  
2177' FNL  
896' FEL  
LAT-40.22650°N  
LONG-104.60583°W  
PDOP: 2.0  
ELEV: 4828'

④  
FRIDGE USX H13-22  
NE1/4SE1/4  
2457' FSL  
1253' FEL  
LAT-40.22469°N  
LONG-104.60711°W  
PDOP: 1.7  
ELEV: 4836'

⑤  
UPRC 13-9J5  
NE1/4SE1/4  
1649' FSL  
561' FEL  
LAT-40.22247°N  
LONG-104.60465°W  
PDOP: 1.6  
ELEV: 4816'

⑦  
MICK D18-12  
NW1/4SW1/4  
1987' FSL  
766' FWL  
LAT-40.22342°N  
LONG-104.59989°W  
PDOP: 2.0  
ELEV: 4808'

⑧  
MICK D18-5  
SW1/4NW1/4  
1809' FNL  
595' FWL  
LAT-40.22753°N  
LONG-104.60049°W  
PDOP: 2.0  
ELEV: 4811'

⑨  
MILDENVERGER MOORE  
H13-1  
NE1/4NE1/4  
499' FNL  
743' FEL  
LAT-40.23111°N  
LONG-104.60526°W  
PDOP: 2.0  
ELEV: 4836'

⑮  
MICK D18-13  
SW1/4SW1/4  
655' FSL  
639' FWL  
LAT-40.21976°N  
LONG-104.60037°W  
PDOP: 2.0  
ELEV: 4802'

⑯  
UPRC 13-16J  
SE1/4SE1/4  
732' FSL  
843' FEL  
LAT-40.21996°N  
LONG-104.60568°W  
PDOP: 1.4  
ELEV: 4825'

