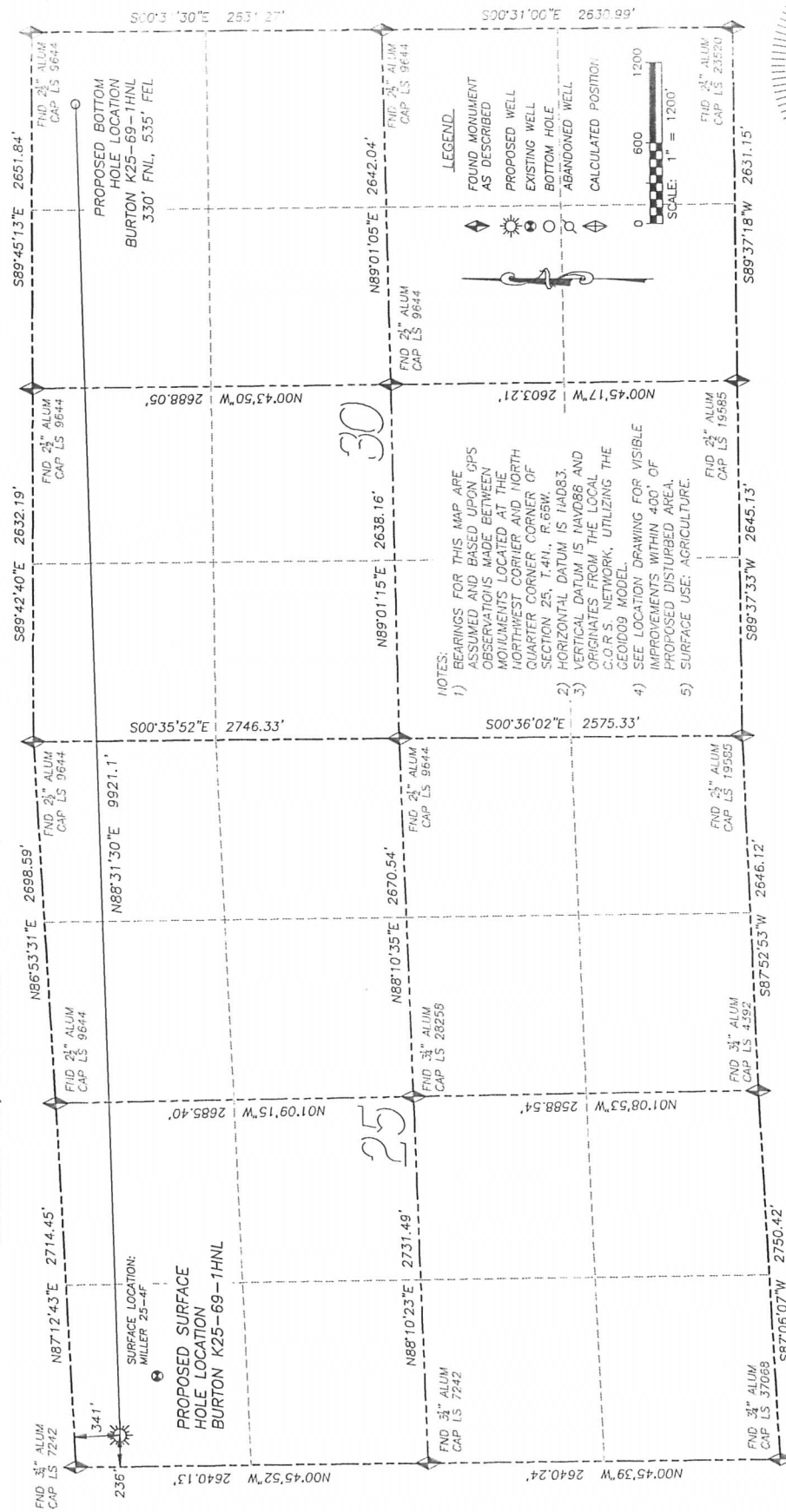


DALEY LAND SURVEYING, INC. PARKER, CO. 80134 303 953 9841  
**WELL LOCATION CERTIFICATE - BURTON K25-69-1HNL**  
 SECTION 25, TOWNSHIP 4 NORTH, RANGE 66 WEST OF THE 6TH PRINCIPAL MERIDIAN



**NAD 83 LATITUDE AND LONGITUDE**

**BURTON K25-69-1HNL**  
 SURFACE HOLE:  
 LATITUDE: N40.28928°  
 LONGITUDE: W104.73407°  
 ELEVATION: 4752'  
 FOOTAGE: 341' FNL, 236' FWL  
 POOP: 1.8  
 QTR/QTR: NW4/NW4 SEC 25  
 PROP LINE: 236' ± WEST

**NEAREST EXISTING WELL:**  
 MILLER 25-4F SURFACE HOLE  
 LATITUDE: N40.28848°  
 LONGITUDE: W104.73249°  
 ELEVATION: 4760'  
 529' SOUTHEAST

**BOTTOM HOLE:**  
 LATITUDE: N40.28974°  
 LONGITUDE: W104.69853°  
 FOOTAGE: 330' FNL, 535' FEL  
 OF SEC. 30 T4N R65W

IN ACCORDANCE WITH A REQUEST FROM BRIAN DEPOSE OF NOBLE ENERGY INC., DALEY LAND SURVEYING, INC. HAS DETERMINED THE SURFACE LOCATION OF THE BURTON K25-69-1HNL WELL TO BE 341' FNL, 236' FWL, AS MEASURED AT NINETY (90) DEGREES FROM THE SECTION LINES OF SECTION 25, TOWNSHIP 4 NORTH, RANGE 66 WEST OF THE 6TH PRINCIPAL MERIDIAN, WELD COUNTY, COLORADO. THE BOTTOM HOLE LOCATION, PROVIDED BY THE CLIENT, IS TO BE 330' FNL, 535' FEL OF SECTION 30, T4N, R.65W.

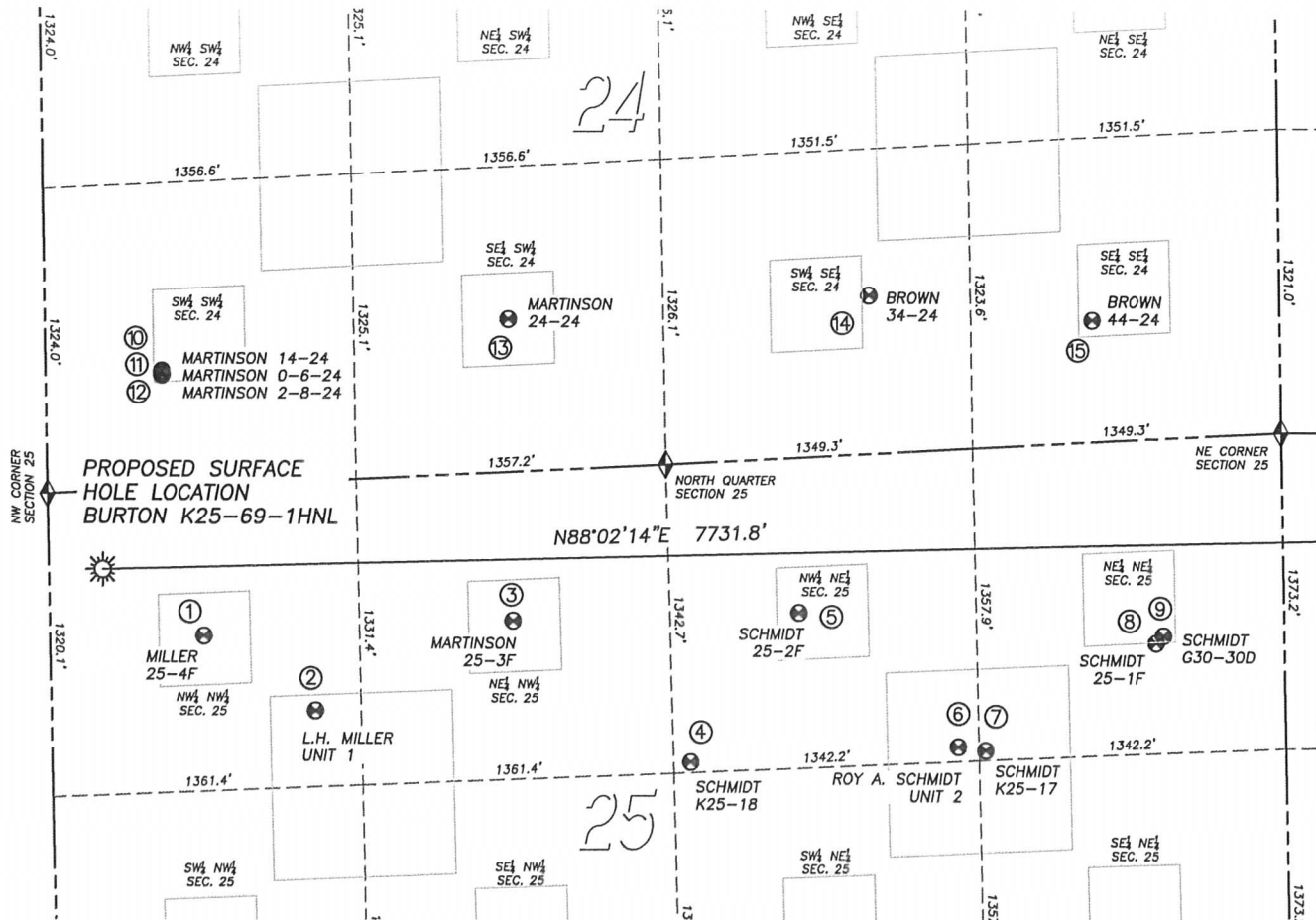
I HEREBY CERTIFY THAT THIS WELL LOCATION CERTIFICATE WAS PREPARED BY ME OR UNDER MY DIRECT SUPERVISION, THAT THE WORK WAS COMPLETED ON 3/27/2012 FOR AND ON BEHALF OF NOBLE ENERGY, INC., AND THAT THIS MAP DOES NOT REPRESENT A BOUNDARY SURVEY, IT IS NOT A LAND SURVEY PLAT OR AN IMPROVEMENT SURVEY PLAT AND IT IS NOT TO BE RELIED UPON FOR THE ESTABLISHMENT OF FENCE, BUILDING OR OTHER FUTURE IMPROVEMENT LINES.



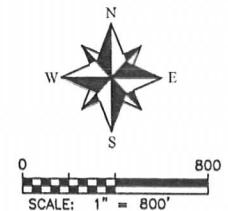
NOTICE: According to Colorado law you MUST commence any legal action based upon any defect in this W.L.C. within three years after you first discover such defect. In no event may any action based upon any such defect in this W.L.C. be commenced more than ten years from the date of the certification shown herein.

## SITE SKETCH BURTON K25-69-1HNL

SECTION 25, TOWNSHIP 4 NORTH, RANGE 66 WEST OF THE 6TH PRINCIPAL MERIDIAN



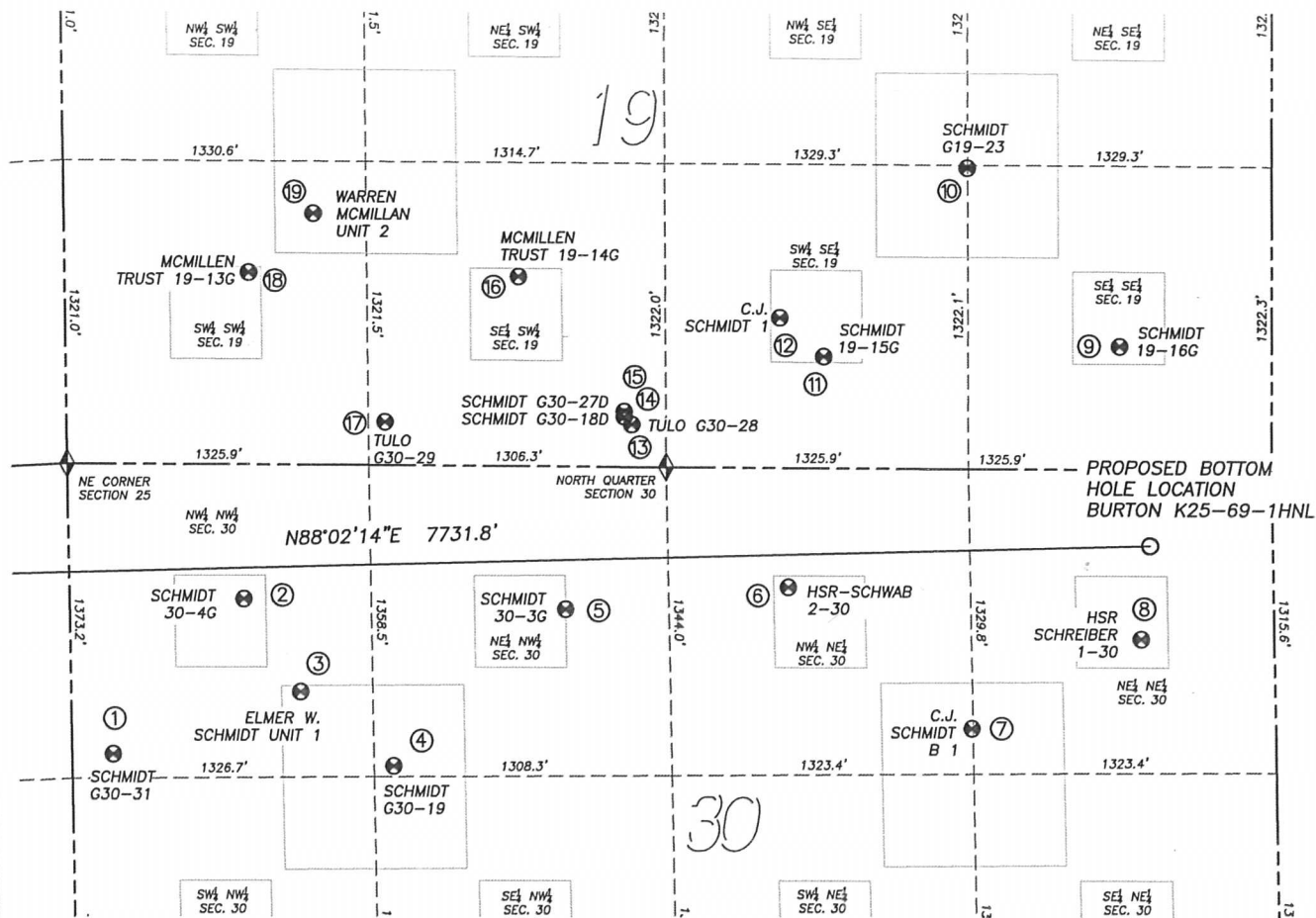
	Well Name	Qtr - Qtr	Footage		Latitude	Longitude	Elevation	PDOP
1	MILLER 25-4F	NW NW 25	649' FNL	676' FWL	40.28848	-104.73249	4760	1.4
2	LH MILLER UNIT 1	NW NW 25	998' FNL	1159' FWL	40.28757	-104.73076	4759	1.4
3	MARTINSON 25-3F	NE NW 25	647' FNL	2031' FWL	40.28863	-104.72764	4762	1.5
4	SCHMIDT K25-18	NW NE 25	1297' FNL	2608' FEL	40.28693	-104.72488	4768	1.2
5	SCHMIDT 25-2F	NW NE 25	673' FNL	2121' FEL	40.28871	-104.72314	4761	1.4
6	ROY A SCHMIDT UNIT 2	NW NE 25	1292' FNL	1432' FEL	40.28709	-104.72067	4768	1.2
7	SCHMIDT K25-17	NE NE 25	1315' FNL	1313' FEL	40.28705	-104.72024	4769	1.2
8	SCHMIDT 25-1F	NE NE 25	886' FNL	557' FEL	40.28832	-104.71754	4771	1.2
9	SCHMIDT G30-30D	NE NE 25	856' FNL	526' FEL	40.28840	-104.71742	4771	1.3
10	MARTINSON 14-24	SW SW 24	511' FSL	510' FWL	40.29165	-104.73310	4743	1.3
11	MARTINSON 0-6-24	SW SW 24	501' FSL	510' FWL	40.29162	-104.73310	4745	1.3
12	MARTINSON 2-8-24	SW SW 24	491' FSL	510' FWL	40.29159	-104.73310	4745	1.3
13	MARTINSON 24-24	SE SW 24	663' FSL	2033' FWL	40.29223	-104.72764	4746	1.3
14	BROWN 34-24	SW SE 24	687' FSL	1793' FEL	40.29248	-104.72197	4752	1.2
15	BROWN 44-24	SE SE S4	528' FSL	815' FEL	40.29217	-104.71846	4763	1.2



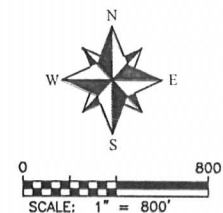
NOTES:  
 1. HORIZONTAL DATUM IS NAD83  
 2. VERTICAL DATUM IS NAVD88  
 AND ORIGINATES FROM THE  
 LOCAL C.O.R.S. NETWORK,  
 UTILIZING THE GEOID09 MODEL.

## SITE SKETCH BURTON K25-69-1HNL

SECTION 25, TOWNSHIP 4 NORTH, RANGE 66 WEST OF THE 6TH PRINCIPAL MERIDIAN



	Well Name	Qtr - Qtr	Footage		Latitude	Longitude	Elevation	PDOP
1	SCHMIDT G30-31	NW NW 30	1265' FNL	180' FWL	40.28734	-104.71489	4781	1.1
2	SCHMIDT 30-4G	NW NW 30	586' FNL	767' FWL	40.28918	-104.71279	4784	1.5
3	ELMER W SCHMIDT UNIT 1	NW NW 30	989' FNL	767' FWL	40.28807	-104.71192	4785	1.5
4	SCHMIDT G30-19	NE NW 30	1311' FNL	1412' FWL	40.28717	-104.71048	4789	1.5
5	SCHMIDT 30-3G	NE NW 30	622' FNL	2178' FWL	40.28903	-104.70773	4786	1.5
6	HSR SCHWAB 2-30	NW NE 30	520' FNL	2124' FEL	40.28928	-104.70422	4791	1.4
7	CJ SCHMIDT B 1	NW NE 30	1131' FNL	1329' FEL	40.28757	-104.70137	4806	1.4
8	HSR SCHREIBER 1-30	NE NE 30	737' FNL	579' FEL	40.28862	-104.69868	4814	1.4
9	SCHMIDT 19-16G	SE SE 19	537' FSL	660' FEL	40.29212	-104.69894	4790	1.3
10	SCHMIDT G19-23	SW SE 19	1310' FSL	1331' FEL	40.29427	-104.70130	4780	1.1
11	SCHMIDT G19-15G	SW SE 19	486' FSL	1960' FEL	40.29203	-104.70360	4782	1.3
12	CJ SCHMIDT 1	SW SE 19	654' FSL	2153' FEL	40.29250	-104.70429	4779	1.2
13	TULO G30-28	SE SW 19	185' FSL	2484' FWL	40.29123	-104.70664	4778	1.2
14	SCHMIDT G30-18D	SE SW 19	218' FSL	2451' FWL	40.29133	-104.70676	4778	1.5
15	SCHMIDT G30-27D	SE SW 19	241' FSL	2451' FWL	40.29139	-104.70676	4778	1.1
16	MCMILLEN TRUST 19-14G	SE SW 19	825' FSL	1994' FWL	40.29301	-104.70839	4772	1.2
17	TULO G30-29	SE SW 19	189' FSL	1400' FWL	40.29129	-104.71053	4773	1.2
18	MCMILLEN TRUST 19-13G	SW SW 19	836' FSL	810' FWL	40.29309	-104.71264	4765	1.3
19	WARREN MCMILLAN UNIT 2	SW SW 19	1094' FSL	1096' FWL	40.29378	-104.71161	4761	1.2



NOTES:  
 1. HORIZONTAL DATUM IS NAD83  
 2. VERTICAL DATUM IS NAVD88 AND  
 ORIGINATES FROM THE  
 LOCAL C.O.R.S. NETWORK,  
 UTILIZING THE GEOID09 MODEL.