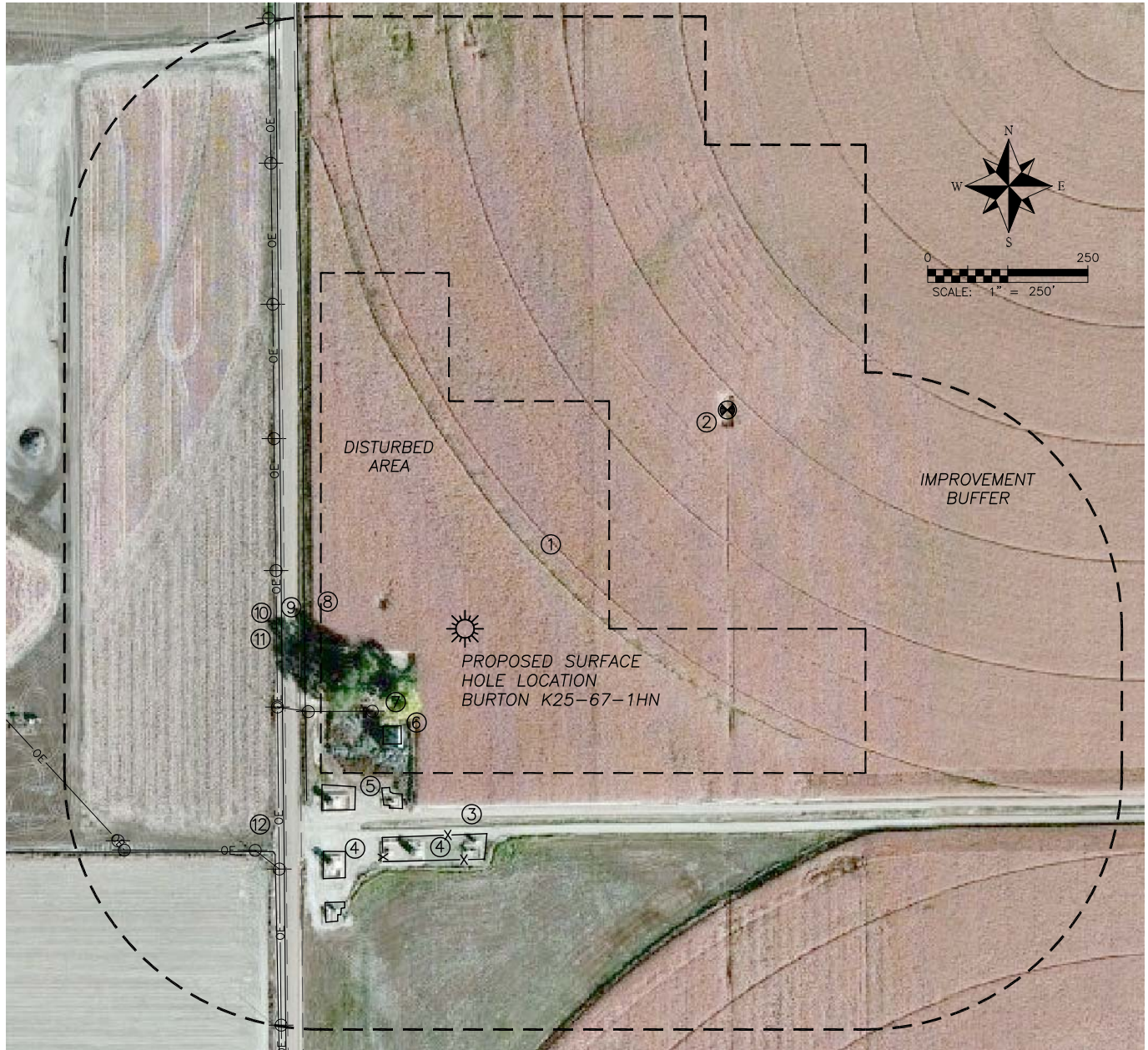


LOCATION DRAWING BURTON K25-67-1HN

SECTION 25, TOWNSHIP 4 NORTH, RANGE 66 WEST OF THE 6TH PRINCIPAL MERIDIAN



IMPROVEMENTS

| | | | |
|--------------------|----------|-------------------|----------|
| 1. PIVOT TRACK: | 195'± NE | 8. IRR. DITCH: | 250'± W |
| 2. OIL-GAS WELL: | 533'± NE | 9. EDGE WCR 35: | 258'± W |
| 3. FIELD ROAD: | 281'± S | 10. IRR. DITCH: | 286'± W |
| | 310'± S | 11. O.H. UTILITY: | 293'± W |
| 4. PROD. FACILITY: | 321'± S | 12. IRR. DITCH: | 458'± SW |
| | 394'± SW | | |
| 5. PROD. FACILITY: | 274'± SW | | |
| 6. FOUNDATION: | 182'± SW | | |
| 7. O.H. UTILITY: | 193'± SW | | |

DISTANCE TO NEAREST:

| | |
|---------------------|-----------|
| BUILDING: | 1780'± SW |
| PUBLIC ROAD: | 258'± W |
| ABOVE GRND UTILITY: | 193'± SW |
| RAILROAD: | 5280'+ |
| PROP. LINE: | 265'± W |