

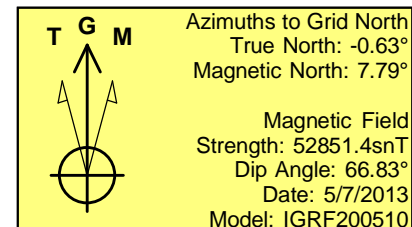
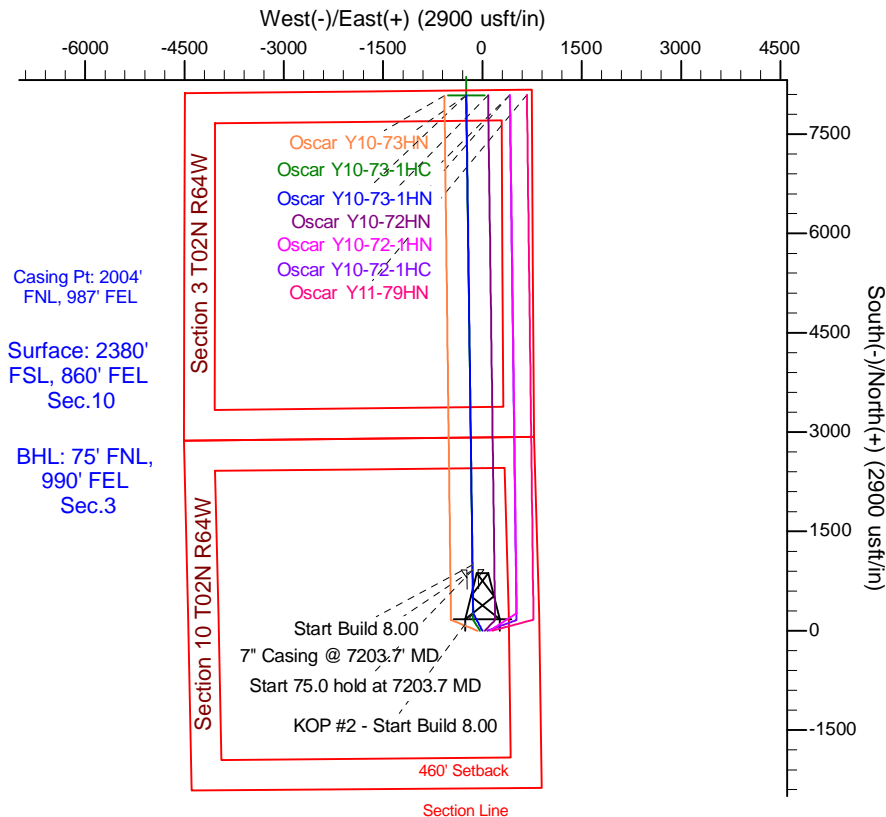
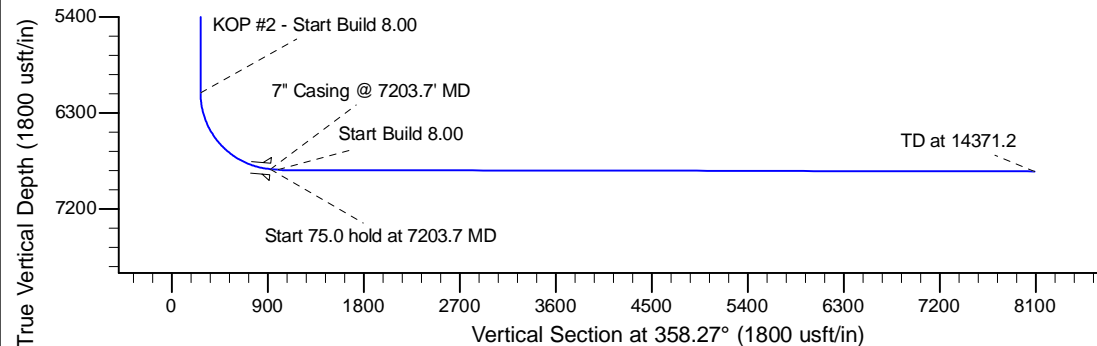
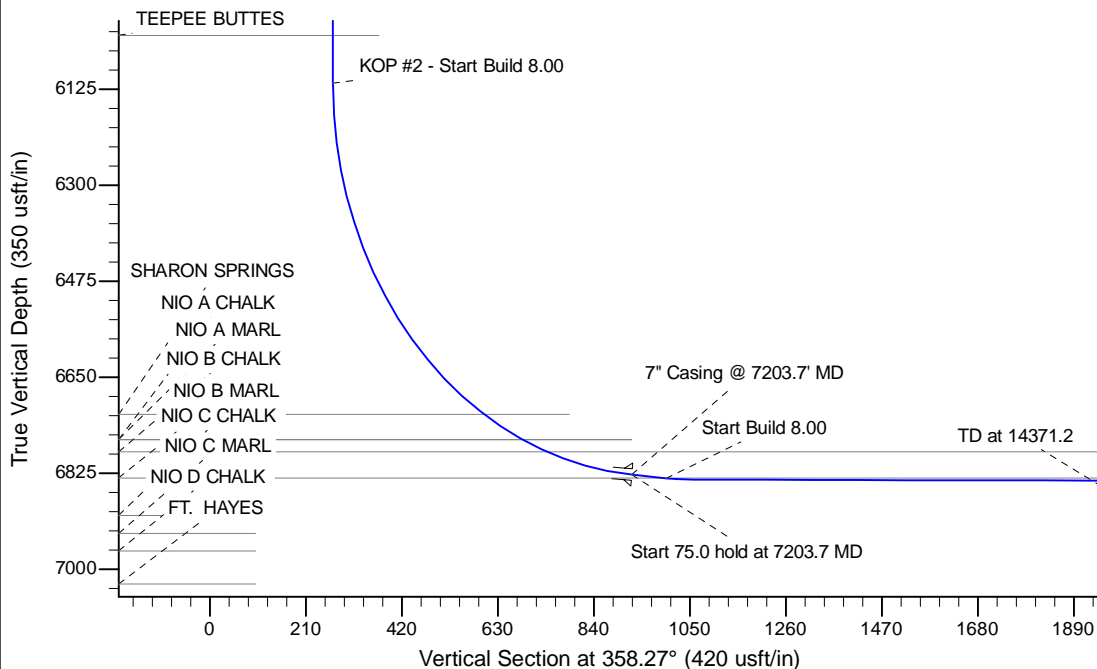
Project: Wattenberg Field
 Site: Y (Sec.10-T02N-R64W) Weld County, CO
 Well: Oscar Y10-73-1HN
 Wellbore: Original Drilling
 Design: APD - Rev 0

Northern Region Drilling

Geodetic System: US State Plane 1983
 Datum: North American Datum 1983
 Ellipsoid: GRS 1980
 Zone: Colorado Northern Zone
 System Datum: Mean Sea Level

SECTION DETAILS

| Sec | MD | Inc | Azi | TVD | +N/-S | +E/-W | Dleg | TFace | VSect | Target |
|-----|---------|-------|--------|--------|--------|--------|------|--------|--------|--------------------------------------|
| 1 | 0.0 | 0.00 | 0.00 | 0.0 | 0.0 | 0.0 | 0.00 | 0.00 | 0.0 | |
| 2 | 1800.0 | 0.00 | 0.00 | 1800.0 | 0.0 | 0.0 | 0.00 | 0.00 | 0.0 | |
| 3 | 2401.6 | 12.03 | 332.15 | 2397.2 | 55.6 | -29.4 | 2.00 | 332.15 | 56.5 | |
| 4 | 3235.6 | 12.03 | 332.15 | 3212.8 | 209.4 | -110.6 | 0.00 | 0.00 | 212.6 | |
| 5 | 3837.1 | 0.00 | 0.00 | 3810.0 | 265.0 | -140.0 | 2.00 | 180.00 | 269.1 | |
| 6 | 6141.2 | 0.00 | 0.00 | 6114.1 | 265.0 | -140.0 | 0.00 | 0.00 | 269.1 | |
| 7 | 7203.7 | 85.00 | 359.23 | 6827.6 | 918.7 | -148.8 | 8.00 | 359.23 | 922.8 | |
| 8 | 7278.7 | 85.00 | 359.23 | 6834.1 | 993.4 | -149.8 | 0.00 | 0.00 | 997.5 | |
| 9 | 7340.0 | 89.90 | 359.23 | 6836.8 | 1054.6 | -150.6 | 8.00 | 0.00 | 1058.7 | |
| 10 | 14371.2 | 89.90 | 359.23 | 6849.1 | 8085.2 | -244.8 | 0.00 | 0.00 | 8088.9 | Oscar Y10-73-1HN BHL 75'FNL, 990'FEL |



| WELL DETAILS: Oscar Y10-73-1HN | | | | | |
|--------------------------------|-----|------------|------------|-----------|-------------|
| Ground Level: 4928.0 | | | | | |
| 0.0 | 0.0 | 1299776.44 | 3270807.19 | 40.152220 | -104.531180 |

| | |
|--|--------------------------|
| Plan: APD - Rev 0 (Oscar Y10-73-1HN/Original Drilling) | |
| Created By: Shailey Jewell | Date: 12:55, May 07 2013 |

OK to submit with 2A as per Noble Drilling
 5/7/2013 2:07