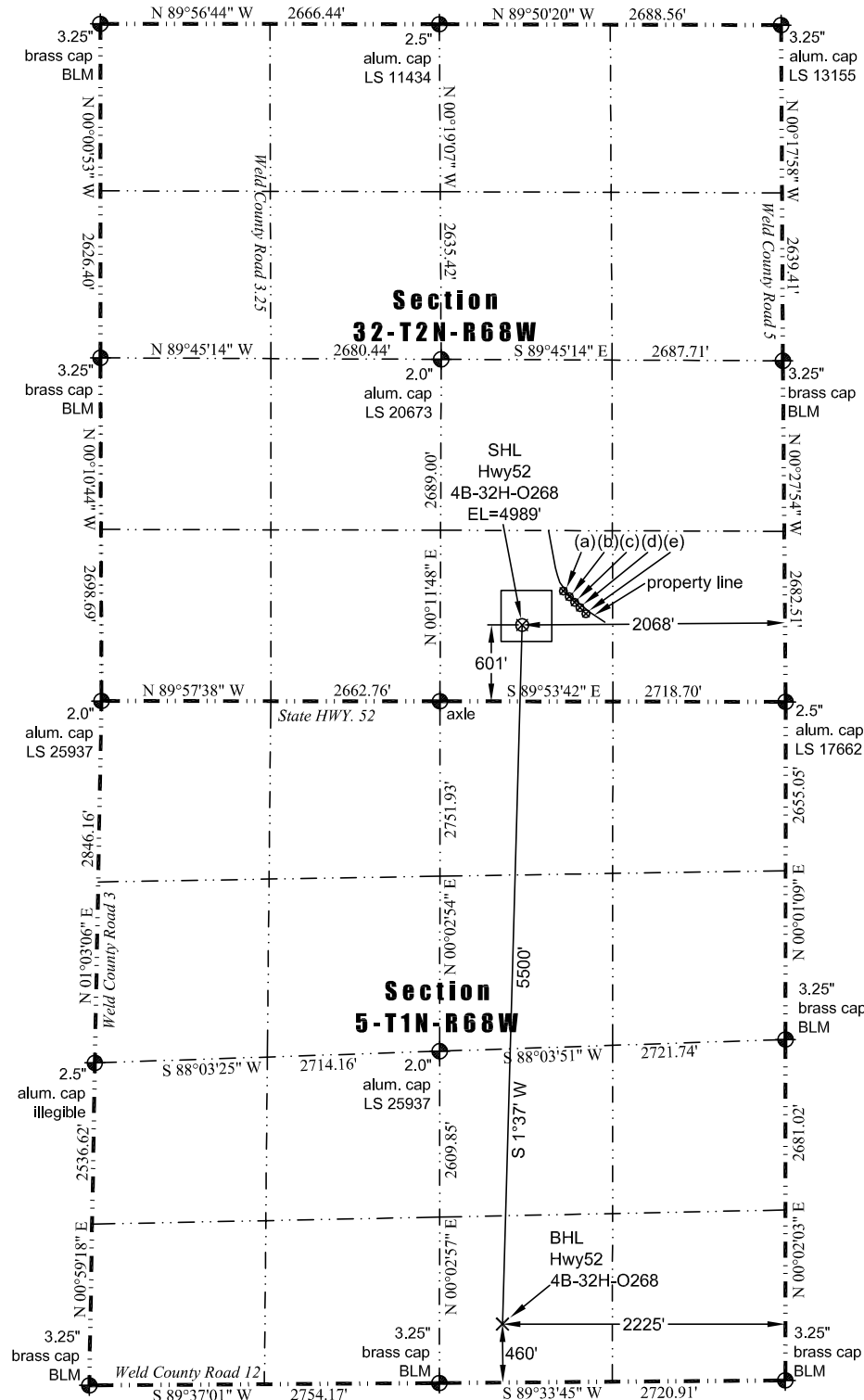


**JR Land Surveying, LLC**

8114 Northstar Drive  
Windsor, Colorado 80528  
P. 970-576-4641

**WELL LOCATION CERTIFICATE**

*THIS MAP DOES NOT REPRESENT A BOUNDARY SURVEY*



In accordance with a request from Jay Knutson of EnCana Oil & Gas (USA) Inc., JR Land Surveying, LLC has determined the location of the **Hwy52 4B-32H-O268** well site to be SHL: 601' FSL and 2068' FEL, (BHL: 460' FSL and 2225' FEL), as measured at ninety (90) degrees from the section lines of Section 32, Township 2 North, and Section 5, Township 1 North, Range 68 West of the 6th Principal Meridian, Weld County Colorado.

- (a) Existing Well Data:  
Ray Nelson 33-32  
Latitude: N 40.08997°  
Longitude: W 105.02376°  
FSL: 823'  
FEL: 1696'  
ELEV: 4980'  
PDOP: 2.0
- (b) Existing Well Data:  
Ray Nelson 34-32  
Latitude: N 40.08995°  
Longitude: W 105.02374°  
FSL: 816'  
FEL: 1689'  
ELEV: 4980'  
PDOP: 2.0
- (c) Existing Well Data:  
Ray Nelson 44-32  
Latitude: N 40.08993°  
Longitude: W 105.02371°  
FSL: 808'  
FEL: 1682'  
ELEV: 4980'  
PDOP: 2.0
- (d) Existing Well Data:  
Brown 41-5  
Latitude: N 40.08990°  
Longitude: W 105.02369°  
FSL: 800'  
FEL: 1676'  
ELEV: 4980'  
PDOP: 2.1
- (e) Existing Well Data:  
Ray Nelson 8-8-32  
Latitude: N 40.08988°  
Longitude: W 105.02366°  
FSL: 793'  
FEL: 1669'  
ELEV: 4980'  
PDOP: 2.0

**Nearest:**

Building: 616' southwest  
Above Ground Utility: 620' south  
Public Road: 660' south  
Railroad: 8,793' southeast  
Property Line: 435' northeast  
Well Window: SHL is 129' inside  
Existing Well: Ray Nelson 33-32,  
432' northeast

**Proposed Surface Hole Data:**

Latitude: N 40.08936° (BHL: 40.07427°)  
Longitude: W 105.02509° (BHL: 105.02574°)  
PDOP: 1.9

**Notes:**

- 1) Bearings and distances based on NAD 83 Colorado North State Plane Coordinate, using RTK GPS observations taken 5/22/13 by operator John Rice
- 2) Conversion factor to ground (1.0002793972).
- 3) Elevations based on NAVD 88 GPS heights and Geoid 2003 corrections.
- 4) See Location Drawing for visible improvements within 500 feet of Pad Site.
- 5) The surface use is a cultivated field.

**NOTICE:** According to Colorado law you must commence any legal action based upon any defect in this W.L.C. within three years after you first discover such defect. In no event may any action based upon any defect in this W.L.C. be commenced more than ten years from this said date of the certification shown hereon.

I hereby certify that this Well Location Certificate was prepared by me or under my direct supervision on 5/22/2013 for and on behalf of EnCana Oil & Gas (USA) Inc. That it is not a Land Survey Plat or an Improvement Survey Plat and that it is not to be relied upon for establishment of fences, buildings, or other future improvement lines.

John Robert McGhee, L.S.#38219  
Well: Hwy52 4B-32H-O268 WLC