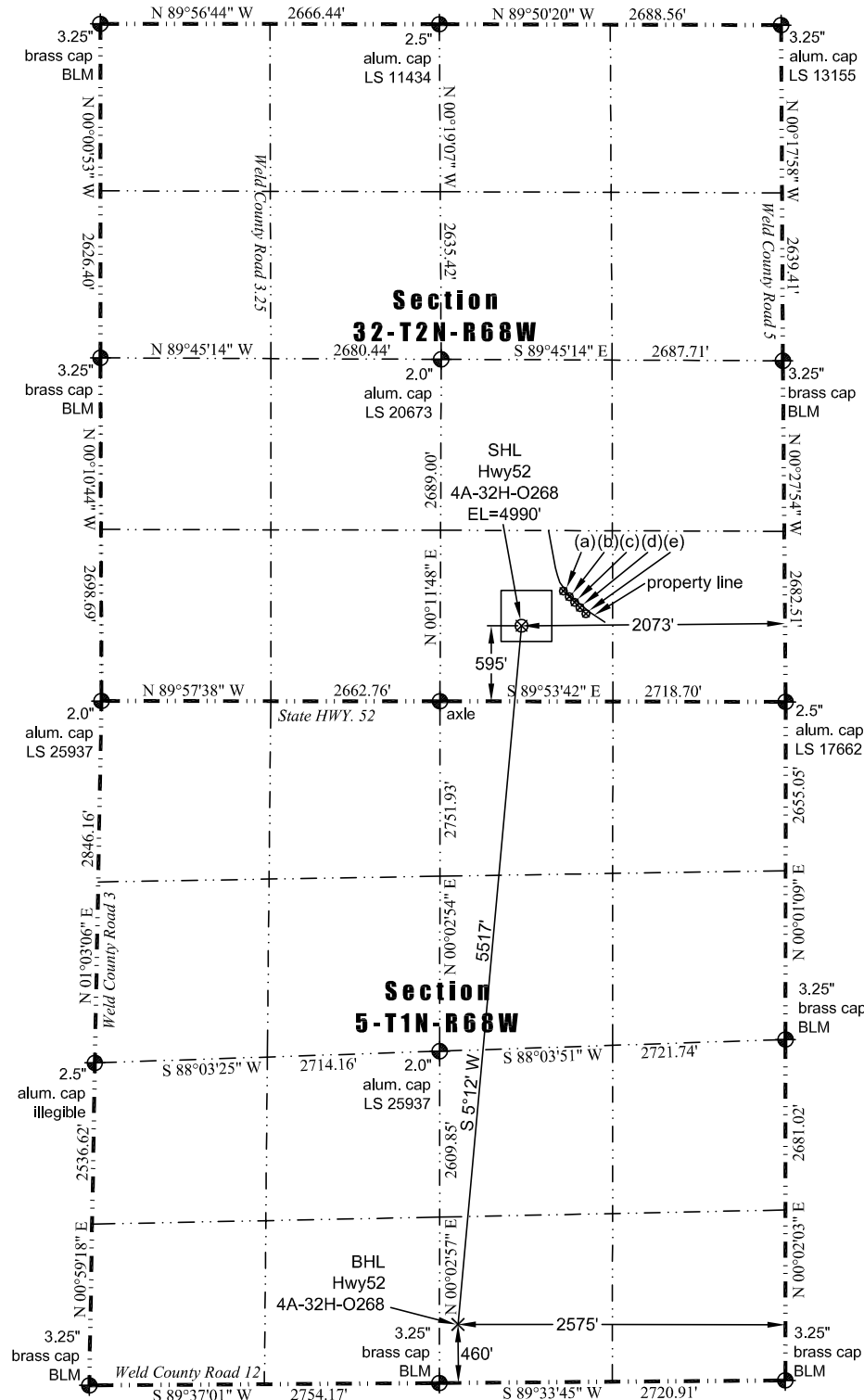


JR Land Surveying, LLC

8114 Northstar Drive
Windsor, Colorado 80528
P. 970-576-4641

WELL LOCATION CERTIFICATE

THIS MAP DOES NOT REPRESENT A BOUNDARY SURVEY



(a) Existing Well Data:
Ray Nelson 33-32
Latitude: N 40.08997°
Longitude: W 105.02376°
FSL: 823'
FEL: 1696'
ELEV: 4980'
PDOP: 2.0

(b) Existing Well Data:
Ray Nelson 34-32
Latitude: N 40.08995°
Longitude: W 105.02374°
FSL: 816'
FEL: 1689'
ELEV: 4980'
PDOP: 2.0

(c) Existing Well Data:
Ray Nelson 44-32
Latitude: N 40.08993°
Longitude: W 105.02371°
FSL: 808'
FEL: 1682'
ELEV: 4980'
PDOP: 2.0

(d) Existing Well Data:
Brown 41-5
Latitude: N 40.08990°
Longitude: W 105.02369°
FSL: 800'
FEL: 1676'
ELEV: 4980'
PDOP: 2.1

(e) Existing Well Data:
Ray Nelson 8-8-32
Latitude: N 40.08988°
Longitude: W 105.02366°
FSL: 793'
FEL: 1669'
ELEV: 4980'
PDOP: 2.0

Nearest:
Building: 609' southwest
Above Ground Utility: 614' south
Public Road: 654' south
Railroad: 8,788' southeast
Property Line: 443' northeast
Well Window: SHL is 123' inside
Existing Well: Ray Nelson 33-32,
439' northeast

Proposed Surface Hole Data:
Latitude: N 40.08935° (BHL: 40.07427°)
Longitude: W 105.02510° (BHL: 105.02699°)
PDOP: 2.0

I hereby certify that this Well Location Certificate was prepared by me or under my direct supervision on 5/22/2013 for and on behalf of EnCana Oil & Gas (USA) Inc. That it is not a Land Survey Plat or an Improvement Survey Plat and that it is not to be relied upon for establishment of fences, buildings, or other future improvement lines.

John Robert McGhee, L.S. 38219
Well: Hwy52 4A-32H-O268 WLC

Notes:

- 1) Bearings and distances based on NAD 83 Colorado North State Plane Coordinate, using RTK GPS observations taken 5/22/13 by operator John Rice
- 2) Conversion factor to ground (1.0002793972).
- 3) Elevations based on NAVD 88 GPS heights and Geoid 2003 corrections.
- 4) See Location Drawing for visible improvements within 500 feet of Pad Site.
- 5) The surface use is a cultivated field.

NOTICE: According to Colorado law you must commence any legal action based upon any defect in this W.L.C. within three years after you first discover such defect. In no event may any action based upon any defect in this W.L.C. be commenced more than ten years from this said date of the certification shown hereon.