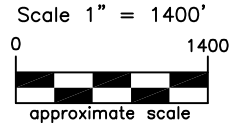
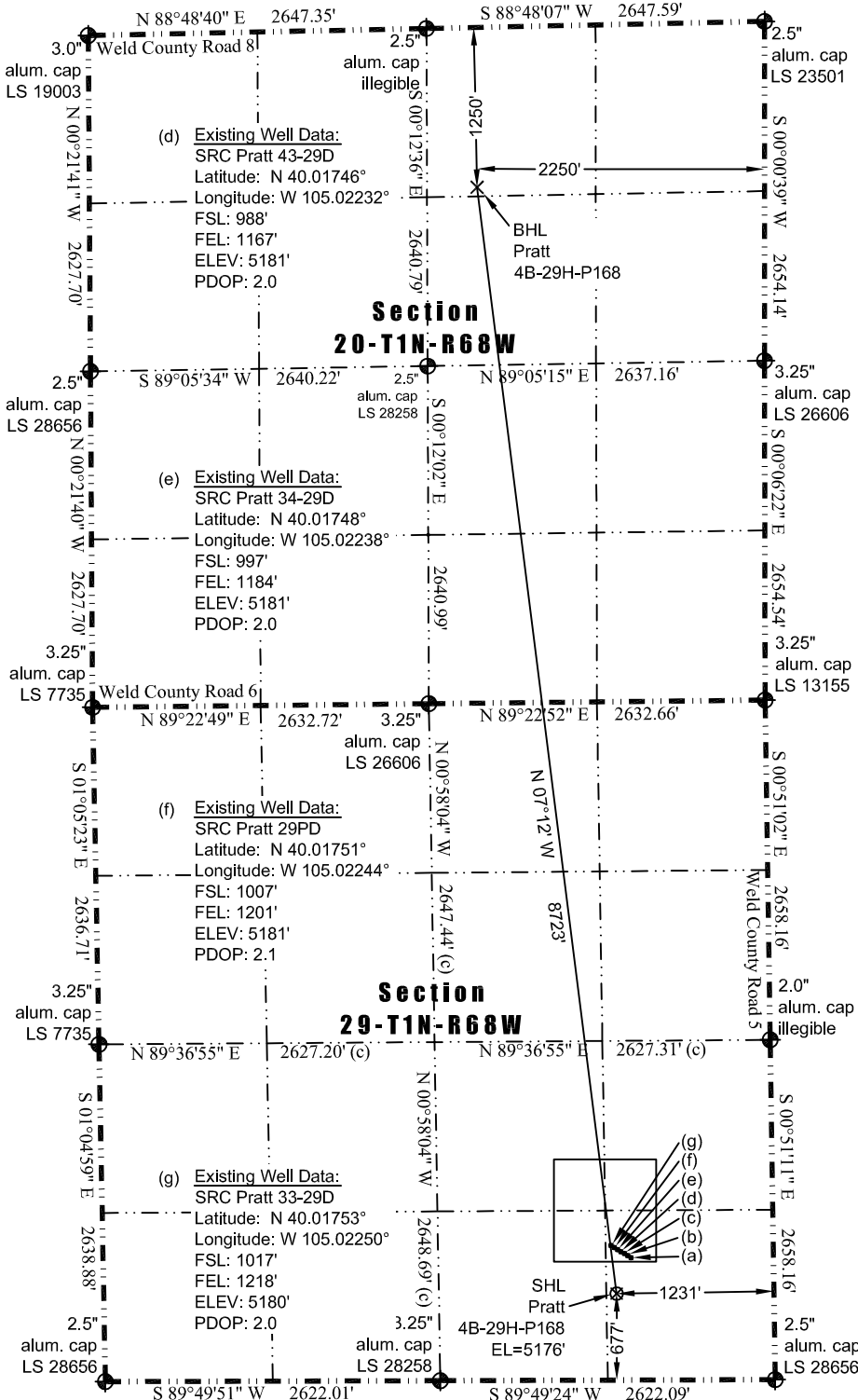


# JR Land Surveying, LLC

8114 Northstar Drive  
Windsor, Colorado 80528  
P. 970-576-4641

## WELL LOCATION CERTIFICATE

THIS MAP DOES NOT REPRESENT A BOUNDARY SURVEY



### LEGEND

- found survey monument
- (C) - calculated dimension

(a) Existing Well Data:  
SRC Pratt 29TD  
Latitude: N 40.01737°  
Longitude: W 105.02213°  
FSL: 957'  
FEL: 1116'  
ELEV: 5181'  
PDOP: 2.0

(b) Existing Well Data:  
SRC Pratt 29XD  
Latitude: N 40.01740°  
Longitude: W 105.02220°  
FSL: 969'  
FEL: 1134'  
ELEV: 5181'  
PDOP: 2.0

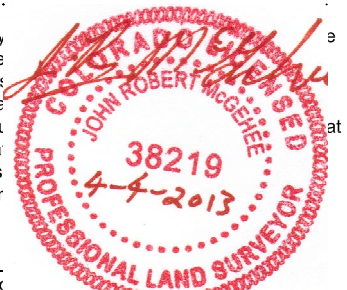
(c) Existing Well Data:  
Pratt 29-3  
Latitude: N 40.01743°  
Longitude: W 105.02227°  
FSL: 980'  
FEL: 1155'  
ELEV: 5180'  
PDOP: 2.0

Nearest:  
Building: 775' south  
Above Ground Utility: 4,652' north  
Public Road: 1,221' east  
Railroad: 11,768' northwest  
Property Line: 677' south  
Well Window: SHL is 249' outside  
Existing Well: SRC Pratt 29TD,  
302' northeast

### Proposed Surface Hole Data:

Latitude: N 40.01660° (BHL: 40.04037°)  
Longitude: W 105.02253° (BHL: 105.02627°)  
PDOP: 1.9

I hereby  
was pre  
supervi  
EnCana  
Land St  
and tha  
establis  
future ir



John R  
Well: Pratt 29TD-100 WEL

### Notes:

- Bearings and distances based on NAD 83 Colorado North State Plane Coordinate, using RTK GPS observations taken 2/20/13 by operator John Rice.
- Conversion factor to ground (1.0002793972).
- Elevations based on NAVD 88 GPS heights and Geoid 2003 corrections.
- See Location Drawing for visible improvements within 500 feet of Pad Site.
- The surface use is an uncultivated field.

NOTICE: According to Colorado law you must commence any legal action based upon any defect in this W.L.C. within three years after you first discover such defect. In no event may any action based upon any defect in this W.L.C. be commenced more than ten years from this said date of the certification shown hereon.