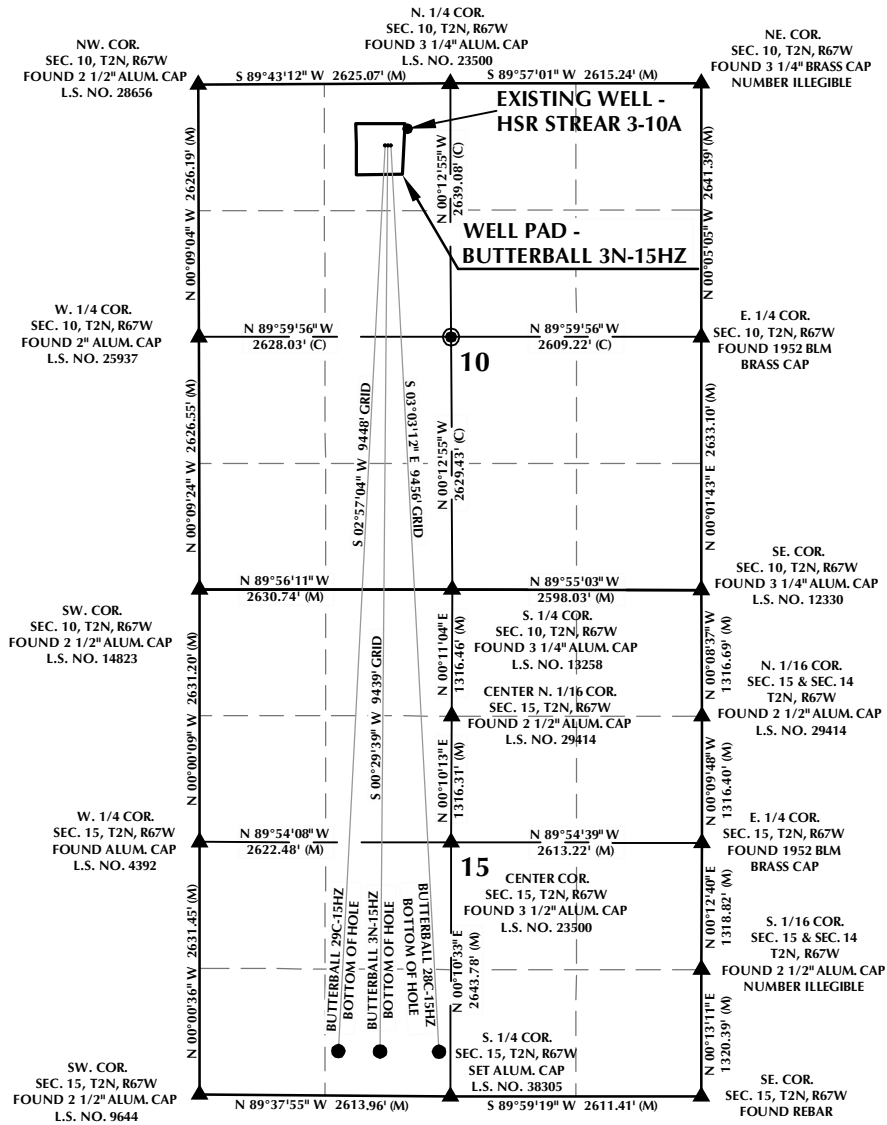


# BUTTERBALL 3N-15HZ T2N, R67W



### WELL NOTES:

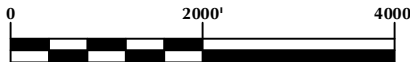
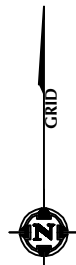
**BUTTERBALL 29C-15HZ**  
 SURFACE: 639' FNL, 1944' FWL  
 BOTTOM HOLE: 460' FSL, 1445' FWL

**BUTTERBALL 3N-15HZ**  
 SURFACE: 639' FNL, 1974' FWL  
 BOTTOM HOLE: 460' FSL, 1880' FWL

**BUTTERBALL 28C-15HZ**  
 SURFACE: 639' FNL, 2004' FWL  
 BOTTOM HOLE: 460' FSL, 2495' FWL

### NOTES:

- ▲ INDICATES FOUND SECTION CORNER
- INDICATES CALCULATED CORNER
- BASIS OF BEARING DERIVED FROM COLORADO COORDINATE SYSTEM 1983 NORTH ZONE UNLESS OTHERWISE NOTED.
- ALL MEASURED DISTANCES ARE GRID.
- COMBINED SCALE FACTOR: .99972297
- WELL FOOTAGES ARE MEASURED AT RIGHT ANGLES TO THE SECTION LINES.



SCALE: 1" = 2000'

## WELL PAD - BUTTERBALL 3N-15HZ

INTERFERENCE DIAGRAM  
 BUTTERBALL 29C-15HZ,  
 BUTTERBALL 3N-15HZ & BUTTERBALL 28C-15HZ  
 LOCATED IN SECTIONS 10 & 15  
 T2N, R67W, 6TH P.M.  
 WELD COUNTY, COLORADO

**Kerr-McGee Oil &  
 Gas Onshore L.P.**  
 1099 18th Street  
 Denver, Colorado 80202



## CONSULTING, LLC

**SHERIDAN OFFICE**  
 2155 North Main Street  
 Sheridan, Wyoming 82801  
 Phone 307-674-0609

**LOVELAND OFFICE**  
 1635 Foxtrail Drive, Suite 204  
 Loveland, Colorado 80538  
 Phone 970-776-4331

DRAFTED BY:	APF	CHECKED BY:	BJR
DATE DRAFTED:	5/29/13	DATE SURVEYED:	6/24/13
REVISED:	6/28/13	FILE NAME:	13-47