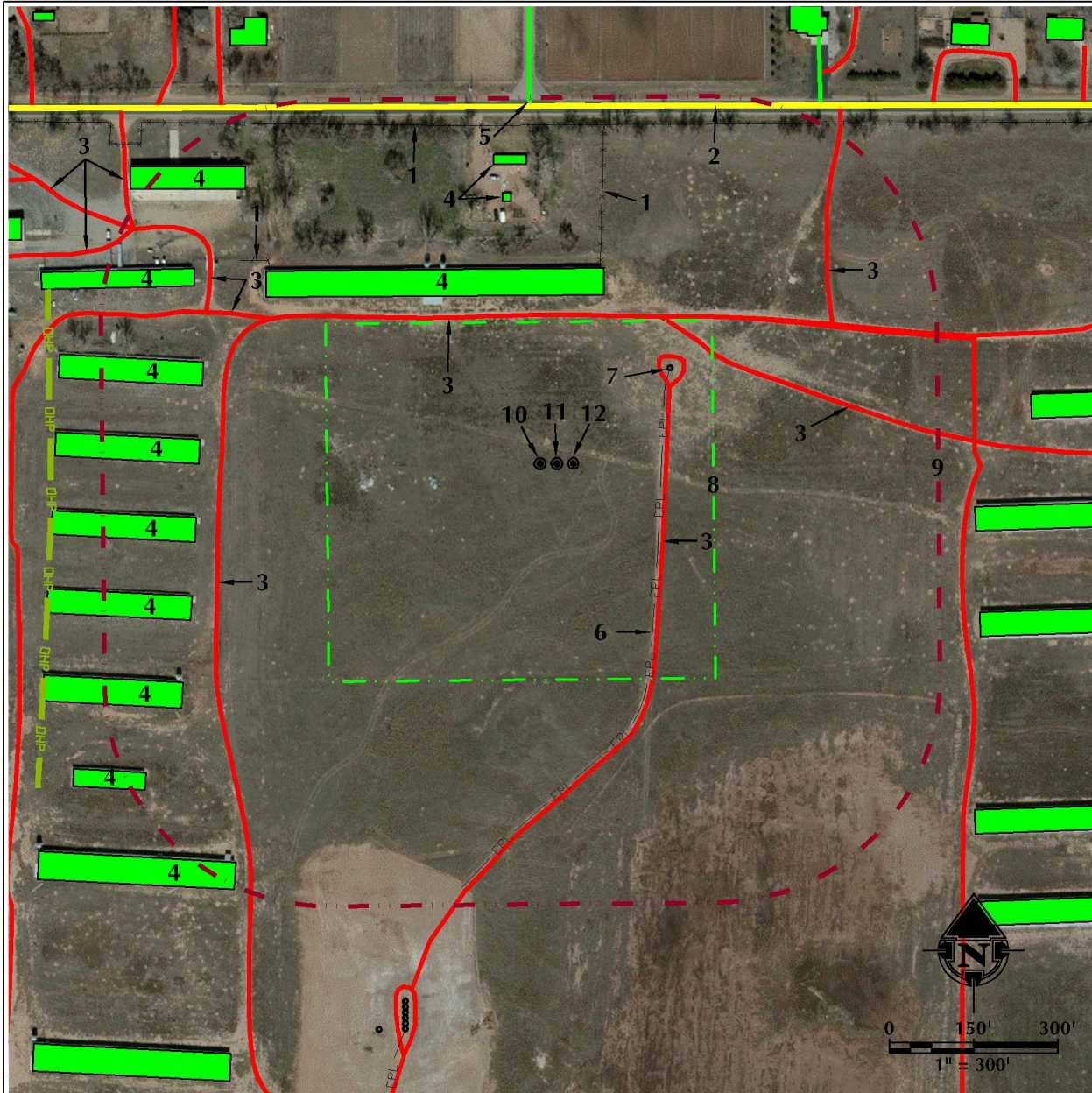


K:\ANADARKO\2013\2013_47_WATTENBERG_T2_867_SEC_10\DWG\001_BUFFER\BUTTERBALL_3N-15HZ.dwg, 6/26/2013 5:55:51 PM, jdk



FEATURE NOTES

1. EXISTING FENCES ARE ±358' N, ±604' N AND ±617' NW.
2. COUNTY ROAD 24 IS ±638' N.
3. EXISTING PRIMITIVE ROADS ARE ±266' N, ±322' NE, ±551' NE, ±196' E, ±597' W, ±571' NW, ±681' NW, ±863' NW, ±864' NW AND ±865' NW.
4. EXISTING BUILDINGS/RESIDENCES ARE ±300' N, ±475' N, ±537' N, ±912' SW, ±916' SW, ±772' SW, ±692' W, ±650' W, ±638' W, ±647' W, ±719' NW AND ±740' NW.
5. EXISTING IMPROVED ROAD IS ±639' N.
6. EXISTING BURIED PIPELINE IS ±188' E.
7. EXISTING WELL: HSR STREAR 3-10A IS ±265' NE.
8. PROPOSED WELL PAD: BUTTERBALL 3N-15HZ
9. WELL PAD 400' BUFFER
10. PROPOSED WELL: BUTTERBALL 29C-15HZ
11. PROPOSED WELL: BUTTERBALL 3N-15HZ
12. PROPOSED WELL: BUTTERBALL 28C-15HZ

LEGEND

- | | | | |
|-----|-----------------------|---------|----------------------|
| ○ | EXISTING WELL | — EPL — | EXISTING PIPELINE |
| ● | PROPOSED WELL | — OHP — | OVERHEAD POWER LINE |
| ⊙ | WATER WELL | — UGP — | BURIED POWER LINE |
| ⊙ | EXISTING FENCE | — UFO — | BURIED FIBER OPTIC |
| — | COUNTY ROAD | — T — | BURIED TELEPHONE |
| — | IMPROVED ROAD | — | DITCH/CANAL/DRAINAGE |
| — | PRIMITIVE ROAD | +++++ | RAILROAD TRACKS |
| --- | 400' BUFFER | ■ | PRODUCTION FACILITY |
| --- | WELL PAD | ■ | BUILDINGS/RESIDENCES |
| --- | PROPOSED FACILITY PAD | ■ | POND |
| | | ■ | WETLANDS |

LOCATION DRAWING - BUTTERBALL 3N-15HZ

WELL PAD - LOCATION DRAWING
 BUTTERBALL 29C-15HZ,
 BUTTERBALL 3N-15HZ &
 BUTTERBALL 28C-15HZ
 LOCATED IN NE1/4 NW1/4
 SECTION 10, T2N, R67W, 6TH P.M.
 WELD COUNTY, COLORADO

**Kerr-McGee Oil &
 Gas Onshore L.P.**
 1099 18th Street
 Denver, Colorado 80202



LOVELAND OFFICE
 1635 Foxtrail Drive, Suite 204
 Loveland, Colorado 80538
 Phone 970-776-4331

SHERIDAN OFFICE
 2155 North Main Street
 Sheridan, Wyoming 82801
 Phone 307-674-0609

DATA SOURCES:
 - AERIAL COURTESY OF ESRI, INC.
 - WATER WELLS COURTESY OF COLORADO
 DIVISION OF WATER RESOURCES

ALL MEASUREMENTS ARE MADE FROM
 REFERENCE WELL:
 BUTTERBALL 3N-15HZ
 LAT: 40.158137° (NAD83)
 LONG: -104.878815° (NAD83)
 EXISTING GROUND ELEVATION= 4934.8'
 WELL FOOTAGES: 639' FNL & 1974' FWL

SURFACE USE: RANGELAND

SCALE: 1" = 300'

DATE SURVEYED: 5/15/13

DATE: 5/29/13
REVISED: 6/28/13