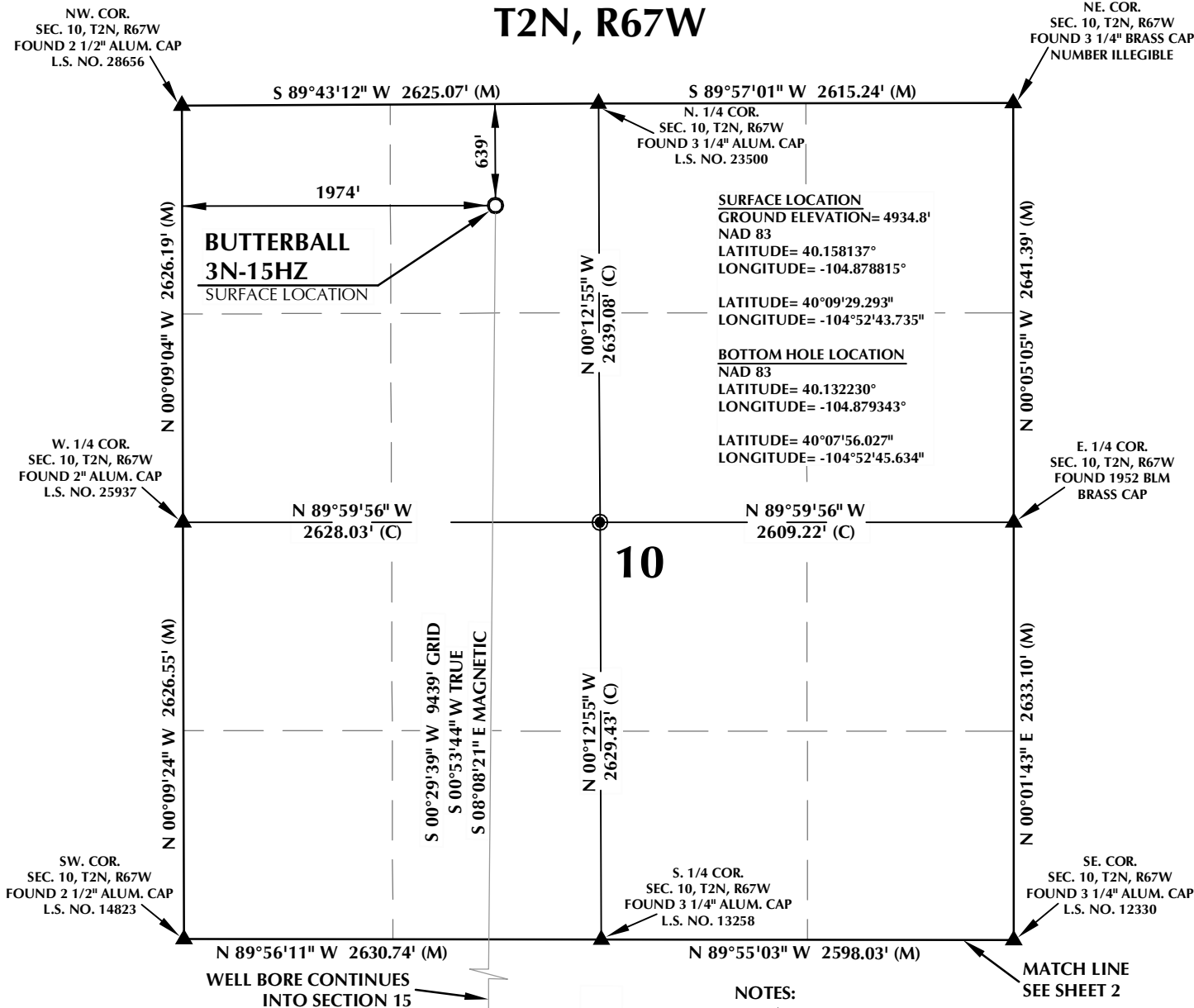


T2N, R67W



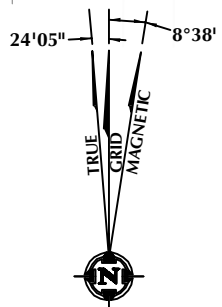
CERTIFICATE OF SURVEYOR:

THIS IS TO CERTIFY THAT THE ABOVE PLAT WAS PREPARED FROM FIELD NOTES OF ACTUAL SURVEY MADE BY ME OR UNDER MY SUPERVISION AND THAT THE SAME ARE TRUE AND CORRECT TO THE BEST OF MY KNOWLEDGE AND BELIEF. THIS CERTIFICATE DOES NOT REPRESENT A LAND SURVEY PLAT OR IMPROVEMENT SURVEY PLAT AS DEFINED BY C.S. 38-51-102 AND CANNOT BE RELIED UPON TO DETERMINE OWNERSHIP.

Benjamin J. Reenders
 BENJAMIN J. REENDERS
 PROFESSIONAL LAND SURVEYOR
 COLORADO REGISTRATION NUMBER 143305

6/28/13

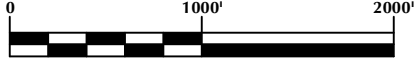
NOTICE: ACCORDING TO COLORADO STATE LAW YOU MUST COMMENCE ANY LEGAL ACTION BASED UPON ANY DEFECT IN THIS SURVEY WITHIN THREE YEARS AFTER YOU FIRST DISCOVER SUCH DEFECT. IN NO EVENT MAY ANY ACTION BASED UPON ANY DEFECT IN THIS SURVEY BE COMMENCED MORE THAN TEN YEARS FROM THE DATE ON THE CERTIFICATION SHOWN HEREON.



NOTE: MAGNETIC NORTH IS CURRENT AS OF 6/25/2013. MAGNETIC NORTH CHANGES WEST 0°08' PER YEAR.

NOTES:

- ▲ INDICATES FOUND SECTION CORNER
- INDICATES CALCULATED CORNER
- ELEVATION BASED ON NAVD88 (GEOID09)
- BASIS OF BEARING DERIVED FROM COLORADO COORDINATE SYSTEM 1983 NORTH ZONE UNLESS OTHERWISE NOTED.
- ALL MEASURED DISTANCES ARE GRID. COMBINED SCALE FACTOR: .99972297
- OPERATOR: ROB WILSON / PDOP = 1.4
- SURFACE USE OF LOCATION IS RANGELAND.
- SEE ADDENDUM TO WELL LOCATION CERTIFICATE FOR EXISTING IMPROVEMENTS WITHIN 400' OF THE WELL PAD.
- WELL FOOTAGES ARE MEASURED AT RIGHT ANGLES TO THE SECTION LINES.
- THE BOTTOM OF HOLE BEARS S00°29'39"W 9439' FROM THE SURFACE LOCATION.



SCALE: 1" = 1000'

WELL PAD - BUTTERBALL 3N-15HZ

BUTTERBALL 3N-15HZ
WELL LOCATION CERTIFICATE
 639' FNL & 1974' FWL NENW (SURFACE)
 LOCATED IN SECTION 10
 460' FSL & 1880' FWL SESW (BOTTOM)
 LOCATED IN SECTION 15
 T2N, R67W, 6TH P.M.
 WELD COUNTY, COLORADO

Kerr-McGee Oil & Gas Onshore L.P.
 1099 18th Street
 Denver, Colorado 80202



CONSULTING, LLC

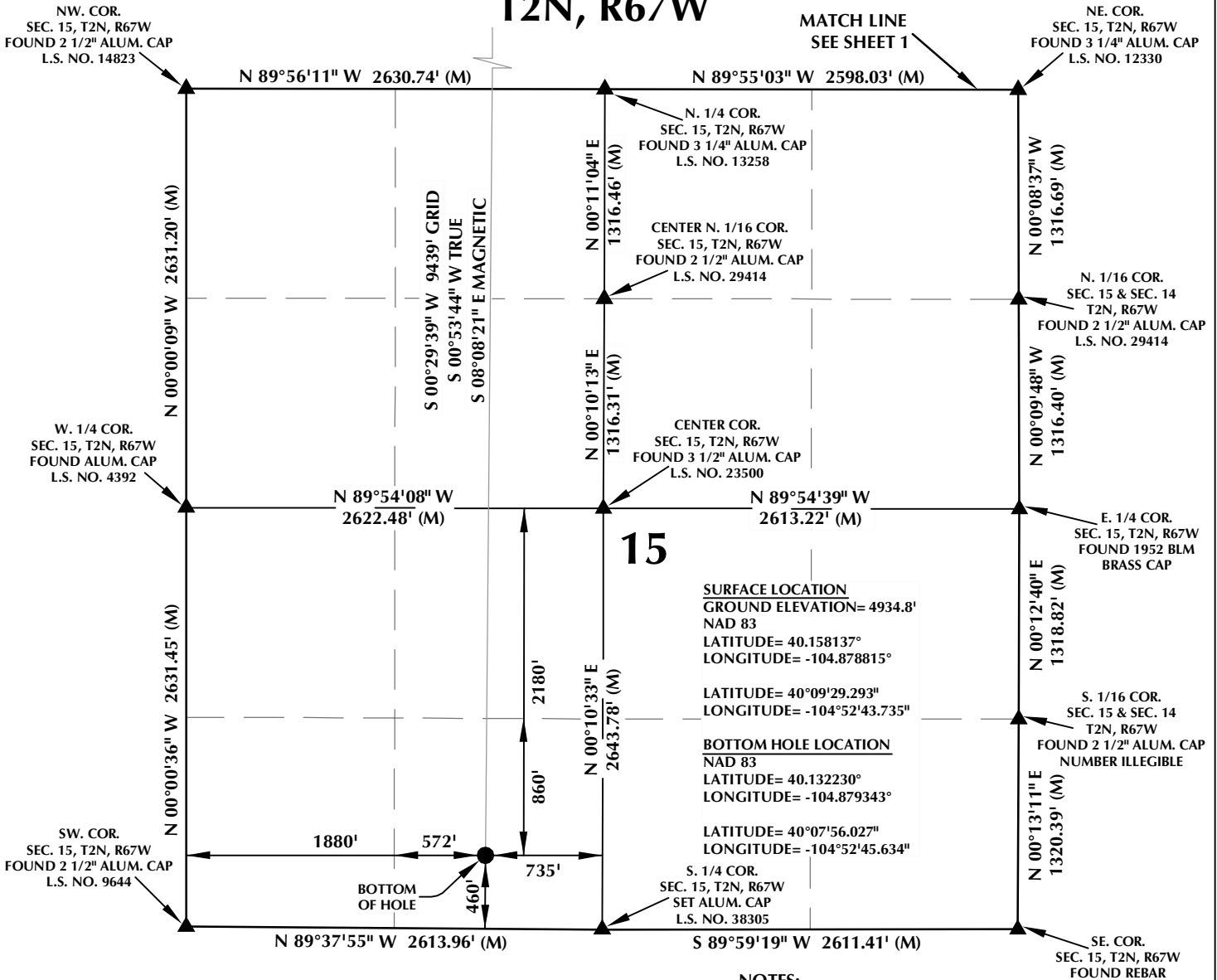
SHERIDAN OFFICE
 2155 North Main Street
 Sheridan, Wyoming 82801
 Phone 307-674-0609

LOVELAND OFFICE
 1635 Foxtrail Drive, Suite 204
 Loveland, Colorado 80538
 Phone 970-776-4331

DRAFTED BY:	APF	CHECKED BY:	BJR	SHEET NO:
DATE DRAFTED:	5/29/13	DATE SURVEYED:	6/24/13	1
REVISED:	6/28/13	FILE NAME:	13-47	1 OF 2

K:\AMADARKO\2013\2013_47_WATTENBERG_T2_R67_SEC_10\PLATS\BUTTERBALL_3N-15HZ_PLATS\BUTTERBALL_3N-15HZ_PLATS.dwg, 6/25/2013 11:25:22 AM, any

T2N, R67W



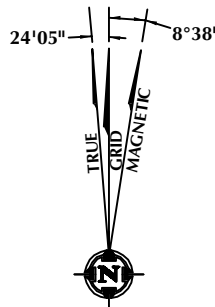
CERTIFICATE OF SURVEYOR:

THIS IS TO CERTIFY THAT THE ABOVE PLAT WAS PREPARED FROM FIELD NOTES OF ACTUAL SURVEY MADE BY ME OR UNDER MY SUPERVISION AND THAT THE SAME ARE TRUE AND CORRECT TO THE BEST OF MY KNOWLEDGE AND BELIEF. THIS CERTIFICATE DOES NOT REPRESENT A LAND SURVEY PLAT OR IMPROVEMENT SURVEY PLAT AS DEFINED BY C.S. 38-51-102 AND CANNOT BE RELIED UPON TO DETERMINE OWNERSHIP.

Benjamin J. Reenders
 BENJAMIN J. REENDERS
 PROFESSIONAL LAND SURVEYOR
 COLORADO REGISTRATION NUMBER 433305

6/28/13

NOTICE: ACCORDING TO COLORADO STATE LAW YOU MUST COMMENCE ANY LEGAL ACTION BASED UPON ANY DEFECT IN THIS SURVEY WITHIN THREE YEARS AFTER YOU FIRST DISCOVER SUCH DEFECT. IN NO EVENT MAY ANY ACTION BASED UPON ANY DEFECT IN THIS SURVEY BE COMMENCED MORE THAN TEN YEARS FROM THE DATE ON THE CERTIFICATION SHOWN HEREON.



NOTE: MAGNETIC NORTH IS CURRENT AS OF 6/25/2013. MAGNETIC NORTH CHANGES WEST 0°08' PER YEAR.

NOTES:

- ▲ INDICATES FOUND SECTION CORNER
- INDICATES CALCULATED CORNER
- ELEVATION BASED ON NAVD88 (GEOID09)
- BASIS OF BEARING DERIVED FROM COLORADO COORDINATE SYSTEM 1983 NORTH ZONE UNLESS OTHERWISE NOTED.
- ALL MEASURED DISTANCES ARE GRID. COMBINED SCALE FACTOR: .99972297
- OPERATOR: ROB WILSON / PDOP = 1.14
- SURFACE USE OF LOCATION IS RANGELAND.
- SEE ADDENDUM TO WELL LOCATION CERTIFICATE FOR EXISTING IMPROVEMENTS WITHIN 400' OF THE WELL PAD.
- WELL FOOTAGES ARE MEASURED AT RIGHT ANGLES TO THE SECTION LINES.
- THE BOTTOM OF HOLE BEARS S00°29'39"W 9439' FROM THE SURFACE LOCATION.



SCALE: 1" = 1000'

WELL PAD - BUTTERBALL 3N-15HZ

BUTTERBALL 3N-15HZ
WELL LOCATION CERTIFICATE
 639' FNL & 1974' FWL NENW (SURFACE)
 LOCATED IN SECTION 10
 460' FSL & 1880' FWL SESW (BOTTOM)
 LOCATED IN SECTION 15
 T2N, R67W, 6TH P.M.
 WELD COUNTY, COLORADO

Kerr-McGee Oil & Gas Onshore L.P.
 1099 18th Street
 Denver, Colorado 80202



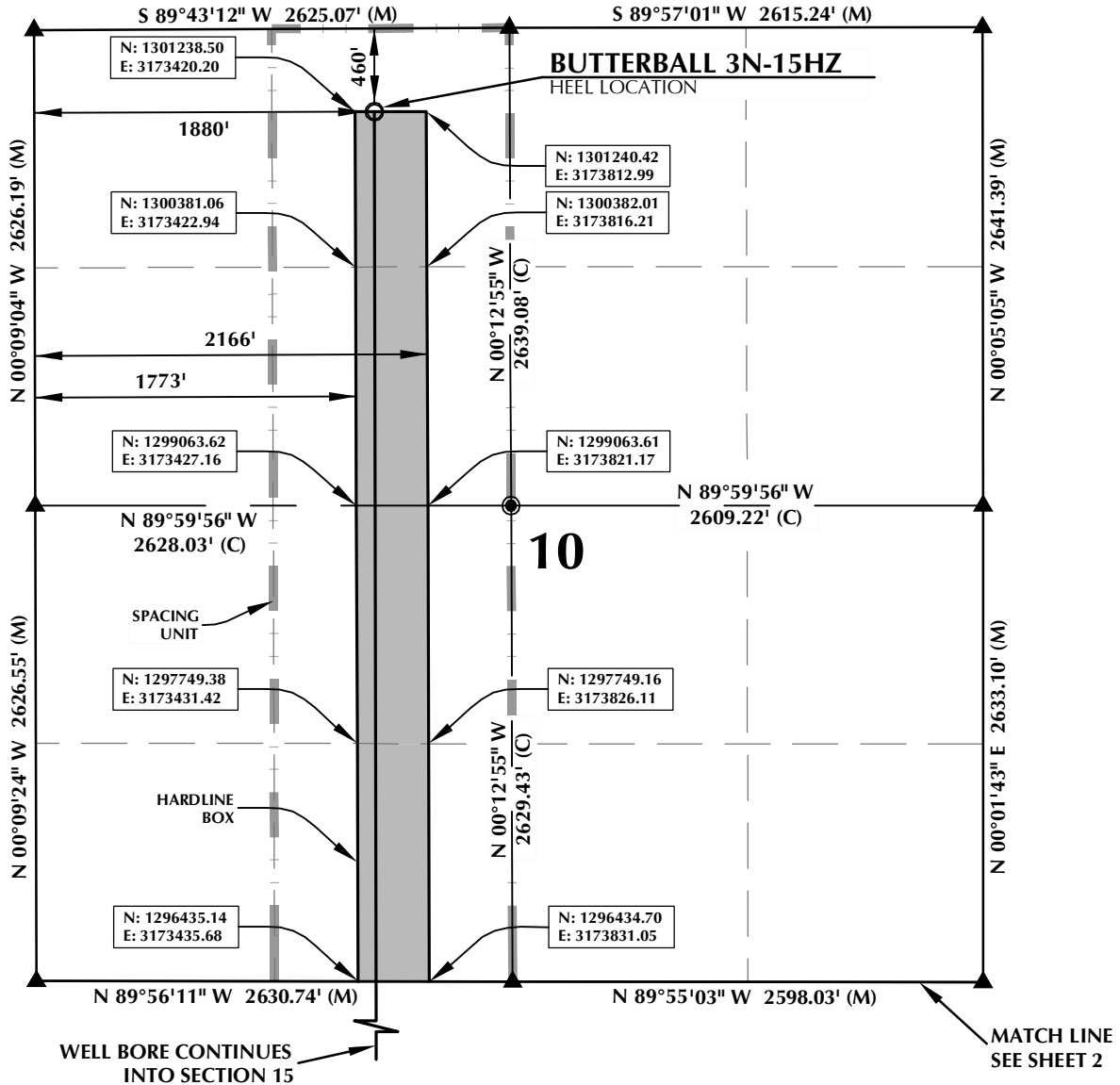
CONSULTING, LLC

SHERIDAN OFFICE
 2155 North Main Street
 Sheridan, Wyoming 82801
 Phone 307-674-0609

LOVELAND OFFICE
 1635 Foxtrail Drive, Suite 204
 Loveland, Colorado 80538
 Phone 970-776-4331

DRAFTED BY:	APF	CHECKED BY:	BJR	SHEET NO:
DATE DRAFTED:	5/29/13	DATE SURVEYED:	6/24/13	2
REVISED:	6/28/13	FILE NAME:	13-47	2 OF 2

SPACING UNIT: BUTTERBALL 3N-15HZ T2N, R67W



HEEL LOCATION
NAD 83
N: 1,301,239.02'
E: 3,173,527.41'

LATITUDE= 40.15862°
LONGITUDE= -104.879150°

LATITUDE= 40°09'31.062"
LONGITUDE= -104°52'44.939"

BOTTOM HOLE LOCATION
NAD 83
N: 1,291,622.39'
E: 3,173,540.81'

LATITUDE= 40.132230°
LONGITUDE= -104.879343°

LATITUDE= 40°07'56.027"
LONGITUDE= -104°52'45.634"



SCALE: 1" = 1000'

NOTES:

1. ▲ INDICATES FOUND SECTION CORNER
2. ● INDICATES CALCULATED CORNER
3. BASIS OF BEARING DERIVED FROM COLORADO COORDINATE SYSTEM 1983 NORTH ZONE UNLESS OTHERWISE NOTED.
4. DRAWING NORTHING / EASTING COORDINATES ARE BASED ON COLORADO COORDINATE SYSTEM 1983 NORTH ZONE UNLESS OTHERWISE NOTED.
5. COMBINED SCALE FACTOR: .99972297
6. THIS EXHIBIT DOES NOT REPRESENT A LAND SURVEY PLAT OR IMPROVEMENT SURVEY PLAT AS DEFINED BY C.R.S. 38-51-102 AND CANNOT BE RELIED UPON TO DETERMINE OWNERSHIP.

WELL PAD - BUTTERBALL 3N-15HZ

BUTTERBALL 3N-15HZ
SPACING UNIT EXHIBIT
460' FNL & 1880' FWL NENW (HEEL)
LOCATED IN SECTION 10
460' FSL & 1880' FWL SESW (BOTTOM)
LOCATED IN SECTION 15
T2N, R67W, 6TH P.M.
WELD COUNTY, COLORADO

**Kerr-McGee Oil &
Gas Onshore L.P.**
1099 18th Street
Denver, Colorado 80202



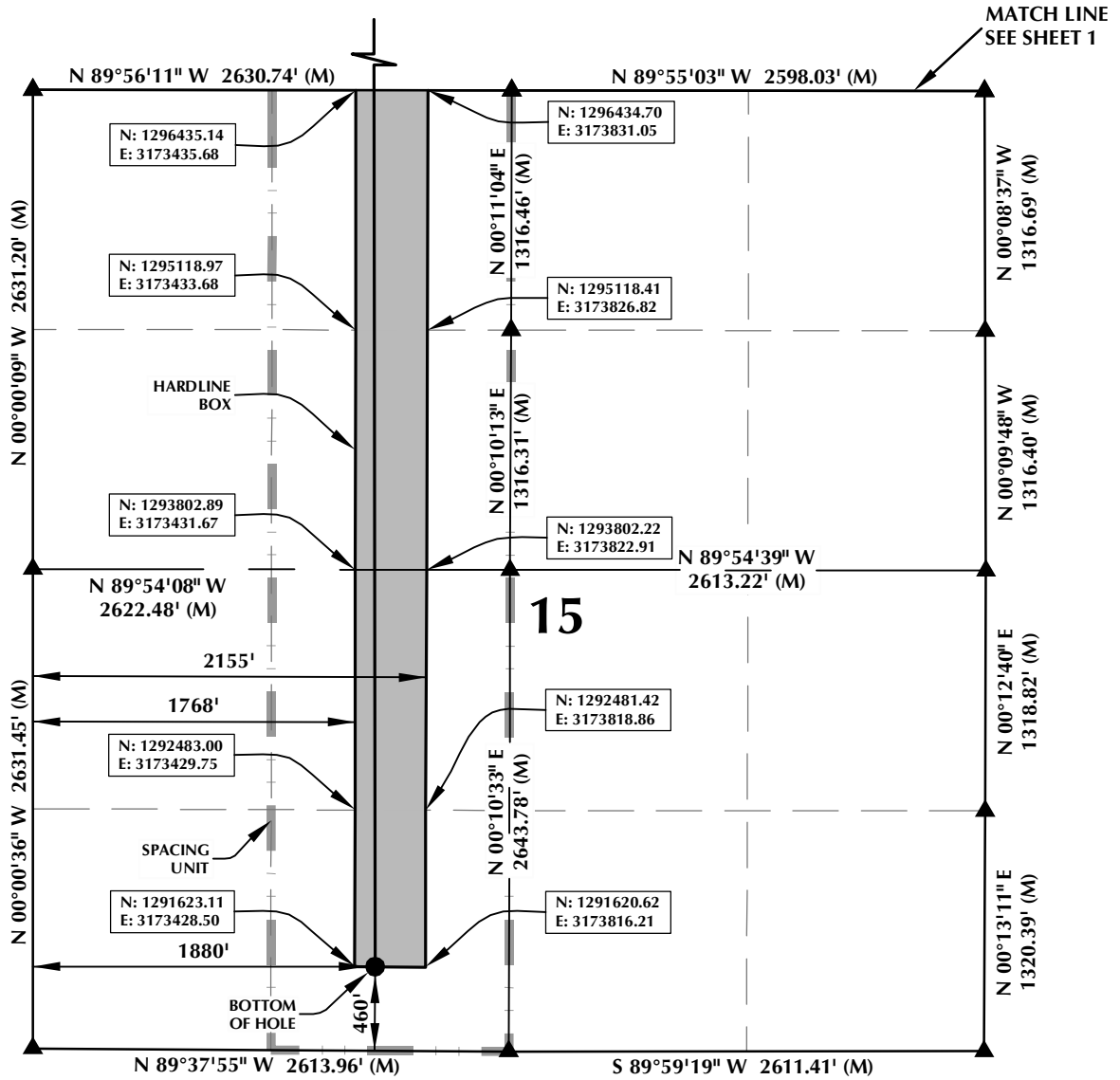
CONSULTING, LLC

SHERIDAN OFFICE
2155 North Main Street
Sheridan, Wyoming 82801
Phone 307-674-0609

LOVELAND OFFICE
1635 Foxtrail Drive, Suite 204
Loveland, Colorado 80538
Phone 970-776-4331

DRAFTED BY: APF	CHECKED BY: BJR	SHEET NO:
DATE DRAFTED: 5/29/13	DATE SURVEYED: 5/15/13	1
REVISED:	FILE NAME: 13-47	1 OF 2

SPACING UNIT: BUTTERBALL 3N-15HZ T2N, R67W



HEEL LOCATION
NAD 83
N: 1,301,239.02'
E: 3,173,527.41'

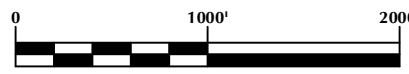
BOTTOM HOLE LOCATION
NAD 83
N: 1,291,622.39'
E: 3,173,540.81'

LATITUDE= 40.15862°
LONGITUDE= -104.879150°

LATITUDE= 40.132230°
LONGITUDE= -104.879343°

LATITUDE= 40°09'31.062"
LONGITUDE= -104°52'44.939"

LATITUDE= 40°07'56.027"
LONGITUDE= -104°52'45.634"



SCALE: 1" = 1000'

NOTES:

1. ▲ INDICATES FOUND SECTION CORNER
2. ● INDICATES CALCULATED CORNER
3. BASIS OF BEARING DERIVED FROM COLORADO COORDINATE SYSTEM 1983 NORTH ZONE UNLESS OTHERWISE NOTED.
4. DRAWING NORTHING / EASTING COORDINATES ARE BASED ON COLORADO COORDINATE SYSTEM 1983 NORTH ZONE UNLESS OTHERWISE NOTED.
5. COMBINED SCALE FACTOR: .99972297
6. THIS EXHIBIT DOES NOT REPRESENT A LAND SURVEY PLAT OR IMPROVEMENT SURVEY PLAT AS DEFINED BY C.R.S. 38-51-102 AND CANNOT BE RELIED UPON TO DETERMINE OWNERSHIP.

WELL PAD - BUTTERBALL 3N-15HZ

BUTTERBALL 3N-15HZ
SPACING UNIT EXHIBIT
460' FNL & 1880' FWL NENW (HEEL)
LOCATED IN SECTION 10
460' FSL & 1880' FWL SESW (BOTTOM)
LOCATED IN SECTION 15
T2N, R67W, 6TH P.M.
WELD COUNTY, COLORADO

**Kerr-McGee Oil &
Gas Onshore L.P.**
1099 18th Street
Denver, Colorado 80202



CONSULTING, LLC

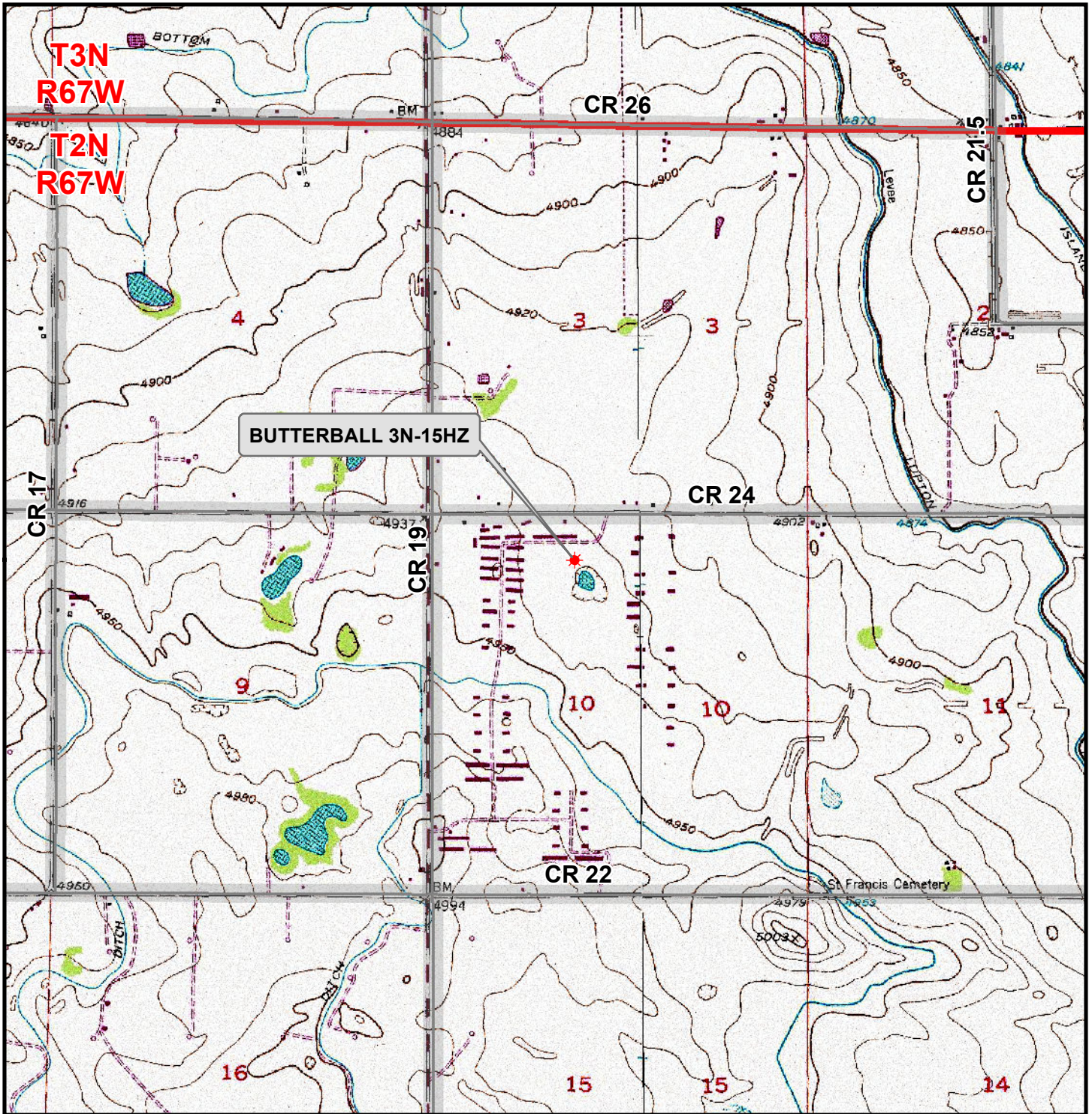
SHERIDAN OFFICE
2155 North Main Street
Sheridan, Wyoming 82801
Phone 307-674-0609

LOVELAND OFFICE
1635 Foxtrail Drive, Suite 204
Loveland, Colorado 80538
Phone 970-776-4331

DRAFTED BY: APF	CHECKED BY: BJR	SHEET NO:
DATE DRAFTED: 5/29/13	DATE SURVEYED: 5/15/13	2
REVISED:	FILE NAME: 13-47	2 OF 2

K:\AMDAR\2013\2013_47_WATTEBERG_T2_R67_SEC_10\PLATS\HARDLINES\BUTTERBALL_3N-15HZ\HARDLINE SHEET 2.dwg, 5/30/2013 9:46:53 AM, .dwg

K:\ANADARKO\2013\2013_47_WATTENBERG_T2_R67_SEC_10\GIS\Maps_ABC\Butterball 3N-15HZ\Butterball 3N-15HZ.mxd 6/25/2013 3:44:33 PM



Legend

- Well - Fee - Proposed
- Road - Primitive - Existing
- Road - County - Existing
- Road - Improved - Existing
- Road - Highway - Existing

WELL PAD - BUTTERBALL 3N-15HZ

**GENERAL LOCATION MAP
 BUTTERBALL 3N-15HZ
 LOCATED IN SECTION 10
 T2N, R67W, 6th P.M.
 WELD COUNTY, COLORADO**

**Kerr-McGee Oil &
 Gas Onshore L.P.**

1099 18th Street
 Denver, Colorado 80202



CONSULTING, LLC

SHERIDAN OFFICE **LOVELAND OFFICE**
 2155 North Main Street 1635 Foxtail Drive, Suite 204
 Sheridan, Wyoming 82801 Loveland, Colorado 80538
 Phone 307-674-0609 Phone 970-776-4331

SCALE: 1" = 2,000ft

NAD83 CO-Nft

DRAWN: JELO

DATE: 29 May 2013

REVISED: JELO

DATE: 28 June 2013

