

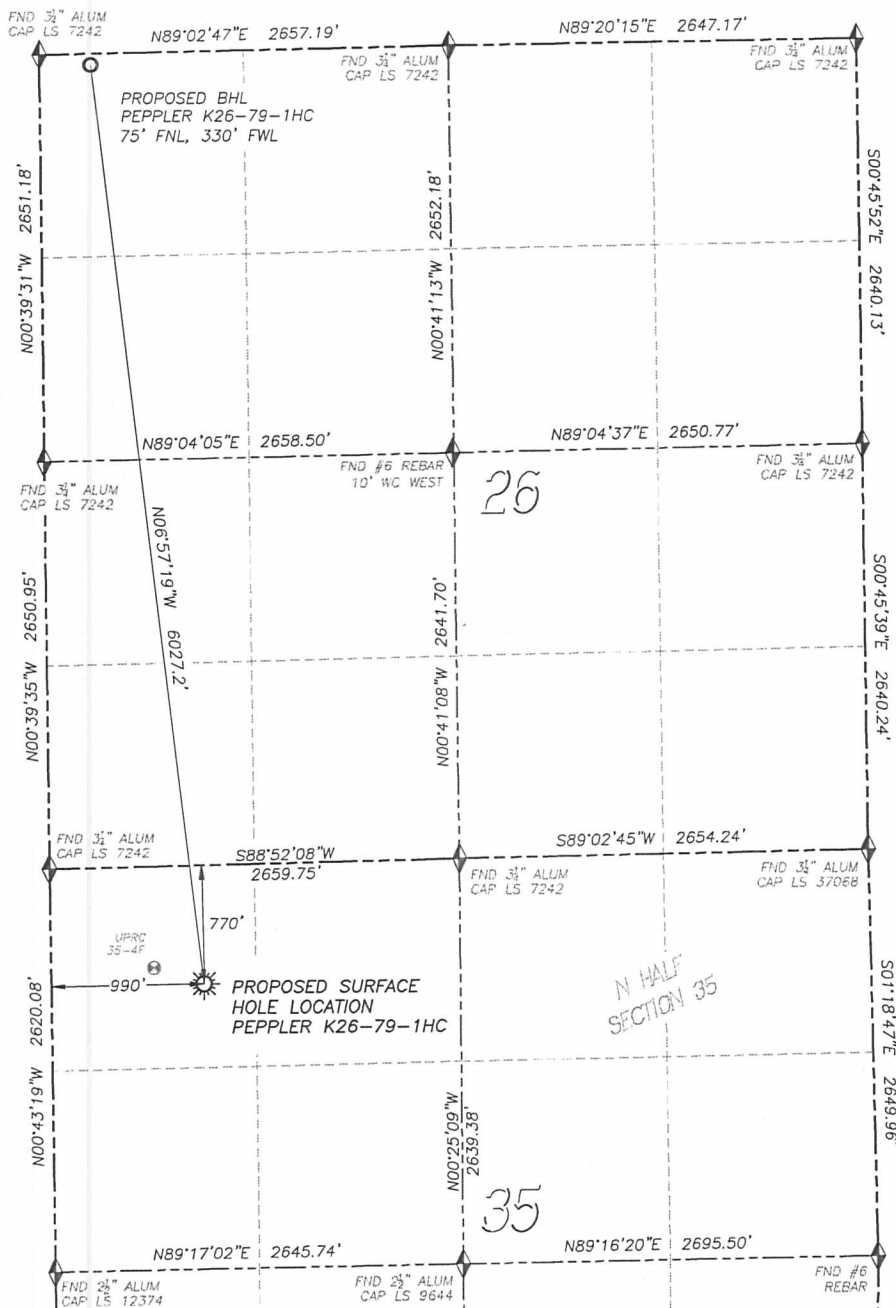
DALEY LAND SURVEYING, INC.

PARKER, CO. 80134

303 953 9841

# WELL LOCATION CERTIFICATE PEPPLER K26-79-1HC

SECTION 35, TOWNSHIP 4 NORTH, RANGE 66 WEST OF THE 6TH PRINCIPAL MERIDIAN

**NAD 83 LATITUDE AND LONGITUDE**

PEPPLER K26-79-1HC

SURFACE HOLE:

LATITUDE: N40.27347°

LONGITUDE: W104.75032°

ELEVATION: 4787'

FOOTAGE: 770' FNL, 990' FWL

PDOP: 1.5

QTR/QTR: NW4/NW4 SEC 35

PROP LINE: 338'± EAST

BOTTOM HOLE:

LATITUDE: N40.28991°

LONGITUDE: W104.75275°

FOOTAGE: 75' FNL, 330' FWL

OF SECTION 26

**NEAREST EXISTING WELL:**

UPRC 35-4F SURFACE HOLE

LATITUDE: N40.27377°

LONGITUDE: W104.75147°

ELEVATION: 4785'

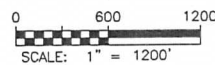
340' NORTHWEST

**NOTES:**

- 1) BEARINGS FOR THIS MAP ARE ASSUMED AND BASED UPON GPS OBSERVATIONS MADE BETWEEN MONUMENTS LOCATED AT THE NORTHWEST CORNER AND NORTH QUARTER CORNER CORNER OF SECTION 35, T.4N., R.66W.
- 2) HORIZONTAL DATUM IS NAD83.
- 3) VERTICAL DATUM IS NAVD88 AND ORIGINATES FROM THE LOCAL C.O.R.S. NETWORK, UTILIZING THE GEOID09 MODEL.
- 4) SEE LOCATION DRAWING FOR VISIBLE IMPROVEMENTS WITHIN 400' OF PROPOSED DISTURBED AREA.
- 5) SURFACE USE: PASTURE.

**LEGEND**

- ◆ FOUND MONUMENT AS DESCRIBED
- ☀ PROPOSED WELL
- ⊙ EXISTING WELL
- BOTTOM HOLE
- ⊗ ABANDONED WELL
- ◇ CALCULATED POSITION



IN ACCORDANCE WITH A REQUEST FROM BRIAN JAMES OF NOBLE ENERGY INC., DALEY LAND SURVEYING, INC. HAS DETERMINED THE SURFACE LOCATION OF THE PEPPLER K26-79-1HC WELL TO BE 770' FNL, 990' FWL, AS MEASURED AT NINETY (90) DEGREES FROM THE SECTION LINES OF SECTION 35, TOWNSHIP 4 NORTH, RANGE 66 WEST OF THE 6TH PRINCIPAL MERIDIAN, WELD COUNTY, COLORADO. THE BOTTOM HOLE LOCATION, PROVIDED BY THE CLIENT, IS TO BE 75' FNL, 330' FWL OF SECTION 26, T.4N., R.66W.

I HEREBY CERTIFY THAT THIS WELL LOCATION CERTIFICATE WAS PREPARED BY ME OR UNDER MY DIRECT SUPERVISION, THAT THE WORK WAS COMPLETED ON 2/4/2013 FOR AND ON BEHALF OF NOBLE ENERGY, INC., AND THAT THIS MAP DOES NOT REPRESENT A BOUNDARY SURVEY, IT IS NOT A LAND SURVEY PLAT OR AN IMPROVEMENT SURVEY PLAT AND IT IS NOT TO BE RELIED UPON FOR THE ESTABLISHMENT OF FENCE, BUILDING OR OTHER FUTURE IMPROVEMENT LINES.

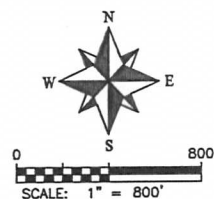
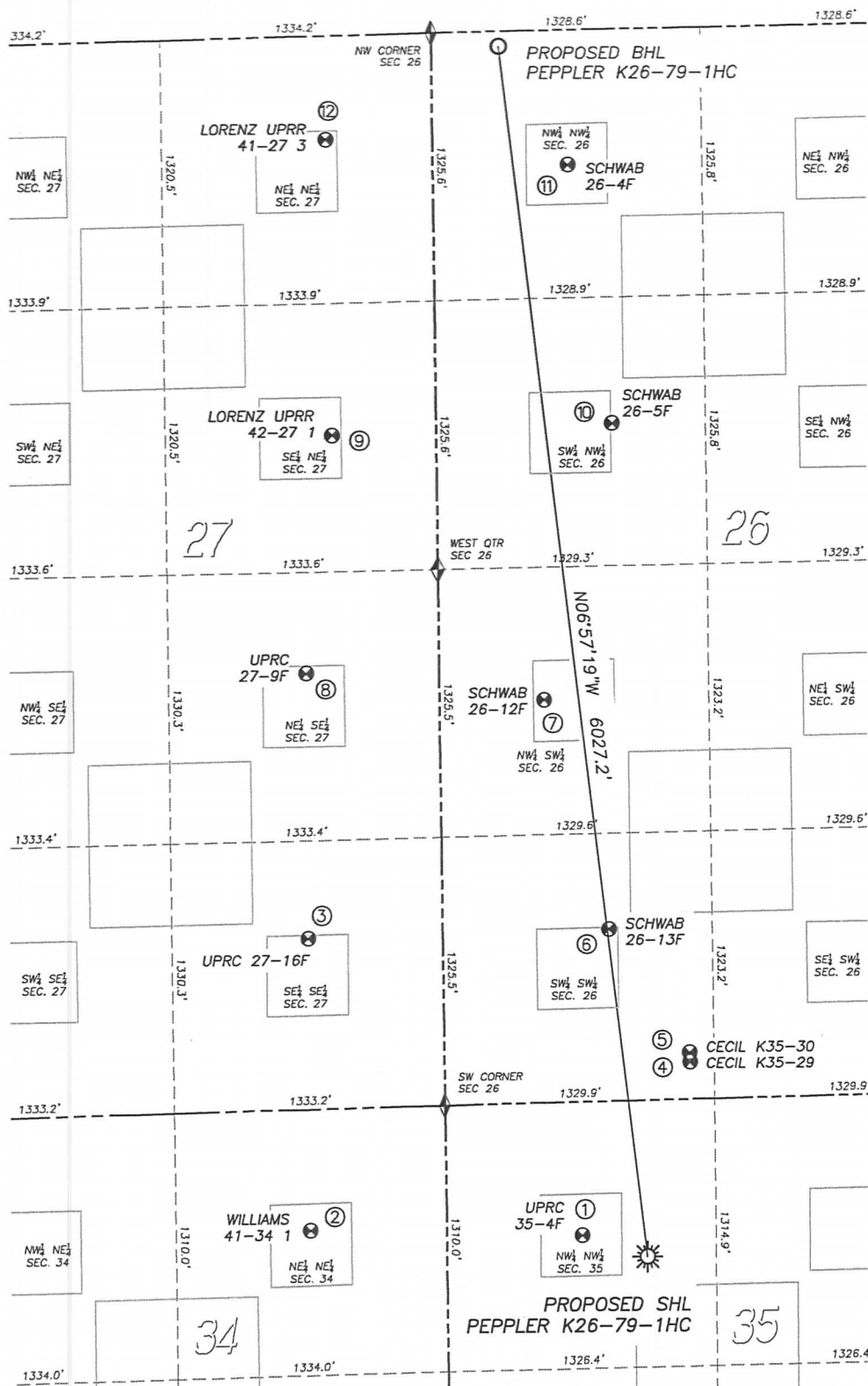


FOR AND ON BEHALF OF  
DALEY LAND SURVEYING, INC.,  
Robert Daley, PLS 35597







NOTICE: According to Colorado law you MUST commence any legal action based upon any defect in this W.L.C. within three years after you first discover such defect. In no event may any action based upon any such defect in this W.L.C. be commenced more than ten years from the date of the certification shown herein.

303 953 9841

## SECTION 35, TOWNSHIP 4 NORTH, RANGE 66 WEST OF THE 6TH PRINCIPAL MERIDIAN



LEGEND

- |   |                                |
|---|--------------------------------|
|  | FOUND MONUMENT<br>AS DESCRIBED |
|  | PROPOSED WELL                  |
|  | EXISTING WELL                  |
|  | BOTTOM HOLE                    |
|  | ABANDONED WELL                 |
|  | CALCULATED POSITION            |

NOTES:

- NOTES:
1. THIS DOES NOT REPRESENT A BOUNDARY SURVEY
  2. HORIZONTAL DATUM IS NAD83
  3. VERTICAL DATUM IS NAVD88 AND ORIGINATES FROM THE LOCAL C.O.R.S. NETWORK, UTILIZING THE GEOID09 MODEL

DALEY LAND SURVEYING, INC.

PARKER, CO. 80134

303 953 9841

**SITE SKETCH PEPPLER K26-79-1HC**  
**OFFSET WELL DATA**

SECTION 35, TOWNSHIP 4 NORTH, RANGE 66 WEST OF THE 6TH PRINCIPAL MERIDIAN

	Well Name	Qtr - Qtr	Footage		Latitude	Longitude	Elevation	PDOP
1	UPRC 35-4F	NW NW 35	660' FNL	668' FWL	40.27377	-104.75147	4785	1.2
2	WILLIAMS 41-34 1	NE NE 34	600' FNL	671' FWL	40.27388	-104.75627	4785	1.2
3	UPRC 27-16F	SE SE 27	846' FSL	664' FEL	40.27785	-104.75626	4765	1.5
4	CECIL K35-29	SW SW 26	182' FSL	1211' FWL	40.27609	-104.74954	4781	1.3
5	CECIL K35-30	SW SW 26	230' FSL	1210' FWL	40.27622	-104.74954	4780	1.3
6	SCHWAB 26-13F	SW SW 26	852' FSL	819' FWL	40.27792	-104.75095	4777	1.3
7	SCHWAB 26-12F	NW SW 26	1992' FSL	515' FWL	40.28104	-104.75205	4766	1.6
8	UPRC 27-9F	NE SE 27	2154' FSL	657' FEL	40.28144	-104.75625	4761	1.6
9	LORENZ UPRR 42-27 1	SE NE 27	1973' FNL	513' FEL	40.28467	-104.75575	4755	1.4
10	SCHWAB 26-5F	SW NW 26	1948' FNL	868' FWL	40.28478	-104.75080	4756	1.6
11	SCHWAB 26-4F	NW NW 26	667' FNL	665' FWL	40.28829	-104.75154	4741	1.3
12	LORENZ UPRR 41-27 3	NE NE 27	513' FNL	528' FEL	40.28868	-104.75582	4742	1.3