

WPX Energy Rocky Mountain, LLC

PLAT #2 LOCATION LAYOUT FOR MV 53-28 FRAC PAD
SECTION 28, T6S, R96W, 6th P.M.

SCALE: 1" = 60'

DATE: 02-11-12

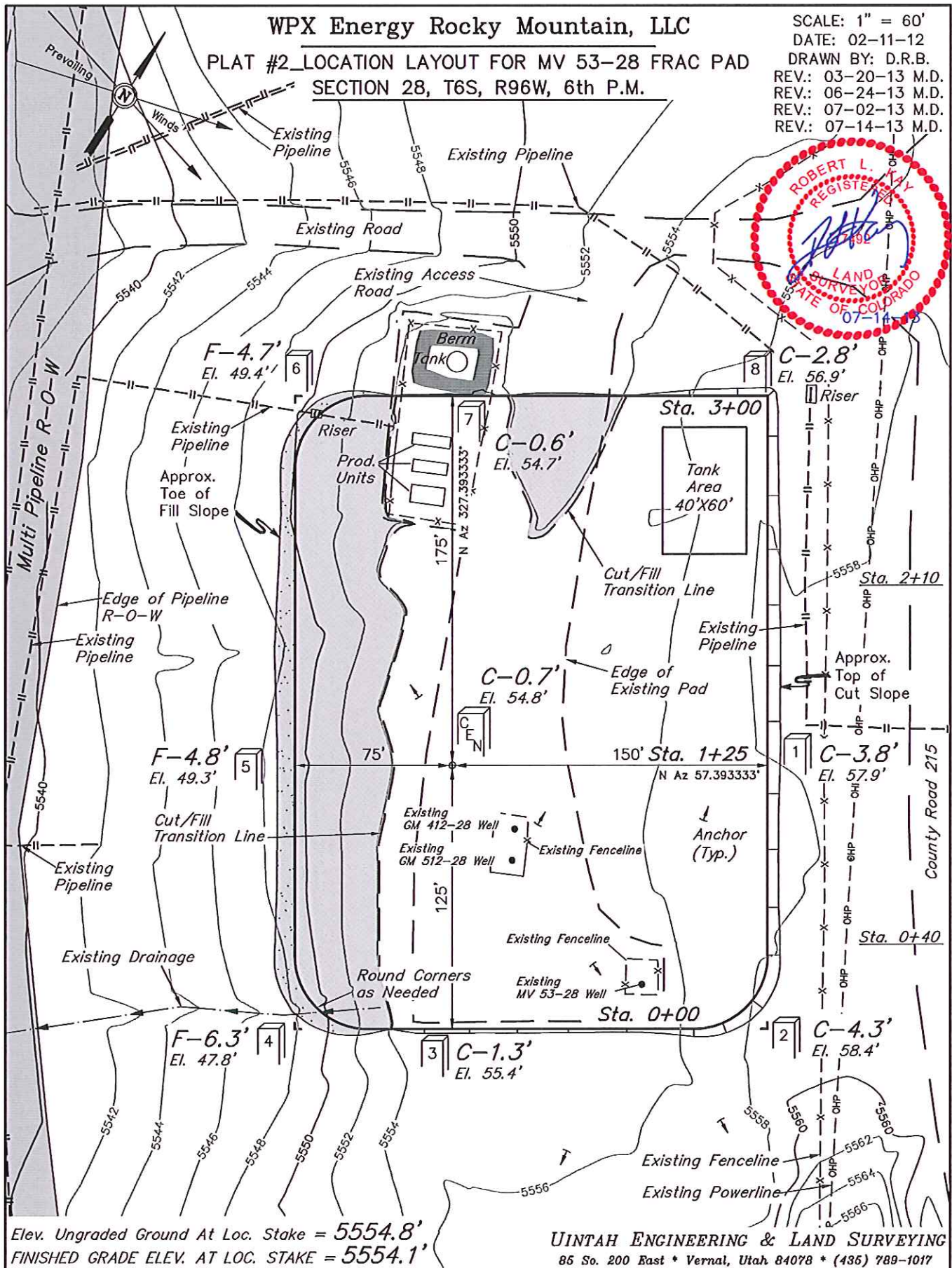
DRAWN BY: D.R.B.

REV.: 03-20-13 M.D.

REV.: 06-24-13 M.D.

REV.: 07-02-13 M.D.

REV.: 07-14-13 M.D.



Elev. Ungraded Ground At Loc. Stake = 5554.8'
FINISHED GRADE ELEV. AT LOC. STAKE = 5554.1'

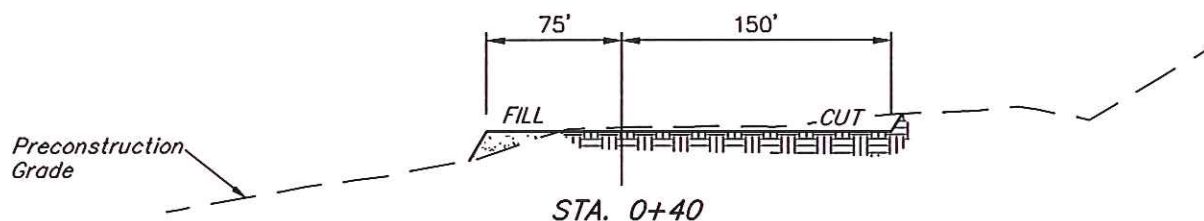
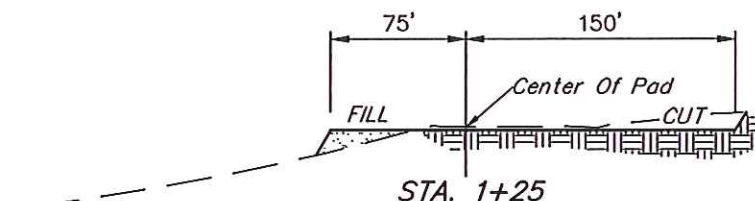
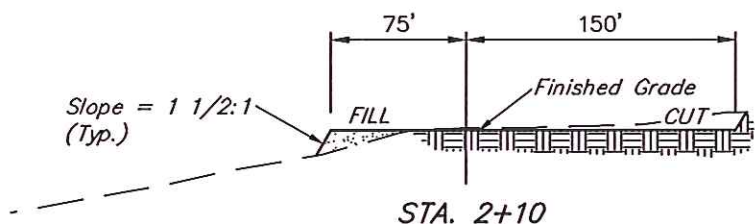
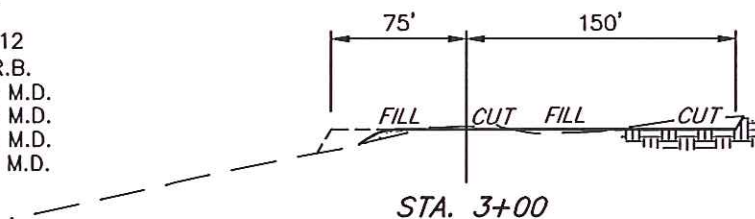
UINTAH ENGINEERING & LAND SURVEYING
85 So. 200 East * Vernal, Utah 84078 * (435) 789-1017

WPX Energy Rocky Mountain, LLC

PLAT #3_TYPICAL CROSS SECTION FOR MV 53-28 FRAC PAD
SECTION 28, T6S, R96W, 6th P.M.

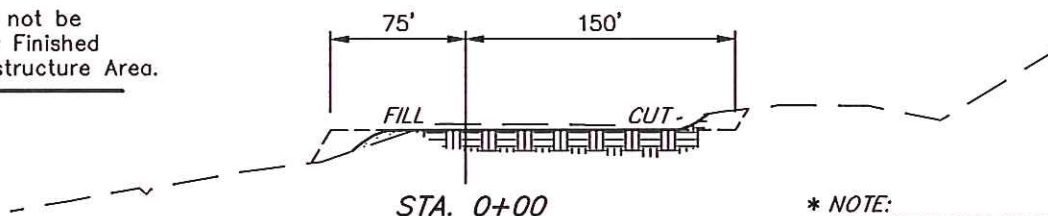
1" = 40'
X-Section
Scale
1" = 100'

DATE: 02-11-12
DRAWN BY: D.R.B.
REV.: 03-20-13 M.D.
REV.: 06-24-13 M.D.
REV.: 07-02-13 M.D.
REV.: 07-14-13 M.D.



NOTE:

Topsoil should not be Stripped Below Finished Grade on Substructure Area.



* NOTE:
FILL QUANTITY INCLUDES
5% FOR COMPACTION

APPROXIMATE ACREAGE

AREA OF MAX. DISTURBANCE = 2.433 ACRES
INTERIM RECLAIMED PAD = 0.920 ACRES

APPROXIMATE YARDAGES

(6") Topsoil Stripping = 1,330 Cu. Yds.
(New Construction Only)
Remaining Location = 1,830 Cu. Yds.
TOTAL CUT = 3,160 CU.YDS.
FILL = 1,830 CU.YDS.

EXCESS MATERIAL = 1,330 Cu. Yds.
Topsoil = 1,330 Cu. Yds.
EXCESS UNBALANCE = 0 Cu. Yds.
(After Interim Rehabilitation)

UINTAH ENGINEERING & LAND SURVEYING
85 So. 200 East * Vernal, Utah 84078 * (435) 789-1017