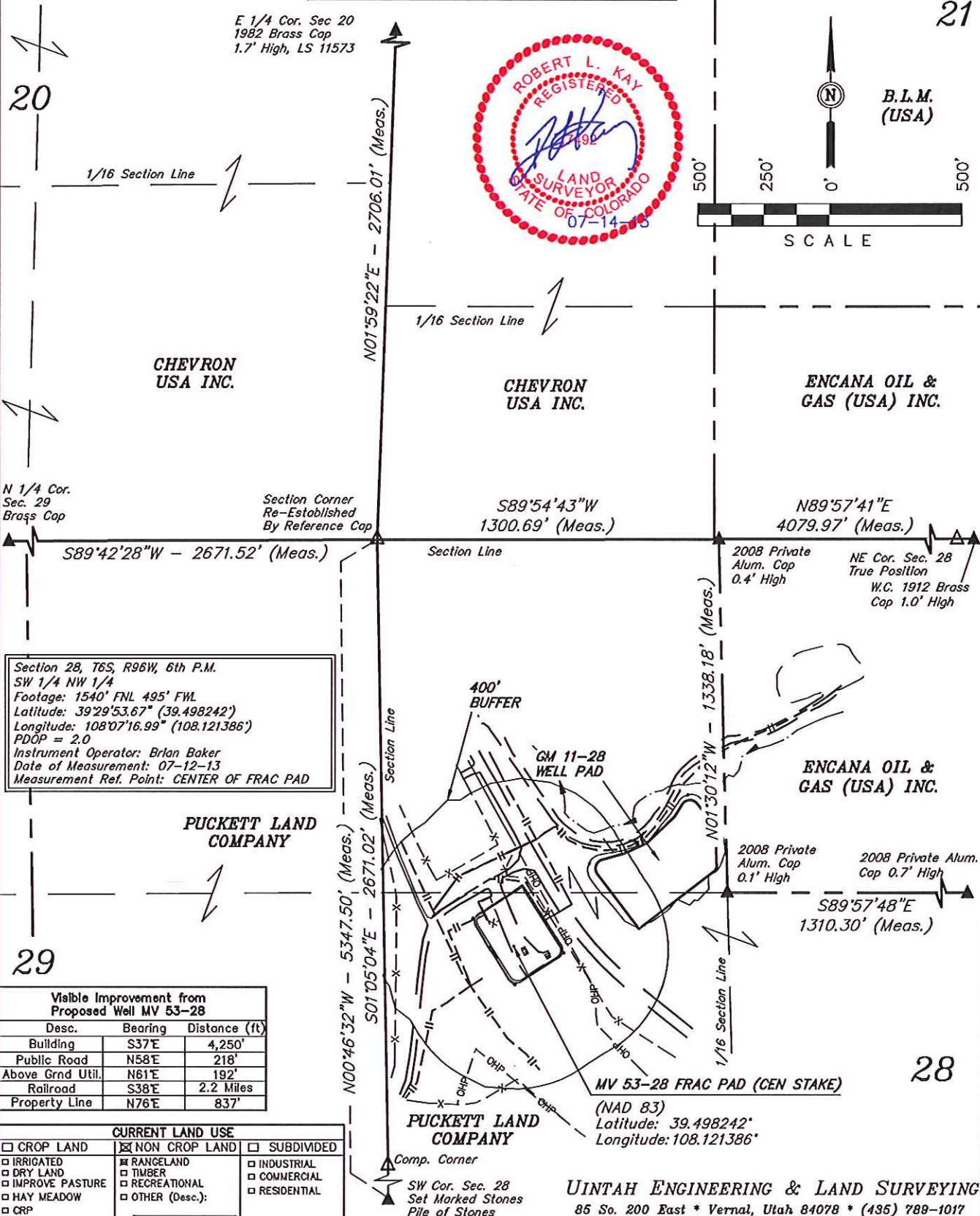


WPX Energy Rocky Mountain, LLC

PLAT #6_CURRENT FOOTAGE FOR MV 53-28 FRAC PAD -
SECTION 28, T6S, R96W, 6th P.M.

SCALE: 1" = 500'
DATE: 07-14-13
DRAWN BY: M.D.

21



UINTAH ENGINEERING & LAND SURVEYING
85 So. 200 East * Vernal, Utah 84078 * (435) 789-1017