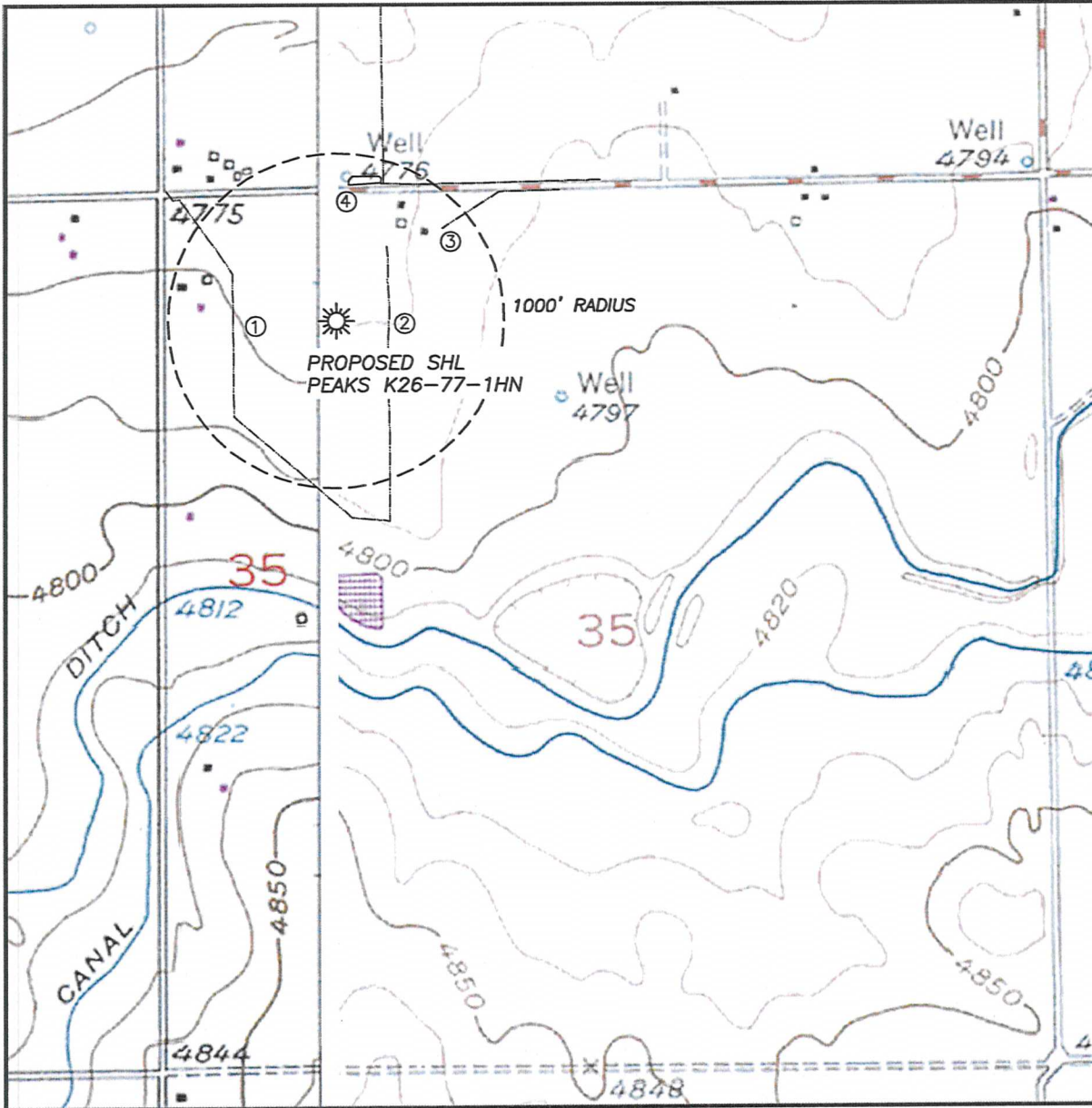


HYDROLOGY MAP PEAKS K26-77-1HN

SECTION 35, TOWNSHIP 4 NORTH, RANGE 66 WEST OF THE 6TH PRINCIPAL MERIDIAN



SURFACE WATER

- | | |
|----------------------|----------|
| 1. IRR. DITCH: | 613'± W |
| 2. IRR. DITCH: | 314'± E |
| 3. IRR. DITCH: | 838'± NE |
| 4. IRR POND & DITCH: | 810'± N |

