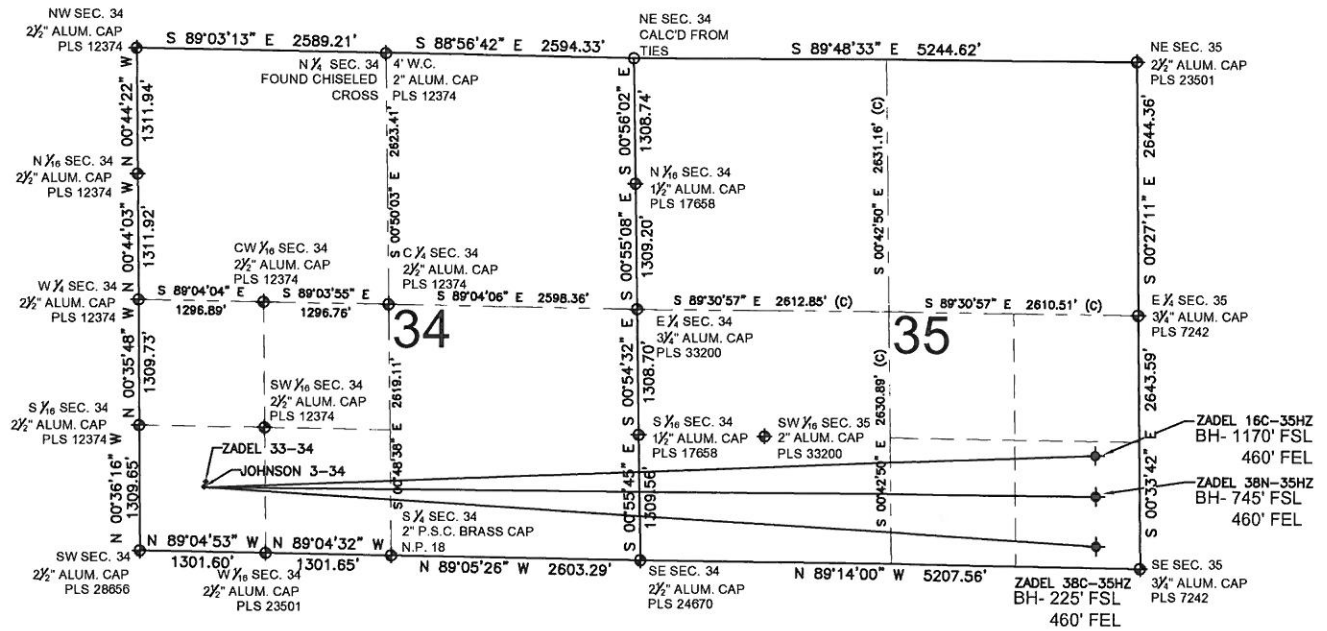


ZADEL 16C-35HZ MULTI-WELL PLAN

SECTION 34, TOWNSHIP 4 NORTH, RANGE 67 WEST, 6TH P.M.



NOTES:

ZADEL 16C-35HZ TO BE AT 672' FSL, 702' FWL.
BOTTOM HOLE AT 1170' FSL & 460' FEL.
ZADEL 38N-35HZ TO BE AT 670' FSL, 732' FWL.
BOTTOM HOLE AT 745' FSL & 460' FEL.
ZADEL 38C-35HZ TO BE AT 668' FSL, 762' FWL.
BOTTOM HOLE AT 225' FSL & 460' FEL.
JOHNSON 3-34 IS 675' FSL, 672' FWL.
ZADEL 33-34 IS 730' FSL, 689' FWL.

LEGEND

- ⊕ = EXISTING MONUMENT
- = PROPOSED WELL
- ◆ = BOTTOM HOLE
- BH= BOTTOM HOLE

PREPARED BY:

PFS llc

Petroleum Field Services, LLC
1801 W. 13th Ave.
Denver, CO 80204

KERR-MCGEE OIL & GAS ONSHORE LP

FIELD DATE:
01-10-13

DRAWING DATE:
06-17-13

SURFACE LOCATION:

SW 1/4 SW 1/4, SEC. 34, T4N, R67W, 6TH P.M.
WELD COUNTY, COLORADO

