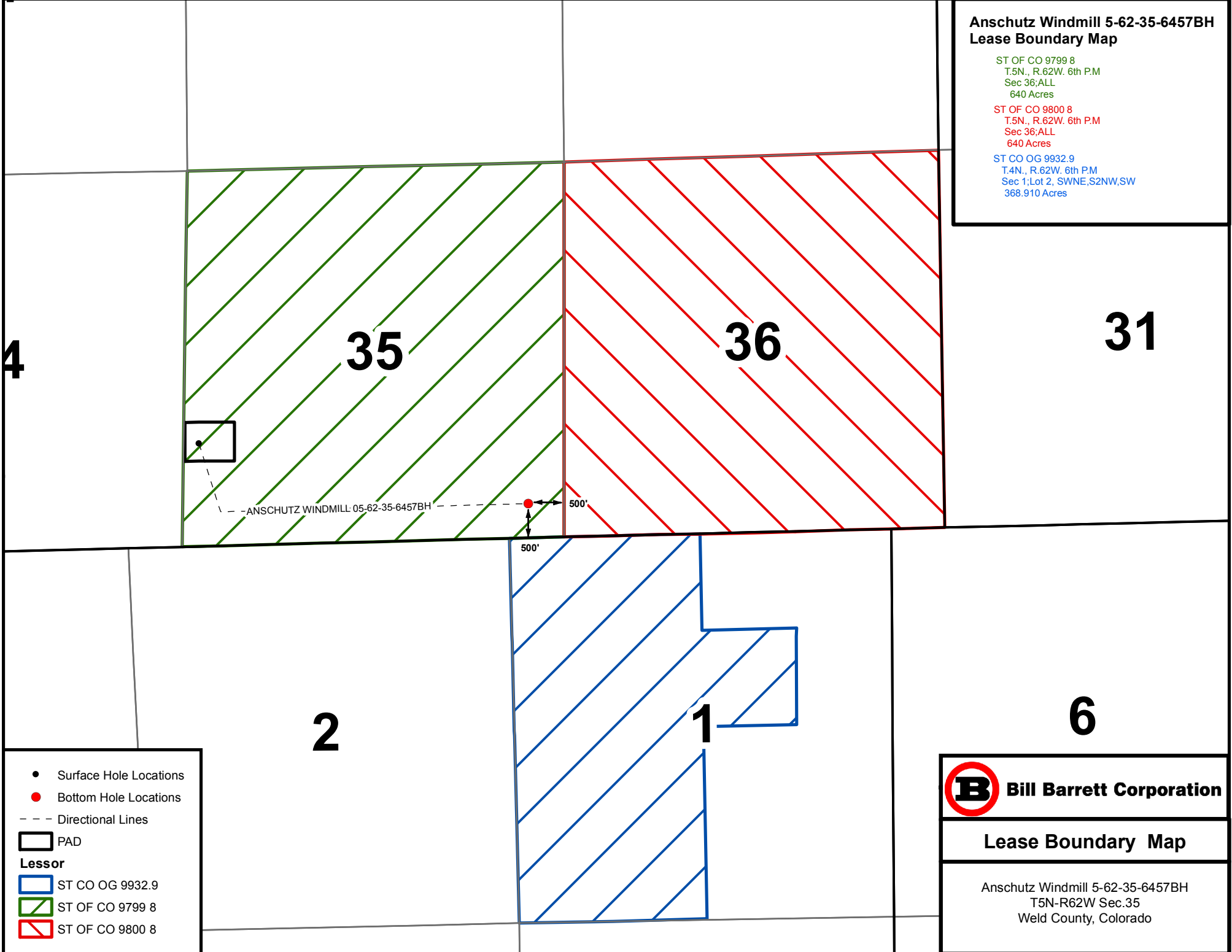


**Anschutz Windmill 5-62-35-6457BH
Lease Boundary Map**

ST OF CO 9799 8
T.5N., R.62W. 6th P.M
Sec 36;ALL
640 Acres

ST OF CO 9800 8
T.5N., R.62W. 6th P.M
Sec 36;ALL
640 Acres

ST CO OG 9932.9
T.4N., R.62W. 6th P.M
Sec 1;Lot 2, SWNE,S2NW,SW
368.910 Acres



4

35

36

31



--- ANSCHUTZ WINDMILL: 05-62-35-6457BH ---

500'

500'

2

1

6

- Surface Hole Locations
- Bottom Hole Locations
- - - Directional Lines
- ▭ PAD

- Lessor**
- ▭ ST CO OG 9932.9
 - ▨ ST OF CO 9799 8
 - ▨ ST OF CO 9800 8



Lease Boundary Map

Anschutz Windmill 5-62-35-6457BH
T5N-R62W Sec.35
Weld County, Colorado