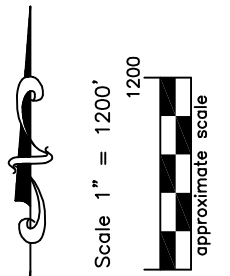
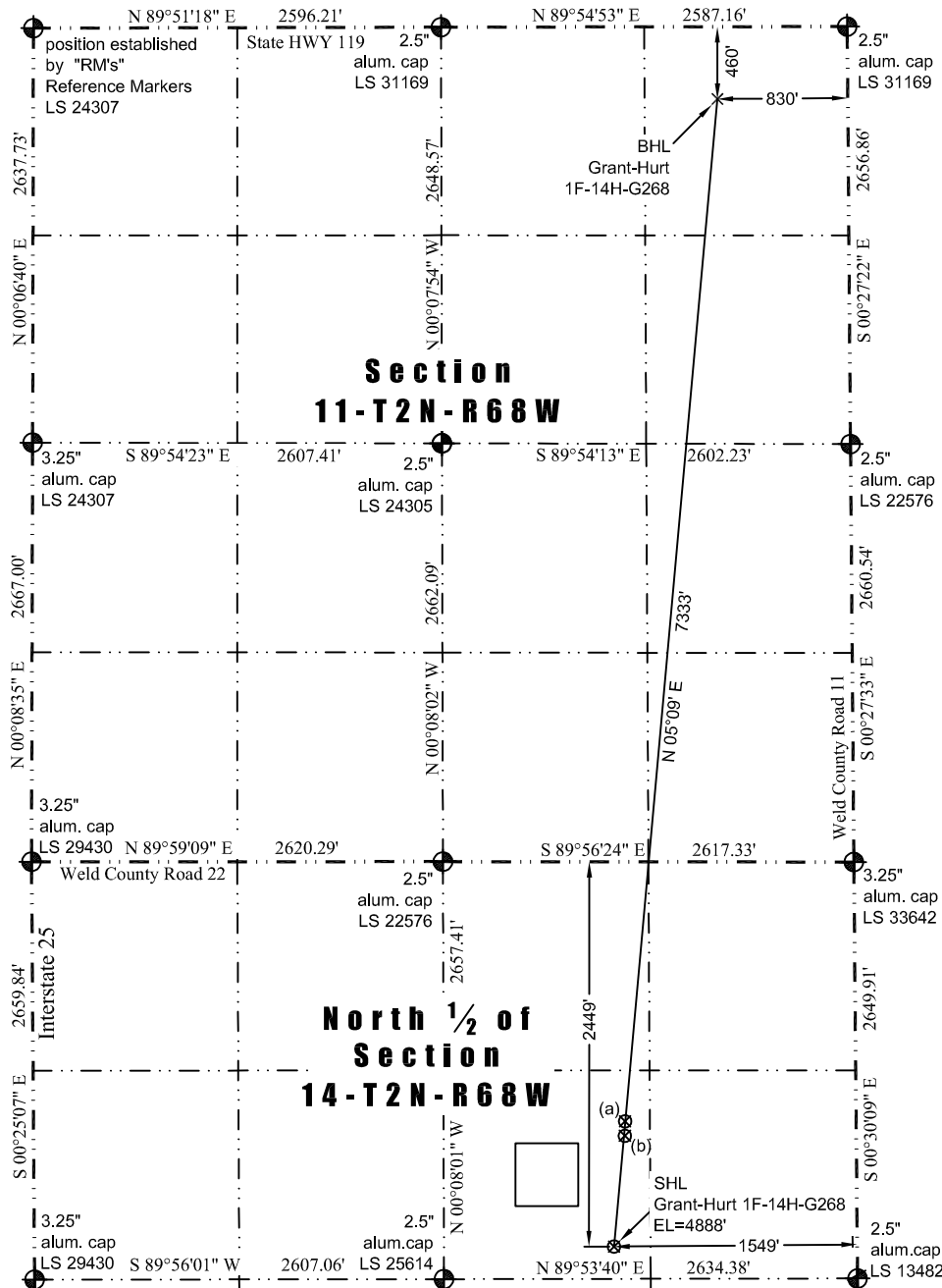


JR Land Surveying, LLC
 8114 Northstar Drive
 Windsor, Colorado 80528
 P. 970-576-4641

WELL LOCATION CERTIFICATE

THIS MAP DOES NOT REPRESENT A BOUNDARY SURVEY



LEGEND
 — found survey monument
 - - - calculated dimension

(a) Existing Well Data:
 Stanley Olsen #1
 Latitude: N 40.14147°
 Longitude: W 104.96629°
 FNL: 1651'
 FEL: 1471'
 ELEV: 4884'
 PDOP: 1.7

(b) Existing Well Data:
 Stanley Olsen #2
 Latitude: N 40.14122°
 Longitude: W 104.96629°
 FNL: 1744'
 FEL: 1474'
 ELEV: 4883'
 PDOP: 1.7

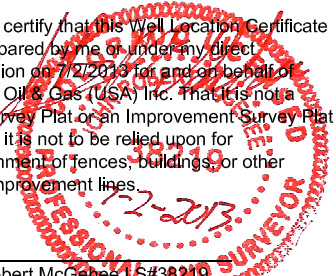
Nearest:
 Building: 1,324' east
 Above Ground Utility: 1,506' southeast
 Public Road: 1,533' east
 Railroad: 19,370' northwest
 Property Line: 205' south
 Well Window: SHL is 344' outside
 Existing Well: Stanley Olsen #2,
 709' northeast

In accordance with a request from Jay Knutson of EnCana Oil & Gas (USA) Inc., JR Land Surveying, LLC has determined the location of the **Grant-Hurt 1F-14H-G268** well site to be SHL: 2449' FNL and 1549' FEL, (BHL: 460' FNL and 830' FEL), as measured at ninety (90) degrees from the section lines of Sections 11 and 14, Township 2 North, Range 68 West of the 6th Principal Meridian, Weld County Colorado.

Proposed Surface Hole Data:
 Latitude: N 40.13928° (BHL: 40.15932°)
 Longitude: W 104.96656° (BHL: 104.96404°)
 PDOP: 1.3

- Notes:**
- 1) Bearings and distances based on NAD 83 Colorado North State Plane Coordinate, using RTK GPS observations taken 7/1/13 by operator John Rice.
 - 2) Conversion factor to ground (1.000285153).
 - 3) Elevations based on NAVD 88 GPS heights and Geoid 2003 corrections.
 - 4) See Location Drawing for visible improvements within 500 feet of Pad Site.
 - 5) The surface use is a cultivated field.

I hereby certify that this Well Location Certificate was prepared by me or under my direct supervision on 7/2/2013 for and on behalf of EnCana Oil & Gas (USA) Inc. That it is not a Land Survey Plat or an Improvement Survey Plat and that it is not to be relied upon for establishment of fences, buildings, or other future improvement lines.



John Robert McGehee LS#38210
 Well: Grant-Hurt 1F-14H-G268 WLC

NOTICE: According to Colorado law you must commence any legal action based upon any defect in this W.L.C. within three years after you first discover such defect. In no event may any action based upon any defect in this W.L.C. be commenced more than ten years from this said date of the certification shown hereon.